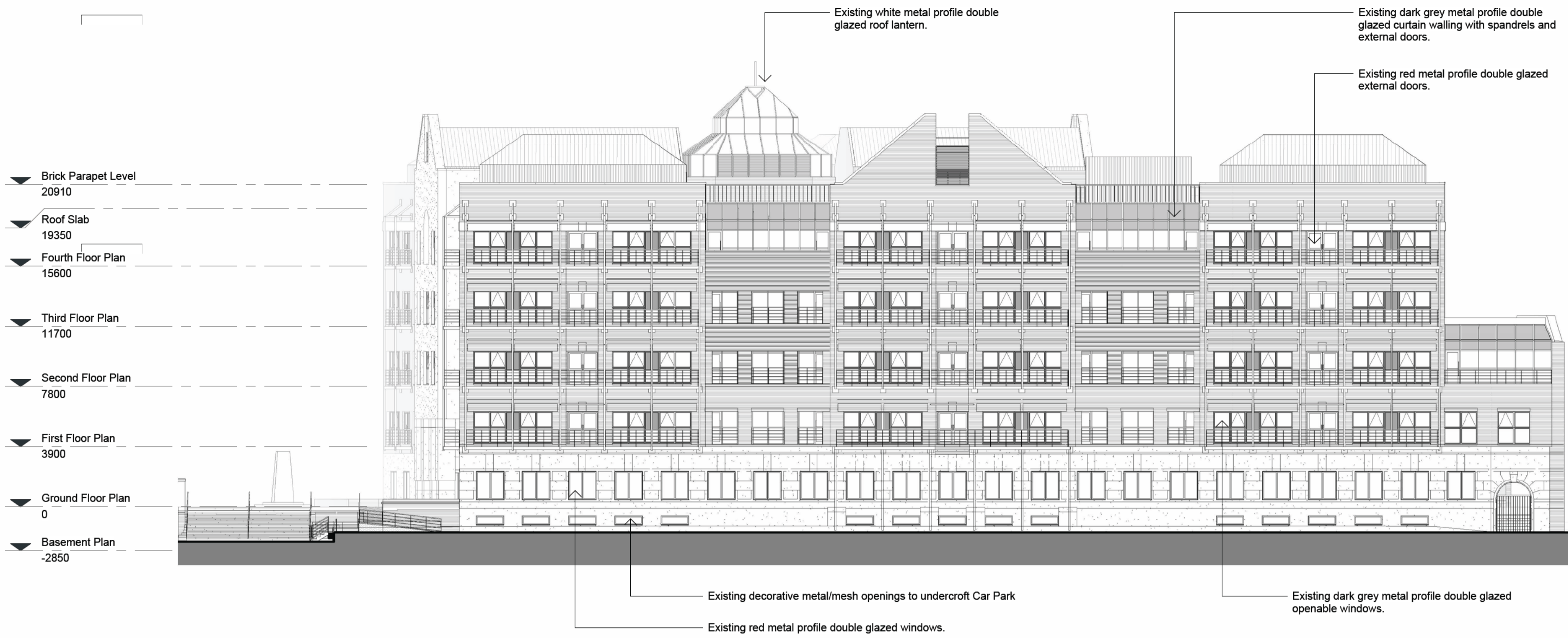
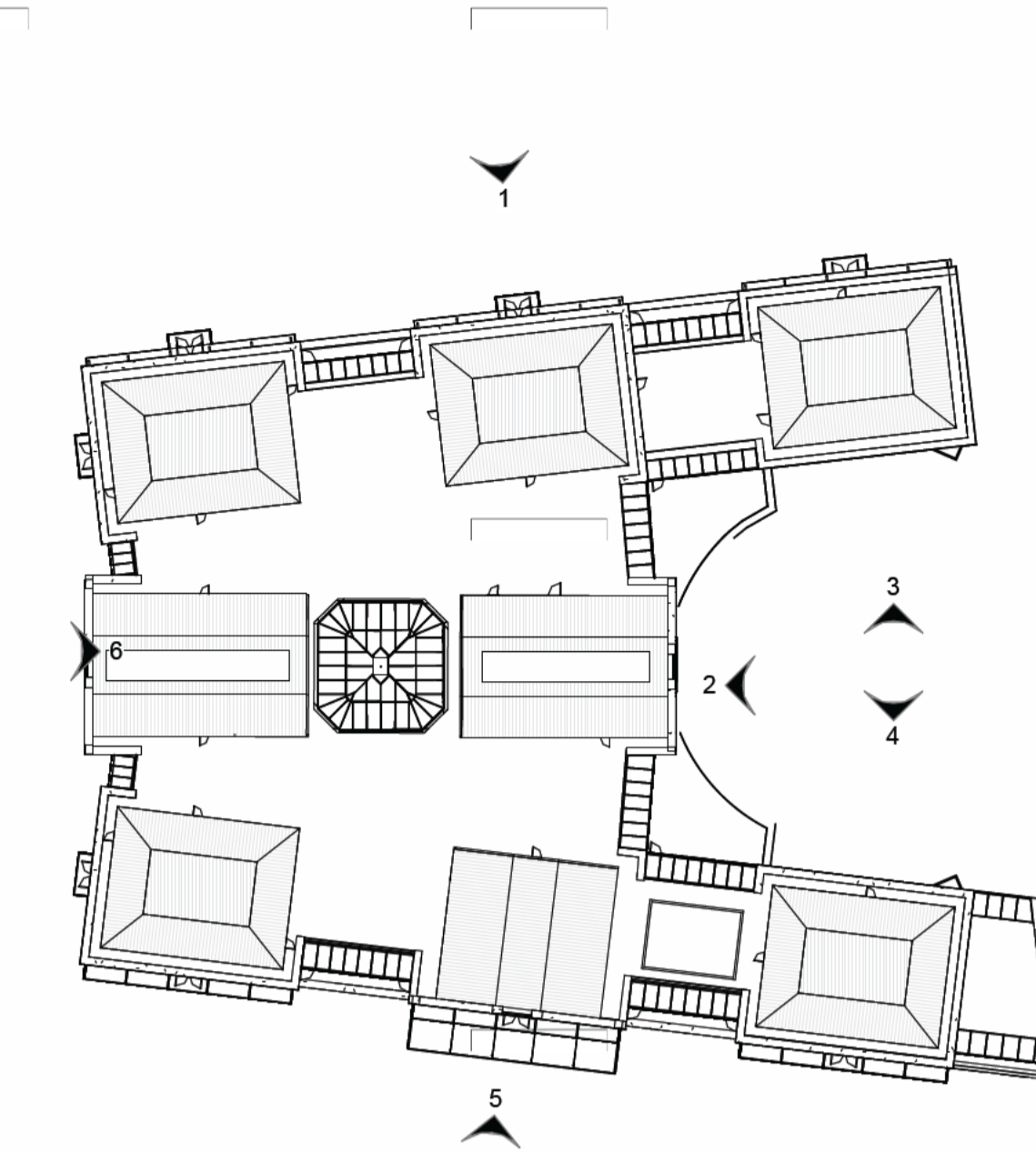


Notes
 Responsibility is not accepted for errors made by others in scaling from this drawing. Refer to figured dimensions only. All dimensions to be verified on site prior to construction. Report all discrepancies or ambiguities to the Document Originator immediately. This document is to be read in conjunction with relevant documents, drawings and standards.

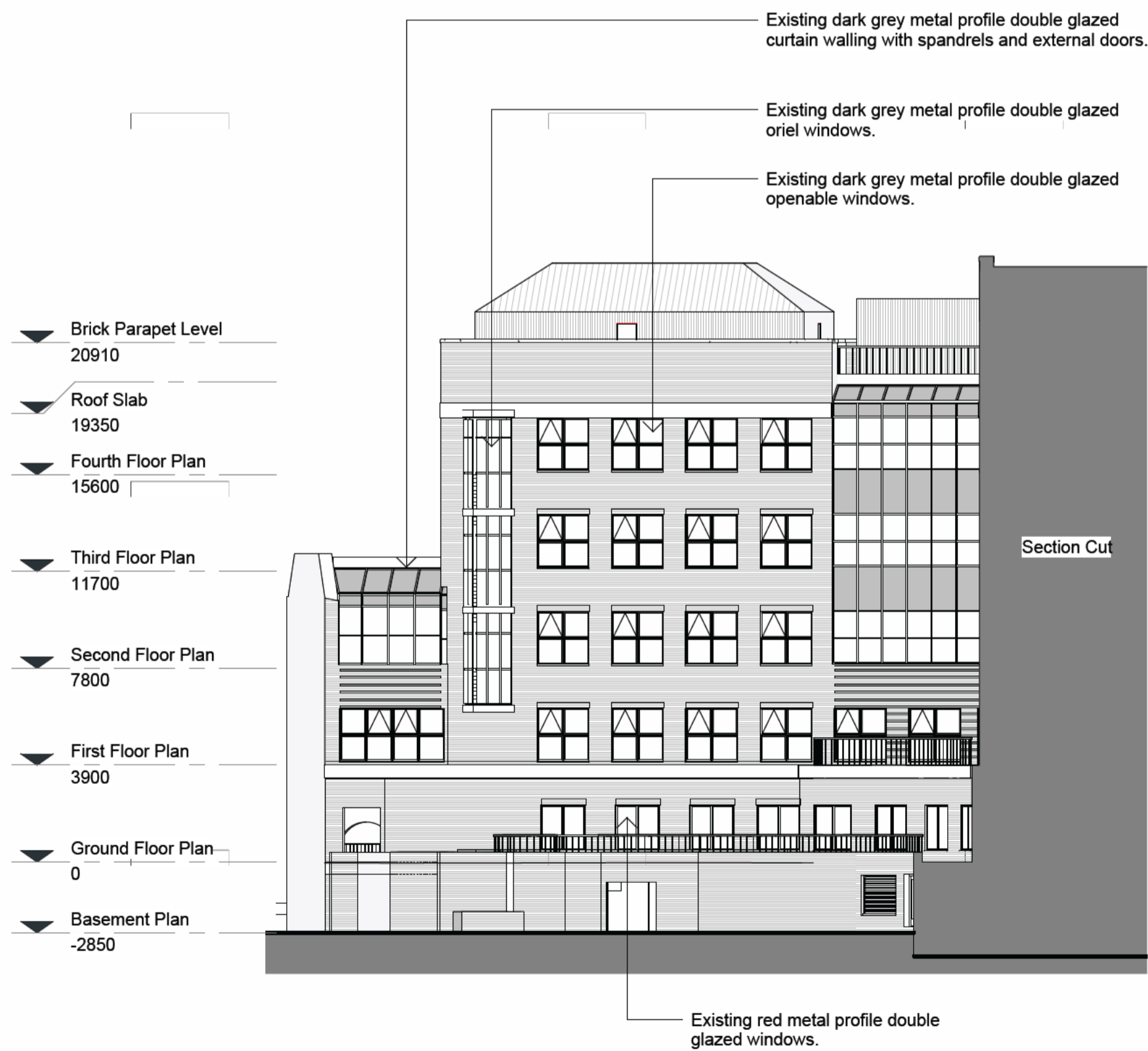


- ▼ Brick Parapet Level
20910
- ▼ Roof Slab
19350
- ▼ Fourth Floor Plan
15600
- ▼ Third Floor Plan
11700
- ▼ Second Floor Plan
7800
- ▼ First Floor Plan
3900
- ▼ Ground Floor Plan
0
- ▼ Basement Plan
-2850



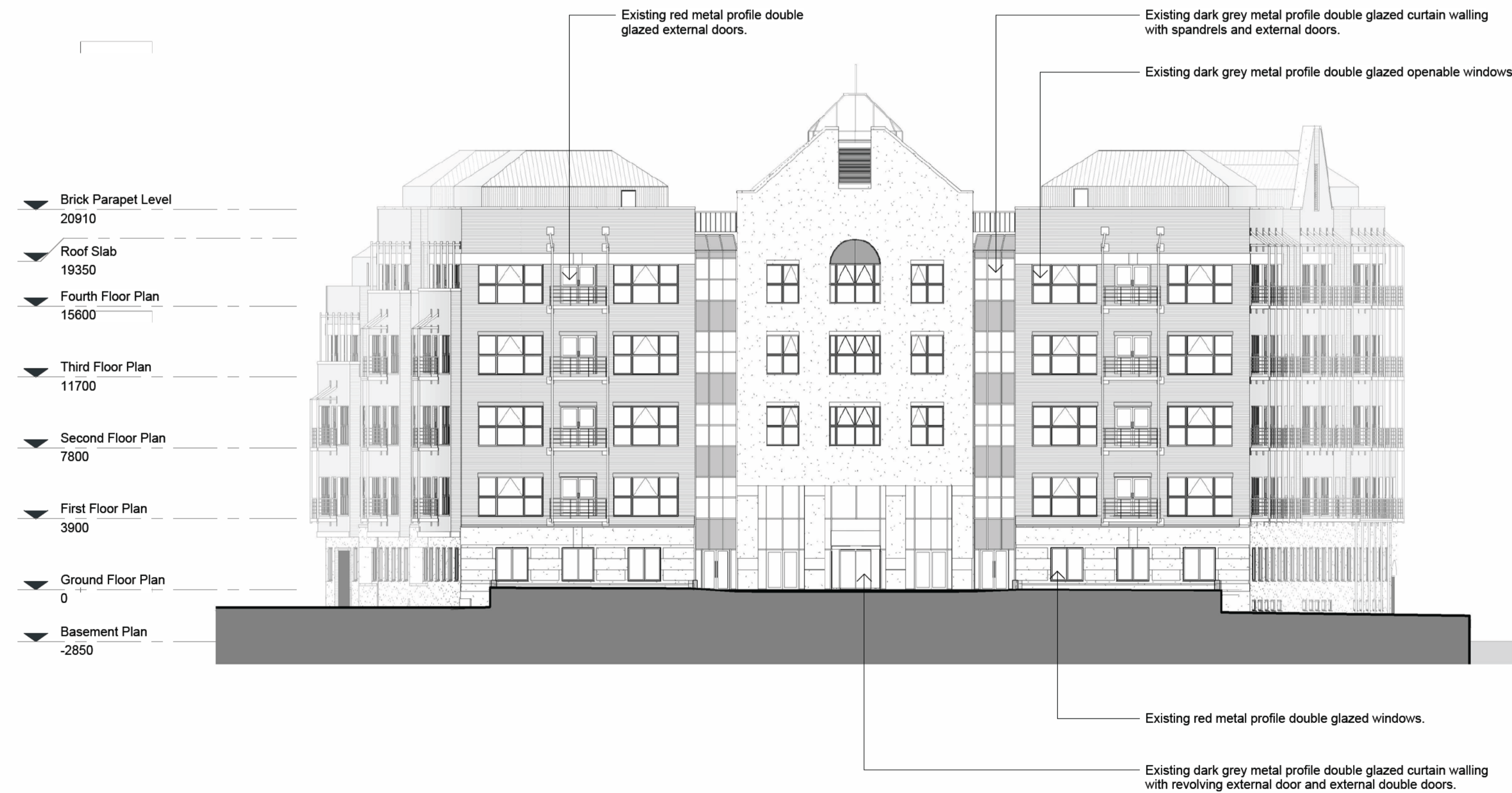
Key Plan - Existing Elevations 4-6 - Planning
 1 : 500

5 Existing Building - Elevation 5 - Planning
 1 : 200



- ▼ Brick Parapet Level
20910
- ▼ Roof Slab
19350
- ▼ Fourth Floor Plan
15600
- ▼ Third Floor Plan
11700
- ▼ Second Floor Plan
7800
- ▼ First Floor Plan
3900
- ▼ Ground Floor Plan
0
- ▼ Basement Plan
-2850

4 Existing Building - Elevation 4 - Planning
 1 : 200

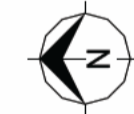


- ▼ Brick Parapet Level
20910
- ▼ Roof Slab
19350
- ▼ Fourth Floor Plan
15600
- ▼ Third Floor Plan
11700
- ▼ Second Floor Plan
7800
- ▼ First Floor Plan
3900
- ▼ Ground Floor Plan
0
- ▼ Basement Plan
-2850

6 Existing Building - Elevation 6 - Planning
 1 : 200

P02	16.09.24	Issued for Planning	BW	DT
P01	30.08.24	Draft Planning drawings for comment	BW	DT

Rev	Date	Notes	Dm	Chkd



Document Originator

AWW

London 106 Weston Street, SE1 3QB 020 7160 6000
 Plymouth East Quay House, PL4 0HX 01752 261 262
 Bristol priv + mark, 48-52 Baldwin Street, BS1 1QB 0117 923 2535

RIBA Chartered Practice

Client
 Skelton Group

AWW Project Number
 4817

Project Stage
 Planning

Project Title
 Redcliff Quay
 Bristol

Title
 Planning Issue - Existing Building - Elevation 4, 5 & 6

Scale @ A1 Document Status

As indicated S4 - Suitable for Stage Approval

Project	Origin	Volume	Level	Type	Role	Number	Rev
4817	AWW	XX	ZZ	DR	A	01109	P02