

MINISTRY OF TRANSPORT.

SESSION 1936—37.

FOWEY HARBOUR

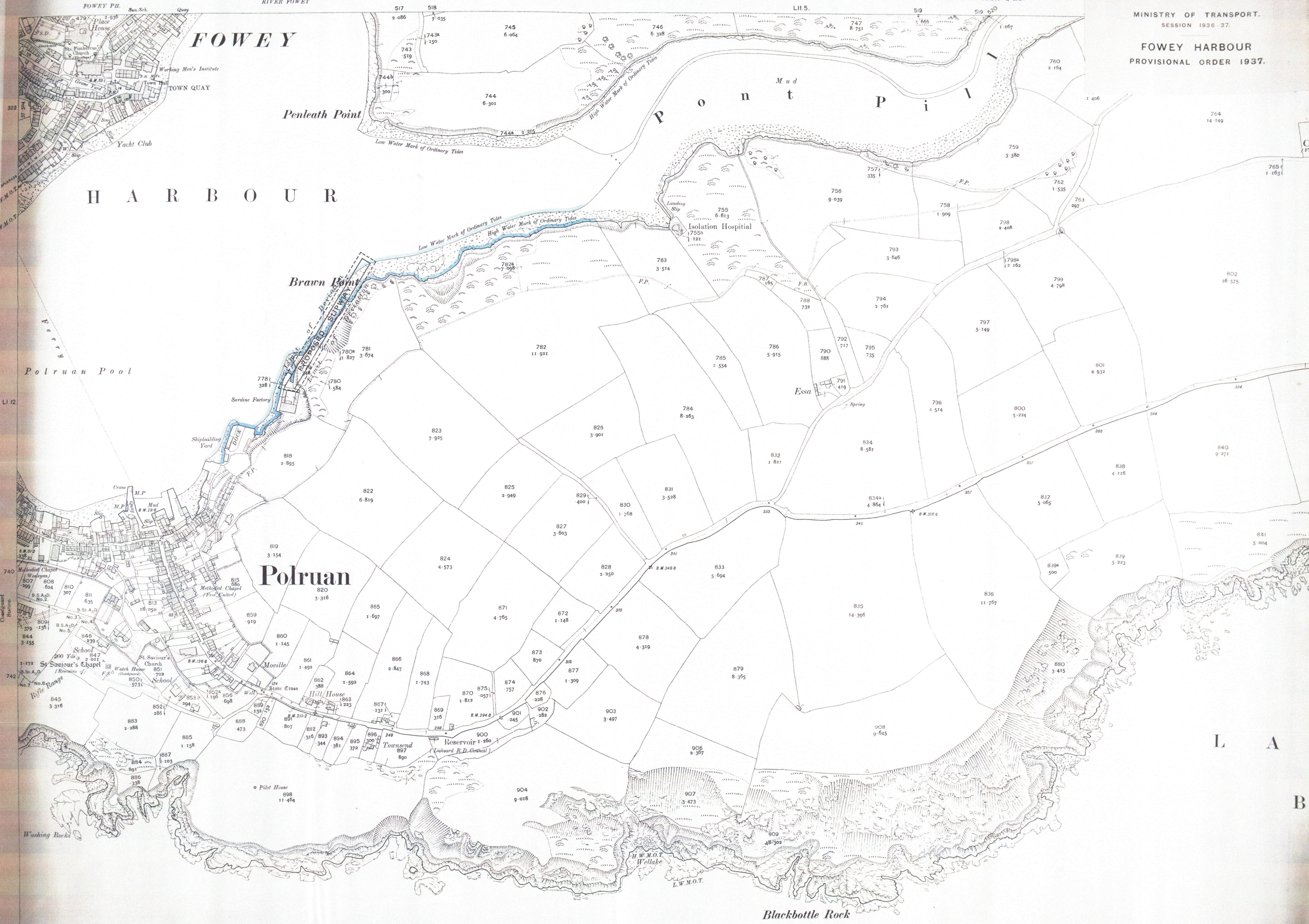
PROVISIONAL ORDER 1937.

GRAHAM, COUCH & CO.,
ST. AUSTELL.
Solicitors.

HANCOCK & WILLIS,
1, VERULAM BUILDINGS,
GRAY'S INN, W.C.1.
Parliamentary Agents.

C. W. PARKES LEES,
FOWEY.
Architect and Surveyor.

MINISTRY OF TRANSPORT.
SESSION 1936-37.
FOWEY HARBOUR
PROVISIONAL ORDER 1937.



FOWEY

H A R B O U R

Polruan

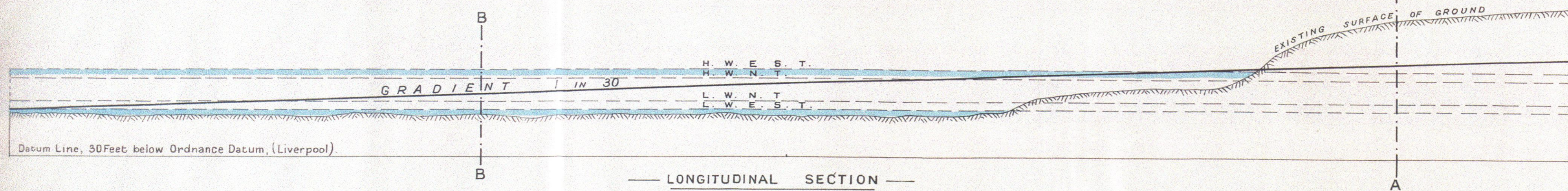
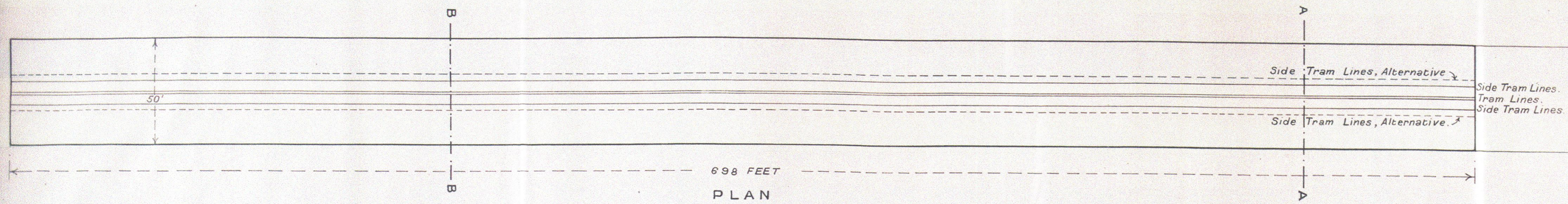
Blackbottle Rock

L A

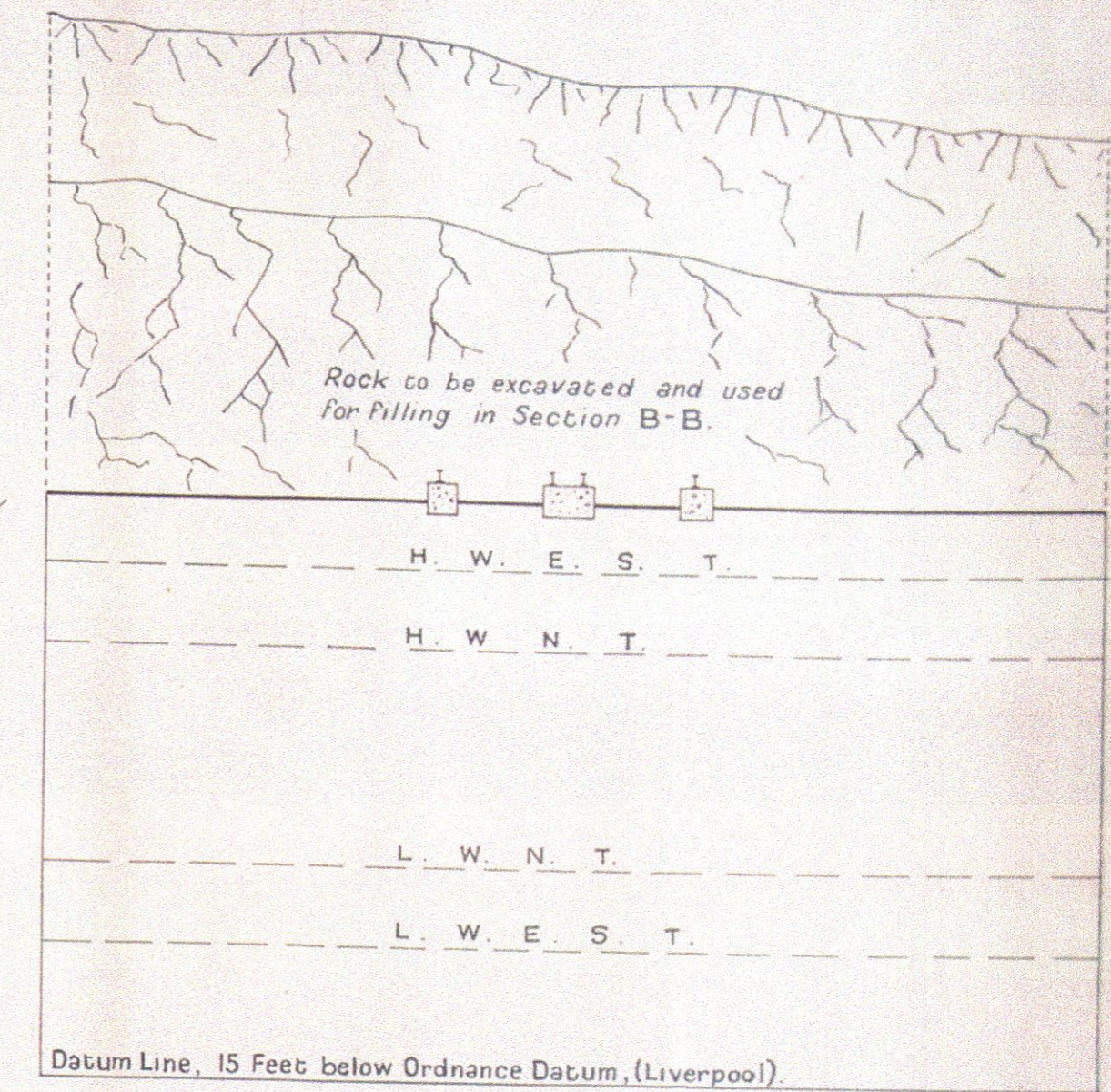
B

C O U N T Y O F C O R N W A L L
 R U R A L D I S T R I C T O F L I S K E A R D
 P A R I S H O F L A N T E G L O S

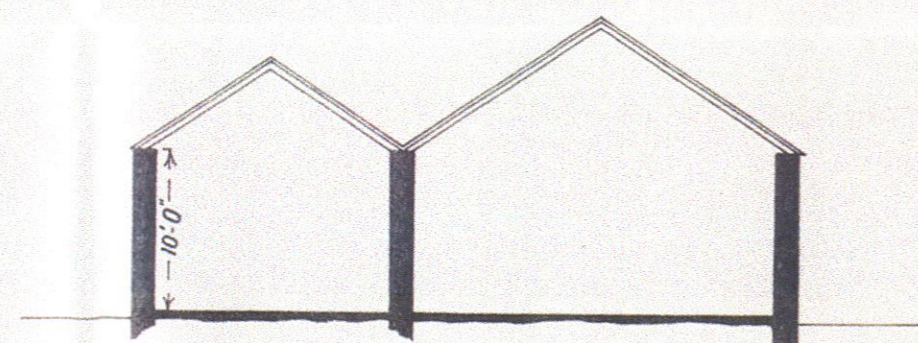
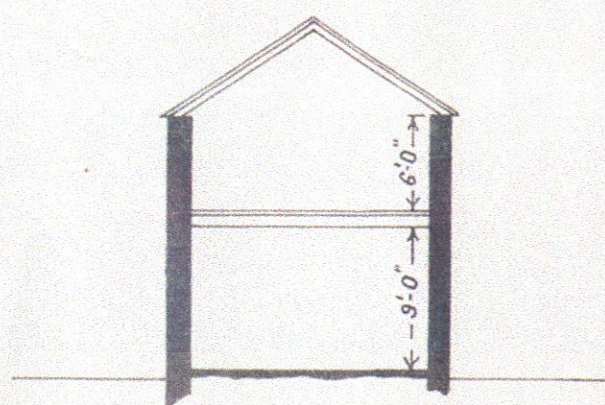
MINISTRY OF TRANSPORT.
 SESSION 1936-37.
FOWEY HARBOUR
 PROVISIONAL ORDER 1937.



SCALE 33 FEET TO AN INCH
 Feet 10 0 10 20 30 40 50 100 150 200 Feet



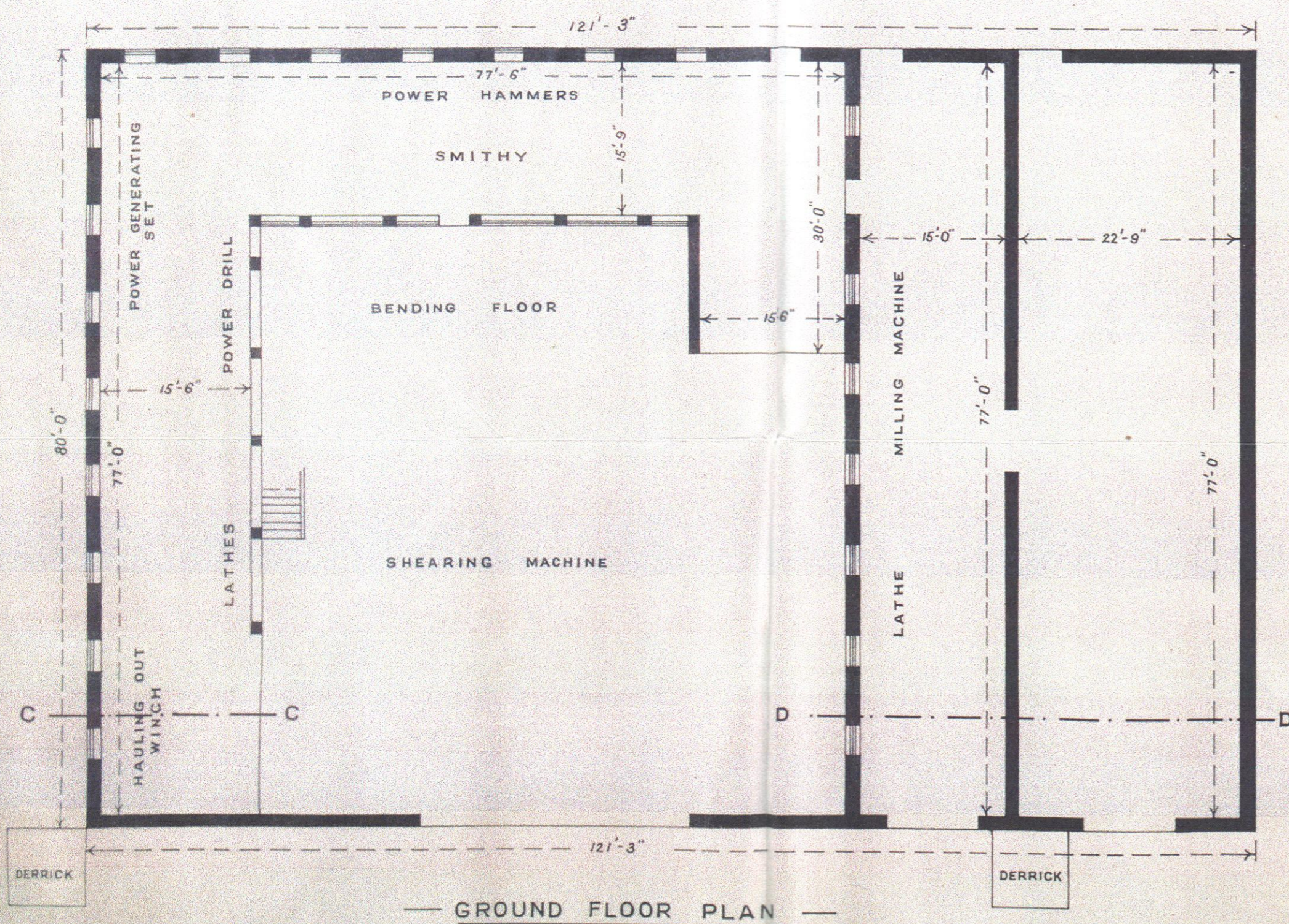
SECTION A-A



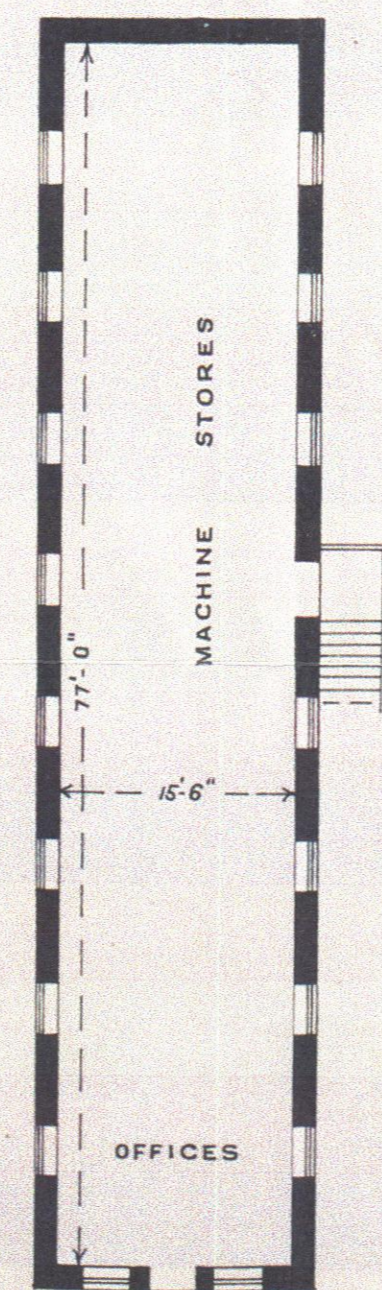
SECTION C-C

SECTION D-D

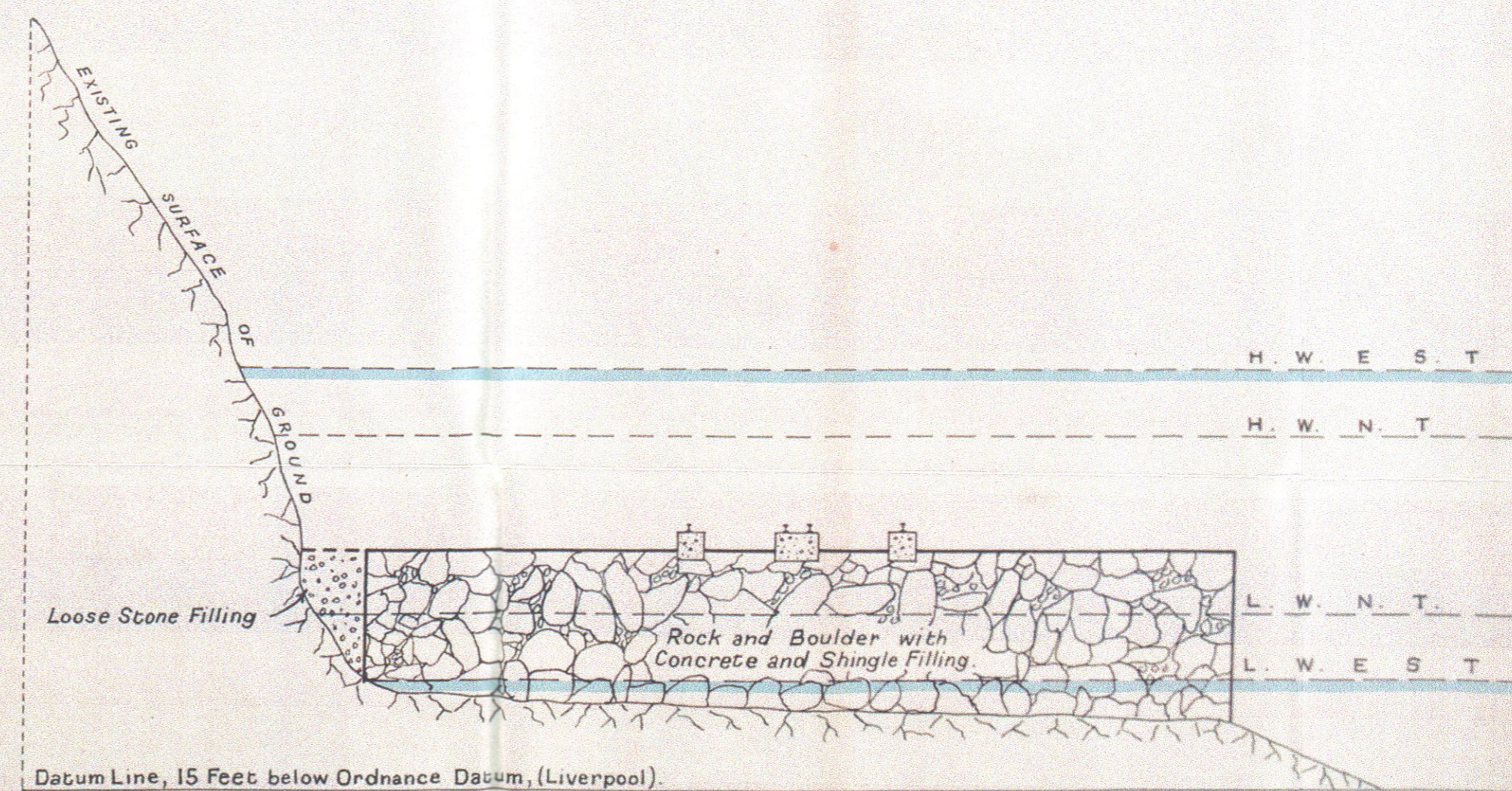
SCALE FOR SECTIONS A-A & B-B 8 FEET TO AN INCH
 Feet 10 5 0 10 20 30 40 50 Feet



GROUND FLOOR PLAN



UPPER FLOOR PLAN OVER NORTH BAY.



SECTION B-B