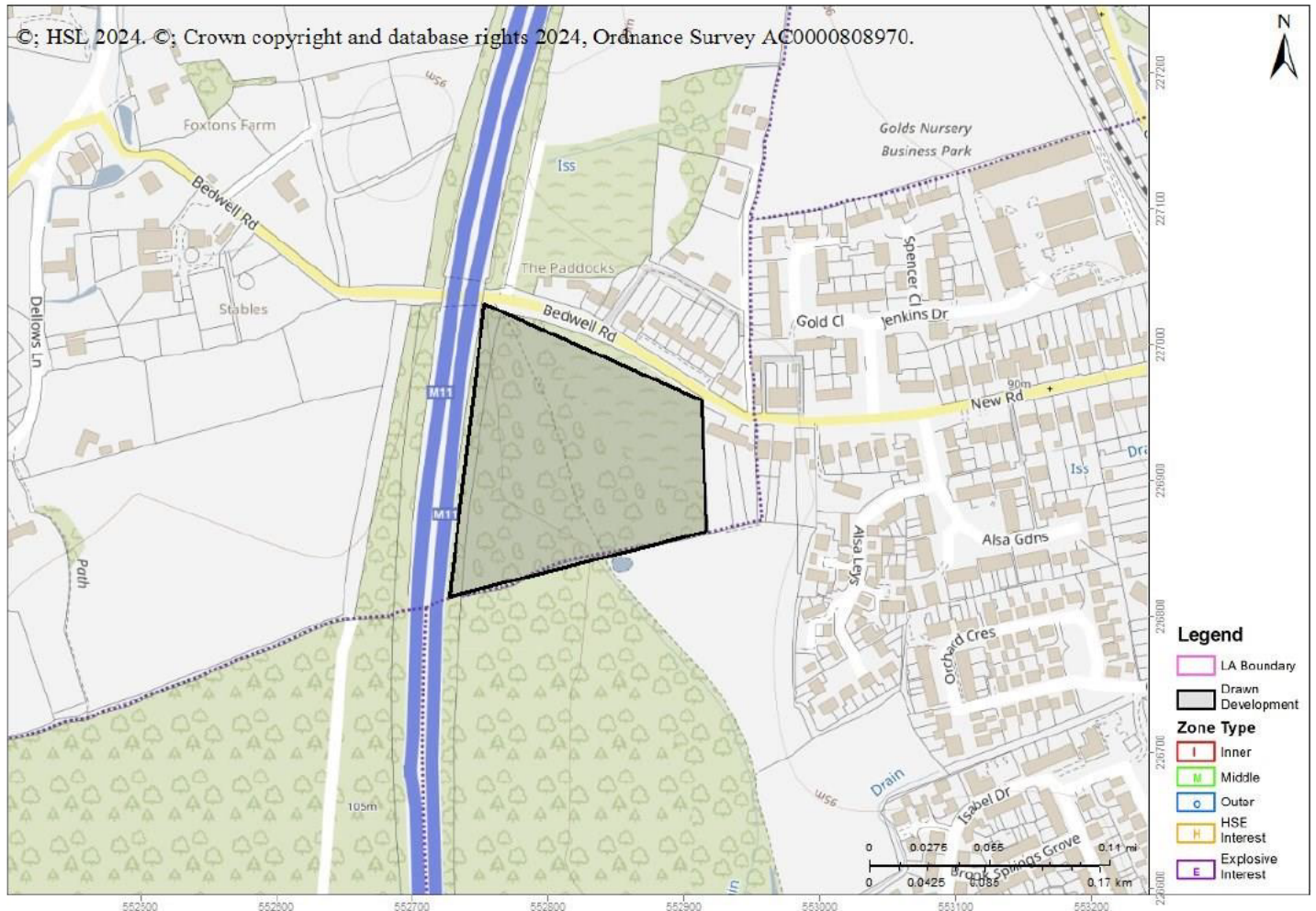


## Advice : HSL-240805104024-1805 Does Not Cross Any Consultation Zones

Your Ref: S62A/2024/0049

Development Name: Land South of Bedwell Road, Elsenham

Comments: Up to 50 market and affordable dwellings, public open space and associated highways and drainage infrastructure - all matters reserved except access



The proposed development site which you have identified does not currently lie within the consultation distance (CD) of a major hazard site or major accident hazard pipeline; therefore at present HSE does not need to be consulted on any developments on this site. However, should there be a delay submitting a planning application for the proposed development on this site, you may wish to approach HSE again to ensure that there have been no changes to CDs in this area in the intervening period.

This advice report has been generated using information supplied by [REDACTED] at The Planning Inspectorate on 05 August 2024.