

We The Curious

Hotel Building 8

Anchor Point

MILLENNIUM PROMENADE

Millennium Square

Balmoral House

CATHEDRAL WALK

EXPLORE LANE

Waverley House

Building 11

CANONS WAY

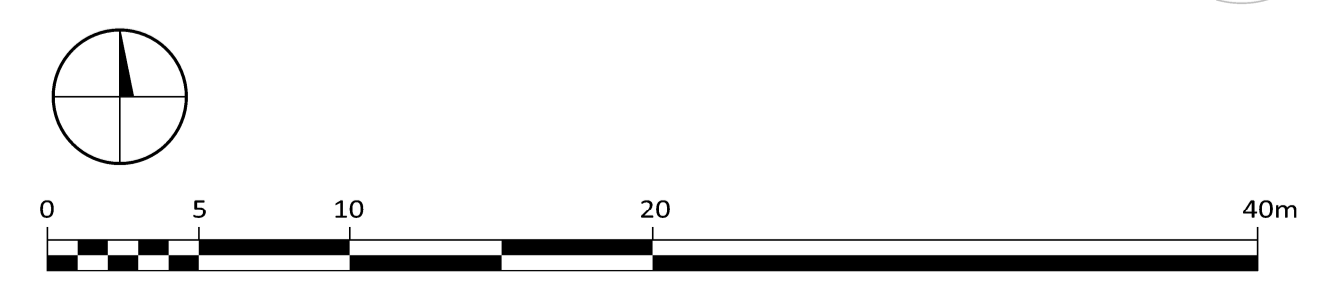
# HARBOUR VIEW BRISTOL

Drawing title: **Site Plan**      Amendments

Drawing No.: **3716-HAR-SRA-XX-XX-DR-A-PL-202**      Revision

Project No.	Location	Originator	Fence	Special	Form	Disc	System	Number	Date	Reason for Issue
GD		MR						A1 Scale 1:250	21/06/2024	PLANNING

## SRA | ARCHITECTS



Station House, Ashley Avenue Bath BA1 3DS | 01225 827444 | www.sra-architects.co.uk © (UK 2024) SRA Architects Ltd.  
 Notes  
 SRA ARCHITECTS Ltd accepts no liability for use of this drawing by other parties other than the party for whom it was prepared, or for purposes other than those for which it was prepared.  
 When the above drawing is issued in DWG format it is an uncontrolled version issued to enable the recipient to prepare their own documents/models/drawings for which they are solely responsible. It is based on background information current at the time of issue. SRA ARCHITECTS Ltd accepts no liability for any such alterations or additions to or discrepancies arising out of changes to such background information which occur after it is issued by SRA ARCHITECTS Ltd.  
 Responsibility is not accepted for errors made by others in scaling from this drawing.