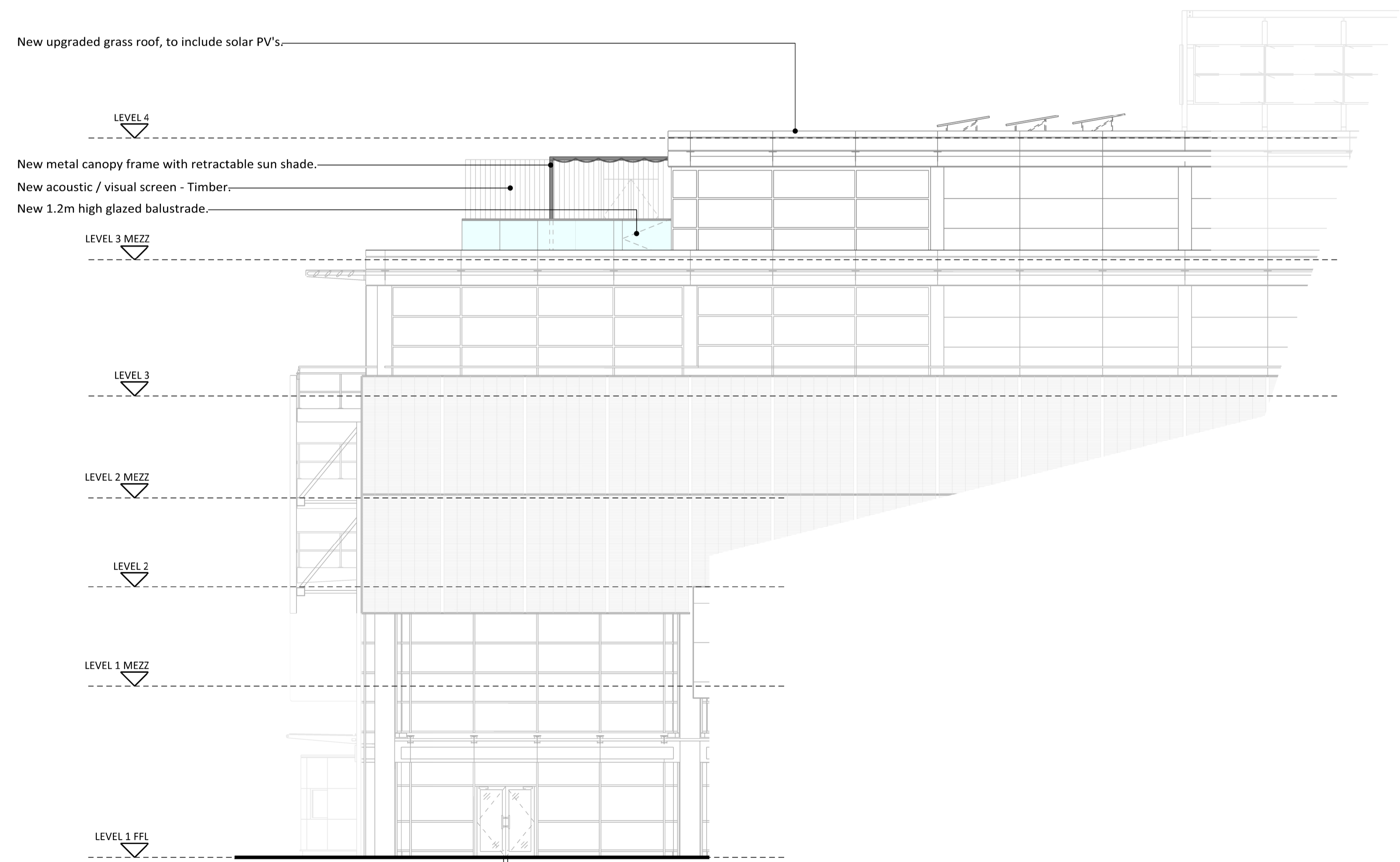


New metal balustrade along line of dedicated fire escape route.
To match existing on West side.

New acoustic / visual screen - Timber.

LEVEL 4
New metal canopy frame with retractable sun shade.
New access doors
New glazing panels.
New access doors
New 1.2m high glazed balustrade.
LEVEL 3 MEZZ



New upgraded grass roof, to include solar PV's.

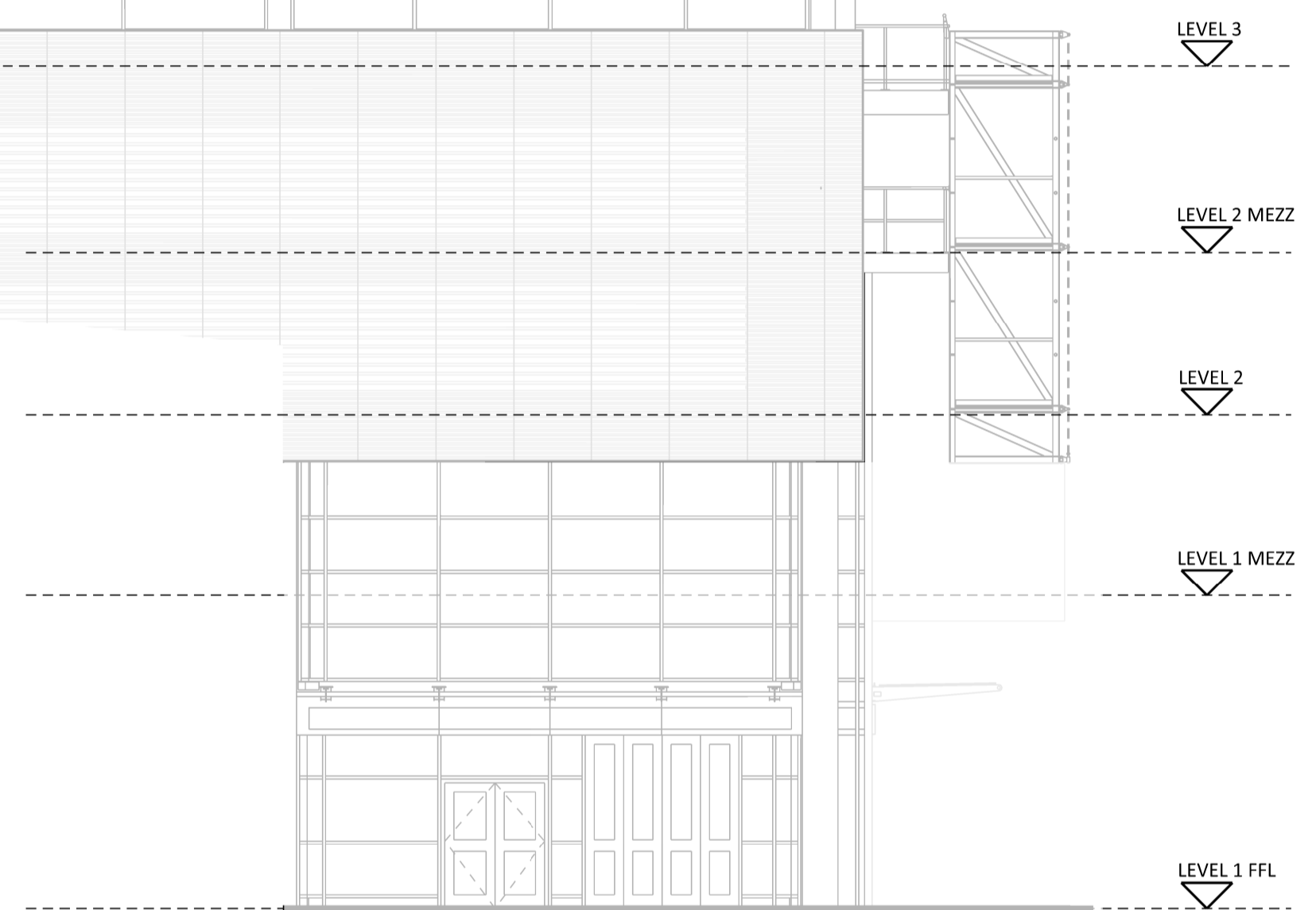
LEVEL 4

New metal canopy frame with retractable sun shade.

New acoustic / visual screen - Timber.

New 1.2m high glazed balustrade.

LEVEL 3 MEZZ



South Elevation

LEVEL 3

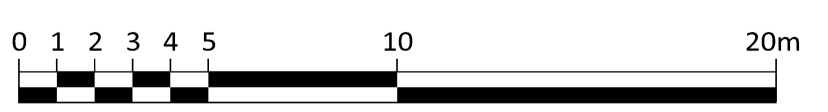
LEVEL 2 MEZZ

LEVEL 2

LEVEL 1 MEZZ

LEVEL 1 FFL

East Elevation



Notes:

Refer to Planning drawing:
3716-HAR-SRA-XX-XX-DR-A-PL-235 - East and South Elevations Proposed
for full elevations

HARBOUR VIEW BRISTOL

Drawing title: **East and South Elevation** Amendments

Drawing No. **3716-HAR-SRA-XX-XX-DR-A-PL-236** Revision

Project No.	Location	Originator	Phase	Space	Form	Disc.	System	Number	Date	Reason for Issue
GD		MR						A1 Scale 1:100	21/06/2024	PLANNING

SRA | ARCHITECTS

Ston House, Ashley Avenue Bath BA1 3DS | 01225 827444 | www.sra-architects.co.uk

© (UK 2024) SRA Architects Ltd.

Notes

SRA ARCHITECTS Ltd accepts no liability for use of this drawing by other parties other than the party for whom it was prepared, or for purposes other than those for which it was prepared.

When the above drawing is issued in DWG format it is an uncontrolled version issued to enable the recipient to prepare their own documents/models/drawings for which they are solely responsible. It is based on background information current at the time of issue. SRA ARCHITECTS Ltd accepts no liability for any such alterations or additions to or discrepancies arising out of changes to such background information which occur after it is issued by SRA ARCHITECTS Ltd.

Responsibility is not accepted for errors made by others in scaling from this drawing.