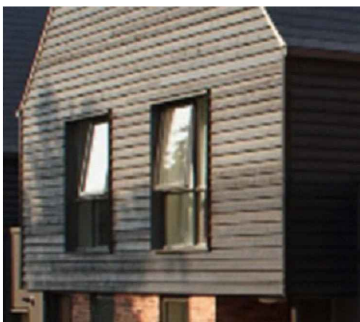




M1 - Brickwork, to relate positively to The Avenue development



M2 - Timber shingles, drawing upon the materials palette of The Avenue



M3 - Weatherboarding, relating to The Avenue development



M4 - Cladding to feature elements



M5 - Roof tiles



M6 - Roof slates



M7 - Green roof to the clubhouse



M8 - Sheet roofing to the clubhouse and flat roofed garages



M9 - Doors and door canopies



M10 - Grey colour coated windows



M11 - Black rainwater goods



M12 - Permeable blacktop to principal roads



M13 - Permeable block paving to shared surfaces



M14 - Permeable block paving to delineate parking bays



M15 - Permeable block paving to parking bays and driveways



M16 - Concrete paving to private pathways and patio areas



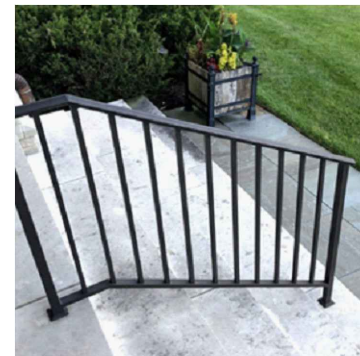
M17 - Timber fencing to the shared rear garden boundaries



M18 - Estate railings around the cricket pitch



M19 - Black metal gates to the Mount Pleasant shared driveway



M20 - Black metal railings to the ramp and steps to the clubhouse



architecture  
planning  
project management  
interior design  
graphics

www.colesarchitects.co.uk

Bank House, 2 High Street, Olney, Buckinghamshire MK46 4YY  
t:01234 241758 e:proactive@colesarchitects.co.uk

NOTE: NO DIMENSIONS TO BE SCALED FOR CONSTRUCTION. DRAWINGS MAY BE SCALED FOR PLANNING PURPOSES ONLY. ALL DIMENSIONS TO BE CHECKED ON SITE. COPYRIGHT RESERVED.

PROJECT: Former Friends School Fields Saffron Walden

CLIENT:

ISSUE STATUS:

DESIGN  B of Q  CONSTRUCTION  RECORD

DRAWING TITLE: Materials Schedule

SCALE: NTS (A3) DATE: July 2024 BY: JB

DRAWING NO. REVISION:

23110 (D) 025 -

REV: BY: DATE: DETAILS: