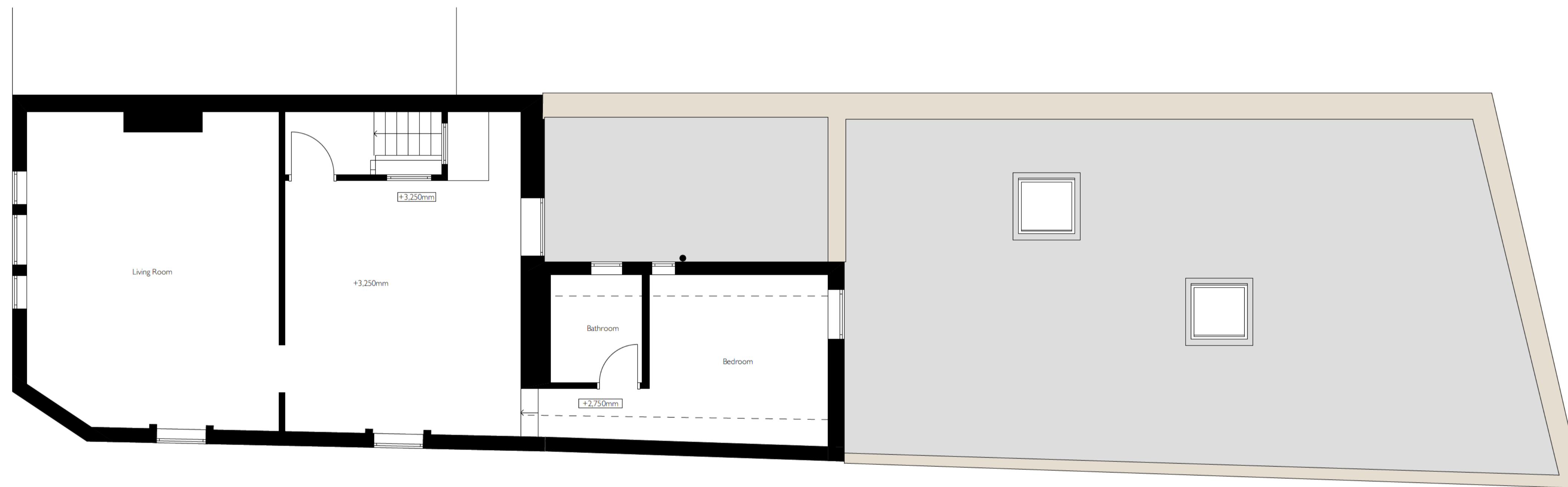


Proposed Ground Floor Plan



Proposed First Floor Plan

Note - All changes to internal plans subject to separate Class MA Application.

Drawing Key

- Studio Flat
- One Bedroom Flat
- Two Bedroom Flat
- Circulation

Area Schedule (Internal Area)

Ground Floor - 158m²
 First Floor - 66m²
 Total Area - 224m²

PL05 Rev /
 Proposed Floor Plans

1:50 @ A1

NICHOLAS MORLEY ARCHITECTS LTD
 Suite 10 Corum 2 Corum Office Park Crown Way Warmley Bristol BS30 8FJ

