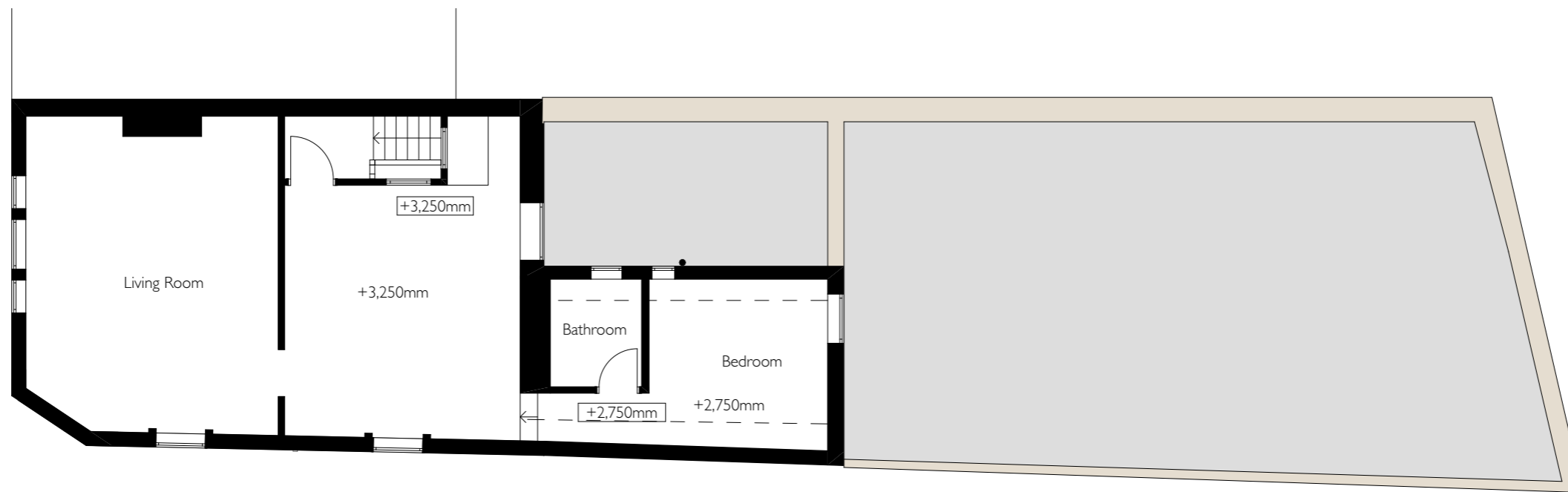


Ground Floor Plan



First Floor Plan

1 Repton Road, Bristol, BS4 3LS

PL02 Rev /
Existing and Proposed Floor Plans

Scale 1:100 @ A3

NICHOLAS MORLEY ARCHITECTS LTD
Suite 10 Corum 2 Corum Office Park Crown Way Warmley Bristol BS30 8FJ

