

## Appendix C Environmental Sound Surveys

### Details of environmental sound surveys

- C.1 Specific details of each of the four surveys are contained in the tables and figures below.
- C.2 The sound level meters were programmed to record the A-weighted  $L_{eq}$ ,  $L_{90}$ ,  $L_{10}$  and  $L_{max}$  noise indices for consecutive 15-minute sample periods for the duration of the survey.
- C.3 Where useful for attended surveys, the marker function was used to demarcate certain events, such as aircraft.

### Measurement positions

- C.4 The sound level meters were located as indicated in [Appendix B](#) and described in the survey summary table below.
- C.5 In accordance with BS 7445-2:1991 'Description and measurement of environmental noise – Part 2: Guide to the acquisition of data pertinent to land use', the measurements were undertaken under free-field conditions.

### Equipment

- C.6 Details of the equipment used during the survey are provided in the tables describing each specific survey. The sound level meters were calibrated before and after the survey; no significant change ( $\pm 0.2$  dB) in the calibration level was noted.

### Weather Conditions

- C.7 Weather conditions were determined both at the start and on completion of the survey. It is considered that the meteorological conditions were appropriate for the environmental noise measurements. The survey summary tables below present the weather conditions recorded on site at the beginning and end of the survey.

### Results

- C.8 The results of the survey are considered to be representative of the typical incident noise levels at the proposed site.
- C.9 The results of the surveys are presented in the time history graphs which follow and in the main body of the report.

### NMP1: Thaxted Road

Description	Model / serial no.	Calibration date	Calibration certificate no.
Class 1 Sound level meter	Svantek 977/ 69747	20/08/2020	14015672
Condenser microphone	ACO Pacific 7052E / 70829		
Preamplifier	Svantek SV12L / 73687		
Calibrator	Svantek SV 40A / 10843	29/07/2021	1500732-1

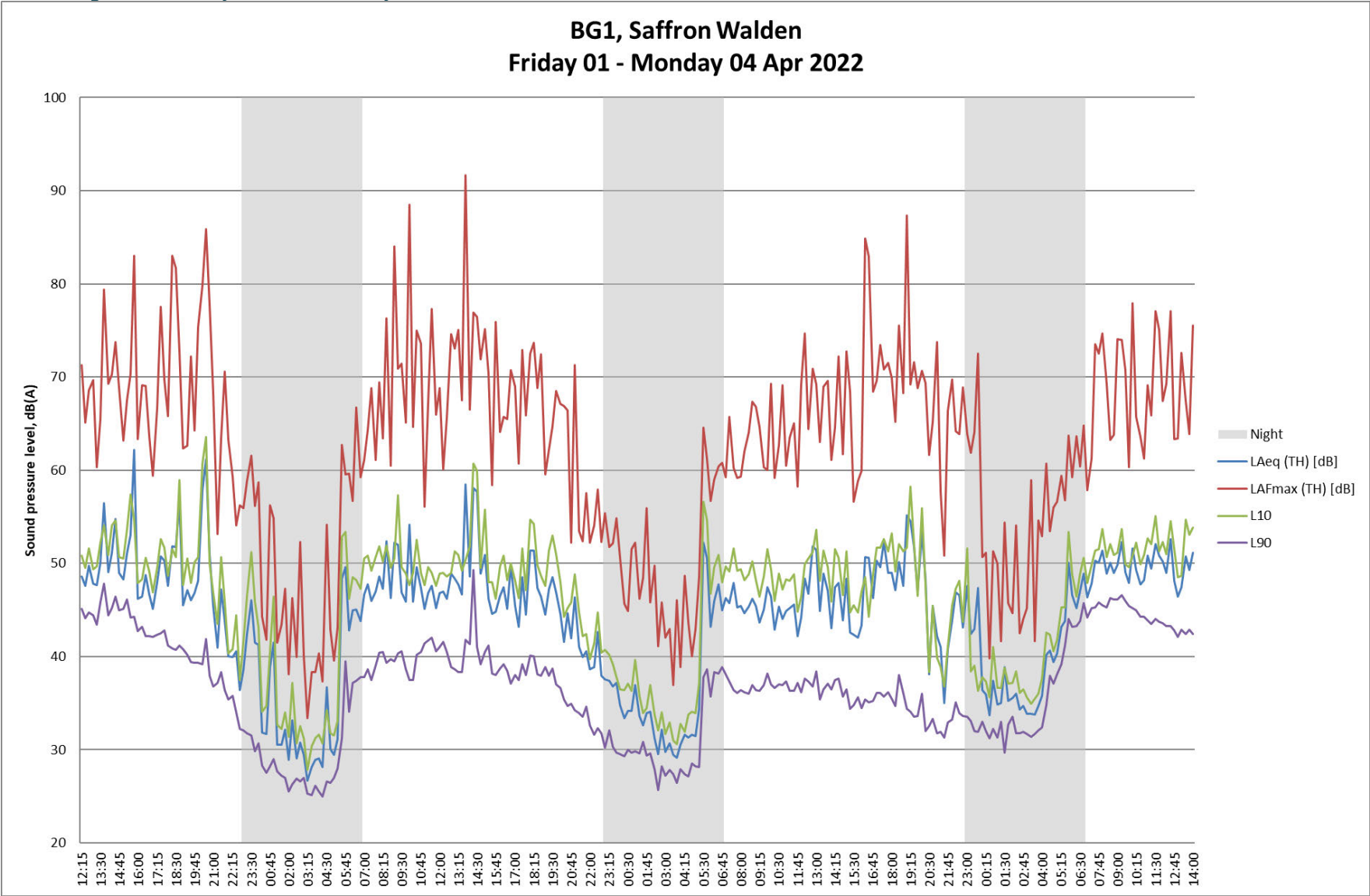
Weather Conditions				
Measurement Location	Date/Time	Description	Beginning of Survey	End of Survey
As indicated on Appendix B; 8.5m from centre of road, 2.5m height.	11.30 1 Apr - 14.45 2 Apr 2022	Temperature (°C)	-	-
<p><b>Cloud Cover</b></p> <p>Symbol    Scale in oktas (eighths)</p> <p>0    Sky completely clear</p> <p>1</p> <p>2</p> <p>3</p> <p>4    Sky half cloudy</p> <p>5</p> <p>6</p> <p>7</p> <p>8    Sky completely cloudy</p> <p>(9) Sky obstructed from view</p>		Precipitation:	None	None
		Cloud cover (oktas – see guide)	8	3
		Presence of fog/snow/ice	No	No
		Presence of damp roads/wet ground	No	No
		Wind Speed (m/s)	n/a	n/a
		Wind Direction	n/a	n/a
		Conditions that may cause temperature inversion (i.e. calm nights with no cloud)	No	No
		Noise sources noted at setup and collection:	Local road traffic dominates – occasional aircraft and birdsong also audible.	

### BG1: Background noise survey

Description	Model / serial no.	Calibration date	Calibration certificate no.
Class 1 Sound level meter	Svantek 971 / 111624	18/06/2021	Factory conformation certificate
Condenser microphone	ACO Pacific 7052E / 80036		
Preamplifier	Svantek SV 18 / 112639		
Calibrator	Svantek SV 33B / 83850	20/10/2021	1501134-1

Weather Conditions					
Measurement Location	Date/Time	Description	Beginning of Survey	End of Survey	
As indicated on Appendix B; lamp-post on Peal Rd.	12.15 1/4/22 - 14.15 4/4/22	Temperature (°C)	n/a	12	
<p><b>Cloud Cover</b></p> <p>Symbol Scale in oktas (eighths)</p> <p>0 Sky completely clear</p> <p>1</p> <p>2</p> <p>3</p> <p>4 Sky half cloudy</p> <p>5</p> <p>6</p> <p>7</p> <p>8 Sky completely cloudy</p> <p>(9) Sky obstructed from view</p>		Precipitation:	n/a	None	
		Cloud cover (oktas – see guide)	n/a	8	
		Presence of fog/snow/ice	n/a	No	
		Presence of damp roads/wet ground	n/a	Damp	
		Wind Speed (m/s)	n/a	2	
		Wind Direction	n/a	W	
		Conditions that may cause temperature inversion (i.e. calm nights with no cloud)	n/a	No	
		Noise sources noted:	Nearby road traffic, hedge cutter, bird calls, aircraft.		

Figure A1: Survey BG1 Time history.



### COM1: Recycling centre noise survey

Description	Model / serial no.	Calibration date	Calibration certificate no.
Class 1 Sound level meter	Svantek 977/ 69747	20/08/2020	14015672
Condenser microphone	ACO Pacific 7052E / 70829		
Preamplifier	Svantek SV12L / 73687		
Calibrator	Svantek SV 40A / 10843	29/07/2021	1500732-1

Weather Conditions					
Measurement Location	Date/Time	Description	Throughout Survey		
As indicated on Appendix B.	07:00 to 17:00 25 <sup>th</sup> to 28 <sup>th</sup> Apr 2022	Temperature (°C)	variable		
<p><b>Cloud Cover</b></p> <p>Symbol Scale in oktas (eighths)</p> <p>0 Sky completely clear</p> <p>1</p> <p>2</p> <p>3</p> <p>4 Sky half cloudy</p> <p>5</p> <p>6</p> <p>7</p> <p>8 Sky completely cloudy</p> <p>(9) Sky obstructed from view</p>		Precipitation:	Occasional, light		
		Cloud cover (oktas – see guide)	variable		
		Presence of fog/snow/ice	No		
		Presence of damp roads/wet ground	Occasionally		
		Wind Speed (m/s)	variable		
		Wind Direction	variable		
		Conditions that may cause temperature inversion (i.e. calm nights with no cloud)	No		
		Noise sources noted:	Recycling centre dominant when present. Also aircraft audible, distant road traffic, construction work from Bellway site to north.		

## COM2: Skate park noise survey

Description	Model / serial no.	Calibration date	Calibration certificate no.
Class 1 Sound level meter	Svantek 977/ 97446	12/02/2021	Factory conformation certificate
Condenser microphone	Microtech MK255 / 20194		
Preamplifier	Svantek SV12L / 106487		
Calibrator	Svantek SV 30A / 10847	30/06/2021	1500577-1

Weather Conditions						
Measurement Location	Date/Time	Description	Beginning of Survey	End of Survey		
As indicated on Appendix B; approx. 2m within site from boundary	13:31 to 14:33 2 <sup>nd</sup> Apr 2022	Temperature (°C)	-	-		
<p><b>Cloud Cover</b></p> <p>Symbol Scale in oktas (eighths)</p> <p>0 Sky completely clear</p> <p>1</p> <p>2</p> <p>3</p> <p>4 Sky half cloudy</p> <p>5</p> <p>6</p> <p>7</p> <p>8 Sky completely cloudy</p> <p>(9) Sky obstructed from view</p>			Precipitation:	None	None	
			Cloud cover (oktas – see guide)	2	2	
			Presence of fog/snow/ice	No	No	
			Presence of damp roads/wet ground	Dry	Dry	
			Wind Speed (m/s)	n/a	n/a	
			Wind Direction	n/a	n/a	
			Conditions that may cause temperature inversion (i.e. calm nights with no cloud)	No	No	
			Noise sources noted:	Road traffic, occasional aircraft audible, birdcalls, distant construction work.		