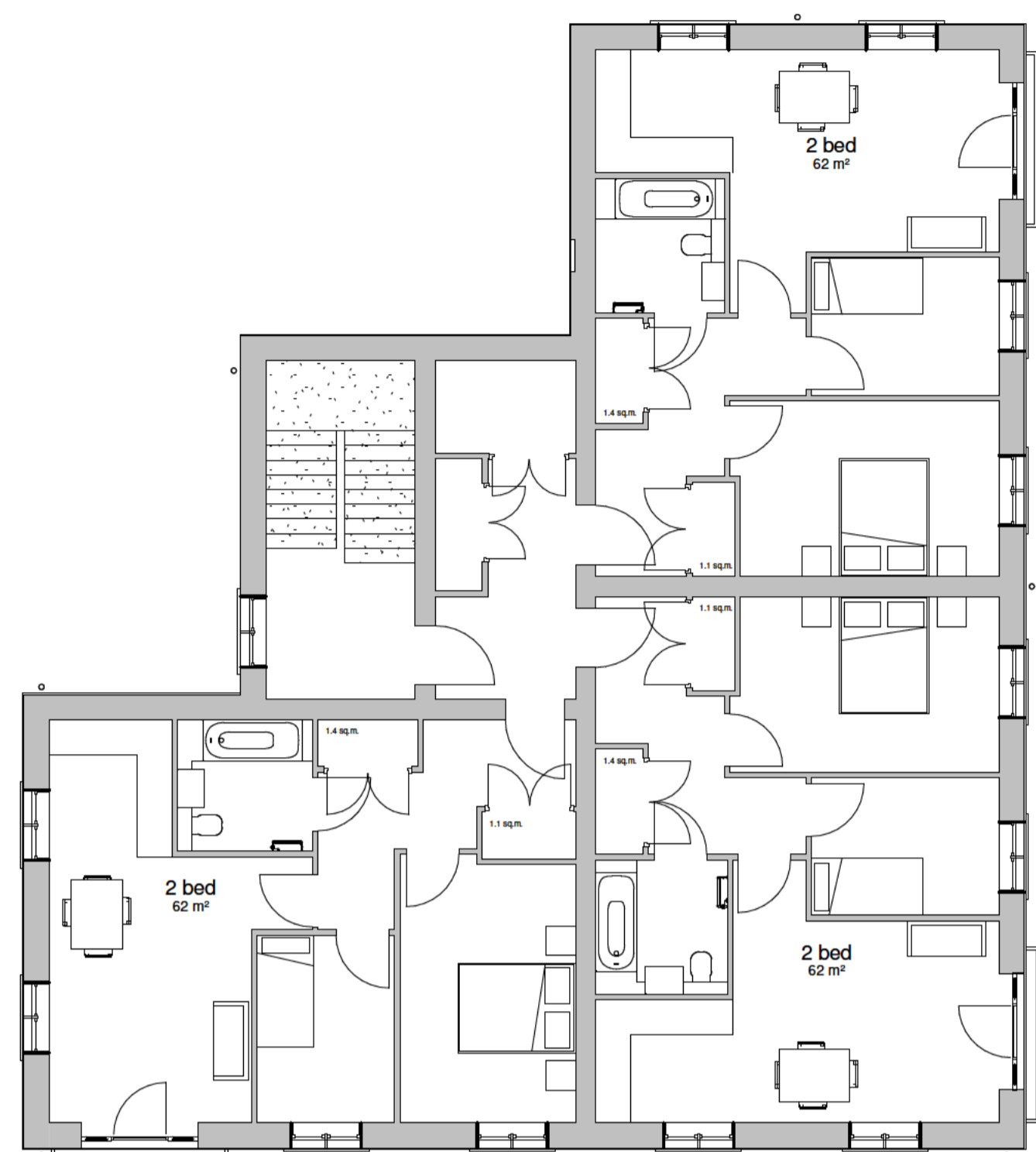


NOTES

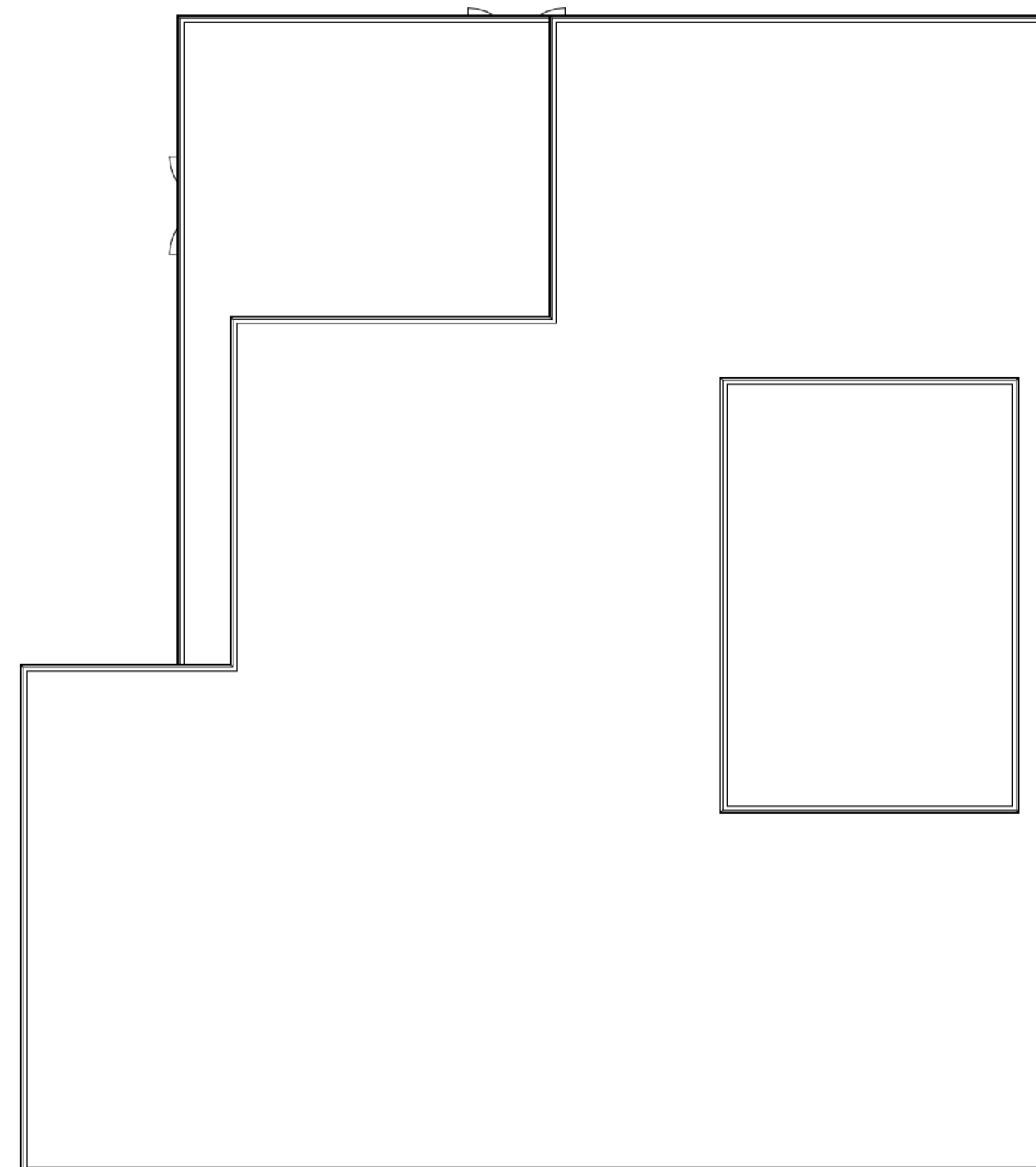
Kitchen and bedroom layouts shown are indicative, to be designed by others

windows to have equal casements



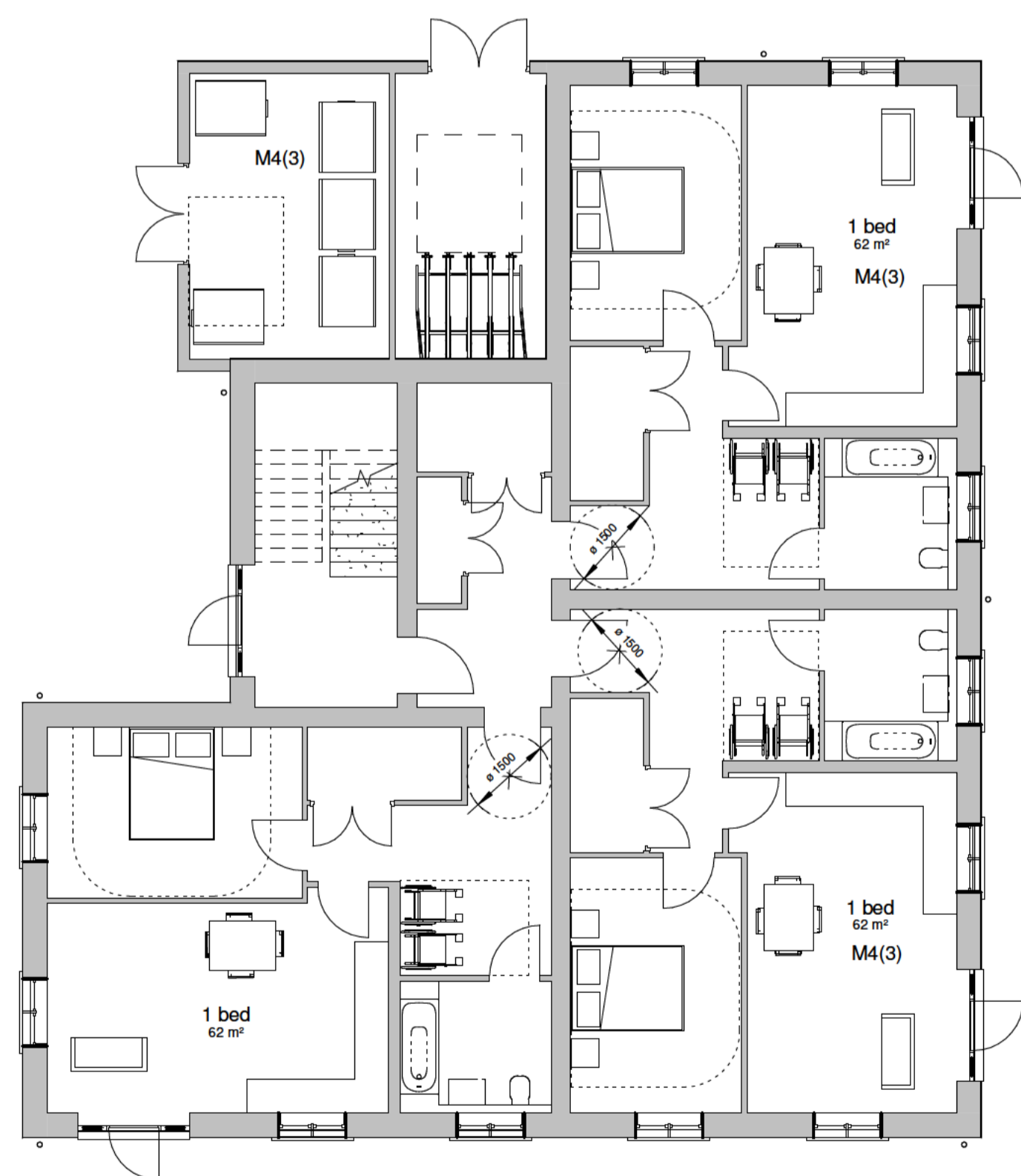
Second floor plan

1:100



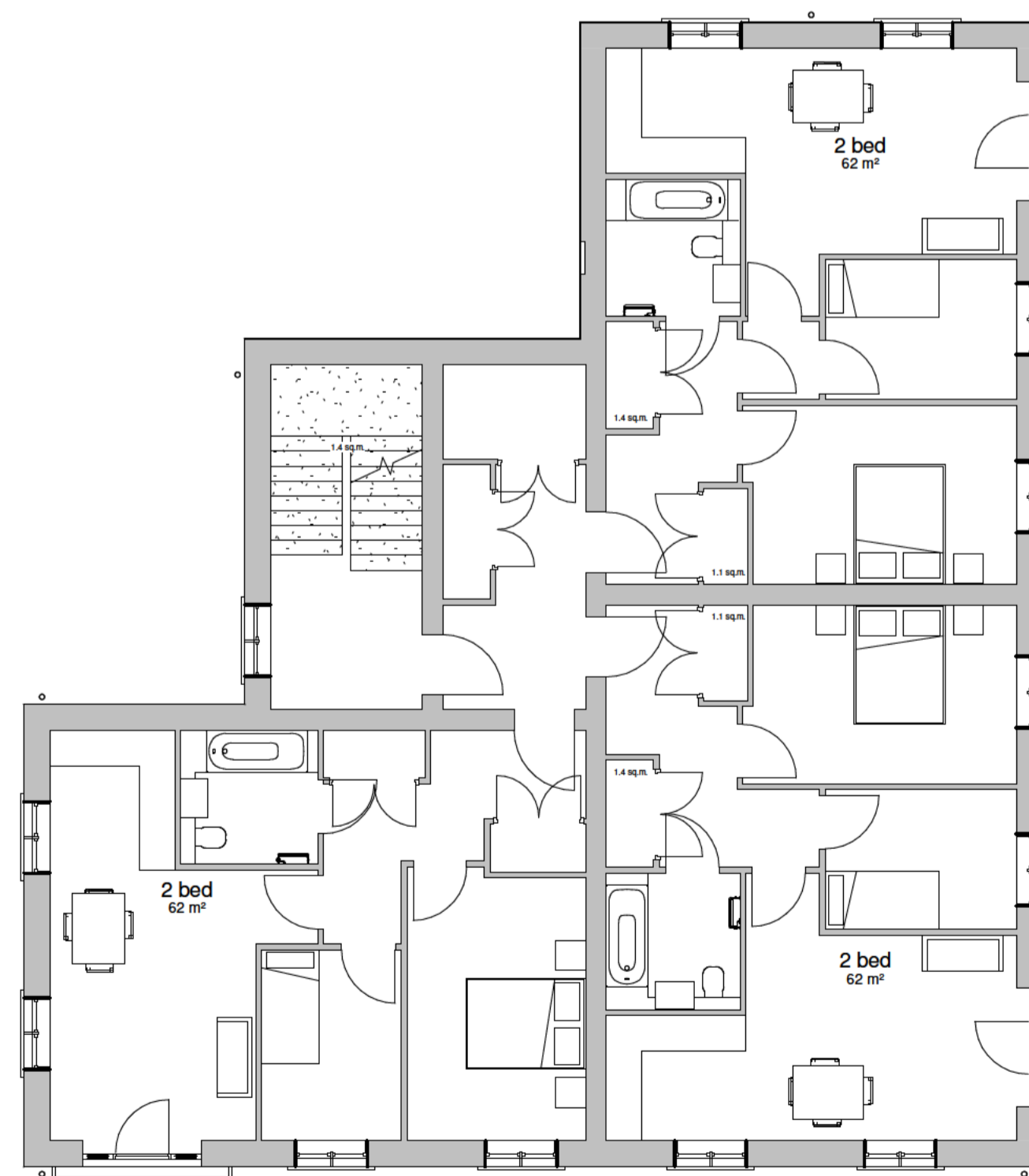
Roof plan

1:100



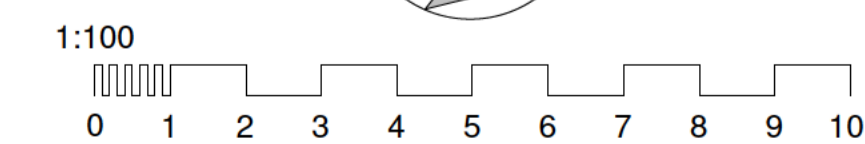
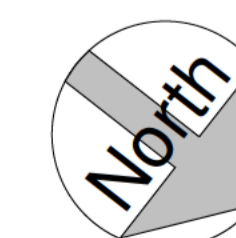
Ground floor plan

1:100



First floor plan

1:100



REV	AMENDMENTS	DATE
E	North elevation Ground Floor windows to 1050mm North & South elevation "Tower" feature width increased by circa 1500mm East elevation left two Ground Floor windows to 1050mm high East & West elevation "Tower" feature width decreased by circa 1000mm South elevation main entrance door and windows over moved left circa 1000mm South elevation single upper windows bricked up	24/01/24
D	building handed	24/10/23
C	general layout revisions	11/10/23
B	flat roof, layout revisions	25/09/23
A	building handed, entrance porch	31/08/23

DRAWN BY	DATE
Author	08/09/23
SCALE (@ A1)	PROJECT NUMBER
1:100	Project Number
CHECKED BY	APPROVED
Checker	

TITLE  
Flat building 1 floor plans-affordable building

PROJECT  
Thaxted Road, Saffron Walden

DRAWING NUMBER  
**23 0067-27 E**