

Air Quality and Dust Monitoring Monthly Report – May 2024

Solihull Metropolitan Borough Council



Department for Transport

High Speed Two (HS2) Limited has been tasked by the Department for Transport (DfT) with managing the delivery of a new national high speed rail network. It is a non-departmental public body wholly owned by the DfT.

High Speed Two (HS2) Limited,
Two Snowhill
Snow Hill Queensway
Birmingham B4 6GA

Telephone: 08081 434 434

General email enquiries: HS2enquiries@hs2.org.uk

Website: www.gov.uk/hs2

A report prepared by EWCs and MWCCs on behalf of HS2 Ltd.

High Speed Two (HS2) Limited has actively considered the needs of blind and partially sighted people in accessing this document. The text will be made available in full on the HS2 website. The text may be freely downloaded and translated by individuals or organisations for conversion into other accessible formats. If you have other needs in this regard please contact High Speed Two (HS2) Limited.

© High Speed Two (HS2) Limited, 2024, except where otherwise stated.

Copyright in the typographical arrangement rests with High Speed Two (HS2) Limited.

This information is licensed under the Open Government Licence v2.0. To view this licence, visit www.nationalarchives.gov.uk/doc/open-government-licence/version/2 **OGI** or write to the Information Policy Team, The National Archives, Kew, London TW9 4DU, or e-mail: psi@nationalarchives.gsi.gov.uk. Where we have identified any third-party copyright information you will need to obtain permission from the copyright holders concerned.



Monthly Summary

- 1.1.1 This Summary Report is published in fulfilment of commitments detailed in the High Speed Rail (London-West Midlands) Environmental Minimum Requirements, Annex 1: Code of Construction Practice, for the nominated undertaker to present the results of air quality and dust monitoring undertaken in Solihull Metropolitan Borough Council (SMBC) during May 2024.
- 1.1.2 Figures 1 to Figure 3 in Appendix A present the current worksites together with the dust monitoring locations.
- 1.1.3 This summary should be read in conjunction with the overview monitoring report monthly available from www.gov.uk/government/collections/monitoring-the-environmental-effects-of-hs2, which highlights: the applicable standards and guidance, as well as the air quality and dust monitoring methodologies to be implemented by nominated undertakers throughout construction.
- 1.1.4 The current worksites, as presented in Appendix A, Figure 1 to Figure 3, include:

Sublot 2B2

Waste Lane Overbridge Satellite

- Galldris excavation works for Burton Green Tunnel.
- Jet washing the tunnel walls.

Carol Green Rail Underbridge

- Lascombe Culvert works.
- Haul road diversion.
- Crane for culvert installation.
- Wheel washer operating.
- Deliveries.

Sublot 2B3

Balsall Common Viaduct

- Public Right of Way M214 works.
- Pile cropping.
- Dig and replace.

Park Lane

- Material stockpile and reload.
- Moving plants.
- Park Lane traffic.

- Pile cropping for Public Right of Way M214.
- Haul road moving Articulated Dump Trucks (ADTs)/Excavators.
- Dig and replace.
- Structures Piling for Lavander Overbridge.
- Dig and replace works.

Sublot 5S

Coleshill Heath Road Underbridge

- Steel fixing.
- Adapt scaffold.
- Formwork install & strike formwork.
- Excavation.
- Fixing rebar & building formwork.
- Sheet piling.
- Fix reinforcement.
- Kicker install.
- Vehicle Restraint System (VRS) install.
- Ongoing material transport throughout the month during core hours (Monday to Friday 08:00 – 18:00).

Coleshill Heath Road

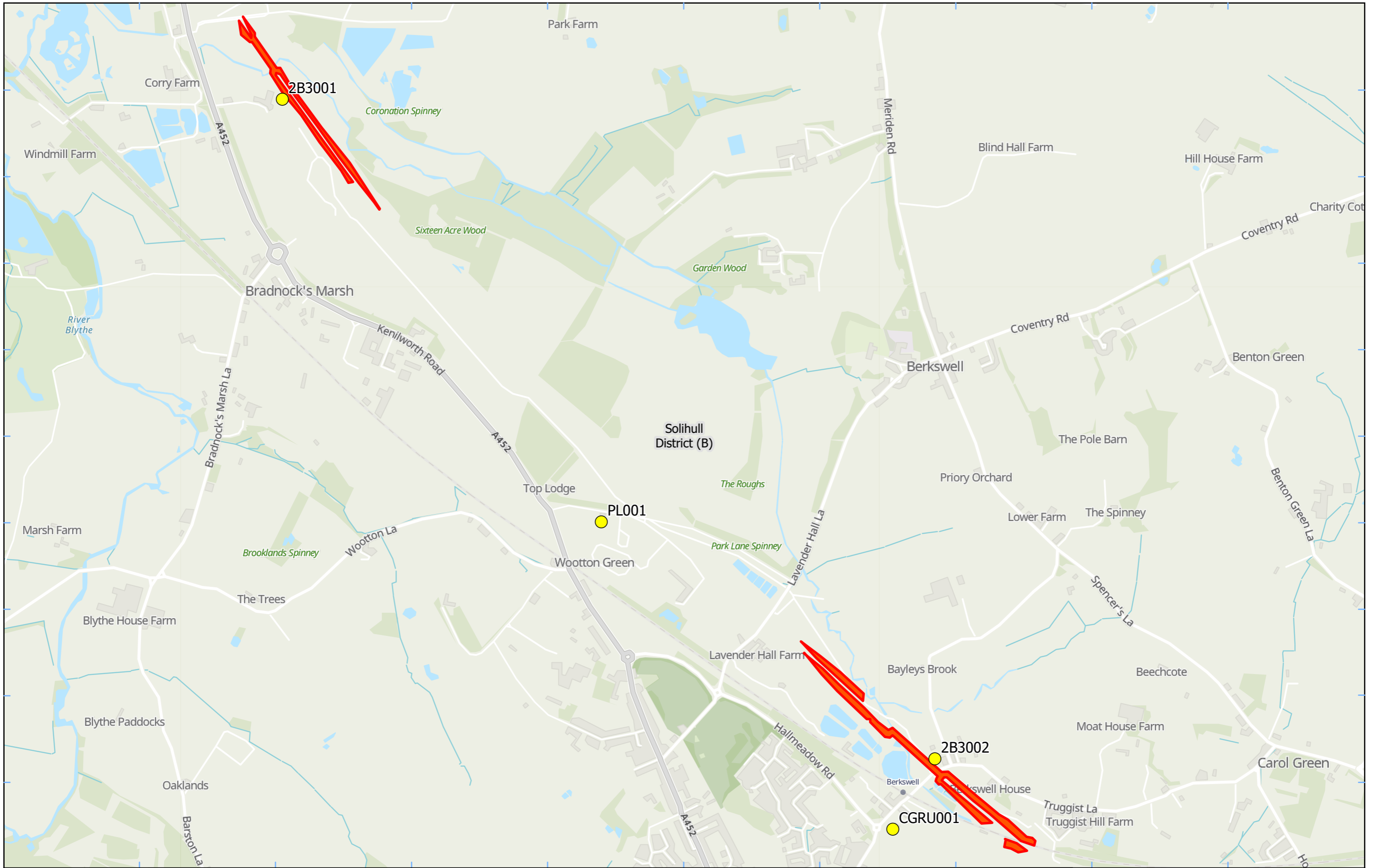
- Bachy Soletanche Balfour Beatty Ground Engineering joint venture (SB3) demobilisation.
- Ongoing material transport throughout the month during core hours (Monday to Friday 08:00 – 18:00).

- 1.1.5 Nine (9) dust monitors are installed around these worksites, where works are underway. These sites returned a low to medium dust risk rating.
- 1.1.6 Dust monitoring locations and results are presented in Appendix B, Table 1, together with line charts of monthly data from the dust monitors presented in Figure 4. All continuous dust monitoring is undertaken using indicative monitors. Despite being Environment Agency (MCERTS) certified, indicative monitors carry a higher level of uncertainty than reference monitors, and therefore cannot be strictly compared with Air Quality Standards for human health and the environment. The purpose of the monitoring undertaken is to ensure the effectiveness of the on-site mitigation.
- 1.1.7 The trigger level for PM₁₀ concentrations of 190 µg/m³, over a 1-hour period, in accordance with the updated guidance document '*Guidance on Monitoring in the Vicinity of Demolition and Construction Sites – (October 2018)*' has been applied.
- 1.1.8 Details of the trigger alert investigations and remediations are presented in Appendix B, Table 2.

1.1.9 There were no (0) complaints received during this reporting period (May 2024).

Appendix A – Worksites and Monitoring Locations

Figures 1-3: Worksites and Monitoring Locations within SMBC



Legend

- Dust Monitor
- District Borough Unitary Boundaries
- Worksite

Service Layer Credits: GB Topographic: Contains OS data © Crown Copyright and database right 2023
Contains data from OS Zoomstack

Map Number

Map Name
**Worksite and Monitoring Locations
In SMBC (Sheet 1)**

Solihull Metropolitan Borough

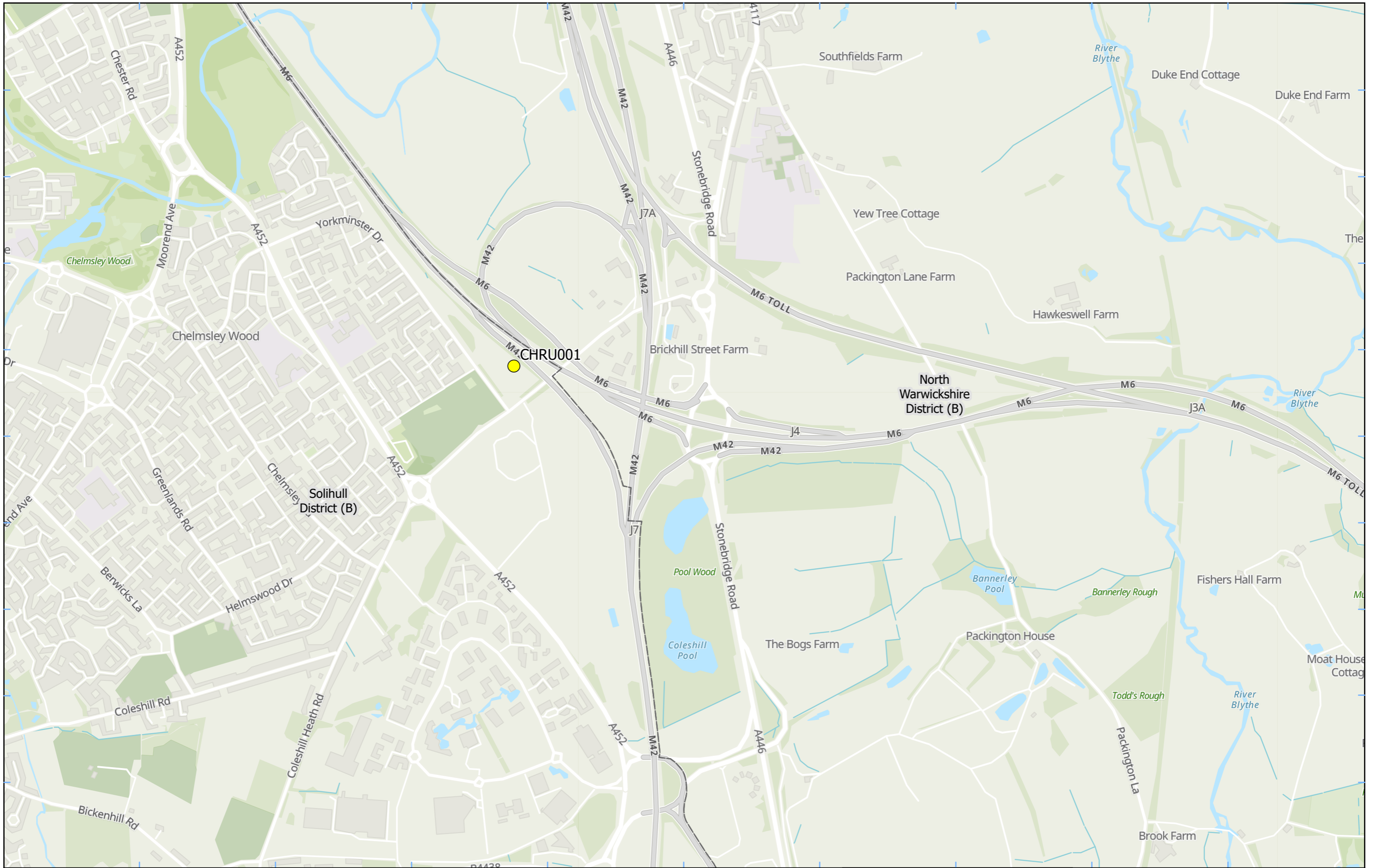
HS2 Ltd accept no responsibility for any circumstances, which arise from the reproduction of this map after alteration, amendment or abbreviation or if it is issued in part or issued incomplete in any way.

Registered in England. Registration number 06791686.
Registered office: 2 Snowhill, Queensway,
Birmingham B4 6GA.

Scale at A3: 1:12,000

© Crown copyright and database rights 2024.
Ordnance Survey Licence Number 100049190.

Doc Number: Date: 11/03/24



Legend
 Dust Monitor
 District Borough Unitary Boundaries

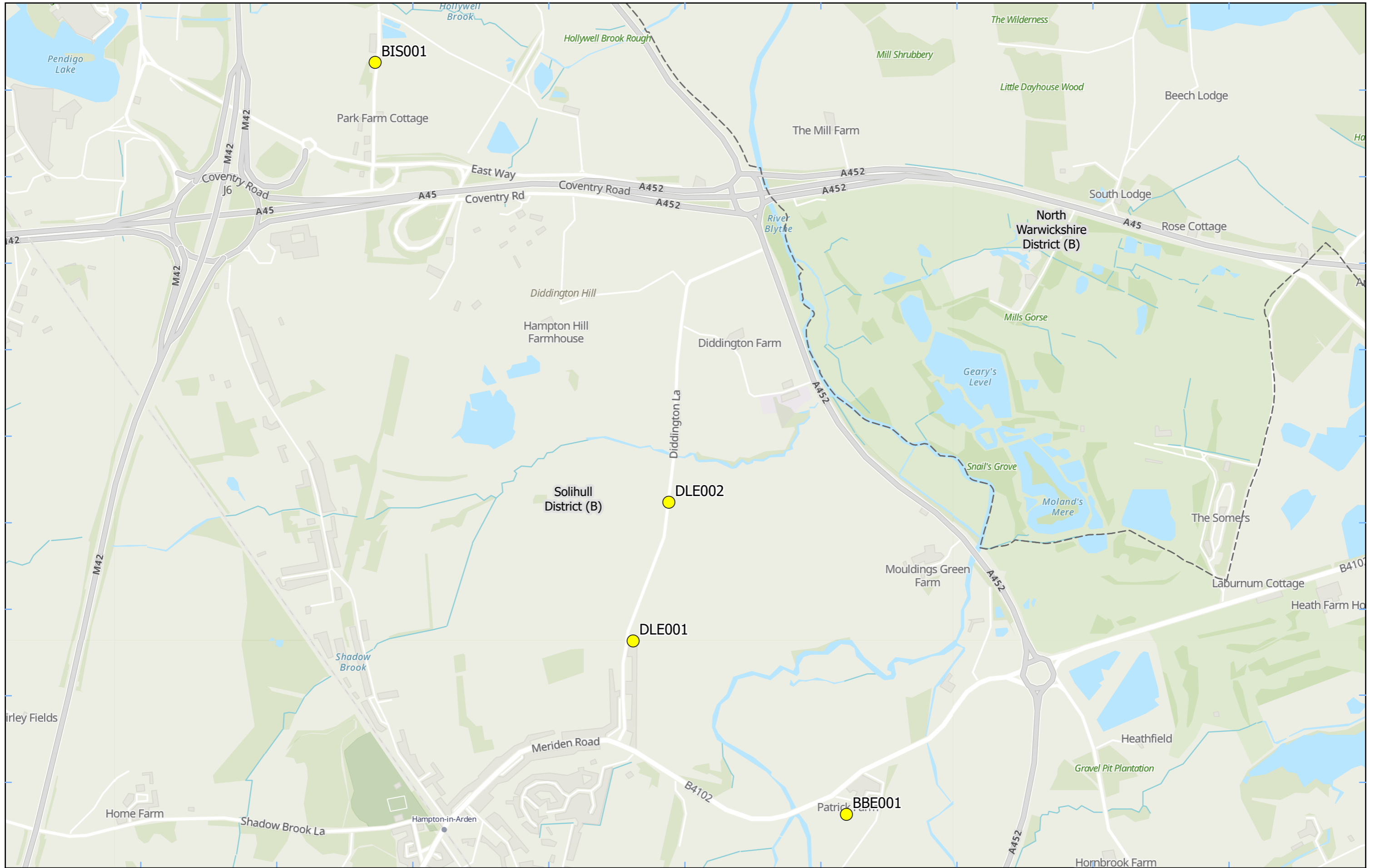
Service Layer Credits: GB Topographic: Contains OS data © Crown Copyright and database right 2023
 Contains data from OS Zoomstack

Map Number
 Map Name
**Monitoring Locations
 In SMBC (Sheet 2)**
 Solihull Metropolitan Borough

HS2 Ltd accept no responsibility for any circumstances, which arise from the reproduction of this map after alteration, amendment or abbreviation or if it is issued in part or issued incomplete in any way.

Scale at A3: 1:12,000

 Metres
 © Crown copyright and database rights 2024.
 Ordnance Survey Licence Number 100049190.
 Doc Number:
 Date: 26/03/24



Legend

- Dust Monitor
- District Borough Unitary Boundaries

Service Layer Credits: GB Topographic: Contains OS data © Crown Copyright and database right 2023
Contains data from OS Zoomstack

Map Number

Map Name
**Monitoring Locations
In SMBC (Sheet 3)**

Solihull Metropolitan Borough

HS2 Ltd accept no responsibility for any circumstances, which arise from the reproduction of this map after alteration, amendment or abbreviation or if it is issued in part or issued incomplete in any way.

Registered in England. Registration number 06791686.
Registered office: 2 Snowhill, Queensway,
Birmingham B4 6GA.

© Crown copyright and database rights 2024.
Ordnance Survey Licence Number 100049190.

Scale at A3: 1:10,000

Metres

Doc Number: **Date: 11/03/24**

Appendix B – Dust Monitoring Results

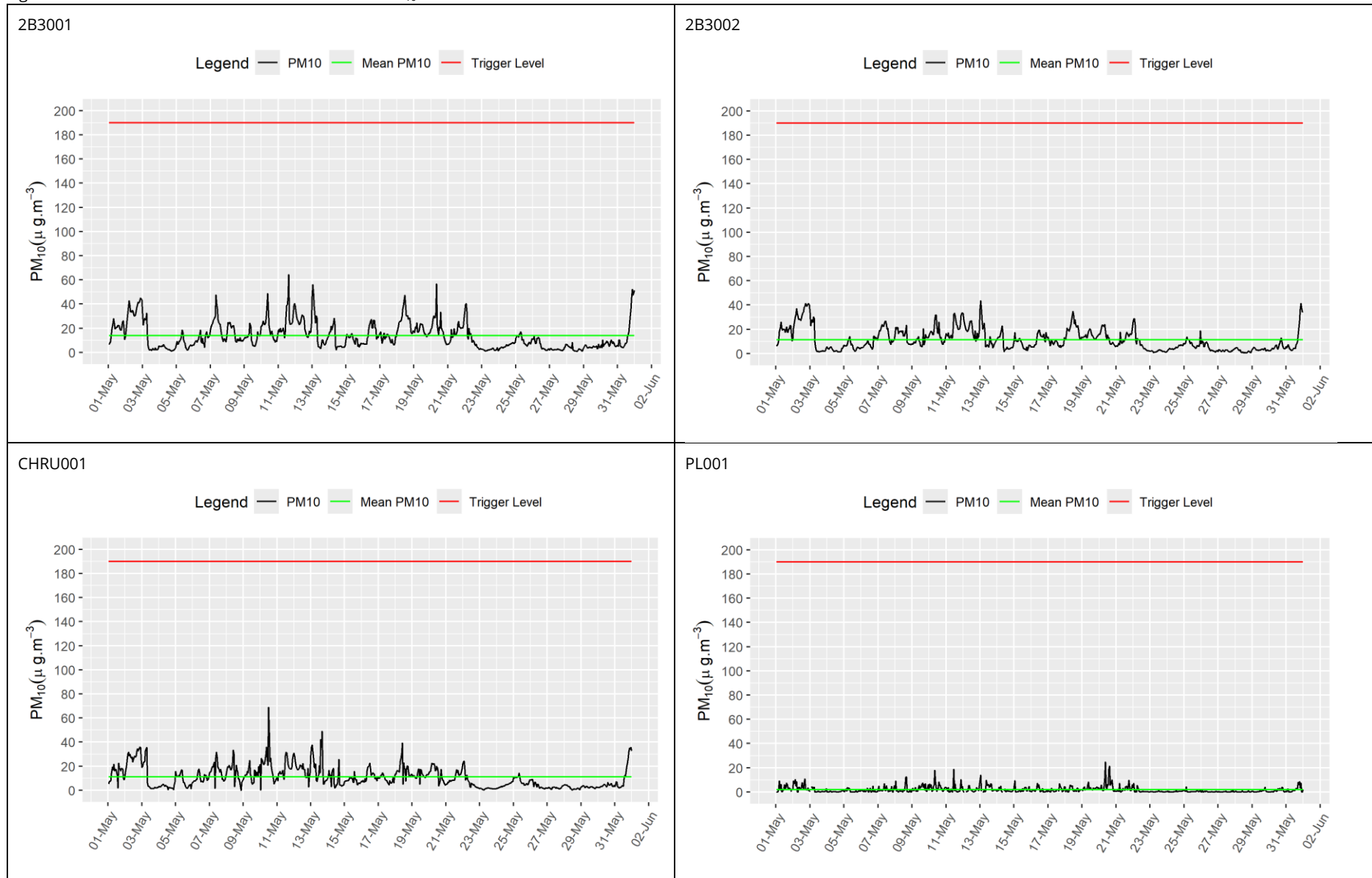
Table 1: Dust Monitoring Locations and Results

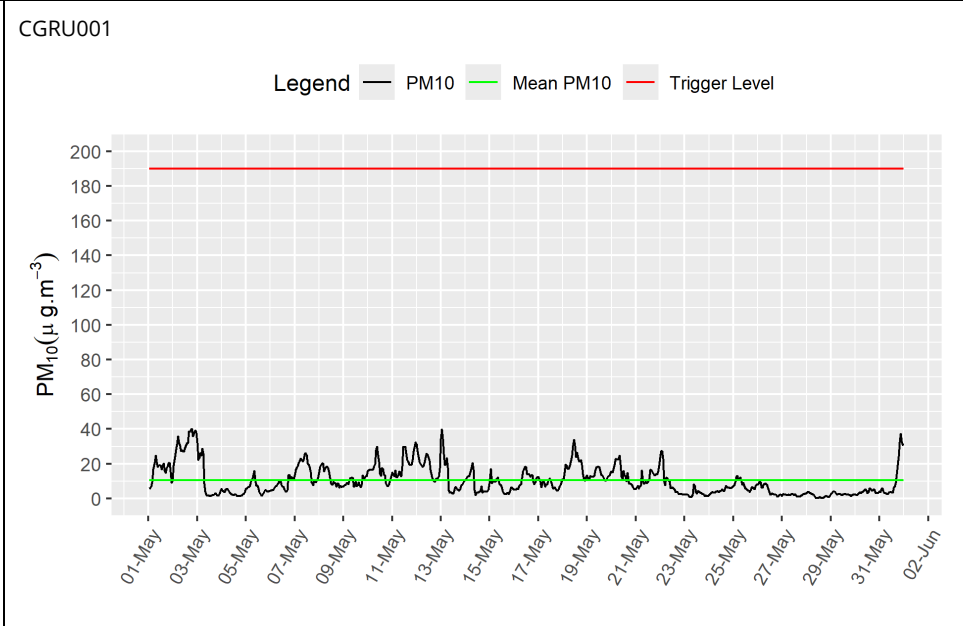
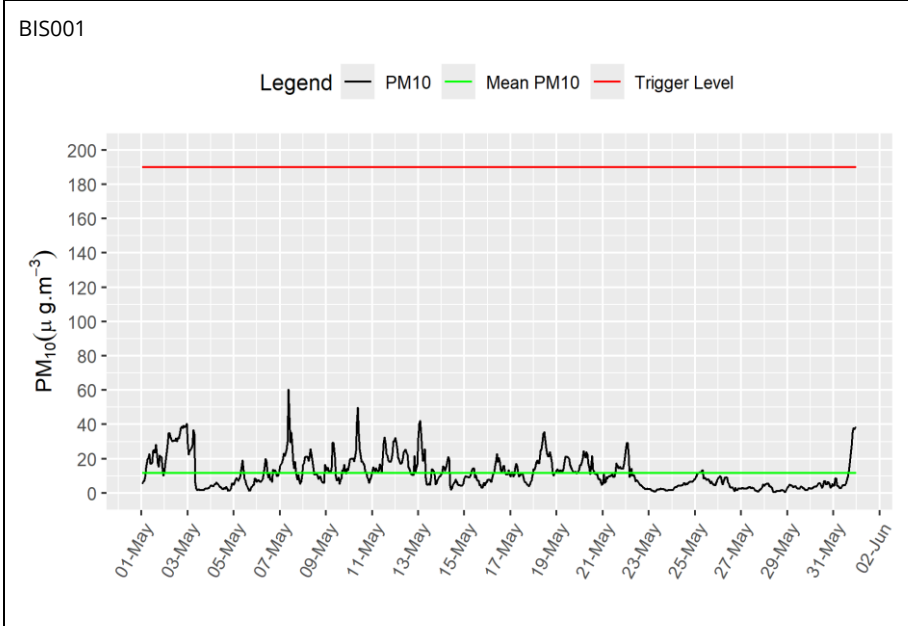
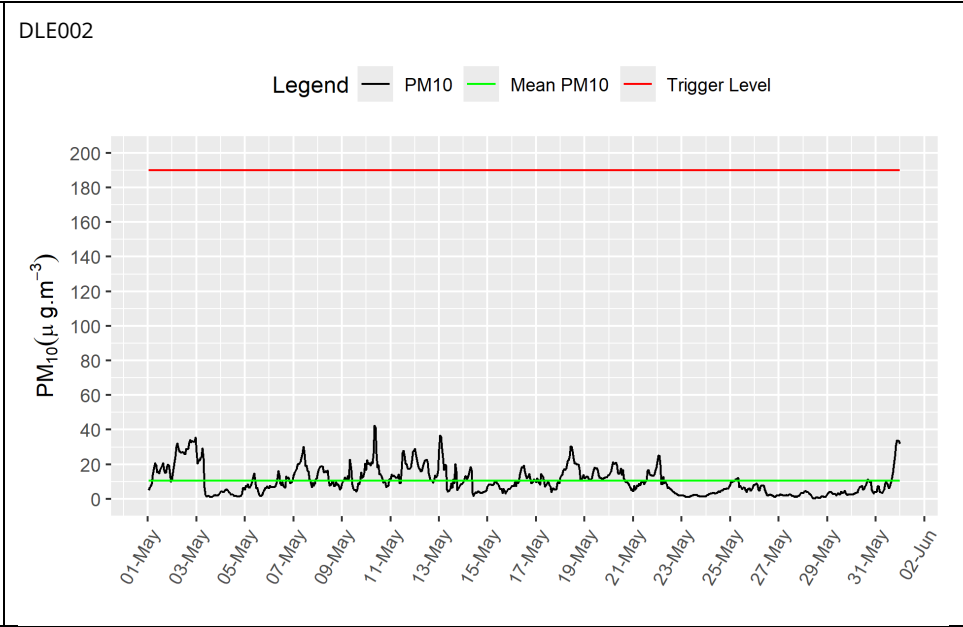
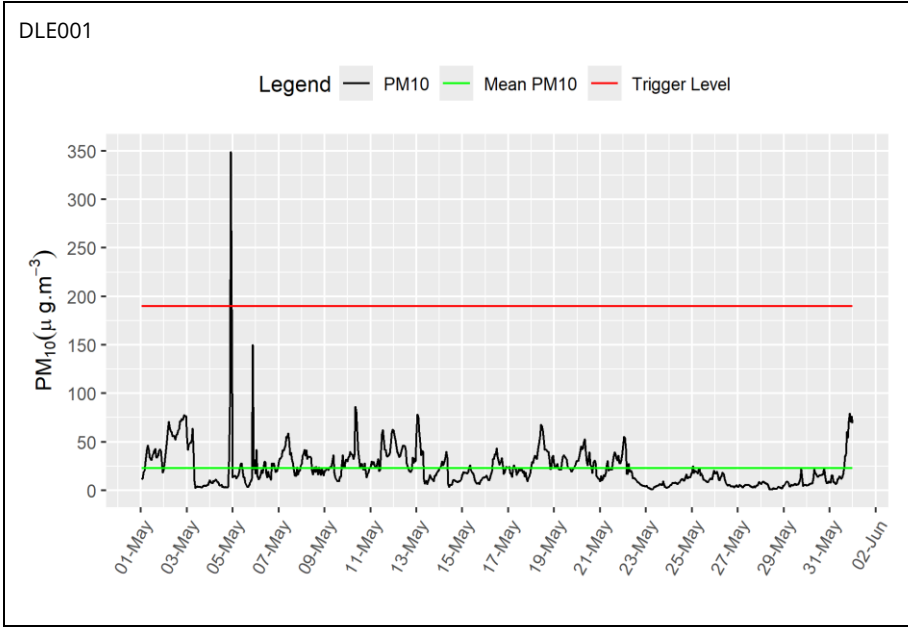
Monitoring site ID	Coordinates (X,Y)	Location description	Dust risk rating for site	Monitoring site active during period	Change to site since previous period report	Mean 1-hour PM ₁₀ concentration (µg/m ³)	Minimum 1-hour PM ₁₀ concentration (µg/m ³)	Maximum 1-hour PM ₁₀ concentration (µg/m ³)	Number of 1-hour periods exceeding trigger level of 190 µg/m ³	Data capture Month (%)
2B3001	422322, 280034	Sublot 2B3, at Marsh Farm	M	Yes	No	13.9	0.8	64.3	0	100.0
2B3002	424601, 277729	Sublot 2B3, at Cherry Tree Cottage	M	Yes	No	11.4	0.4	43.5	0	100.0
CHRU001	419300, 286793	Bluebell Drive, Coleshill Heath Road Underbridge	L	Yes	No	11.0	0.2	69.0	0	99.9
PL001	423436, 278557	Park Lane	M	Yes	No	1.9	0.1	24.7	0	94.9
DLE001	421035, 281818	Diddington Lane	M	Yes	No	23.1	0.8	348.7	1	100.0
DLE002	421139, 282222	Hampton Hill Farmhouse	M	Yes	No	10.5	0.2	42.4	0	100.0
BIS001	420284, 283503	Hollywell Brook	M	Yes	No	11.8	0.6	60.4	0	100.0
CGRU001	424454, 277483	Annora House	M	Yes	No	10.5	0.3	40.1	0	100.0
BBE001	421656, 281313	Patrick Farmhouse	M	Yes	No	10.0	0.3	44.8	0	100.0

Table 2: Summary of exceedances during period (May 2024)

Monitoring site ID	Period exceeding trigger level	Investigation	Outcomes / Resolution / Remedial measures implemented
DLE001	04/05/2024 21:00 – 21:59; 348.7 µg/m ³	Alert was recorded outside of current BBV working hours and so, the alert is not thought to be associated with HS2 construction works.	N/A

Figure 4: Construction dust 1-hour mean indicative PM₁₀ concentration for all dust monitors





BBE001

