

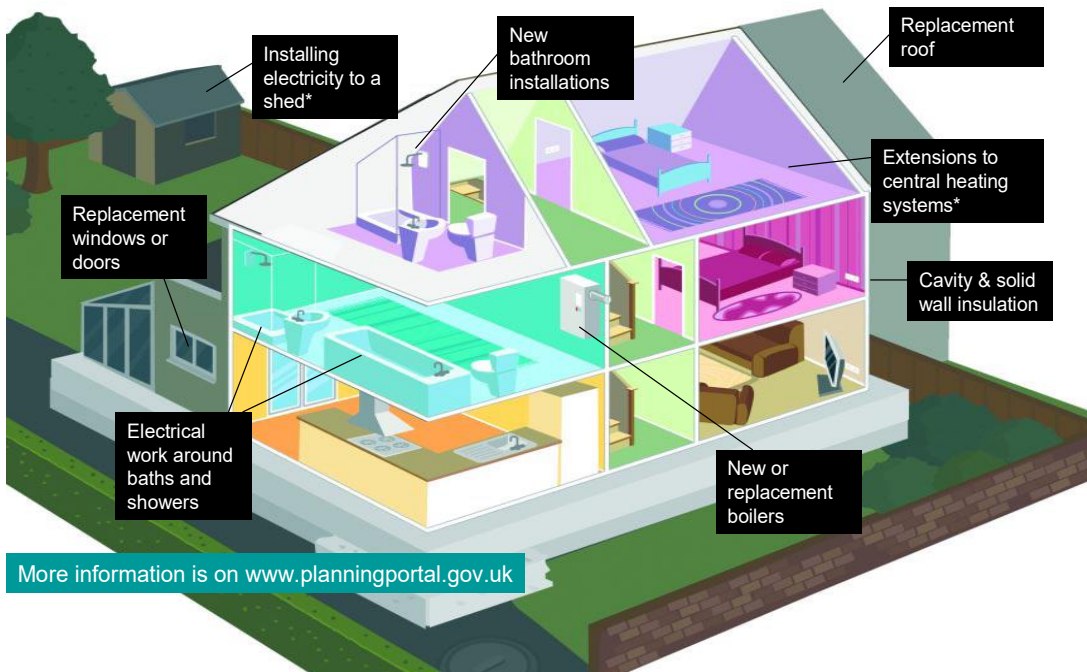


# Department for Communities and Local Government



The Building Regulations are designed to ensure new buildings meet health, safety, welfare, convenience and sustainability standards. They relate to the specifics of how a building should be constructed unlike planning permission which is about the principle of whether development should go ahead or not.

Many jobs in the home need to be notified to and approved as being compliant with Building Regulations by a Building Control Body, either your Local Authority Building Control or a private sector Approved Inspector, unless carried out by installers registered with a Competent Person Scheme who can self certify that their work is compliant. Some examples of notifiable work (not a complete list) are shown below. Those marked \* may not need



## What will happen if I do not comply with the Building Regulations?

- If you do not comply the work will not be legal. You could be prosecuted and could face unlimited fines.
- The work may not be safe, could cause health problems, injury or even death. It may also not meet energy efficiency standards.
- If work is found to be faulty your Local Authority could insist you put it right at your own expense.
- If the work has not been notified to a Building Control Body or carried out by a Competent Person Scheme registered installer the Local Authority will have no record that the work complies with Building Regulations. These records will be important when you come to sell your home as you may be asked to provide certificates of compliance with the Building Regulations.

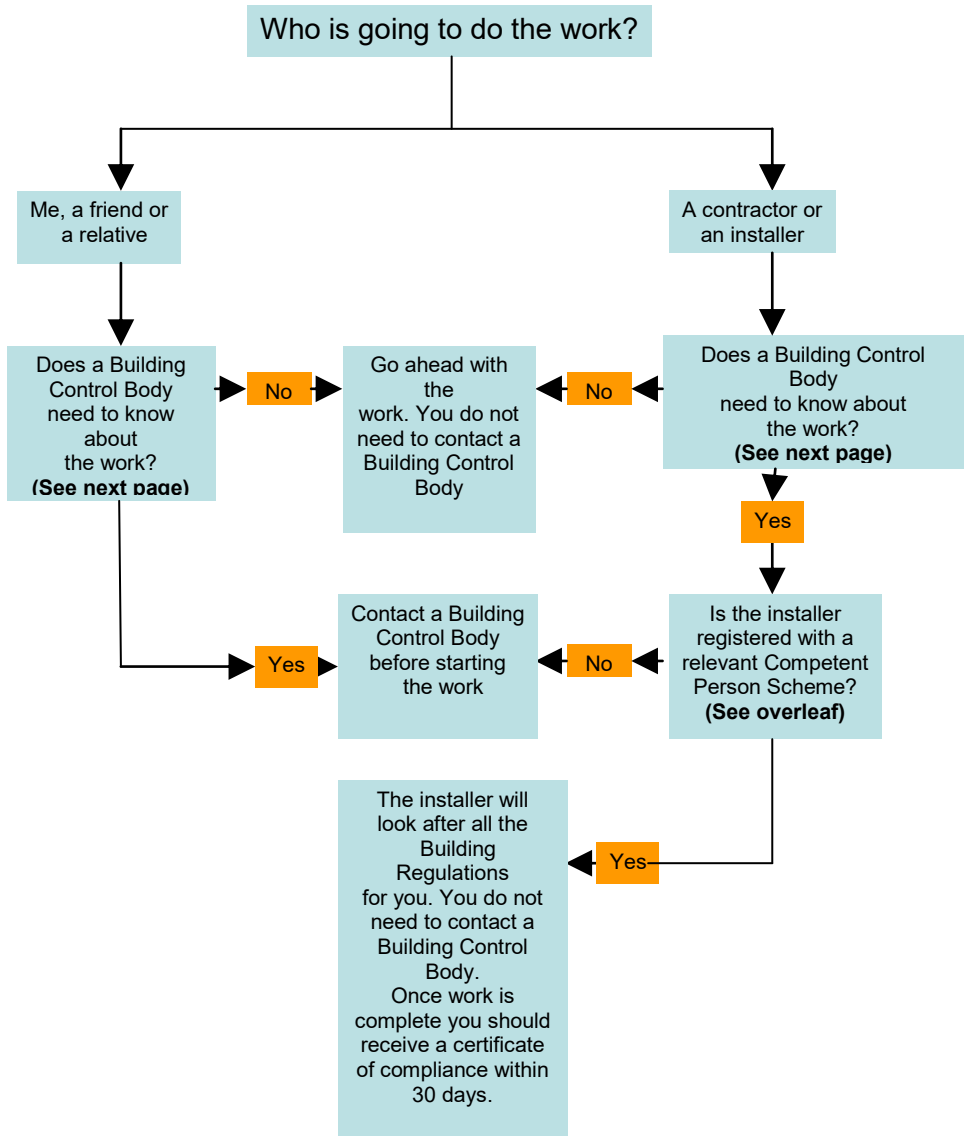
## Why should I use an installer who is registered with a Competent Person Scheme?

- An installer registered with a Competent Person Scheme is qualified to carry out specific types of work in accordance with Building Regulations and should both notify the local authority of the work and issue you a certificate of compliance with Building Regulations either directly or through their scheme operator. If you do not receive a certificate within 30 days of completion contact the Competent Person Scheme operator that your installer is registered with and they may be able to help you resolve this.
- If you do not use an installer registered with a Competent Person Scheme then you will have to submit a building notice or full plans application and pay a fee to have a Building Control Body come and inspect the work you have carried out.
- You will be given financial protection to cover the event of non-compliant work being found where the installation company has gone out of business

## How can I find an installer registered with a Competent Person Scheme in my area or check that my chosen installer is with a scheme?

Visit [www.competentperson.co.uk](http://www.competentperson.co.uk) or for electrical work you can visit [www.electricalcompetentperson.co.uk](http://www.electricalcompetentperson.co.uk) and enter your postcode or the name of the installer in the relevant search box. Competent Person Scheme operator contact details and the types of work each operator covers are at the end of this booklet.

# How to meet the requirements of the Building Regulations



**Please see below for examples of work that you do or do not need to notify to a Building Control Body before starting. Please note that these lists are not complete and there will be other work not listed here that you will need to notify. If you are in any doubt you should contact a Building Control Body for advice.**

**Some examples of work that you **DO** need to tell a Building Control Body about unless you use an installer who is registered with a Competent Person Scheme.**

- installation of a new or replacement heating system or boiler, regardless of fuel type
- installation of a new or replacement oil tank
- installation of a bathroom if new plumbing is installed or existing plumbing is altered
- installation of a fixed air conditioning system
- addition of a radiator to an existing heating system (may not need notifying in some circumstances)
- installation of a new or replacement fuse box (or consumer unit) or any new electrical circuit connected to the fuse box, and alterations to electrical installations around a bath or shower
- replacement of window and door units
- replacement of roof coverings on pitched and flat roofs

**Some examples of work that you **DO NOT** need to tell a Building Control Body about but you can still use a Competent Person Scheme registered installer.**

- most repairs, replacements and maintenance work (except replacements of combustion appliances, oil tanks, electrical fuse boxes or glazing units, which do need to be notified)
- additional power points or lighting points or any other alterations to existing electrical circuits (except around baths and showers)
- like-for-like replacements of baths, toilets, basins or sinks

**Below is a list of the types of work covered by Competent Person Schemes. The scheme contact details are overleaf.**

Installation of cavity wall insulation: **Blue Flame, Certass, Certsure, CIGA, NAPIT, STROMA**

Installation of solid wall insulation: **BBA** (including hybrid), **Blue Flame** (including hybrid), **CERTASS, Certsure** (including hybrid), **NAPIT** (including hybrid), **STROMA**

Installation of gas appliances: **Gas Safe Register**

Installation or replacement of hot water and heating systems: **APHC, Benchmark, BESCA, Blue Flame, Certsure, Gas Safe Register, HETAS, NAPIT, OFTEC, and STROMA**

Installation or replacement of oil-fired boilers and storage tanks: **APHC, Benchmark, BESCA, Blue Flame, Certsure, NAPIT, OFTEC, STROMA**

Installation or replacement of solid fuel burners: **APHC, BESCA, Certsure, HETAS, NAPIT, OFTEC, STROMA**

Installation of fixed air conditioning or mechanical ventilation systems in dwellings: **BESCA, Blue Flame, Certsure, NAPIT, STROMA**

Any electrical installation work in dwellings: **Benchmark, BESCA, Blue Flame, BSI, Certsure, NAPIT, OFTEC, STROMA**

Electrical installation work only in association with other work in dwellings (e.g. kitchen installations, boiler installations): **APHC, Benchmark, BESCA, Blue Flame, Certsure, NAPIT, STROMA**

Replacement windows, doors, roof windows, or roof lights in dwellings: **ASSURE, Blue Flame, BM TRADA, BSI, CERTASS, Certsure, FENSA, NAPIT, STROMA**

Installation of plumbing and water supply systems and bathrooms and sanitary ware: **APHC, Benchmark, BESCA, Certsure, HETAS, NAPIT, STROMA** (except for wholesome cold water supplies)

Replacement of roof coverings on pitched and flat roofs (not including solar panels): **CompetentRoofer, NAPIT**

Installation of microgeneration or renewable technologies: **APHC, Benchmark, BESCA, BRE, Certsure, HETAS, NAPIT, OFTEC, STROMA**

These schemes have been listed alphabetically. This does not reflect the size of the scheme or whether the scheme specialises in dealing with a particular type of work. Visit [www.competentperson.co.uk](http://www.competentperson.co.uk) to see if there are members in your local area who undertake the type of work that you are interested in. If you want electrical work done then you can also visit [www.electricalcompetentperson.co.uk](http://www.electricalcompetentperson.co.uk) to search for members.

**APHC**

[www.aphc.co.uk](http://www.aphc.co.uk)  
0121 711 5030

**Benchmark Certification**

[www.benchmark-cert.co.uk](http://www.benchmark-cert.co.uk)  
0238 0517 069

**BESCA**

[www.besca.org.uk](http://www.besca.org.uk)  
0800 652 5533

**Blue Flame**

[www.blueflamecertification.com](http://www.blueflamecertification.com)  
0845 194 9031

**BM Trada**

[www.bmtrada.com](http://www.bmtrada.com)  
01494 569 700

**British Board of Agrément (BBA)**

[www.bbacerts.co.uk](http://www.bbacerts.co.uk)  
01923 665 386

**BSI**

[www.kitemark.com](http://www.kitemark.com)  
0845 0809 000

**Certsure LLP (trading as  
ELECSA)**

[www.elecsa.co.uk](http://www.elecsa.co.uk)  
0333 321 8220

**Certsure LLP (trading  
as NICEIC)**

[www.niceic.com](http://www.niceic.com)  
0870 013 0382

**Competent Roofer (NRFC)**

[www.competentroofer.co.uk](http://www.competentroofer.co.uk)  
020 7638 7663

**CERTASS**

[www.certass.co.uk](http://www.certass.co.uk)  
08450948 025

**CIGA**

[www.cwisc.org](http://www.cwisc.org)  
01525 853300

**FENSA**

[www.fensa.co.uk](http://www.fensa.co.uk)  
020 7645 3700

**Gas Safe Register**

[www.gassaferegister.co.uk](http://www.gassaferegister.co.uk)  
0800 408 5500

**HETAS**

[www.hetas.co.uk](http://www.hetas.co.uk)  
01684 278170

**NAPIT**

[www.napit.org.uk](http://www.napit.org.uk)  
0345 5430330

**Network VEKA (ASSURE)**

[www.networkveka.co.uk](http://www.networkveka.co.uk)  
0800 80 00 80

**OFTEC**

[www.oftec.org.uk](http://www.oftec.org.uk)  
0845 658 5080

**STROMA**

[www.stroma.com](http://www.stroma.com)  
0845 621 1111

Some registered installers also carry out work under the Green Deal, are members of the TrustMark scheme or the Microgeneration Certification Scheme all of which give further consumer protection. For details, visit: <https://www.gov.uk/green-deal-energy-saving-measures> [www.trustmark.org.uk](http://www.trustmark.org.uk) or [www.microgenerationcertification.org](http://www.microgenerationcertification.org)

If you wish to have your building control undertaken by your Local Authority Building Control Body contact your Local Authority. If you wish to have your building control undertaken by an Approved Inspector you can find a register of them at this weblink: <http://www.cic.org.uk/services/register.php>