

Passport Photo Form

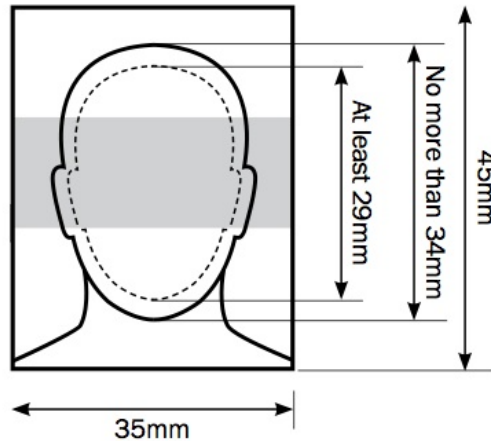
Please follow the below instructions carefully

Please provide a passport style photograph as per below rules Section 1 and attach the photograph in jpeg format and attach to your application email.

You can if you wish, send a physical passport photograph by post with your application, and the instructions for this are in Section 2

Section 1 - Rules for digital photo

The image of you - from the crown of your head to your chin - must be between 29mm and 34mm high.



The quality of your digital photo

Your photo must be:

- clear and in focus
- in colour
- unaltered by computer software
- at least 600 pixels wide and 750 pixels tall
- at least 50KB and no more than 5MB

What your digital photo must show

The digital photo must:

- contain no other objects or people
- be taken against a plain light-coloured background
- be in clear contrast to the background
- not have 'red eye'

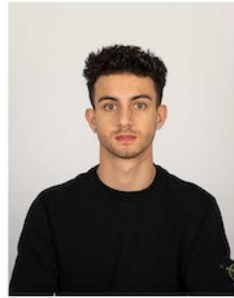
If you're using a photo taken on your own device, include your head, shoulders and upper body. Do not crop your photo - it will be done for you.

In your photo you must:

- be facing forwards and looking straight at the camera
- have a plain expression and your mouth closed
- have your eyes open and visible

- not have hair in front of your eyes
- not have a head covering (unless it's for religious or medical reasons)
- not have anything covering your face
- not have any shadows on your face or behind you

Do not wear glasses in your photo unless you have to do so. If you must wear glasses, they cannot be sunglasses or tinted glasses, and you must make sure your eyes are not covered by the frames or any glare, reflection or shadow.



✓ Plain light-coloured background



✗ Textured background



✗ Object in background



✓ Even lighting and no shadow



✗ Shadow on face



✗ Shadow behind head



✓ Religious headwear



✗ Fashion hair accessories



✗ Fashion headwear



✓ Eyes fully visible



✗ Glasses covering eyes



✗ Hair covering eyes

Section 2 - Requirements for a physical printed photo

You need to provide 1 photo.

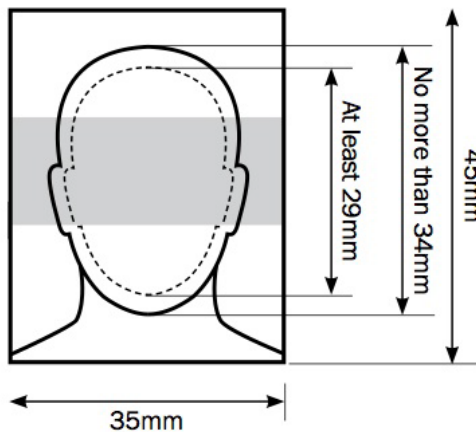
It must:

- measure 45 millimetres (mm) high by 35mm wide (the standard size used in photo booths in the UK)

If you use a photo booth outside the UK, check it can give you photos that measure 45mm high by 35mm wide.

The size of your image

The image of you - from the crown of your head to your chin - must be between 29mm and 34mm high.



The quality of your photo

Your photo must be:

- clear and in focus
- unaltered by computer software

What your printed photos must show

Your photos must:

- be a close-up of your full head and upper shoulders
- contain no other objects or people
- be taken against a plain cream or light grey background
- be in clear contrast to the background
- not have 'red eye'

In your photo, you must:

- be facing forwards and looking straight at the camera
- have a plain expression and your mouth closed
- have your eyes open and visible
- not have hair in front of your eyes
- not have a head covering (unless it's for religious or medical reasons)
- not have anything covering your face
- not have any shadows on your face or behind you

Do not wear glasses in your photo unless you have to do so. If you must wear glasses, they cannot be sunglasses or tinted glasses, and you must make sure your eyes are not covered by the frames or any glare, reflection or shadow.

