



UK Health
Security
Agency

GP in Hours Syndromic Surveillance System Bulletin (England)

2024 Week 26

Key messages

Data reported to: 28 June 2024

During week 26, GP consultation rates for allergic rhinitis peaked on Monday 22 June, however rates were lower during the latter part of the week suggesting an overall peak in seasonal activity. There was also an increase in consultations for 'heat or sunstroke' in line with the Yellow Heat-Health Alert, however rates decreased towards the end of the week. COVID-19-like consultation rates continued to increase during week 26, across all age groups.

Syndromic indicators at a glance

Table 1: The current trend (based on previous weeks, not only the current week) and the level (compared to the expected baseline), of each indicator included in this bulletin.

Indicator	Trend ¹	Level
COVID-19-like (Figure 1)	Increasing	No baseline
Upper respiratory tract infections (Figure 2)	Decreasing	Similar to baseline
Influenza-like illness (Figure 3)	Decreasing	Above baseline
Pharyngitis (Figure 4)	No trend	Similar to baseline
Scarlet fever (Figure 5)	No trend	Above baseline
Lower respiratory tract infections (Figure 6)	Decreasing	Above baseline
Pneumonia (Figure 7)	Decreasing	Above baseline
Bronchiolitis (Figure 8)	No trend	Similar to baseline
Acute bronchitis (Figure 9)	No trend	Above baseline
Acute presenting asthma (Figure 10)	No trend	Similar to baseline
Gastroenteritis (Figure 11)	Decreasing	Above baseline
Diarrhoea (Figure 12)	No trend	Above baseline
Vomiting (Figure 13)	Decreasing	Above baseline
Measles (Figure 14)	No trend	Above baseline
Mumps (Figure 15)	No trend	Below baseline
Whooping cough (Figure 16)	Decreasing	Above baseline
Cellulitis (Figure 17)	Increasing	Similar to baseline
Chickenpox (Figure 18)	No trend	Below baseline
Herpes zoster (Figure 19)	No trend	Below baseline
Impetigo (Figure 20)	Decreasing	Below baseline
Conjunctivitis (Figure 21)	No trend	Below baseline
Allergic rhinitis (Figure 22)	No trend	Above baseline
Heat or sunstroke (Figure 23)	Increasing	Above baseline
Insect bites (Figure 24)	Increasing	Similar to baseline

¹ trend reports on the trend seen over most recent and earlier weeks

System coverage

Table 2: The number of GP practices, and number of registered patients included in surveillance during the most recent week.

Year	Week	GP practices reporting ¹	GP practice type	Registered patients ¹
2024	26	1845	Combined	19 million
2024	26	647	TPP	7 million
2024	26	1198	Orchid	12 million

¹ based on the average number of practices and registered patient population in the reporting week (Monday-Friday).

Contents

Key messages	2
Syndromic indicators at a glance.....	2
System coverage.....	3
Contents.....	4
About this syndromic surveillance system.....	6
Respiratory conditions.....	7
COVID-19-like	7
Upper respiratory tract infections.....	9
Influenza-like illness	11
Pharyngitis.....	13
Scarlet fever	15
Lower respiratory tract infections.....	17
Pneumonia	19
Bronchiolitis	21
Acute bronchitis.....	23
Acute presenting asthma.....	25
Gastrointestinal conditions.....	27
Gastroenteritis	27
Diarrhoea.....	29
Vomiting	31
Vaccine preventable conditions	33
Measles.....	33
Mumps.....	34
Whooping cough	36
Skin conditions.....	38
Cellulitis.....	38
Chickenpox.....	40
Herpes zoster	42
Impetigo.....	44

Seasonal environmental conditions	46
Conjunctivitis	47
Allergic rhinitis	49
Heat or sunstroke	51
Insect bites	53
Notes and caveats	55
COVID-19 syndromic surveillance.....	56
Acknowledgements.....	57
About the UK Health Security Agency.....	58

About this syndromic surveillance system

This bulletin presents data from the UK Health Security Agency (UKHSA) GP in hours Syndromic Surveillance System.

Syndromic surveillance can be used to:

- assess current trends
- assess current trends and levels compared to historical baselines
- compare trends between age groups/areas

Syndromic surveillance should not be used to:

- estimate total burden or number of 'cases' of a condition (see **Notes and caveats**)
- compare levels between age groups/areas

Fully anonymised, daily GP in hours data from two sources, TPP and ORCHID (Oxford and Royal College of General Practitioners Clinical Informatics Digital Hub), are analysed and reported here, to identify and describe trends for a variety of syndromic indicators:

- syndromic indicators include groupings such as upper respiratory tract infections, acute presenting asthma and gastroenteritis
- syndromic indicators are based on:
 - diagnoses recorded during GP in hours patient consultations
 - diagnoses are based on signs/symptoms and may not be laboratory confirmed
- **Key messages** describes any notable trends nationally (England), by age group and/or by geographical area (based on UKHSA Regions)
- the full list of syndromic indicators reported here, along with their current level and trend, are summarised in **Table 1**
- charts are provided for each syndromic indicator, on a national basis, by age group and by geographical area (UKHSA Region). Each chart includes a year of data with:
 - 7-day moving averages (adjusted for weekends and bank holidays) to aid in the identification of trend
 - statistical baselines (where available) to aid in the assessment of level compared to historical expectations
 - denominators vary for individual indicators, and are provided in **Table 2**

For further information please see the **Notes and caveats** section.

Previous weekly bulletins from this system are available [here](#).

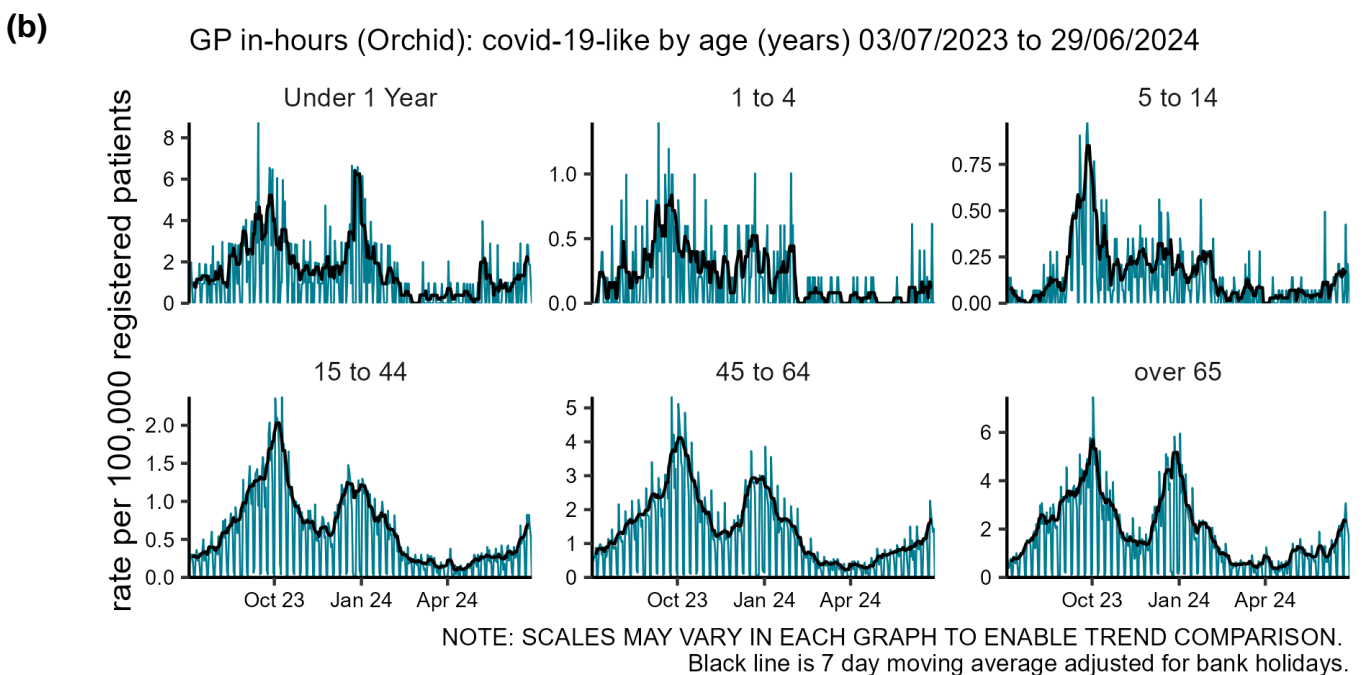
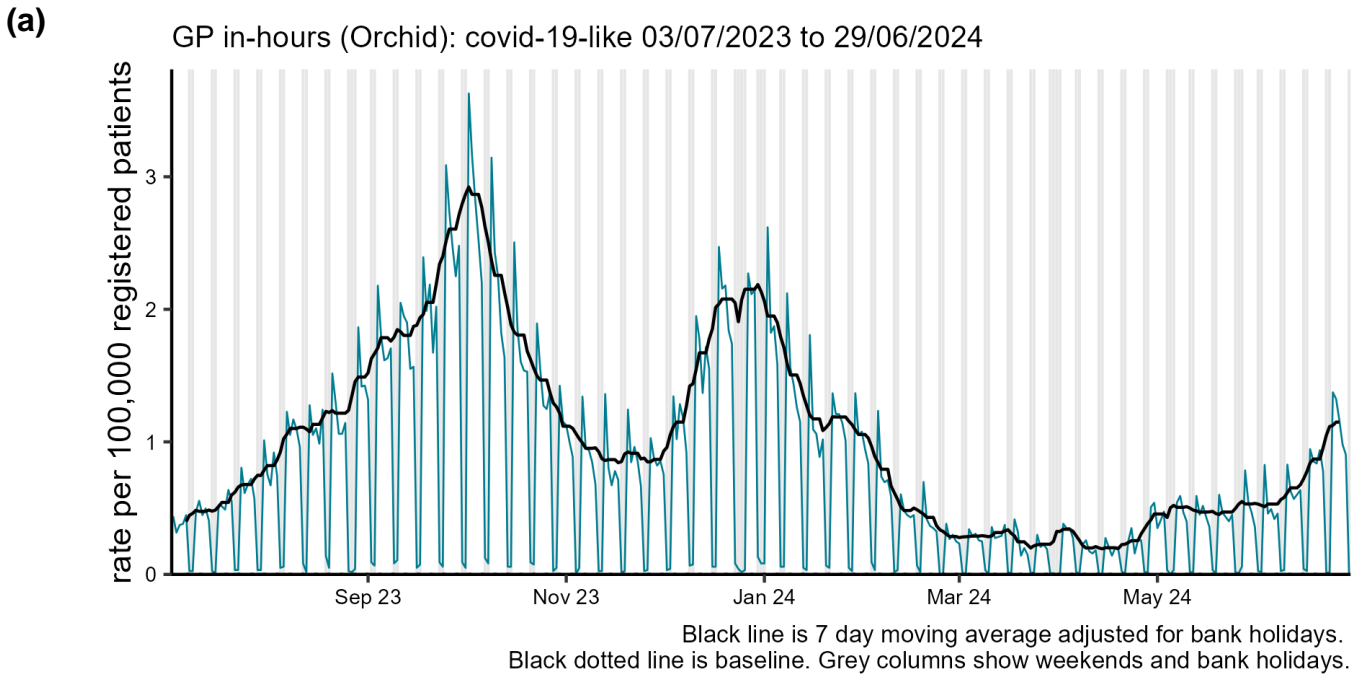
Data quality issues of note this week

The acute presenting asthma indicator presented in this bulletin has been temporarily restricted to a single data provider due to a data quality issue.

Respiratory conditions

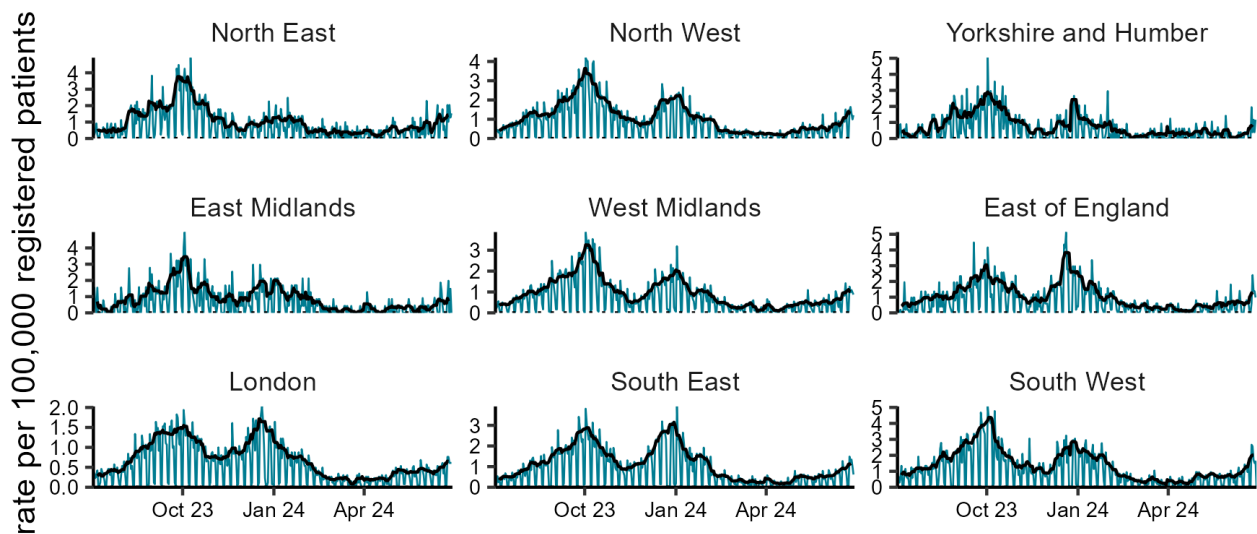
COVID-19-like

Figure 1: Daily incidence rate per 100,000 population (and 7-day moving average adjusted for bank holidays) for COVID-19-like GP in hours consultations, England (a) nationally, (b) by age and (c) by UKHSA Region.



(c)

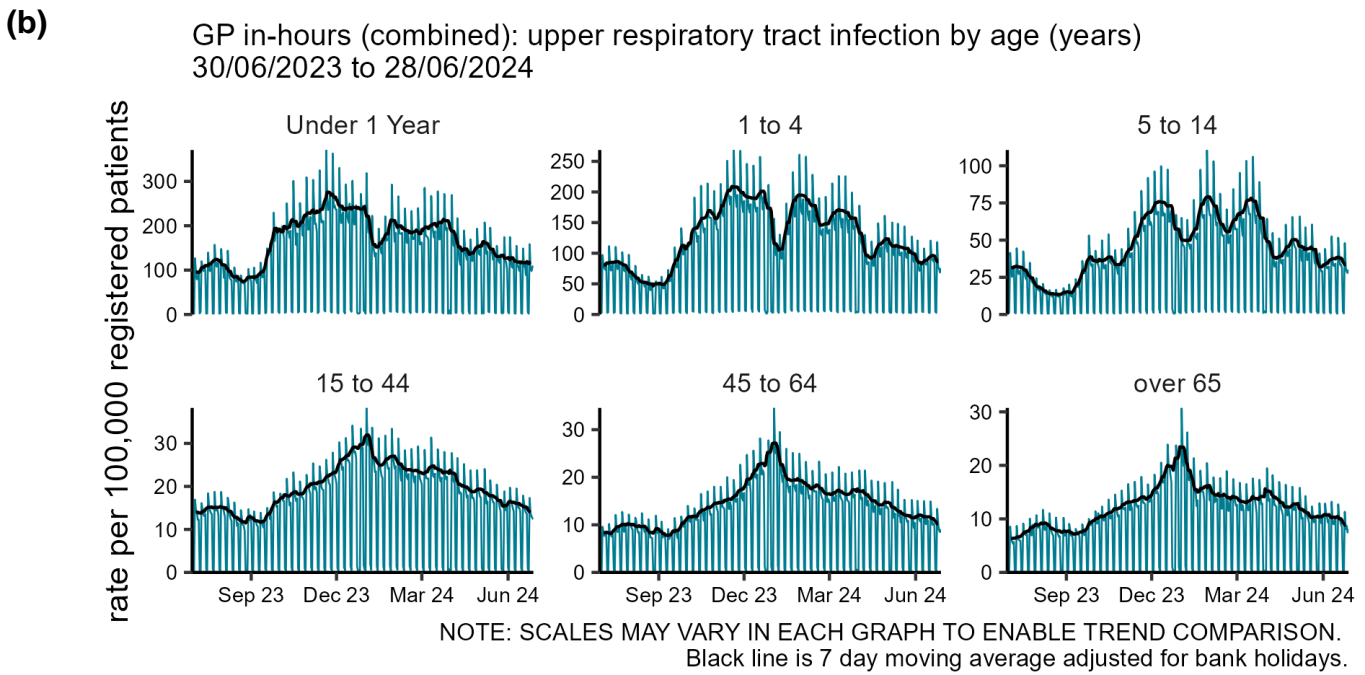
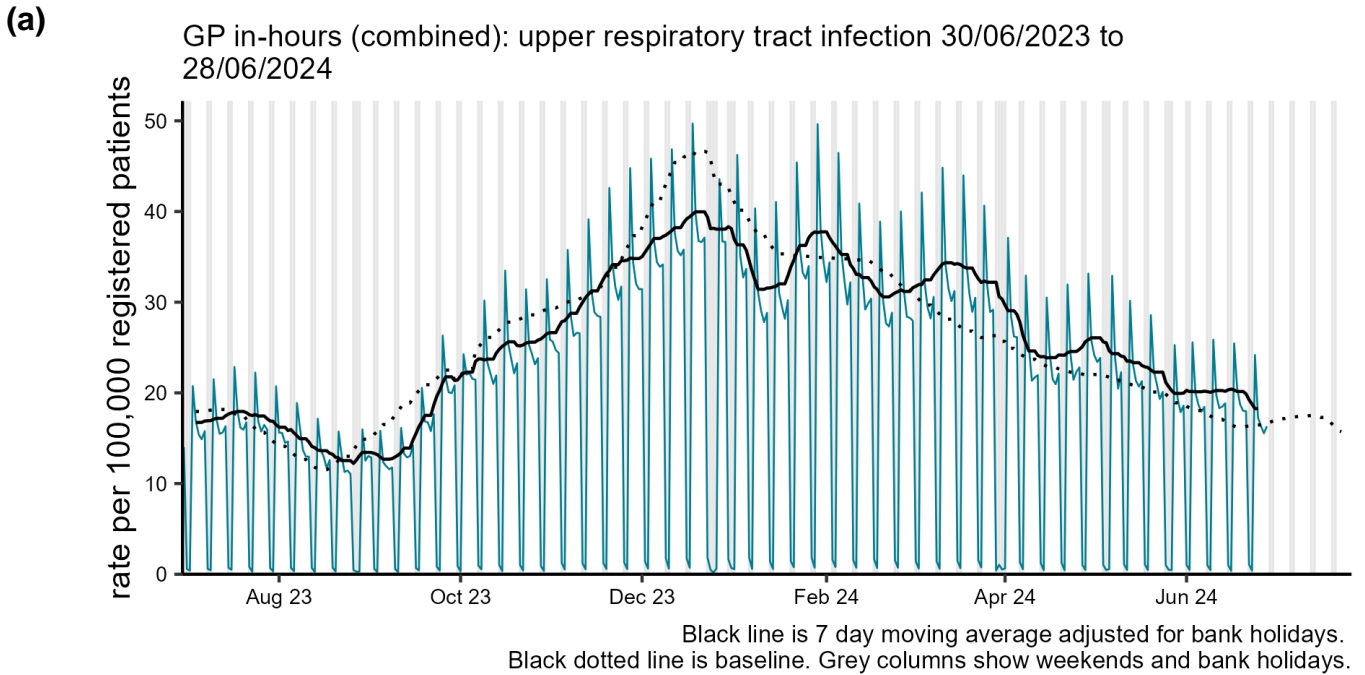
GP in-hours (Orchid): covid-19-like by UKHSA region 03/07/2023 to 29/06/2024



NOTE: SCALES MAY VARY IN EACH GRAPH TO ENABLE TREND COMPARISON.
Black line is 7 day moving average adjusted for bank holidays.
Black dotted line is baseline.

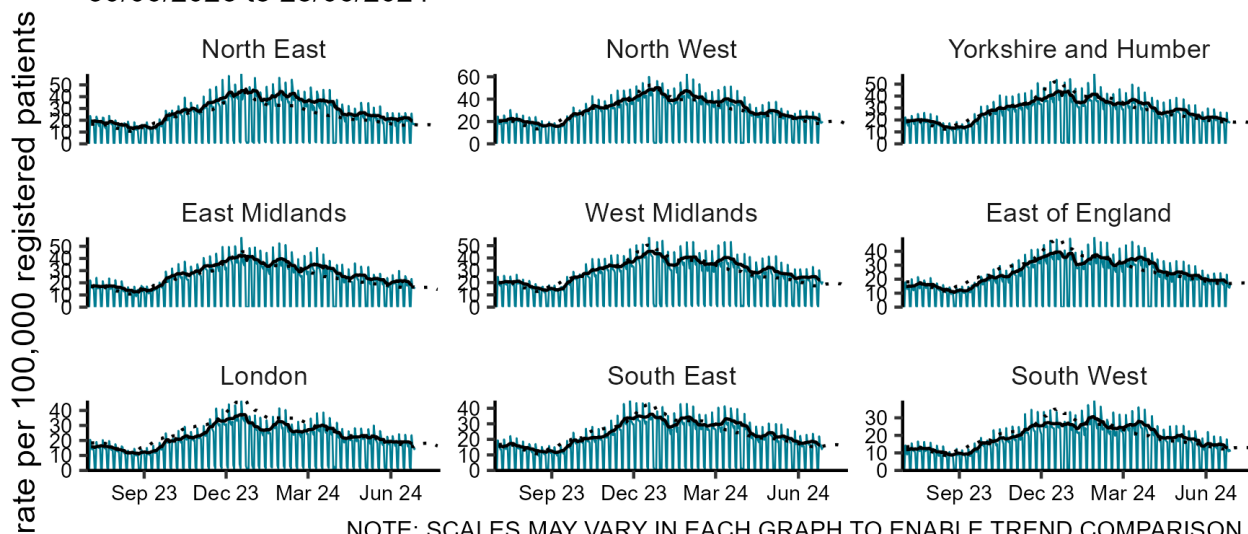
Upper respiratory tract infections

Figure 2: Daily incidence rate per 100,000 population (and 7-day moving average adjusted for bank holidays) for upper respiratory tract infections GP in hours consultations, England (a) nationally, (b) by age and (c) by UKHSA Region.



(c)

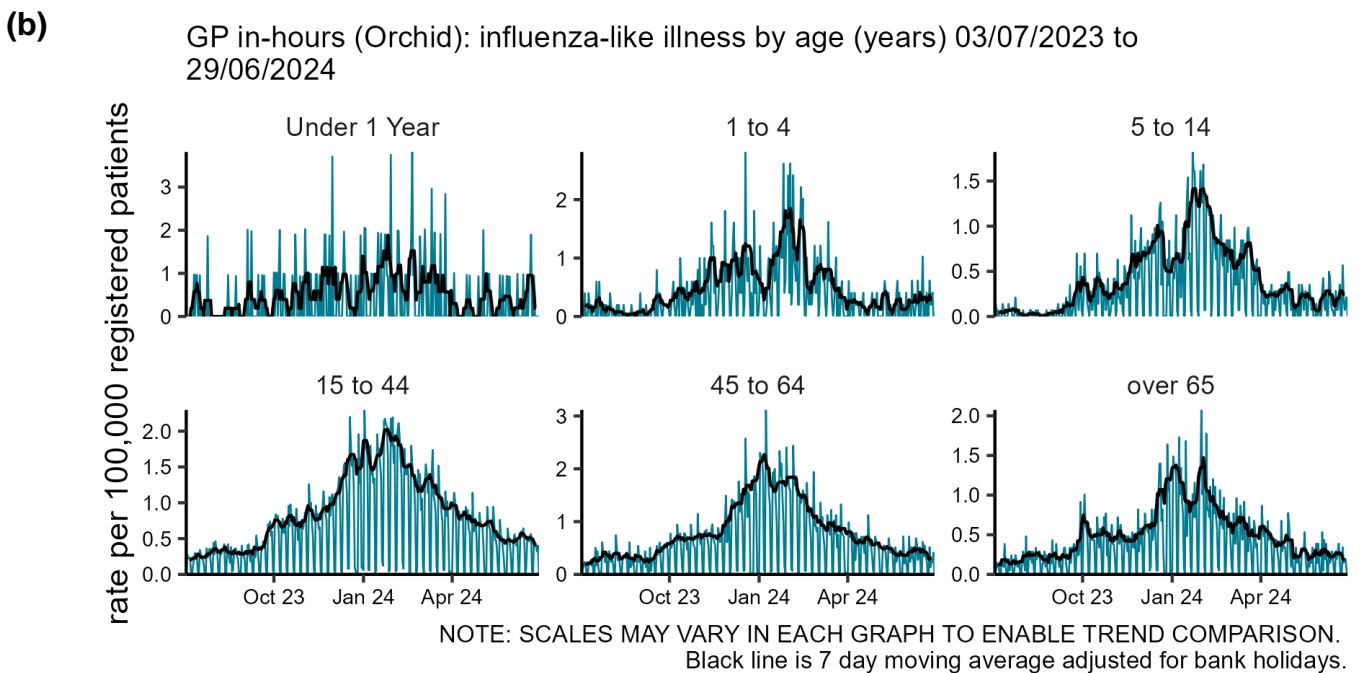
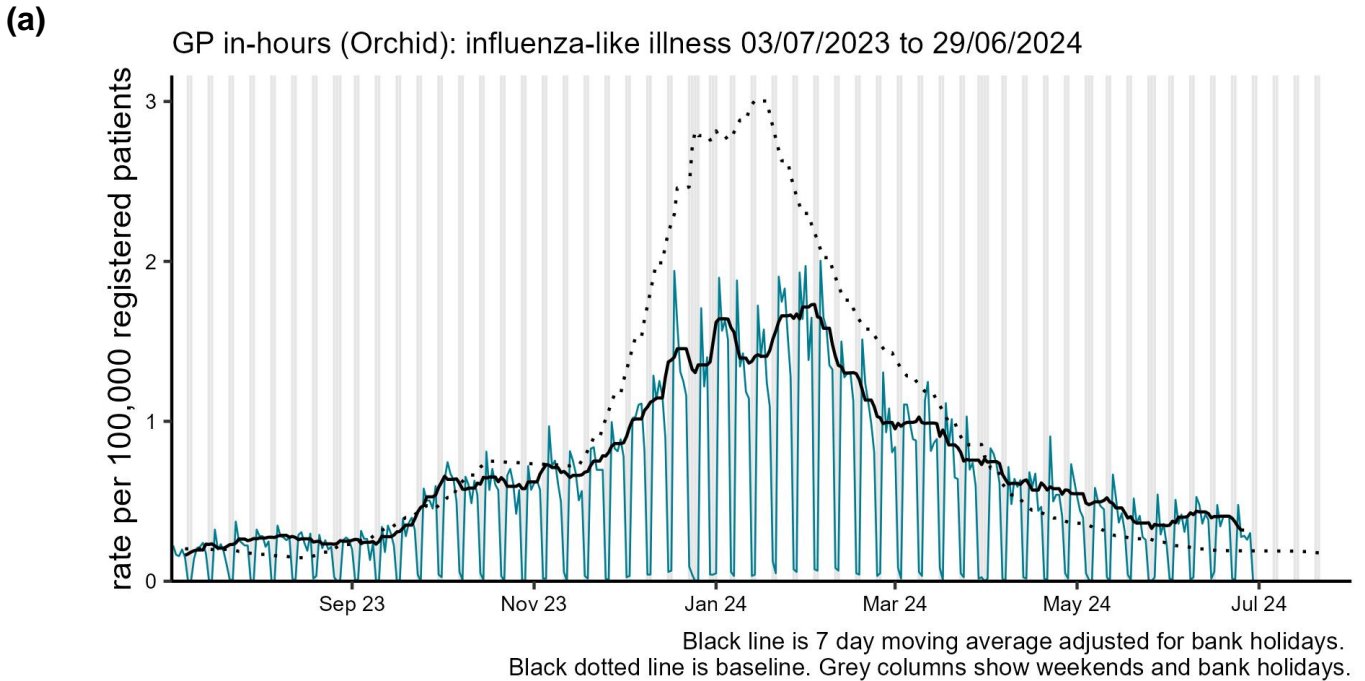
GP in-hours (combined): upper respiratory tract infection by UKHSA region
30/06/2023 to 28/06/2024



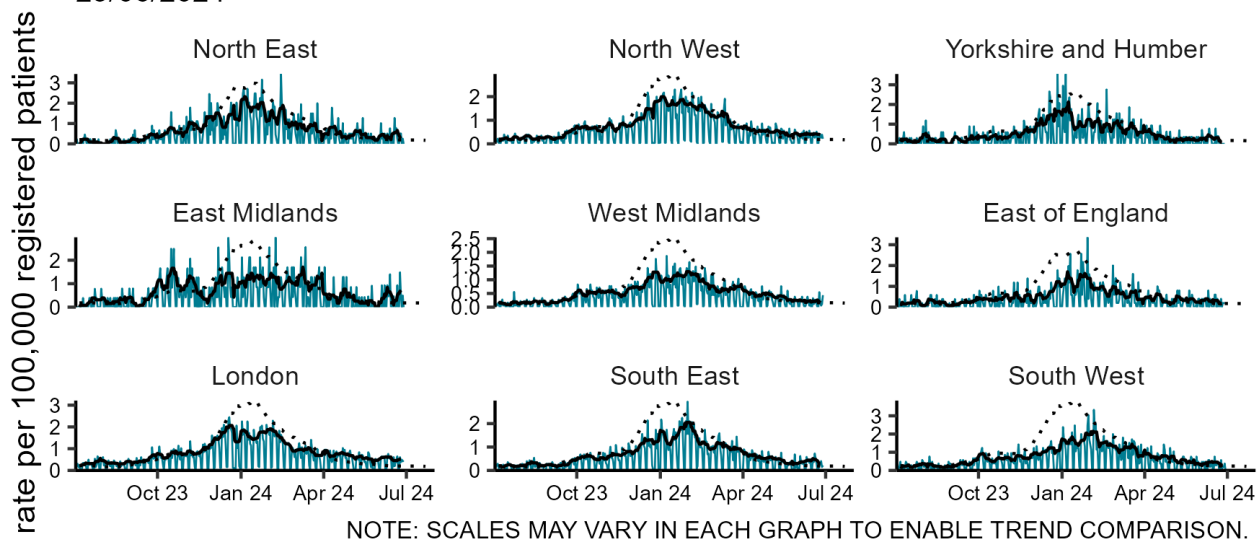
NOTE: SCALES MAY VARY IN EACH GRAPH TO ENABLE TREND COMPARISON.
Black line is 7 day moving average adjusted for bank holidays.
Black dotted line is baseline.

Influenza-like illness

Figure 3: Daily incidence rate per 100,000 population (and 7-day moving average adjusted for bank holidays) for influenza-like illness GP in hours consultations, England (a) nationally, (b) by age and (c) by UKHSA Region.



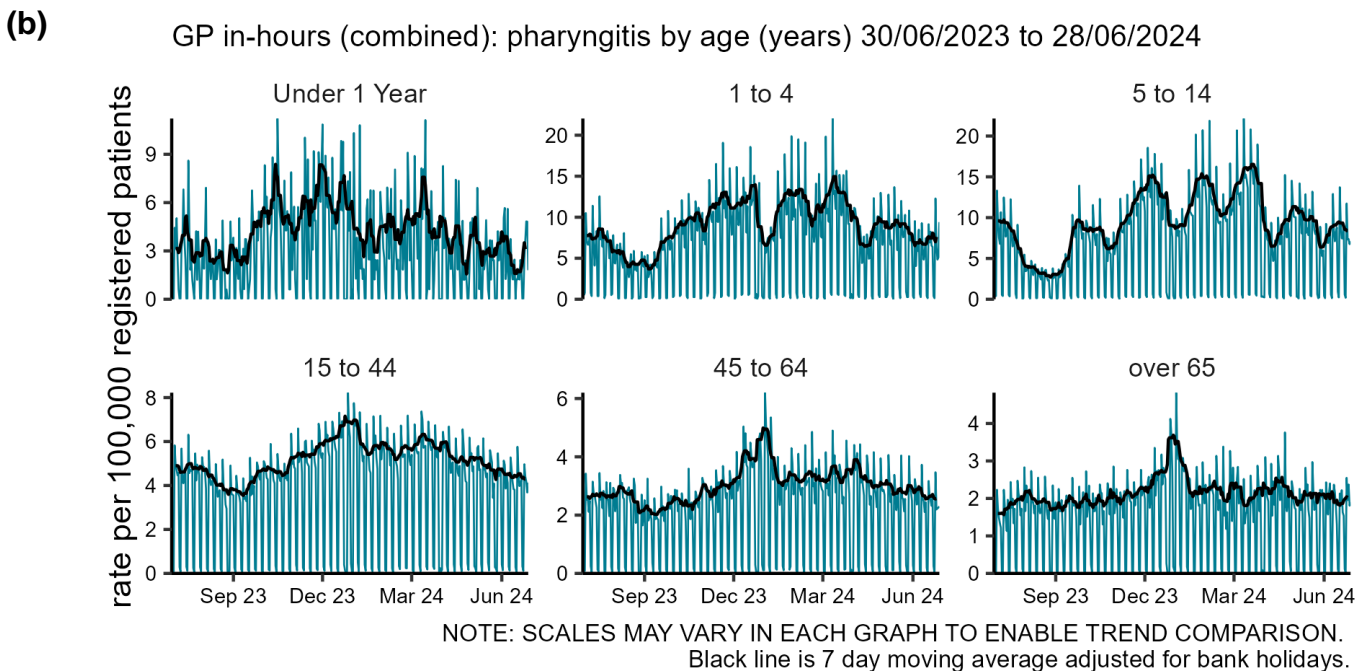
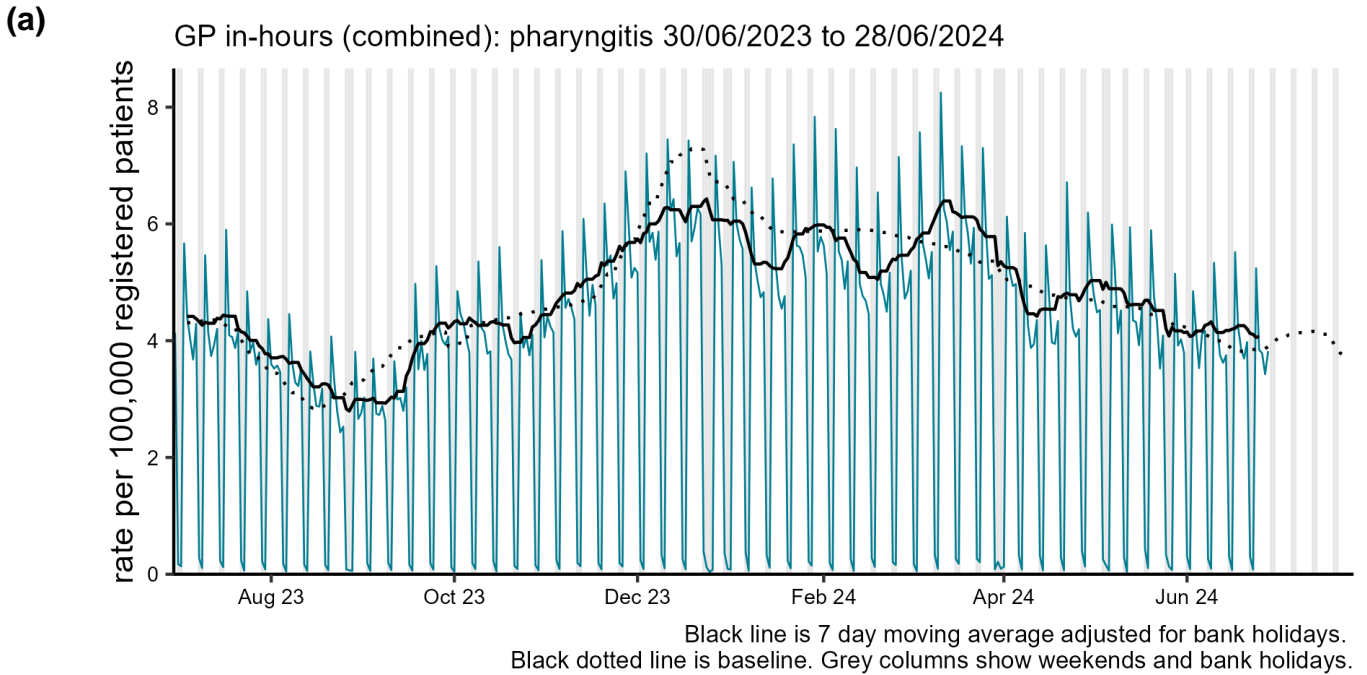
(c) GP in-hours (Orchid): influenza-like illness by UKHSA region 03/07/2023 to 29/06/2024



NOTE: SCALES MAY VARY IN EACH GRAPH TO ENABLE TREND COMPARISON.
Black line is 7 day moving average adjusted for bank holidays.
Black dotted line is baseline.

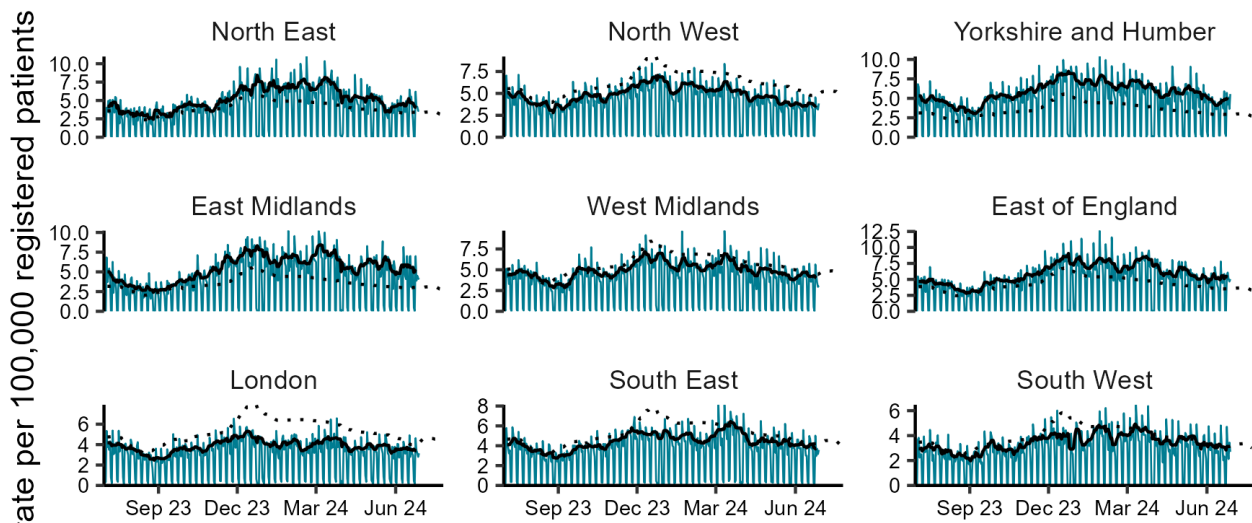
Pharyngitis

Figure 4: Daily incidence rate per 100,000 population (and 7-day moving average adjusted for bank holidays) for pharyngitis GP in hours consultations, England (a) nationally, (b) by age and (c) by UKHSA Region.



(c)

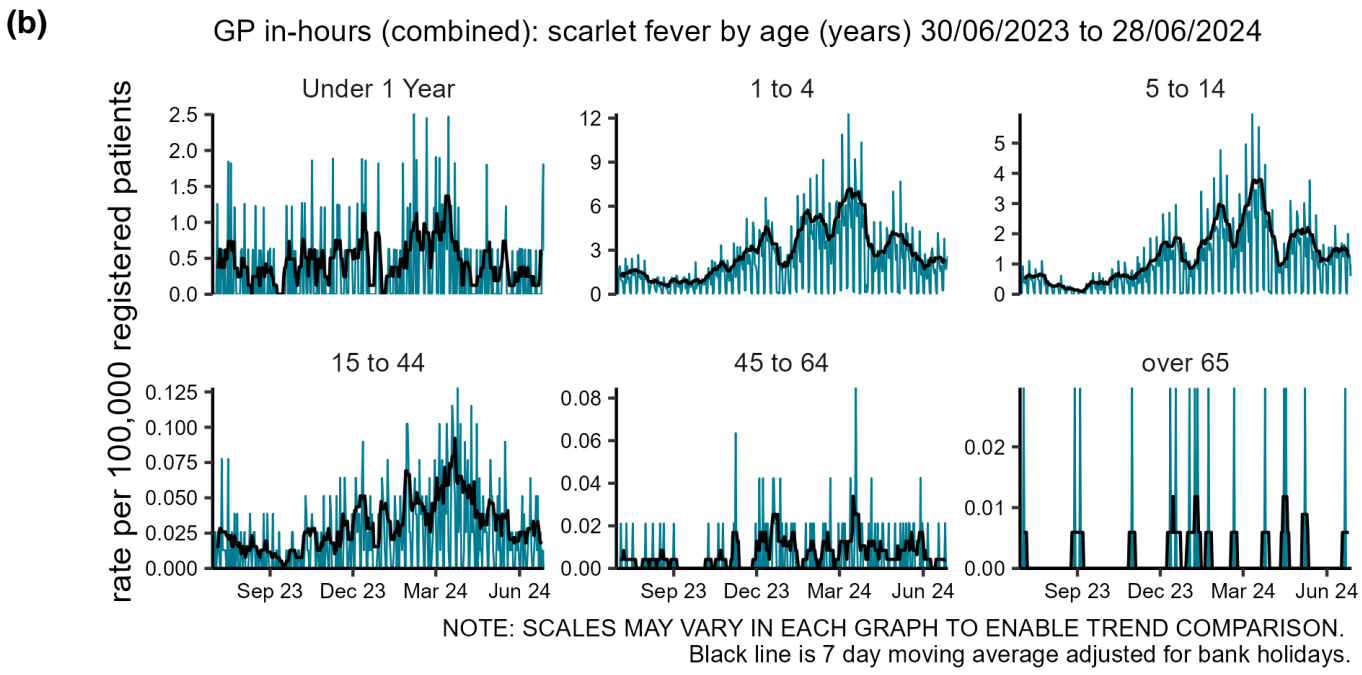
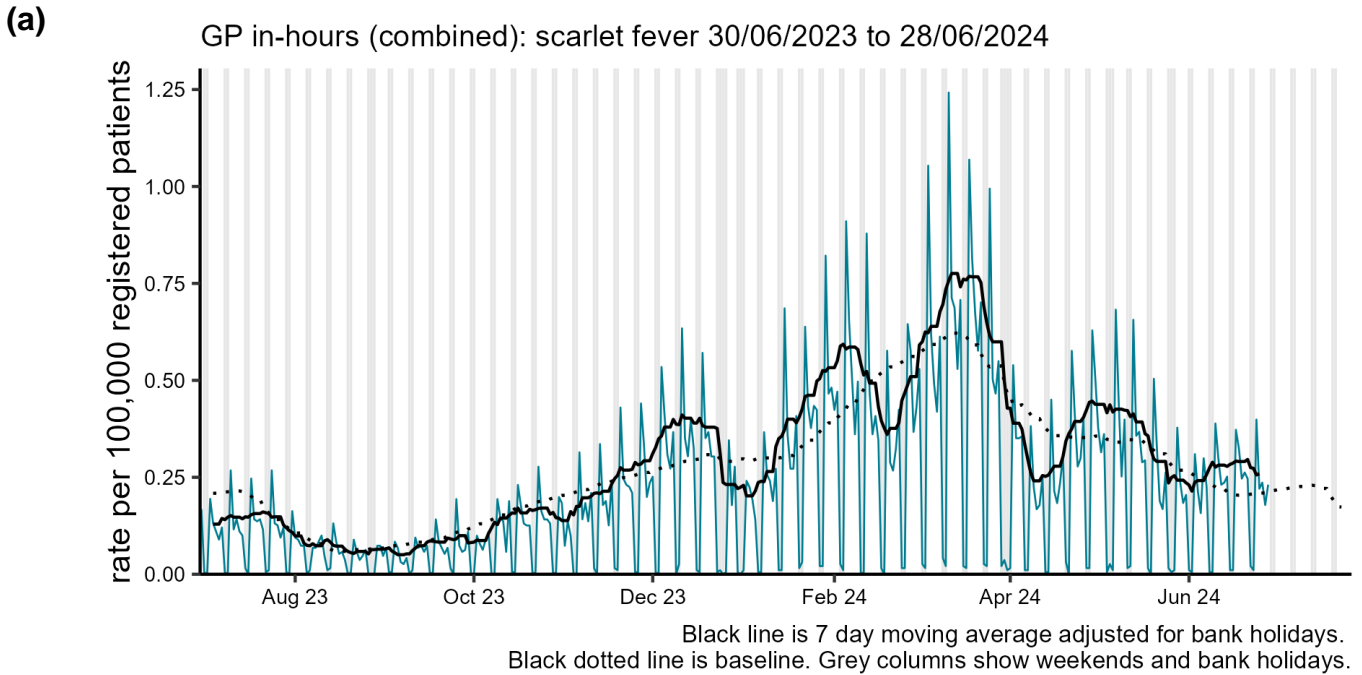
GP in-hours (combined): pharyngitis by UKHSA region 30/06/2023 to 28/06/2024



NOTE: SCALES MAY VARY IN EACH GRAPH TO ENABLE TREND COMPARISON.
Black line is 7 day moving average adjusted for bank holidays.
Black dotted line is baseline.

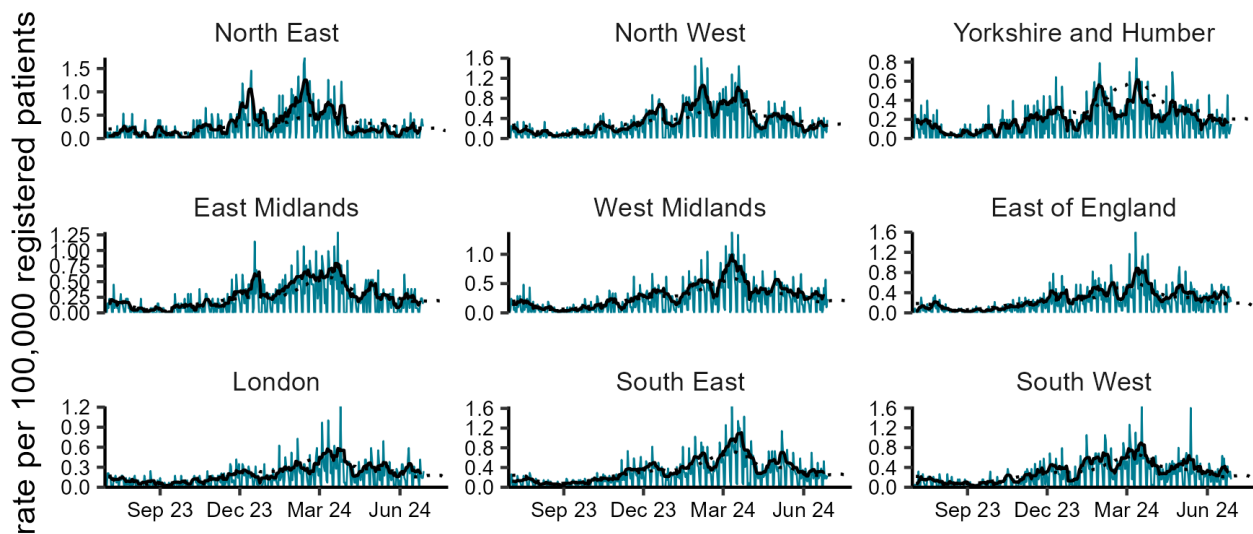
Scarlet fever

Figure 5: Daily incidence rate per 100,000 population (and 7-day moving average adjusted for bank holidays) for scarlet fever GP in hours consultations, England (a) nationally, (b) by age and (c) by UKHSA Region.



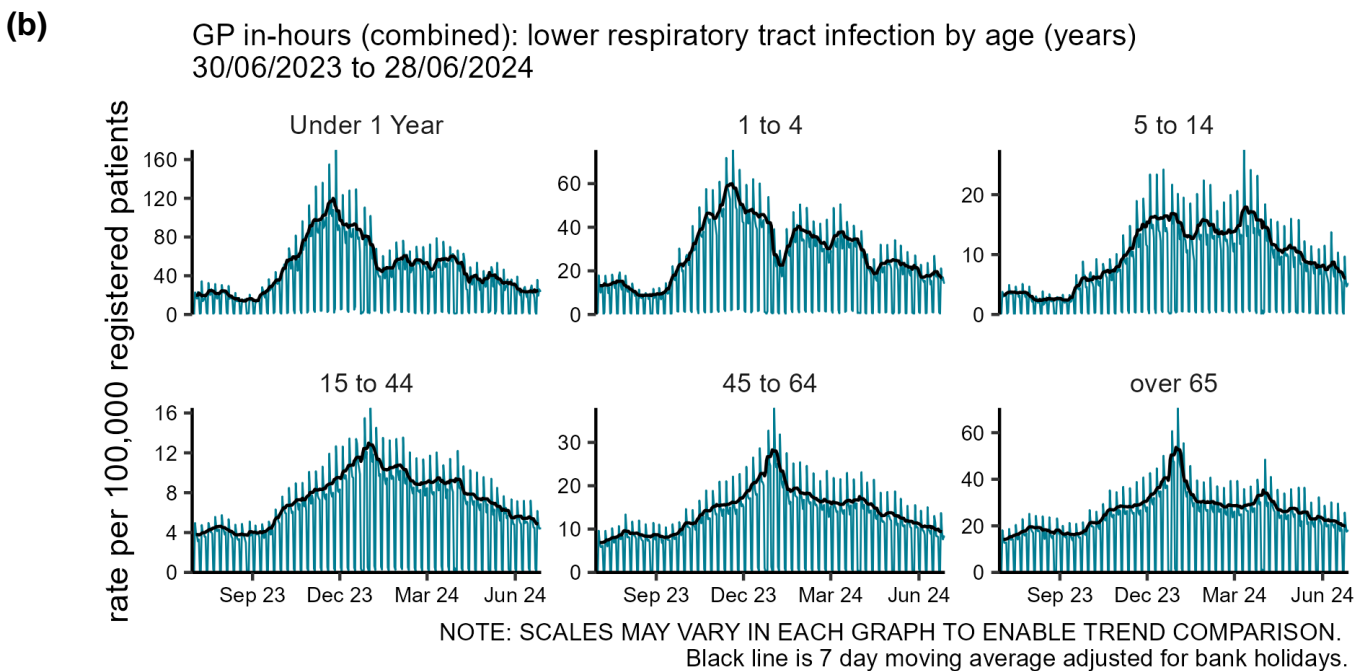
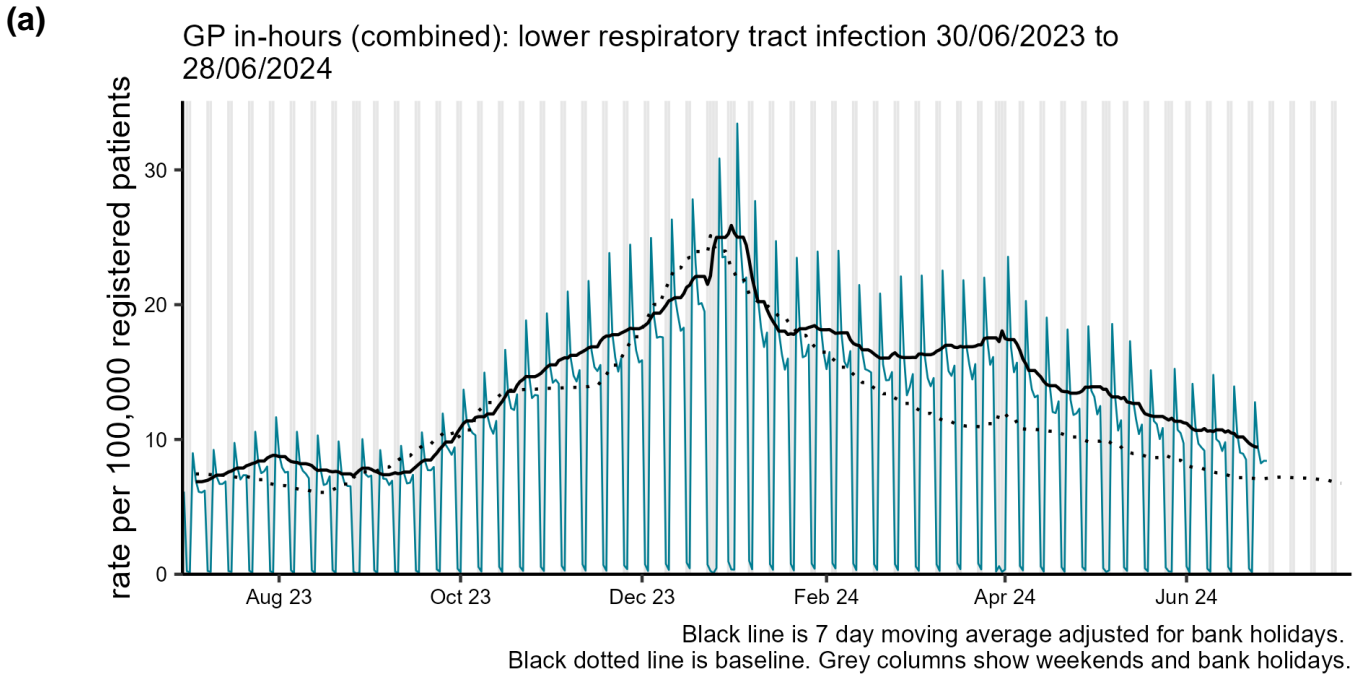
(c)

GP in-hours (combined): scarlet fever by UKHSA region 30/06/2023 to 28/06/2024



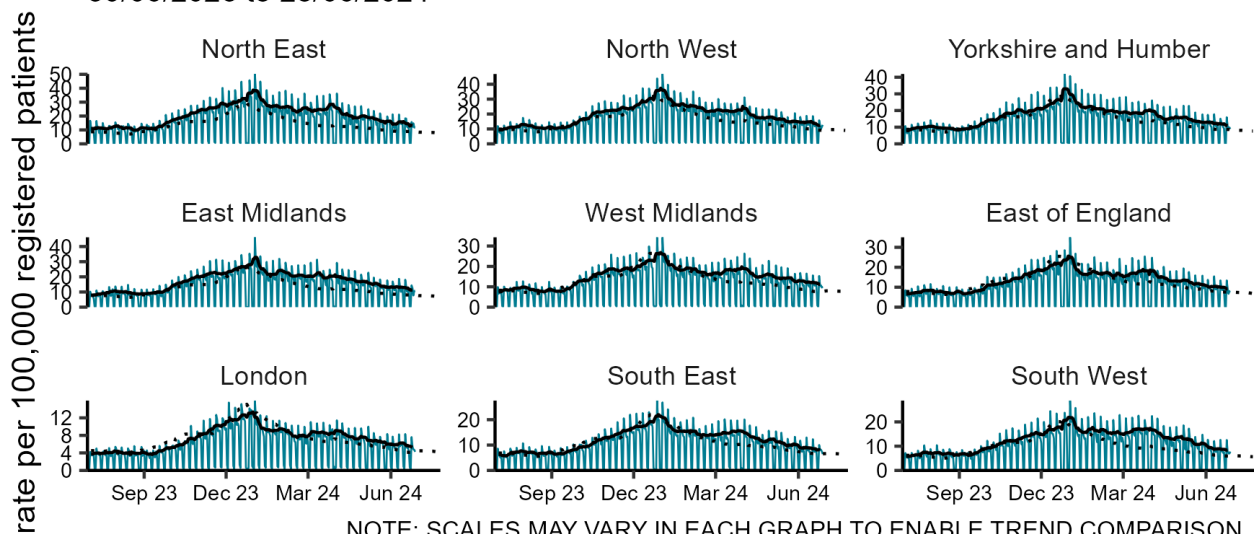
Lower respiratory tract infections

Figure 6: Daily incidence rate per 100,000 population (and 7-day moving average adjusted for bank holidays) for lower respiratory tract infections GP in hours consultations, England (a) nationally, (b) by age and (c) by UKHSA Region.



(c)

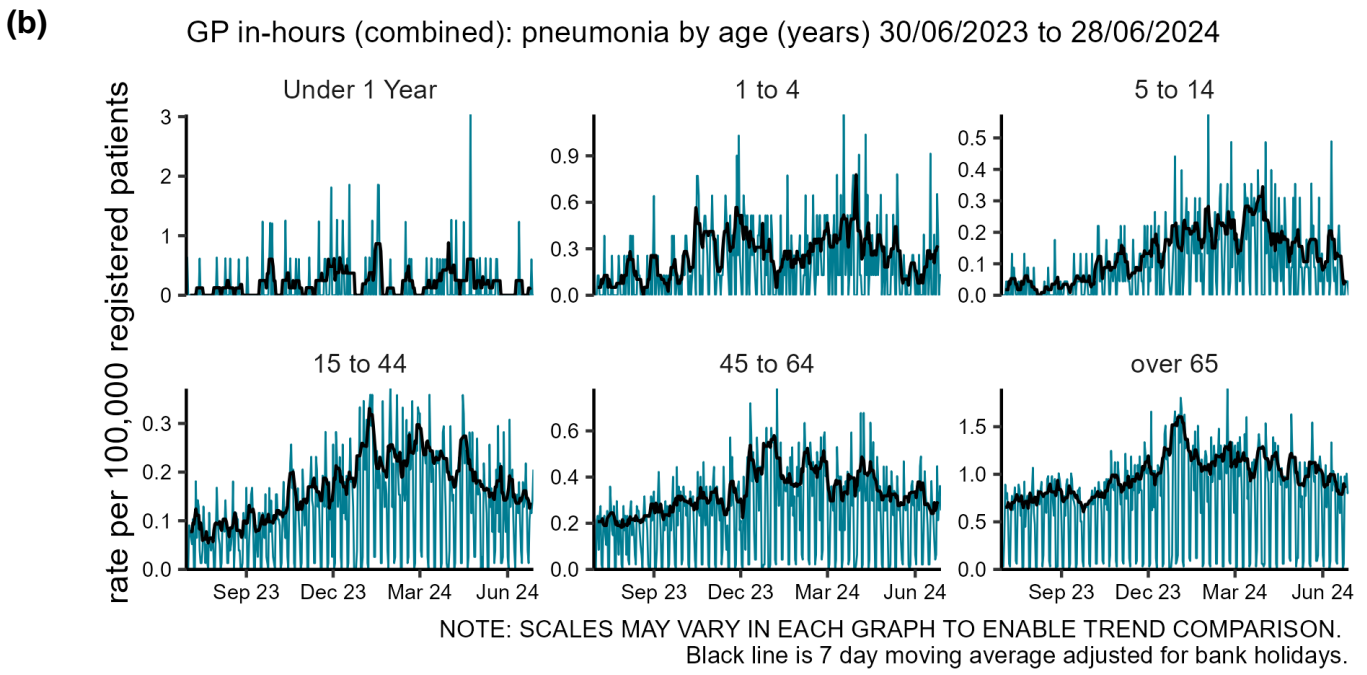
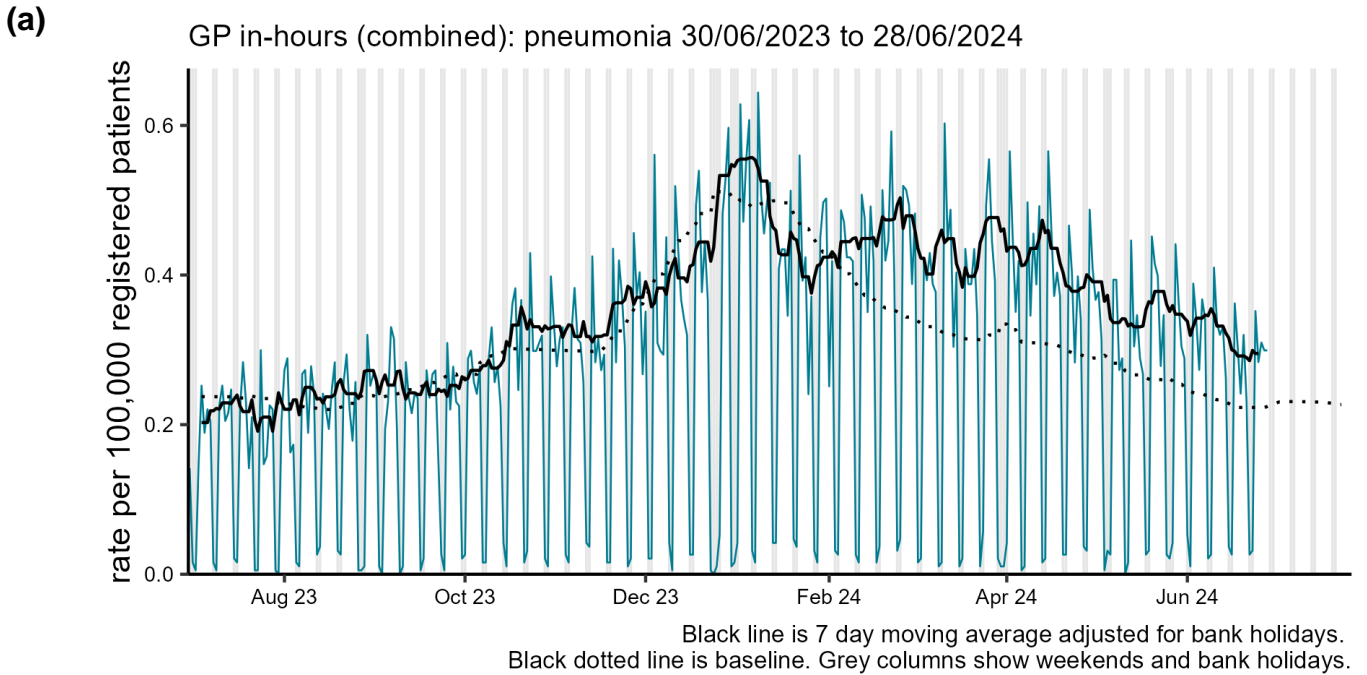
GP in-hours (combined): lower respiratory tract infection by UKHSA region
30/06/2023 to 28/06/2024



NOTE: SCALES MAY VARY IN EACH GRAPH TO ENABLE TREND COMPARISON.
Black line is 7 day moving average adjusted for bank holidays.
Black dotted line is baseline.

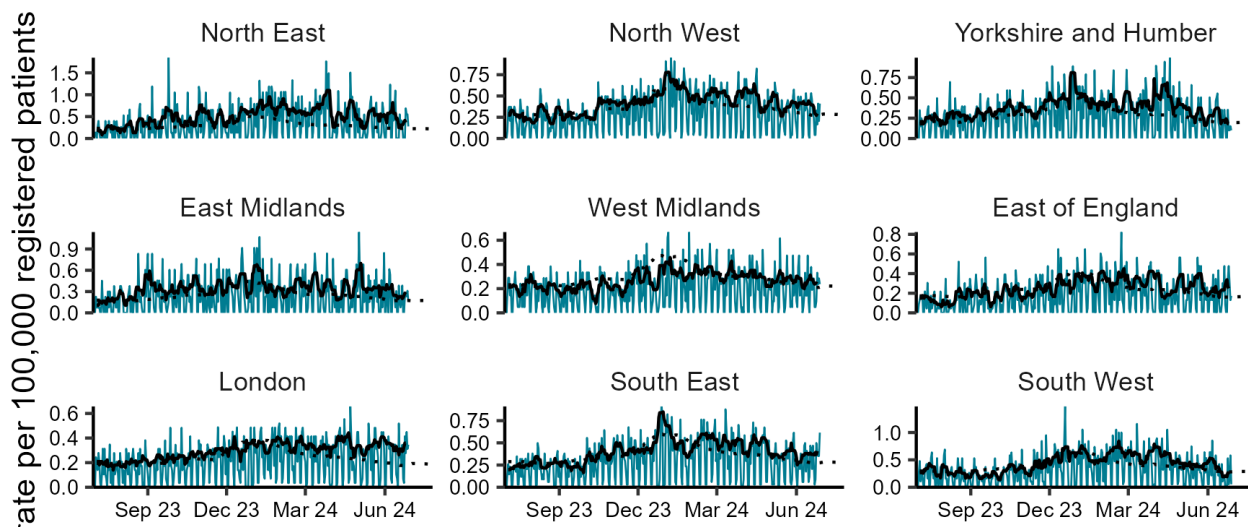
Pneumonia

Figure 7: Daily incidence rate per 100,000 population (and 7-day moving average adjusted for bank holidays) for pneumonia GP in hours consultations, England (a) nationally, (b) by age and (c) by UKHSA Region.



(c)

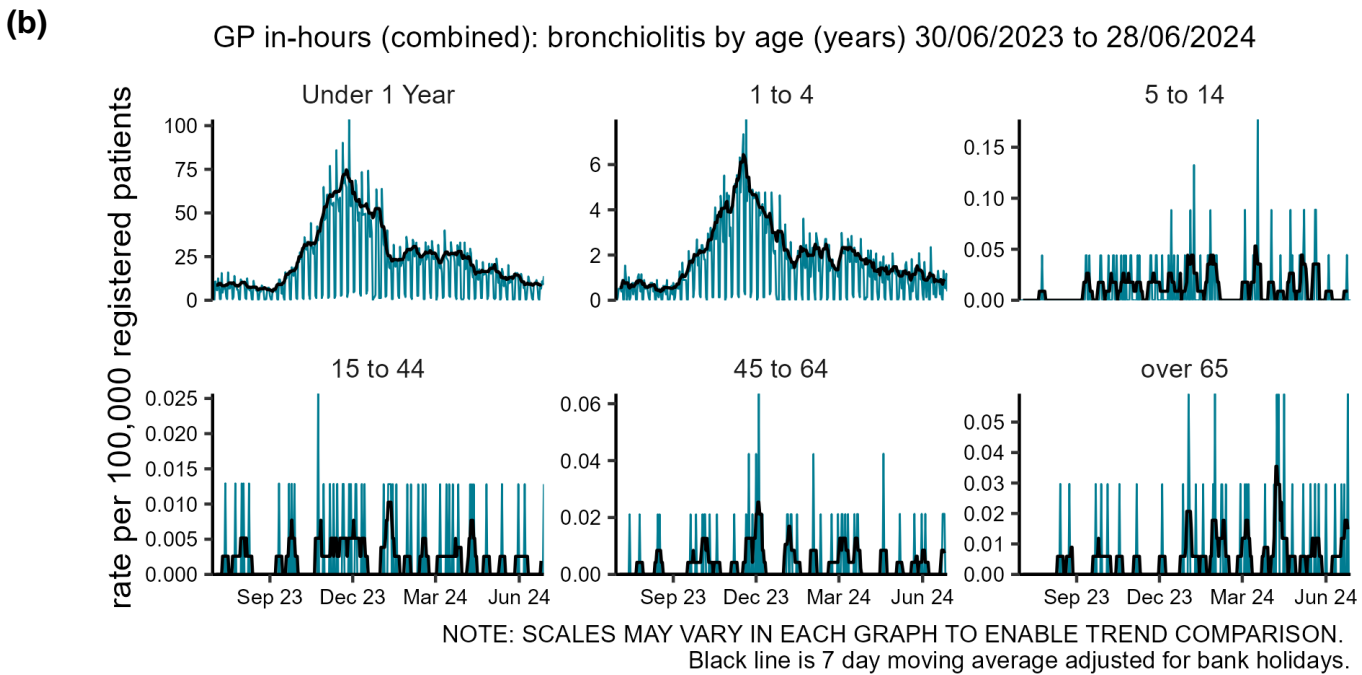
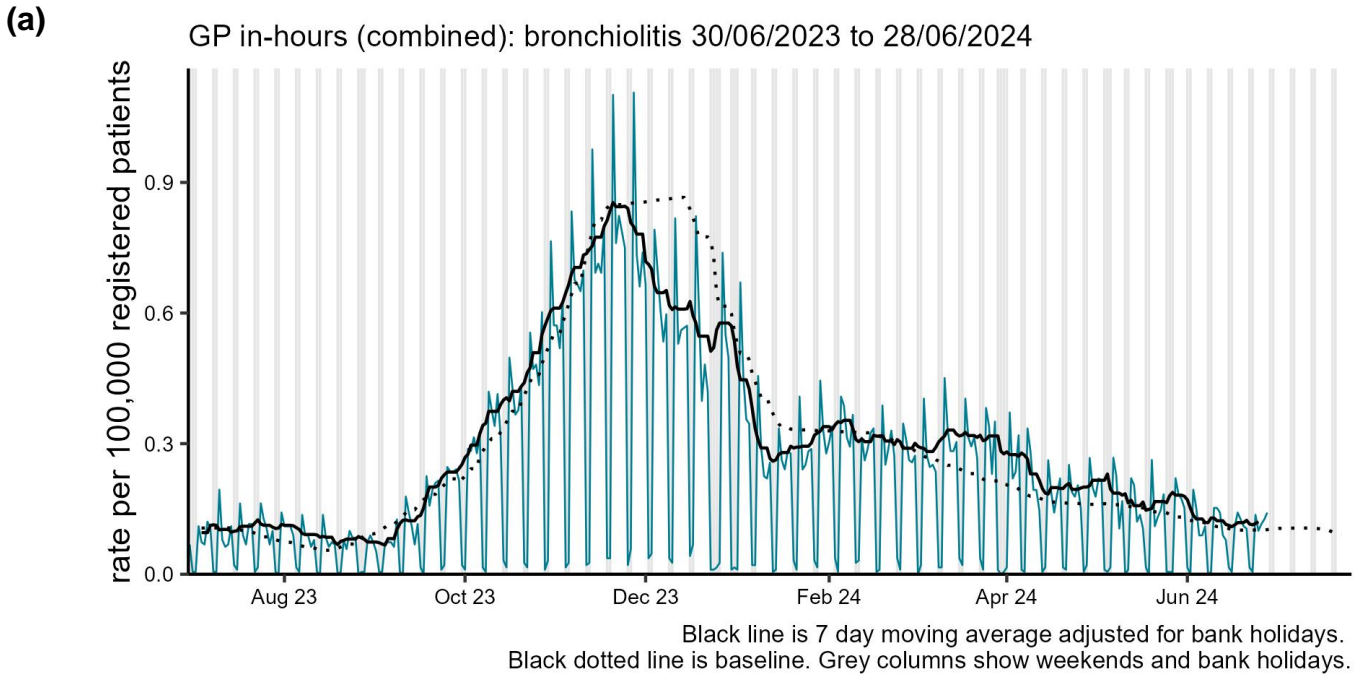
GP in-hours (combined): pneumonia by UKHSA region 30/06/2023 to 28/06/2024



NOTE: SCALES MAY VARY IN EACH GRAPH TO ENABLE TREND COMPARISON.
Black line is 7 day moving average adjusted for bank holidays.
Black dotted line is baseline.

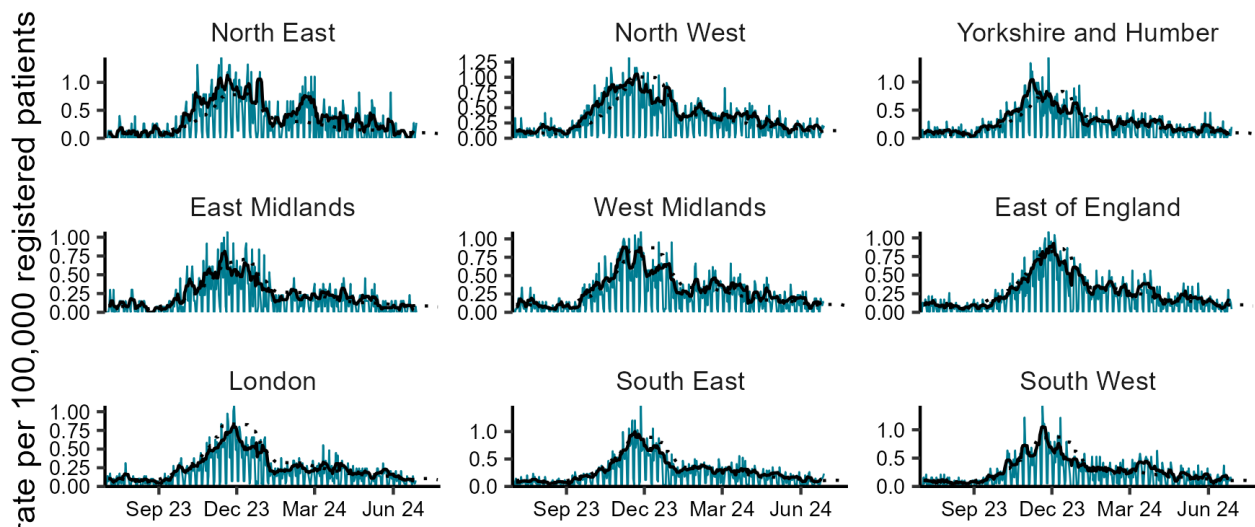
Bronchiolitis

Figure 8: Daily incidence rate per 100,000 population (and 7-day moving average adjusted for bank holidays) for bronchiolitis GP in hours consultations, England (a) nationally, (b) by age and (c) by UKHSA Region.



(c)

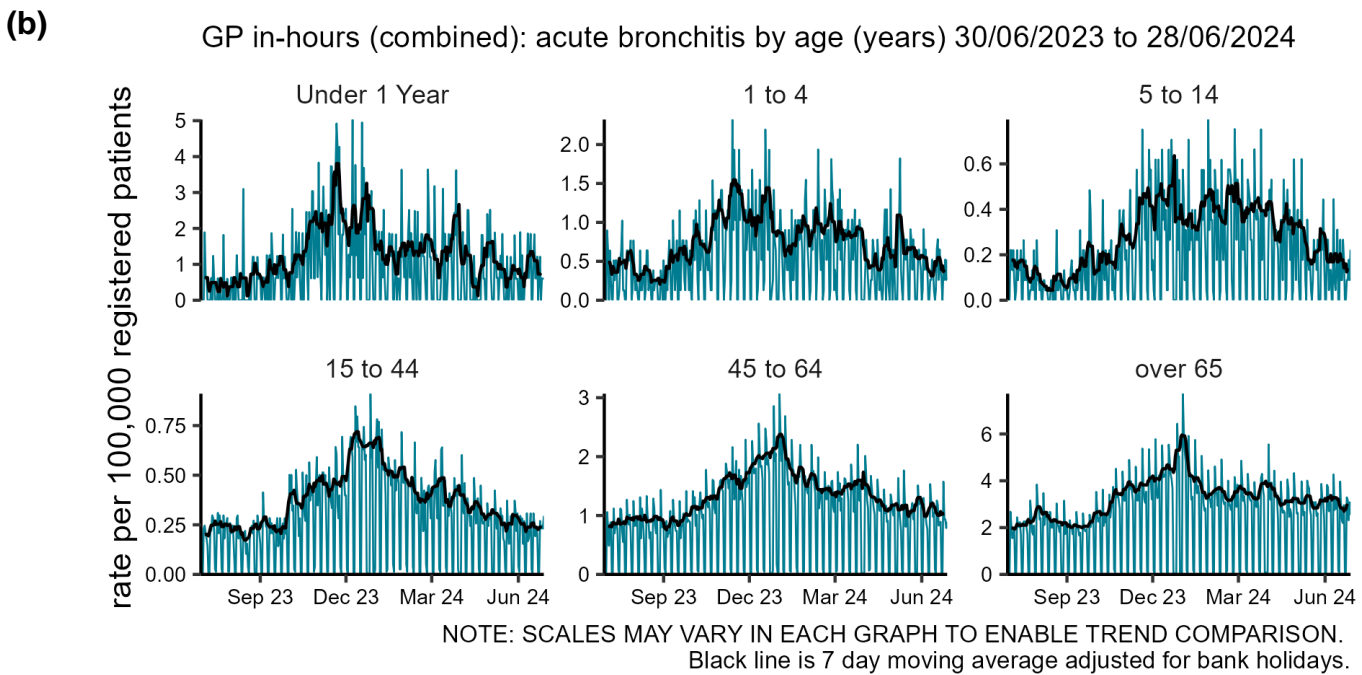
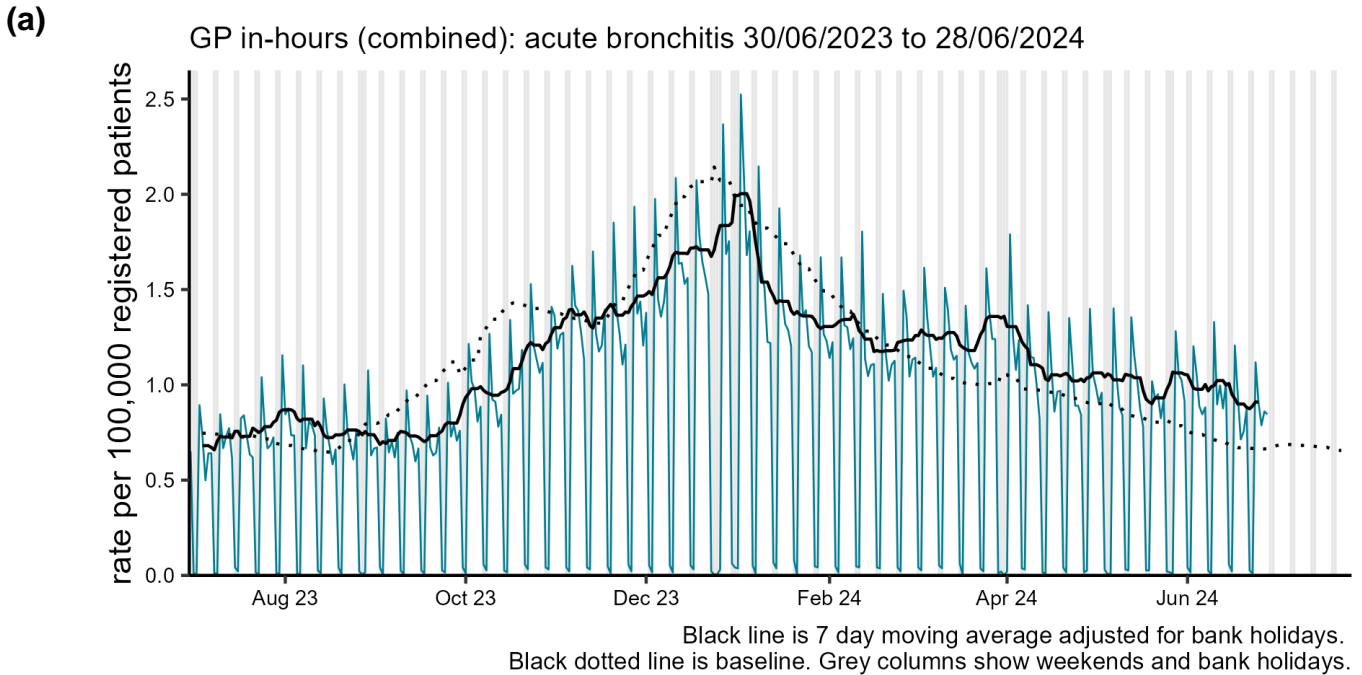
GP in-hours (combined): bronchiolitis by UKHSA region 30/06/2023 to 28/06/2024



NOTE: SCALES MAY VARY IN EACH GRAPH TO ENABLE TREND COMPARISON.
Black line is 7 day moving average adjusted for bank holidays.
Black dotted line is baseline.

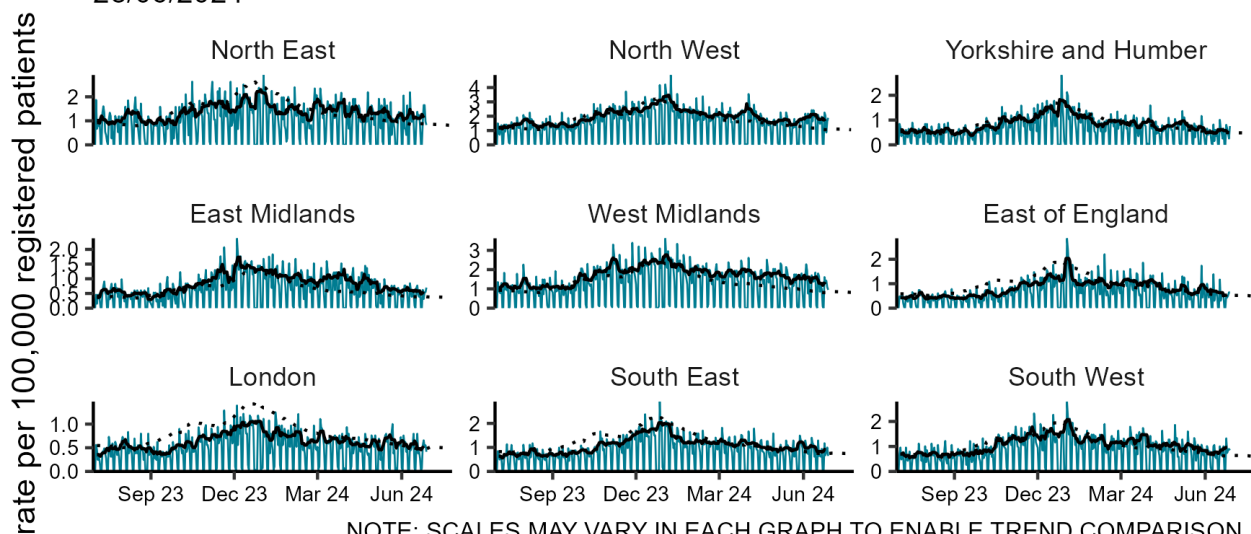
Acute bronchitis

Figure 9: Daily incidence rate per 100,000 population (and 7-day moving average adjusted for bank holidays) for acute bronchitis GP in hours consultations, England (a) nationally, (b) by age and (c) by UKHSA Region.



(c)

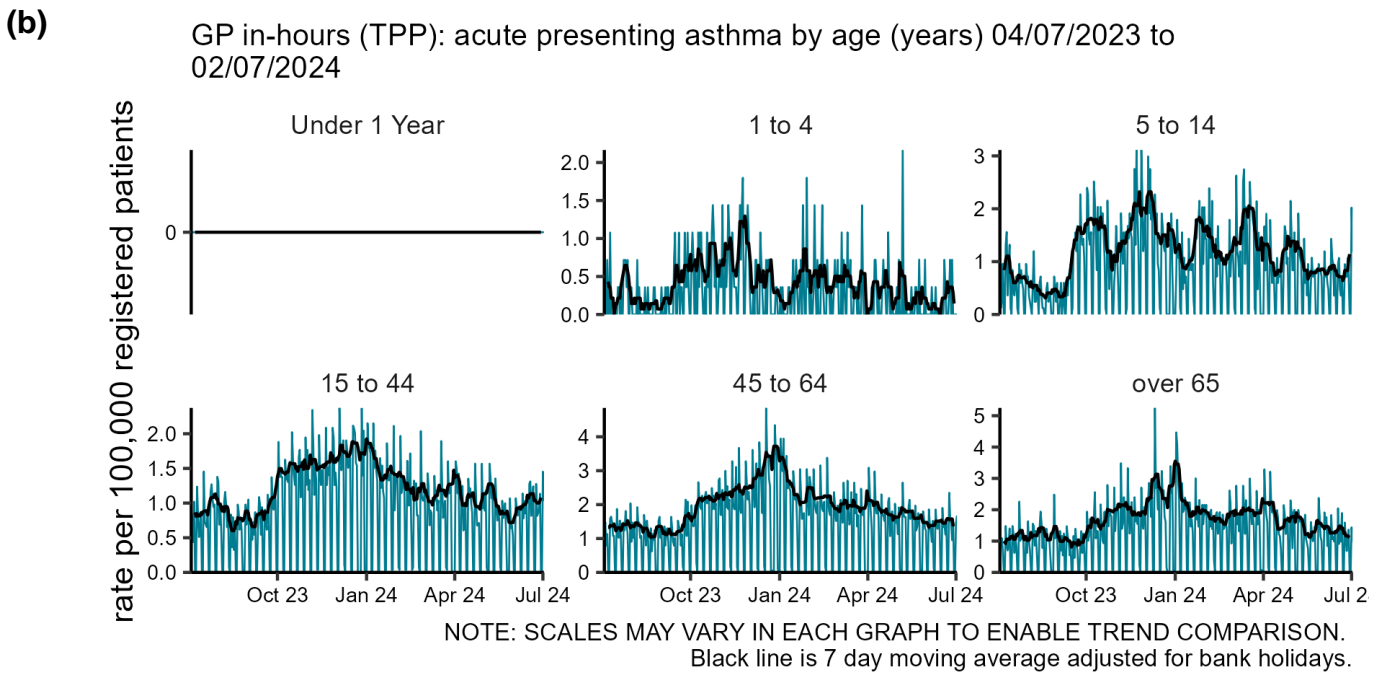
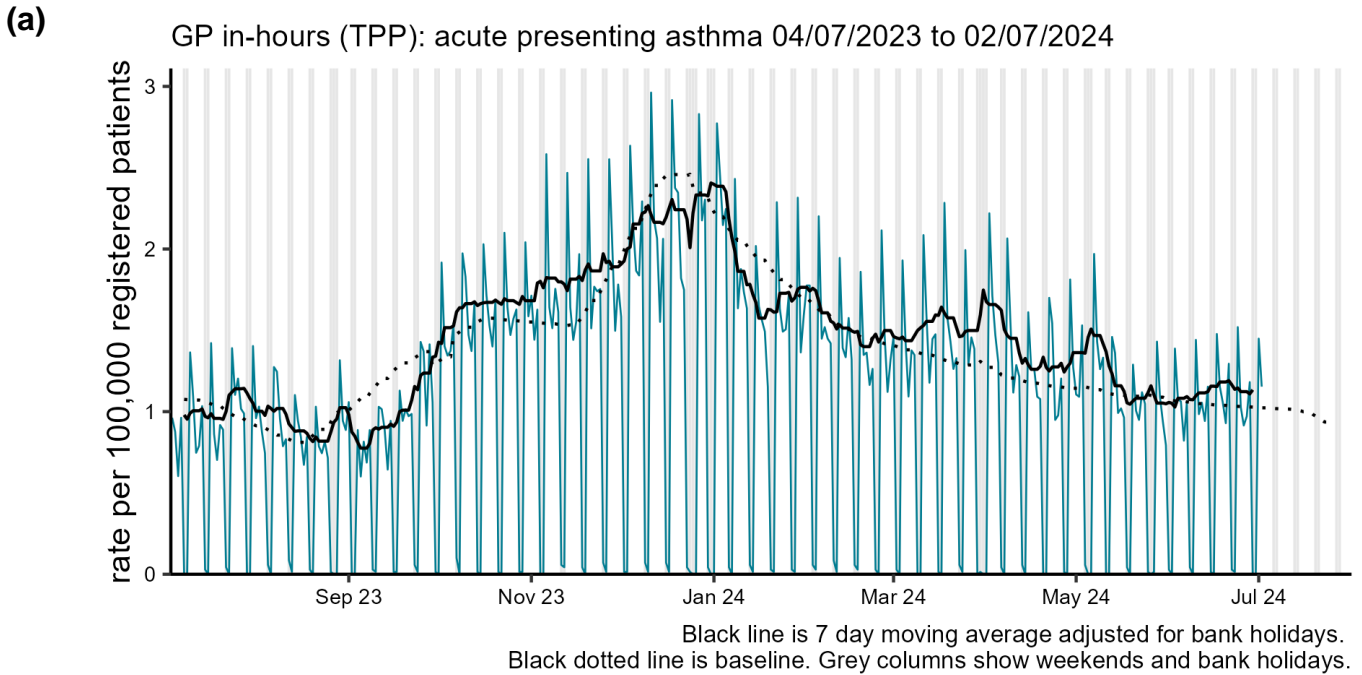
GP in-hours (combined): acute bronchitis by UKHSA region 30/06/2023 to 28/06/2024



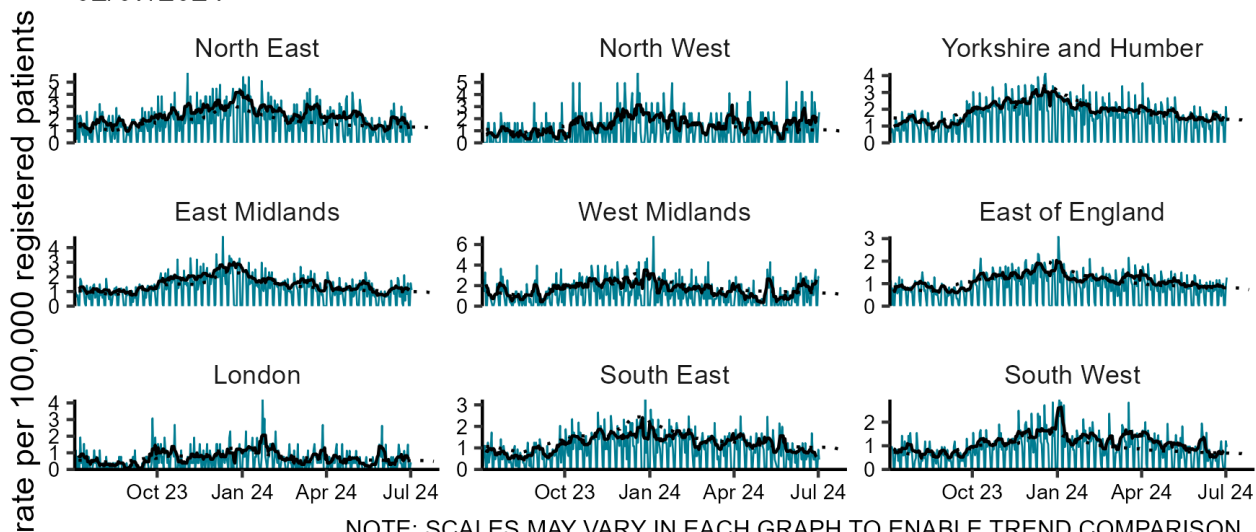
NOTE: SCALES MAY VARY IN EACH GRAPH TO ENABLE TREND COMPARISON.
Black line is 7 day moving average adjusted for bank holidays.
Black dotted line is baseline.

Acute presenting asthma

Figure 10: Daily incidence rate per 100,000 population (and 7-day moving average adjusted for bank holidays) for acute presenting asthma GP in hours consultations, England (a) nationally, (b) by age and (c) by UKHSA Region.



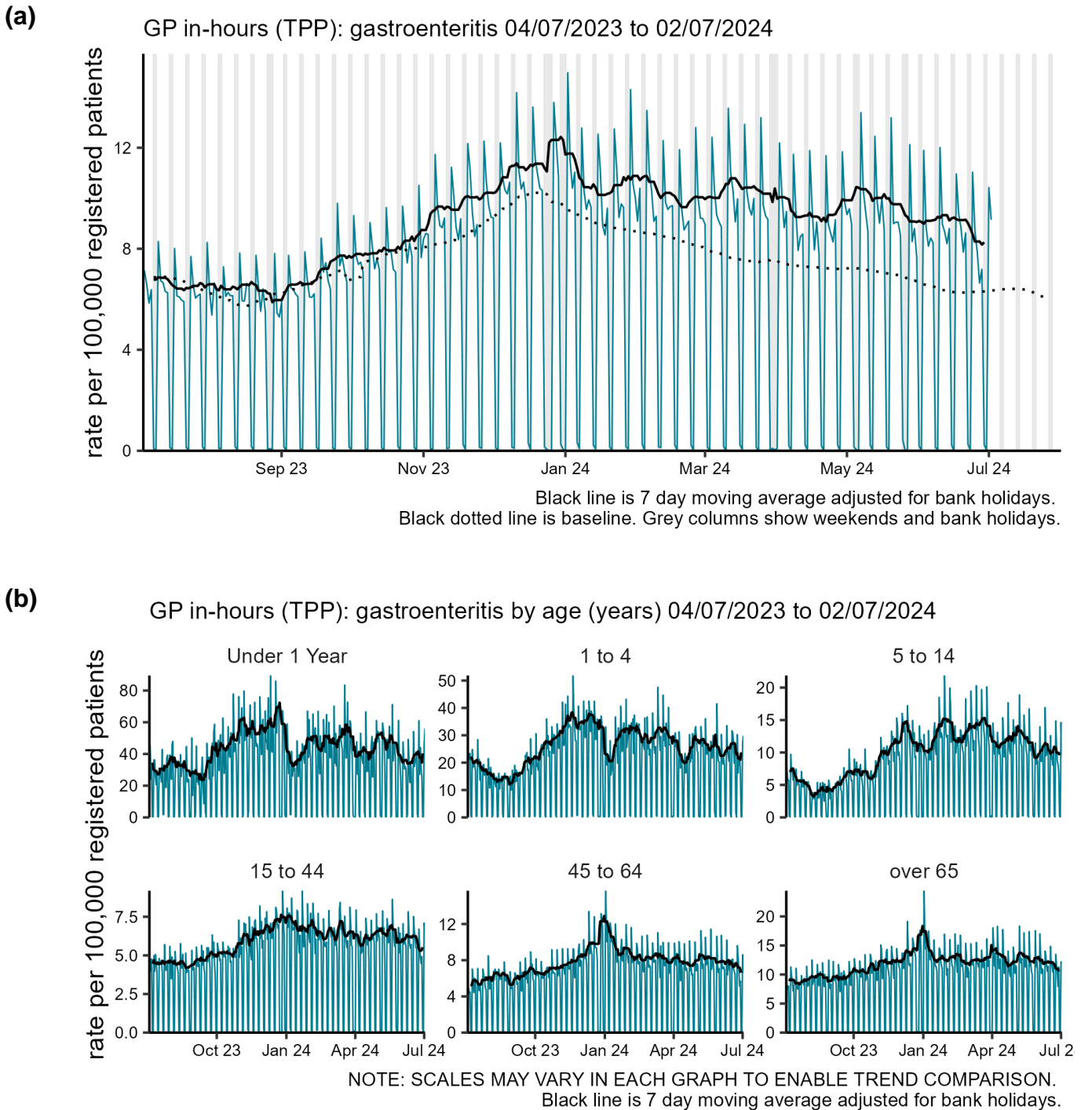
(c) GP in-hours (TPP): acute presenting asthma by UKHSA region 04/07/2023 to 02/07/2024



Gastrointestinal conditions

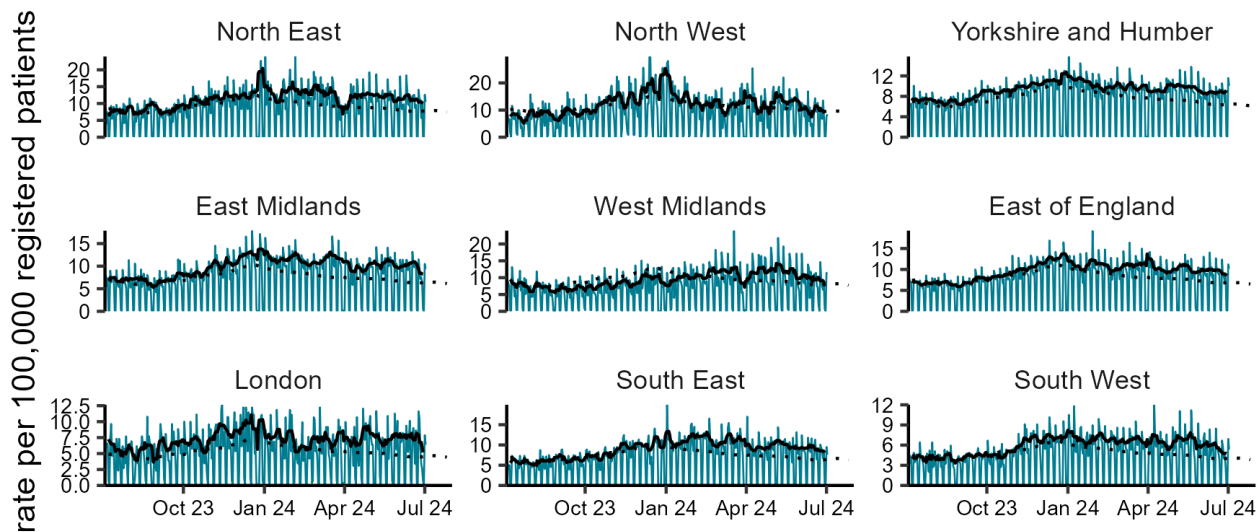
Gastroenteritis

Figure 11: Daily incidence rate per 100,000 population (and 7-day moving average adjusted for bank holidays) for gastroenteritis GP in hours consultations, England (a) nationally, (b) by age and (c) by UKHSA Region.



(c)

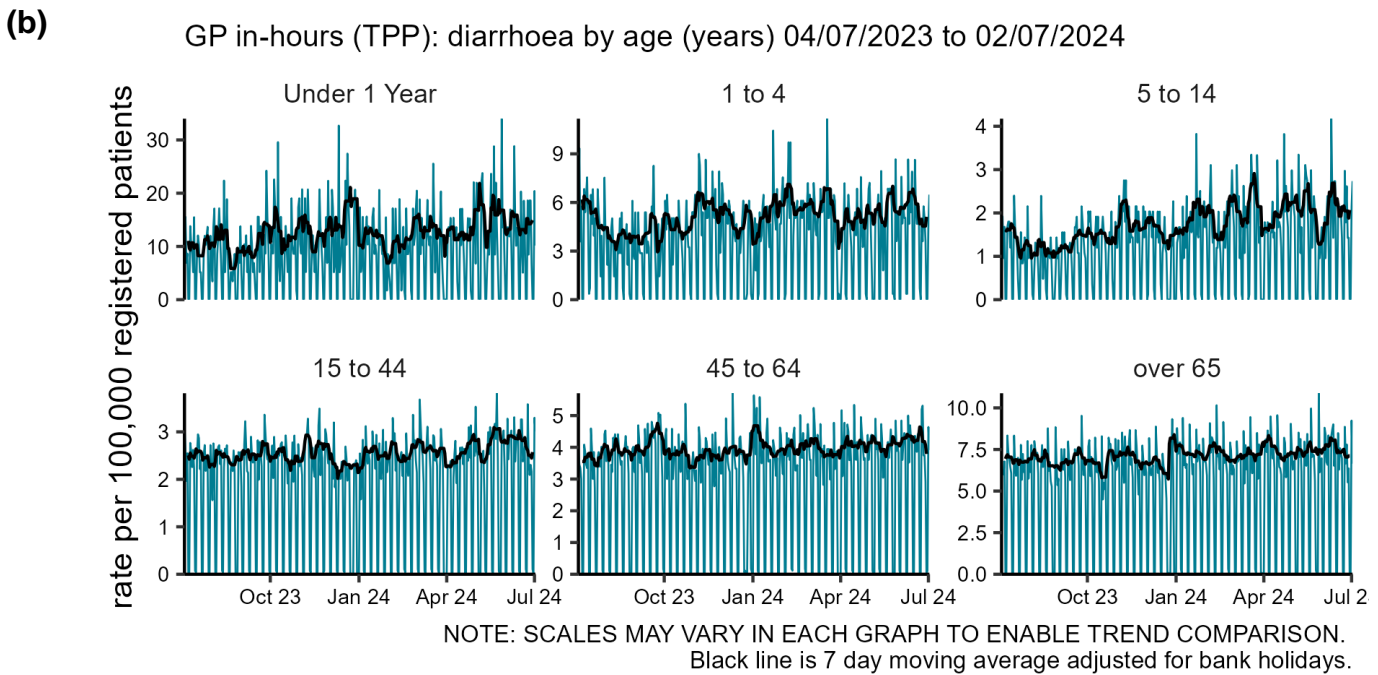
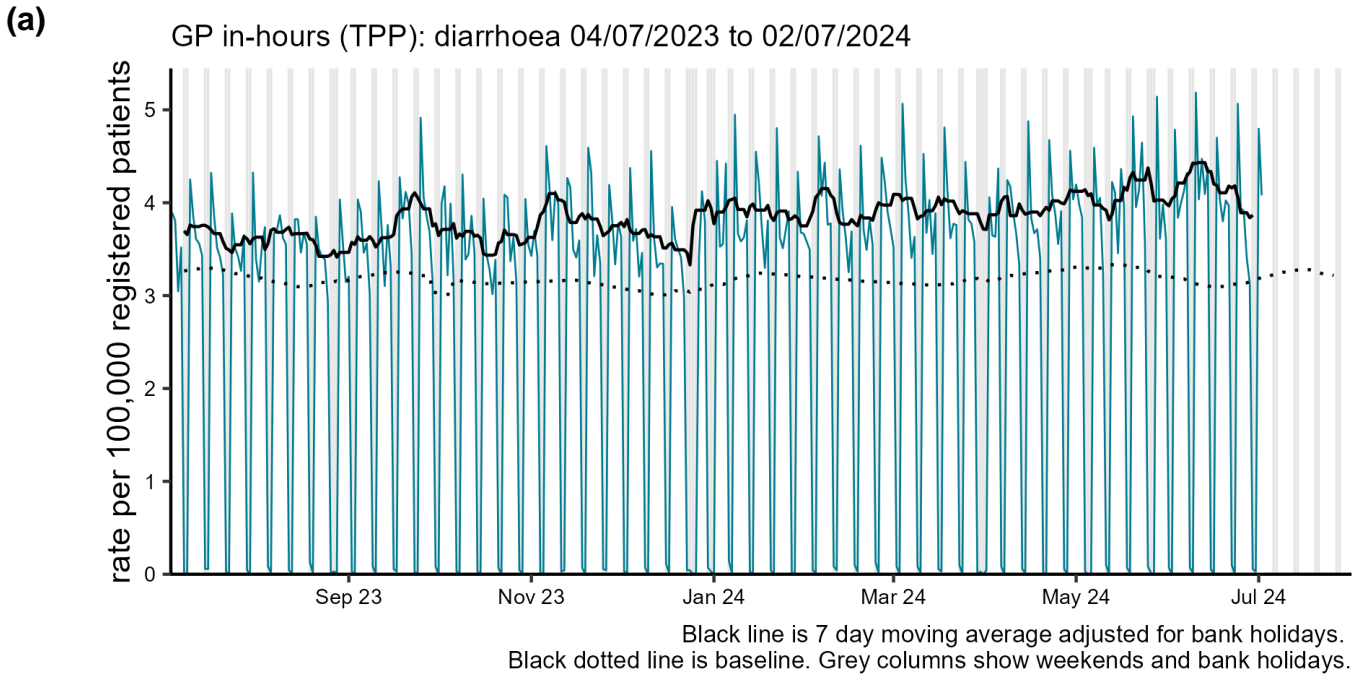
GP in-hours (TPP): gastroenteritis by UKHSA region 04/07/2023 to 02/07/2024



NOTE: SCALES MAY VARY IN EACH GRAPH TO ENABLE TREND COMPARISON.
Black line is 7 day moving average adjusted for bank holidays.
Black dotted line is baseline.

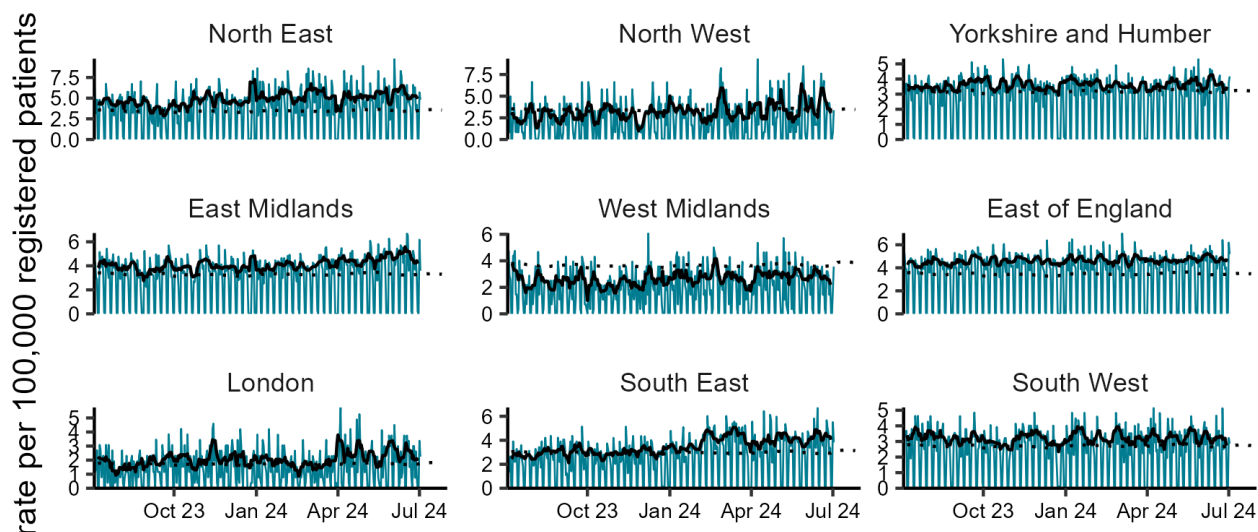
Diarrhoea

Figure 12: Daily incidence rate per 100,000 population (and 7-day moving average adjusted for bank holidays) for diarrhoea GP in hours consultations, England (a) nationally, (b) by age and (c) by UKHSA Region.



(c)

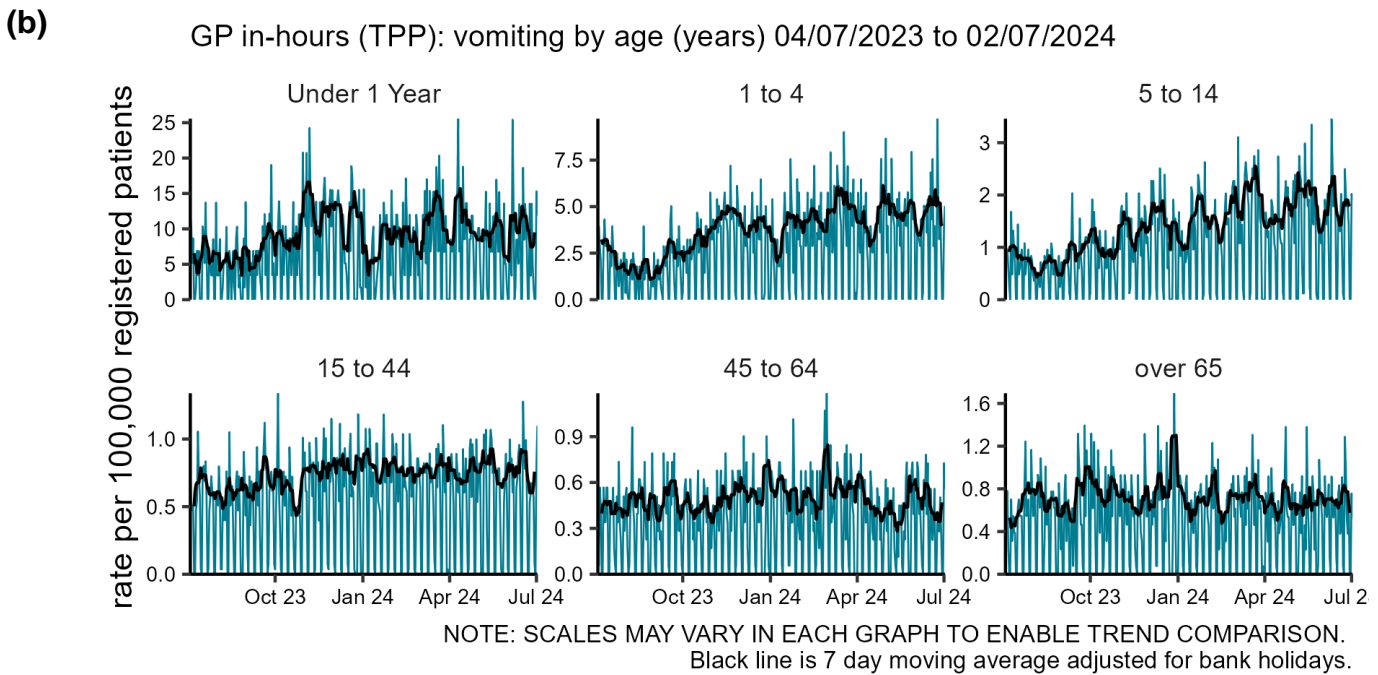
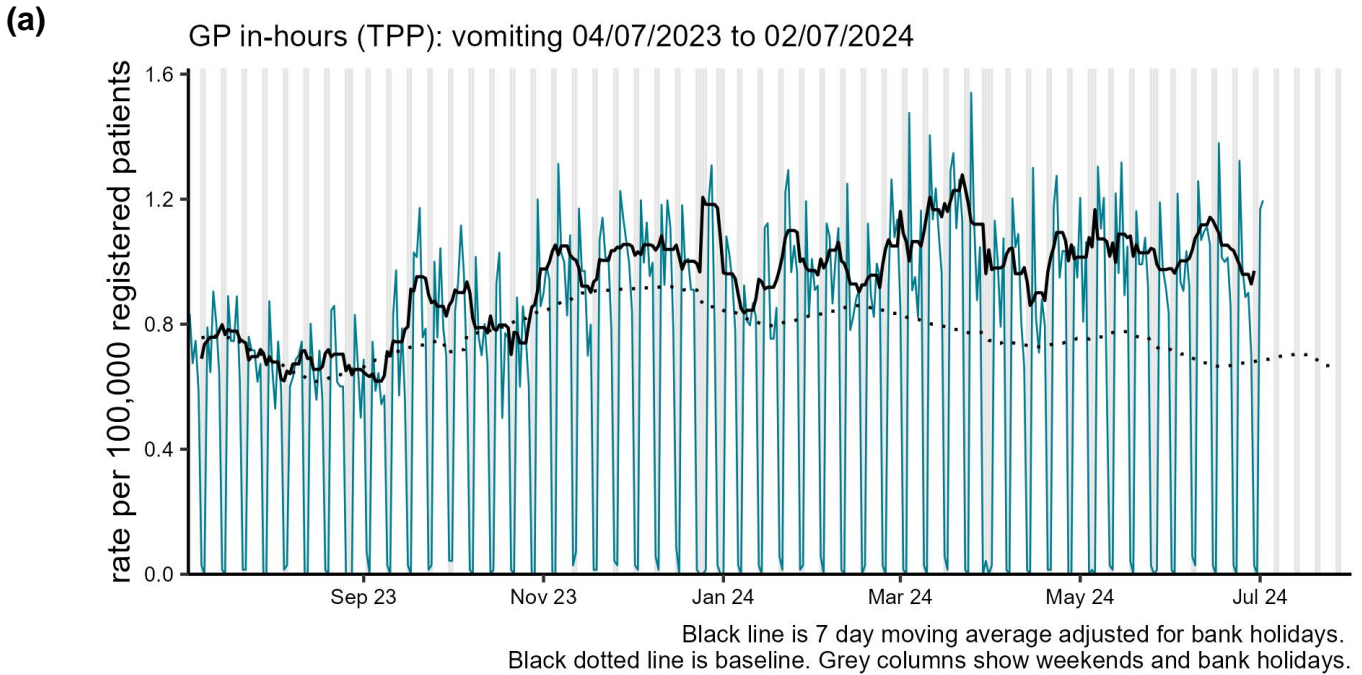
GP in-hours (TPP): diarrhoea by UKHSA region 04/07/2023 to 02/07/2024



NOTE: SCALES MAY VARY IN EACH GRAPH TO ENABLE TREND COMPARISON.
Black line is 7 day moving average adjusted for bank holidays.
Black dotted line is baseline.

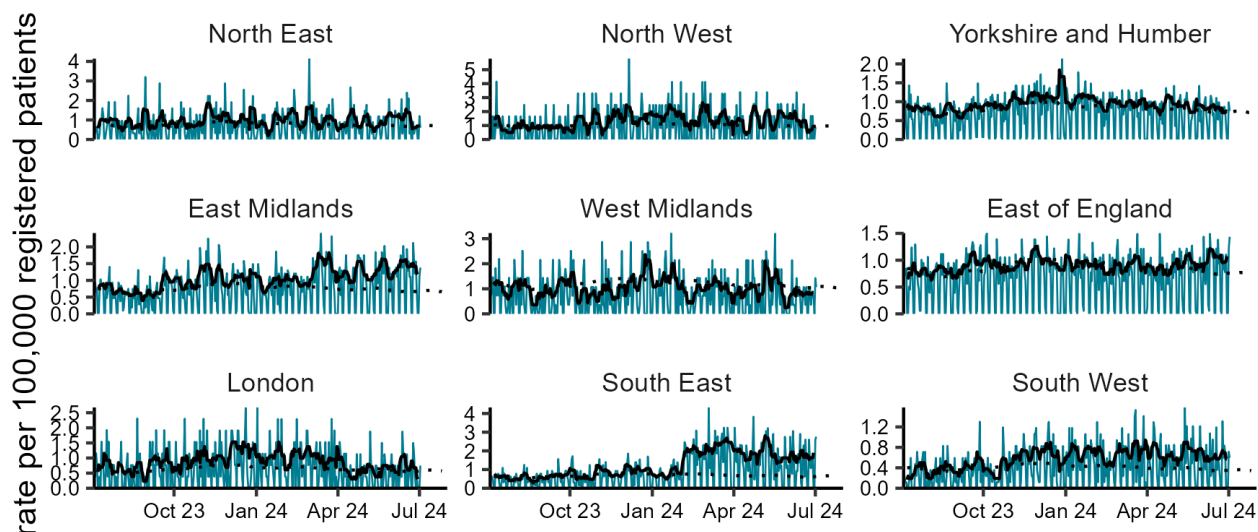
Vomiting

Figure 13: Daily incidence rate per 100,000 population (and 7-day moving average adjusted for bank holidays) for vomiting GP in hours consultations, England (a) nationally, (b) by age and (c) by UKHSA Region.



(c)

GP in-hours (TPP): vomiting by UKHSA region 04/07/2023 to 02/07/2024

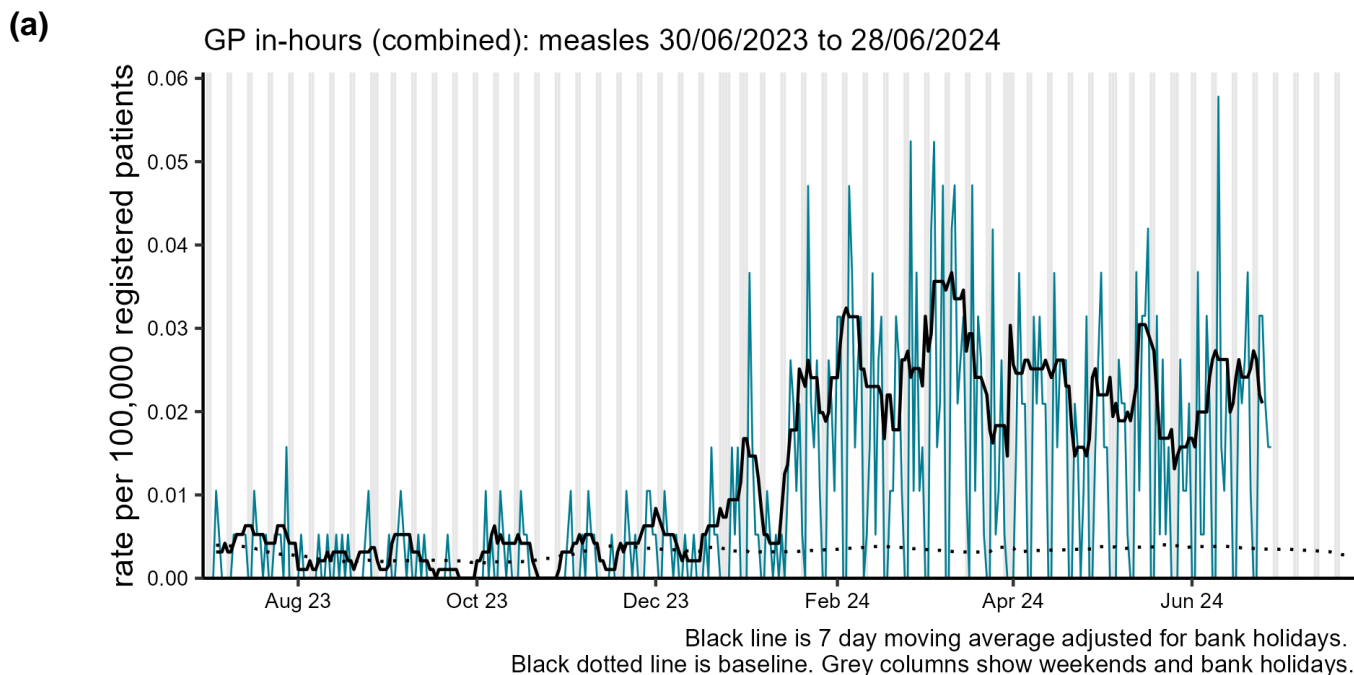


NOTE: SCALES MAY VARY IN EACH GRAPH TO ENABLE TREND COMPARISON.
Black line is 7 day moving average adjusted for bank holidays.
Black dotted line is baseline.

Vaccine preventable conditions

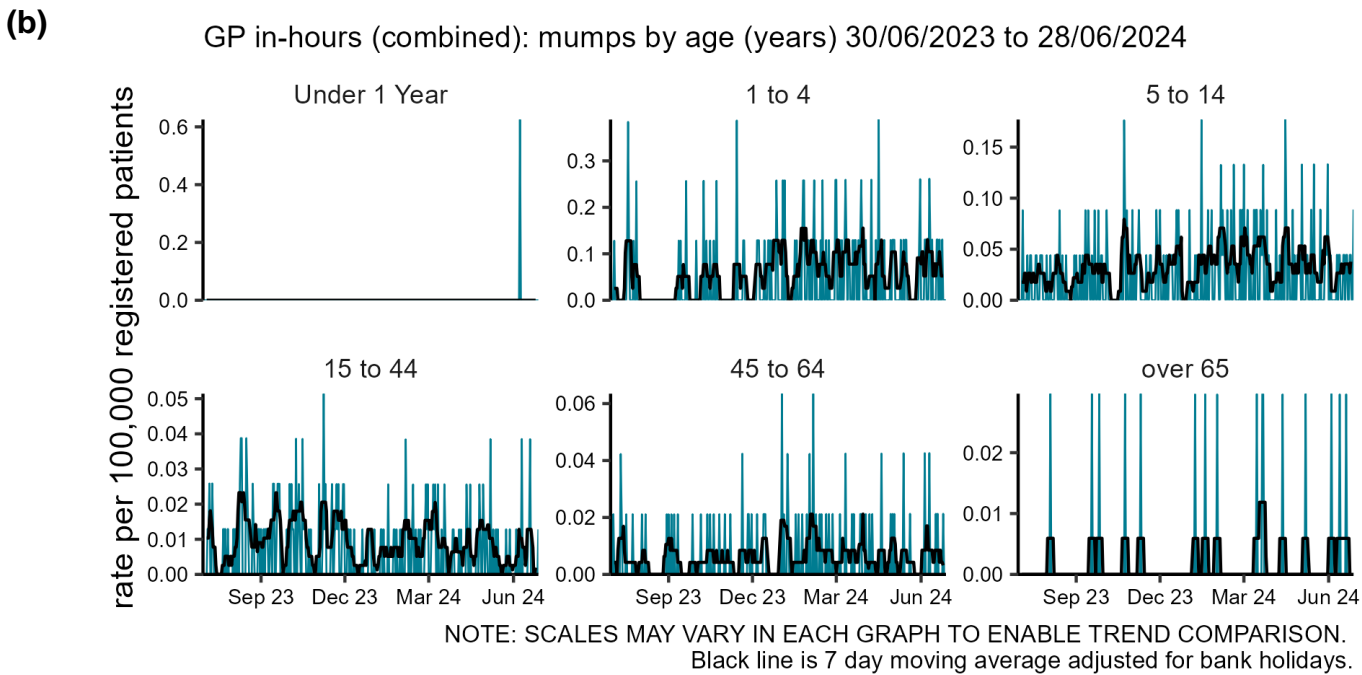
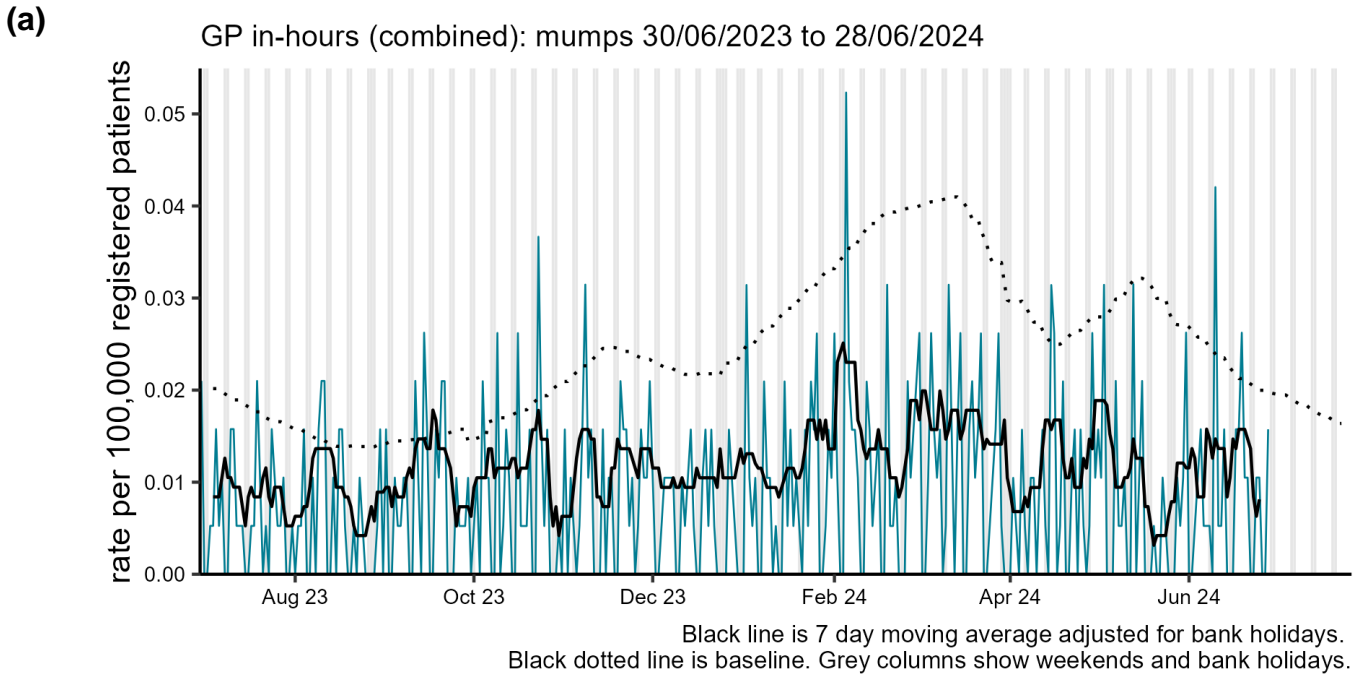
Measles

Figure 14: Daily incidence rate per 100,000 population (and 7-day moving average adjusted for bank holidays) for measles GP in hours consultations, England (a) nationally.



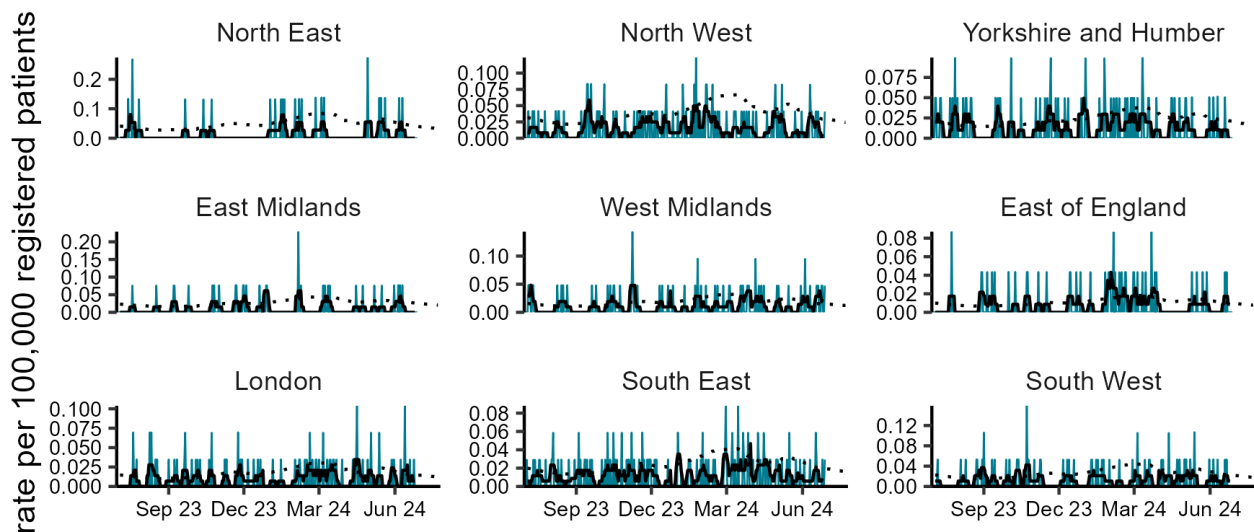
Mumps

Figure 15: Daily incidence rate per 100,000 population (and 7-day moving average adjusted for bank holidays) for mumps GP in hours consultations, England (a) nationally, (b) by age and (c) by UKHSA Region.



(c)

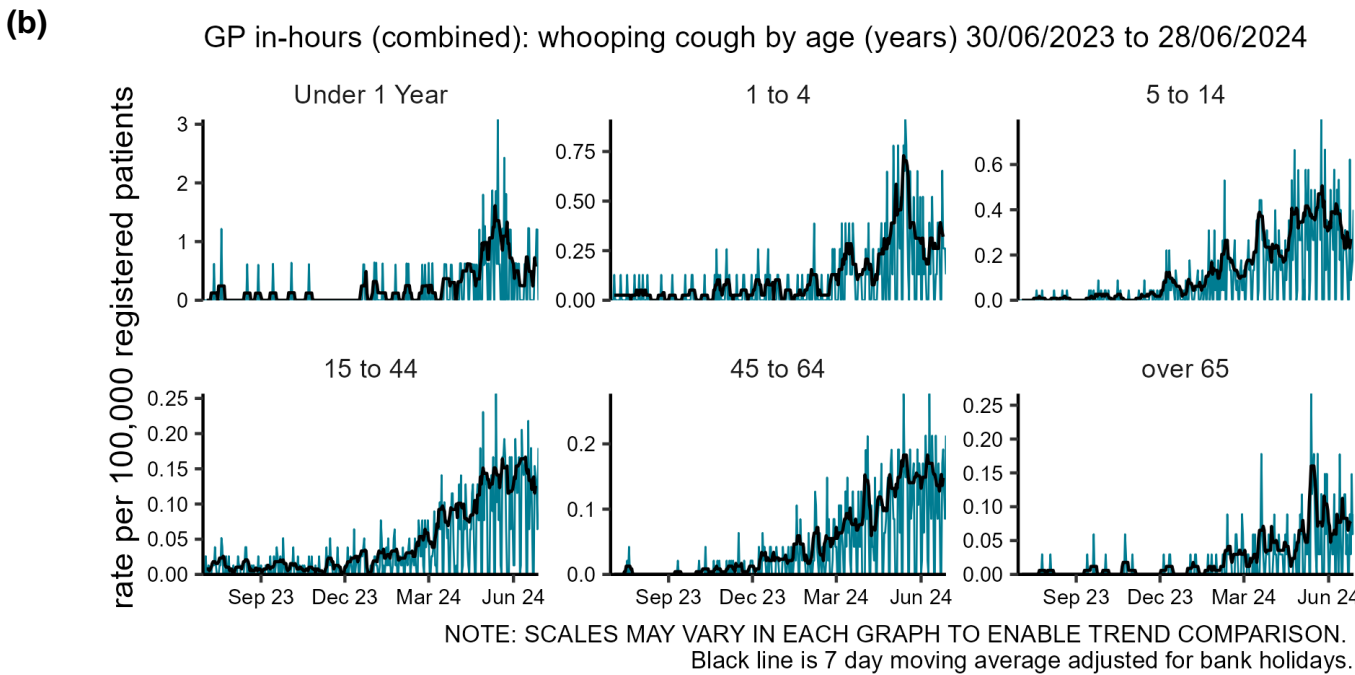
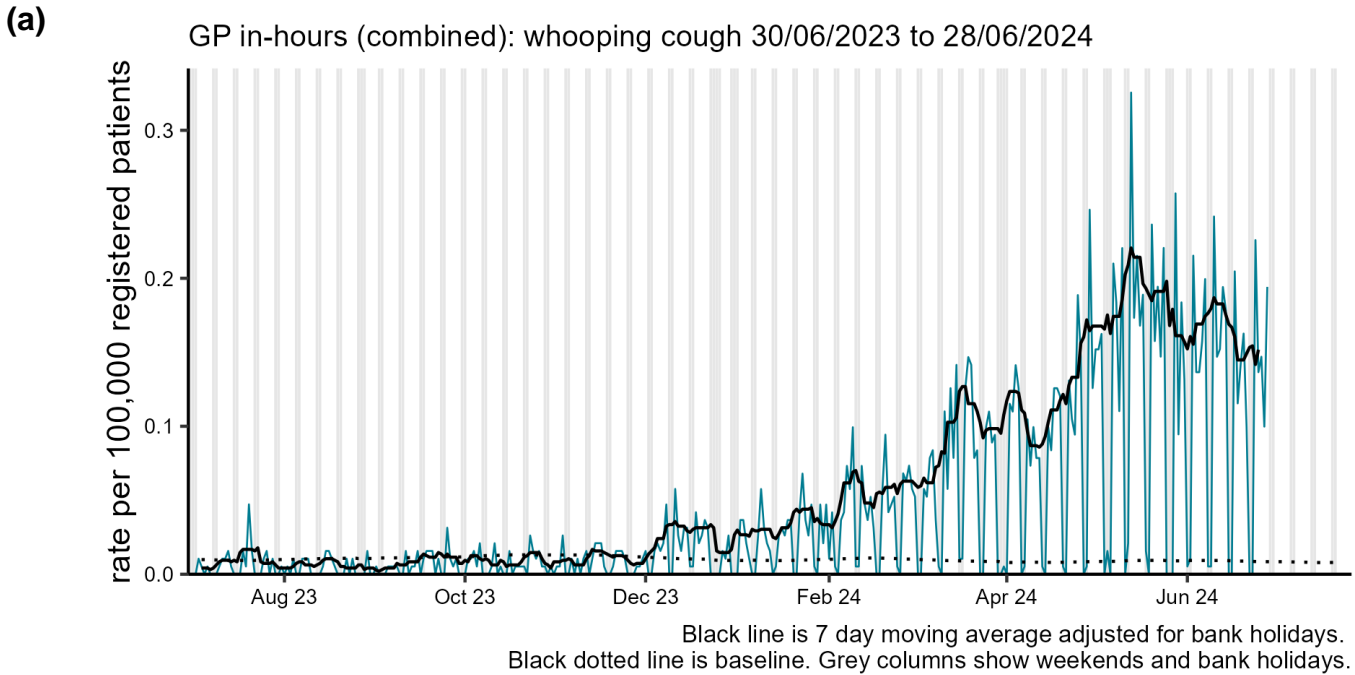
GP in-hours (combined): mumps by UKHSA region 30/06/2023 to 28/06/2024



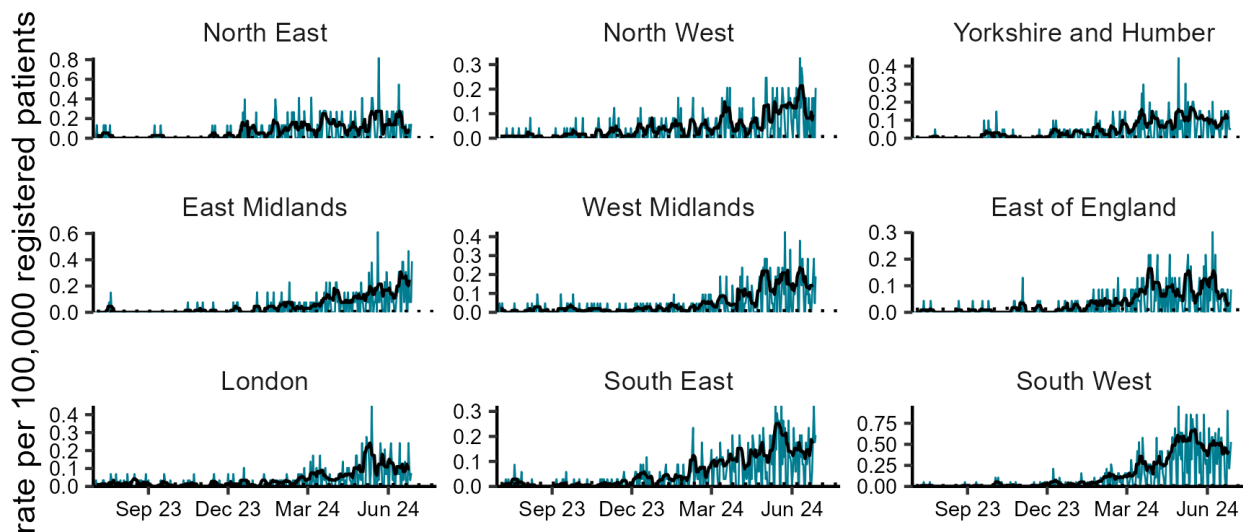
NOTE: SCALES MAY VARY IN EACH GRAPH TO ENABLE TREND COMPARISON.
Black line is 7 day moving average adjusted for bank holidays.
Black dotted line is baseline.

Whooping cough

Figure 16: Daily incidence rate per 100,000 population (and 7-day moving average adjusted for bank holidays) for whooping cough GP in hours consultations, England (a) nationally, (b) by age and (c) by UKHSA Region.



(c) GP in-hours (combined): whooping cough by UKHSA region 30/06/2023 to 28/06/2024

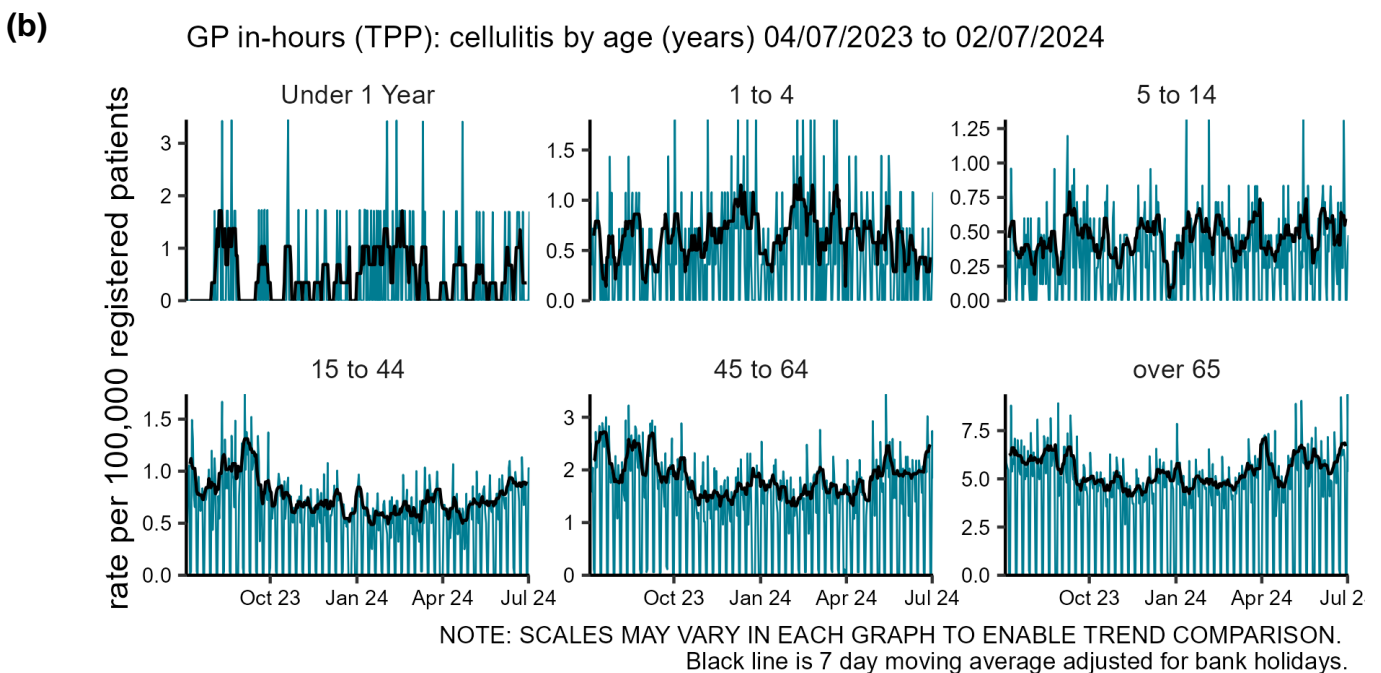
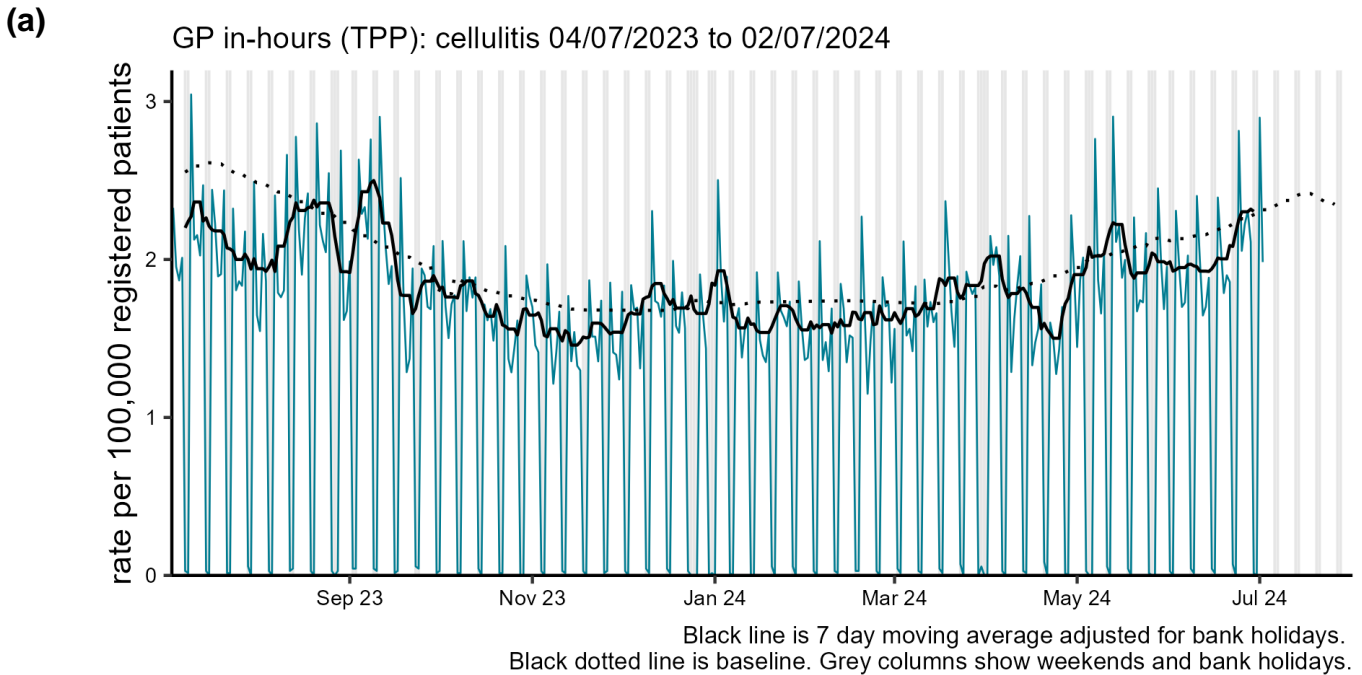


NOTE: SCALES MAY VARY IN EACH GRAPH TO ENABLE TREND COMPARISON.
Black line is 7 day moving average adjusted for bank holidays.
Black dotted line is baseline.

Skin conditions

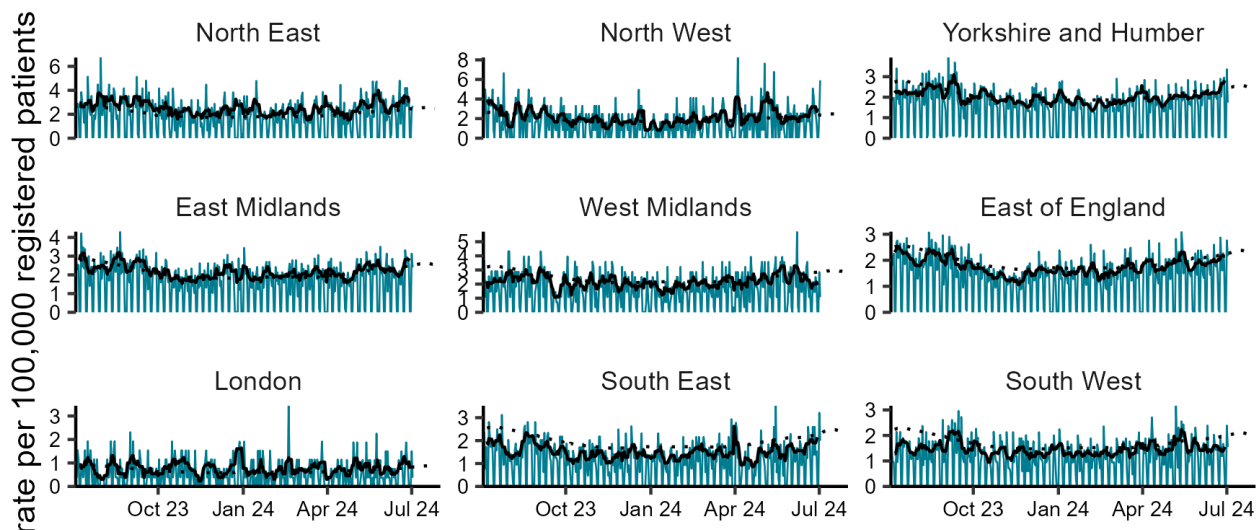
Cellulitis

Figure 17: Daily incidence rate per 100,000 population (and 7-day moving average adjusted for bank holidays) for cellulitis GP in hours consultations, England (a) nationally, (b) by age and (c) by UKHSA Region.



(c)

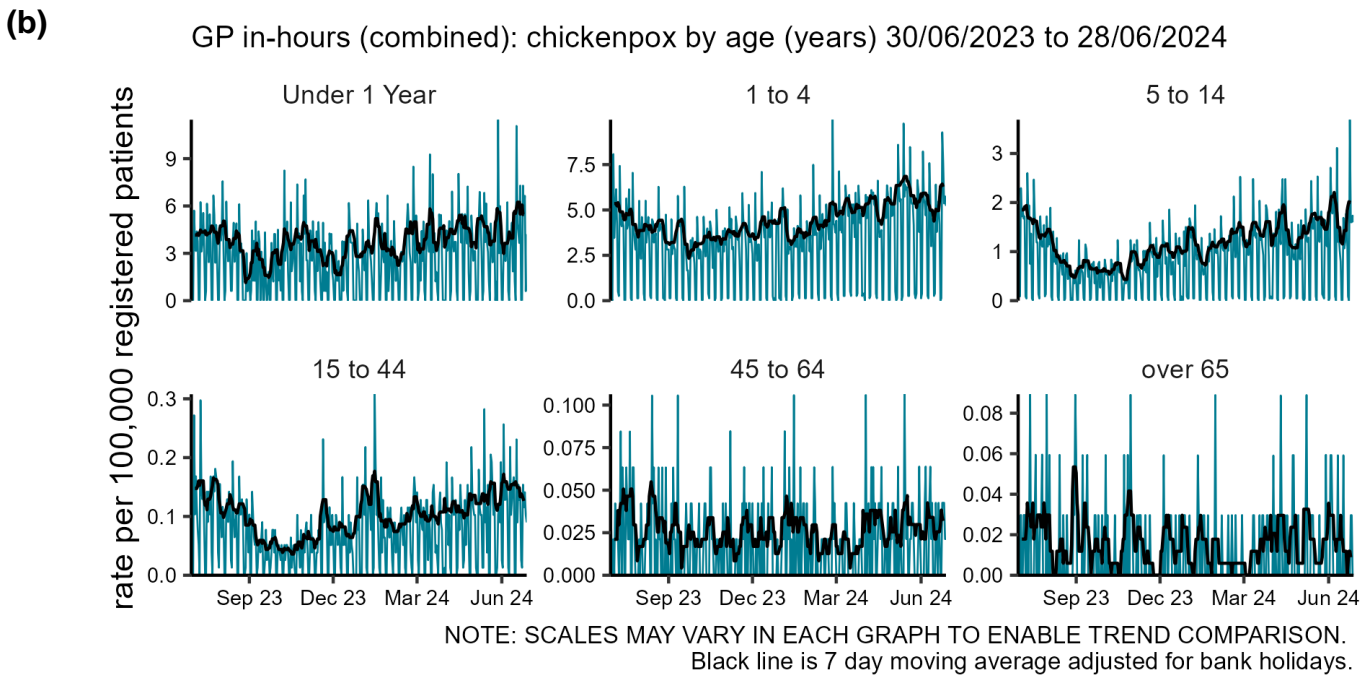
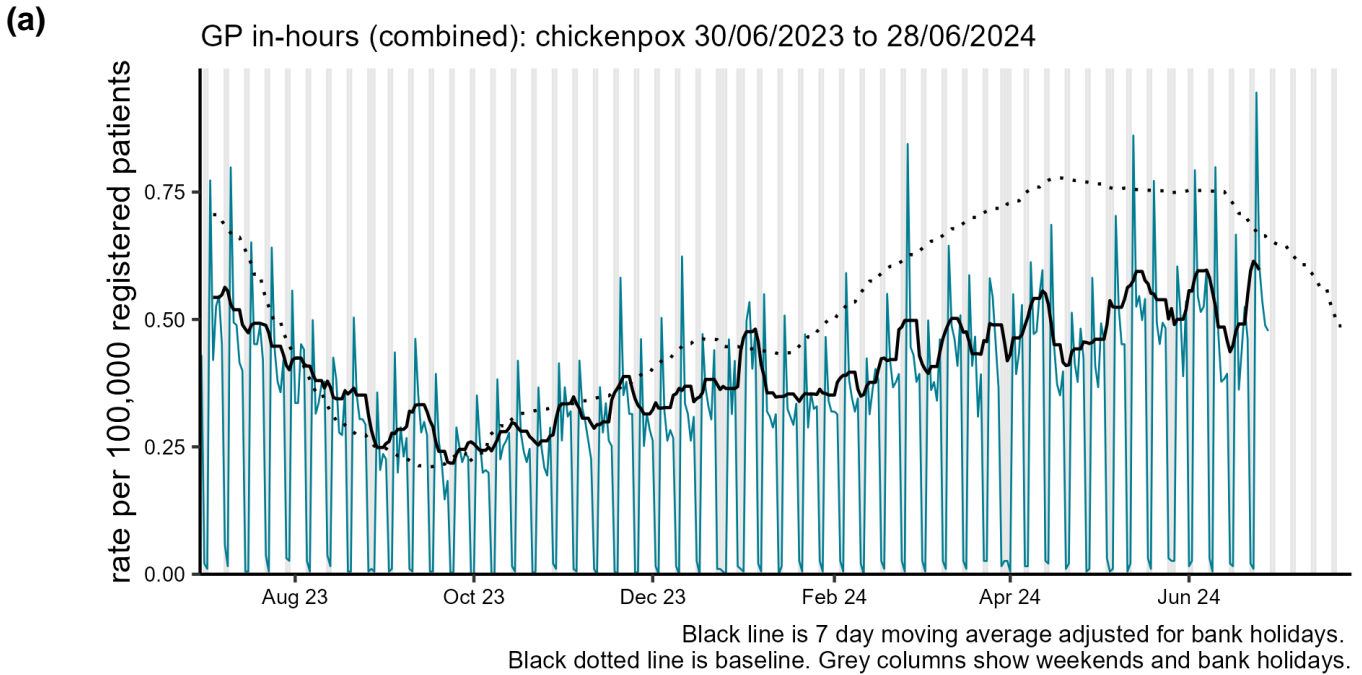
GP in-hours (TPP): cellulitis by UKHSA region 04/07/2023 to 02/07/2024



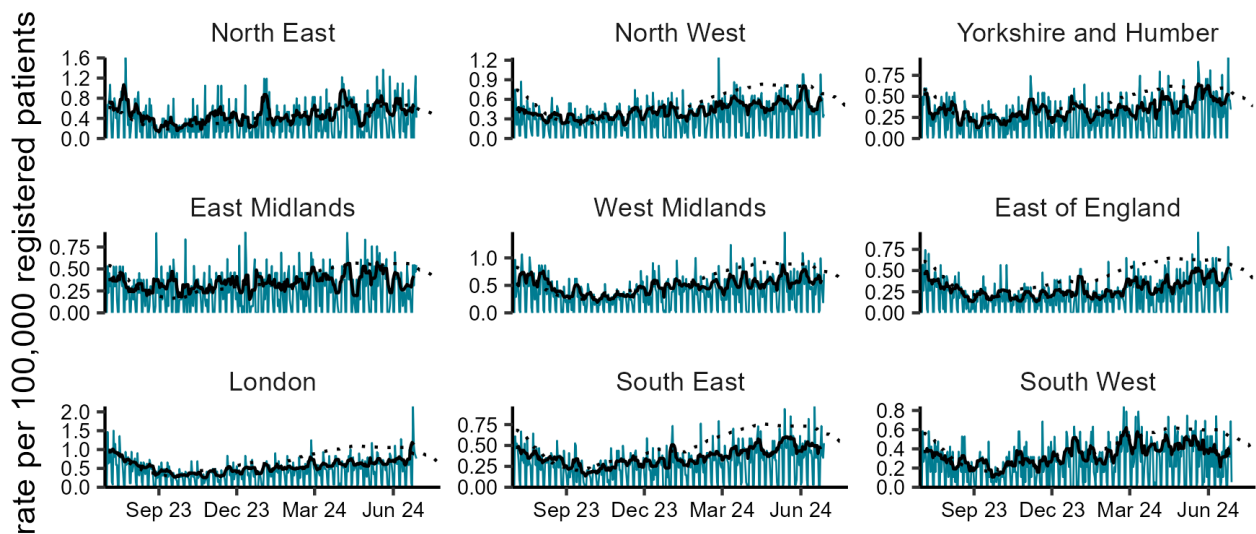
NOTE: SCALES MAY VARY IN EACH GRAPH TO ENABLE TREND COMPARISON.
Black line is 7 day moving average adjusted for bank holidays.
Black dotted line is baseline.

Chickenpox

Figure 18: Daily incidence rate per 100,000 population (and 7-day moving average adjusted for bank holidays) for chicken pox GP in hours consultations, England (a) nationally, (b) by age and (c) by UKHSA Region.



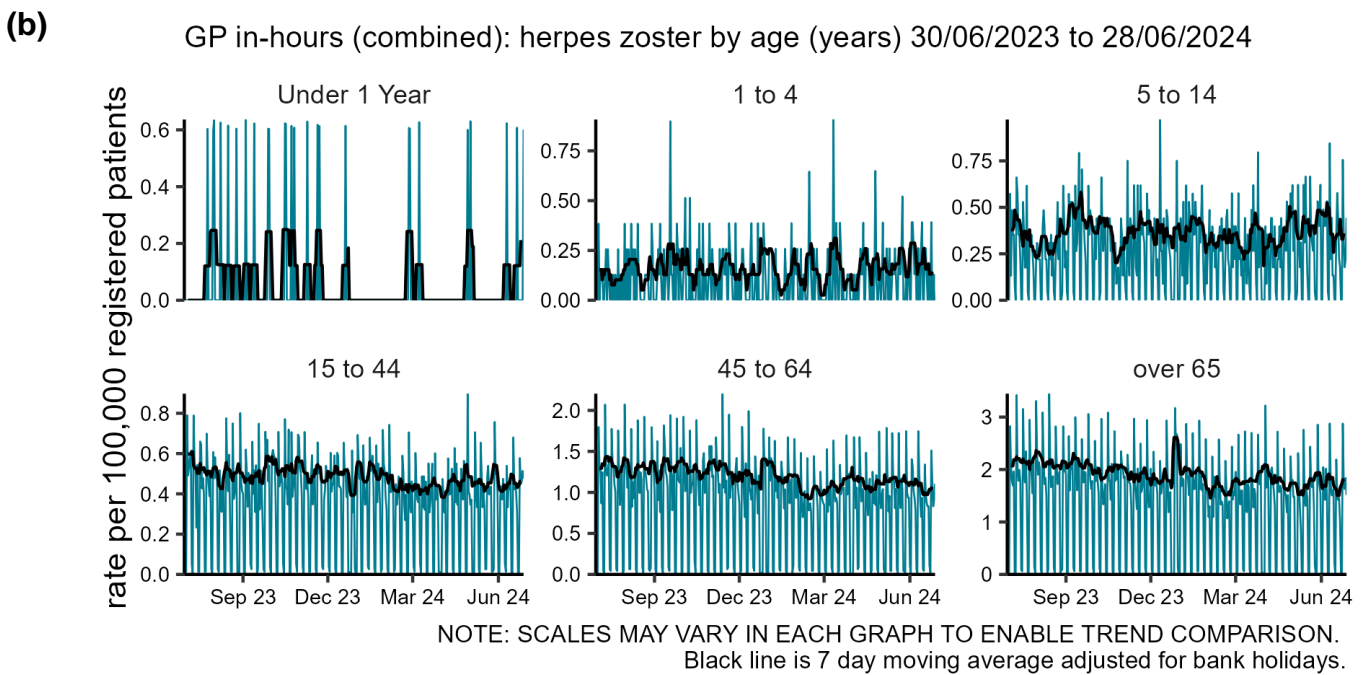
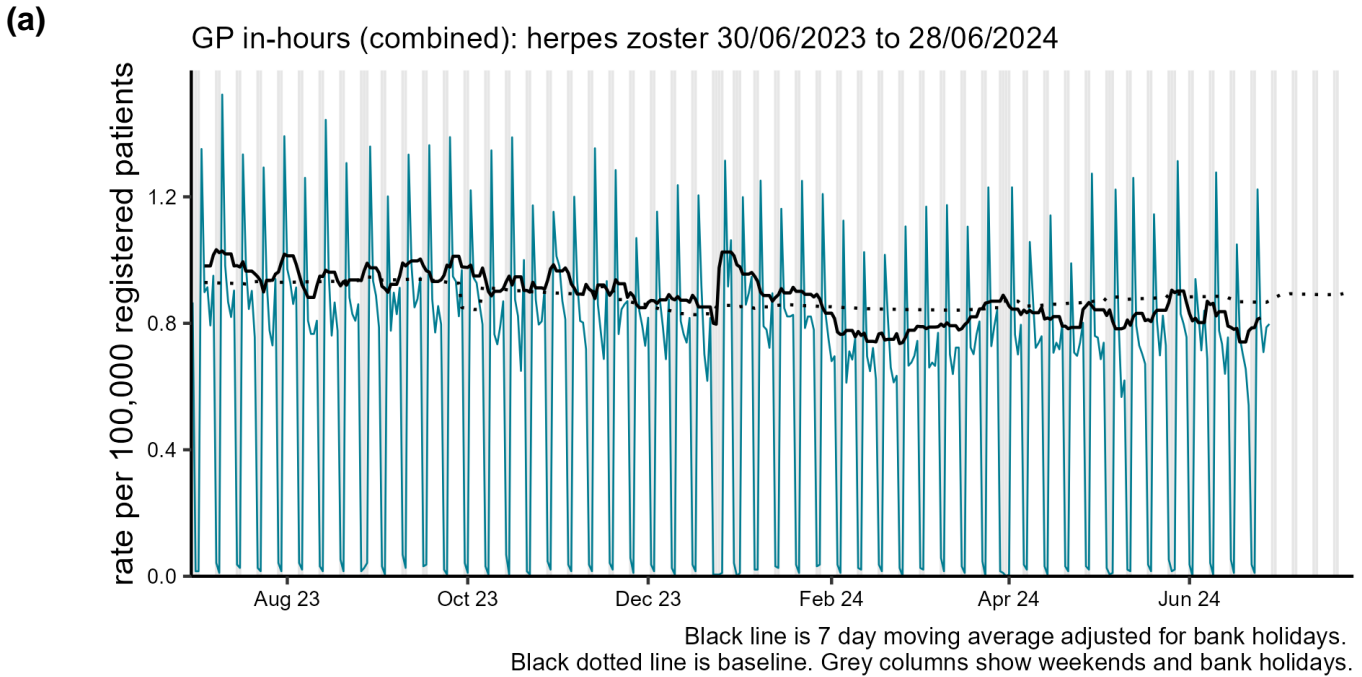
(c) GP in-hours (combined): chickenpox by UKHSA region 30/06/2023 to 28/06/2024



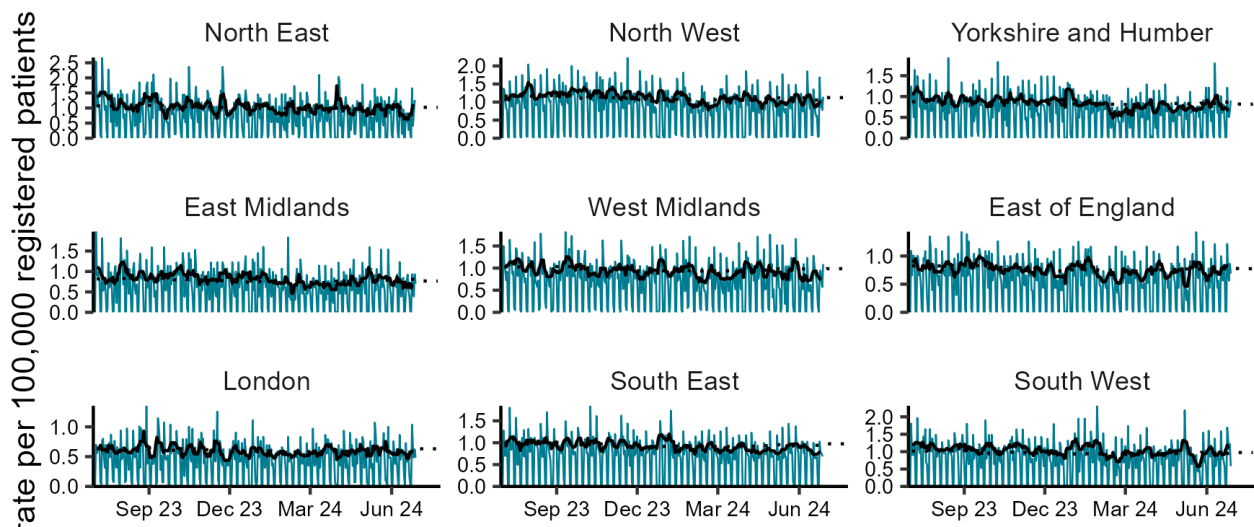
NOTE: SCALES MAY VARY IN EACH GRAPH TO ENABLE TREND COMPARISON.
Black line is 7 day moving average adjusted for bank holidays.
Black dotted line is baseline.

Herpes zoster

Figure 19: Daily incidence rate per 100,000 population (and 7-day moving average adjusted for bank holidays) for herpes zoster GP in hours consultations, England (a) nationally, (b) by age and (c) by UKHSA Region.



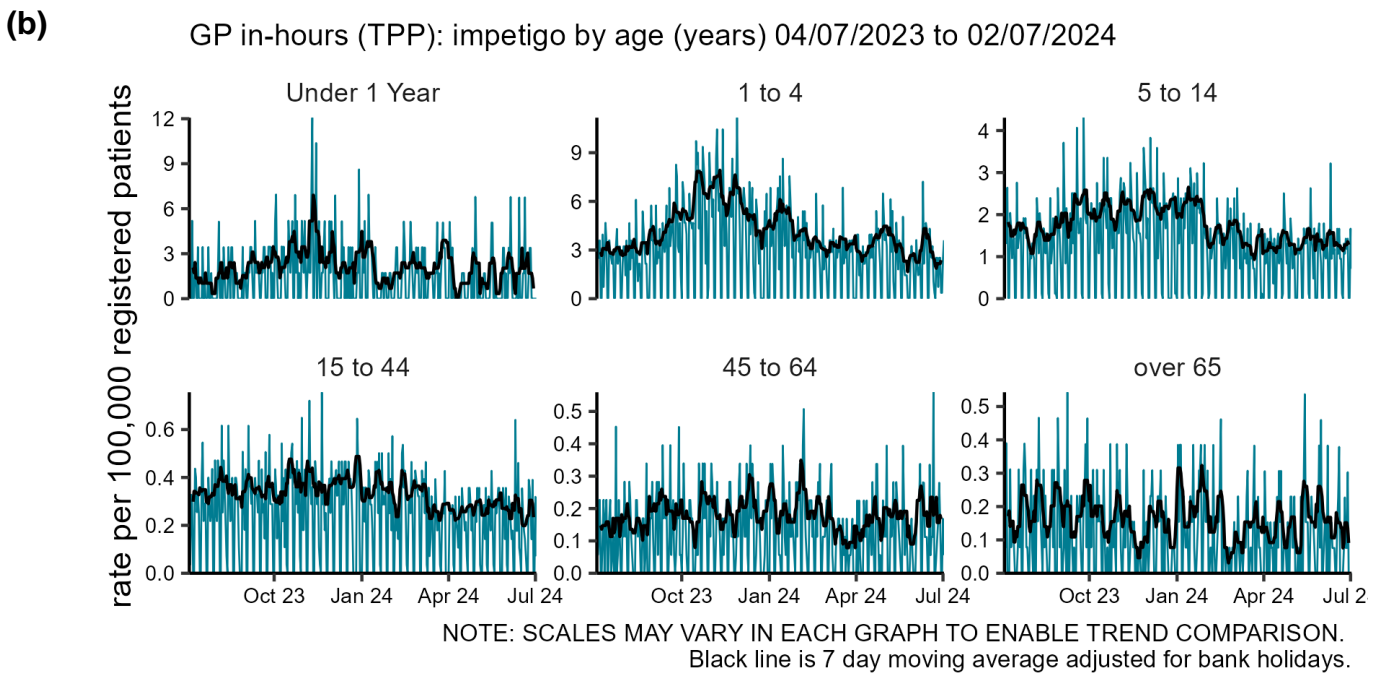
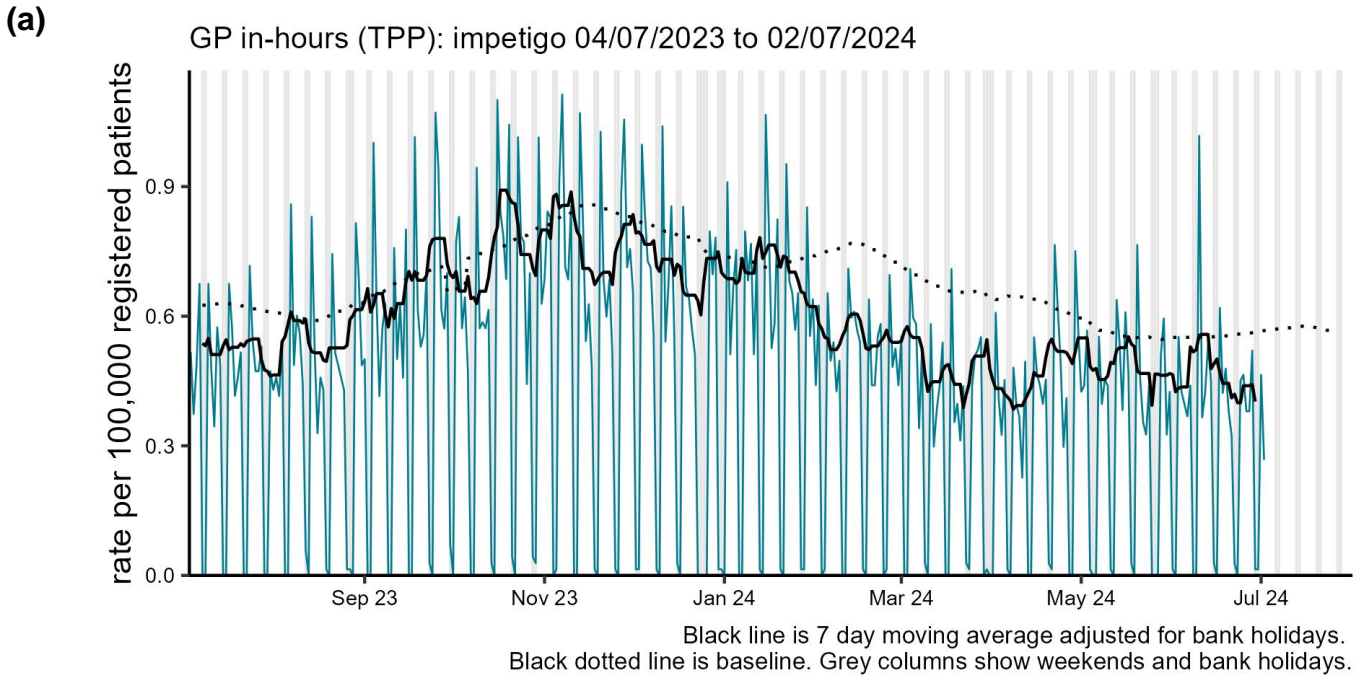
(c) GP in-hours (combined): herpes zoster by UKHSA region 30/06/2023 to 28/06/2024

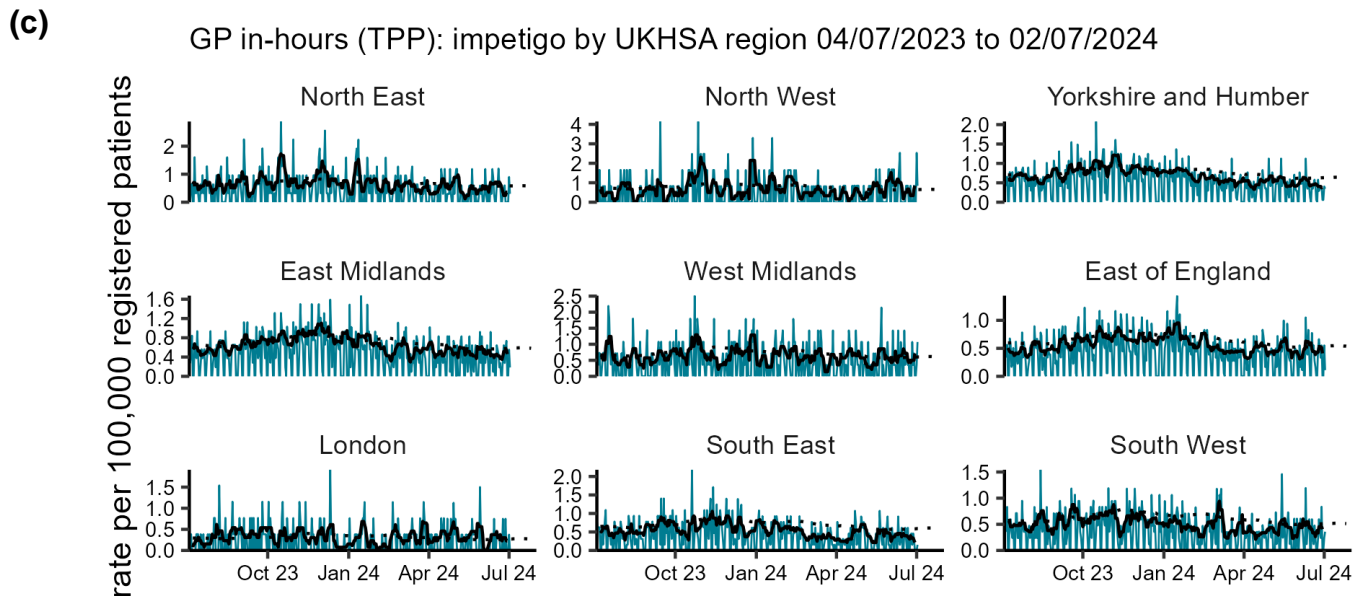


NOTE: SCALES MAY VARY IN EACH GRAPH TO ENABLE TREND COMPARISON.
Black line is 7 day moving average adjusted for bank holidays.
Black dotted line is baseline.

Impetigo

Figure 20: Daily incidence rate per 100,000 population (and 7-day moving average adjusted for bank holidays) for impetigo GP in hours consultations, England (a) nationally, (b) by age and (c) by UKHSA Region.





Seasonal environmental conditions

UKHSA and the Met Office operate a weather-health alert system that includes both heat and cold weather alert periods. Syndromic indicators are used to monitor the impact of both extreme hot and cold weather in England during these periods and will be included below (where an appropriate syndromic indicator is available).

[Cold weather alert](#) period: 1 November to 31 March

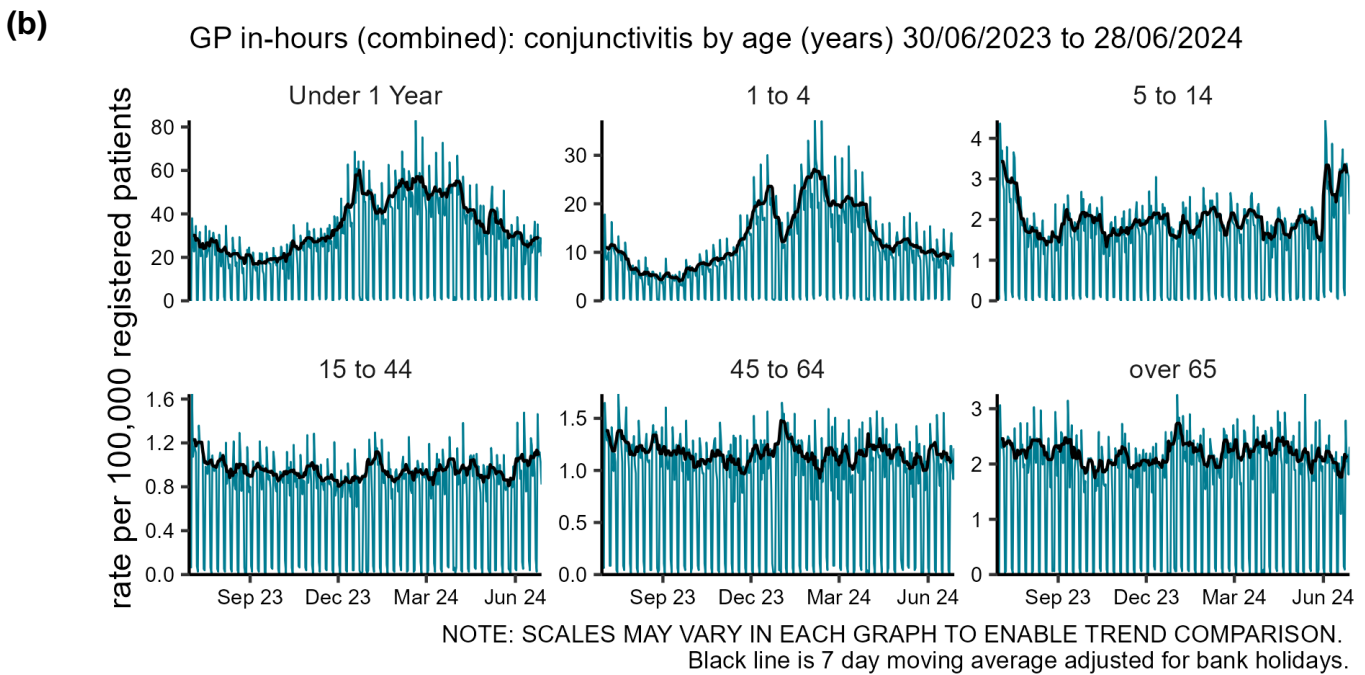
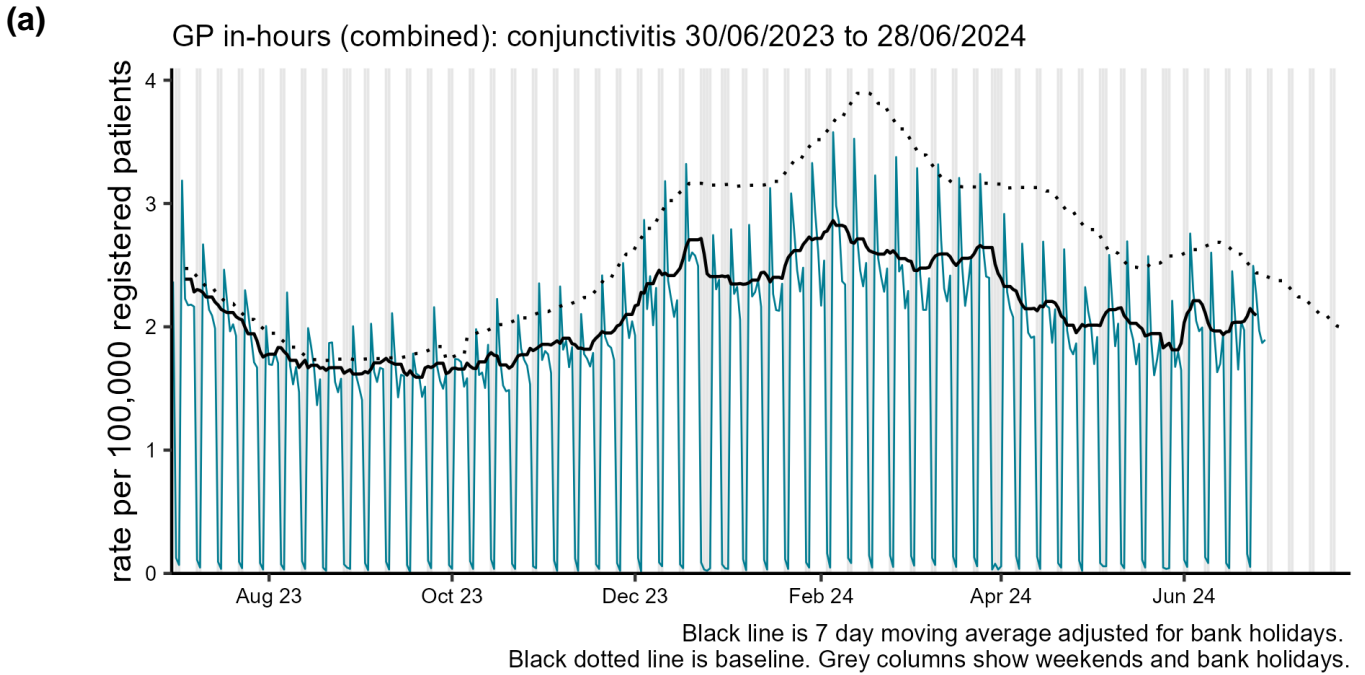
[Heat-Health Alert](#) period: 1 June to 30 September

Highest weather alert level during the current reporting week:

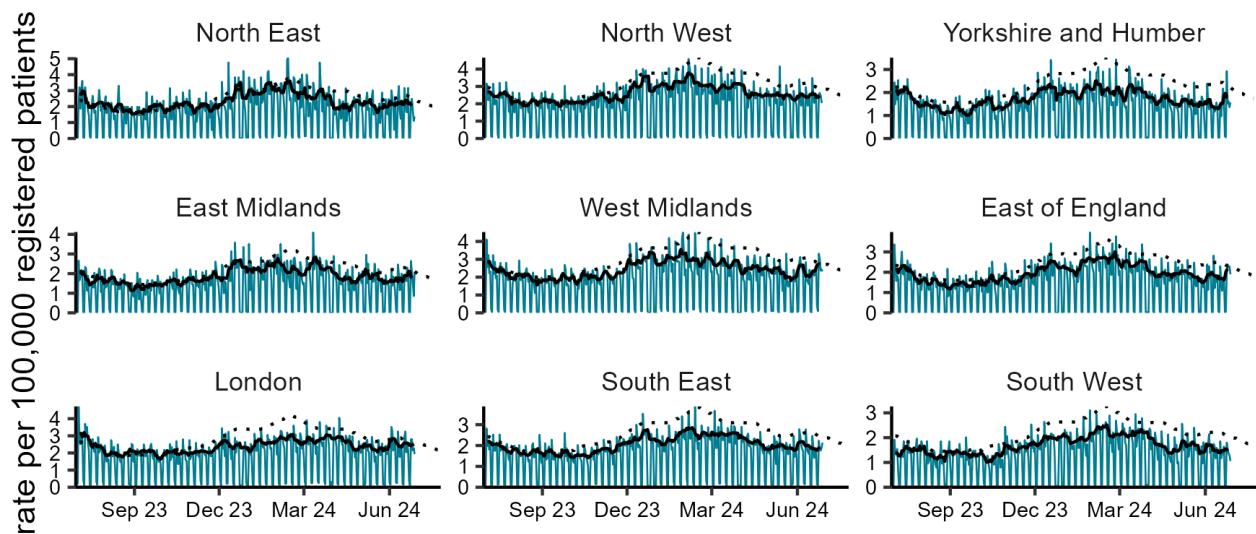
Yellow alert (hot weather response).

Conjunctivitis

Figure 21: Daily incidence rate per 100,000 population (and 7-day moving average adjusted for bank holidays) for conjunctivitis GP in hours consultations, England (a) nationally, (b) by age and (c) by UKHSA Region.



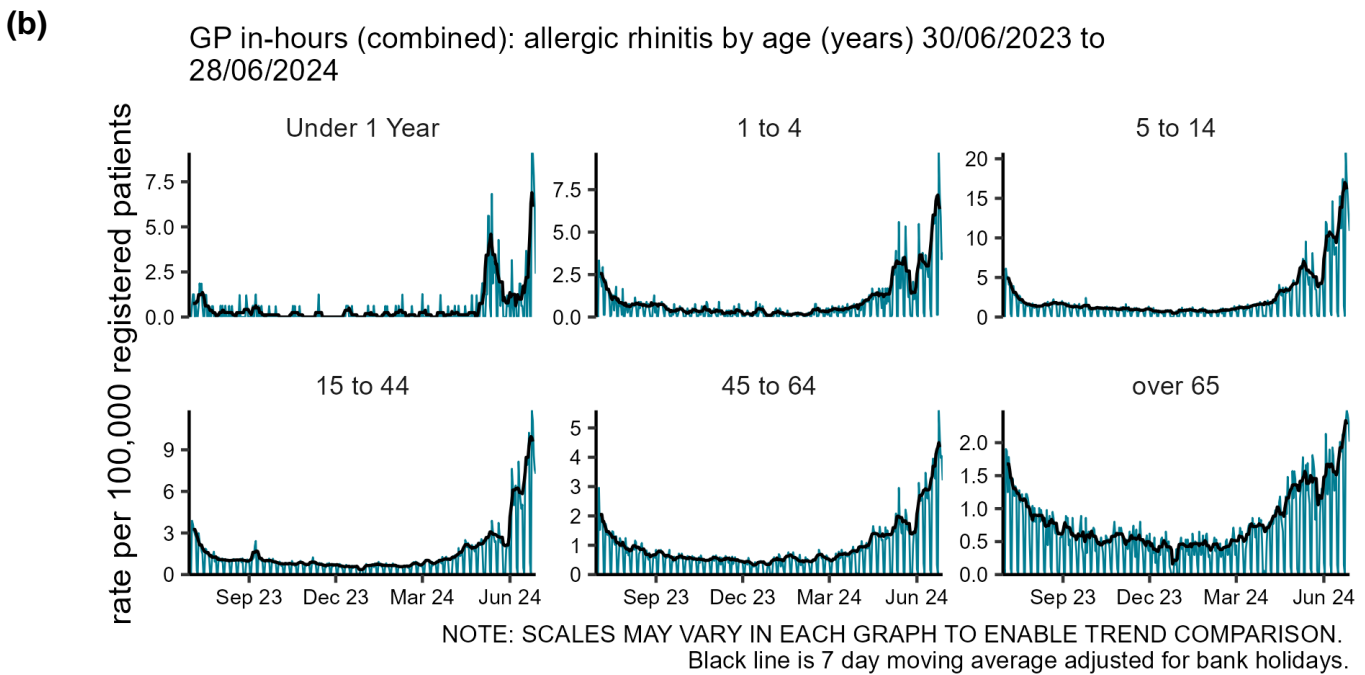
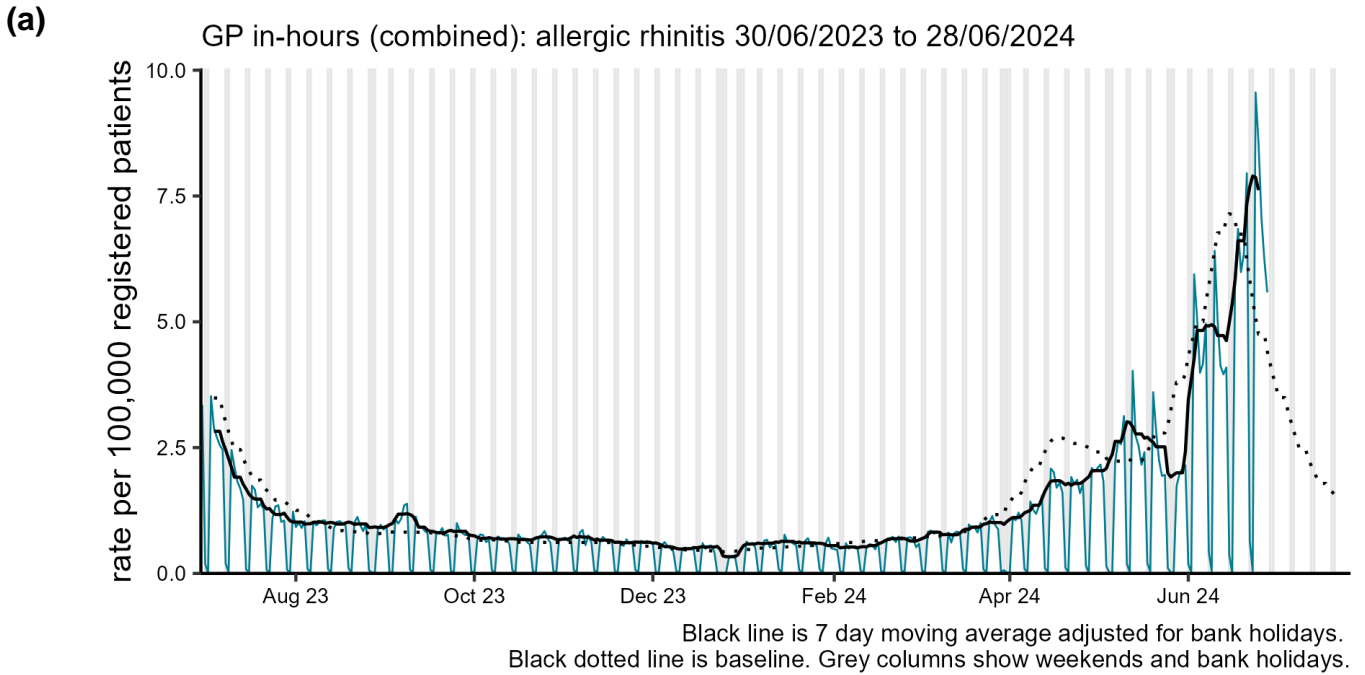
(c) GP in-hours (combined): conjunctivitis by UKHSA region 30/06/2023 to 28/06/2024



NOTE: SCALES MAY VARY IN EACH GRAPH TO ENABLE TREND COMPARISON.
Black line is 7 day moving average adjusted for bank holidays.
Black dotted line is baseline.

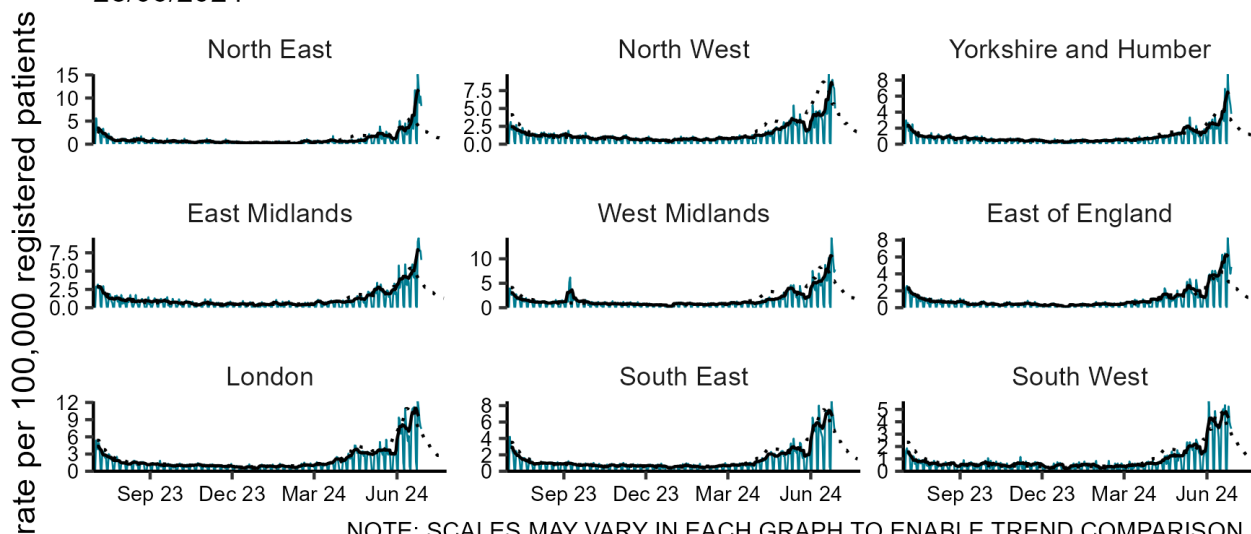
Allergic rhinitis

Figure 22: Daily incidence rate per 100,000 population (and 7-day moving average adjusted for bank holidays) for allergic rhinitis GP in hours consultations, England (a) nationally, (b) by age and (c) by UKHSA Region.



(c)

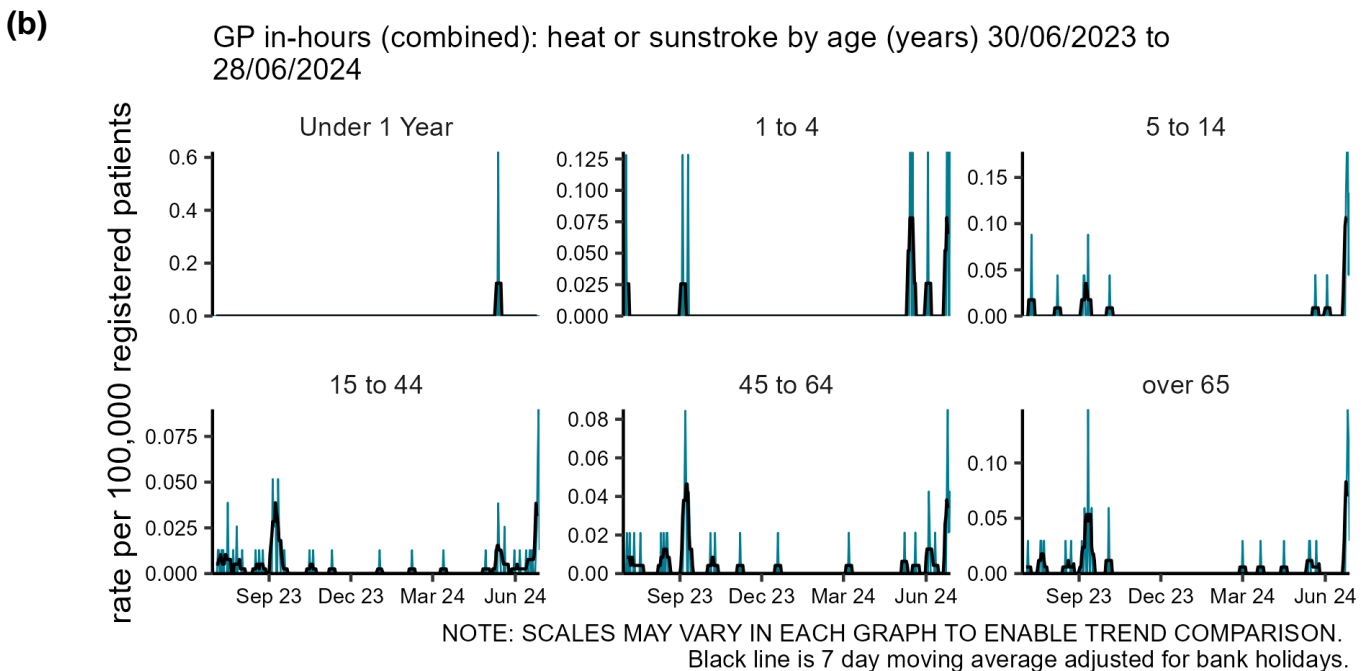
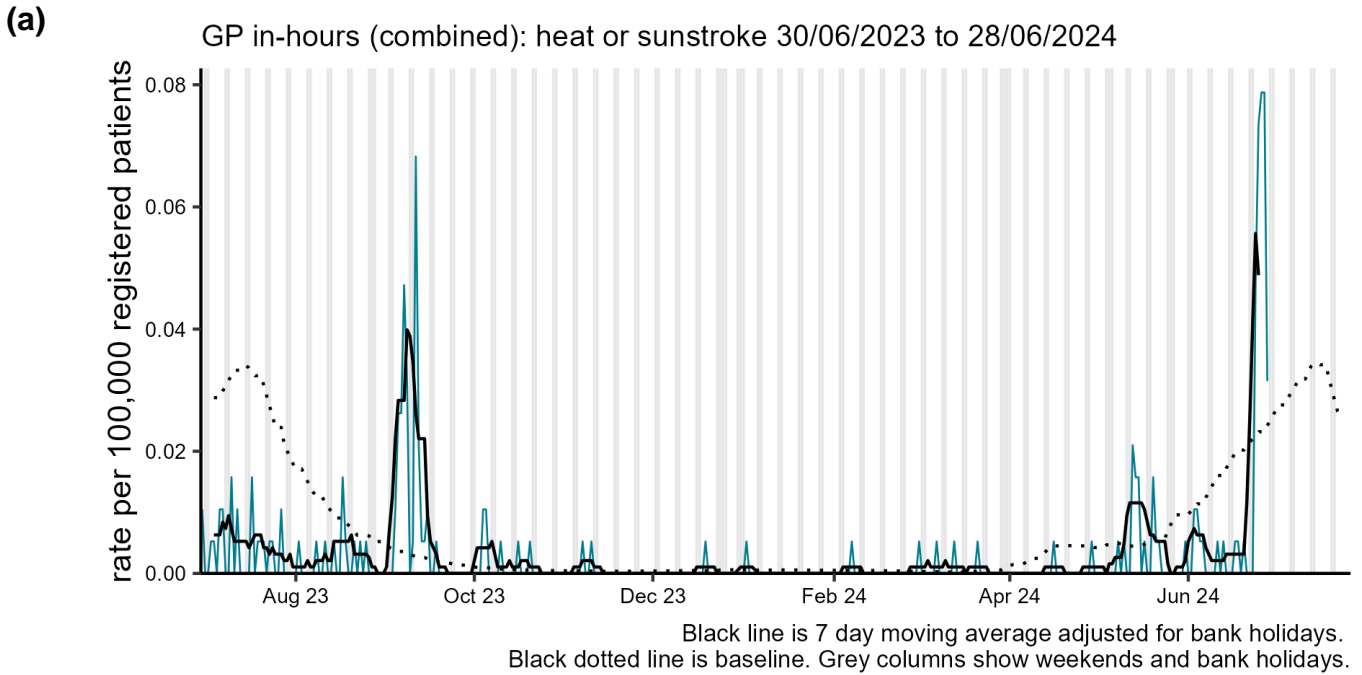
GP in-hours (combined): allergic rhinitis by UKHSA region 30/06/2023 to 28/06/2024



NOTE: SCALES MAY VARY IN EACH GRAPH TO ENABLE TREND COMPARISON.
Black line is 7 day moving average adjusted for bank holidays.
Black dotted line is baseline.

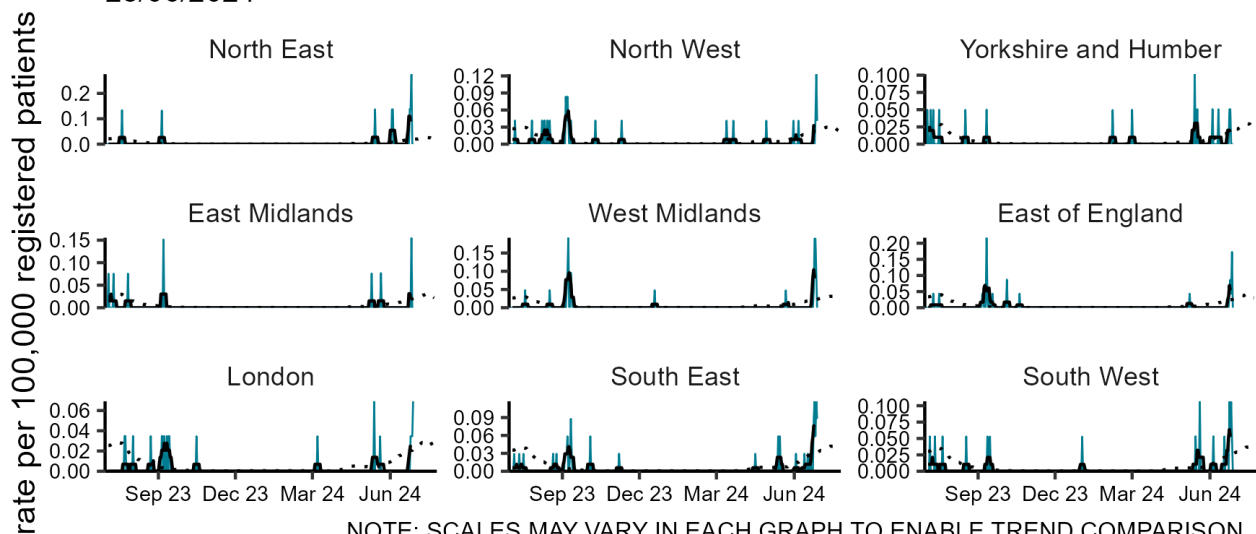
Heat or sunstroke

Figure 23: Daily incidence rate per 100,000 population (and 7-day moving average adjusted for bank holidays) for heat or sunstroke GP in hours consultations, England (a) nationally, (b) by age and (c) by UKHSA Region.



(c)

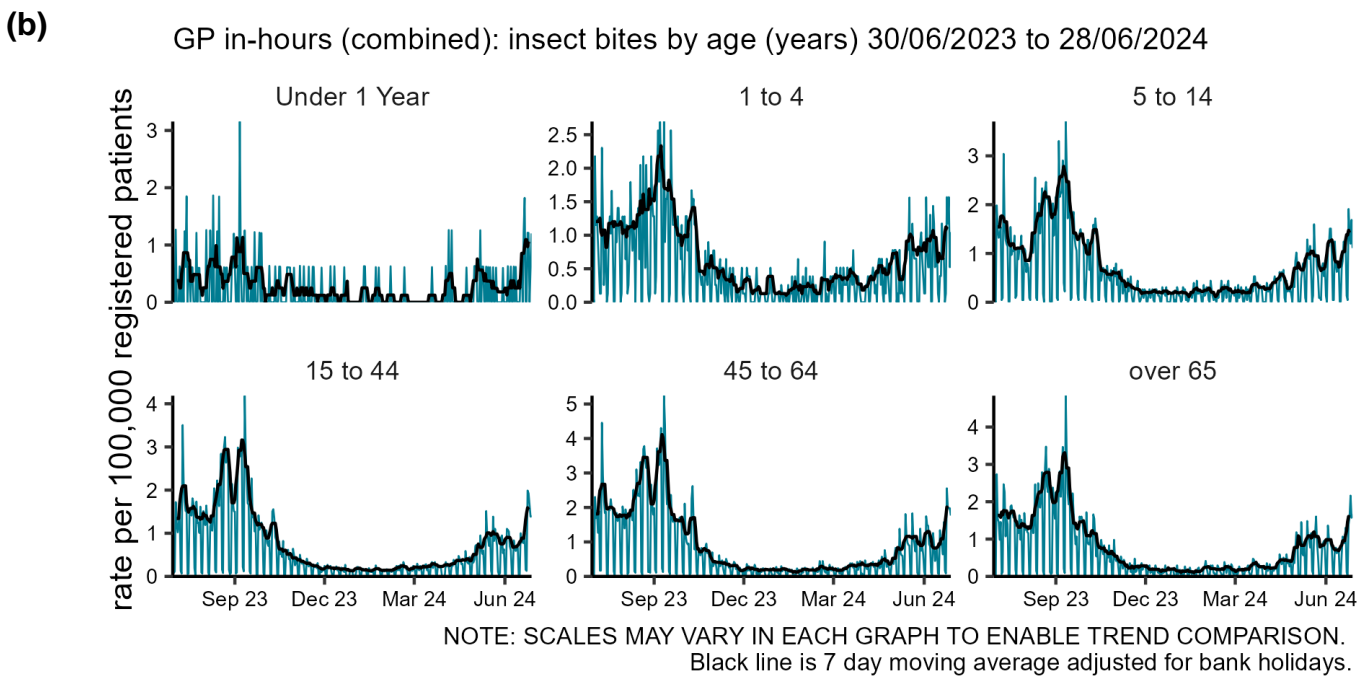
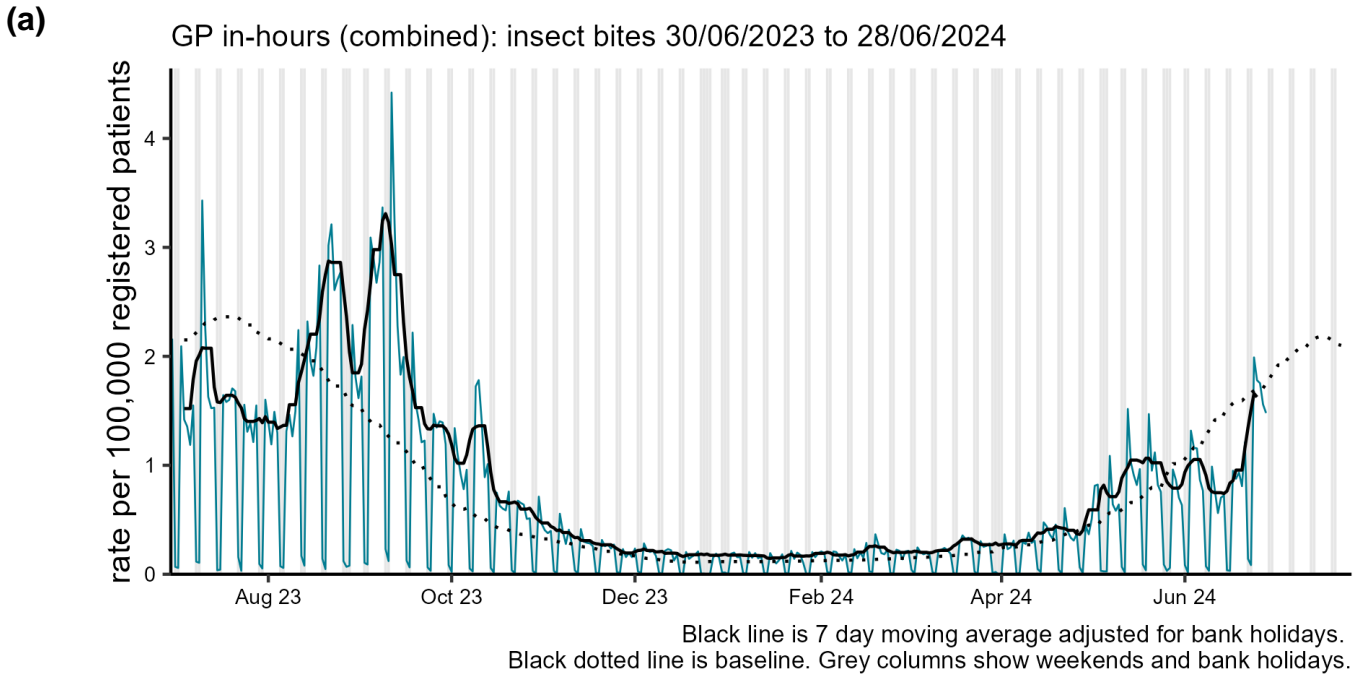
GP in-hours (combined): heat or sunstroke by UKHSA region 30/06/2023 to 28/06/2024



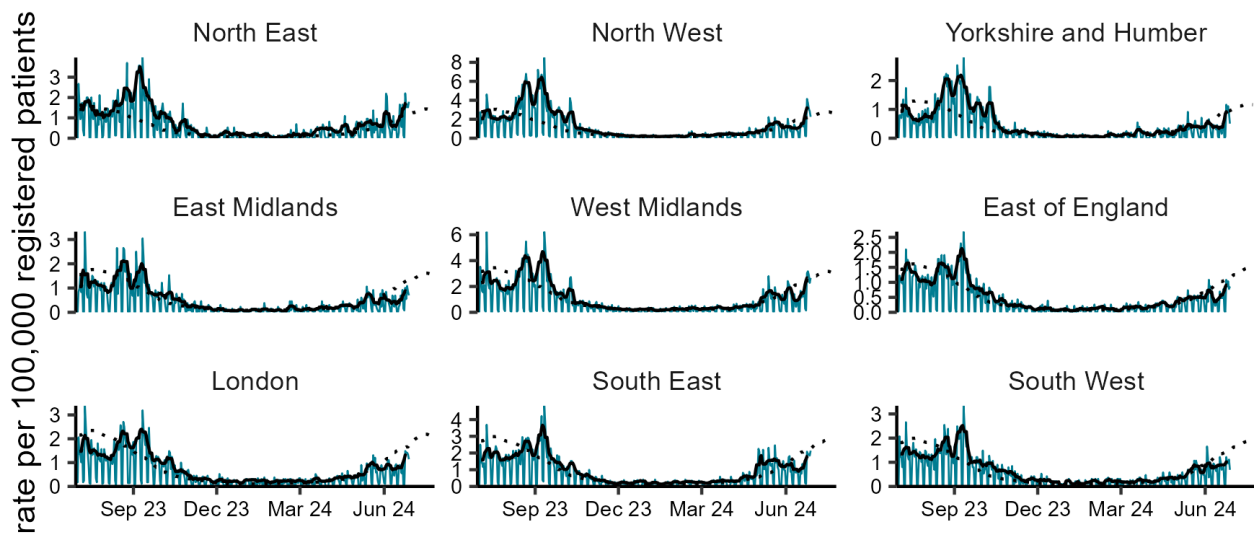
NOTE: SCALES MAY VARY IN EACH GRAPH TO ENABLE TREND COMPARISON.
Black line is 7 day moving average adjusted for bank holidays.
Black dotted line is baseline.

Insect bites

Figure 24: Daily incidence rate per 100,000 population (and 7-day moving average adjusted for bank holidays) for insect bites GP in hours consultations, England (a) nationally, (b) by age and (c) by UKHSA Region.



(c) GP in-hours (combined): insect bites by UKHSA region 30/06/2023 to 28/06/2024



NOTE: SCALES MAY VARY IN EACH GRAPH TO ENABLE TREND COMPARISON.
Black line is 7 day moving average adjusted for bank holidays.
Black dotted line is baseline.

Notes and caveats

The following additional caveats apply to the UKHSA GP in hours syndromic surveillance system:

- all syndromic trends should be interpreted with caution due to changes in national advice and guidance regarding access to health care services as well as updates and changes to service provision during the COVID-19 pandemic
- the data presented are based on a sentinel syndromic surveillance system:
 - not all GP practices in England are included
 - data is included from two sources, TPP and ORCHID (Oxford and Royal College of General Practitioners Clinical Informatics Digital Hub)
 - national coverage each week is included in **Table 2**
 - coverage varies by location
 - Data from ORCHID is currently only available for inclusion in this bulletin up to Friday each week, so all charts that contain ORCHID data do not include the most recent weekend
- some syndromic indicators are hierarchical:
 - upper respiratory tract infections includes:
 - influenza-like illness
 - pharyngitis
 - other and non-specific upper respiratory tract infections
 - lower respiratory tract infections includes:
 - pneumonia
 - bronchiolitis
 - acute bronchitis
 - other and non-specific lower respiratory tract infections
 - gastroenteritis includes:
 - diarrhoea
 - vomiting
 - other and non-specific gastroenteritis
- baselines:
 - were last remodelled May 2023 for TPP and July 2023 for ORCHID
 - are constructed from historical data since August 2016
 - represent seasonally expected levels of activity
 - take account of any known substantial changes in data collection, population coverage or reporting practices:
 - the COVID-19 pandemic period is excluded
 - the scarlet fever baselines were re-modelled prior to week 23 2024. The period of exceptional activity between 20th Nov 2022 and 2nd Feb 2023 was excluded from the training data.

COVID-19 syndromic surveillance

- the COVID-19-like syndromic indicator is based on diagnoses recorded using the COVID-19 Snomed codes released in March 2020:
 - these data are based on COVID-19-like symptoms reported and are not based on outcomes of tests for coronavirus
 - patients presenting with COVID-19 symptoms may be diagnosed using other clinical codes used by the GP, so the COVID-19-like syndromic indicator should be interpreted in context with the other respiratory syndromic indicators presented in this report
 - the rate of COVID-19-like consultations should not be used to estimate an absolute count of patients with COVID-19

Acknowledgements

We thank TPP, ResearchOne and the SystemOne GP practices contributing to this surveillance system.

Thanks to the Oxford-Royal College of General Practitioners Clinical Informatics Digital Hub (ORCHID), and to its Syndromic Surveillance General Practices (SSGP) and their patients who share data with this surveillance system, and also to EMIS for facilitating pseudonymised data access.

About the UK Health Security Agency

UKHSA is responsible for protecting every member of every community from the impact of infectious diseases, chemical, biological, radiological and nuclear incidents and other health threats. We provide intellectual, scientific and operational leadership at national and local level, as well as on the global stage, to make the nation health secure.

[UKHSA](#) is an executive agency, sponsored by the [Department of Health and Social Care](#).

www.gov.uk/government/organisations/uk-health-security-agency

© Crown copyright 2024
Version: IH-2

Prepared by: Real-time Syndromic Surveillance Team
For queries relating to this document, please contact: syndromic.surveillan@ukhsa.gov.uk

Published: July 2024



You may re-use this information (excluding logos) free of charge in any format or medium, under the terms of the Open Government Licence v3.0. To view this licence, visit [OGL](#). Where we have identified any third party copyright information you will need to obtain permission from the copyright holders concerned.



UKHSA supports the UN
Sustainable Development Goals

