



Department
for Education

Qualification achievement rates: apprenticeships specification 2023 to 2024

Version 1.0

July 2024

Contents

Summary	3
Understanding the terminology	3
Changes from the 2022 to 2023 technical specification	3
Apprenticeships QAR methodology	5
Identifying apprenticeship aims	6
Exclusions from apprenticeships QARs	7
Processing standard files	10
Process flow diagram	10
Matching programme aims across years	11
Processing learner reference number changes	12
Identifying overdue aims and planned breaks	13
Calculating Qualification Achievement, Pass and Retention Rates	15
Further Information	16
Calculating the hybrid end year	17
Step 1	17
Step 2	19
Further examples	20
Contents of the QAR dataset	21

Summary

This document provides technical information that explains how we process information provided in the Individualised Learner Record (ILR) data collection to produce the Qualification Achievement Rates (QAR) dataset.

This dataset produces the apprenticeship 2023 to 2024 QAR products. This document also provides information about how we generate the information in the QAR dashboard.

Please read this document alongside the [ILR standard file specifications and reference data documents](#) and the relevant QAR business rules, technical specifications, National Achievement Rate tables and guidance on links available from the [Introduction to Qualification Achievement Rates page](#).

Understanding the terminology

The term 'we' or 'us' refers to the 'Department for Education' (DfE) or 'Education and 'Skills Funding Agency' (ESFA), an executive agency sponsored by the Department for Education (DfE) and associated staff.

When we refer to 'you' or 'providers', this includes colleges, training organisations, local authorities and employers that report all standards and frameworks recorded in the ILR through Funding models 35 ('Adult Skills'), 36 ('Apprenticeships') and 81 ('Other Adult').

Unless otherwise stated, we refer to apprenticeship frameworks and standards in this document as an 'apprenticeship'.

Changes from the 2022 to 2023 technical specification

In the QAR achievement, pass and retention rate calculations section, calculations on pass and retention rates for apprenticeships are now included.

Changes to the contents of the QAR dataset:

- The following fields have been removed:
 - Plan_Break_Timely_Excl
- The following data item titles have been updated to correctly match data extracts:
 - AchDate to Learning_Achievement_Date
 - Age_Band to Age_Group
 - D_AgeAimStart to Age_Aim_Start
 - Datasource to Data_Source
 - DelLocPostCode to Delivery_Location_Postcode
 - DelLocPostCode_GOR to Delivery_Region
 - DelLocPostCode_LocalAuthority to Delivery_LA

- FworkCode to Framework_Code
 - FworkName to Framework_Name
 - L_PriorPcode to tLearner_Home_Postcode
 - L_PriorPcode_GOR to Learner_Home_Region
 - L_PriorPcode_LocalAuthority to Learner_Home_LA
 - LearnActEndDate to Learning_Actual_End_Date
 - LearnPlanEndDate to Learning_Planned_End_Date
 - LearnRefNumber to Learner_Reference
 - LearnStartDate to Learning_Start_Date
 - LLDDHealthProb to Learning_Difficulties
 - Orig_Learn_Start_Date to Original_Learning_Start_Date
 - Outcome to Learning_Outcome
 - PathwayCode to Pathway_Code
 - PathwayName to Pathway_Name
 - ProgType to Programme_Type
 - SectorSubjectAreaTier1 to Sector_Subject_Area_Tier_1
 - SectorSubjectAreaTier2 to Sector_Subject_Area_Tier_2
 - StdCode to Standard_Code
 - StdName to Standard_Description
 - Year to Academic_Year
 - YearAimSubmitted to Year_Aim_Submitted
 - Overall_Achiever to Achiever
 - Overall_Leaver to Leaver
 - Overall_Completer to Completer
 - Plan_Break_Overall_Excl to Plan_Break_Excl
 - QAR_Status_Overall to QAR_Status
 - Transfer_Overall_Excl to Transfer_Excl
- The following fields have been added:
 - SR_Snapshot_Id
- The source titles of the following data item titles have been updated:
 - Framework_Name
 - Pathway_Name
 - Standard_Description
- The derivation titles of the following data item titles have been updated:
 - Framework_Code
 - Framework_Name
 - Pathway_Code
 - Pathway_Name
 - Standard_Code
 - Standard_Description

Apprenticeships QAR methodology

We base the QAR on the hybrid end year, which is the later of:

- The achievement year of an apprenticeship
- the actual end year of an apprenticeship
- the planned end year of an apprenticeship
- the reporting year

We only use the achievement year for apprenticeship standards on funding model 36. In addition, we include the reporting year to capture those overdue continuing learning aims, overdue planned breaks or late completions recorded in the following funding year (up to R04). See [calculating the hybrid end year](#) for further details on how we calculate the hybrid end year.

For standards with an actual end year of 2019 (the academic year AchDate was introduced for standards), we do not use the achievement year to calculate the Hybrid End Year, this is to account for the crossover between academic years.

The apprenticeships included in the 2023 to 2024 QAR are those with a hybrid end year of 2023 to 2024.

There can be a delay between completing an apprenticeship and the notification of the achievement. To account for this delay and to ensure all relevant leavers are included, we use information from the 2024 to 2025 R04 ILR to identify apprenticeships with a planned end date in 2023 to 2024. If you update records in your 2024 to 2025 R04 return that you submitted in your 2023 to 2024 R14 return, then we will use the R04 record to determine your QAR.

The business rules available from the [Introduction to Qualification Achievement Rates page](#) describe how we calculate the QARs and which apprenticeships will not be included in the QAR calculations.

We exclude some apprenticeships from QARs to ensure the results are more credible and appropriate. The reasons include (and this is not an exhaustive list):

- if circumstances affect QARs where we have agreed an exception (for example, if the learner transferred to new provision due to intervention from us)
- if we do not fund the apprenticeship
- if the apprentice has transferred to another apprenticeship within 120 days of finishing the old apprenticeship

Identifying apprenticeship aims

We identify apprenticeship programme aims in the ILR dataset by using Aim Type is 1 (Programme aim) and Programme Type is 2, 3, 10, 20, 21, 22, 23 or 25, as set out in the ILR standard file specification document.

We use the component aims of an apprenticeship framework programme to determine whether you have subcontracted the competency aim. We add this information to the programme aim, although we exclude the component aims of the programme from the achievement rates dataset.

We identify the component aims of an apprenticeship in the ILR dataset by using “Aim Type” is 3 (component aim) and “Programme Type” is 2, 3, 10, 20, 21, 22, 23 or 25, as set out in the ILR standard file specification document.

Exclusions from apprenticeships QARs

The table below describes the scenarios where we exclude apprenticeships. The definition of the derived variables below are in [ILR standard file specifications and reference data documents](#).

Description	Rules for identifying the excluded apprenticeship
An apprentice has transferred to a new provider because of intervention from us.	Programme aims where Withdrawal Reason is 7 (Learner has transferred to a new provider forced by ESFA intervention or to support a specific government strategy) and Withdrawal Reason is not 41 (Transfer to another provider to undertake learning that meets a specific government strategy).
An apprentice has transferred to a new provider due to college merger.	Programme aims where Withdrawal Reason is 47 (Learner has transferred to another provider due to college merger), and the Learning Actual End Date is less than the Learning Start Date on the new UK Provider Reference Number (UKPRN) (matching on Unique Learning Number). The Learning Start Date on the new UKPRN must be within 30 days or less than the Learning Actual End Date on the original UKPRN.
Where an apprentice has transferred to a different apprenticeship with the same provider.	Programme aims where Completion Status is 3 (The Learner has withdrawn from the learning activities leading to the learning aim), the Withdrawal Reason is 40 (Learner has transferred to a new learning aim with the same provider) and the Learning Actual End Date is before 1 August of the relevant year. Where an apprentice has transferred to a different apprenticeship, as above, the Learning Start Date for the new apprenticeship programme (matching on Unique Learner Number and UKPRN) must be 120 days or less than the Learning Actual End Date of the original programme. We will not exclude transfers from apprenticeships to other learning aims.
Where an apprentice has temporarily withdrawn from the apprenticeship due to an agreed break in learning.	Programme aims where Completion Status is 6 (Learner has temporarily withdrawn from the aim due to an agreed break in learning). Under certain circumstances, we do not exclude programme aims where the learner has temporarily withdrawn from the aim due to an agreed break in learning. For further detail, see identifying overdue aims and planned breaks .
Apprenticeships where the learner has withdrawn from the apprenticeship within the funding qualifying period and has not achieved the learning aim.	Programme aims where: <ul style="list-style-type: none"> • the planned duration is 168 days or more • the actual duration is less than 42 days; and • the Completion Status is 3 (Withdrawal); and • the Restart Indicator is 0 (Not a Restart)

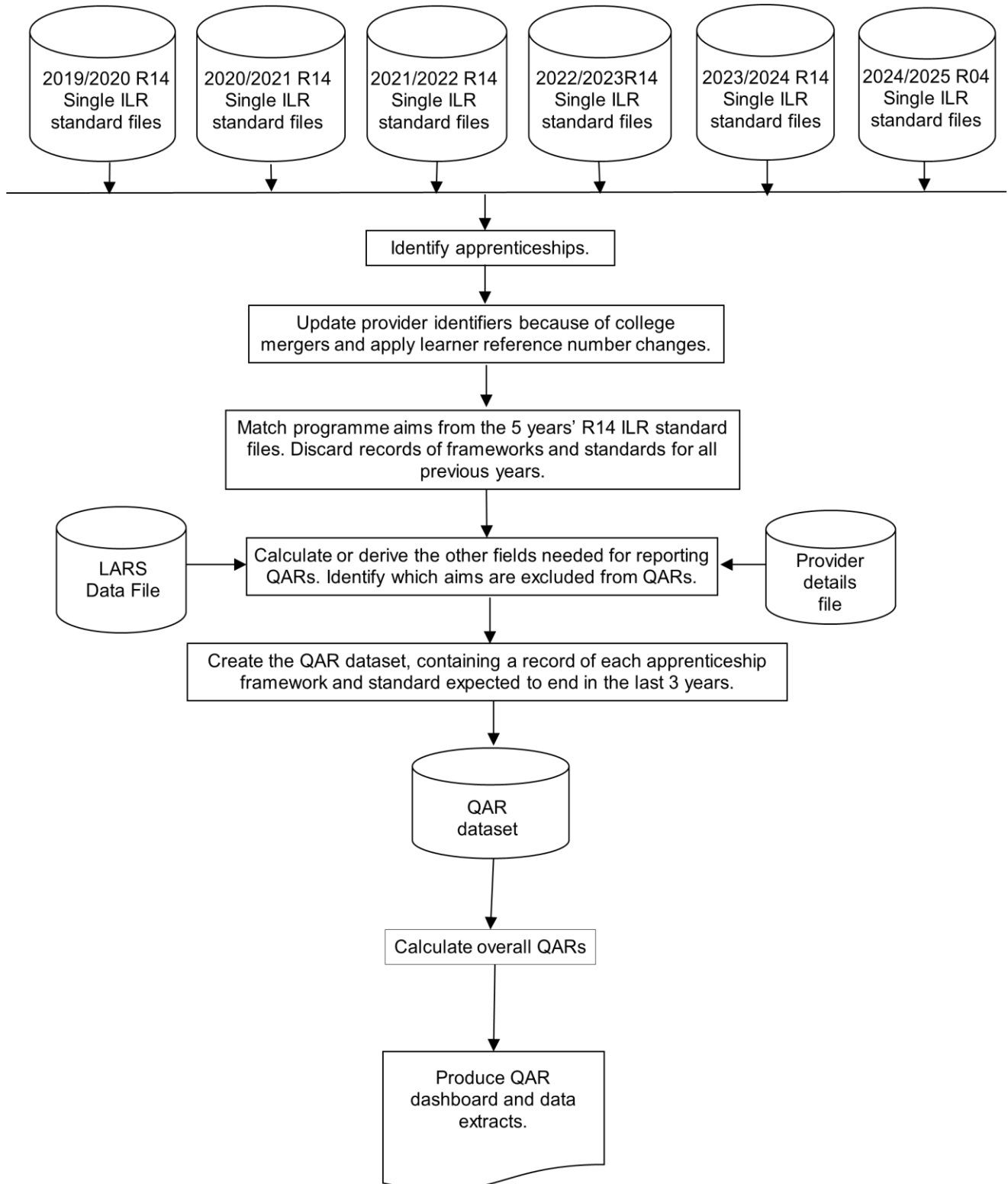
Description	Rules for identifying the excluded apprenticeship
<p>We exclude apprentices who restarted with the same provider in this exclusion rule, as the original instance of learning will have passed the funding qualifying period.</p> <p>This does not apply to trailblazer pilot standards.</p>	<p>Programme aims where:</p> <ul style="list-style-type: none"> • the planned duration is between 14 and 167 days • the actual duration is less than 14 days; and • the Completion Status is 3 (Withdrawal); and • the Restart Indicator is 0 (Not a Restart) <p>Programme aims where:</p> <ul style="list-style-type: none"> • the planned duration is 168 days or more • the actual duration is less than 42 days; and • the Completion Status is 3 (Withdrawal); and • the Restart Indicator is 1 (Restart); and <ul style="list-style-type: none"> ○ the new Learning Start Date is greater than the original Learning Actual End Date of the apprenticeship on the original UKPRN <p>Programme aims where:</p> <ul style="list-style-type: none"> • the planned duration is between 14 and 167 days • the actual duration is less than 14 days; and • the Completion Status is 3 (Withdrawal); and • the Restart Indicator is 1 (Restart); and <ul style="list-style-type: none"> ○ the new Learning Start Date is greater than the original Learning Actual End Date of the apprenticeship on the original UKPRN <p>The planned duration of the aim, in days, is the difference between the Learning Start Date and the Learning Planned End Date.</p> <p>The actual duration of the aim, in days, is the difference between the Learning Start Date and the Learning Actual End Date.</p>
<p>Apprenticeships with a planned end date after the last day of the QAR reporting period (31 July 2024).</p>	<p>Programme aims where the Learning Planned End Date is later than 31 July 2024.</p>
<p>Apprenticeships with a learning start date before the effective from date of the aim in Learning Aim Reference Service (LARS).</p> <p>This only applies to apprenticeship standards.</p>	<p>Programme aims where the Learning Start Date is earlier than the Effective From Date of the apprenticeship standard as recorded in LARS.</p>
<p>Apprenticeships that we do not fund.</p>	<p>Programme aims where the Funding Model is equal to 99 (No ESFA funding) in all years.</p> <p>We will exclude all trailblazer pilot standards without a net employer contribution payment recorded (i.e. any payments minus reimbursements). We calculate this for programme aims where the Funding model is 81 (Other Adult) and the sum of all payment records minus all reimbursement repayment records is equal to zero.</p>

Description	Rules for identifying the excluded apprenticeship
<p>Changes to records previously submitted 2 or more years ago.</p> <p>The example given is for aims reported in 2021 to 2022. The exclusion also applies to aims reported in 2020 to 2021 or 2019 to 2020 that meet the same conditions for the corresponding earlier years.</p>	<p>For aims reported in the 2021 to 2022 ILR, that were previously reported in the 2019 to 2020 ILR or earlier, and not reported in the 2020 to 2021 ILR. Where:</p> <ul style="list-style-type: none"> • the actual or planned end dates are not in 2021 to 2022 or later, • the record was first reported complete in the 2021 to 2022 ILR. The record is not an update to a learning aim, which would otherwise have been an overdue planned break, counted in the 2021 to 2022 hybrid end year. <p>This applies only to 2021 to 2022 and previous years.</p>
<p>Former Employer Ownership Pilot learning aims.</p>	<p>Programme aims where any Learning Delivery Monitoring Code is 351 (Former Employer Ownership Pilot Provision).</p>
<p>SILR exclusion.</p>	<p>Aims in the QAR business rules that do not meet the definition of an apprenticeship programme aim.</p>

Processing standard files

Process flow diagram

This flow diagram below shows how we process ILR information for multiple funding years to produce the QAR dataset, which is the source of the information used for the QAR dashboard.



Matching programme aims across years

Many apprenticeship programmes take more than one year to complete, meaning that the same programme aim for an apprentice can appear in more than one ILR file.

We use various combinations of variables to ensure we match the correct records across years. The matching records process uses the UKPRN, Unique Learner Number (ULN) (or where unable to do so the Learner Reference Number), Programme type and Framework code or Standard code together with the following combinations, in the following sequence:

- Learning start date, Learning planned end date and Learning actual end date
- Learning start date and Learning planned end date
- Learning start date and Learning actual end date
- Learning start date

We do not include apprenticeship pathway code in this combination.

Once we have matched programme aim records, we discard those from previous years, leaving just the latest information for each programme aim in the QAR dataset.

Unique Learner Number is used to match all aims except in cases where:

- There is more than one distinct Learner reference number recorded with the same Unique learner number by the same provider (same UKPRN) within a year.
- There is more than one distinct LearnRefNumber_orig recorded with the same Unique learner number by the same provider (same UKPRN) and with the same LearnAimRef, within a year.
- An aim has been submitted with the same Learner reference number and UKPRN with a ULN of 9999999999.

Processing learner reference number changes

If, for any reason, a learner's Learner reference number changes, either within a funding year or between years, then you must record this using the Learner reference number in previous year field.

We use the information in the Learner reference number in the previous year field to change the Learner reference number for previous years to the latest Learner reference number. We keep the original Learner reference number in the QAR dataset in the LearnRefNumber_Orig field.

If you do not return the Learner reference number in previous year field when there has been a change, then the process of matching aims may not work correctly. This can create 2 records in the QAR dataset for the same aim: one using the old Learner reference number and one using the new Learner reference number. Where the aim from the earlier year's ILR file does not have any achievement data, this will reduce your QAR.

If you use the Learner reference number in previous year field when there **has not** been a change in the learner's Learner reference number, then this will prevent us from correctly matching that learner's aims.

You **must** remove the data from this field between years, as detailed in the [ILR specification](#), otherwise the learners will not match correctly.

Example

Learner A has a Learner reference number of 'LNA1234' in 2021 to 2022. Due to a change in the provider's management information system, Learner A has a new Learner reference number in 2022 to 2023 of 'LRA9876'. For QARs to match correctly, you must record the references as follows:

In 2021 to 2022:

- Learner reference number = LNA1234
- Learner reference number in previous year is not returned

In 2022 to 2023:

- Learner reference number = LRA9876
- Learner reference number in previous year = LNA1234

In 2023 to 2024:

- Learner reference number = LRA9876
- Learner reference number in previous year is not returned

Identifying overdue aims and planned breaks

Continuing learning aims (with a Completion status of 1 'The learner is continuing or intending to continue the learning activities leading to the learning aim') in the R14 ILR return for a funding year that do not have a corresponding record in the following funding year, are treated as a withdrawal.

For example, if the year you submitted the record on the ILR is '2022/2023' and there is no corresponding record in 2023 to 2024 R14 ILR return:

- the hybrid end year (Hybrid_End_Year) is set to the maximum value recorded in the actual end year, planned end year and reporting year derived variables; and
- Leaver is set to 1; and
- Achiever is set to 0.

If you subsequently return the record in the ILR in any of the years after, we will exclude it from your QAR so that the same record is not counted against QARs in two different years.

Aims where the learner is on a planned break (with a Completion status of 6 'Learner has temporarily withdrawn from the aim due to an agreed break in learning'), that do not have a corresponding record in the following funding year, are treated as a withdrawal where either of these apply:

- they do not have a corresponding restart record in the same funding year
- they do not have a corresponding restart record in the following funding year
- if the planned break was last recorded in the ILR R14 return for funding year 2022 to 2023, they do not have a corresponding restart record in the R04 ILR return of the funding year 2024 to 2025.

An ILR record is a restart record if it has a Learning Delivery Funding and Monitoring Type of 'RES' with a Learning Delivery Funding and Monitoring Code of 1 (Learning aim restarted).

We match restart records to planned break records by matching on UKPRN, Learner reference number, Programme type and Framework code or Standard code where the Original learning start date on the restart record matches the Learning start date or Original learning start date of the planned break record. This allows for situations where the planned break was itself a restart.

An aim where the learner is on a planned break, for example, that is most recently submitted in the 2021 to 2022 ILR (YearAimSubmitted is '2021/22'), **has** a corresponding restart record if:

- the UKPRN, Learner reference number, Learning aim reference number, Programme type and Framework code or Standard code on the planned break record is the same as the UKPRN, Learner reference number, Programme type and Framework code or Standard code on a restart record; and
- either the Learning start date or the Original learning start date on the planned break record is the same as the Original learning start date on the restart record; and
- the restart record was submitted in the 2021 to 2022, 2022 to 2023 or 2023 to 2024 ILR (YearAimSubmitted is '2021/22', '2022/23' or '2023/24')

If an aim where the learner is on a planned break that is most recently submitted in the 2021 to 2022 ILR (YearAimSubmitted is '2021/22') **does not have** a corresponding restart record:

- the reporting year is set to one year after the later of the expected end year or actual end year; and
- Leaver is set to 1; and
- Achiever is set to 0.

An aim where the learner is on a planned break, that is submitted in the 2022 to 2023 ILR (YearAimSubmitted is '2022/23'), **has** a corresponding restart record if:

- the UKPRN, Learner reference number, Programme type and Framework code or Standard code on the planned break record is the same as the UKPRN, Learner reference number, Programme type and Framework code or Standard code on a restart record; and
- either the Learning start date or the Original learning start date on the planned break record is the same as the original learning start date on the restart record; and
- the restart record was submitted in the 2022 to 2023 or 2023 to 2024 ILR, or the 2024 to 2025 R04 ILR (YearAimSubmitted is '2022/23', '2023/24' or '2024/25')

If an aim where the learner is on a planned break that is most recently submitted in the 2022 to 2023 ILR (YearAimSubmitted is '2022/23'), **does not have** a corresponding restart record:

- the reporting year is set to one year after the later of the expected end year or actual end year; and
- Leaver is set to 1; and
- Achiever is set to 0.

Calculating Qualification Achievement, Pass and Retention Rates

We use the following fields from the QAR dataset to calculate QARs:

- Hybrid end year (Hybrid_End_Year)
 - This field is the later of the Achievement_Year, Actual_End_Year, Expected_End_Year, or the reporting year.
- Leaver
 - This field indicates whether the programme aim has ended, or it is an overdue continuing learning aim or an overdue continuing planned break.
- Achiever
 - This field indicates whether a programme aim has been achieved (achieved learning aims have an Outcome of 1 (Achieved)).
- Completer
 - This field indicates whether all learning activities for a programme aim have been completed (completed learning aims have a Completion Status of 2).

To determine the QARs we use the following calculations:

QAR percentages:

- For each funding year:
 - Number of programmes that have been achieved, divided by number of programmes that have ended, multiplied by 100
- For each hybrid end year (Hybrid_End_Year):
 - Number of programme aims where Achiever is 1, divided by number of programme aims where Leaver is 1, multiplied by 100

Pass rate percentages:

- For each funding year:
 - Number of programme aims that have achieved, divided by number of programme aims that have been successfully completed, multiplied by 100
- For each hybrid end year (Hybrid_End_Year):
 - Number of programme aims where Achiever is 1, divided by number of programme aims where Completer is 1, multiplied by 100

Retention rate percentages:

- For each funding year:
 - Number of programme aims that have successfully completed, divided by the number of programme aims that have ended, multiplied by 100
- For each hybrid end year (Hybrid_End_Year):
 - Number of programme aims where Completer is 1, divided by number of programme aims where Leaver is 1, multiplied by 100

Further Information

The [Introduction to Qualification Achievement Rates \(QARs\)](#) page has links to the relevant QAR business rules, technical specifications, National Achievement Rate tables and guidance.

If you have any enquiries in relation to QARs, please contact us via the [Customer Help Portal](#). Where the enquiry relates to specific learner queries, please also complete and submit the data query form which can be downloaded from the [Introduction to Qualification Achievement Rates \(QARs\)](#) under the relevant academic year.

Calculating the hybrid end year

To understand the logic that hybrid end year uses, it is important to highlight the key QAR derived variables that we use to calculate the hybrid end year, and then how we use these in the calculation. The following examples relate to the 2023 to 2024 QAR dataset, and we refer to this as the current QAR.

The key derived variables are:

- Achievement Year – this is the same as Achievement_Year
- Actual End Year – this is the same as Actual_End_Year
- Planned End Year – this is the same as Expected_End_Year
- Reporting Year – this refers to the academic year you submitted the learning aim to us. If the academic year is after the current QAR year, then we set this variable to 2023.5 (for example, if you report the learning aim in 2024 to 2025).
- Overdue Continuing Aim – this is the same as Overdue_Continuing_Aim
- Overdue Planned Break – this is the same as Overdue_Planned_Break
- Year First Reported Completed – this refers to the academic year you first reported the record with a Completion status of code 2 ('Complete') or 3 ('Withdrawn'). If the academic year you first reported the record with a Completion status of code 2 or 3 is after the current QAR year, then we set this variable to 2023.5 (for example, if you report the learning aim in 2024 to 2025).

We then implement two steps to calculate the hybrid end year:

Step 1

We assign all records an initial value in step 1, based on the following derived variables:

- Achievement Year (Achievement_Year)
- Actual End Year (Actual_End_Year); and
- Planned End Year (Expected_End_Year).

The following table explains the conditions we use to set the values. If the data does not meet the first condition, then we apply the second condition. If the data does not meet the second condition, then we apply the third condition.

Condition	Outcome	Example
<p>The Programme Type is 25, the Funding Model is 36, and one of the following applies:</p> <ul style="list-style-type: none"> the achievement year is unpopulated, and the ILR data was last reported in 2023/24 or after the achievement year is populated, and the ILR data was last reported in 2022/23 with a 2024/25 achievement date If the Programme Type is 25 and the Funding Model is not 36; or the Programme Type is not 25; and the actual end year is unpopulated 	<p>The hybrid end year is set as 2023.5.</p>	
<p>The planned end year is greater than or equal to the actual end year and achievement year.</p>	<p>The hybrid end year is set equal the planned end year.</p>	<p>The planned end date is 31/08/2024. The actual end date is 30/05/2024.</p> <p>The achievement date is 30/08/2024.</p> <p>The planned end year is 2024. The actual end year is 2023. The achievement year is 2024.</p> <p>2024 is greater than 2023, so the hybrid end year is set to 2023.5.</p>
<p>The achievement year is greater than or equal to the actual end year.</p>	<p>The hybrid end year is set equal the achievement year.</p>	<p>The actual end date is 30/05/2024. The achievement date is 30/08/2024.</p> <p>The actual end year is 2023. The achievement year is 2024.</p> <p>2024 is greater than 2023, so the hybrid end year is set to 2023.5.</p>
<p>All other situations.</p>	<p>The hybrid end year is set equal to the actual end year.</p>	

Step 2

We use the output from step 1 for step 2, when we account for the other derived variables.

Condition	Outcome	Example
The record is marked as an overdue continuing aim.	The hybrid end year is set to the maximum value recorded in the actual end year, planned end year and reporting year derived variables.	The record is marked as an overdue continuing aim. The reporting year is 2021 but the actual end year is unpopulated, with the planned end year recorded as 2023. The hybrid end year is set to 2023.
The record is marked as an overdue planned break and the hybrid end year from step 1 is after the current QAR year.	The hybrid end year is set to 2023.5	
The record is marked as an overdue planned break and the hybrid end year from step 1 is not after the current QAR year.	The hybrid end year is set to the hybrid end year from step 1 plus one year.	The record is marked as an overdue planned break, the planned end year is 2022 and the actual end year is 2021. The hybrid end year from step 1 is 2022, the hybrid end year in step 2 is set to 2022 plus one year, so the hybrid end year is set to 2023.
The year first reported completed is after the hybrid end year from step 1.	The hybrid end year is set to equal the first year reported complete.	The planned end year is 2022, the actual end year is 2021, the year first reported complete is 2023. The hybrid end year from step 1 is 2022, the year first reported complete is after this, so the hybrid end year is set to 2023.
All other situations.	The hybrid end year is set to the value from step 1	

Further examples

The following table gives some more examples using the steps given above.

Key criteria	Hybrid end year and explanation
<ul style="list-style-type: none"> • Planned end date = 20/05/24 • Actual end date (AED) = 20/05/23 • AED first reported in 2022/24 	<p>2023/24 because the later of the 3 dates is in the 2023 to 2024 funding year.</p>
<ul style="list-style-type: none"> • Planned end date = 20/05/24 • Actual end date = 25/07/24 • AED first reported in 2023/24 	<p>2023/24 because the later of the 3 dates is in the 2023 to 2024 funding year.</p>
<ul style="list-style-type: none"> • Planned end date = 20/06/24 • Actual end date = 25/07/24 • AED first reported in R04 2024/25 rather than occurring in 2023/24 	<p>2024/25 because the later of the 3 dates is in the 2023 to 2024 funding year.</p>
<ul style="list-style-type: none"> • Planned end date = 20/08/24 • Actual end date = 25/07/24 • AED first reported in 2023/24 	<p>2024/25 because the later of the 3 dates is in the 2024 to 2025 funding year.</p>
<ul style="list-style-type: none"> • Planned end date = 20/05/24 • Actual end date = 25/07/24 • AED first reported in 2023/24 • AED then corrected to a month earlier in R04 2024/25 to 25/06/24 	<p>2023/24 because the later of the 3 dates is in the 2023 to 2024 funding year.</p> <p>The actual end date was first reported in 2023 to 2024, so we discount the second instance that was reported in 2024 to 2025.</p>
<ul style="list-style-type: none"> • Planned end date = 22/06/23 • Actual end date = 26/04/23 • AED first reported in 2022/23 • Achievement Date = 06/12/23 	<p>2023/24 because Achievement date is the later of the dates and is in the 2023 to 2024 funding year.</p>

Contents of the QAR dataset

The following reference files are used in some of the derivations:

- The 2023/2024 Framework lookup file – this file holds programme aim information from the Learning Aim Reference Service (LARS) as at the hard close of the 2023 to 2024 ILR (17 October 2024).
- The 2023/2024 Standard lookup file – this file holds programme aim information from the Learning Aim Reference Service (LARS) at the hard close of the 2023 to 2024 ILR (17 October 2024).
- The 2023/2024 Provider Details file – this file holds providers' details from the Provider and Organisation Information Management System (PIMS), as at 31 July 2024.
- The 2023/2024 Funded Provider Details file – this file holds details of providers who received funding for the funding year.

We obtain the lookup used to determine the delivery region and delivery local authority of a delivery location postcode from the National Statistics Postcode Lookup (UK) May 2024. This will be available to download from the Office of National Statistics website.

Contents of the QAR dataset can be found in the following table:

Data item	Description	Data values	Source (ILR)	Derivation
Learning_Achievement_Date	The achievement date (DDMMYYYY). Only collected for apprenticeship standards.		ILR standard files	Set to Achievement Date .
Age_Group	A banding of the age on the start of the apprenticeship programme.	1 = 16 to 18 2 = 19 to 23 3 = 24 or more	Derived	Set to 1 if D_AgeAimStart is 0 to 18. Set to 2 if D_AgeAimStart is 19 to 23. Set to 3 if D_AgeAimStart or 24 or greater, or unknown.
App_Stand_NoNetPay_Excl	Indicates a learner on a trailblazer pilot standard without a net employer contribution payment being recorded.	0 or 1	Derived	Set to 1 if: <ul style="list-style-type: none"> the Programme Type is 25, the Funding Model is 81; and the sum of the Payment Records in the ILR Apprenticeship Financial Record entity with codes 1 and 2 MINUS the sum of the Payment Records with code 3 is zero Otherwise set to 0.
Apprenticeship_Level	The level of the apprenticeship.		LARS lookups	If the Programme Type is 25, set to the Level from the Standard lookup. Otherwise, set to the Level from the Framework lookup.
CampusID	The campus identifier of the programme aim.		ILR standard files	Set to Campus ID .
Completion_Status	The completion status of the programme aim.		ILR standard files	Set to 4 if the Completion Status is 3 and the Withdrawal Reason is 40. Otherwise, set to Completion Status .
Age_Aim_Start	The age of the apprentice on the start date of the programme aim.		ILR standard files	Set to the value of the ILR derived variable D_AgeAimStart .

Data item	Description	Data values	Source (ILR)	Derivation
Data_Source	The source of the record on the QARs dataset.	ILR	Derived	Set to 'ILR'.
Delivery_Location_Postcode	The postcode of the delivery location.		ILR standard files	Set to Delivery Location Postcode .
Delivery_Region	The delivery location postcode Government office region.		Postcode lookup	Obtained from the National Statistics Postcode Lookup (UK) May 2024.
Delivery_LA	The delivery location postcode local authority district.		Postcode lookup	Obtained from the National Statistics Postcode Lookup (UK) May 2024.
EOP_Excl	Indicates that the programme aim is former EOP provision.	0 or 1	Derived	Set to 1 if and there is a Learning Delivery Funding and Monitoring Type of 'LDM' with a Learning Delivery Funding and Monitoring Code of 351 (Former Employer Ownership Pilot). Otherwise set to 0.
Ethnicity	The apprentice's ethnic background.		ILR standard files	Set to Ethnicity .
Framework_Standard_Filter	Indicates whether the apprenticeship is a framework or a standard.	Framework or Standard	Derived	Set to 'Standard' if the Programme Type is 25. Otherwise set to 'Framework'.
Free_Meals	Indicates that the learner is eligible for free meals or is eligible and receiving free meals. 19+ learners are not eligible for free meals.		Derived	If the Learner Funding and Monitoring Type is 'FME' and the Learner Funding and Monitoring Code is 1 or 2 (14-15 year old learner is eligible for free meals OR 16- 19 year old learner is eligible for and in receipt of free meals), set to the Learner Funding and Monitoring Code , otherwise set to -1.

Data item	Description	Data values	Source (ILR)	Derivation
Fund_Qual_Excl	<p>Indicates that the learner has withdrawn from a learning aim before the qualifying number of days for funding has been met.</p> <p>Note: The qualifying period for funding aims with a planned duration of less than 14 days is 1 day. Fund_Qual_Excl is always set to 0 for aims with a planned duration of less than 14 days.</p> <p>This does not apply to trailblazer pilot standards.</p>	0 or 1	Derived	<p>The planned duration of the aim, in days, is the difference between the Learning Start Date and the Learning Planned End Date.</p> <p>The actual duration of the aim, in days is the difference between the Learning Start Date and the Learning Actual End Date.</p> <p>Set to 1 if the Programme Type is not 25, or the Programme Type is 25 and the Funding Model is not 81; and</p> <ul style="list-style-type: none"> • the planned duration is 168 days or more, the actual duration is less than 42 days and the Completion Status is 3 (Withdrawn); or • the planned duration is between 14 and 167 days, the actual duration is less than 14 days and the Completion Status is 3 (Withdrawn) <p>And</p> <ul style="list-style-type: none"> • the Restart Indicator is 0 (Not a Restart); or • the Restart Indicator is 1 (Restart) and <ul style="list-style-type: none"> ○ the original UKPRN does not equal the new UKPRN ○ the original Learning Actual End Date is less than the new Learning Start Date ○ we can find an apprenticeship on the same ULN at the original UKPRN <p>Otherwise set to 0.</p>
Framework_Code	Framework code.		ILR standard files	Set to FworkCode .
Framework_Name	Framework name.		LARS	Obtained from LARS database.

Data item	Description	Data values	Source (ILR)	Derivation
High_Needs_Students	Indicates that the learner is a high needs student in receipt of element 3 'top-up' funding from the local authority.	0 or 1	ILR standard files	Set to L_HNS
Learner_Home_Postcode	The apprentice's home postcode.		ILR standard files	Set to L_PriorPcode (Postcode prior to enrolment)
Learner_Home_Region	The apprentice's home postcode Government office region.		Postcode lookup	Obtained from the National Statistics Postcode Lookup (UK) May 2024.
Learner_Home_LA	The apprentice's home postcode local authority district.		Postcode lookup	Obtained from the National Statistics Postcode Lookup (UK) May 2024.
Learning_Actual_End_Date	The learning actual end date (DDMMYYYY).		ILR standard files	Set to Learning Actual End Date .
Learning_Planned_End_Date	The learning planned end date (DDMMYYYY).		ILR standard files	Set to Learning Planned End Date .
Learner_Reference	The learner reference number.		ILR standard files	Set to Learner Reference Number .
Learning_Start_Date	The learning start date (DDMMYYYY).		ILR standard files	Set to Learning Start Date .
Learning_Difficulties	Indicates whether the apprentice considers that they have a learning difficulty, disability, or health problem.		ILR standard files	Set to LLDD and Health Problem .
LSD_Before_EFD_Excl	Identifies whether the learning start date of the apprenticeship standard falls before the effective from date as recorded in LARS.	0 or 1	Derived	Set to 1 if the Programme Type is 25, and the Learning Start Date on the ILR record is earlier than the earliest Effective From Date as recorded in LARS, matching on Standard Code . Otherwise set to 0.

Data item	Description	Data values	Source (ILR)	Derivation
Not_Funded_Excl	Identifies whether an apprenticeship has ever received funding from us. Non-funded aims are excluded from QARs.	0 or 1	Derived	Set to 0 if the Funding Model is not 99 (No ESFA funding) in any year. Otherwise set to 1.
Original_Learning_Start_Date	The original date that the learner commenced the learning on the original aim. This is only applicable where the aim is a restart (DDMMYYYY).		ILR standard files	
Learning_Outcome	The learning outcome of the programme aim.		ILR standard files	Set to Outcome .
Overdue_Continuing_Aim	Indicates whether the aim is an overdue continuing aim.	0 or 1	Derived	Set to 1 if the aim is an overdue continuing learning aim (as identified in Identifying overdue aims and planned breaks), otherwise set to 0.
Overdue_Planned_Break	Indicates whether the aim is an overdue planned break.	0 or 1	Derived	Set to 1 if the aim is an overdue planned break (as identified in Identifying overdue aims and planned breaks), otherwise set to 0.
Achiever	This indicates whether the programme aim has been achieved.	0 or 1	Derived	Set to 1 if: <ul style="list-style-type: none"> • Learning_Outcome is 1 (Achieved); and • the Achievement Date is not later than 31 July 2024 (where returned on the ILR for learners on Programme Type of 25 and a Funding Model of 36); or • the Learning Actual End Date is not later than 31 July 2024 (for all other records that do not meet the above criteria) Otherwise set to 0.

Data item	Description	Data values	Source (ILR)	Derivation
Achievement_Year	The achievement year of the programme aim (20XX).		Derived	<p>When the completion status is 2 and the Achievement Date is complete, set to the first calendar year of the funding period the Achievement Date falls in – where returned on the ILR for learners on Programme Type of 25 and a Funding Model of 36.</p> <p>When the Completion status is 1 and Outcome is 8, set to 0. Otherwise set to -1.</p> <p>Example: if the Achievement Date falls in the 2023 to 2024 funding year, Achievement_Year has the value of 2023</p>
Actual_End_Year	The actual end year of the programme aim (20XX).		Derived	<p>Set to the first calendar year of the funding period the Learning Actual End Date falls in.</p> <p>Example: if the Learning Actual End Date falls in the 2023 to 2024 funding year, Actual_End_Year has the value of 2023</p>
Leaver	This indicates whether the record should be counted towards the QAR.	0 or 1	Derived	<p>Set to 1 if:</p> <ul style="list-style-type: none"> • Learning Actual End Date is present; and the Learning Actual End Date is no later than 31 July 2024; or • Achievement Date is present; and the Achievement Date is no later than 31 July 2024 – where returned on the ILR for learners on Programme Type of 25 and a Funding Model of 36; or • Overdue_Continuing_Aim = 1; or • Overdue_Planned_Break = 1 <p>Otherwise set to 0.</p>

Data item	Description	Data values	Source (ILR)	Derivation
Expected_End_Year	The expected end year of the programme aim (20XX).		Derived	Set to the value of the first calendar year of the funding period the Learning Planned End Date falls in. Example: if the Learning Planned End Date falls in the 2023 to 2024 funding year, Actual_End_Year has the value of 2023)
Hybrid_End_Year	The hybrid end year of the programme aim (20XX).		Derived	Set to the highest of: <ul style="list-style-type: none"> • the achievement year (Achievement_Year); or • the actual learning end year (Actual_End_Year); or • the expected learning end year (Actual_End_Year); • the reporting year.
Start_Year	The start year of the programme aim (20XX).		Derived	Set to the value of the first calendar year of the funding period the Learning Start Date falls in. Example: if the Learning Start Date falls in the 2023 to 2024 funding year, Start_Year is set to 2023)
Pathway_Code	The pathway of the apprenticeship framework being undertaken.		ILR standard files	Set to PwayCode.
Pathway_Name	The pathway name on the final matched record.		LARS	Obtained from LARS database.

Data item	Description	Data values	Source (ILR)	Derivation
Pilot_Excl	Apprenticeship seasonal worker pilot learning aims are excluded from QARs.	0 or 1	Derived	Set to 1 if and there is a Learning Delivery Funding and Monitoring Type of 'LDM' with a Learning Delivery Funding and Monitoring Code of 348 (Apprenticeship seasonal worker pilot).
Plan_Break_Excl	This indicates that the apprentice is on a planned break. Planned break aims are excluded from QAR.	0 or 1	Derived	Set to 1 if: <ul style="list-style-type: none"> Completion_Status is 6 (break in learning); Overdue_Plan_Break = 0; and the Learning Actual End Date is no later than 31 July 2024 Otherwise set to 0.
PrimaryLLDD	The primary learner disability, learning difficulty or/and health problem of the learner.		ILR standard files	Set to LLDDCat where PrimaryLLDD is 1.
PriorAttain	The learner's prior attainment level.		ILR standard files	Set to Prior Attainment .
Programme_Type	The programme type.		ILR standard files	Set to Programme Type .
Provision_Type	Identified as apprenticeship aim	Apps	Derived	Set to 'Apps'.
Restart_Indicator	Indicates whether the learner restarted the apprenticeship programme.	0 or 1	ILR standard files	Set to D_Restart .
QAR_Status	Indicates whether or not the record is included in the provider's QAR calculations.	QAR Inclusions QAR Exclusions	Derived	Set to 'QAR Exclusions' if the aim is not included in QAR calculations. Otherwise set to 'QAR Inclusions'. For most excluded aims, a specific exclusion flag will also be set.

Data item	Description	Data values	Source (ILR)	Derivation
Sector_Subject_Area_Tier_1	Sector subject area – the broad (tier 1) classification of the subject of the programme aim.		Derived	Set to SectorSubjectAreaTier1 from the framework or standard lookup.
Sector_Subject_Area_Tier_2	The more specialised classification (tier 2) of the subject of the programme aim.		Derived	Set to SectorSubjectAreaTier2 from the framework or standard lookup.
Sex	The apprentice’s sex.		ILR standard files	Set to Sex .
SR_Snapshot_Id	The return which the aim is being calculated based off.		ILR standard files	Set to Academic_Year followed by the return
Standard_Code	Standard code.		ILR standard files	Set to StdCode
Standard_Description	Standard description.		LARS	Obtained from LARS database.
Subcontractor_Name	The subcontractor’s name.		ILR 2023 to 2024 provider details file	The name of the subcontracting provider, from the ILR 2023 to 2024 provider details file.
Subcontractor_UKPRN	The UKPRN of the partner provider that delivered the main assessment aim or competency aim of an apprenticeship.		Derived	Set to the Subcontracted or Partnership UKPRN of the competency learning aim of the apprenticeship. The competency learning aims is identified from the LARS. The component aims of an apprenticeship programme are those where:

Data item	Description	Data values	Source (ILR)	Derivation
				<ul style="list-style-type: none"> • Aim Type is 3 (Component learning aim within a programme); • UKPRN is the same as the UKPRN of the programme aim; • Learner Reference Number is the same as the • Learner Reference Number of the programme aim; • Framework Code is the same as the Framework Code of the programme aim; • Programme Type is the same as the Programme Type of the programme aim; and • Learning Start Date is the same as the Learning Start Date of the programme aim <p>Each component aim of the apprenticeship is checked against LARS . The component learning aim is the competency aim where:</p> <ul style="list-style-type: none"> • Learning Aim Reference is the same as LearnAimRef on LARS; • Framework Code is the same as FworkCode on LARS; • Programme Type is the same as ProgType on LARS; • Apprenticeship Pathway is the same as PwayCode on LARS; and • FrameworkComponentType on LARS is 1

Data item	Description	Data values	Source (ILR)	Derivation
Software_Supplier_Aim_ID	The software supplier's aim identifier of the aim.		ILR standard files	Set to SWSupAimID .
Transfer_Excl	This indicates that the apprentice has transferred to another apprenticeship programme within the same provider. Transfer aims are not included in QAR.	0 or 1	Derived	Set to 1 if: <ul style="list-style-type: none"> Completion_Status is 3 (The learner has withdrawn from the learning activities leading to the learning aim), the Withdrawal_Reason is 40 (Learner has transferred to a new learning aim with the same provider) and a later programme record exists with a Learning Start Date no more than 120 days after the Learning Actual End Date of the programme with a matching ULN and UKPRN, or <ul style="list-style-type: none"> Completion_Status is 3 and Withdrawal Reason is 7, or Withdrawal Reason is 47 and a programme record exists with a Learning Start Date no more than 30 days after the Learning Actual End Date of the programme matching ULN and a different UKPRN; and the Learning Actual End Date is no later than 31 July 2024 Otherwise set to 0.
UKPRN	The UK Provider Reference Number.		ILR standard files	Set to UK Provider Reference Number.

Data item	Description	Data values	Source (ILR)	Derivation
UKPRN_orig	The UKPRN of the programme aim before the college merger process was applied to a provider's data.		Derived	Further detail on college structural change can be found in the QAR business rules.
ULN	Unique Learner Number.		ILR standard files	Set to Unique Learner Number .
Withdrawal_Reason	The reason learning ended.		ILR standard files	Set to Withdrawal Reason .
Academic_Year	The current academic year for the QARs dataset.	2023/24	Derived	Set to '2023/24'.
Year_Aim_Submitted	The funding year which the aim was submitted in.		Derived	Set to: <ul style="list-style-type: none"> • '2019/20' if from the 2019 to 2020 ILR • '2020/21' if from the 2020 to 2021 ILR • '2021/22' if from the 2021 to 2022 ILR • '2022/23' if from the 2022 to 2023 ILR • '2023/24' if from the 2023 to 2024 ILR • '2024/25' if from the 2024 to 2025 ILR



Department
for Education

© Crown copyright 2024

This publication is licensed under the terms of the Open Government Licence v3.0, except where otherwise stated. To view this licence, visit nationalarchives.gov.uk/doc/open-government-licence/version/3.

Where we have identified any third-party copyright information, you will need to obtain permission from the copyright holders concerned.

About this publication:

enquiries <https://www.gov.uk/contact-dfe>

download www.gov.uk/government/publications

Follow us on Twitter: [@educationgovuk](https://twitter.com/educationgovuk)

Connect with us on Facebook: facebook.com/educationgovuk