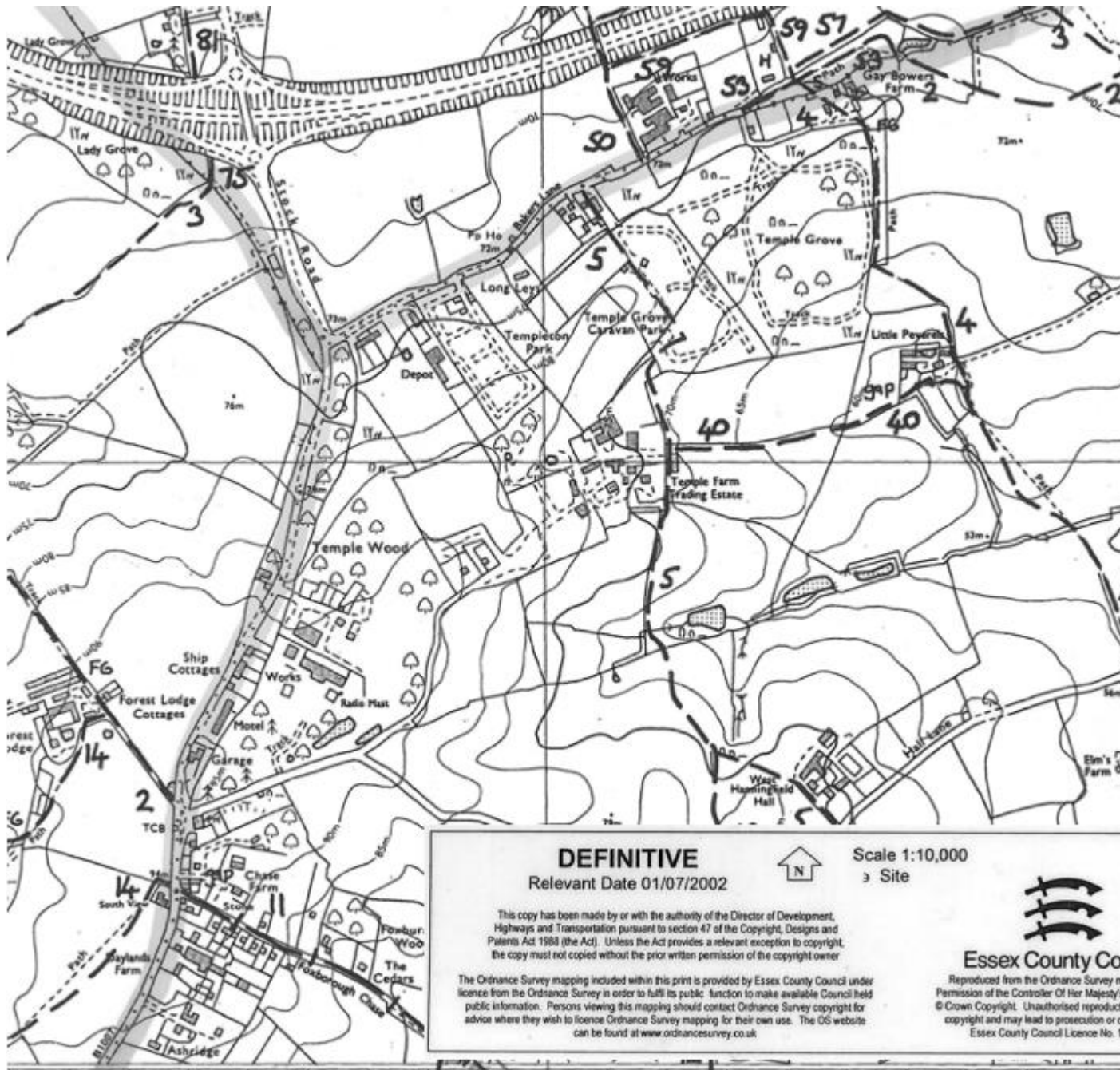


The Definitive Map



Public Rights of Way are protected by law and can only be altered by legal order. The Definitive Map is a statutory document which is conclusive in law as to the existence and location of Public Rights of Way. The map is accompanied by Definitive Statements which give a brief description of each path, and by a series of Definitive Map Modification Orders which record any changes made since the publication of the current Definitive Map in 2002.

The statutory Definitive Map, together with its accompanying Statements and Modification Orders, cannot be viewed online. However, our [digital interactive map](#) does show the Public Rights of Way network on top of the latest Ordnance Survey background maps, and this can be used for most general reference

purposes. If there is a particular dispute, or you need to see the statutory Definitive Map for a specific location, please email [Highway Records](#).

The Definitive Map is under continuous review. If anyone believes a public path is shown incorrectly, or a public path has been established which is not on the map, they may apply to modify it. Please see [Applications to Modify the Definitive Map](#).

Alternatively, it is possible to apply to divert or extinguish a public path. Please see [Permanent Diversions or Extinguishments](#).

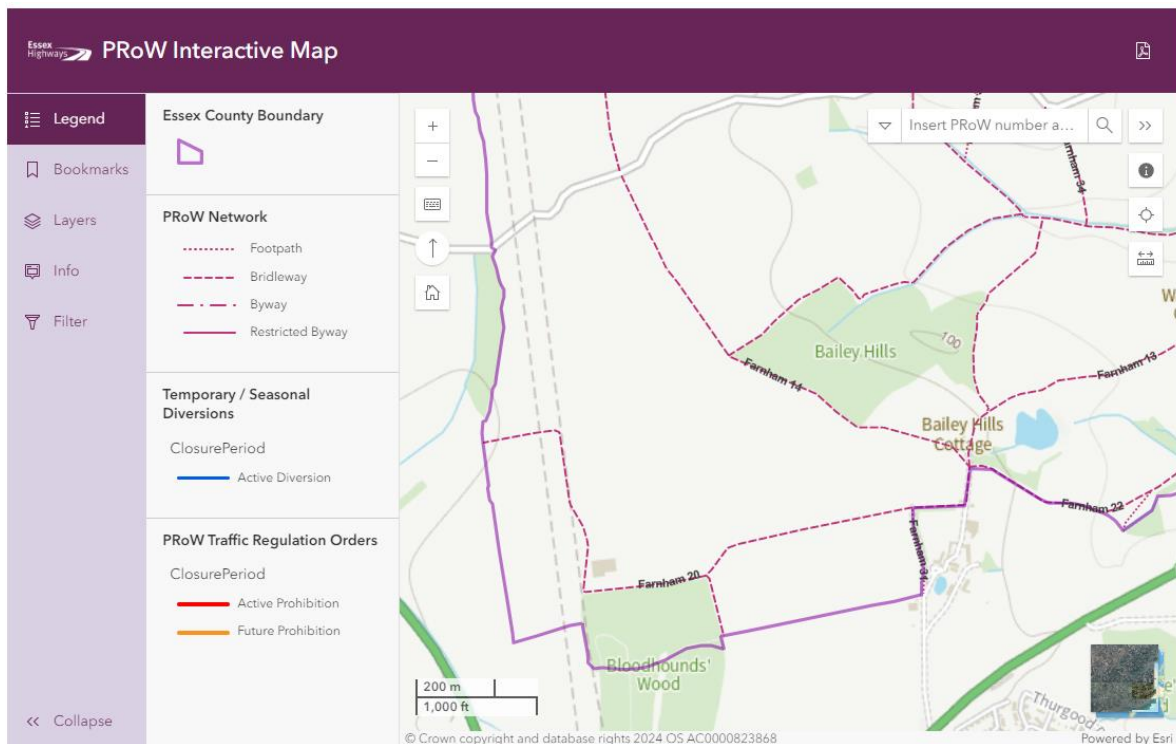
PRoW interactive map

This is an interactive map of Public Rights of Way and is for general purposes only. It is not the statutory Definitive Map which is held at County Hall. District, borough, town and parish councils must also keep copies for their particular areas. The Definitive Map and its associated Map Modification Orders must be referred to in the case of any specific legal query or dispute. In law the Definitive Map provides conclusive evidence of the existence of any Public Rights of Way shown on it. This interactive map does not. For enquiries pertaining to land transaction related matters or for any legally related enquiries, professional interpretation of the map is required and must be referred to the Definitive Map Office, Essex Highways, County Hall, Chelmsford.

The closures, diversions and public right of way network are shown by default. Parish boundaries and our cutting schedule can be added to the map by enabling the layers.

On the map of Public Rights of Way each path is identified on the map by the path number and the associated parish. For example 'Footpath 7 Goldhanger'. This description shown in the info panel when clicking on the path. If you have any comments about this path, please quote this description when contacting Essex Highways to enable the Public Rights of Way team to deal with your query more easily.

You can either use the zoom in/out function to find a specific area of interest or use the search facility. To search for a particular path you can enter the path number, such as '3' and a list of parishes that have a footpath '3' will appear below the search box, select the appropriate parish from the list. You can also use the 'site code' for a particular path, the site code for each path is shown in the info panel, this can be helpful when sharing information with others to find on the map. We have also included eastings and northings coordinates search and What3Words locations. You can check on who can use the different paths on the map by selecting the 'Legend' button. You can filter the map to show only particular types of right of way.



Bridleway 14 in Farnham has a approximate length of 1,305 metres and is in the district of Uttlesford.

The site code BR 14 14 can be used to search the PRoW Network.

Bridleway 20 in Farnham has a approximate length of 1,603 metres and is in the district of Uttlesford.

The site code BR 20 14 can be used to search the PRoW Network.