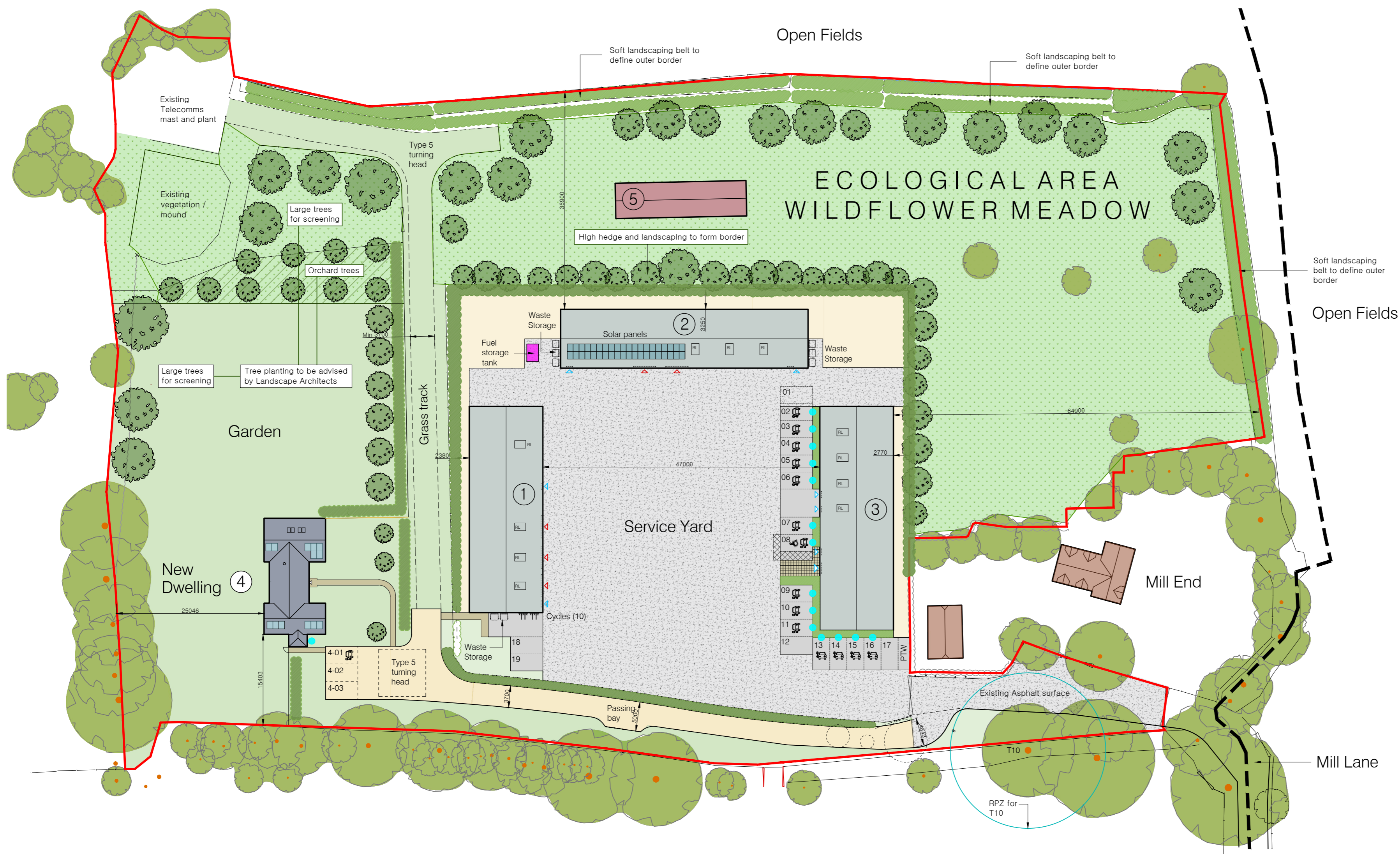
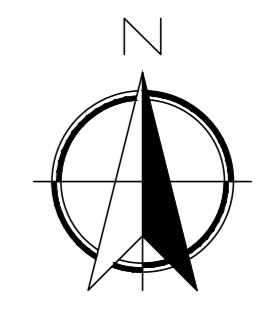


© This drawing is copyright and must not be reproduced in whole or part without obtaining written authority from John Finch Partnership.
Do not scale from this drawing.
All dimensions to be checked on site.
Refer any discrepancies to the project Architect.



- Key**
- Roller shutter
 - Access door
 - Electric Vehicle Charging point
 - Fuel storage tank 2 x 3m (approx)

revision	
issue	
client	

Greenways

project
Camp Farm, Mill Lane
Hatfield Heath
Essex

title
Proposed Site Layout

john finch partnership
chartered architects & town planning consultants

88 Broomfield Road
Chelmsford CM1 1SS
01245 354319/250780
admin@johnfinchpartnership.co.uk

www.johnfinchpartnership.co.uk	
date 27/05/22	scale 1:500
drawn TW/au	checked RJH
dwg no 3502:02	revision P

Building Schedule (Proposed)	Footprint (m ²)	Volume (m ³)
1 Lorry workshop / Egg storage & packaging	437.5	2073
2 Packing area / Packaging storage	420	1030
3 Self storage / Offices	475	1484
4 Dwelling	186.4	815
5 Grounds maintenance store (retained)	127.1	431
TOTAL	1646	5833
Hard standing (service yard, drive, parking and paths)	4083.75	

Surface finishes	
	Concrete
	Grass
	Tarmac
	Gravel
	Soft landscaping (planting)
	Paving
	Ecological Area Wildflower meadow
	Hedgerows + tree planting

