



Department  
for Education



Easy  
Read

# SEND futures

A report about the lives  
of young people with  
Special Educational  
Needs and Disabilities  
at 12 or 13 years old



# Easy Read



This is an Easy Read version of some information. It may not include all of the information but it will tell you about the important parts.



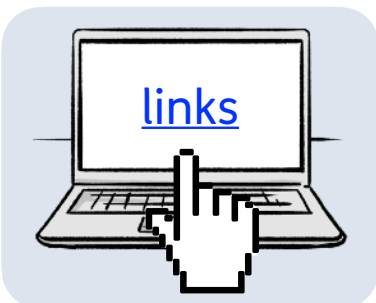
This Easy Read booklet uses easier words and pictures. Some people may still want help to read it.



Some words are in **bold** - this means the writing is thicker and darker. These are important words in the booklet.



Sometimes if a bold word is hard to understand, we will explain what it means.



Blue and underlined words show links to websites and email addresses. You can click on these links on a computer.

# What is in this booklet

About this report.....	4
About the Department for Education .....	5
What we know .....	6
What we did.....	8
What we found out.....	10
What we think.....	17
Find out more .....	18

# About this report



Department  
for Education

The Department for Education asked young people with **SEND** about their lives and school.

**SEND** stands for **S**pecial **E**ducational **N**eeds and **D**isabilities. Young people with SEND need some extra support to learn and grow.

An illustration of a family consisting of a father, a mother, and a young boy. They are all giving thumbs up. A speech bubble above the boy says "We said".

We said

This report tells you what the young people and their families said.

# About the Department for Education



The Department for Education is part of the government.

Our job is to:



- Help decide what young people should learn about.



- Make sure schools are good places to learn.



- Think about how to make education better for everyone.

# What we know

We know that young people with SEND:



- Do not do as well at school as other young people.



- Are **excluded** from school more often than other young people.

**Excluded** means not being allowed to go to school because of the way they behave.

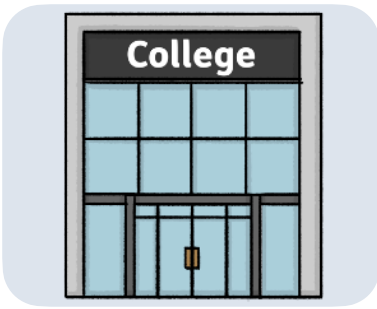
We also know that after they are 16, they are less likely to either:



- Have a job.



- Take part in training.



- Stay at school or go to college.

We do not know enough about:



- Their **wellbeing**.

**Wellbeing** means feeling happy and healthy in their body and mind.



- How well they can live **independently**.

**Independently** means they can live by themselves and without support.

# What we did



We shared a **survey** to find out about the education and lives of young people with SEND.

A **survey** is a set of questions for people to answer.



We asked young people who were in Year 8 at school in 2021 to 2022. These young people were aged 12 to 13.



More than 3000 young people with SEND answered our questions.



We asked their parents and carers, and more than 3500 answered our questions.





We shared the survey between May and September 2022.



We asked some young people with SEND to do the survey online.



We visited some young people at home to do the survey face to face.

# What we found out

## Wellbeing

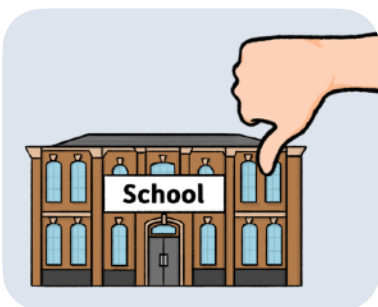


Most of the young people we asked were happy with their life.



They were most happy with their family.

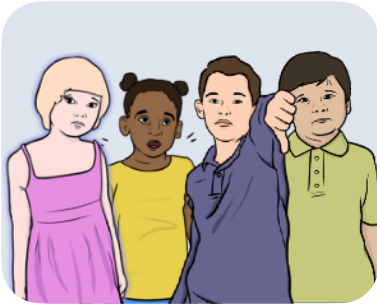
They were least happy with:



- Their school.



- How they look.



Young people with autism or with social, emotional and mental health difficulties (SEMH) were least happy with their life.



Going to a special school or having an **EHCP** did not make a difference to young people's wellbeing.

An **Education Health and Care Plan (EHCP)** is an official document that agrees what support a child or young person needs, and should get.

## Bullying and relationships with other young people



Most parents and carers said that their child got on well with other people of the same age.

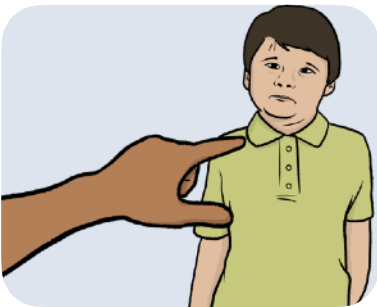


Young people in special schools were more likely to get on with people of the same age rather than young people in standard schools.



Most young people with SEND said they had been bullied in the last year.

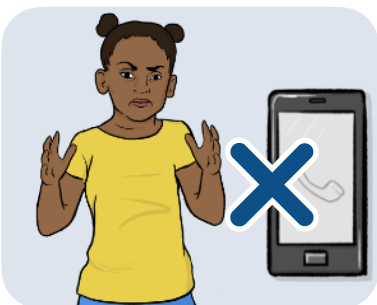
They said they had:



- Been called names.

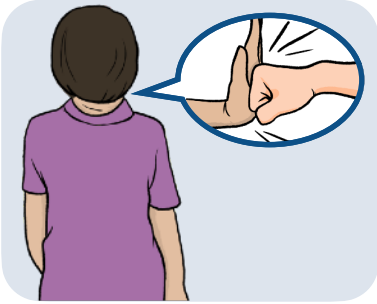


- Been left out of activities.



- Had something stolen from them.

They also said they had:



- Been threatened with being hurt.



- Been hurt.



Young people with autism or SEMH needs were most likely to be bullied.

Young people were more likely to be called names to do with their needs if they had:



- Physical needs.



- Needs to do with seeing or hearing.



Most young people who were bullied told their parents about it.



Young people who had been bullied were less happy.

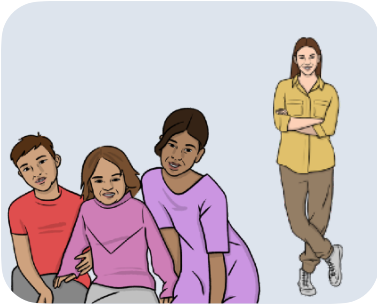
## Living without support



Learning to live without support is an important part of growing up.



Nearly half of young people said most weeks they spent time with their friends, without an adult.



Nearly a quarter of young people said they did not spend any time with their friends, without an adult.

These were mostly young people who:



- Have an EHCP.



- Go to a school for young people with SEND.



- Have autism.

## In the future



Nearly all young people, and their parents and carers, thought they would have a job in the future.



Just over half of young people with SEND want to go to university or college.



Over half of parents said their child's school had helped them get ready for life after school.



# What we think



We think it is important to do surveys so we can understand more about the lives of young people with SEND.



We could not have got the same information from:

- Other surveys about young people in general.



- Asking questions to small groups of young people with SEND.



Sharing this survey also meant we could find out about different groups of young people with SEND, like those whose families do not have a lot of money.



We also think it would be good to ask the same people questions again in the future, to find out what has changed.

# Find out more



You can look at our website here:

[www.gov.uk/government/publications/send-futures-longitudinal-study-discovery-phase](http://www.gov.uk/government/publications/send-futures-longitudinal-study-discovery-phase)

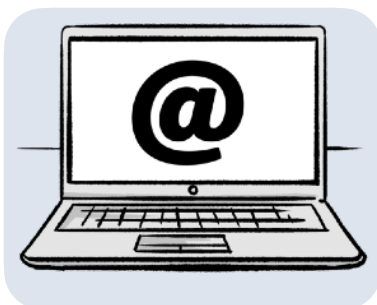
You can contact us by:



- Post:  
SEND & AP Research Team  
Department for Education  
Sanctuary Buildings  
Great Smith Street  
London  
SW1P 3BT



- Phone: 0370 000 2288



- Email:  
[SEND.Futures@education.gov.uk](mailto:SEND.Futures@education.gov.uk)

This Easy Read booklet was produced by [easy-read-online.co.uk](http://easy-read-online.co.uk)  
The booklet includes images licensed from Photosymbols & Shutterstock.