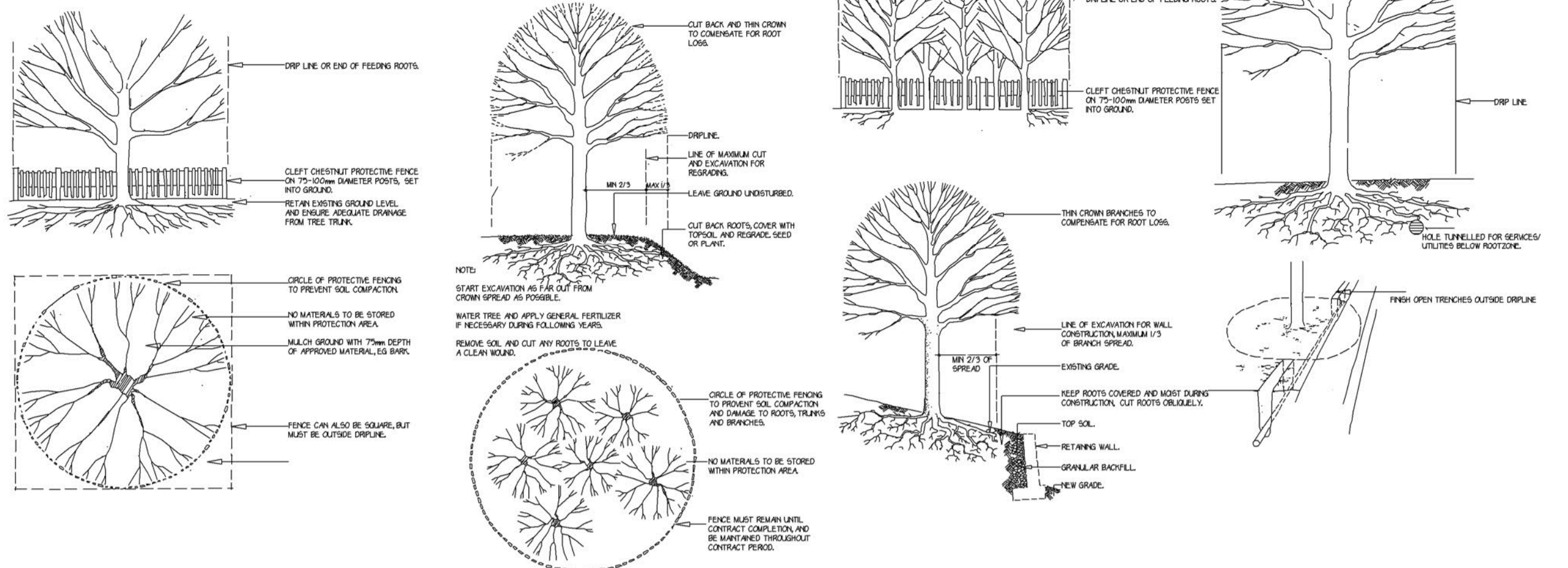




Standard Tree Protection Details



Landscaping Specification

GENERAL

Soil conditions – cultivate and plant into most friable soil that is not waterlogged. Do not plant into frozen or snow covered soil.

Climate conditions – carry out the work while soil and weather conditions are suitable for the relevant operations. Do not plant during periods of frost or strong winds.

Plant during the following periods
 Bare root deciduous trees and shrubs: late October to late March.
 Container grown plants: at any time if ground and weather conditions are favourable. Ensure that adequate watering and weed control is provided.

Machines and tools – use only machinery and tools suitable for the site conditions and the work to be carried out. Use hand tools around trees, plants and in confined spaces.

Underground services – Contractor is responsible for knowing the ascertaining the position of any underground services and shall take precautions to prevent any damage occurring to them immediately inform the appropriate body if damage occurs. The contractor shall be responsible for any claims resulting from such damage.

PLANT MATERIAL

Plant quality in general – to comply with the relevant part of BS 3136 and BS 5236 for any advanced nursery stock where applicable.

Materially undamaged, sturdy, healthy, vigorous, of good shape and without damaged stems. Grown in a suitable environment and hardened off. Free from pests, diseases, discoloration, weeds and physiological disorders. With balanced root and branch systems. True to the names and sizes indicated within the plant schedule.

Bare root plants – all bare root plants shall have vigorous fibrous root systems which are reasonably equally developed in all directions and of adequate extent to support the growth of the plants root system.

Container grown plants – supplied in a growing medium with adequate nutrients for the plant to thrive until permanently planted. Contained in the container, firmly and well watered. With root growth substantially filling the container, but not root bound, and in a condition conducive to successful transplanting. Grown in the open for at least two months before being supplied. Grown in containers with holes adequate for drainage when placed on any substrate commonly used under irrigation systems.

Planting trees – spread a minimum of 75mm thick layer of well-rotted manure in the bottom of each pit and fork over. Lay 50mm min. mixture of peat substituted leaf mould/steep sand (6:2:1 by volume), the peat being well watered. All manure is to be covered so that none comes in direct contact with the tree roots. Soak the roots of bare-rooted trees in water for at least an hour before planting. Continue backfilling with top soil into which 170gm of bonemeal has been mixed (per tree). Firm down well by treading as filling proceeds. The tree must be planted to the same depth as in the nursery and to the same orientation. Before watering, the depth and diameter of the rootball shall be measured to facilitate the digging of the pit to the correct size. Back filling shall be done in layers of 150-225mm depth with each stage firmly consolidated to eliminate air pockets.

Staking – to be requisite length, pressure impregnated (with preservative non injurious to plants) at barked softwood 75mm diameter.

Tree ties – to be plastic ties 'Tom' pattern, nailed to stake with large head galvanised nails.

Watering – at the time of planting, each tree shall be well watered in. If there is a risk of frost within the 24 hours the watering shall be delayed until such risk has passed.

Mulch – apply 50mm mulch around trees immediately after watering in. Mulch to consist of pulverised natural pine bark such as 'Cambrak' ornamental grade from Cambrak Products Ltd, 30 Rigent Street, Cambridge or equivalent. Graded particles 6mm-25mm with all fines removed, free from pees, disease, weeds and additives.

Rootballed plants – root balls shall be well filled with fibrous roots and consist of reasonably cohesive natural soil which has been carefully lifted at the nursery so that it remains firmly attached to the roots of the tree. Plants which have had bare roots bagged up with soil or compressed are not acceptable.

Transplanted at least twice in the nursery. Single, straight leader. Substantial and evenly developed side shoots to within 0.2m of ground level. Main stem to be substantial enough to be supported by short stake and single tie.

Labelling – when supplied to site trees to be labelled in accordance with the relevant part of the latest BS 3136 in order that they can be readily identified.

Substitutes – if specified trees are unavailable or known to be likely to be undesirable at the time of ordering, submit alternatives and obtain approval from LPA before making any substitutions.

PREPARATION OF PLANTING

Site clearance – Prior to cultivation all rubbish including stones, bricks, concrete, mortar, building materials, bottles, cans, litter, wood, plastic etc to be removed to tip. Remove all weed from planting areas either by hand pulling or using a herbicide containing glyphosate as the active ingredient which should be applied in accordance with the manufacturer's instructions allowing sufficient time prior to cultivation for the chemical to be effective.

Cultivation – do not dig or cultivate within the root spread of trees and shrubs to be retained. Break up compacted topsoil to its full depth.

Tree pits – shall be of a diameter 600mm greater than the root ball. The depth of the pit shall be 225mm deeper than the root ball and not less than 600mm deep. The base of the tree pit shall be forked over to a depth of 225mm.

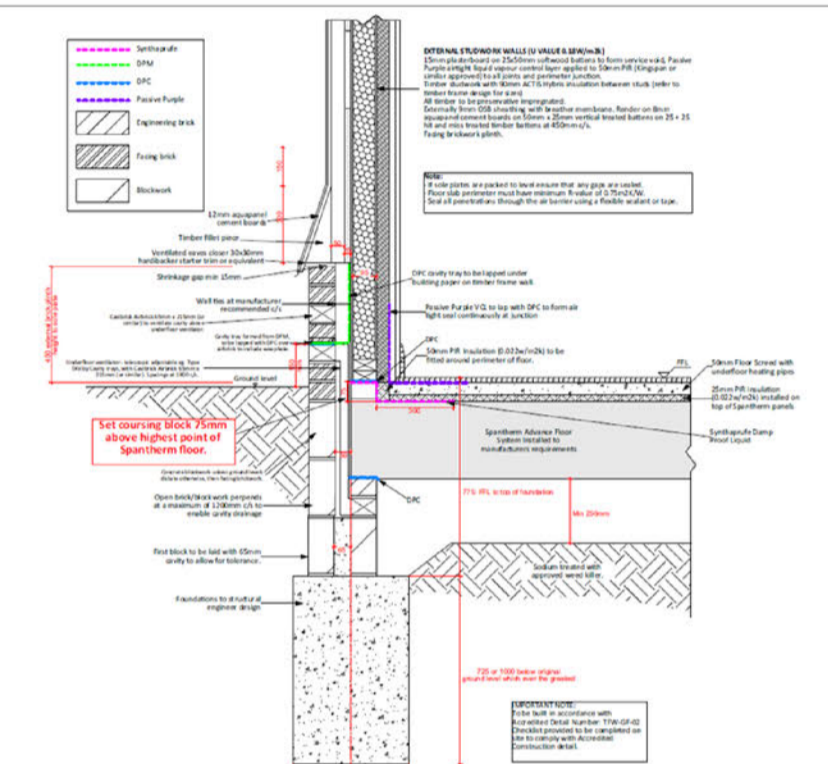
MAINTENANCE AND MAKING GOOD DEFECTS

Maintenance prior to practical completion – at all times maintain planted areas in a clean, tidy and largely liver weed free state.

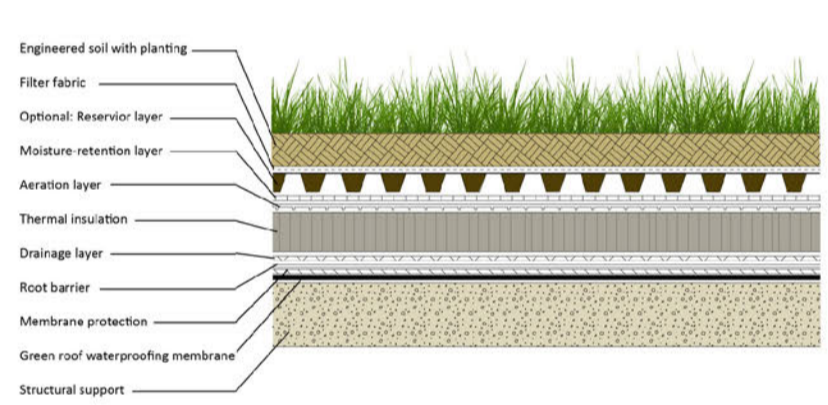
Maintenance and defects liability period – the maintenance and defects liability run concurrently for thirty months (three years) after practical completion.

Maintenance – Make visits at approximately monthly intervals during the growing season and as necessary to fulfil the requirements of this specification. After each visit remove soil and other debris from surrounding hard surfaces and leave the site in a clean and tidy condition. Fork over beds as necessary to keep soil loose. Ensure that the trees are not damaged by the use of mowers, nylon flammé rotary cutters and similar powered tools. Every two months check condition of stakes and ties and replace if missing or broken. Adjust as necessary to allow for growth and prevent the rubbing of bark. Prune at appropriate times to remove dead, dying, diseased or damaged wood and suckers, to promote healthy growth and natural shape.

Failures of Planting – Excepting theft or malicious damage after practical completion, any of the trees that have failed to thrive, during the defects liability period, will be regarded as defects due to materials or workmanship not in accordance with this specification. Unless otherwise instructed they must be replaced by approved equivalent trees. Replacements must match the original specification. Replacement planting is to be carried out during the planting season within which the defects are discovered.



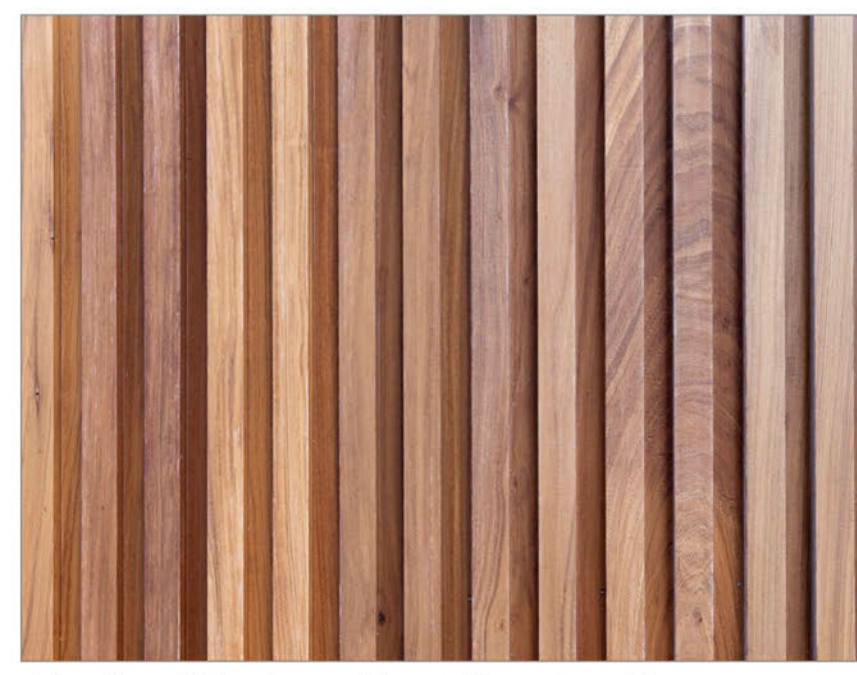
Pelham Structures Standard Detail



Green Roof Detail

External Materials

- Decked Area to Villas
- Wooden Terrace
- Block Paved driveways
- Tarmac Road
- Garden Space
- Proposed Hedges
- Estate Fencing



Vertical Timber Cladding to villas



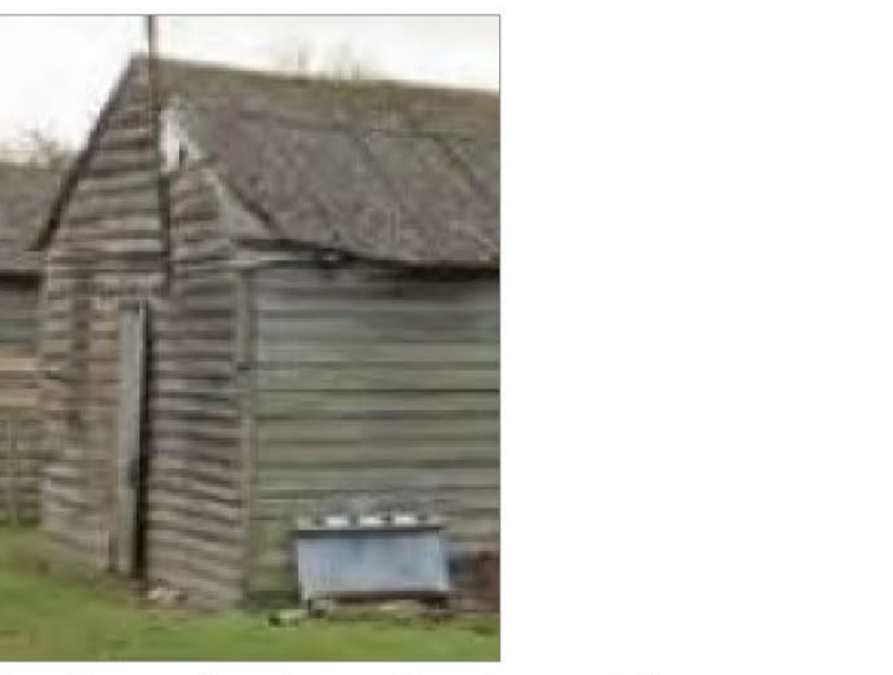
Green Roof to villas



Estate Fencing to boundaries



Corrugated Steel Sheet Sandwich to huts



Feather edge boarding to match existing POW buildings

ISSUE	DESCRIPTION	DATE REVISD	BY
A	Timber boarding material and note amended	19.04.2024	HLW



Project name: Little Heath, Hatfield Heath		Drawing title: Materials and Details Plan	
Scale: 1:1000	Date: 09.04.2024	Drawing no: 471 x 04A	
Paper: A1 Paper	Drawn: HLW	Dimensions are in millimeters unless otherwise stated. Do not scale from this drawing. If in doubt, ask.	

Materials and Details Plan

Little Heath, Hatfield Heath