



Scarborough - local data profile

March 2024

Contents:

- (1) Indicators for policy investment themes
- (2) Town demographics and deprivation



**LEVELLING
— UP —**



About this document

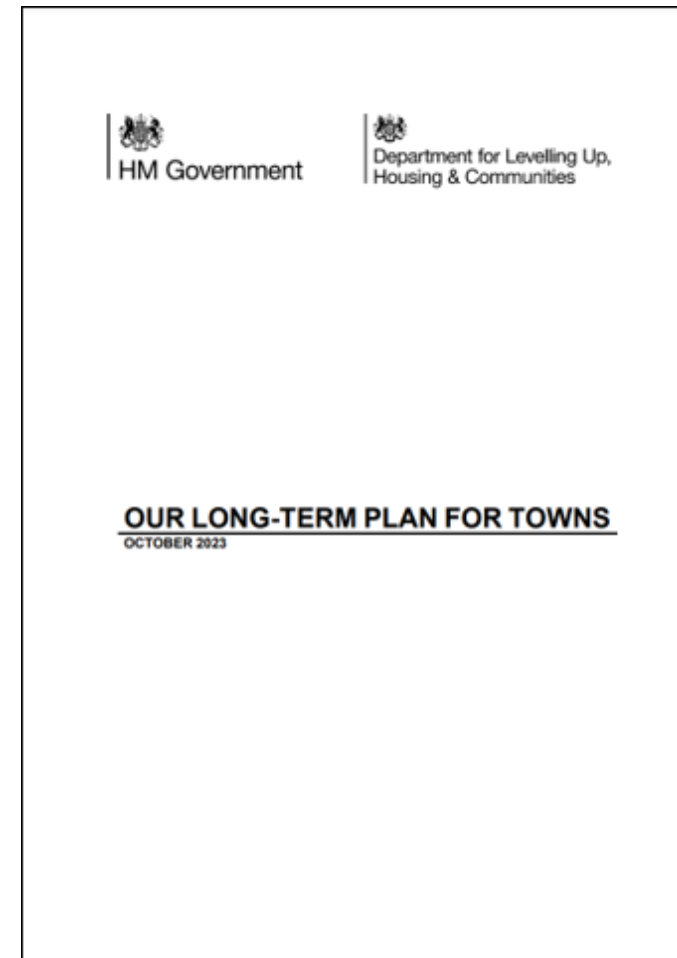
This document, produced by DLUHC in collaboration with ONS, presents high-level data to support the Long-Term Plan for Towns programme. This collaboration is supported through the Levelling Up Subnational Data project. It does not make policy recommendations.

Background

- On 1 October 2023, the UK government announced its long-term plan for towns. This will provide long-term investment in 75 towns to be spent on local people's priorities such as regenerating local high streets and town centres or securing public safety.
- This data pack primarily uses metrics and indicators across the three policy investment themes [as detailed further in the guidance for local authorities and Town Boards](#). Data presented in this pack are at town level, where possible, but other geographies are used where sufficiently granular data is not yet available.
- This is a local data profile. It does not take account of the implementation of current national or local policy interventions.

Data caveats

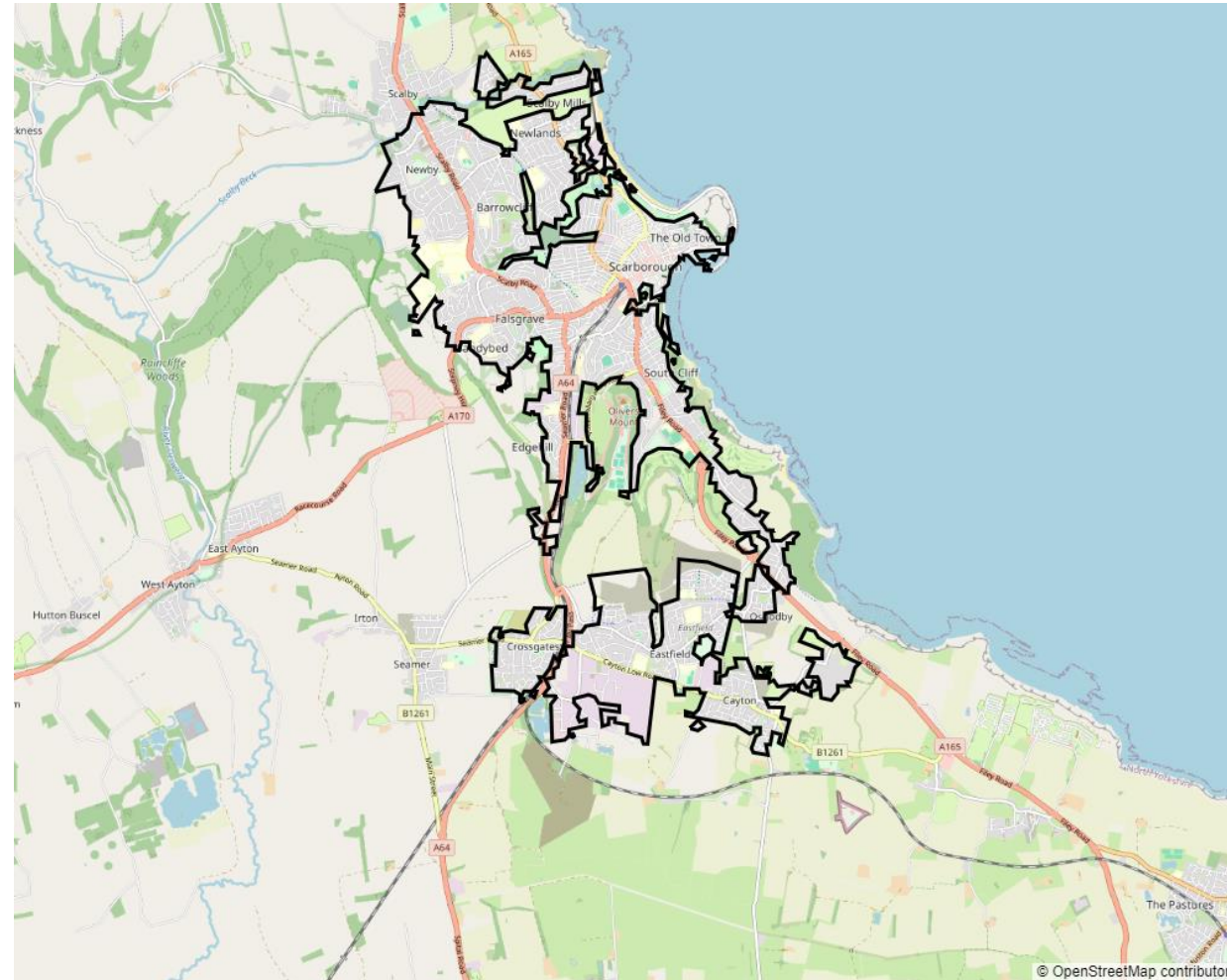
- Lockdown restrictions and the furlough scheme were in place at the time Census 2021 was conducted, which significantly impacted 'travel to work methods' data. As such, the data are not reflective of current commuting patterns. We have therefore used Census 2011 data in the commuter flows table shown in this pack. [Census 2021 employment data](#) may also be impacted by furlough and the timing of Census day (March 2021).
- The data sources in this pack are the latest available as of 30th November 2023. In collaboration with the Office for National Statistics (ONS), we have derived metrics at town level based on Built Up Areas for 2022 where this data was not previously available. Estimates are at town level unless stated otherwise. These are experimental estimates for small levels of geography that may be more volatile or have higher levels of uncertainty, which should be taken into consideration when interpreting the data.
- Due to data availability, estimates at local authority (LA) level are based on geographic boundaries as of 2022. "Scarborough (local authority)" in data visuals throughout the pack refers to the former Scarborough LA area.





Map of Scarborough

This data pack defines a town's boundary based on the definition of Built Up Area (BUA, 2022), unless stated otherwise. This reflects the approach set out in the Long-Term Plan for Towns guidance for defining the geographical area covered by the Town Board.

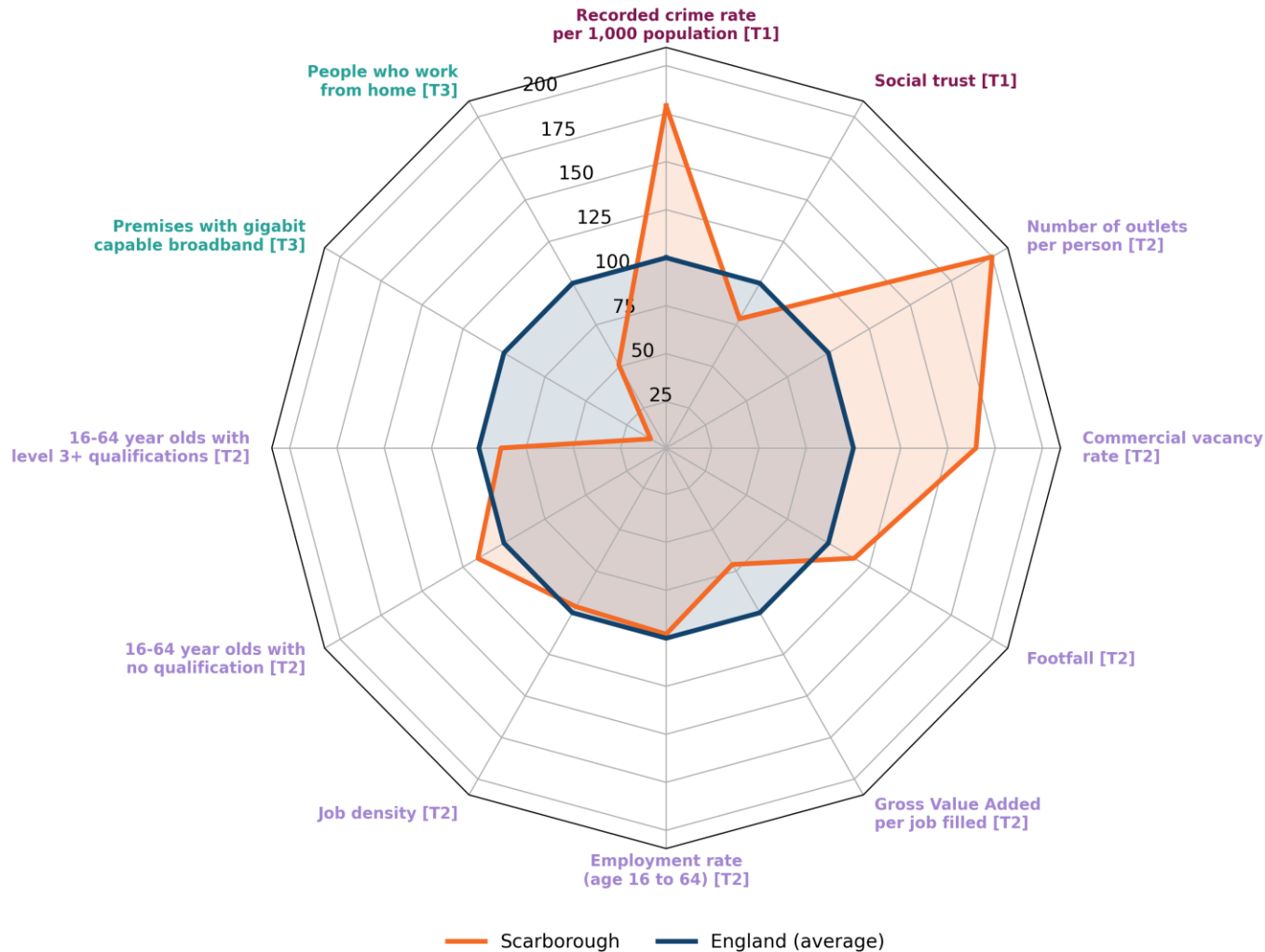


Source: [ONS, 2022](#)



Overview of town indicators

This page provides an overview of how the town's indicators (listed in Annex B) for policy investment themes fare against national averages.



The chart on the left shows how Scarborough town's indicators (orange) fare against national averages (dark blue). Town values have been scaled relative to the national averages which were set to 100.

The policy investment themes are listed below:

- **[T1] Safety and Security**
- **[T2] High Streets, Heritage and Regeneration**
- **[T3] Transport and Connectivity**

How to read the chart:

1. Compare the overall shape of the town data points to the national average shape.
2. The closer a town marker is to value 100 on the chart, the closer it is to the national average. For example, a town value of 150 means that it is 50% higher than the national average.



Indicators for policy investment themes

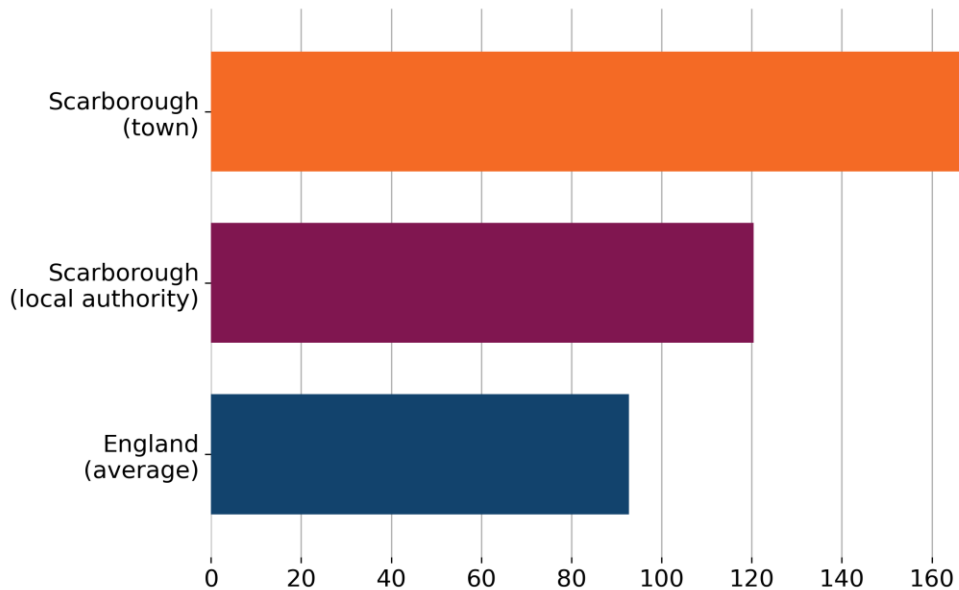


Safety and Security

“Towns will now be able to use this funding to reduce crime and improve safety in their local area.” (Our Long-Term Plan for Towns, 2023)

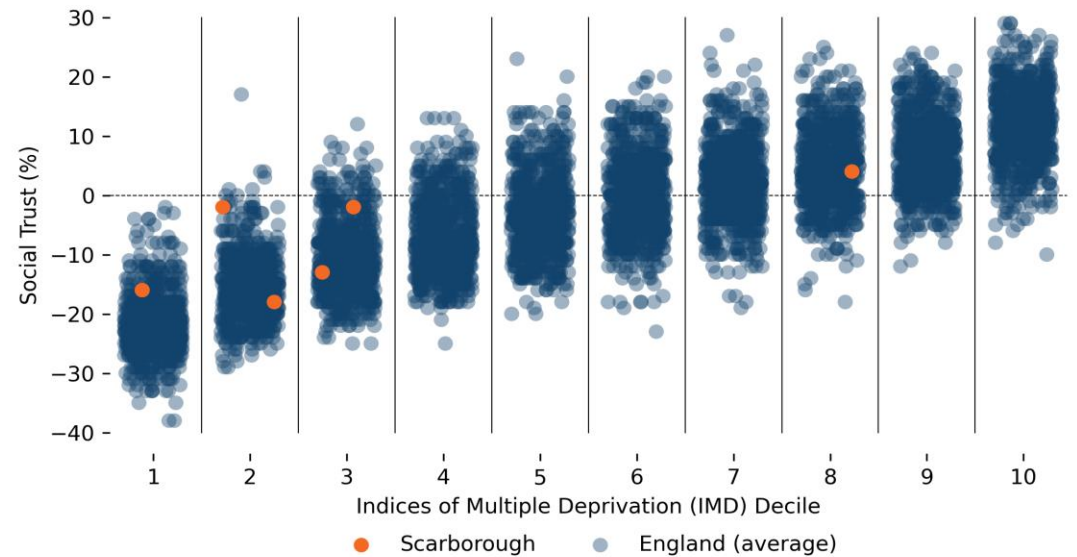
Indicator	Scarborough (town)	Former Scarborough LA area	England
Recorded crime rate per 1,000 population (2023)	166.2	120.4	92.8
Social trust (%) (2023)	-7.7	-5.3	-3.1

Recorded crime rate per 1,000 population, 2023



Source: data.police.uk, 2023

Social Trust (%) and Index of Multiple Deprivation (IMD) deciles
(IMD Decile 1 = Most Deprived)



Source: [MHCLG IMD, 2019](#); [Onward, 2023](#)

Note: Data is at MSOA level, resulting in multiple MSOAs per town. There was an average of 7 respondents per MSOA.

[Net social trust](#) is defined as the estimated proportion of people who say they generally trust others minus the proportion of people who say that you cannot be too careful when dealing with people. According to [Onward \(2023\)](#), **Scarborough has a social trust score of -7.7%**, which is lower than the England average of -3.1%, showing that there is a lower level of social trust within Scarborough than national levels. More deprived [Middle Layer Super Output Areas \(MSOAs\)](#) are likely to have lower levels of social trust than less deprived MSOAs in Scarborough.



High Streets, Heritage and Regeneration (1/2)

“Towns would be able to use this funding to enhance their town centres, making them and their buildings more attractive and accessible to residents, businesses, and visitors in a post Covid environment.” (Our Long-Term Plan for Towns, 2023)

Indicator	Scarborough (town)	England
Number of outlets (takeaways, restaurants, clubs, bars, pubs, fitness facilities and sport clubs) per 1,000 population (Sept 2023)	4.0	2.0*
Commercial vacancy rates (%) (Nov 2023)	17.8	10.8*
Footfall index** based on Virgin Media O2 mobile phone data (March 2022 to March 2023)	115.8	100

* England average is derived from Built Up Areas with a population between 20,000 and 100,000 only.

** Anonymised and aggregated mobile network data by Virgin Media O2. Footfall is defined as the average daily number of outbound journeys (not including journeys to home) within the town/Built Up Area over the period March 2022-March 2023. The mean average footfall of all English towns with a population between 20,000 and 100,000 people, has been standardised to an index of 100, with the figure for this town scaled relative to this average.

10-minute walking distance to green spaces in Scarborough, 2023



Source: [Fields in Trust - Green Space Index, 2023](#)



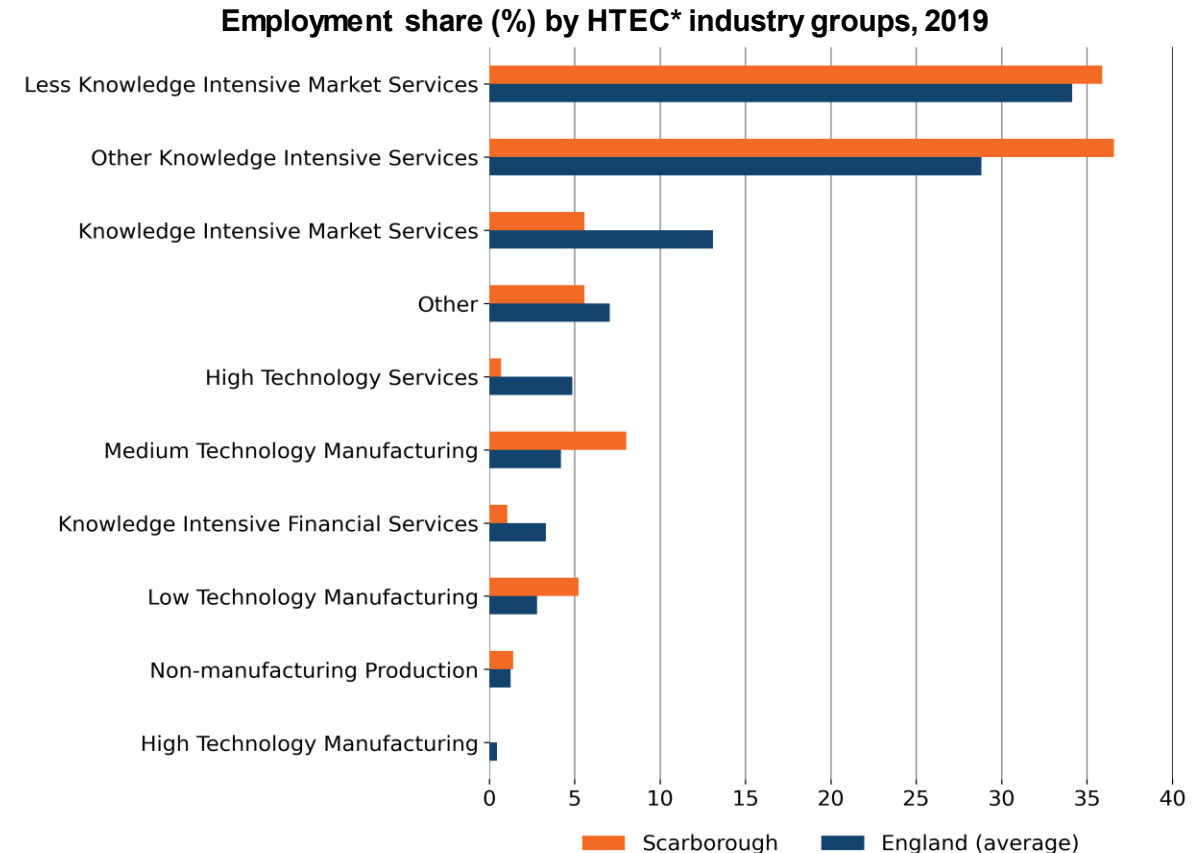
High Streets, Heritage and Regeneration (2/2)

“Towns would be able to use this funding to enhance their town centres, making them and their buildings more attractive and accessible to residents, businesses, and visitors in a post Covid environment.” (Our Long-Term Plan for Towns, 2023)

Indicator	Scarborough (town)	Former Scarborough LA area	Yorkshire and The Humber	England
Gross Value Added per job filled (£) (2020)	41,781	39,971	48,763	58,869
16-64 year olds with level 3+ qualifications* (%) (2021)	49.1	50.3	51.5	55.6
16-64 year olds with no qualification (%) (2021)	14.6	13.9	14.7	12.6
Indicator	Scarborough (town)	Former Scarborough LA area	Yorkshire and The Humber	England
Employment rate (age 16 to 64) (%) (2021)	69.5	70.4	69.2	71.0
Job density** (2019)	0.79	0.79	0.76	0.82

*Proportion of 16 to 64 year olds with a [level 3 qualification or above](#), such as 2 or more A levels, 4 or more AS levels, degree (BA, BSc) or higher degree (MA, PhD, PGCE).

**[Job density](#) is defined as the number of jobs in an area divided by the resident population aged 16-64 in that area. For example, a job density of 1.0 would mean that there is one job for every resident aged 16-64.



Source: [ONS, 2019](#)

*HTEC: High-tech industry and knowledge-intensive services industry groups. Calculations are based on rounded data.

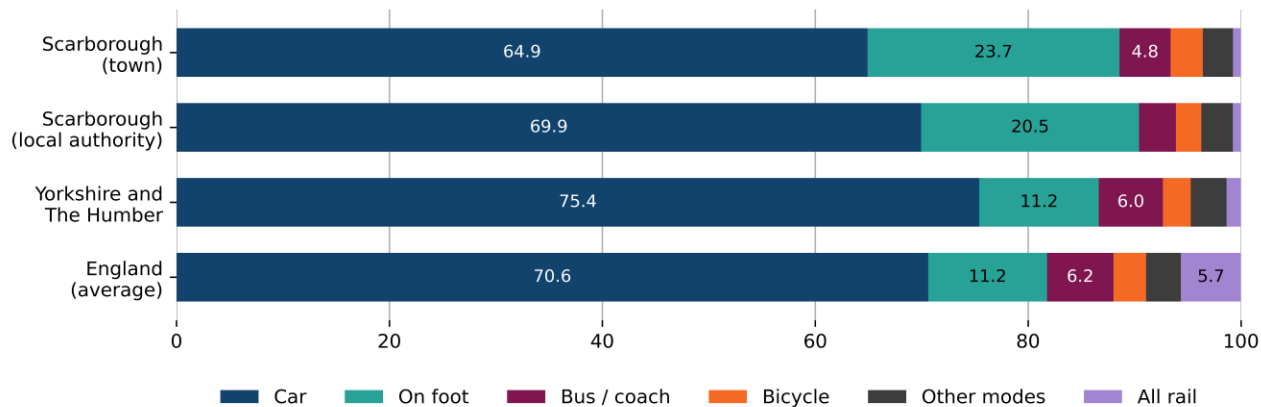


Transport and Connectivity (1/2)

“This funding could make towns more connected - increasing footfall and viability – to high streets and local shopping centres, and accessibility to local employment opportunities.” (Our Long-Term Plan for Towns, 2023)

Indicator	Scarborough (town)	Former Scarborough LA area	Yorkshire and The Humber	England
Premises with gigabit capable broadband (%) (Jan 2023)	7.6	7.3	74.8	72.9
People who work from home (%) (2021)	16.1	19.0	25.9	31.5

Method of travel to work (%), 2021



Source: [ONS, 2023](#)

We have excluded the “Work mainly at or from home” category from this chart to make it easier to clearly see the methods used to travel to work. Percentages do not include those working from home.

NB: Data presented on the chart above (from Census 2021) should not be compared with the tables on the right, which represent Census 2011 data. The tables on the right are based on BUA 2011 geographies, which may be different to the BUA 2022 geographies that the majority of data in this pack are reported at. Census travel data for 2021 were impacted by lockdown restrictions and the furlough scheme that were in place in March 2021.

Flows of commuters entering or leaving Scarborough, 2011

Town name	2011 Population	Incoming	Outgoing	Working local
Scarborough	61,749	7,448	6,759	20,609

Source: DLUHC analysis based on Census 2011 data

Top 10 residence – work connections between Built Up Areas, 2011

Place of Residence	Place of Work	People
Scarborough	Scarborough	20,609
Scarborough	No fixed place of work	1,790
Usual residence out of built up areas	Scarborough	1,095
Scarborough	Place of work out of built up areas	895
Filey	Scarborough	642
East Ayton	Scarborough	584
Bridlington	Scarborough	534
Seamer (Scarborough)	Scarborough	518
Whitby	Scarborough	403
Hunmanby	Scarborough	371

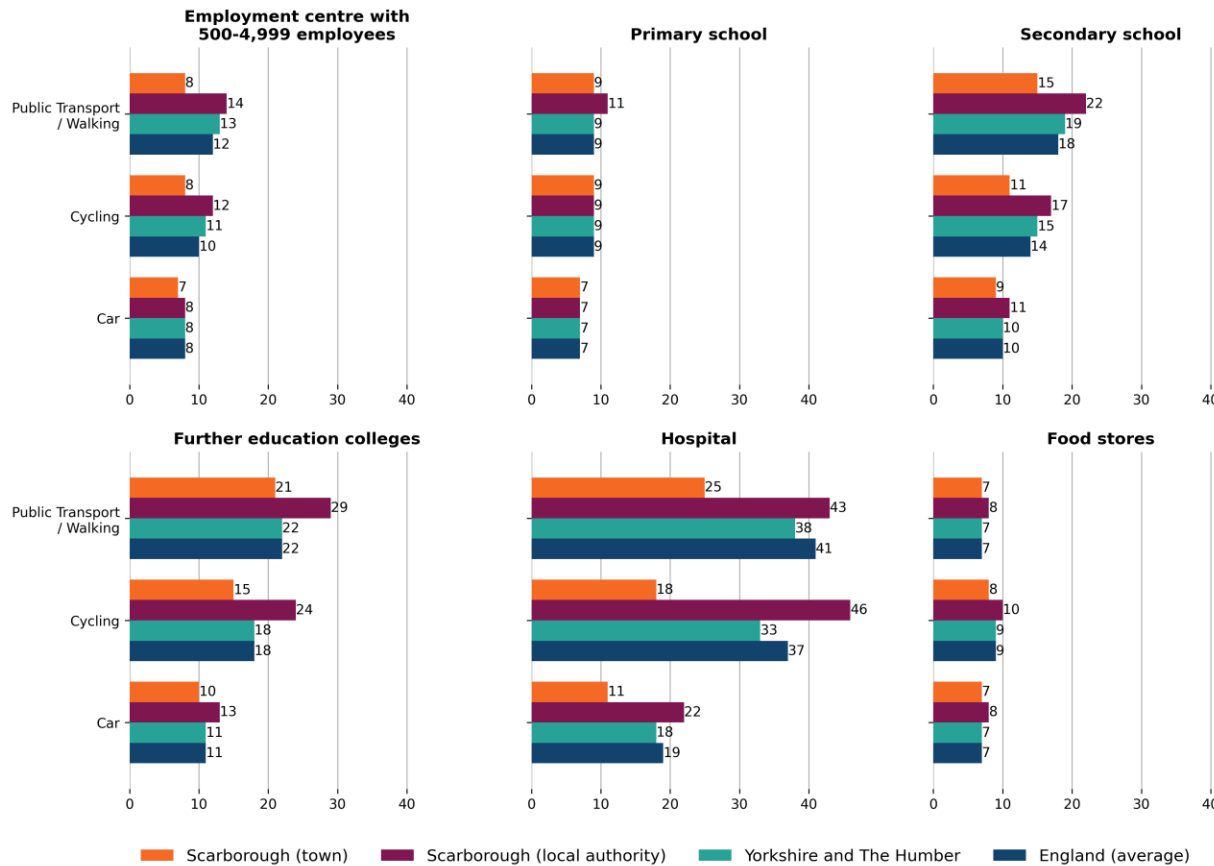
Source: DLUHC analysis based on Census 2011 data



Transport and Connectivity (2/2)

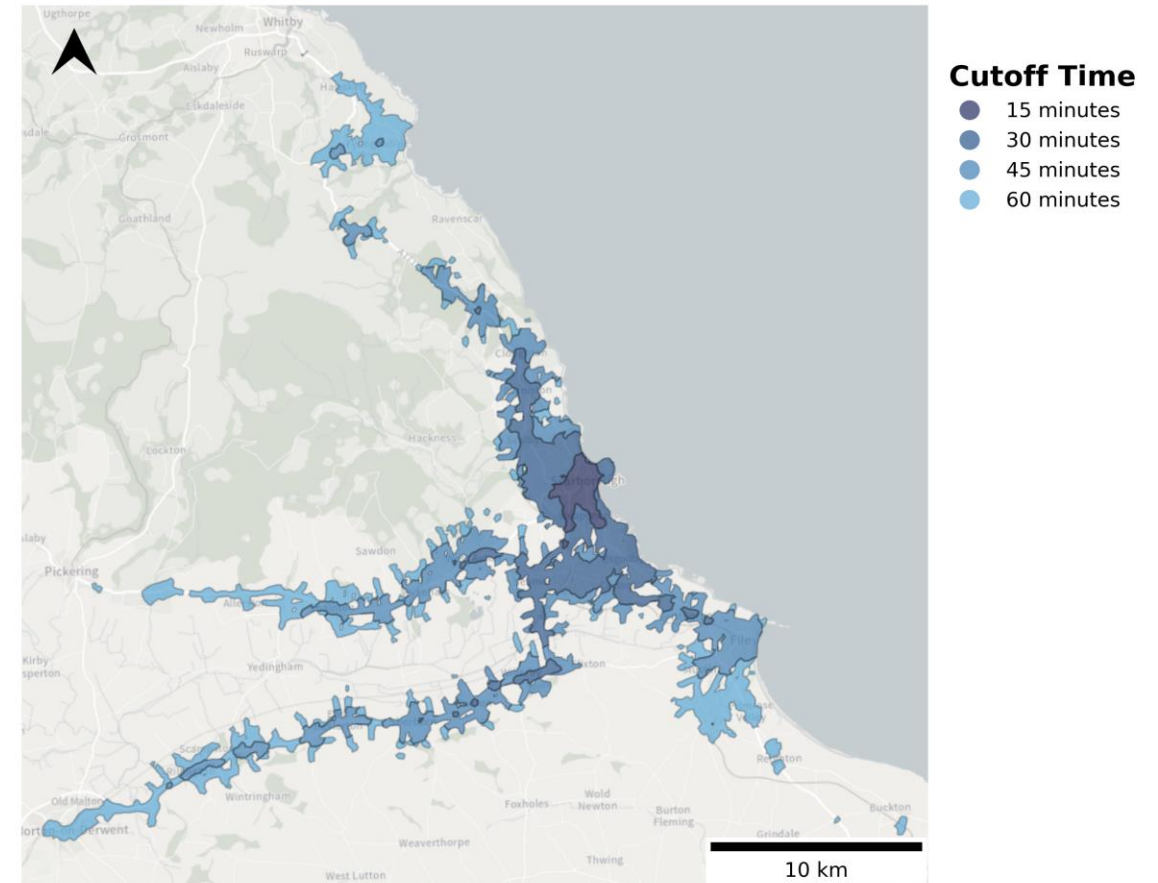
“This funding could make towns more connected - increasing footfall and viability – to high streets and local shopping centres, and accessibility to local employment opportunities.” (Our Long-Term Plan for Towns, 2023)

Average minimum travel time to the nearest key service (minutes), 2019



Source: [Department for Transport, 2021](#)

Public transport accessibility by journey time from Scarborough train station, between 7:15am and 9:15am



Source: [ONS, 2022](#)

Note: Data is from 15th November 2022



Annex A - Town demographics and deprivation

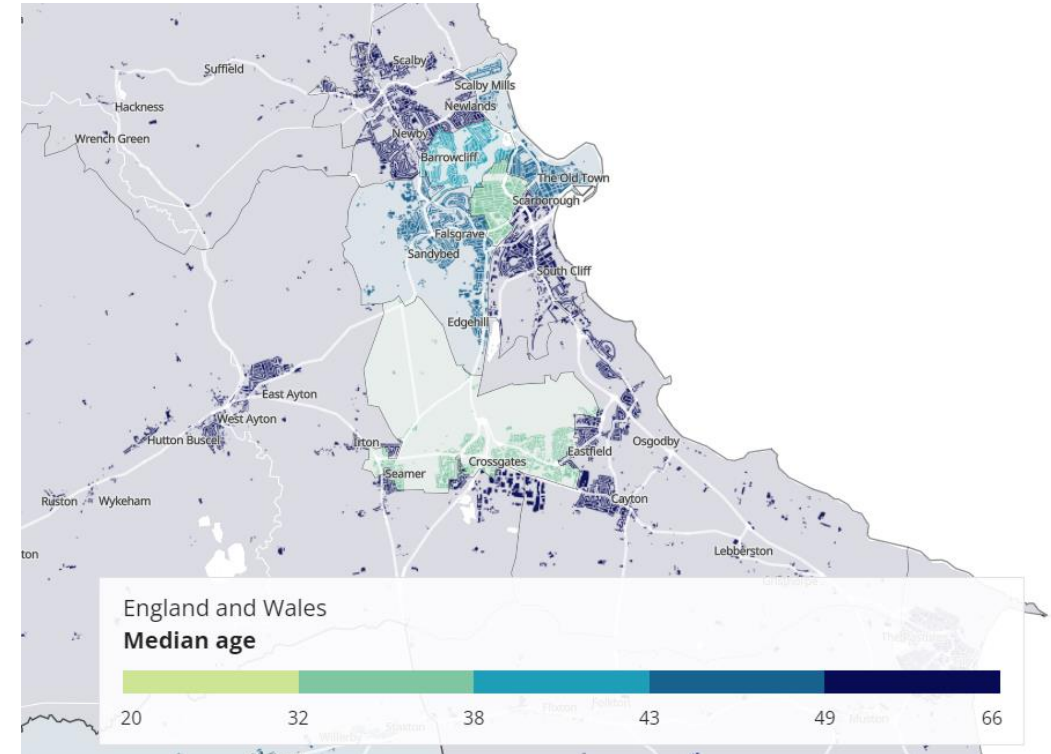


Demographics: Age and population

Headlines:

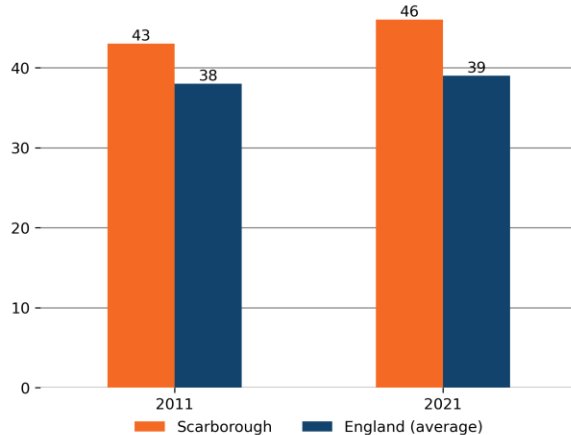
- The [median age in Scarborough \(town\) is 46 years](#) (2021). The [median age](#) for England is 39. The median age for the former Scarborough LA area is 50 years. The map on the right shows the average median age within Scarborough at MSOA level.
- The median age in Scarborough (town) **increased** by 3 years between 2011 and 2021. For context, the median age in England increased by 1 year over the same period (see *bottom left chart below*).
- Scarborough (town) has a [population of 59,505](#) (2021). Between 2011 and 2021, Scarborough's [population changed by -0.2%](#). For context, the population changed by -0.1% in the former Scarborough LA area, 3.7% in Yorkshire and The Humber, and 6.6% in England.
- 16.6% of people in Scarborough (town) are under 16 years old, and 23.7% are aged 65 and over. For context, the England average was 18.6% and 18.4%, respectively (see *bottom right chart below*).
- Across Scarborough, 95.8% of people identified with a White ethnic group, 1.9% as Asian, Asian British or Asian Welsh, 0.5% as Black, Black British, Black Welsh, Caribbean or African, 1.2% with Mixed or Multiple ethnic groups, and 0.6% with other ethnic groups.

Median age in Scarborough, 2021



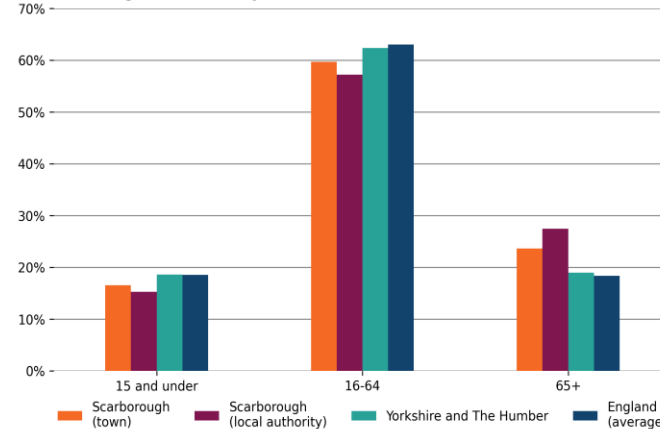
Source: [ONS Census, 2021](#)

Median age of population, 2011 and 2021 Census



Source: [ONS Census, 2021](#); [ONS Census, 2011](#)

Age profile by location, mid-2021 estimates



Source: [ONS Census, 2021](#)

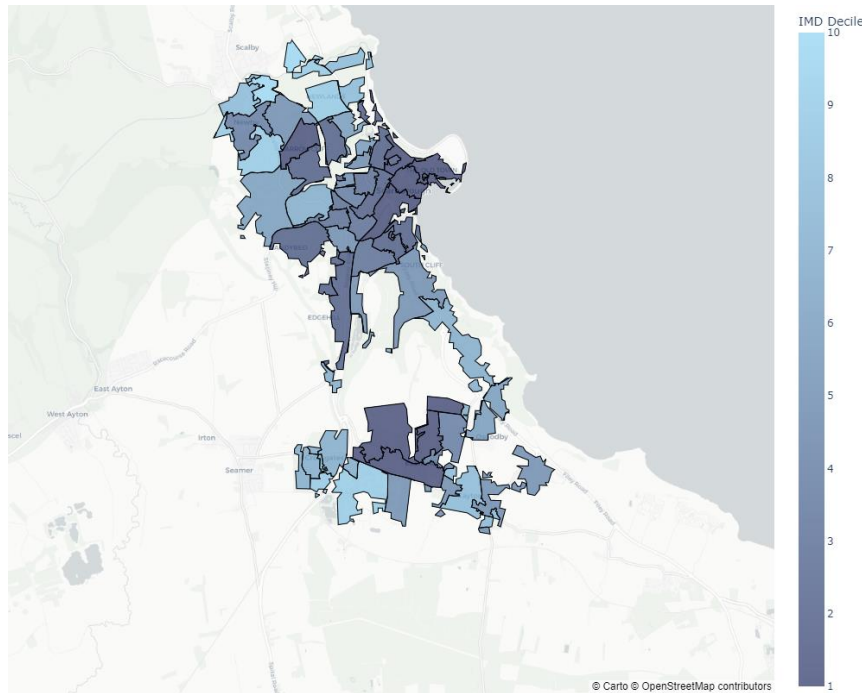


Deprivation

Headlines:

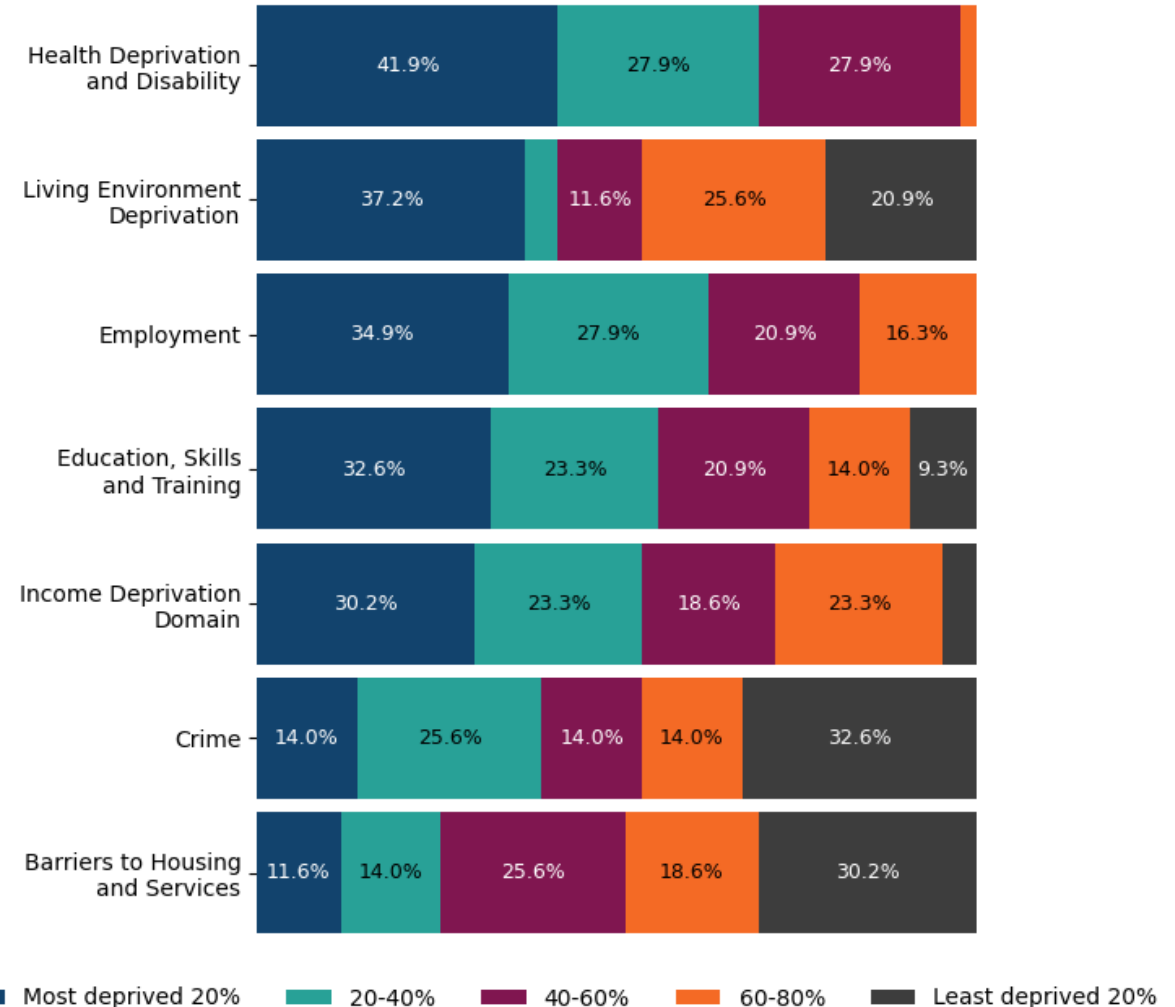
- **Over 40%** of [Lower Layer Super Output Areas \(LSOAs\)](#) in Scarborough are in the **top 20% most deprived in England in terms of Health Deprivation and Disability.**
- **Living Environment Deprivation (27.9%) and Education, Skills and Training (23.3%)** were the domains that had the largest proportion of Scarborough's LSOAs in the **top 10% most deprived in England.**

Deprivation levels across LSOAs within Scarborough by decile, 2019
(Decile 1 = Top 10% most deprived in England)



Source: [MHCLG IMD, 2019](#)

Deprivation levels (%) across LSOAs within Scarborough, compared to the England average, 2019



Source: [MHCLG IMD, 2019](#)

Note: Missing labels on the bars represent a percentage of less than 7%.



Annex B - Data and sources



Data and sources

Indicator	Policy investment theme	Source
Recorded crime rate per 1,000 population (2023)	Safety and Security	https://data.police.uk/data/
Social trust (2023)	Safety and Security	https://www.ukonward.com/reports/good-neighbours/
Number of outlets (takeaways, restaurants, clubs, bars, pubs, fitness facilities and sport clubs) per 1,000 population (Sept 2023)	High Streets, Heritage and Regeneration	Local Data Company
Commercial vacancy rates (%) (Nov 2023)	High Streets, Heritage and Regeneration	Local Data Company
Footfall index based on Virgin Media O2 mobile phone data (March 2022 to March 2023)	High Streets, Heritage and Regeneration	Virgin Media O2
10-minute walking distance to green spaces (2023)	High Streets, Heritage and Regeneration	https://experience.arcgis.com/experience/bad00cdfa6b140599b06c64d10dc73c9?data_id=dataSource_21-Local_Authority_GSI_Score_2023_6252%3A183%2CdataSource_22-Local_Authority_GSI_Score_2023_6252%3A183
Gross Value Added (£) per job filled (2020)	High Streets, Heritage and Regeneration	https://www.ons.gov.uk/employmentandlabourmarket/peopleinwork/labourproductivity/adhocs/1795gvaperfilledjobbysselectedbuiltupareasandlocalities
16-64 year olds with level 3+ qualifications (%) (2021)	High Streets, Heritage and Regeneration	https://www.ons.gov.uk/peoplepopulationandcommunity/housing/articles/townsandcitiescharacteristicsofbuiltupareasenglandandwales/census2021#qualifications
16-64 year olds with no qualification (%) (2021)	High Streets, Heritage and Regeneration	https://www.ons.gov.uk/peoplepopulationandcommunity/housing/articles/townsandcitiescharacteristicsofbuiltupareasenglandandwales/census2021#qualifications



Data and sources

Indicator	Policy investment theme	Source
Employment rate (age 16 to 64) (%) (2021)	High Streets, Heritage and Regeneration	https://www.nomisweb.co.uk/datasets/c2021rm024
Job density (2019)	High Streets, Heritage and Regeneration	https://www.ons.gov.uk/employmentandlabourmarket/peopleinwork/employmentandemployeetypes/adhocs/1796jobdensitybysselectedbuiltupareas
Employment share (%) by HTEC industry groups (2019)	High Streets, Heritage and Regeneration	https://www.ons.gov.uk/employmentandlabourmarket/peopleinwork/employmentandemployeetypes/adhocs/1794employmentbyhightechindustryandknowledgeintensiveindustrygroupshtecbysselectedbuiltupareasandlocalities
Premises with gigabit capable broadband (%) (Jan 2023)	Transport and Connectivity	https://www.ofcom.org.uk/research-and-data/multi-sector-research/infrastructure-research/spring-2023
People who work from home (%) (2021)	Transport and Connectivity	https://www.ons.gov.uk/datasets/TS061/editions/2021/versions/4
Method of travel to work (2021)	Transport and Connectivity	https://www.ons.gov.uk/datasets/TS061/editions/2021/versions/4
Flows of commuters entering or leaving your town (2011)	Transport and Connectivity	DLUHC analysis based on Census 2011 data
Top 10 residence – work connections between Built Up Areas (2011)	Transport and Connectivity	DLUHC analysis based on Census 2011 data



Data and sources

Indicator	Policy investment theme	Source
Average minimum travel time to the nearest key service (minutes), 2019	Transport and Connectivity	https://www.gov.uk/government/statistical-data-sets/journey-time-statistics-data-tables-jts
Public transport accessibility by journey time from the town train station/landmark (2022)	Transport and Connectivity	https://geoportal.statistics.gov.uk/
Median age (2021)	Used in the demographics section	https://www.ons.gov.uk/peoplepopulationandcommunity/populationandmigration/populationestimates/bulletins/populationandhouseholdestimatesenglandandwales/census2021unroundeddata
Median age (2011)	Used in the demographics section	https://www.nomisweb.co.uk/census/2011/ks102ew
Population estimates (2021)	Used in the demographics section	https://www.ons.gov.uk/peoplepopulationandcommunity/housing/articles/townsandcitiescharacteristicsofbuiltupareasenglandandwales/census2021#built-up-areas
Population by country of birth (2021)	Used in the demographics section	https://www.ons.gov.uk/datasets/TS004/editions/2021/versions/3
English Indices of Deprivation (2019)	Used in the deprivation section	https://opendatacommunities.org/data/societal-wellbeing/imd2019/indices