

## STF – FO02 - SOIL RECEPTION PROCEDURE

|                     |                  |                       |                |
|---------------------|------------------|-----------------------|----------------|
| <b>Document No:</b> | STF - All - FO02 | <b>Issue No:</b>      | 3              |
| <b>Author:</b>      | Jon Owens        | <b>Approved By:</b>   | Steve Langford |
| <b>Issue Date:</b>  | 01/06/22         | <b>Approval Date:</b> | 01/06/22       |

### Introduction

This procedure relates to the measures to be undertaken for the assessment of data and inspection of waste received at the soil treatment facility. It allows rejection of non-conforming waste to ensure no contaminated soils are accepted which cannot be treated by the treatment facility to a standard suitable for reuse, or which breach the list of permitted wastes as shown in the site's Environmental permit.




### Principle of Operation

The inspection will allow the following to be assessed prior to acceptance:

1. Presence of untreatable and hazardous materials (e.g. tars, clinker, asbestos insulation etc.) in the contaminated soil.
2. Presence of excessive litter/debris in the contaminated soil.
3. Compliance with the previously supplied chemical/physical analysis information (supplied by waste producer).
4. Potential for the waste to behave as a liquid or have free water/oil in the waste

If the waste material is not compliant with the agreed conditions of the Environmental Permit and pre-acceptance assessment, then the waste will be declined/rejected. As a note, the forms of untreatable asbestos described in point 1 are predominantly insulation products as follows in Table 1.

**Table 1.** Unacceptable Forms of Asbestos Insulation Products

| Form of asbestos                | Example  |
|---------------------------------|--|
| Asbestos pipe lagging           |  |
| Loose asbestos fill             |  |
| Asbestos insulation board (AIB) |  |

## Procedure

### Pre-Acceptance Assessment

This is undertaken by Provectus to confirm treatability to meet the reuse criteria. A set of Terms and Conditions for acceptance are sent to the Waste Producer including a clear statement of any waste characterisation samples that are deemed untreatable. These are agreed in writing between the Waste Producer and Provectus prior to an authorisation number (contract line) being issued by FCC at the weighbridge for deposit at the Soil Treatment Facility.

Where data gaps exist or queries remain about the suitability of material for treatment, Provectus or FCC will offer to attend the site of origin to undertake pre-acceptance analysis and visually inspect the material and obtain further information about the waste description.

In the event that the moisture content of the waste being in the range of 25-30% then the potential for free water or oil will be further reviewed. Where moisture contents are at this level or even higher and the material does not behave as a liquid, have the potential for releasing water/oil etc and is suitable for the site infrastructure then it would be accepted on a case by case basis.

Should either Provectus, or after consultation, FCC determine that there is the high potential for material to contain untreatable inclusions or to behave as a liquid or contain free water or oil then the waste will be declined for acceptance.

### Duty of Care Documentation

Duty of Care Documentation and other legal procedures (registration of hazardous waste site *etc.*) are completed between the Waste Producer and forwarded to FCC. No tipping on the STF will be permitted without relevant documentation from the waste producer. This must be checked on-site at the STF to ensure that the load is indeed destined for the STF, and that the documents are correctly completed. In the case of hazardous waste, the consignment note shall be filled in by a member of Provectus staff; and in the case of non-hazardous waste, the waste transfer note shall be inspected at the STF site office, and the load checked by a Provectus staff member at the STF.

### Health and Safety

The site technician or PM is to provide guidance to the location for soil to be tipped, and any relevant safety information prior to tipping of soil.

Technicians and site personnel are to stand well away from the lorry when tipping so as to avoid any crush injuries/incidents as a result of being in close proximity to the tipping lorry. Any drivers must be informed of the requirement to wear a hard hat and high visibility vest when outside of the lorry cabin.

Lorries shall be informed to check that any waste/debris is removed from their lorry prior to leaving the STF.

### Visual Inspection: Waste Input

The following locations will be used for accepting wastes:

- Hydrocarbons only: biopile treatment area
- Asbestos only, or asbestos and hydrocarbons: designated asbestos processing area

The following plant and personnel are required as part of this procedure:

- Provectus STF Technician
- Excavator / loading shovel (if available)

Each load of soil for inspection will be tipped onto the nominated quarantine area by the tipper lorry. The technician will inform the tipper lorry driver to remain at the stockpiling area until the inspection has been completed.

In the event of the material containing free water or oil, the load will be immediately rejected.

In the event of untreatable forms of asbestos being present, the load will be immediately rejected

The excavator will be used to expose any unsuitable materials and allow a comprehensive visual assessment. The technician will determine the next action when this has been completed, this will comprise of the following:

- Waste is accepted and tipper lorry is permitted to leave the STF with the accompanying paperwork, or;
- Waste is not accepted and the unsuitable element of waste load, either partial or complete load is removed by excavator and placed back into the tipper lorry. A rejection form is filled in on-site and both Landfill Manager (LM) and Sales Manager (SM) are informed. It is the duty of FCC to inform the Environment Agency of any rejected loads.

At the end of the formal waste acceptance procedure the soil will be prepared for processing or biotreatment. Coordination of further treatment/processing events is to be decided by the Site Manager/Site Operator.

#### **Chemical Analysis: Waste Input**

Based on visual inspection, sampling frequency will be considered; this is in relation to the volume from each hazardous waste production site. Sampling will be undertaken on soils using composite sampling methods described in BS812.

The chemical analysis of soils generally takes 5-7 days to complete, therefore limited storage times are required. Materials will be placed into treatment as soon as practicable from the receipt of chemical analysis and formal acceptance of the waste.

The range of contaminants for analysis will be based upon the original contaminating substances. A copy of the analysis shall be checked by the PM for verification against the original client data. In the event of non-conformity, the PM shall liaise with the LM and SM, and a decision on the next course of action will be taken.

For avoidance of doubt, the limits for asbestos from laboratory testing will be as follows:

- Chrysotile only: 0.1%
- Other forms of asbestos (or chrysotile and others): 0.01%
- Asbestos debris limited to those which can be removed as Notifiable Non-Licensed Works (NNLW)

The waste will only be formally accepted once initial reception analyses is received in accordance with procedure STF PR02.

### Summary of Waste Reception

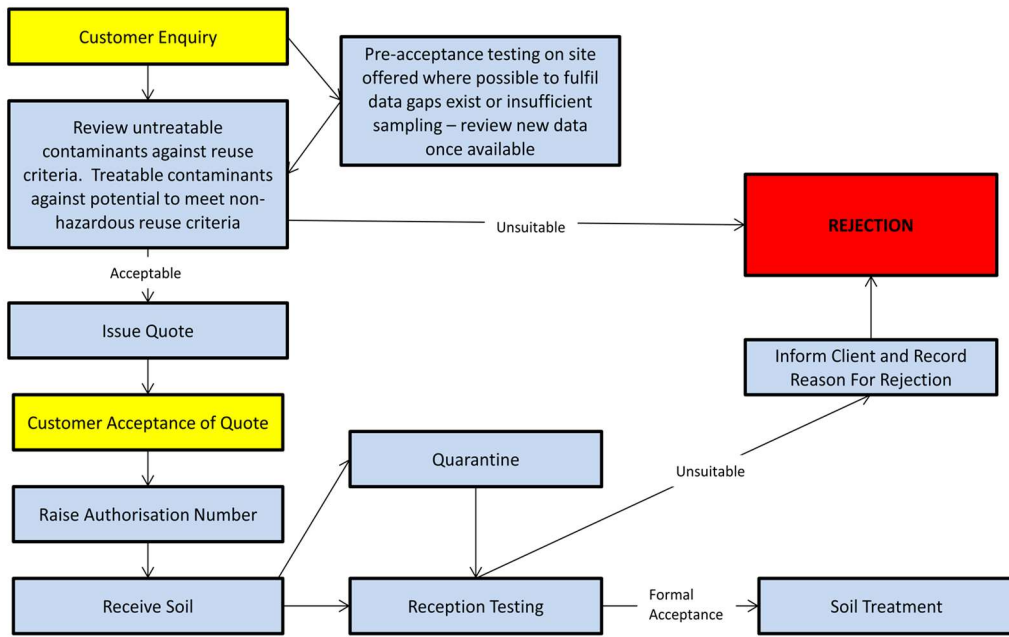
Figure 1 is a flow diagram for the waste reception procedure. The procedure is implemented to ensure that the waste is only formally accepted once visual inspections and chemical analysis of received wastes has been successfully completed. This ensures that any soils that are formally accepted are suitable for further soil processing/treatment. All non-compliant wastes will be rejected.

Figure 1. Summary of Waste Acceptance Procedure

STC-PR02-V2

### Soil Assessment Procedure

STF – PR02 – V2



STC-PR02-V2