

# **CAULMERT LIMITED**

Engineering, Environmental & Planning  
Consultancy Services

## **Daneshill Soils Treatment Facility**

FCC Recycling (UK) Limited

## **Activities & Operating Techniques Report**

### **Environmental Permit Variation Application**

**Prepared by:**

**Caulmert Limited**

14, Farrington Way, Eastwood Link Business Park, Eastwood, Notts, NG16 3BF

**Tel:** 01773 749132

**Fax:** 01773 746280

**Email:** [andystocks@caulmert.com](mailto:andystocks@caulmert.com)

**Web:** [www.caulmert.com](http://www.caulmert.com)

**Doc ref:** 3982-CAU-XX-XX-RP-V-0305-A0.C1

**January 2021**

**APPROVAL RECORD**

**Site:** Daneshill Landfill - Soils Treatment Facility

**Client:** FCC Environment Ltd

**Project Title:** Daneshill Soils Treatment Facility

**Document Title:** Activities & Operating Techniques Report

**Document Ref:** 3982-CAU-XX-XX-RP-V-0305-A0.C1

**Report Status:** **Final**

**Project Manager:** Andy Stocks

**Caulmert Limited:** 14 Farrington Way, Eastwood Link Business Park, Eastwood, Notts, NG16 3BF

**Tel:** 01773 749132

<b>Author</b>	Kellie-Marie P. Burston	<b>Date</b>	15/01/2021
<b>Reviewer</b>	Andy Stocks	<b>Date</b>	15/01/2021
<b>Approved</b>	Andy Stocks	<b>Date</b>	15/01/2021

**DISCLAIMER**

This report has been prepared by Caulmert Limited with all reasonable skill, care and diligence in accordance with the instruction of the above named client and within the terms and conditions of the Contract with the Client.

The report is for the sole use of the above named Client and Caulmert Limited shall not be held responsible for any use of the report or its content for any purpose other than that for which it was prepared and provided to the Client.

Caulmert Limited accepts no responsibility of whatever nature to any third parties who may have been made aware of or have acted in the knowledge of the report or its contents.

No part of this document may be copied or reproduced without the prior written approval of Caulmert Limited.

**TABLE OF CONTENTS**

<b>1. INTRODUCTION .....</b>	<b>2</b>
1.1 Document context .....	2
1.2 Document structure.....	2
<b>2. ACTIVITIES .....</b>	<b>3</b>
2.1 Activities to be varied (Part C3 question 1) .....	3
2.2 Types of waste accepted (Part C3 question 1).....	4
<b>3. EMISSIONS (PART C3 QUESTION 2) .....</b>	<b>6</b>
3.1 Point source emission to air.....	6
3.2 Point source emission to sewers, effluent treatment plants or other transfers off site..	7
3.3 Point source emission to water (other than sewers).....	7
3.4 Point source emission to land.....	7
<b>4. OPERATING TECHNIQUES - LEACHATE TREATMENT .....</b>	<b>8</b>
4.1 Technical standards (Part C3 question 3a) .....	8
4.1 Operating Techniques – Existing Permit (Part C3 question 3a1) .....	8
4.2 General requirements – amenity and accidents (Part C3 question 3b) .....	8
4.3 Types and amounts of raw materials (Part C3 question 3c) .....	9
<b>5. INFORMATION FOR SPECIFIC SECTORS (PART C3 QUESTION 3D) .....</b>	<b>9</b>
5.1 Part C3 Question 1: Pre-acceptance procedures .....	9
5.2 Part C3 Question 2: Waste acceptance procedures .....	10
5.3 Part C3 Question 3: Waste storage procedures and infrastructure .....	10
5.4 Part C3 Question 4: Layout plan .....	10
5.5 Part C3 Question 5: Summary of the treatment activities.....	10
5.6 Part C3 Question 6: Layout plans and process flow diagrams.....	10
<b>6. MONITORING .....</b>	<b>11</b>
6.1 Measures for monitoring point source emissions (Part C3 question 4a) .....	11
<b>7. RESOURCE EFFICIENCY AND CLIMATE CHANGE .....</b>	<b>12</b>
7.1 Basic measures for improving energy-efficiency of activities (Part C3 Question 6a) .....	12
7.2 Breakdown of changes to the energy used and created (Question 6b) .....	12
7.3 Climate-change levy agreement or specific measures (Part C3 Question 6c) .....	12
7.4 Raw and other materials, other substances and water to be used (Part C3 Question 6d)	12
7.5 Compliance with the Council Directive 2006/12/EC on waste (Part C3 Question 6e) ...	12
<b>8. REFERENCES .....</b>	<b>13</b>

**Tables**

Table 1:	Types of activities
Table 2:	Directly Associated Activities
Table 3&3A:	Waste Lists
Table 4:	Technical Standards

**DRAWINGS**

3982-CAU-XX-XX-RP-V-1805	Proposed Site Layout
3982-CAU-XX-XX-RP-V-1806	Proposed Section Drawings

## 1. INTRODUCTION

### 1.1 Document context

1.1.1 This Activities and Operating Techniques Report is in response to the environmental permit application form C3 for bespoke installation permits.

1.1.2 The C3 form requests information about the activities the application relates to and the operating techniques that will apply to them. Information is requested on: -

- a) Types of activities;
- b) Types of waste to be accepted;
- c) Emissions;
- d) Operating techniques including technical standards;
- e) General requirements in relation to amenity and accident risks;
- f) Types and amounts of raw materials;
- g) Information for specific sectors (hazardous and non-hazardous waste recovery and disposal sector);
- h) Monitoring of point source emissions;
- i) Resource efficiency and climate change.

### 1.2 Document structure

1.2.1 This 'Activities and Operating Techniques Report' has been prepared to provide responses to the environmental permit application form part C3 which relates to the issues listed above. To aid cross-referencing between this 'Activities and Operating Techniques Report' and the application form, the various issues are presented in the same order as in the application form and the headings in this document include reference to the specific question number to which the information relates.

## 2. ACTIVITIES

### 2.1 Activities to be varied (Part C3 question 1)

2.1.1 The activities proposed includes physico-chemical and biological waste treatment of hazardous wastes for recovery, together with the temporary storage of hazardous waste.

**Table 1: Types of activities**

Name	Installation Schedule 1 reference	Description of the installation activity	Activity Capacity	Annex I and Annex II codes	Hazardous Waste Treatment Facility
Bioremediation process for hazardous waste	Section 5.3 Part A(1) (a)(i)	Disposal or recovery of hazardous waste with a capacity exceeding 10 tonnes per day involving biological treatment;	29,999 tonnes	R5 D8	29,999 tonnes
Handpicking & Pre-screening of asbestos contaminated soils	S5.3 A(1) (a) (ii)	Disposal or recovery of hazardous waste with a capacity exceeding 10 tonnes per day involving physico-chemical treatment	29,999tonnes	R5 D8	29,999 tonnes
Bioremediation process for Non-hazardous waste	Section 5.4 Part A(1) (a)(i)	Disposal or recovery of non-hazardous waste with a capacity exceeding 10 tonnes per day involving biological treatment;	20,001 tonnes	R5 D8	20,001 tonnes
Temporary Hazardous Waste Storage	S5.6 A (1) (a)	Temporary storage of hazardous waste with a total capacity exceeding 50 tonnes pending any of the activities listed in Sections 5.1, 5.2 and 5.3;	<29,999 tonnes	R5 D8	29,999 tonnes

**Table 2 Directly associated activities**

<b>Directly associated activities</b>	
Name of DAA	Description of the DAA (including which Schedule 1 activity it serves)
Fuel Storage	Storage of diesel.
Water storage	Collection and storage of process water
Storage of Waste	Temporary storage of non-haz waste
Screening waste	Screening of non-hazardous waste to remove oversized material after the completion of bioremediation for use in the restoration areas
<b>For installations that take waste</b>	
Total storage capacity	50,000 tonnes
Annual throughput	Waste treatment: 50,000 t

**2.2 Types of waste accepted (Part C3 question 1)**

2.2.1 The waste types proposed are listed below in Table 3 and 3A. Raw materials for the use as part of the treatment process is detailed in Section 9 'Resource Use – Raw Materials' of the "Treatment Process & SGN 5.06 Indicative BAT review" report document ref: 3982-CAU-XX-XX-RP-V-0306.

**Table 3: Wastes to be accepted for physical treatment of waste**

<b>01</b>	<b>Wastes resulting from exploration, mining, quarrying, and physical and chemical treatment of minerals</b>
<b>01 05</b>	<b>drilling muds and other drilling wastes</b>
01 05 05*	oil-containing drilling muds and wastes
01 05 06*	drilling muds and other drilling wastes containing hazardous substances
<b>05</b>	<b>Wastes from petroleum refining, natural gas purification and pyrolytic treatment of coal</b>
<b>05 01</b>	<b>wastes from petroleum refining</b>
05 01 05*	oil spills
05 01 15*	spent filter clays
<b>13</b>	<b>Oil wastes and wastes of liquid fuels (except edible oils, and those in chapters 05, 12 and 19)</b>
<b>13 05</b>	<b>oil/water separator contents</b>
13 05 01*	solids from grit chambers and oil/water separators
13 05 02*	sludges from oil/water separators
13 05 03*	interceptor sludges
13 05 08*	mixtures of wastes from grit chambers and oil/water separators
<b>17</b>	<b>Construction and demolition wastes (including excavated soil from contaminated sites)</b>
<b>17 05</b>	<b>soil (including excavated soil from contaminated sites), stones and dredging spoil</b>
17 05 03*	soil and stones containing hazardous substances
17 05 04	soil and stones other than those mentioned in 17 05 03
17 05 05*	dredging spoil containing hazardous substances

17 05 06	dredging spoil other than those mentioned in 17 05 05
17 05 07*	track ballast containing hazardous substances
17 05 08	track ballast other than those mentioned in 17 05 07
<b>17 06</b>	<b>Insulation materials and asbestos-containing construction materials</b>
17 06 05*	construction materials containing asbestos
<b>17 09</b>	<b>other construction and demolition wastes</b>
17 09 03*	other construction and demolition wastes (including mixed wastes) containing hazardous substances
17 09 04	mixed construction and demolition wastes other than those mentioned in 17 09 01, 17 09 02 and 17 09 03
<b>17 06</b>	<b>Insulation materials and asbestos-containing construction materials</b>
17 06 05*	construction materials containing asbestos
<b>17 09</b>	<b>other construction and demolition wastes</b>
17 09 03*	other construction and demolition wastes (including mixed wastes) containing hazardous substances
<b>19</b>	<b>Wastes from waste management facilities, off-site waste water treatment plants and the preparation of water intended for human consumption and water for industrial use</b>
<b>19 02</b>	<b>wastes from physico/chemical treatments of waste (including dechromatation, decyanidation, neutralisation)</b>
19 02 04*	premixed wastes composed of at least one hazardous waste – wastes suitable for biological treatment only
19 02 05*	sludges from physico/chemical treatment containing hazardous substances – wastes suitable for biological treatment only
19 02 11*	other wastes containing hazardous substances – wastes suitable for biological treatment only
19 08 13*	sludges containing hazardous substances from other treatment of industrial wastewater
<b>19 13</b>	<b>wastes from soil and groundwater remediation</b>
19 13 01*	solid wastes from soil remediation containing hazardous substances
19 13 03*	sludges from soil remediation containing hazardous substances

**Table 3A: Wastes to be accepted for treatment in the bioremediation process**

<b>01</b>	<b>Wastes resulting from exploration, mining, quarrying, and physical and chemical treatment of minerals</b>
<b>01 05</b>	<b>drilling muds and other drilling wastes</b>
01 05 05*	oil-containing drilling muds and wastes
01 05 06*	drilling muds and other drilling wastes containing hazardous substances
<b>05</b>	<b>Wastes from petroleum refining, natural gas purification and pyrolytic treatment of coal</b>
<b>05 01</b>	<b>wastes from petroleum refining</b>
05 01 05*	oil spills
<b>13</b>	<b>Oil wastes and wastes of liquid fuels (except edible oils, and those in chapters 05, 12 and 19)</b>
<b>13 05</b>	<b>oil/water separator contents</b>
13 05 01*	solids from grit chambers and oil/water separators
13 05 02*	sludges from oil/water separators

13 05 03*	interceptor sludges
13 05 08*	mixtures of wastes from grit chambers and oil/water separators
<b>17</b>	<b>Construction and demolition wastes (including excavated soil from contaminated sites)</b>
<b>17 05</b>	<b>soil (including excavated soil from contaminated sites), stones and dredging spoil</b>
17 05 03*	soil and stones containing hazardous substances
17 05 04	soil and stones other than those mentioned in 17 05 03
17 05 05*	dredging spoil containing hazardous substances
17 05 06	dredging spoil other than those mentioned in 17 05 05
17 05 07*	track ballast containing hazardous substances
17 05 08	track ballast other than those mentioned in 17 05 07
<b>19</b>	<b>Wastes from waste management facilities, off-site waste water treatment plants and the preparation of water intended for human consumption and water for industrial use</b>
<b>19 02</b>	<b>wastes from physico/chemical treatments of waste (including dechromatation, decyanidation, neutralisation)</b>
19 02 04*	premixed wastes composed of at least one hazardous waste – wastes suitable for biological treatment only
19 02 05*	sludges from physico/chemical treatment containing hazardous substances – wastes suitable for biological treatment only
19 02 11*	other wastes containing hazardous substances – wastes suitable for biological treatment only
<b>19 08</b>	<b>wastes from wastewater treatment plants not otherwise specified</b>
19 08 13*	sludges containing hazardous substances from other treatment of industrial wastewater
<b>19 12</b>	<b>wastes from the mechanical treatment of waste (for example sorting, crushing, compacting, pelletising) not otherwise specified</b>
19 12 11*	other wastes (including mixtures of materials) from mechanical treatment of waste containing hazardous substances
<b>19 13</b>	<b>wastes from soil and groundwater remediation</b>
19 13 01*	solid wastes from soil remediation containing hazardous substances
19 13 03*	sludges from soil remediation containing hazardous substances
<b>20</b>	<b>Municipal Wastes (household waste and similar commercial, industrial and institutional wastes) Including separately collected fractions</b>
<b>20 03</b>	<b>Other municipal wastes</b>
20 03 03	Street cleaning residues

### 3. EMISSIONS (PART C3 QUESTION 2)

#### 3.1 Point source emission to air

3.1.1 Air forced down through the biopiles via the extraction pipework system will pass through a biofilter before being released to air.

3.1.2 The blower connects to a manifold with several perforated pipes covered in stone sitting on an impermeable surface. Overlying these pipes is oversize compost or woodchip mixture, nutrients and small amount of contaminated soil (<5%) to inoculate the biofilter placed to an average height of 1.5m. The compost/nutrient/soil mixture is overlain by an



irrigation pipe network on top to maintain the moisture content and covered with a tarpaulin to ensure the biofilter does not dry out. It is then tested every month to ensure the process parameters are within the optimal range. Olfactory odour checks are also undertaken daily.

### **3.2 Point source emission to sewers, effluent treatment plants or other transfers off site**

3.2.1 Water draining from beneath the biopiles or from the impermeable pad will pass into a holding tank, waters will be treated and stored prior to reuse in the biotreatment works or collection and disposed off site to a suitable treatment facility.

3.2.2 There will be no other point source emissions.

### **3.3 Point source emission to water (other than sewers)**

3.3.1 There are existing surface water emission points relating to the landfill activity, however no direct discharge to surface water is proposed as part of this activity.

### **3.4 Point source emission to land**

3.4.1 Treated soils will be used for the restoration of the landfill as treatment for recovery purposes; no disposal will be carried out with the exception of inclusions removed during the physical treatment of soils. This activity will be permitted as a recovery operation through a Waste Recovery Restoration Plan associated with the landfill activity.

## 4. OPERATING TECHNIQUES - LEACHATE TREATMENT

### 4.1 Technical standards (Part C3 question 3a)

**Table 4: Technical standards – waste treatment**

Description of Schedule 1 activity or directly associated activity	Relevant technical guidance note or Best available techniques as described in BAT conclusions under IED	Document reference
Activity ref A1: Activities detailed in Table 1	Sector Guidance Note IPPC S5.06: Guidance for the Recovery and Disposal of Hazardous and Non-Hazardous Waste.  Best Available Techniques (BAT) Reference Document for Waste treatment Industrial Emissions Directive (Integrated Pollution Prevention and Control)	Process description in section 5 of this document & 'SGN 5.06 indicative BAT review' (doc. ref. 3982-CAU-XX-XX-RP-V-0306) included within this application  H1 Assessment: - Amenity and Accident Risk Assessment (document ref 3982-CAU-XX-XX-RP-V-0303) FCC Management System

4.1.1 For many installation activities, a 'sector guidance note' (SGN) have been published which sets out in detail the indicative 'best available techniques' (BAT) standards for how to carry out those activities. The sector guidance notes are based on European BAT reference document (BREFs) that are intended to ensure European consistency in the understanding of what is BAT for a certain sector.

4.1.2 There is a specific SGN for waste treatment, which is 'Sector Guidance Note IPPC S5.06. Guidance for the Recovery and Disposal of Hazardous and Non-Hazardous Waste' and 'Best Available Techniques (BAT) Reference Document for Waste Treatment' IPPC, 2018.

### 4.1 Operating Techniques – Existing Permit (Part C3 question 3a1)

4.1.1 Operating techniques relating to the landfill operation will remain unchanged. The acceptance of soils from the STF to be used in the restoration of the landfill.

### 4.2 General requirements – amenity and accidents (Part C3 question 3b)

4.2.1 It is a general requirement for all applications to consider the risk of emissions in relation to possible accidents, fugitive emissions, odour and noise and vibration. Risk assessments were carried out using the Environment Agency's templates for amenity and accident risk assessments as set out in guidance:

'Daneshill Noise Impact Assessment' doc ref: R20.13365-2-AG

'Amenity and Accidents Risk Assessment' doc ref: 3982-CAU-XX-XX-RP-V-0303

'Odour Management Plan' doc ref: 3982-CAU-XX-XX-RP-V-0308

'Emissions Management Plan doc ref: 3982-CAU-XX-XX-RP-V-0309

### **4.3 Types and amounts of raw materials (Part C3 question 3c)**

#### **Raw materials**

4.3.1 The use of raw materials is proposed as part of the treatment process.

#### Raw materials other than water

4.3.2 The types and quantities of raw materials used are detailed within the BAT assessment but consist primarily of the following substances:

- Standard NPK fertiliser 25:05:05 ratio, typically added at 1kg/tonne of soil per application so for 3 applications for 29,999t of hazardous hydrocarbon impacted soil this would be 100t/yr of nutrient use as a worst-case scenario.
- An organic additive such as woodchip is occasionally added, anticipated a maximum of up to 1,500tonnes per annum, a maximum of ~5% amendment to clayey soils to break up the cohesive nature of the soils and aid aeration. The biodegradation of the organic contaminants can be enhanced by addition of very low concentrations of organic material such as woodchip. Other raw materials include the use of street cleaning residues and off-specification compost. Use of these raw materials replaces virgin materials such as manufactured fertiliser and using 'waste raw materials' which would otherwise be landfilled. – Further details are included in Section 9 'Resource Use- Raw Materials' of the 'Treatment Process & SGN 5.06 Indicative BAT review, document ref: 3982-CAU-XX-XX-RP-V-0306.
- Flocculants maybe used to remove suspended solids from surface water runoff
- Sand and activated carbon used as part of the water treatment process

4.3.3 The operator will select the least harmful products to use in the operation wherever possible.

4.3.4 The operator will keep Material Safety Data Sheets for all products used at the facility and will monitor the quantity of materials used. This will provide data for regular reviews of raw materials usage at the facility.

#### Water use

4.3.5 Water usage is small and limited to, general cleaning and domestic use.

## **5. INFORMATION FOR SPECIFIC SECTORS (PART C3 QUESTION 3D)**

### **5.1 Part C3 Question 1: Pre-acceptance procedures**

5.1.1 Detailed within section 5 of Treatment Description & SGN 5.06 Indicative BAT Review.

**5.2 Part C3 Question 2: Waste acceptance procedures**

5.2.1 Detailed within Treatment Description & SGN 5.06 Indicative BAT Review.

**5.3 Part C3 Question 3: Waste storage procedures and infrastructure**

5.3.1 Detailed within Treatment Description & SGN 5.06 Indicative BAT Review

**5.4 Part C3 Question 4: Layout plan**

5.4.1 Please refer to 'Proposed Site Layout' plan drawing ref: 3982-CAU-XX-XX-DR-V-1805 which details the proposed layout and treatment operations of the site. Drawing ref: 3982-CAU-XX-XX-DR-V-1806 details the proposed section drawings of the treatment pads and drainage systems.

**5.5 Part C3 Question 5: Summary of the treatment activities**

5.5.1 Detailed within section 2 of Treatment Description & SGN 5.06 Indicative BAT Review

**5.6 Part C3 Question 6: Layout plans and process flow diagrams**

5.6.1 Detailed within section 2 of Treatment Description & SGN 5.06 Indicative BAT Review

## 6. MONITORING

### 6.1 Measures for monitoring point source emissions (Part C3 question 4a)

#### **Emissions to air**

- 6.1.1 Daily olfactory monitoring of biofilter is proposed in addition to the biofilter sampling and testing. See section 7 of the Treatment Description & SGN 5.06 Indicative BAT Review. In addition, particulate asbestos fibre monitoring will be carried out during asbestos processing operations, albeit this has not been shown to be elevated above the detection limit at any point during asbestos impacted soils treatment on the Operator's other site.

#### **Emissions to sewers, effluent treatment plants or other transfers off site**

- 6.1.2 Excess process and surface water will be directed to on-site holding tanks for treatment prior to any reuse in the biotreatment works with any surplus collected and disposed of at a suitable treatment facility.

#### **Emissions to water (other than sewers)**

- 6.1.3 There are no discharges to surface water resulting from this application.

## **7. RESOURCE EFFICIENCY AND CLIMATE CHANGE**

### **7.1 Basic measures for improving energy-efficiency of activities (Part C3 Question 6a)**

- 7.1.1 The company will operate in accordance with ISO50001 Energy Management System.
- 7.1.2 Please refer to treatment process description & SGN 5.06 indicative BAT review document (Ref: 3982-CAU-XX-XX-RP-V-0306) included with this application for further detail.

### **7.2 Breakdown of changes to the energy used and created (Question 6b)**

- 7.2.1 The anticipated changes in energy use are not considered to be significant.

### **7.3 Climate-change levy agreement or specific measures (Part C3 Question 6c)**

- 7.3.1 Not applicable to this application.

### **7.4 Raw and other materials, other substances and water to be used (Part C3 Question 6d)**

#### Raw materials other than water

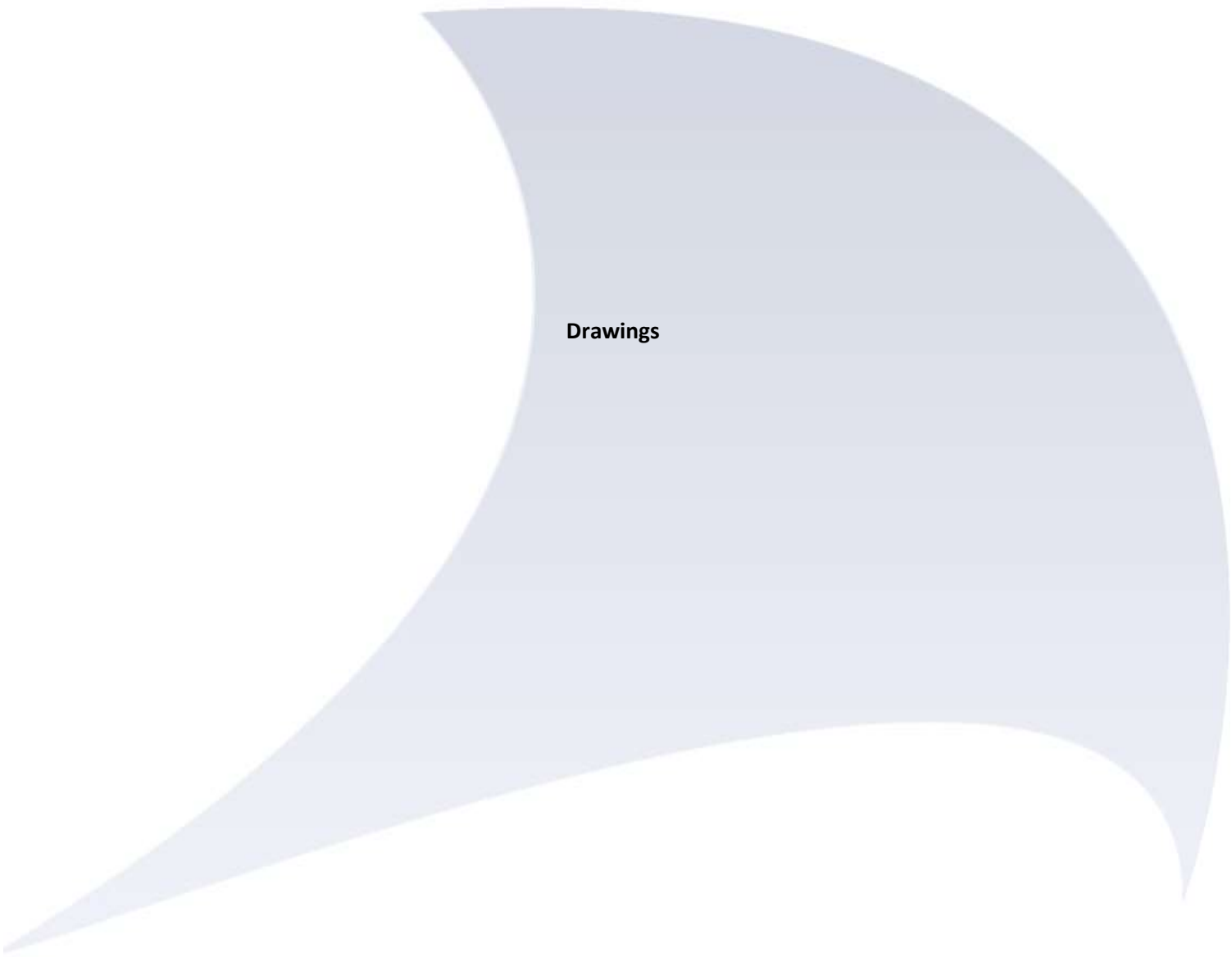
- 7.4.1 The types and quantities of raw materials were provided in response to question 3c.
- 7.4.2 Raw materials use within the treatment facility are detailed in section 4.3.
- 7.4.3 The operator will select the least harmful products to use in the operation wherever possible.
- 7.4.4 The operator will keep Safety Data Sheets (SDS) for all products used at the facility and will monitor the quantity of materials used. This will provide data for regular reviews of raw materials usage at the facility.

### **7.5 Compliance with the Council Directive 2006/12/EC on waste (Part C3 Question 6e)**

- 7.5.1 With respect to the Waste Framework Directive, the installation is operated to optimise efficiency with regards to the hierarchical approach required by the Directive.
- 7.5.2 In relation to the prevention of waste generation these activities onsite do not generate significant volumes of additional waste. Treated soils will be used in the restoration of the landfill which will be undertaken as a recovery activity.

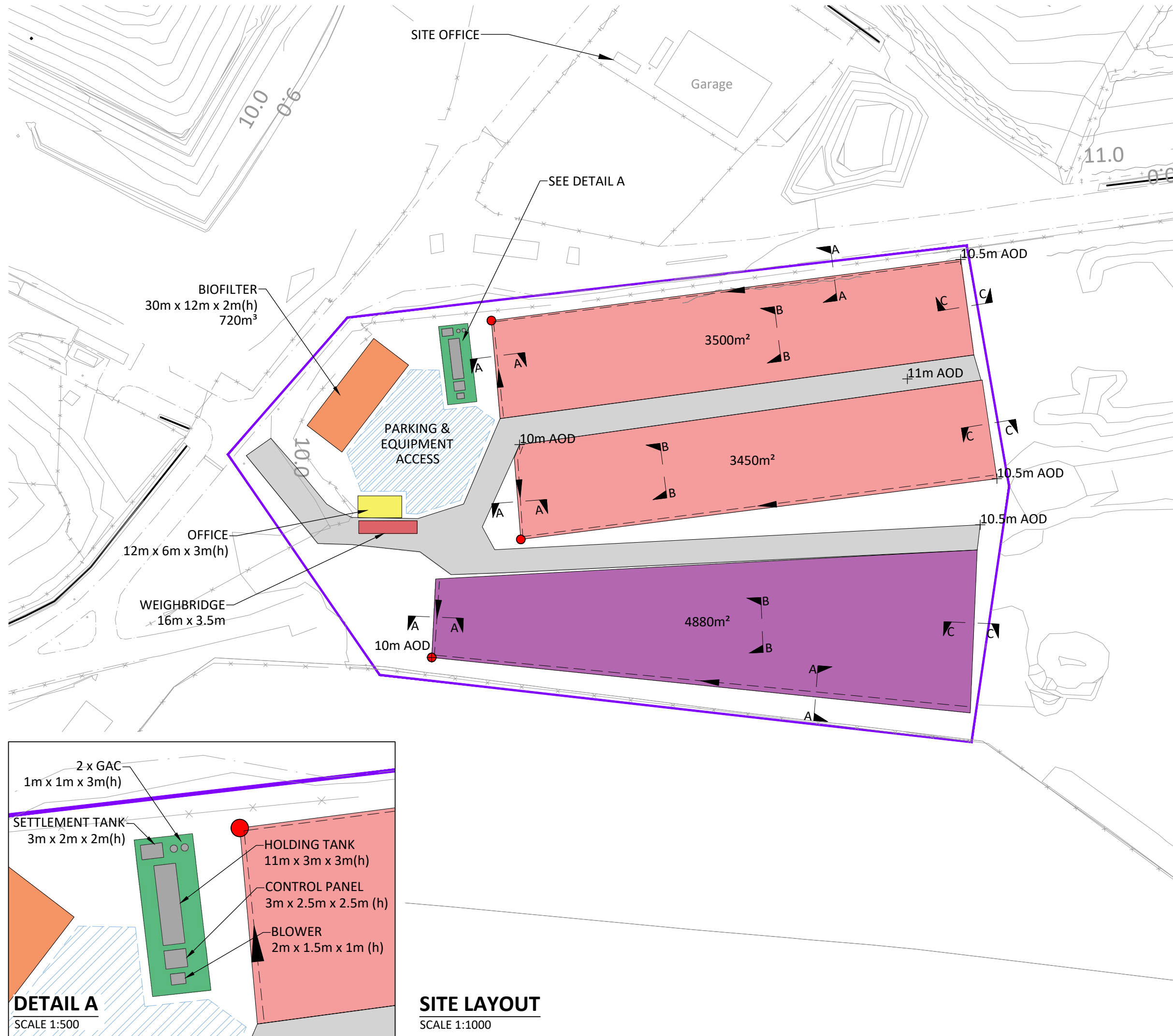
## 8. REFERENCES

- 8.1.1 Directive 2008/98/EC of the European and of the Council of 19 November 2008 on waste and repealing certain Directives.
- 8.1.2 The Environmental Permitting (England and Wales) Regulations 2016
- 8.1.3 Environment Agency (2007): Sector Guidance Note IPPC S5.06. Guidance for the Recovery and Disposal of Hazardous and Non-Hazardous Waste.
- 8.1.4 Environment Agency (2013): Understanding the meaning of regulated facility. RGN 2 version 3.0.
- 8.1.5 Environment Agency (2017): Application for an environmental permit – Part C3 – variation to a bespoke installation permit. Version 9, January 2017.



**Drawings**





**NOTES**

1. DO NOT SCALE FROM THIS DRAWING, WORK FROM FIGURED DIMENSIONS ONLY. ALL DIMENSIONS ARE IN METRES AND ALL LEVELS ARE IN METRES ABOVE ORDNANCE DATUM UNLESS NOTED OTHERWISE.
2. THIS DRAWING IS TO BE READ IN CONJUNCTION WITH ALL RELEVANT ARCHITECTS, ENGINEERS AND SPECIALIST DRAWINGS AND SPECIFICATIONS.
3. DESIGN BASED ON PROVECTUS DRAWING - DANESHILL 1
4. SECTIONS SHOWN ON DRAWING 3982-CAU-XX-XX-DR-C-1806

**LEGEND**

- AREA OF PROPOSED ACTIVITY
- LEACHATE & DRAINAGE FLOW DIRECTION
- SECTION LINES
- BIOTREATMENT SCREENING AND PROCESSING AREA
- SCREENING / PROCESSING
- ACCESS ROAD
- WATER COLLECTION & PUMPING CHAMBER

P2	LEGEND UPDATED	EJD	KB	AS	24.03.20
P1	ISSUED FOR INFORMATION	EJD	AS	AS	06.02.20
REV	MODIFICATIONS	BY	RE	AP	DATE
PURPOSE OF ISSUE <b>FOR INFORMATION</b>					STATUS <b>S2</b>

CLIENT:



PROJECT:

**DANESHILL  
SOILS TREATMENT  
FACILITY**

TITLE:

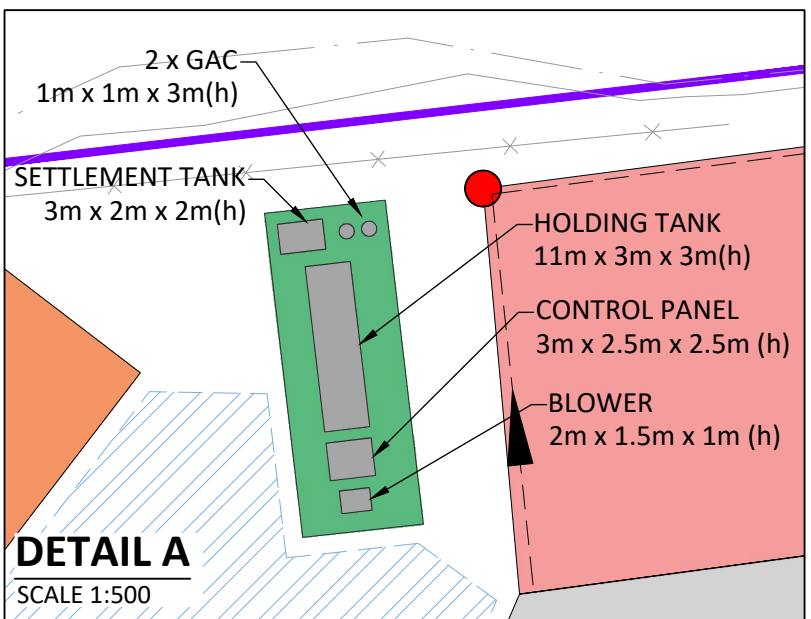
**PROPOSED  
LAYOUT  
PLAN**

DESIGNED BY <b>JC</b>	DRAWN BY <b>EJD</b>	REVIEWED BY <b>JC</b>	AUTHORISED BY <b>JC</b>
DATE <b>04.02.2020</b>	SCALE @ A3 <b>AS SHOWN</b>	JOB REF: <b>3982</b>	REVISION <b>P2</b>

DRAWING NUMBER  
**3982-CAU-XX-XX-DR-1805**



WWW.CAULMERT.COM

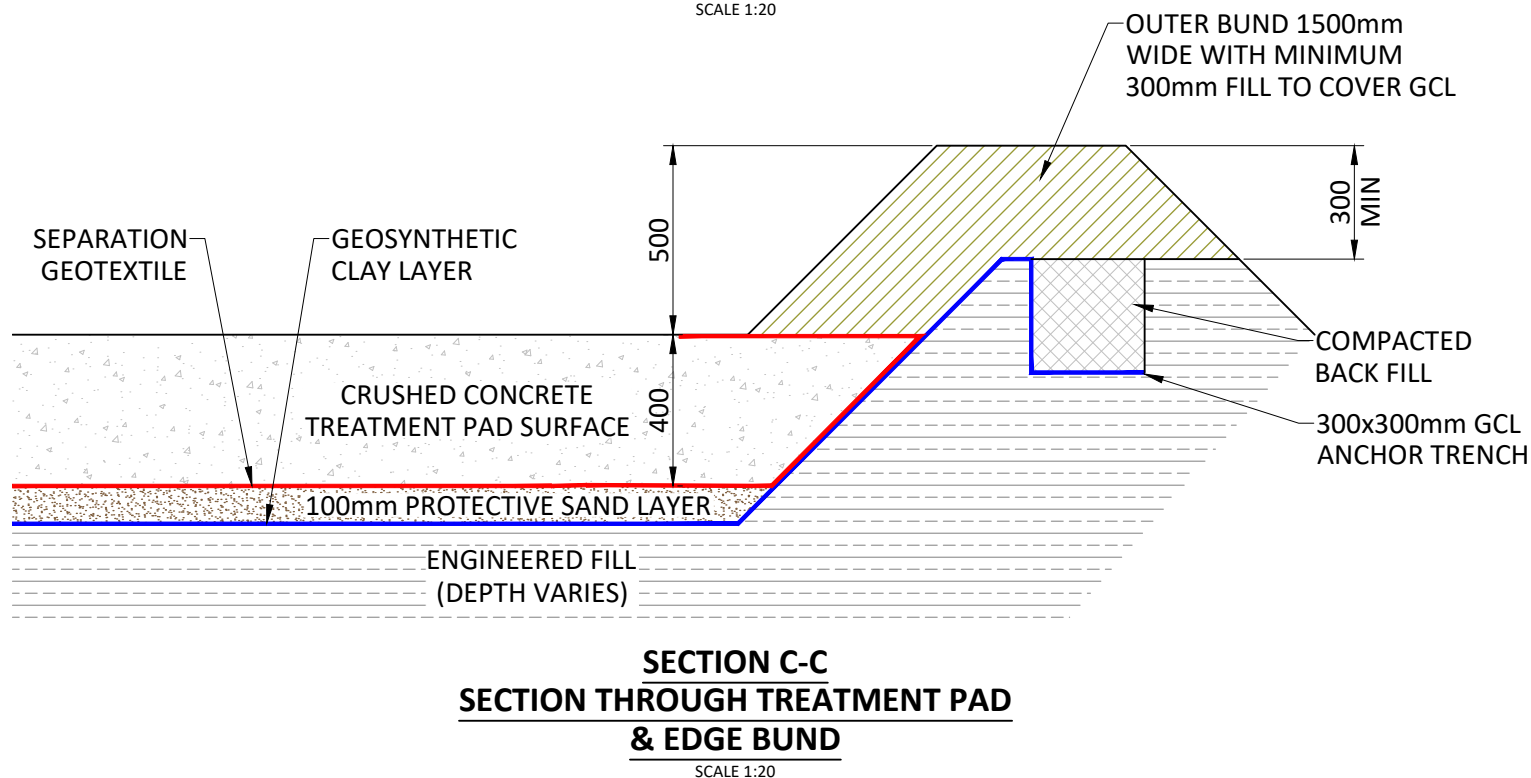
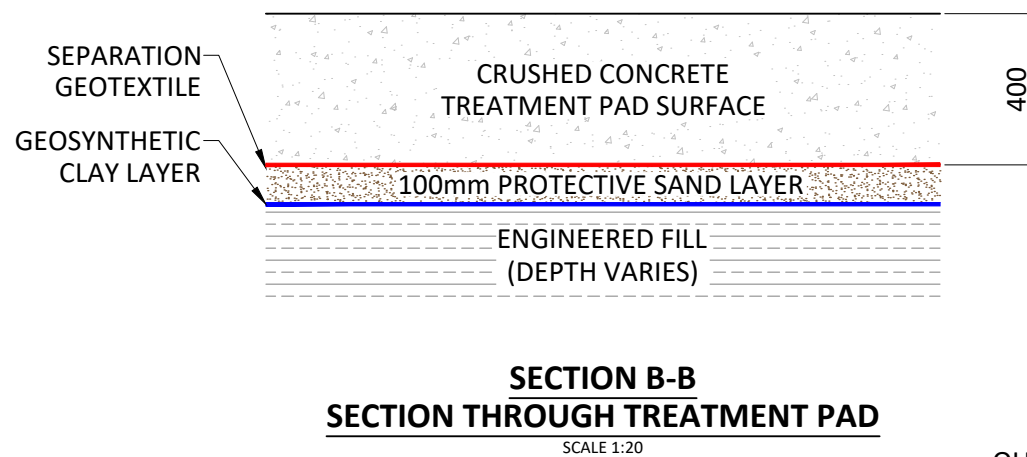
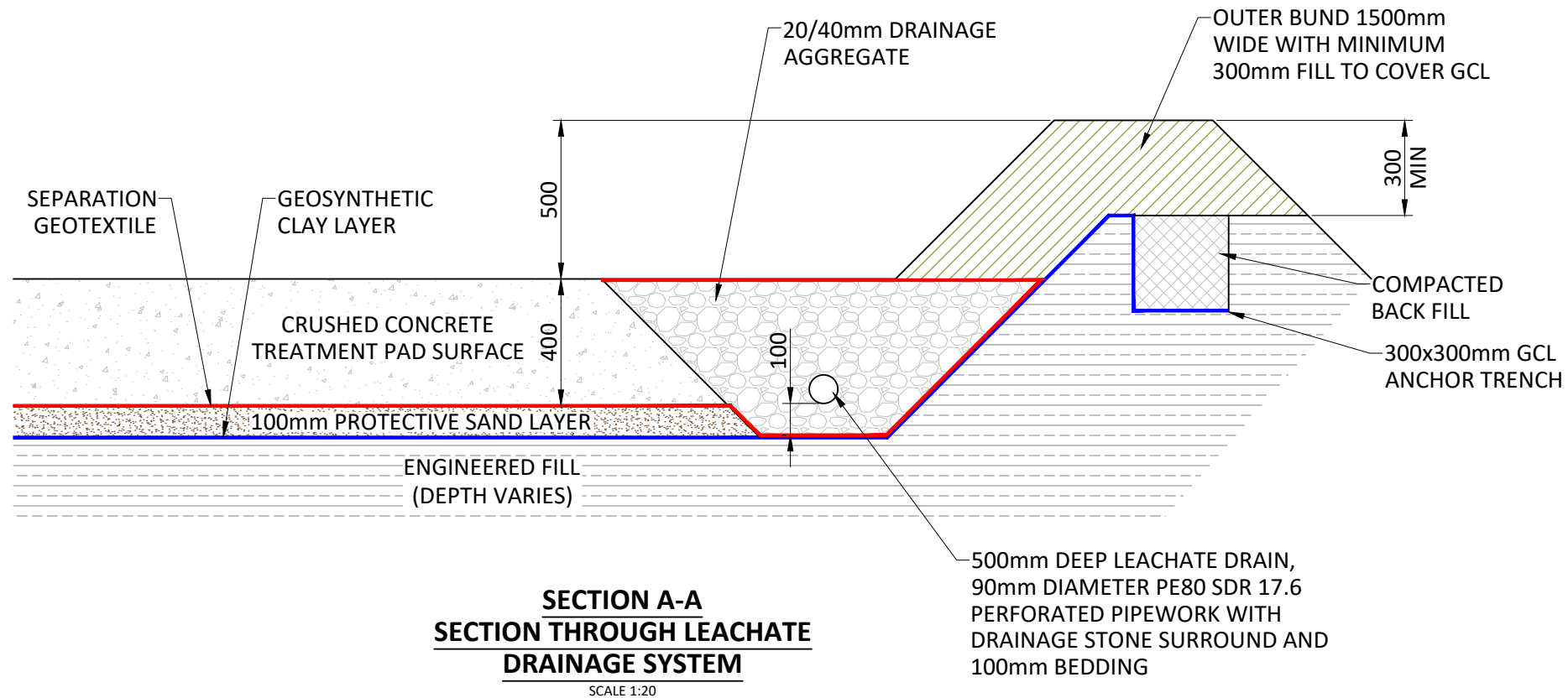


**SITE LAYOUT**  
SCALE 1:1000

**DETAIL A**  
SCALE 1:500



© COPYRIGHT CAULMERT LIMITED - NOT TO BE COPIED OR REPRODUCED IN ANY WAY OR FORM WITHOUT PRIOR WRITTEN CONSENT FROM CAULMERT LIMITED

Registered Office: Intec, Parc Menai, Bangor, Gwynedd, LL57 4FG Company Registered No: 06716319



**NOTES**

1. DO NOT SCALE FROM THIS DRAWING, WORK FROM FIGURED DIMENSIONS ONLY. ALL DIMENSIONS ARE IN METRES AND ALL LEVELS ARE IN METRES ABOVE ORDNANCE DATUM UNLESS NOTED OTHERWISE.
2. THIS DRAWING IS TO BE READ IN CONJUNCTION WITH ALL RELEVANT ARCHITECTS, ENGINEERS AND SPECIALIST DRAWINGS AND SPECIFICATIONS.
3. SECTIONS POSITIONS SHOWN ON DRAWING 3982-CAU-XX-XX-DR-C-1805

P1	ISSUED FOR INFORMATION	EJD	AS	AS	06.02.20
REV	MODIFICATIONS	BY	RE	AP	DATE
PURPOSE OF ISSUE <b>FOR INFORMATION</b>					STATUS <b>S2</b>
CLIENT: 					
PROJECT: <b>DANESHILL SOILS TREATMENT FACILITY</b>					
TITLE: <b>SECTIONS DRAWING</b>					
DESIGNED BY <b>JC</b>	DRAWN BY <b>EJD</b>	REVIEWED BY <b>JC</b>	AUTHORISED BY <b>JC</b>		
DATE <b>05.02.2020</b>	SCALE @ A3 <b>AS SHOWN</b>	JOB REF: <b>3982</b>	REVISION <b>P1</b>		
DRAWING NUMBER <b>3982-CAU-XX-XX-DR-C-1806</b>					
 <a href="http://WWW.CAULMERT.COM">WWW.CAULMERT.COM</a>					



Registered Office: Intec, Parc Menai, Bangor, Gwynedd, LL57 4FG

**Tel:** 01248 672666

**Fax:** 01248 672601

**Email:** [contact@caulmert.com](mailto:contact@caulmert.com)

**Web:** [www.caulmert.com](http://www.caulmert.com)