

FAO Gareth Leigh
Head of Energy Infrastructure Planning and Delivery
Business, Energy and Industrial Strategy
1 Victoria Street
London SW1H 0ET

**Morgan Offshore Wind Farm
Morecambe Offshore Windfarm
Request for direction under section 35 of the Planning Act 2008**

Dear Sir,

Thank you for your letter of 30th August 2022 requesting further information in the form of:

- A plan showing an indicative plan of the transmission assets which are the subject of our s.35 request; and
- Further details of engagement with the relevant local planning authorities (the LPAs).

Two plans showing the indicative location of the transmission assets which are the subject of our s.35 request are enclosed with this letter.

As stated in para 4.6 of the s35 application supporting statement, the Applicants have contacted the relevant LPAs to inform them of their intention to apply to BEIS for a section 35 direction for the transmission assets for the Morgan and Morecambe OWFs.

In addition, the following LPAs were consulted by the Planning Inspectorate in respect of the EIA generation scoping requests for either (or both) Morgan OWF and Morecambe OWF, where the intention for the transmission assets to be consented separately was clear.

- Cumbria County Council
- Barrow in Furness Borough Council
- Copeland Borough Council
- Blackpool Council
- Fylde Borough Council
- Lancashire County Council.

South Ribble Borough Council and Preston City Council were not consulted at that stage but have since been contacted directly by the Applicants.

To date no detailed responses or concerns have been raised by the LPAs about the proposed s35 direction or approach to consenting the generation and transmission assets. The Applicants are currently in the process of setting up meetings to further discuss the projects with the LPAs.

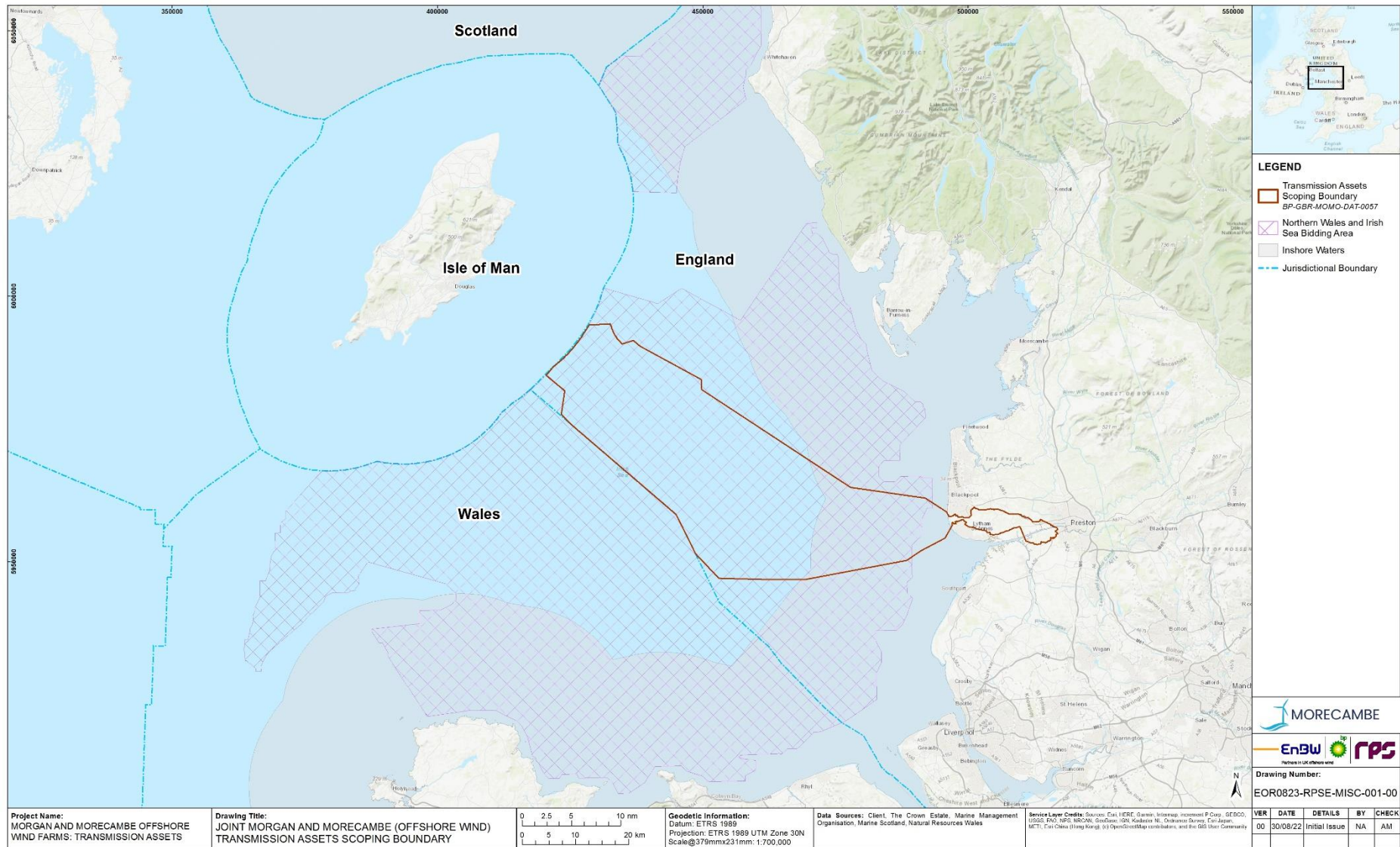
For and on behalf of

MORGAN OFFSHORE WIND FARM
acting by:

Victoria Ridyard
.....
as Consent Lead

MORECAMBE OFFSHORE WINDFARM
acting by:

Amy Parry
.....
as Project Manager



LEGEND

-  Transmission Assets
-  Scoping Boundary
BP-GBR-MOMO-DAT-0057
-  Northern Wales and Irish Sea Bidding Area
-  Inshore Waters
-  Jurisdictional Boundary

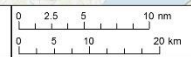


Drawing Number:
EOR0823-RPSE-MISC-001-00

VER	DATE	DETAILS	BY	CHECK
00	30/08/22	Initial Issue	NA	AM

Project Name:
MORGAN AND MORECAMBE OFFSHORE WIND FARMS: TRANSMISSION ASSETS

Drawing Title:
JOINT MORGAN AND MORECAMBE (OFFSHORE WIND) TRANSMISSION ASSETS SCOPING BOUNDARY



Geodetic Information:
Datum: ETRS 1989
Projection: ETRS 1989 UTM Zone 30N
Scale@379mmx231mm: 1:700,000

Data Sources: Client, The Crown Estate, Marine Management Organisation, Marine Scotland, Natural Resources Wales

Service Layer Credits: Sources: Esri, HERE, DeLorme, Intermap, increment P Corp., GEBCO, USGS, FNO, NPS, NRCAN, EsriGeo, IGN, Swire, NGA, OpenStreetMap contributors, and the GIS User Community

