

Air Quality and Dust Monitoring Monthly Report – November 2023

Stratford-on-Avon District Council



Department for Transport

High Speed Two (HS2) Limited has been tasked by the Department for Transport (DfT) with managing the delivery of a new national high speed rail network. It is a non-departmental public body wholly owned by the DfT.

High Speed Two (HS2) Limited,
Two Snowhill
Snow Hill Queensway
Birmingham B4 6GA

Telephone: 08081 434 434

General email enquiries: HS2enquiries@hs2.org.uk

Website: www.gov.uk/hs2

A report prepared by EWCs and MWCCs on behalf of HS2 Ltd.

High Speed Two (HS2) Limited has actively considered the needs of blind and partially sighted people in accessing this document. The text will be made available in full on the HS2 website. The text may be freely downloaded and translated by individuals or organisations for conversion into other accessible formats. If you have other needs in this regard please contact High Speed Two (HS2) Limited.

© High Speed Two (HS2) Limited, 2021, except where otherwise stated.

Copyright in the typographical arrangement rests with High Speed Two (HS2) Limited.

This information is licensed under the Open Government Licence v2.0. To view this licence, visit www.nationalarchives.gov.uk/doc/open-government-licence/version/2 **OGI** or write to the Information Policy Team, The National Archives, Kew, London TW9 4DU, or e-mail: psi@nationalarchives.gsi.gov.uk. Where we have identified any third-party copyright information you will need to obtain permission from the copyright holders concerned.



Printed in Great Britain on paper containing at least 75% recycled fibre.

Monthly Summary

- 1.1.1 This Summary Report is published in fulfilment of commitments detailed in the High-Speed Rail (London-West Midlands) Environmental Minimum Requirements, Annex 1: Code of Construction Practice, for the nominated undertaker to present the results of air quality and dust monitoring undertaken in Stratford-on-Avon District (SoADC) during November 2023.
- 1.1.2 Figure 1 in Appendix A present the current worksites together with the dust monitoring locations.
- 1.1.3 This summary should be read in conjunction with the overview monitoring report monthly available from www.gov.uk/government/collections/monitoring-the-environmental-effects-of-hs2, which highlights: the applicable standards and guidance, as well as the air quality and dust monitoring methodologies to be implemented by nominated undertakers throughout construction.
- 1.1.4 The current worksites, as presented in Appendix A, Figure 1, include:

Long Itchington Wood North Portal (Sublot 1A)

- Compound roads – White lining (BBV Surface team).
- CCTV Relocation (MAC electric).
- Install Pit bottom pumps (Service crossing 3).
- Silt Fencing (Sublot 2 Drainage and North Portal (NP) Site team).
- Road/Walkway barrier install/tidy.
- Ridgeway Lane - Road repair.
- Compound - Road repair.
- Tunnel Segment Repair - Phase 2.
- Setting Out or Collars (Control Point 1 and Control Point 2).
- PJ Davidson (PJD) access prep - Cleaning and Ramps.
- PJD - Drainage install.
- Relocate services up and over (No Access to Tunnel during (8 hours)).

Southam worksite

- Pond maintenance
- Topsoil stripping and material movement
- Bulk earthworks Southam Cutting, Windmill Hill & Ladbroke Cutting
- Southam Embankment bulk earthworks and pre-cast concrete culvert installation
- Embankment fill
- Pouring of pile cap at Lower Radbourne Farm AOB
- Formwork at Lower and Upper Radbourne viaducts
- Crushing and screening activities at Southam

- Sheet piling at Oxford Canal Viaduct
- Piling at Oxford canal Viaduct
- River Itchen Re-alignment works.

1.1.5 Three (3) dust monitors are installed around these worksites, where works are underway. These sites returned a medium dust risk rating.

1.1.6 The dust monitoring location and results are presented in Appendix B, Table 1, together with line charts of monthly data from each dust monitor presented in Figure 2. All continuous dust monitoring is undertaken using indicative monitors. Despite being Environment Agency (MCERTS) certified, indicative monitors carry a higher level of uncertainty than reference monitors, and therefore cannot be strictly compared with Air Quality Standards for human health and the environment. The purpose of the monitoring undertaken is to ensure the effectiveness of the on-site mitigation.

1.1.7 The trigger level for PM₁₀ concentrations of 190 µg/m³, over a 1-hour period, in accordance with the updated guidance document '*Guidance on Monitoring in the Vicinity of Demolition and Construction Sites – (October 2018)*' has been applied.

1.1.8 No (0) dust trigger alerts were recorded during the monitoring period (November 2023).

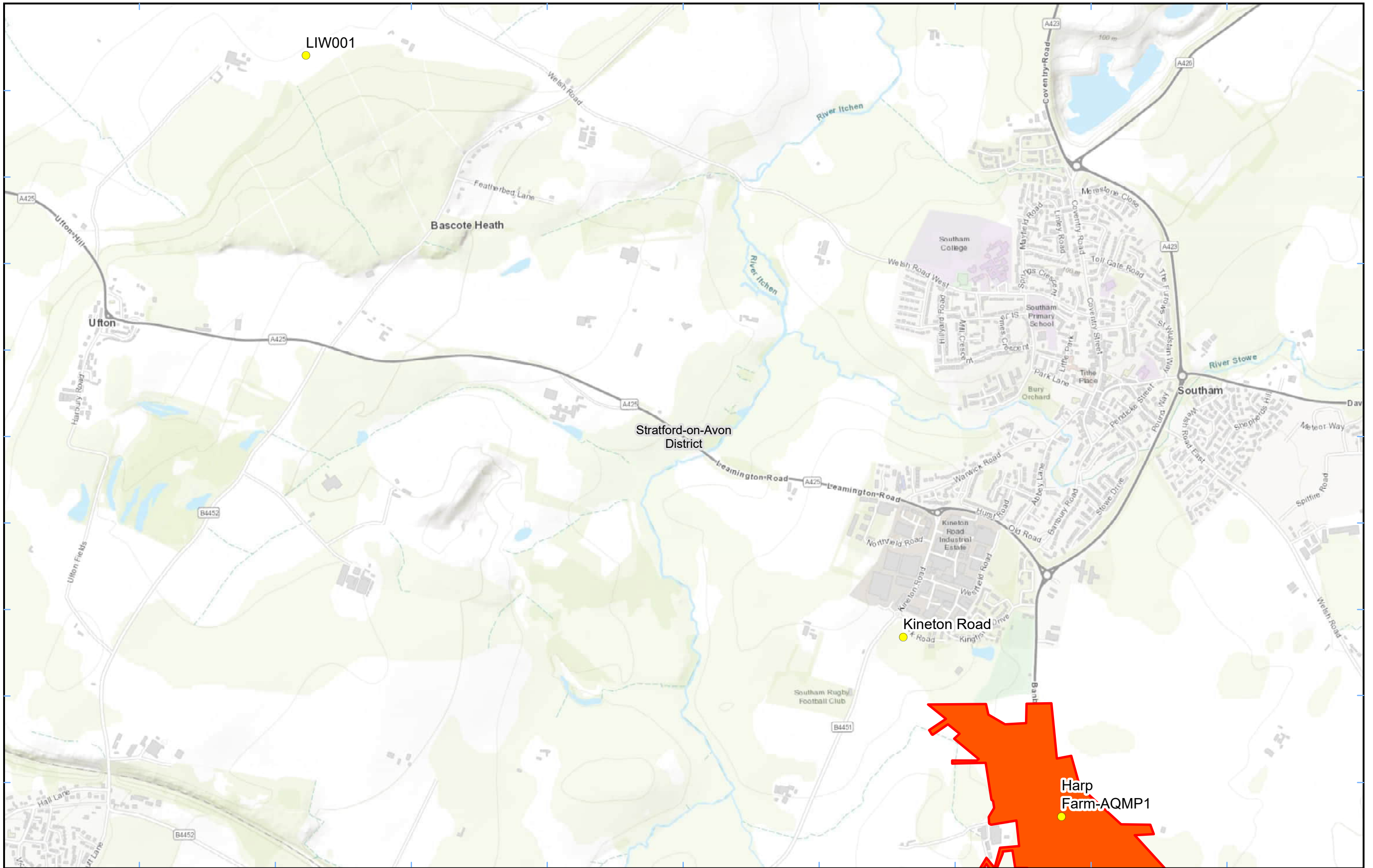
1.1.9 Data capture was below 90% for the Kineton Road monitor due to lack of solar charge.

1.1.10 There were no (0) complaints received during the reporting period (November 2023).

Appendix A – Worksites and Monitoring Locations

Figure 1: Worksites and Monitoring Locations within SoADC





Legend
 ● Dust Monitor
 □ District Borough Unitary Boundaries
 ■ Worksite

Service Layer Credits: Sources: Esri, HERE, Garmin, Intermap, increment P Corp., GEBCO, USGS, FAO, NPS, NRCAN, GeoBase, IGN, Kadaster NL, Ordnance Survey, Esri Japan, METI, Esri China (Hong Kong), (c) OpenStreetMap contributors, and the GIS User Community

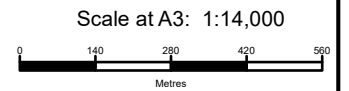
Map Number
 Map Name
**Worksite and Monitoring Locations
 In SoADC (Sheet 1)**
 Stratford-on-Avon District Council



HS2 Ltd accept no responsibility for any circumstances, which arise from the reproduction of this map after alteration, amendment or abbreviation or if it is issued in part or issued incomplete in any way.



Registered in England. Registration number 06791686.
 Registered office: 2 Snowhill, Queensway,
 Birmingham B4 6GA.
 © Crown copyright and database rights 2023.
 Ordnance Survey Licence Number 100049190.



Doc Number:

Date: 06/07/23

Appendix B – Dust Monitoring Results

Table 1: Dust Monitoring Locations and Results

Monitoring site ID	Coordinates (X,Y)	Location description	Dust risk rating for site	Monitoring site active during period	Change to site since previous period report	Mean 1-hour PM10 concentration (µg/m3)	Minimum 1-hour PM10 concentration (µg/m3)	Maximum 1-hour PM10 concentration (µg/m3)	Number of 1-hour periods exceeding trigger level of 190 µg/m3	Data capture (%)
LIW001	438656, 263180	Long Itchington Wood North Portal, at boundary with Long Itchington and Ufton Woods SSSI.	M	Yes	No	6.4	0.1	56.1	0	99.9
Harp Farm-AQMP1	441738, 260075	Site boundary adjacent property on Harp Farm	M	Yes	Yes	7.7	1.0	73.0	0	90.1
Kineton Rd	441092, 260808	Adjacent to Kineton Road roundabout	M	Yes	Yes	7.1	1.0	49.0	0	78.5

Air Quality and Dust Monitoring Summary Report, November 2023
 Stratford-on-Avon District Council
 Figure 2: Construction dust 1-hour mean indicative PM₁₀ concentration for all dust monitors

