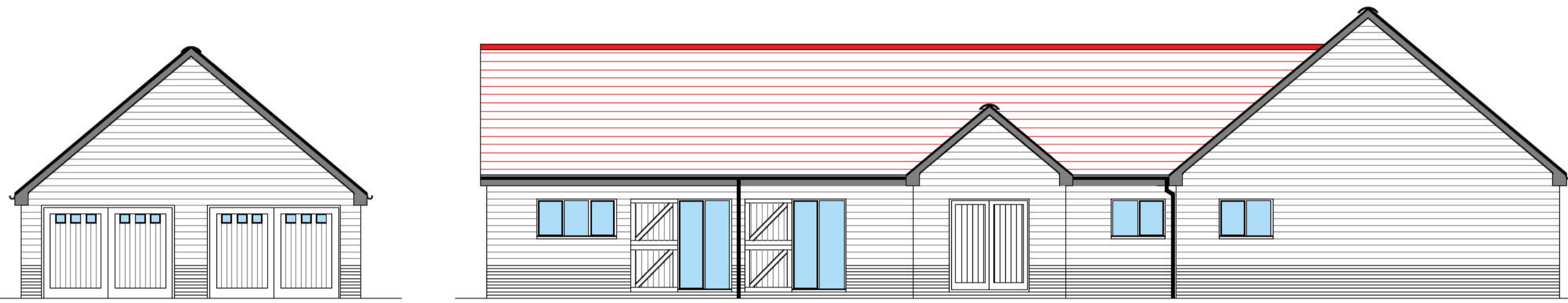
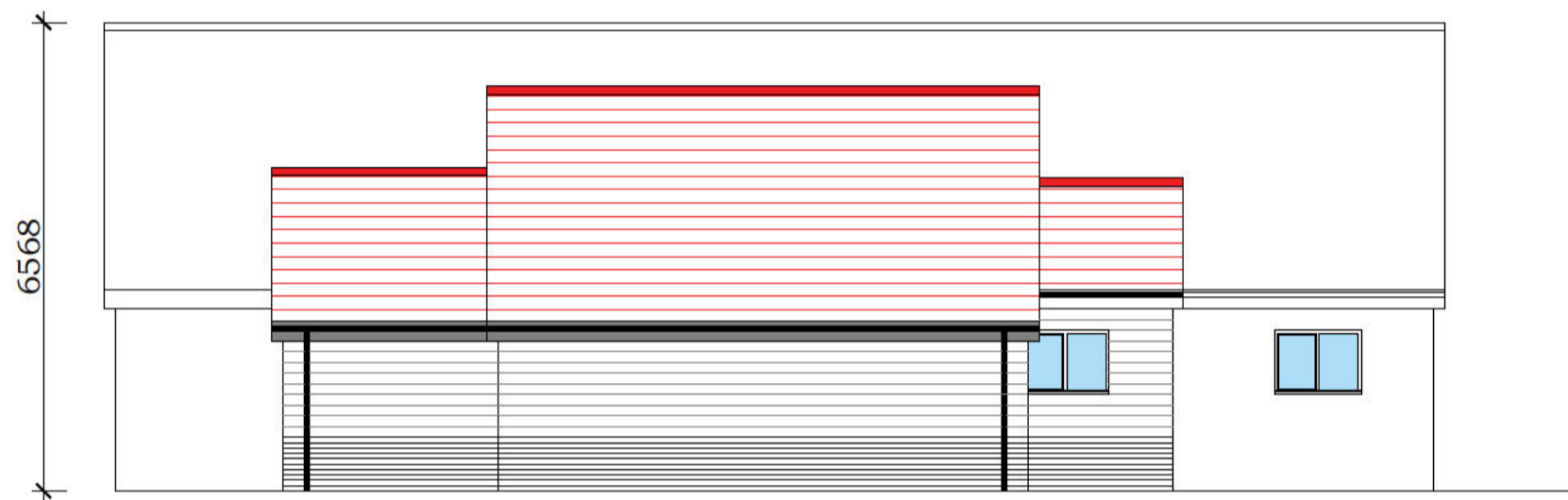


At Building Regulation stage each dwelling will be assessed separately for the optimum use of roof mounted solar panels to inform the energy use and SAP calculations in order to satisfy Approved document L.



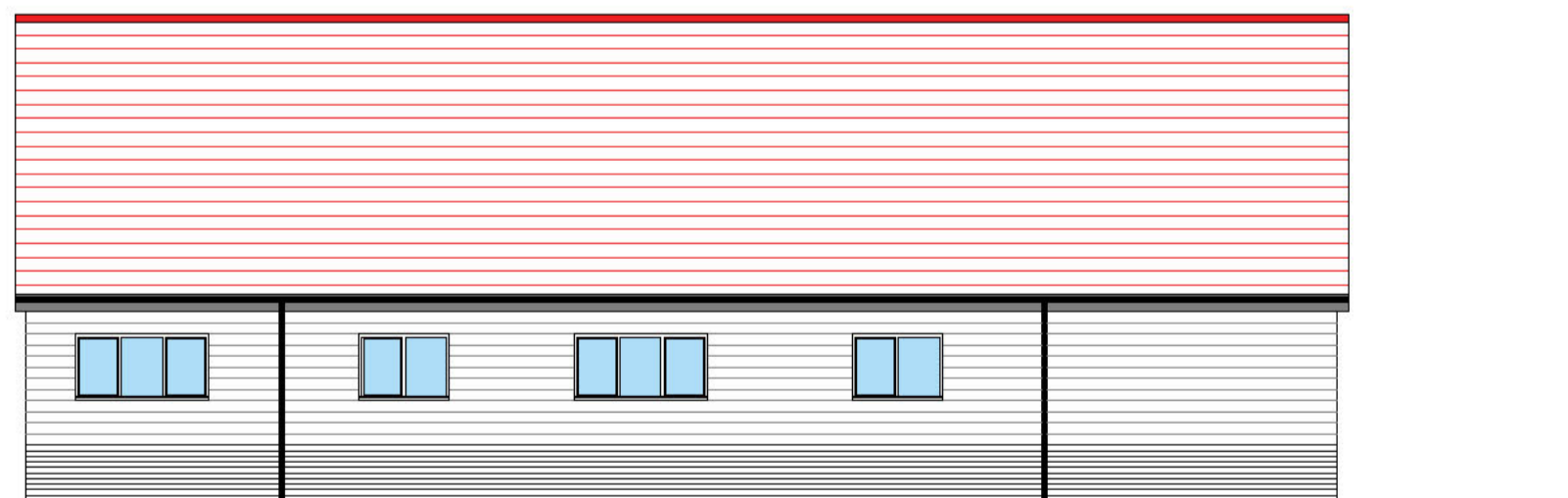
Elevation A



Elevation B



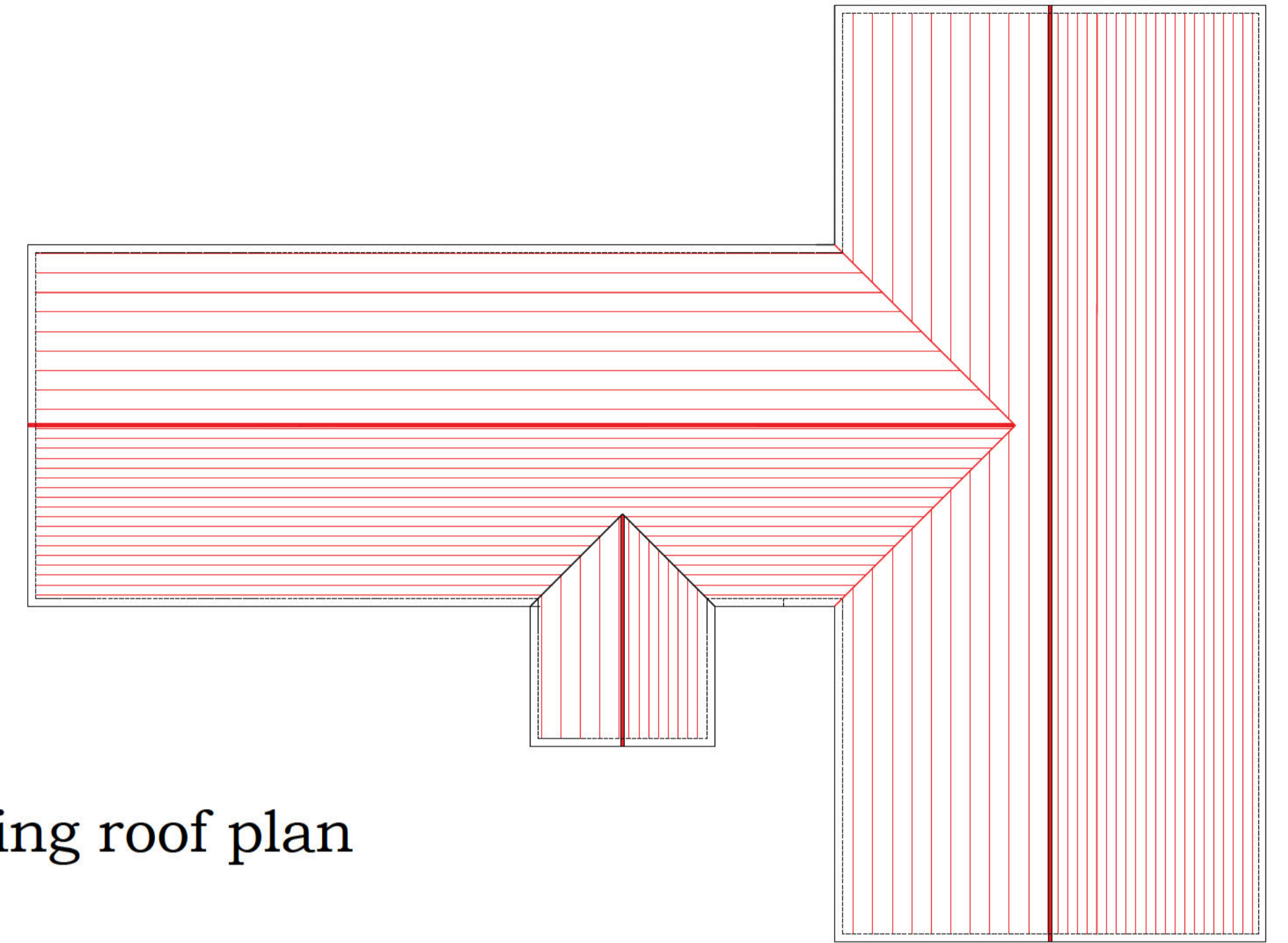
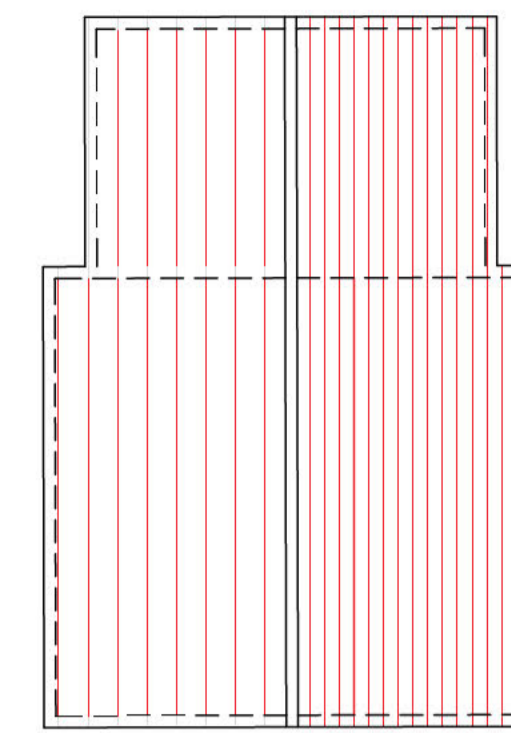
Elevation C



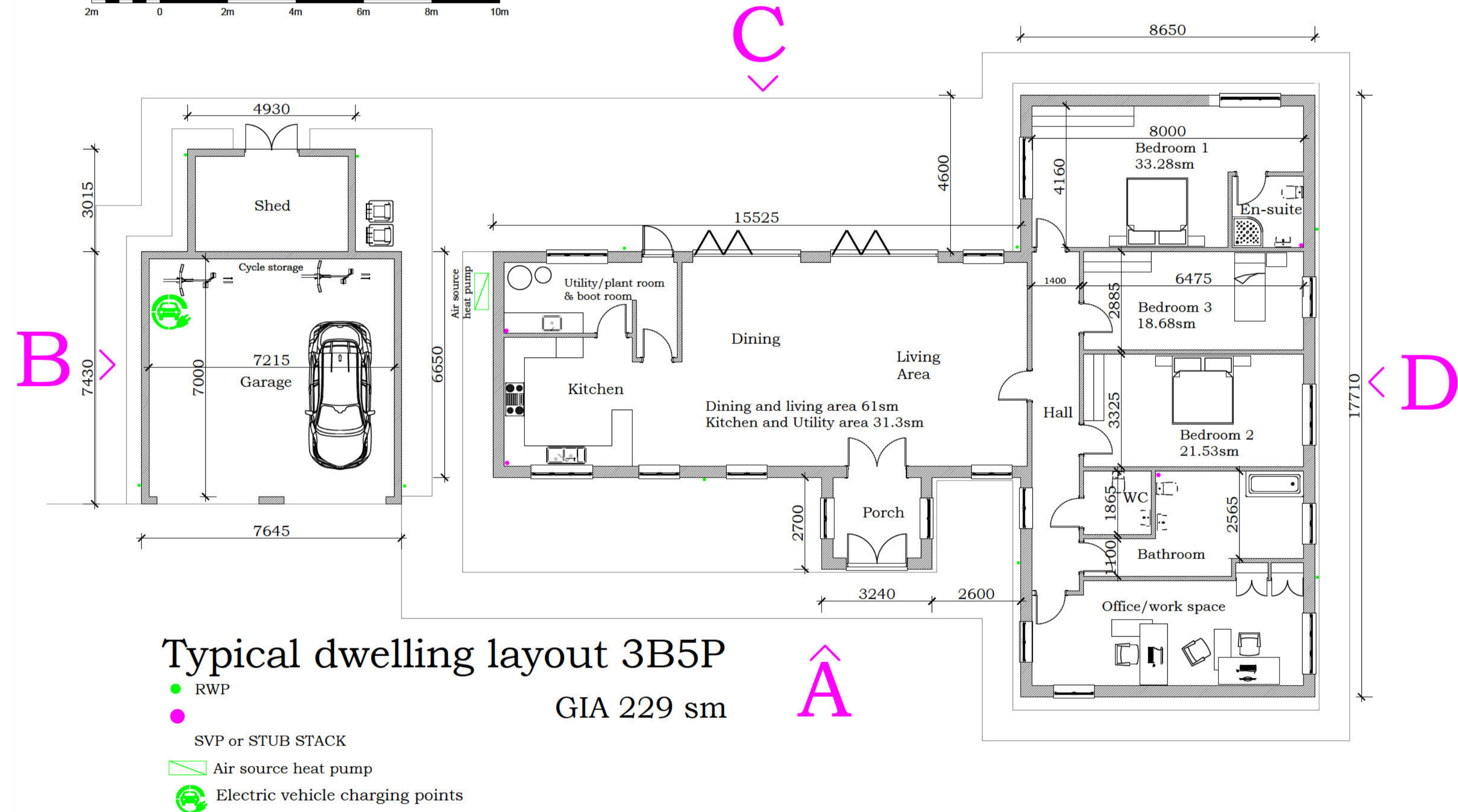
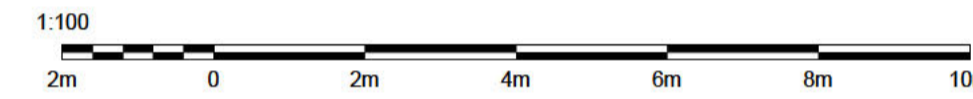
Elevation D

External materials

- Concrete tiles to roof with Upvc gutters, downpipes, fascias, bargeboards and soffites
- Upvc windows, timber doors
- Stained timber weatherboarding above facing brick plinth
- Timber doors to outbuilding



Typical dwelling roof plan



Rev A 24 Aug 2023 Dimensions and floor areas added.
Cycle storage noted.

Residential development of 5 dwellings
Eastfield Stables, Elsenham Road, Stansted CM24 8SS
Drawing RMDs/ES/23/003 A
Typical dwelling details
Scale 1: 100 @ A1

RANGER MANAGEMENT & DESIGN SERVICES
13 Berners End, Barnston, Dunmow CM6 1LY
t: 01371 874073 m: 07913 289362 e: planrmds@gmail.com