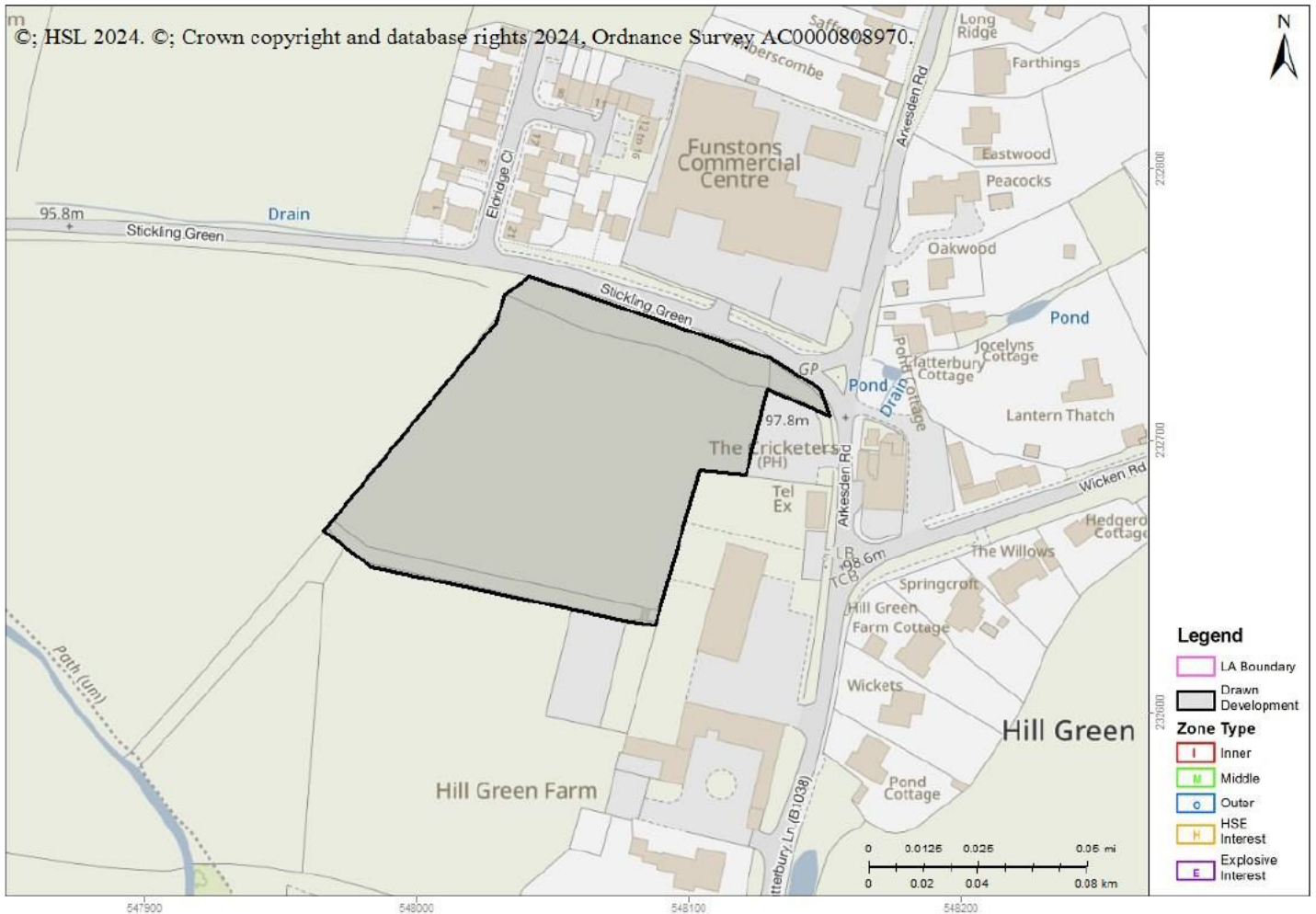


Advice : HSL-240110162546-1805 Does Not Cross Any Consultation Zones

Your Ref: S62A/2023/0030

Development Name: Land to the west of Clatterbury Lane, Clavering, Essex

Comments: Outline application with all matters reserved except access for up to 28 dwellings (class C3) including public open space, sustainable drainage systems, landscaping and associated infrastructure.



The proposed development site which you have identified does not currently lie within the consultation distance (CD) of a major hazard site or major accident hazard pipeline; therefore at present HSE does not need to be consulted on any developments on this site. However, should there be a delay submitting a planning application for the proposed development on this site, you may wish to approach HSE again to ensure that there have been no changes to CDs in this area in the intervening period.

This advice report has been generated using information supplied by [REDACTED] at The Planning Inspectorate on 10 January 2024.