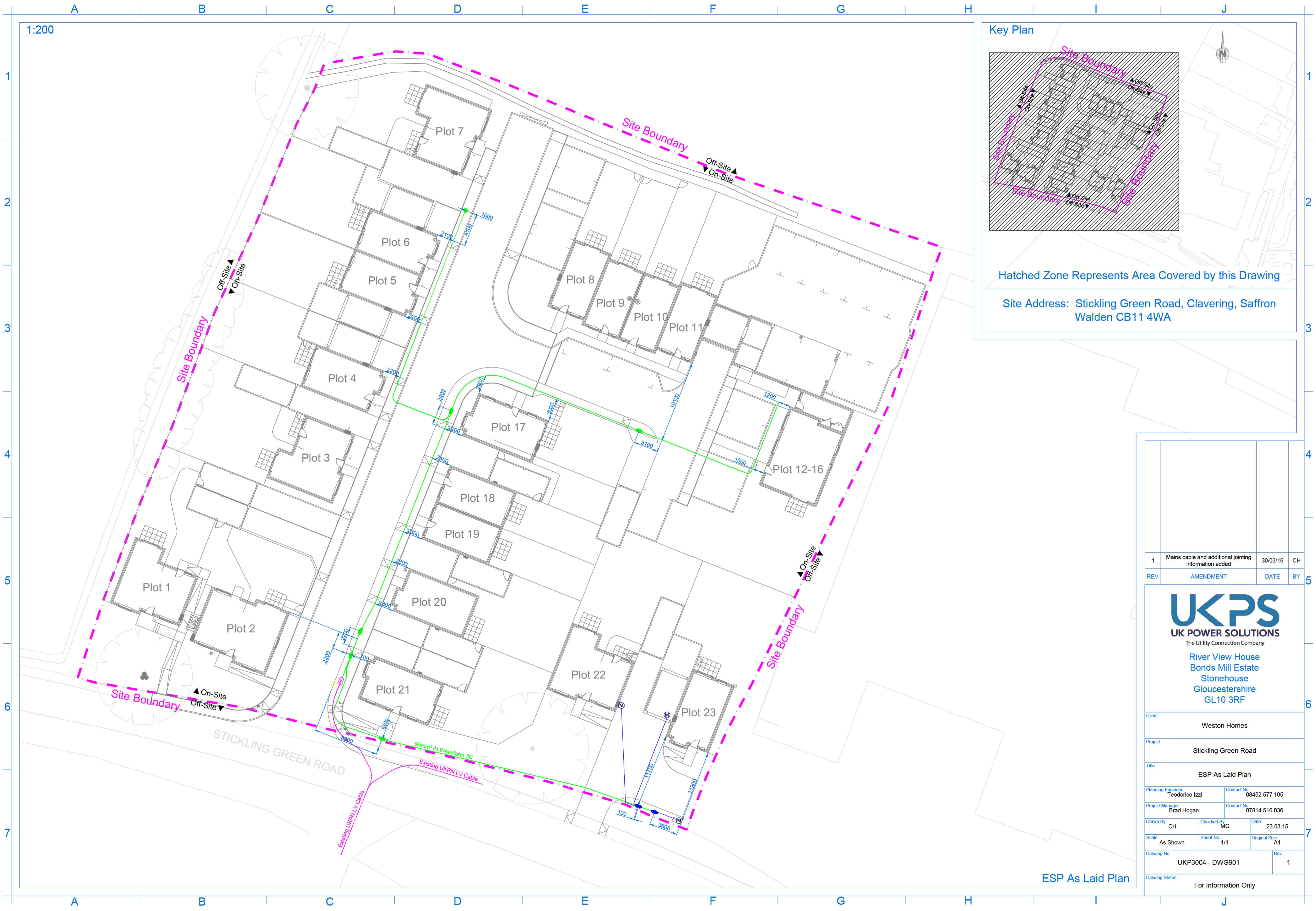
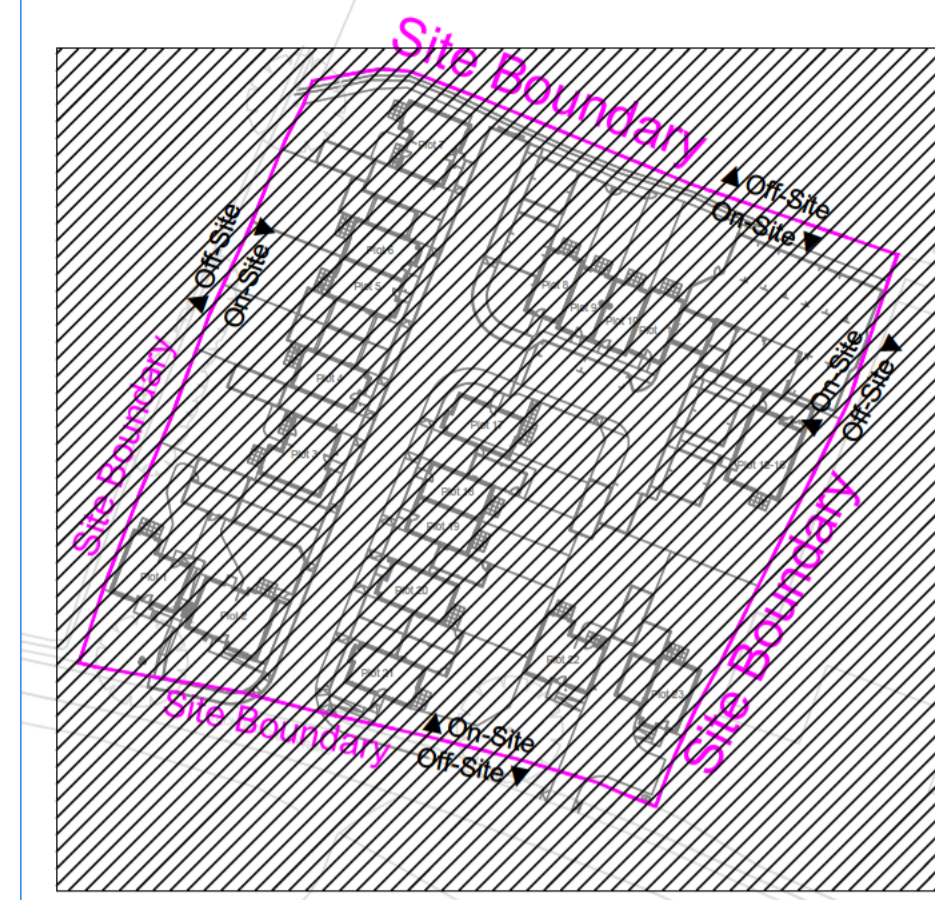


1:200



Key Plan



Hatched Zone Represents Area Covered by this Drawing

Site Address: Stickling Green Road, Clavering, Saffron Walden CB11 4WA

1	Mains cable and additional jointing information added	30/03/16	CH
REV	AMENDMENT	DATE	BY
 The Utility Connection Company River View House Bonds Mill Estate Stonehouse Gloucestershire GL10 3RF			
Client	Weston Homes		
Project	Stickling Green Road		
Title	ESP As Laid Plan		
Planning Engineer	Teodorico Izzi	Contact No	08452 577 105
Project Manager	Brad Hogan	Contact No	07814 516 036
Drawn By	CH	Checked By	MG
Date	23.03.15		
Scale	As Shown	Sheet No	1/1
Original Size	A1		
Drawing No.	UKP3004 - DWG901		Rev
			1
Drawing Status	For Information Only		

ESP As Laid Plan