

Dig Sites Area: Line:

The quality and accuracy of any print will depend on your printer, your computer and its print settings. Measurements scaled from this plan may not match measurements between the same points on the ground.



This plan must be used with the attached 'Symbols' document.

Date Requested: 02/01/2024
 Job Reference: 31975252
 Site Location: 555007 237233
 Requested by:

Your Scheme/Reference:
 S62A/2023/0031
 Scale: 1:2563 (When plotted at A4)

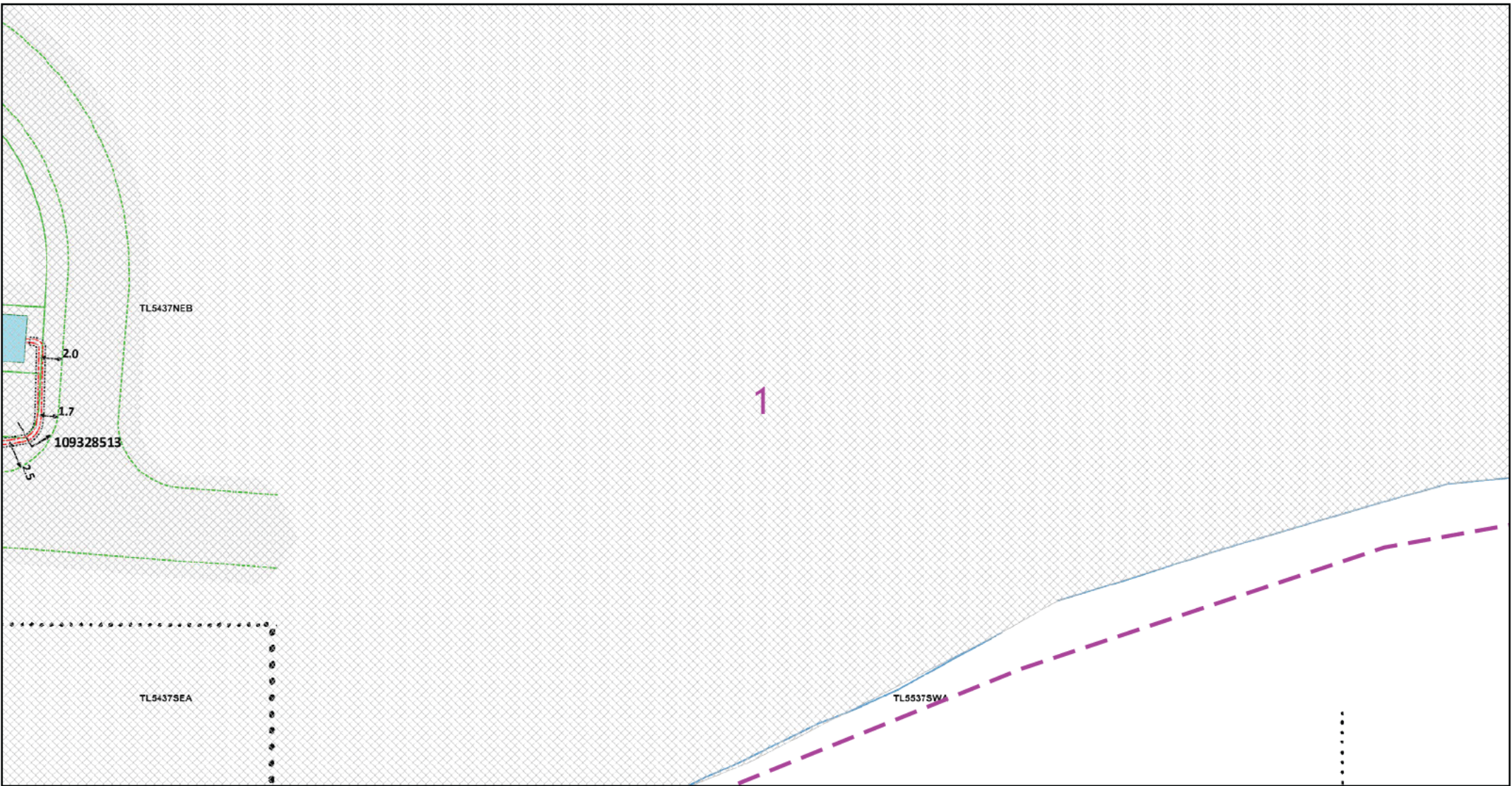
1. The position of the apparatus shown on this drawing is believed to be correct but the original landmarks may have been altered since the apparatus was installed.
 2. The exact position of the apparatus should be verified - use approved cable avoidance tools prior to excavation using suitable hand tools.
 3. It is essential that trial holes are carefully made avoiding the use of mechanical tools or picks until the exact location of all the cables have been determined.
 4. It must be assumed that there is a service cable into each property, lamp column and street sign, etc.
 5. All cables must be treated as being live unless proved otherwise by UK Power Networks.
 6. The information proved must be given to all people working near UK Power Networks plant and equipment. Do not use plans more than 3 months after the issue date for excavation purposes.
 7. Please be aware that electric cables/lines belonging to other owners of licensed electricity distribution systems may be present and it is your responsibility to identify their location.
 8. Please be aware the Low Voltage Overhead power lines are not currently displayed for the Eastern Region via this service, if you require records on the location of these please contact our Plan Provision team directly via plans@ukpowernetworks.co.uk.
1. UK Power Networks does not warrant that the information provided to you is correct. You rely upon it at your own risk.
 2. UK Power Networks does not exclude or limit its liability if it causes the death of any persons or causes personal injury to a person.
 3. Subject to paragraph 2 UK Power Networks has no liability to you in contract, in tort (including negligence), for breach of statutory duty or otherwise for any loss, damage, cost, claims, demands, or expenses that you or any third party may suffer or incur as a result of using the information provided whether for physical damage to property or for any economic loss (including without limitation loss of profit, loss of opportunity, loss of savings, loss of goodwill, loss of business, loss of use) or any special or consequential loss or damage whatsoever.
 4. This plan has been provided to you on the basis of the terms of use set out in the covering letter that accompanies this plan. If you do not accept and/or do not understand the terms of use set out in the covering letter you must not use the plan and must return it to the sender of the letter.
 5. You are responsible for the security of the information provided to you. It must not be given, sold or made available upon payment of a fee to a third party.
 6. Please Note: The Overview map does not display UK Power Networks electricity network and should not be used for the location of UK Power Networks assets. For detail of the electricity network please view the relevant page as highlighted in the Overview map.

IF IN DOUBT - ASK! PHONE
 0800 056 5866
 EMERGENCY - If you damage a
 cable or line
 Phone 0800 783 8838 (24hrs)
 URGENTLY



ALWAYS LOOK UP
 BEFORE
 YOU START WORK
 Refer to HSE Guidance
 note G56

Maps produced at 1:2500 scale are Geo-Schematics which show LV mains cables and overhead lines (in some cases all voltages). Prior to carrying out excavations you must refer to the 1:500 records to determine the location of all known underground plant and equipment.



The quality and accuracy of any print will depend on your printer, your computer and its print settings. Measurements scaled from this plan may not match measurements between the same points on the ground.



This plan must be used with the attached 'Symbols' document.

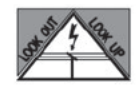
Date Requested: 02/01/2024
 Job Reference: 31975252
 Site Location: 555007 237233
 Requested by: Mrs [REDACTED]

Your Scheme/Reference:
 S62A/2023/0031
 Scale: 1:500 (When plotted at A4)

1. The position of the apparatus shown on this drawing is believed to be correct but the original landmarks may have been altered since the apparatus was installed.
2. The exact position of the apparatus should be verified - use approved cable avoidance tools prior to excavation using suitable hand tools.
3. It is essential that trial holes are carefully made avoiding the use of mechanical tools or picks until the exact location of all the cables have been determined.
4. It must be assumed that there is a service cable into each property, lamp column and street sign, etc.
5. All cables must be treated as being live unless proved otherwise by UK Power Networks.
6. The information proved must be given to all people working near UK Power Networks plant and equipment. Do not use plans more than 3 months after the issue date for excavation purposes.
7. Please be aware that electric cables/lines belonging to other owners of licensed electricity distribution systems may be present and it is your responsibility to identify their location.
8. Please be aware the Low Voltage Overhead power lines are not currently displayed for the Eastern Region via this service, if you require records on the location of these please contact our Plan Provision team directly via plans@ukpowernetworks.co.uk.

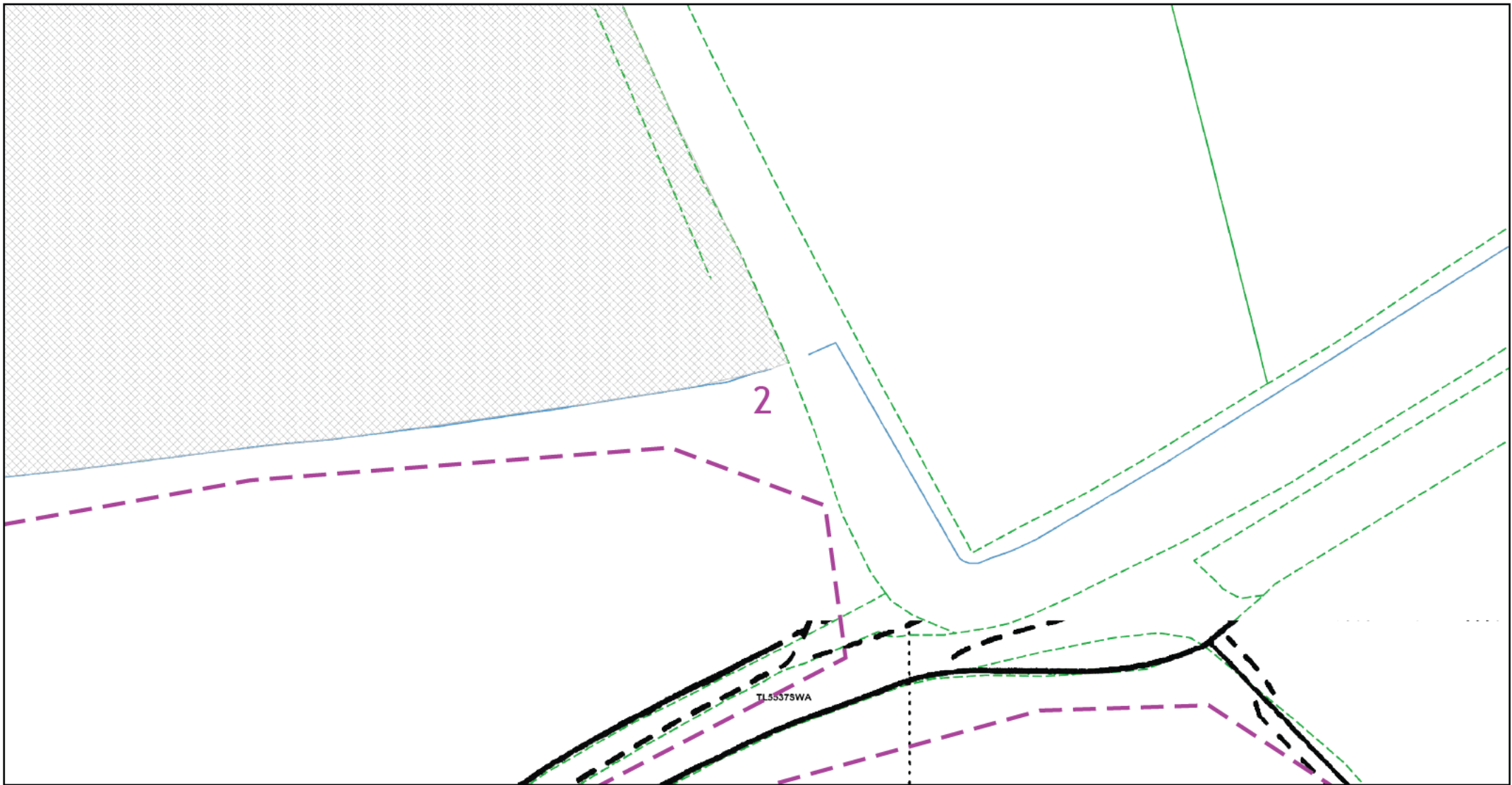
1. UK Power Networks does not warrant that the information provided to you is correct. You rely upon it at your own risk.
2. UK Power Networks does not exclude or limit its liability if it causes the death of any persons or causes personal injury to a person.
3. Subject to paragraph 2 UK Power Networks has no liability to you in contract, in tort (including negligence), for breach of statutory duty or otherwise for any loss, damage, cost, claims, demands, or expenses that you or any third party may suffer or incur as a result of using the information provided whether for physical damage to property or for any economic loss (including without limitation loss of profit, loss of opportunity, loss of savings, loss of goodwill, loss of business, loss of use) or any special or consequential loss or damage whatsoever.
4. This plan has been provided to you on the basis of the terms of use set out in the covering letter that accompanies this plan. If you do not accept and/or do not understand the terms of use set out in the covering letter you must not use the plan and must return it to the sender of the letter.
5. You are responsible for the security of the information provided to you. It must not be given, sold or made available upon payment of a fee to a third party.
6. Please Note: The Overview map does not display UK Power Networks electricity network and should not be used for the location of UK Power Networks assets. For detail of the electricity network please view the relevant page as highlighted in the Overview map.

IF IN DOUBT - ASK! PHONE
 0800 056 5866
 EMERGENCY - If you damage a
 cable or line
 Phone 0800 783 8838 (24hrs)
 URGENTLY



ALWAYS LOOK UP
 BEFORE
 YOU START WORK
 Refer to HSE Guidance
 note G56

Maps produced at 1:2500 scale are Geo-Schematics which show LV mains cables and overhead lines (in some cases all voltages). Prior to carrying out excavations you must refer to the 1:500 records to determine the location of all known underground plant and equipment.



Dig Sites Area: Line:

The quality and accuracy of any print will depend on your printer, your computer and its print settings. Measurements scaled from this plan may not match measurements between the same points on the ground.



This plan must be used with the attached 'Symbols' document.

Date Requested: 02/01/2024
 Job Reference: 31975252
 Site Location: 555007 237233
 Requested by: Mrs [REDACTED]

Your Schema/Reference:
 S62A/2023/0031
 Scale: 1:500 (When plotted at A4)

1. The position of the apparatus shown on this drawing is believed to be correct but the original landmarks may have been altered since the apparatus was installed.
2. The exact position of the apparatus should be verified - use approved cable avoidance tools prior to excavation using suitable hand tools.
3. It is essential that trial holes are carefully made avoiding the use of mechanical tools or picks until the exact location of all the cables have been determined.
4. It must be assumed that there is a service cable into each property, lamp column and street sign, etc.
5. All cables must be treated as being live unless proved otherwise by UK Power Networks.
6. The information proved must be given to all people working near UK Power Networks plant and equipment. Do not use plans more than 3 months after the issue date for excavation purposes.
7. Please be aware that electric cables/lines belonging to other owners of licensed electricity distribution systems may be present and it is your responsibility to identify their location.
8. Please be aware the Low Voltage Overhead power lines are not currently displayed for the Eastern Region via this service, if you require records on the location of these please contact our Plan Provision team directly via plans@ukpowernetworks.co.uk.

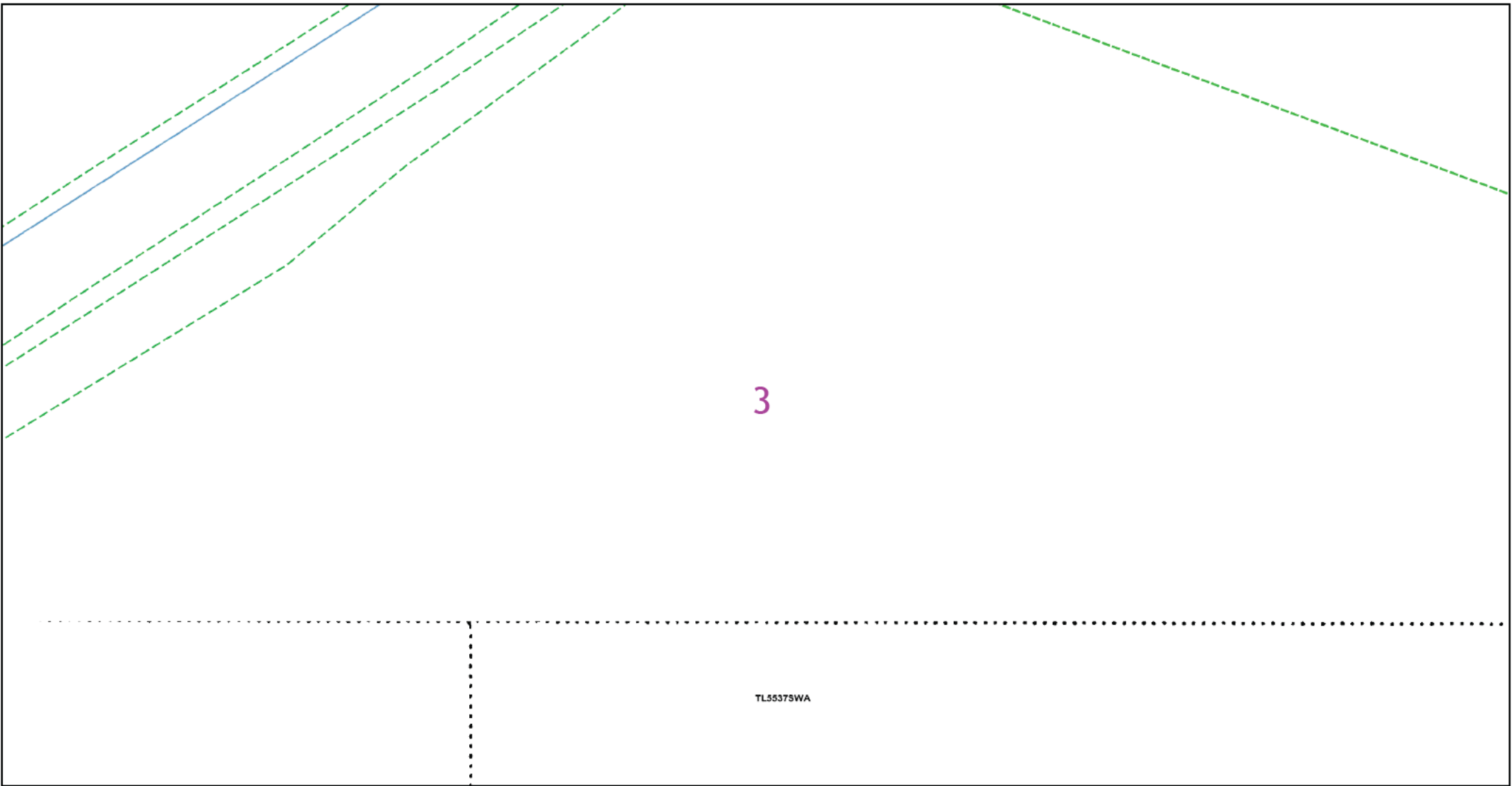
1. UK Power Networks does not warrant that the information provided to you is correct. You rely upon it at your own risk.
2. UK Power Networks does not exclude or limit its liability if it causes the death of any persons or causes personal injury to a person.
3. Subject to paragraph 2 UK Power Networks has no liability to you in contract, in tort (including negligence), for breach of statutory duty or otherwise for any loss, damage, cost, claims, demands, or expenses that you or any third party may suffer or incur as a result of using the information provided whether for physical damage to property or for any economic loss (including without limitation loss of profit, loss of opportunity, loss of savings, loss of goodwill, loss of business, loss of use) or any special or consequential loss or damage whatsoever.
4. This plan has been provided to you on the basis of the terms of use set out in the covering letter that accompanies this plan. If you do not accept and/or do not understand the terms of use set out in the covering letter you must not use the plan and must return it to the sender of the letter.
5. You are responsible for the security of the information provided to you. It must not be given, sold or made available upon payment of a fee to a third party.
6. Please Note: The Overview map does not display UK Power Networks electricity network and should not be used for the location of UK Power Networks assets. For detail of the electricity network please view the relevant page as highlighted in the Overview map.

IF IN DOUBT - ASK! PHONE
 0800 056 5866
 EMERGENCY - If you damage a
 cable or line
 Phone 0800 783 8838 (24hrs)
 URGENTLY



ALWAYS LOOK UP
 BEFORE
 YOU START WORK
 Refer to HSE Guidance
 note G56

Maps produced at 1:2500 scale are Geo-Schematics which show LV mains cables and overhead lines (in some cases all voltages). Prior to carrying out excavations you must refer to the 1:500 records to determine the location of all known underground plant and equipment.



3

TL5537SWA



Dig Sites Area: Line:

The quality and accuracy of any print will depend on your printer, your computer and its print settings. Measurements scaled from this plan may not match measurements between the same points on the ground.



This plan must be used with the attached 'Symbols' document.
 Date Requested: 02/01/2024
 Job Reference: 31975252
 Site Location: 555007 237233
 Requested by: Mrs [REDACTED]
 Your Schema/Reference: 562A/2023/0031
 Scale: 1:500 (When plotted at A4)

1. The position of the apparatus shown on this drawing is believed to be correct but the original landmarks may have been altered since the apparatus was installed.
2. The exact position of the apparatus should be verified - use approved cable avoidance tools prior to excavation using suitable hand tools.
3. It is essential that trial holes are carefully made avoiding the use of mechanical tools or picks until the exact location of all the cables have been determined.
4. It must be assumed that there is a service cable into each property, lamp column and street sign, etc.
5. All cables must be treated as being live unless proved otherwise by UK Power Networks.
6. The information provided must be given to all people working near UK Power Networks plant and equipment. Do not use plans more than 3 months after the issue date for excavation purposes.
7. Please be aware that electric cables/lines belonging to other owners of licensed electricity distribution systems may be present and it is your responsibility to identify their location.
8. Please be aware the Low Voltage Overhead power lines are not currently displayed for the Eastern Region via this service, if you require records on the location of these please contact our Plan Provision team directly via plans@ukpowernetworks.co.uk.

1. UK Power Networks does not warrant that the information provided to you is correct. You rely upon it at your own risk.
2. UK Power Networks does not exclude or limit its liability if it causes the death of any persons or causes personal injury to a person.
3. Subject to paragraph 2 UK Power Networks has no liability to you in contract, in tort (including negligence), for breach of statutory duty or otherwise for any loss, damage, cost, claims, demands, or expenses that you or any third party may suffer or incur as a result of using the information provided whether for physical damage to property or for any economic loss (including without limitation loss of profit, loss of opportunity, loss of savings, loss of goodwill, loss of business, loss of use) or any special or consequential loss or damage whatsoever.
4. This plan has been provided to you on the basis of the terms of use set out in the covering letter that accompanies this plan. If you do not accept and/or do not understand the terms of use set out in the covering letter you must not use the plan and must return it to the sender of the letter.
5. You are responsible for the security of the information provided to you. It must not be given, sold or made available upon payment of a fee to a third party.
6. Please Note: The Overview map does not display UK Power Networks electricity network and should not be used for the location of UK Power Networks assets. For detail of the electricity network please view the relevant page as highlighted in the Overview map.

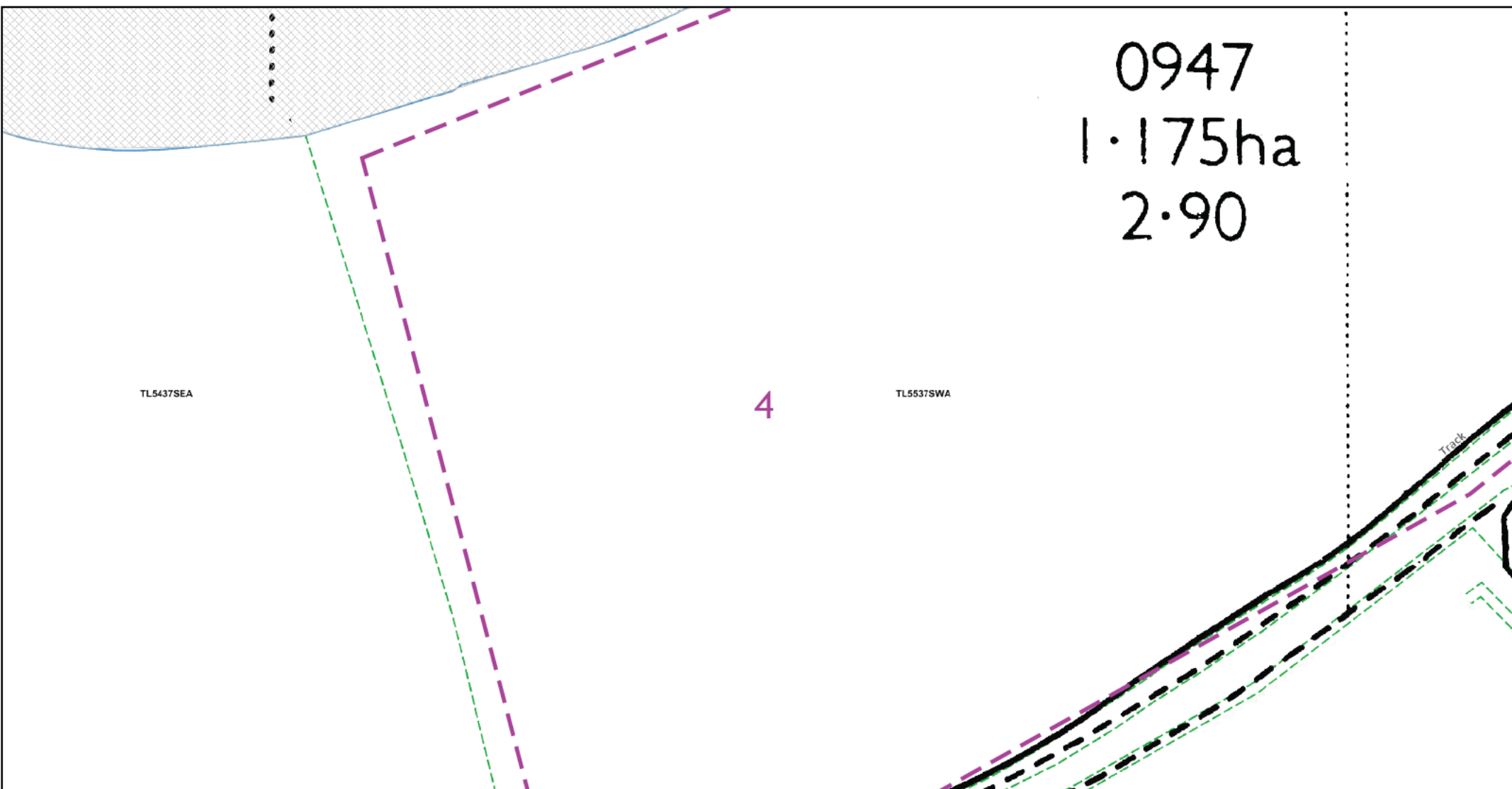
IF IN DOUBT - ASK! PHONE 0800 056 5866
 EMERGENCY - If you damage a cable or line Phone 0800 783 8838 (24hrs) URGENTLY



ALWAYS LOOK UP BEFORE YOU START WORK Refer to HSE Guidance note G56

Maps produced at 1:2500 scale are Geo-Schematics which show LV mains cables and overhead lines (in some cases all voltages). Prior to carrying out excavations you must refer to the 1:500 records to determine the location of all known underground plant and equipment.

0947
1.175ha
2.90



TL5437SEA

4

TL5537SWA

Track



Dig Sites Area: Line:

The quality and accuracy of any print will depend on your printer, your computer and its print settings. Measurements scaled from this plan may not match measurements between the same points on the ground.



This plan must be used with the attached 'Symbols' document.

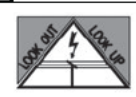
Date Requested: 02/01/2024
Job Reference: 31975252
Site Location: 555007 237233
Requested by: Mrs

Your Schema/Reference:
S62A/2023/0031
Scale: 1:500 (When plotted at A4)

1. The position of the apparatus shown on this drawing is believed to be correct but the original landmarks may have been altered since the apparatus was installed.
2. The exact position of the apparatus should be verified - use approved cable avoidance tools prior to excavation using suitable hand tools.
3. It is essential that trial holes are carefully made avoiding the use of mechanical tools or picks until the exact location of all the cables have been determined.
4. It must be assumed that there is a service cable into each property, lamp column and street sign, etc.
5. All cables must be treated as being live unless proved otherwise by UK Power Networks.
6. The information proved must be given to all people working near UK Power Networks plant and equipment. Do not use plans more than 3 months after the issue date for excavation purposes.
7. Please be aware that electric cables/lines belonging to other owners of licensed electricity distribution systems may be present and it is your responsibility to identify their location.
8. Please be aware the Low Voltage Overhead power lines are not currently displayed for the Eastern Region via this service, if you require records on the location of these please contact our Plan Provision team directly via plans@ukpowernetworks.co.uk.

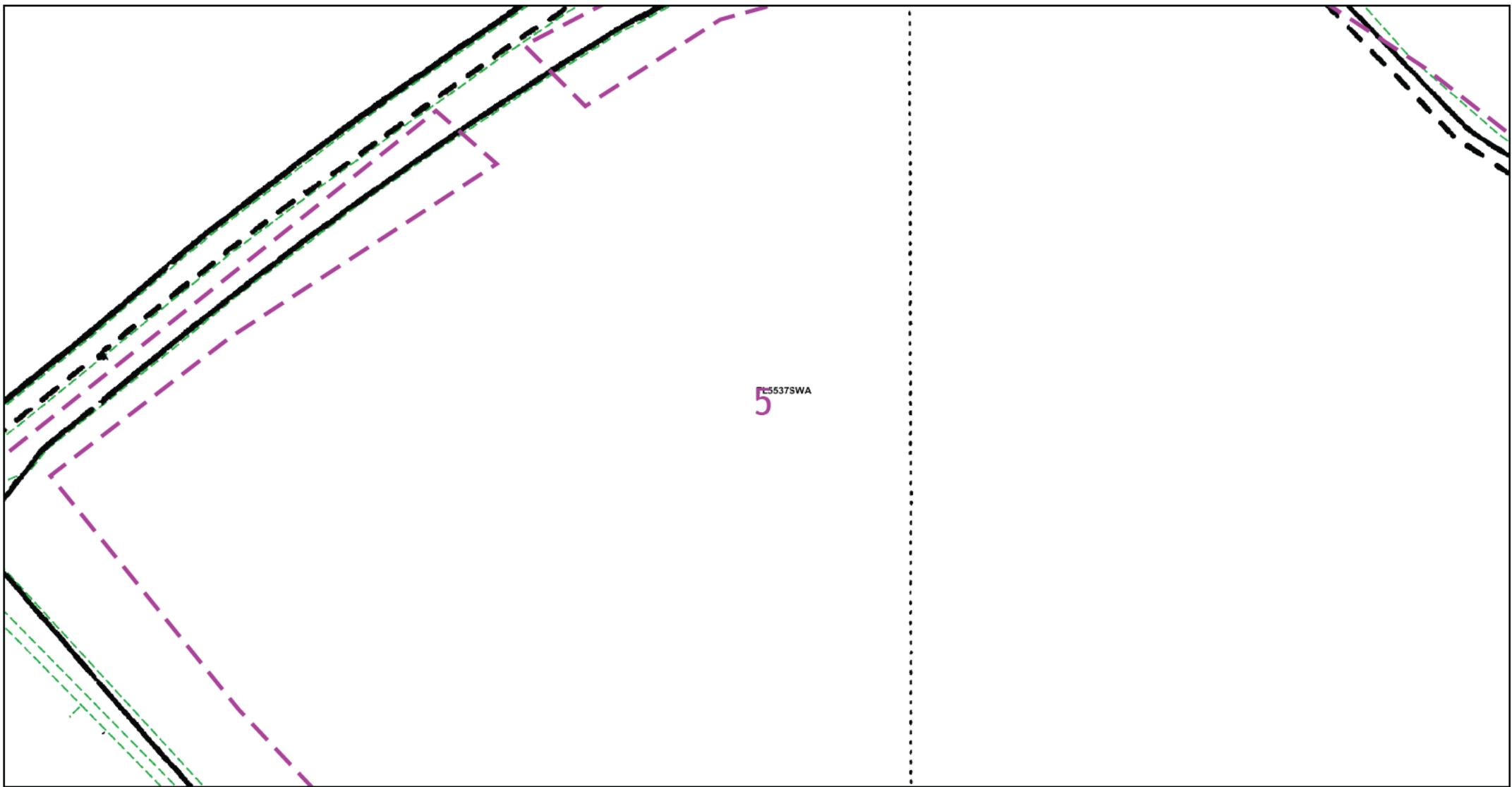
1. UK Power Networks does not warrant that the information provided to you is correct. You rely upon it at your own risk.
2. UK Power Networks does not exclude or limit its liability if it causes the death of any persons or causes personal injury to a person.
3. Subject to paragraph 2 UK Power Networks has no liability to you in contract, in tort (including negligence), for breach of statutory duty or otherwise for any loss, damage, cost, claims, demands, or expenses that you or any third party may suffer or incur as a result of using the information provided whether for physical damage to property or for any economic loss (including without limitation loss of profit, loss of opportunity, loss of savings, loss of goodwill, loss of business, loss of use) or any special or consequential loss or damage whatsoever.
4. This plan has been provided to you on the basis of the terms of use set out in the covering letter that accompanies this plan. If you do not accept and/or do not understand the terms of use set out in the covering letter you must not use the plan and must return it to the sender of the letter.
5. You are responsible for the security of the information provided to you. It must not be given, sold or made available upon payment of a fee to a third party.
6. Please Note: The Overview map does not display UK Power Networks electricity network and should not be used for the location of UK Power Networks assets. For detail of the electricity network please view the relevant page as highlighted in the Overview map.

IF IN DOUBT - ASK! PHONE
0800 056 5866
EMERGENCY - If you damage a
cable or line
Phone 0800 783 8838 (24hrs)
URGENTLY



ALWAYS LOOK UP
BEFORE
YOU START WORK
Refer to HSE Guidance
note G56

Maps produced at 1:2500 scale are Geo-Schematics which show LV mains cables and overhead lines (in some cases all voltages). Prior to carrying out excavations you must refer to the 1:500 records to determine the location of all known underground plant and equipment.



5



Dig Sites Area: Line:

The quality and accuracy of any print will depend on your printer, your computer and its print settings. Measurements scaled from this plan may not match measurements between the same points on the ground.



This plan must be used with the attached 'Symbols' document.

Date Requested: 02/01/2024
 Job Reference: 31975252
 Site Location: 555007 237233
 Requested by: Mrs [REDACTED]

Your Schema/Reference:
 S62A/2023/0031
 Scale: 1:500 (When plotted at A4)

1. The position of the apparatus shown on this drawing is believed to be correct but the original landmarks may have been altered since the apparatus was installed.
2. The exact position of the apparatus should be verified - use approved cable avoidance tools prior to excavation using suitable hand tools.
3. It is essential that trial holes are carefully made avoiding the use of mechanical tools or picks until the exact location of all the cables have been determined.
4. It must be assumed that there is a service cable into each property, lamp column and street sign, etc.
5. All cables must be treated as being live unless proved otherwise by UK Power Networks.
6. The information proved must be given to all people working near UK Power Networks plant and equipment. Do not use plans more than 3 months after the issue date for excavation purposes.
7. Please be aware that electric cables/lines belonging to other owners of licensed electricity distribution systems may be present and it is your responsibility to identify their location.
8. Please be aware the Low Voltage Overhead power lines are not currently displayed for the Eastern Region via this service, if you require records on the location of these please contact our Plan Provision team directly via plans@ukpowernetworks.co.uk.

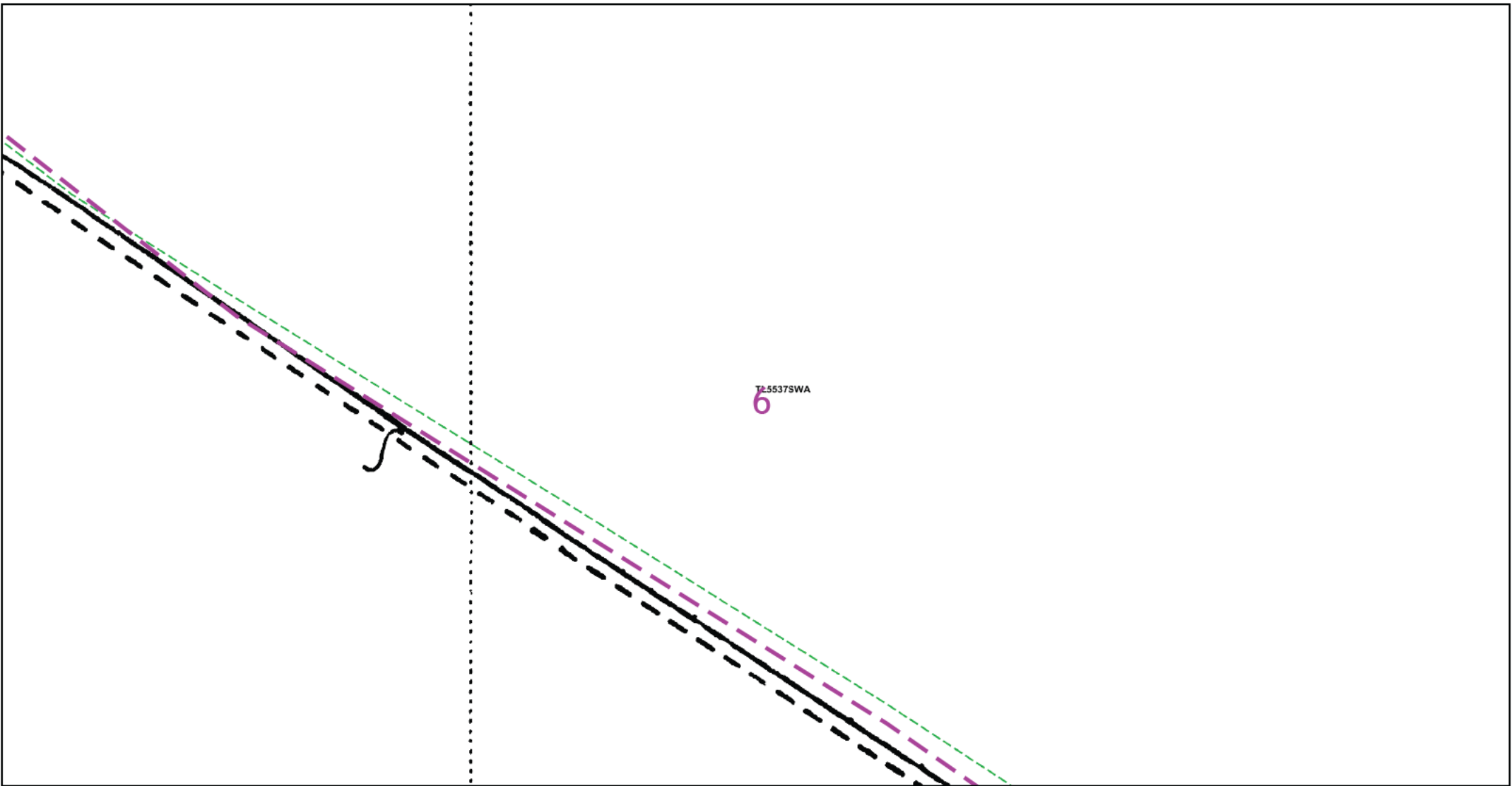
1. UK Power Networks does not warrant that the information provided to you is correct. You rely upon it at your own risk.
2. UK Power Networks does not exclude or limit its liability if it causes the death of any persons or causes personal injury to a person.
3. Subject to paragraph 2 UK Power Networks has no liability to you in contract, in tort (including negligence), for breach of statutory duty or otherwise for any loss, damage, cost, claims, demands, or expenses that you or any third party may suffer or incur as a result of using the information provided whether for physical damage to property or for any economic loss (including without limitation loss of profit, loss of opportunity, loss of savings, loss of goodwill, loss of business, loss of use) or any special or consequential loss or damage whatsoever.
4. This plan has been provided to you on the basis of the terms of use set out in the covering letter that accompanies this plan. If you do not accept and/or do not understand the terms of use set out in the covering letter you must not use the plan and must return it to the sender of the letter.
5. You are responsible for the security of the information provided to you. It must not be given, sold or made available upon payment of a fee to a third party.
6. Please Note: The Overview map does not display UK Power Networks electricity network and should not be used for the location of UK Power Networks assets. For detail of the electricity network please view the relevant page as highlighted in the Overview map.

IF IN DOUBT - ASK! PHONE
 0800 056 5866
 EMERGENCY - If you damage a cable or line
 Phone 0800 783 8838 (24hrs)
 URGENTLY



ALWAYS LOOK UP BEFORE YOU START WORK
 Refer to HSE Guidance note G56

Maps produced at 1:2500 scale are Geo-Schematics which show LV mains cables and overhead lines (in some cases all voltages). Prior to carrying out excavations you must refer to the 1:500 records to determine the location of all known underground plant and equipment.



T-5537SWA
6



Dig Sites Area: Line:

The quality and accuracy of any print will depend on your printer, your computer and its print settings. Measurements scaled from this plan may not match measurements between the same points on the ground.



This plan must be used with the attached 'Symbols' document.

Date Requested: 02/01/2024
Job Reference: 31975252
Site Location: 555007 237233
Requested by:

Your Schema/Reference:
S62A/2023/0031
Scale: 1:500 (When plotted at A4)

1. The position of the apparatus shown on this drawing is believed to be correct but the original landmarks may have been altered since the apparatus was installed.
2. The exact position of the apparatus should be verified - use approved cable avoidance tools prior to excavation using suitable hand tools.
3. It is essential that trial holes are carefully made avoiding the use of mechanical tools or picks until the exact location of all the cables have been determined.
4. It must be assumed that there is a service cable into each property, lamp column and street sign, etc.
5. All cables must be treated as being live unless proved otherwise by UK Power Networks.
6. The information proved must be given to all people working near UK Power Networks plant and equipment. Do not use plans more than 3 months after the issue date for excavation purposes.
7. Please be aware that electric cables/lines belonging to other owners of licensed electricity distribution systems may be present and it is your responsibility to identify their location.
8. Please be aware the Low Voltage Overhead power lines are not currently displayed for the Eastern Region via this service, if you require records on the location of these please contact our Plan Provision team directly via plans@ukpowernetworks.co.uk.

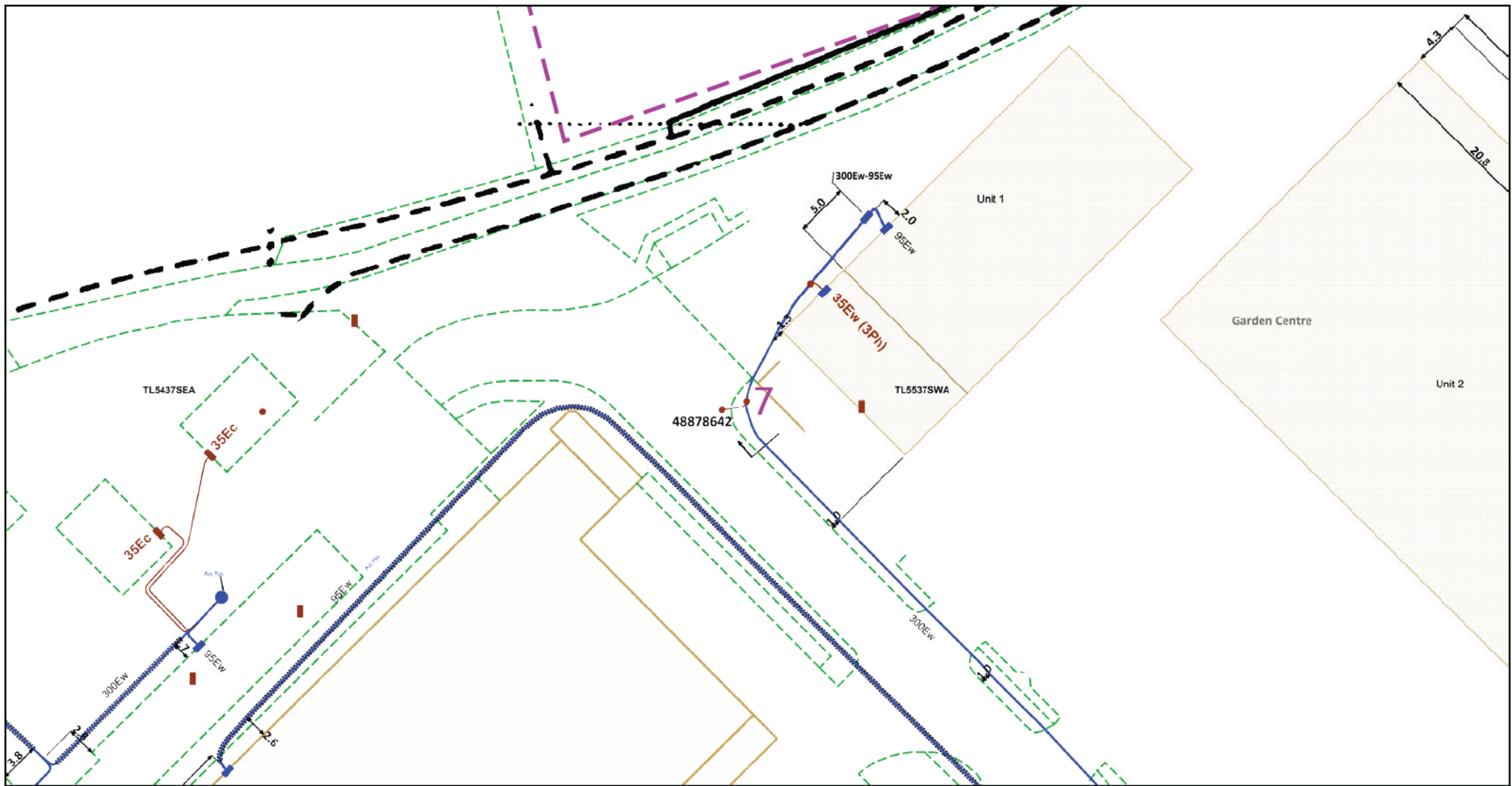
1. UK Power Networks does not warrant that the information provided to you is correct. You rely upon it at your own risk.
2. UK Power Networks does not exclude or limit its liability if it causes the death of any persons or causes personal injury to a person.
3. Subject to paragraph 2 UK Power Networks has no liability to you in contract, in tort (including negligence), for breach of statutory duty or otherwise for any loss, damage, cost, claims, demands, or expenses that you or any third party may suffer or incur as a result of using the information provided whether for physical damage to property or for any economic loss (including without limitation loss of profit, loss of opportunity, loss of savings, loss of goodwill, loss of business, loss of use) or any special or consequential loss or damage whatsoever.
4. This plan has been provided to you on the basis of the terms of use set out in the covering letter that accompanies this plan. If you do not accept and/or do not understand the terms of use set out in the covering letter you must not use the plan and must return it to the sender of the letter.
5. You are responsible for the security of the information provided to you. It must not be given, sold or made available upon payment of a fee to a third party.
6. Please Note: The Overview map does not display UK Power Networks electricity network and should not be used for the location of UK Power Networks assets. For detail of the electricity network please view the relevant page as highlighted in the Overview map.

IF IN DOUBT - ASK! PHONE
0800 056 5866
EMERGENCY - If you damage a
cable or line
Phone 0800 783 8838 (24hrs)
URGENTLY



ALWAYS LOOK UP
BEFORE
YOU START WORK
Refer to HSE Guidance
note G56

Maps produced at 1:2500 scale are Geo-Schematics which show LV mains cables and overhead lines (in some cases all voltages). Prior to carrying out excavations you must refer to the 1:500 records to determine the location of all known underground plant and equipment.



The quality and accuracy of any print will depend on your printer, your computer and its print settings. Measurements scaled from this plan may not match measurements between the same points on the ground.



This plan must be used with the attached 'Symbols' document.

Date Requested: 02/01/2024
 Job Reference: 31975252
 Site Location: 555007 237233
 Requested by: [REDACTED]

Your Schema/Reference:
 562A/2023/0031
 Scale: 1:500 (When plotted at A4)

1. The position of the apparatus shown on this drawing is believed to be correct but the original landmarks may have been altered since the apparatus was installed.
2. The exact position of the apparatus should be verified - use approved cable avoidance tools prior to excavation using suitable hand tools.
3. It is essential that trial holes are carefully made avoiding the use of mechanical tools or picks until the exact location of all the cables have been determined.
4. It must be assumed that there is a service cable into each property, lamp column and street sign, etc.
5. All cables must be treated as being live unless proved otherwise by UK Power Networks.
6. The information proved must be given to all people working near UK Power Networks plant and equipment. Do not use plans more than 3 months after the issue date for excavation purposes.
7. Please be aware that electric cables/lines belonging to other owners of licensed electricity distribution systems may be present and it is your responsibility to identify their location.
8. Please be aware the Low Voltage Overhead power lines are not currently displayed for the Eastern Region via this service, if you require records on the location of these please contact our Plan Provision team directly via plans@ukpowernetworks.co.uk.

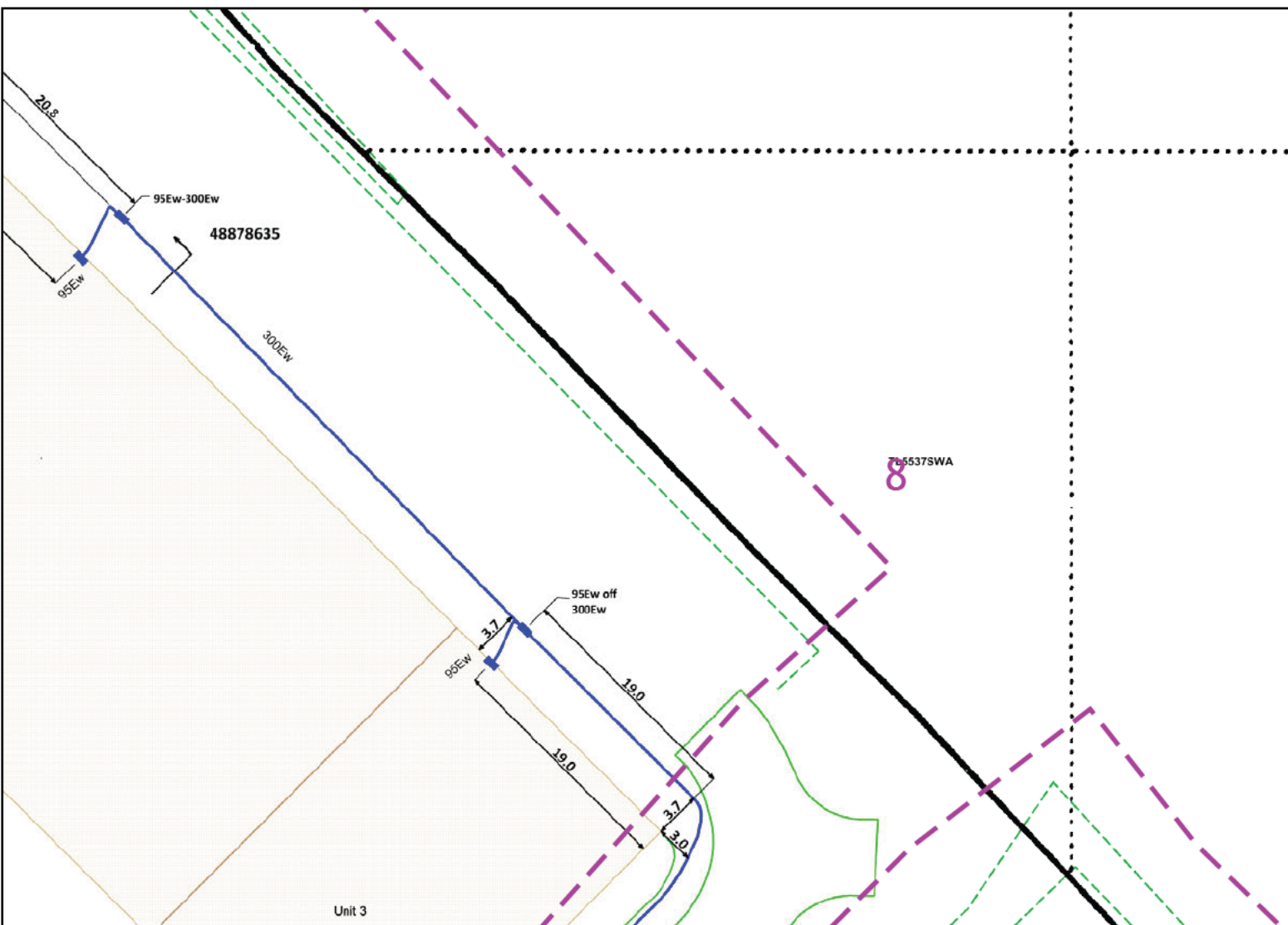
1. UK Power Networks does not warrant that the information provided to you is correct. You rely upon it at your own risk.
2. UK Power Networks does not exclude or limit its liability if it causes the death of any persons or causes personal injury to a person.
3. Subject to paragraph 2 UK Power Networks has no liability to you in contract, in tort (including negligence), for breach of statutory duty or otherwise for any loss, damage, cost, claims, demands, or expenses that you or any third party may suffer or incur as a result of using the information provided whether for physical damage to property or for any economic loss (including without limitation loss of profit, loss of opportunity, loss of savings, loss of goodwill, loss of business, loss of use) or any special or consequential loss or damage whatsoever.
4. This plan has been provided to you on the basis of the terms of use set out in the covering letter that accompanies this plan. If you do not accept and/or do not understand the terms of use set out in the covering letter you must not use the plan and must return it to the sender of the letter.
5. You are responsible for the security of the information provided to you. It must not be given, sold or made available upon payment of a fee to a third party.
6. Please Note: The Overview map does not display UK Power Networks electricity network and should not be used for the location of UK Power Networks assets. For detail of the electricity network please view the relevant page as highlighted in the Overview map.

IF IN DOUBT - ASK! PHONE
 0800 056 5866
 EMERGENCY - If you damage a
 cable or line
 Phone 0800 783 8838 (24hrs)
 URGENTLY



ALWAYS LOOK UP
 BEFORE
 YOU START WORK
 Refer to HSE Guidance
 note G56

Maps produced at 1:2500 scale are Geo-Schematics which show LV mains cables and overhead lines (in some cases all voltages). Prior to carrying out excavations you must refer to the 1:500 records to determine the location of all known underground plant and equipment.



2439
2.932ha
7.25

The quality and accuracy of any print will depend on your printer, your computer and its print settings. Measurements scaled from this plan may not match measurements between the same points on the ground.



Dig Sites Area: Line:



This plan must be used with the attached 'Symbols' document.

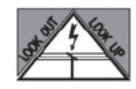
Date Requested: 02/01/2024
Job Reference: 31975252
Site Location: 555007 237233
Requested by:

Your Schema/Reference:
S62A/2023/0031
Scale: 1:500 (When plotted at A4)

1. The position of the apparatus shown on this drawing is believed to be correct but the original landmarks may have been altered since the apparatus was installed.
2. The exact position of the apparatus should be verified - use approved cable avoidance tools prior to excavation using suitable hand tools.
3. It is essential that trial holes are carefully made avoiding the use of mechanical tools or picks until the exact location of all the cables has been determined.
4. It must be assumed that there is a service cable into each property, lamp column and street sign, etc.
5. All cables must be treated as being live unless proved otherwise by UK Power Networks.
6. The information proved must be given to all people working near UK Power Networks plant and equipment. Do not use plans more than 3 months after the issue date for excavation purposes.
7. Please be aware that electric cables/lines belonging to other owners of licensed electricity distribution systems may be present and it is your responsibility to identify their location.
8. Please be aware the Low Voltage Overhead power lines are not currently displayed for the Eastern Region via this service, if you require records on the location of these please contact our Plan Provision team directly via plans@ukpowernetworks.co.uk.

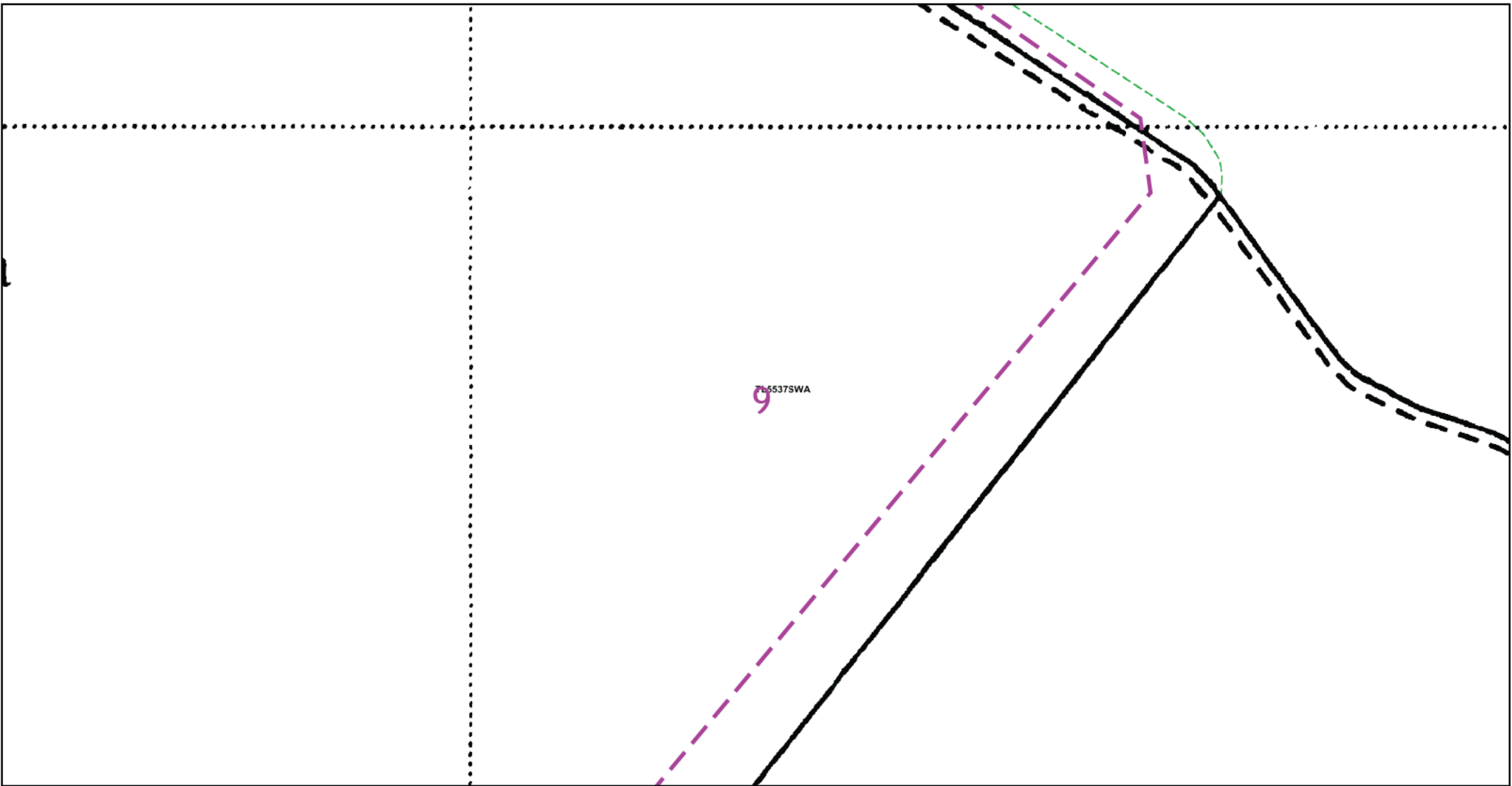
1. UK Power Networks does not warrant that the information provided to you is correct. You rely upon it at your own risk.
2. UK Power Networks does not exclude or limit its liability if it causes the death of any persons or causes personal injury to a person.
3. Subject to paragraph 2 UK Power Networks has no liability to you in contract, in tort (including negligence), for breach of statutory duty or otherwise for any loss, damage, cost, claims, demands, or expenses that you or any third party may suffer or incur as a result of using the information provided whether for physical damage to property or for any economic loss (including without limitation loss of profit, loss of opportunity, loss of savings, loss of goodwill, loss of business, loss of use) or any special or consequential loss or damage whatsoever.
4. This plan has been provided to you on the basis of the terms of use set out in the covering letter that accompanies this plan. If you do not accept and/or do not understand the terms of use set out in the covering letter you must not use the plan and must return it to the sender of the letter.
5. You are responsible for the security of the information provided to you. It must not be given, sold or made available upon payment of a fee to a third party.
6. Please Note: The Overview map does not display UK Power Networks electricity network and should not be used for the location of UK Power Networks assets. For detail of the electricity network please view the relevant page as highlighted in the Overview map.

IF IN DOUBT - ASK! PHONE
0800 056 5866
EMERGENCY - If you damage a
cable or line
Phone 0800 783 8838 (24hrs)
URGENTLY



ALWAYS LOOK UP
BEFORE
YOU START WORK
Refer to HSE Guidance
note G56

Maps produced at 1:2500 scale are Geo-Schematics which show LV mains cables and overhead lines (in some cases all voltages). Prior to carrying out excavations you must refer to the 1:500 records to determine the location of all known underground plant and equipment.



765537SWA
9



Dig Sites Area: Line:

The quality and accuracy of any print will depend on your printer, your computer and its print settings. Measurements scaled from this plan may not match measurements between the same points on the ground.



This plan must be used with the attached 'Symbols' document.

Date Requested: 02/01/2024
 Job Reference: 31975252
 Site Location: 555007 237233
 Requested by:

Your Schema/Reference:
 S62A/2023/0031
 Scale: 1:500 (When plotted at A4)

1. The position of the apparatus shown on this drawing is believed to be correct but the original landmarks may have been altered since the apparatus was installed.
2. The exact position of the apparatus should be verified - use approved cable avoidance tools prior to excavation using suitable hand tools.
3. It is essential that trial holes are carefully made avoiding the use of mechanical tools or picks until the exact location of all the cables have been determined.
4. It must be assumed that there is a service cable into each property, lamp column and street sign, etc.
5. All cables must be treated as being live unless proved otherwise by UK Power Networks.
6. The information proved must be given to all people working near UK Power Networks plant and equipment. Do not use plans more than 3 months after the issue date for excavation purposes.
7. Please be aware that electric cables/lines belonging to other owners of licensed electricity distribution systems may be present and it is your responsibility to identify their location.
8. Please be aware the Low Voltage Overhead power lines are not currently displayed for the Eastern Region via this service, if you require records on the location of these please contact our Plan Provision team directly via plans@ukpowernetworks.co.uk.

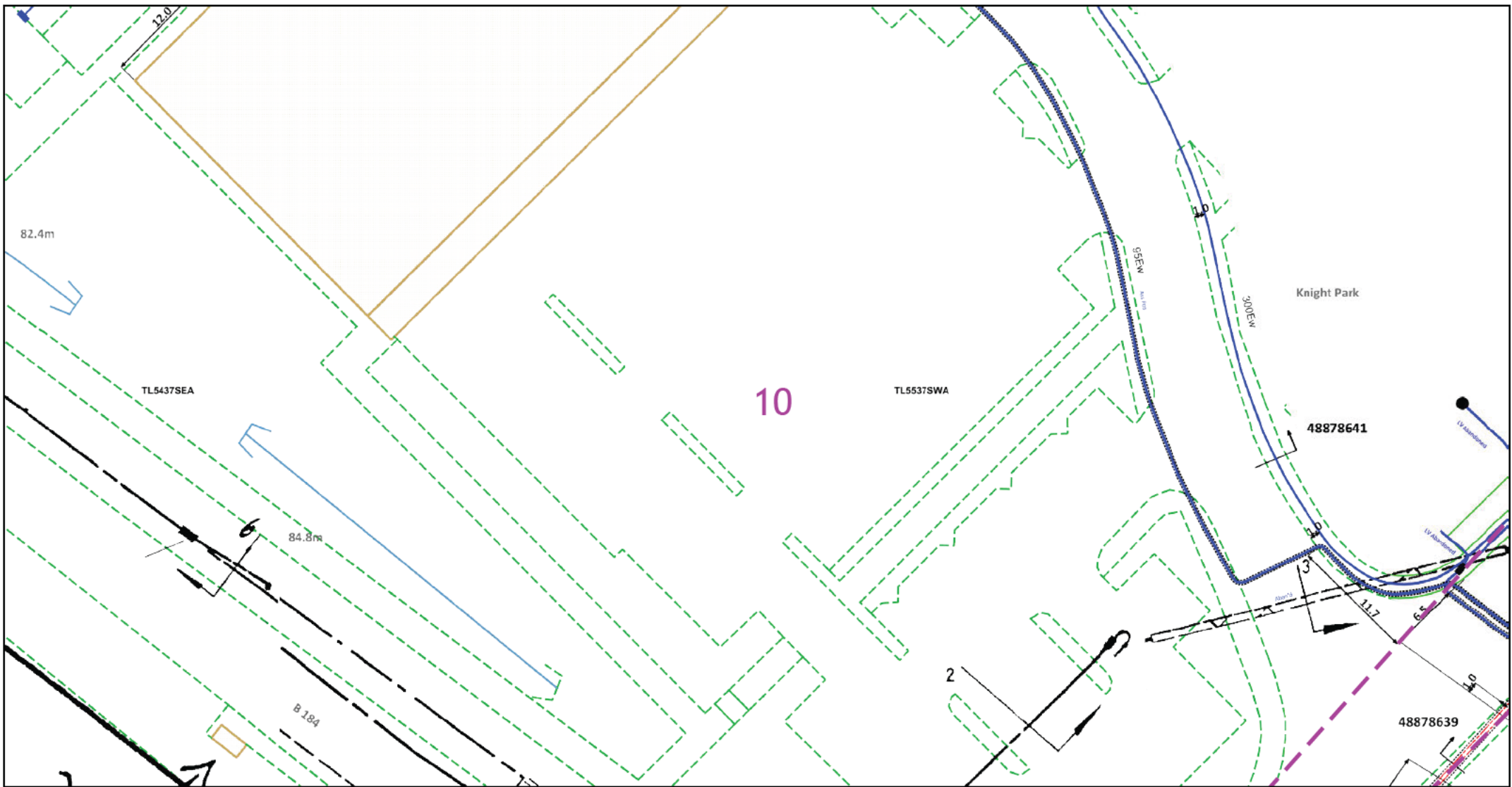
1. UK Power Networks does not warrant that the information provided to you is correct. You rely upon it at your own risk.
2. UK Power Networks does not exclude or limit its liability if it causes the death of any persons or causes personal injury to a person.
3. Subject to paragraph 2 UK Power Networks has no liability to you in contract, in tort (including negligence), for breach of statutory duty or otherwise for any loss, damage, cost, claims, demands, or expenses that you or any third party may suffer or incur as a result of using the information provided whether for physical damage to property or for any economic loss (including without limitation loss of profit, loss of opportunity, loss of savings, loss of goodwill, loss of business, loss of use) or any special or consequential loss or damage whatsoever.
4. This plan has been provided to you on the basis of the terms of use set out in the covering letter that accompanies this plan. If you do not accept and/or do not understand the terms of use set out in the covering letter you must not use the plan and must return it to the sender of the letter.
5. You are responsible for the security of the information provided to you. It must not be given, sold or made available upon payment of a fee to a third party.
6. Please Note: The Overview map does not display UK Power Networks electricity network and should not be used for the location of UK Power Networks assets. For detail of the electricity network please view the relevant page as highlighted in the Overview map.

IF IN DOUBT - ASK! PHONE
 0800 056 5866
 EMERGENCY - If you damage a
 cable or line
 Phone 0800 783 8838 (24hrs)
 URGENTLY



ALWAYS LOOK UP
 BEFORE
 YOU START WORK
 Refer to HSE Guidance
 note G56

Maps produced at 1:2500 scale are Geo-Schematics which show LV mains cables and overhead lines (in some cases all voltages). Prior to carrying out excavations you must refer to the 1:500 records to determine the location of all known underground plant and equipment.



The quality and accuracy of any print will depend on your printer, your computer and its print settings. Measurements scaled from this plan may not match measurements between the same points on the ground.



This plan must be used with the attached 'Symbols' document.

Date Requested: 02/01/2024
 Job Reference: 31975252
 Site Location: 555007 237233
 Requested by: [REDACTED]

Your Schema/Reference:
 S62A/2023/0031
 Scale: 1:500 (When plotted at A4)

1. The position of the apparatus shown on this drawing is believed to be correct but the original landmarks may have been altered since the apparatus was installed.
2. The exact position of the apparatus should be verified - use approved cable avoidance tools prior to excavation using suitable hand tools.
3. It is essential that trial holes are carefully made avoiding the use of mechanical tools or picks until the exact location of all the cables have been determined.
4. It must be assumed that there is a service cable into each property, lamp column and street sign, etc.
5. All cables must be treated as being live unless proved otherwise by UK Power Networks.
6. The information proved must be given to all people working near UK Power Networks plant and equipment. Do not use plans more than 3 months after the issue date for excavation purposes.
7. Please be aware that electric cables/lines belonging to other owners of licensed electricity distribution systems may be present and it is your responsibility to identify their location.
8. Please be aware the Low Voltage Overhead power lines are not currently displayed for the Eastern Region via this service, if you require records on the location of these please contact our Plan Provision team directly via plans@ukpowernetworks.co.uk.

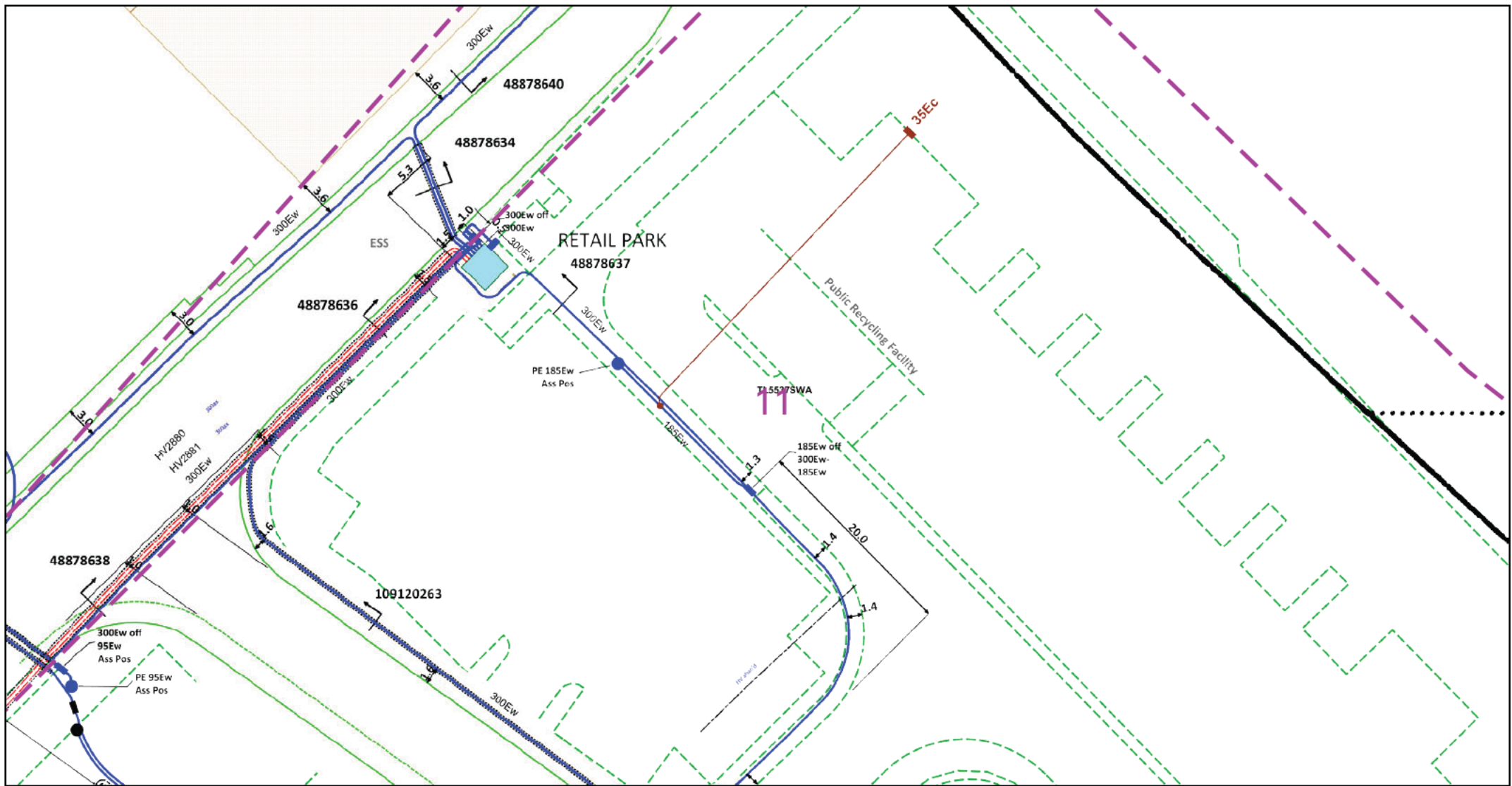
1. UK Power Networks does not warrant that the information provided to you is correct. You rely upon it at your own risk.
2. UK Power Networks does not exclude or limit its liability if it causes the death of any persons or causes personal injury to a person.
3. Subject to paragraph 2 UK Power Networks has no liability to you in contract, in tort (including negligence), for breach of statutory duty or otherwise for any loss, damage, cost, claims, demands, or expenses that you or any third party may suffer or incur as a result of using the information provided whether for physical damage to property or for any economic loss (including without limitation loss of profit, loss of opportunity, loss of savings, loss of goodwill, loss of business, loss of use) or any special or consequential loss or damage whatsoever.
4. This plan has been provided to you on the basis of the terms of use set out in the covering letter that accompanies this plan. If you do not accept and/or do not understand the terms of use set out in the covering letter you must not use the plan and must return it to the sender of the letter.
5. You are responsible for the security of the information provided to you. It must not be given, sold or made available upon payment of a fee to a third party.
6. Please Note: The Overview map does not display UK Power Networks electricity network and should not be used for the location of UK Power Networks assets. For detail of the electricity network please view the relevant page as highlighted in the Overview map.

IF IN DOUBT - ASK! PHONE
 0800 056 5866
 EMERGENCY - If you damage a
 cable or line
 Phone 0800 783 8838 (24hrs)
 URGENTLY



ALWAYS LOOK UP
 BEFORE
 YOU START WORK
 Refer to HSE Guidance
 note G56

Maps produced at 1:2500 scale are Geo-Schematics which show LV mains cables and overhead lines (in some cases all voltages). Prior to carrying out excavations you must refer to the 1:500 records to determine the location of all known underground plant and equipment.



Dig Sites Area: Line:

The quality and accuracy of any print will depend on your printer, your computer and its print settings. Measurements scaled from this plan may not match measurements between the same points on the ground.



This plan must be used with the attached 'Symbols' document.

Date Requested: 02/01/2024
 Job Reference: 31975252
 Site Location: 555007 237233
 Requested by:

Your Schema/Reference:
 S62A/2023/0031
 Scale: 1:500 (When plotted at A4)

1. The position of the apparatus shown on this drawing is believed to be correct but the original landmarks may have been altered since the apparatus was installed.
2. The exact position of the apparatus should be verified - use approved cable avoidance tools prior to excavation using suitable hand tools.
3. It is essential that trial holes are carefully made avoiding the use of mechanical tools or picks until the exact location of all the cables have been determined.
4. It must be assumed that there is a service cable into each property, lamp column and street sign, etc.
5. All cables must be treated as being live unless proved otherwise by UK Power Networks.
6. The information proved must be given to all people working near UK Power Networks plant and equipment. Do not use plans more than 3 months after the issue date for excavation purposes.
7. Please be aware that electric cables/lines belonging to other owners of licensed electricity distribution systems may be present and it is your responsibility to identify their location.
8. Please be aware the Low Voltage Overhead power lines are not currently displayed for the Eastern Region via this service, if you require records on the location of these please contact our Plan Provision team directly via plans@ukpowernetworks.co.uk.

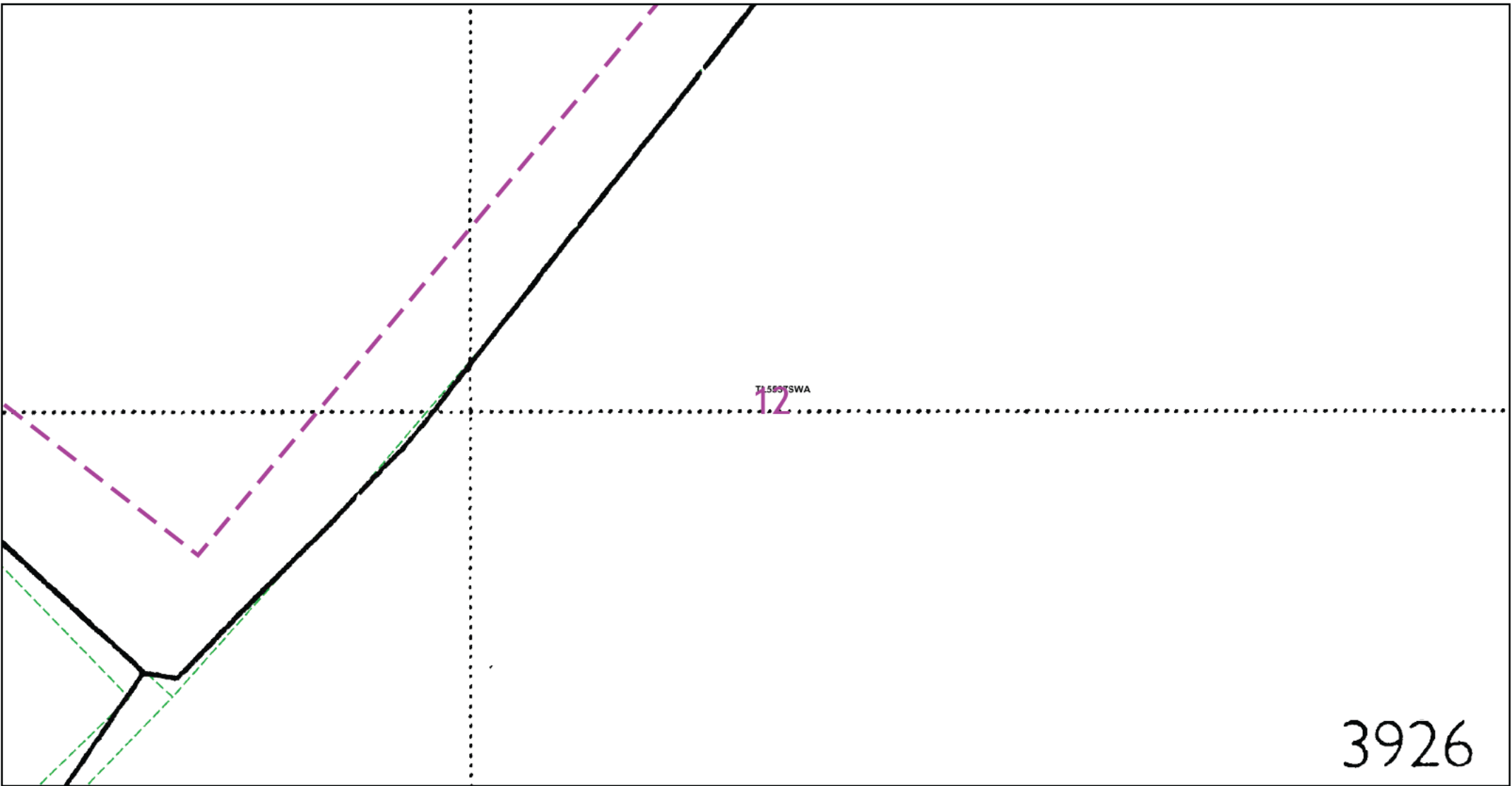
1. UK Power Networks does not warrant that the information provided to you is correct. You rely upon it at your own risk.
2. UK Power Networks does not exclude or limit its liability if it causes the death of any persons or causes personal injury to a person.
3. Subject to paragraph 2 UK Power Networks has no liability to you in contract, in tort (including negligence), for breach of statutory duty or otherwise for any loss, damage, cost, claims, demands, or expenses that you or any third party may suffer or incur as a result of using the information provided whether for physical damage to property or for any economic loss (including without limitation loss of profit, loss of opportunity, loss of savings, loss of goodwill, loss of business, loss of use) or any special or consequential loss or damage whatsoever.
4. This plan has been provided to you on the basis of the terms of use set out in the covering letter that accompanies this plan. If you do not accept and/or do not understand the terms of use set out in the covering letter you must not use the plan and must return it to the sender of the letter.
5. You are responsible for the security of the information provided to you. It must not be given, sold or made available upon payment of a fee to a third party.
6. Please Note: The Overview map does not display UK Power Networks electricity network and should not be used for the location of UK Power Networks assets. For detail of the electricity network please view the relevant page as highlighted in the Overview map.

IF IN DOUBT - ASK! PHONE
 0800 056 5866
 EMERGENCY - If you damage a
 cable or line
 Phone 0800 783 8838 (24hrs)
 URGENTLY



ALWAYS LOOK UP
 BEFORE
 YOU START WORK
 Refer to HSE Guidance
 note G56

Maps produced at 1:2500 scale are Geo-Schematics which show LV mains cables and overhead lines (in some cases all voltages). Prior to carrying out excavations you must refer to the 1:500 records to determine the location of all known underground plant and equipment.



Dig Sites Area: Line:

The quality and accuracy of any print will depend on your printer, your computer and its print settings. Measurements scaled from this plan may not match measurements between the same points on the ground.



This plan must be used with the attached 'Symbols' document.

Date Requested: 02/01/2024
 Job Reference: 31975252
 Site Location: 555007 237233
 Requested by:

Your Schema/Reference:
 S62A/2023/0031
 Scale: 1:500 (When plotted at A4)

1. The position of the apparatus shown on this drawing is believed to be correct but the original landmarks may have been altered since the apparatus was installed.
2. The exact position of the apparatus should be verified - use approved cable avoidance tools prior to excavation using suitable hand tools.
3. It is essential that trial holes are carefully made avoiding the use of mechanical tools or picks until the exact location of all the cables have been determined.
4. It must be assumed that there is a service cable into each property, lamp column and street sign, etc.
5. All cables must be treated as being live unless proved otherwise by UK Power Networks.
6. The information proved must be given to all people working near UK Power Networks plant and equipment. Do not use plans more than 3 months after the issue date for excavation purposes.
7. Please be aware that electric cables/lines belonging to other owners of licensed electricity distribution systems may be present and it is your responsibility to identify their location.
8. Please be aware the Low Voltage Overhead power lines are not currently displayed for the Eastern Region via this service, if you require records on the location of these please contact our Plan Provision team directly via plans@ukpowernetworks.co.uk.

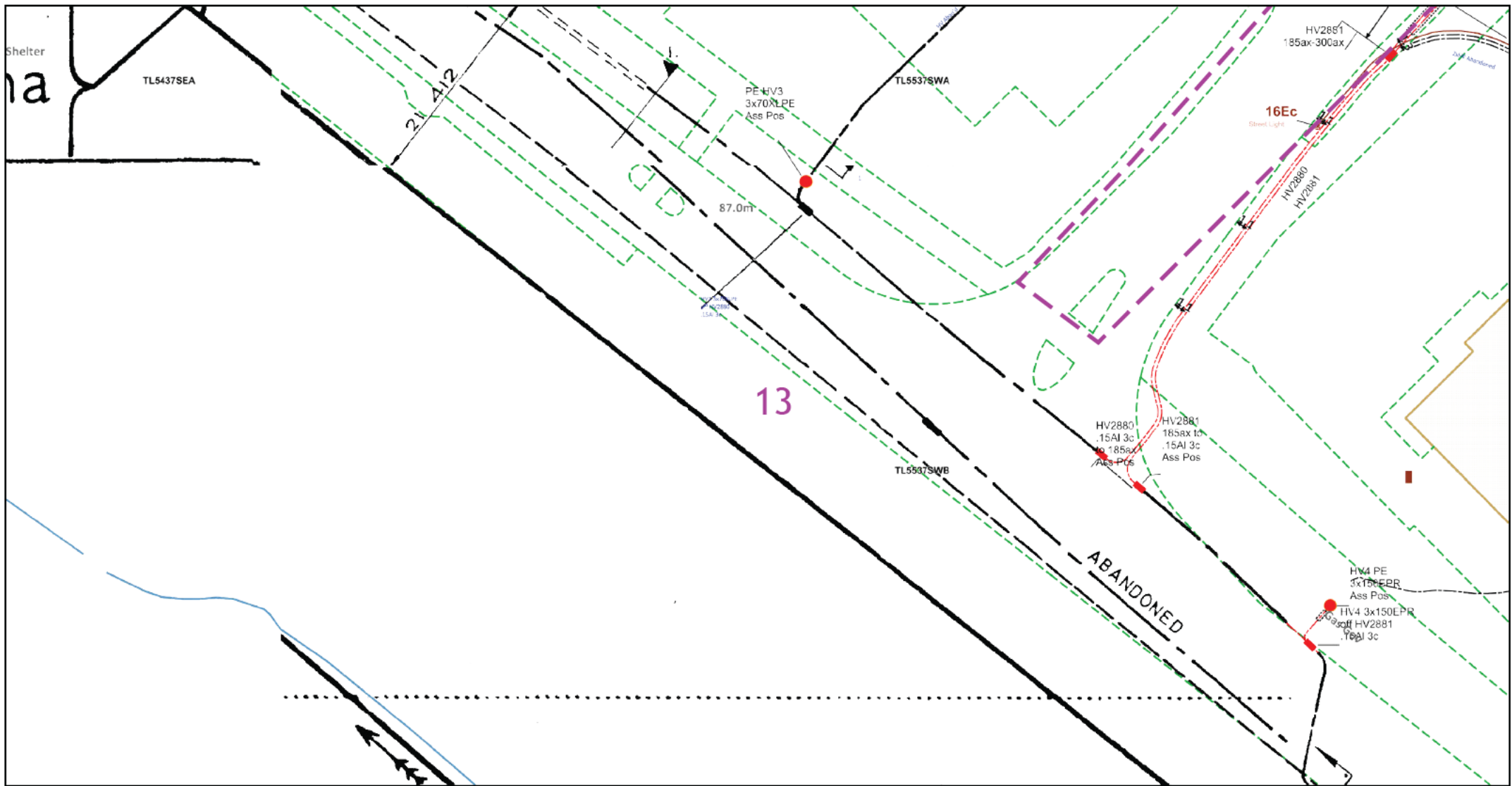
1. UK Power Networks does not warrant that the information provided to you is correct. You rely upon it at your own risk.
2. UK Power Networks does not exclude or limit its liability if it causes the death of any persons or causes personal injury to a person.
3. Subject to paragraph 2 UK Power Networks has no liability to you in contract, in tort (including negligence), for breach of statutory duty or otherwise for any loss, damage, cost, claims, demands, or expenses that you or any third party may suffer or incur as a result of using the information provided whether for physical damage to property or for any economic loss (including without limitation loss of profit, loss of opportunity, loss of savings, loss of goodwill, loss of business, loss of use) or any special or consequential loss or damage whatsoever.
4. This plan has been provided to you on the basis of the terms of use set out in the covering letter that accompanies this plan. If you do not accept and/or do not understand the terms of use set out in the covering letter you must not use the plan and must return it to the sender of the letter.
5. You are responsible for the security of the information provided to you. It must not be given, sold or made available upon payment of a fee to a third party.
6. Please Note: The Overview map does not display UK Power Networks electricity network and should not be used for the location of UK Power Networks assets. For detail of the electricity network please view the relevant page as highlighted in the Overview map.

IF IN DOUBT - ASK! PHONE
 0800 056 5866
 EMERGENCY - If you damage a
 cable or line
 Phone 0800 783 8838 (24hrs)
 URGENTLY



ALWAYS LOOK UP
 BEFORE
 YOU START WORK
 Refer to HSE Guidance
 note G56

Maps produced at 1:2500 scale are Geo-Schematics which show LV mains cables and overhead lines (in some cases all voltages). Prior to carrying out excavations you must refer to the 1:500 records to determine the location of all known underground plant and equipment.



Dig Sites Area: Line:

The quality and accuracy of any print will depend on your printer, your computer and its print settings. Measurements scaled from this plan may not match measurements between the same points on the ground.



This plan must be used with the attached 'Symbols' document.

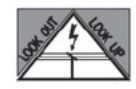
Date Requested: 02/01/2024
 Job Reference: 31975252
 Site Location: 555007 237233
 Requested by:

Your Schema/Reference:
 S62A/2023/0031
 Scale: 1:500 (When plotted at A4)

1. The position of the apparatus shown on this drawing is believed to be correct but the original landmarks may have been altered since the apparatus was installed.
2. The exact position of the apparatus should be verified - use approved cable avoidance tools prior to excavation using suitable hand tools.
3. It is essential that trial holes are carefully made avoiding the use of mechanical tools or picks until the exact location of all the cables have been determined.
4. It must be assumed that there is a service cable into each property, lamp column and street sign, etc.
5. All cables must be treated as being live unless proved otherwise by UK Power Networks.
6. The information proved must be given to all people working near UK Power Networks plant and equipment. Do not use plans more than 3 months after the issue date for excavation purposes.
7. Please be aware that electric cables/lines belonging to other owners of licensed electricity distribution systems may be present and it is your responsibility to identify their location.
8. Please be aware the Low Voltage Overhead power lines are not currently displayed for the Eastern Region via this service, if you require records on the location of these please contact our Plan Provision team directly via plans@ukpowernetworks.co.uk.

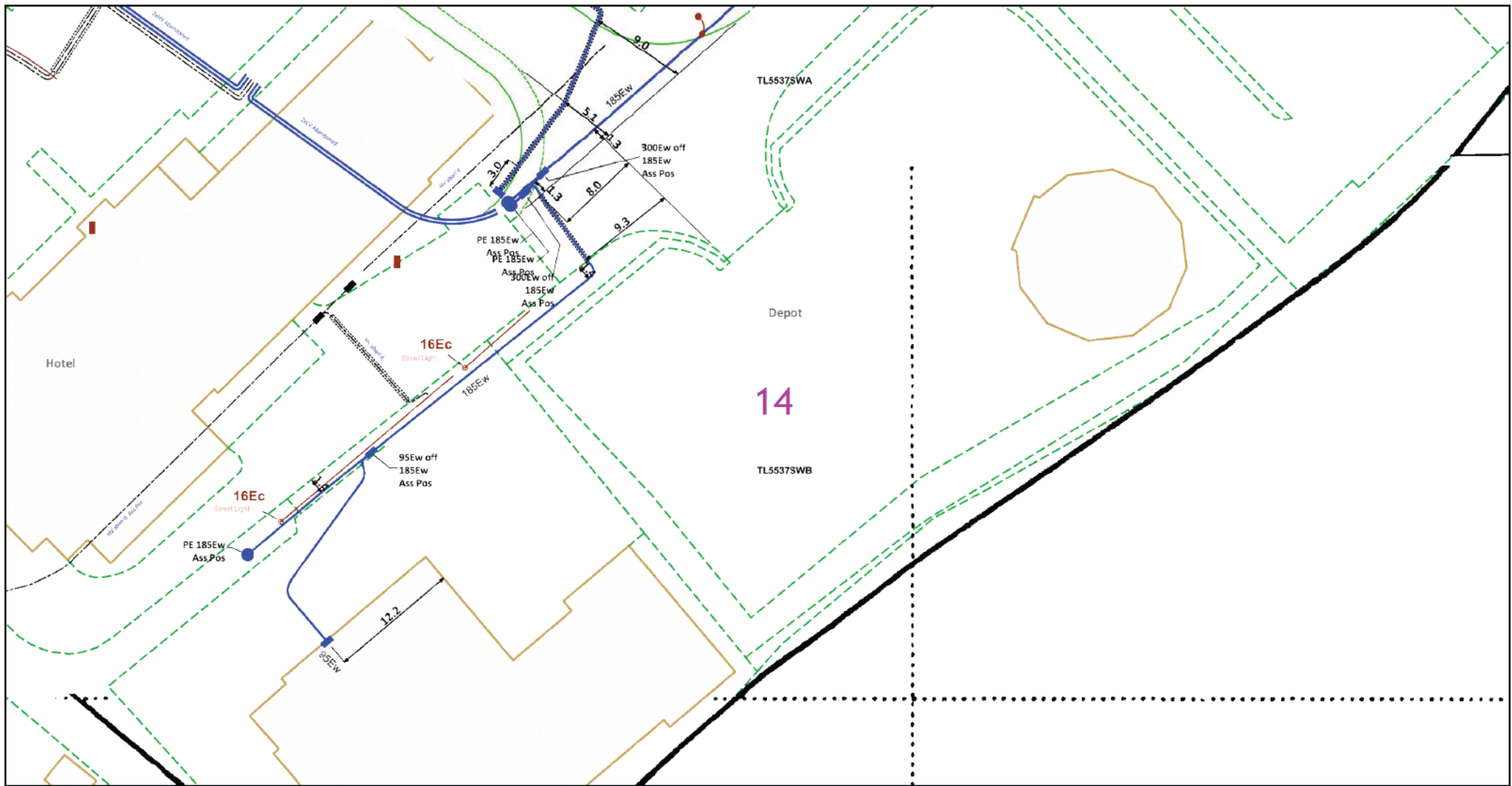
1. UK Power Networks does not warrant that the information provided to you is correct. You rely upon it at your own risk.
2. UK Power Networks does not exclude or limit its liability if it causes the death of any persons or causes personal injury to a person.
3. Subject to paragraph 2 UK Power Networks has no liability to you in contract, in tort (including negligence), for breach of statutory duty or otherwise for any loss, damage, cost, claims, demands, or expenses that you or any third party may suffer or incur as a result of using the information provided whether for physical damage to property or for any economic loss (including without limitation loss of profit, loss of opportunity, loss of savings, loss of goodwill, loss of business, loss of use) or any special or consequential loss or damage whatsoever.
4. This plan has been provided to you on the basis of the terms of use set out in the covering letter that accompanies this plan. If you do not accept and/or do not understand the terms of use set out in the covering letter you must not use the plan and must return it to the sender of the letter.
5. You are responsible for the security of the information provided to you. It must not be given, sold or made available upon payment of a fee to a third party.
6. Please Note: The Overview map does not display UK Power Networks electricity network and should not be used for the location of UK Power Networks assets. For detail of the electricity network please view the relevant page as highlighted in the Overview map.

IF IN DOUBT - ASK! PHONE
 0800 056 5866
 EMERGENCY - If you damage a cable or line
 Phone 0800 783 8838 (24hrs)
 URGENTLY



ALWAYS LOOK UP BEFORE YOU START WORK
 Refer to HSE Guidance note G56

Maps produced at 1:2500 scale are Geo-Schematics which show LV mains cables and overhead lines (in some cases all voltages). Prior to carrying out excavations you must refer to the 1:500 records to determine the location of all known underground plant and equipment.



Dig Sites Area: Line:

The quality and accuracy of any print will depend on your printer, your computer and its print settings. Measurements scaled from this plan may not match measurements between the same points on the ground.



This plan must be used with the attached 'Symbols' document.

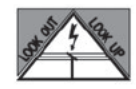
Date Requested: 02/01/2024
 Job Reference: 31975252
 Site Location: 555007 237233
 Requested by:

Your Schema/Reference:
 S62A/2023/0031
 Scale: 1:500 (When plotted at A4)

1. The position of the apparatus shown on this drawing is believed to be correct but the original landmarks may have been altered since the apparatus was installed.
2. The exact position of the apparatus should be verified - use approved cable avoidance tools prior to excavation using suitable hand tools.
3. It is essential that trial holes are carefully made avoiding the use of mechanical tools or picks until the exact location of all the cables have been determined.
4. It must be assumed that there is a service cable into each property, lamp column and street sign, etc.
5. All cables must be treated as being live unless proved otherwise by UK Power Networks.
6. The information proved must be given to all people working near UK Power Networks plant and equipment. Do not use plans more than 3 months after the issue date for excavation purposes.
7. Please be aware that electric cables/lines belonging to other owners of licensed electricity distribution systems may be present and it is your responsibility to identify their location.
8. Please be aware the Low Voltage Overhead power lines are not currently displayed for the Eastern Region via this service, if you require records on the location of these please contact our Plan Provision team directly via plans@ukpowernetworks.co.uk.

1. UK Power Networks does not warrant that the information provided to you is correct. You rely upon it at your own risk.
2. UK Power Networks does not exclude or limit its liability if it causes the death of any persons or causes personal injury to a person.
3. Subject to paragraph 2 UK Power Networks has no liability to you in contract, in tort (including negligence), for breach of statutory duty or otherwise for any loss, damage, cost, claims, demands, or expenses that you or any third party may suffer or incur as a result of using the information provided whether for physical damage to property or for any economic loss (including without limitation loss of profit, loss of opportunity, loss of savings, loss of goodwill, loss of business, loss of use) or any special or consequential loss or damage whatsoever.
4. This plan has been provided to you on the basis of the terms of use set out in the covering letter that accompanies this plan. If you do not accept and/or do not understand the terms of use set out in the covering letter you must not use the plan and must return it to the sender of the letter.
5. You are responsible for the security of the information provided to you. It must not be given, sold or made available upon payment of a fee to a third party.
6. Please Note: The Overview map does not display UK Power Networks electricity network and should not be used for the location of UK Power Networks assets. For detail of the electricity network please view the relevant page as highlighted in the Overview map.

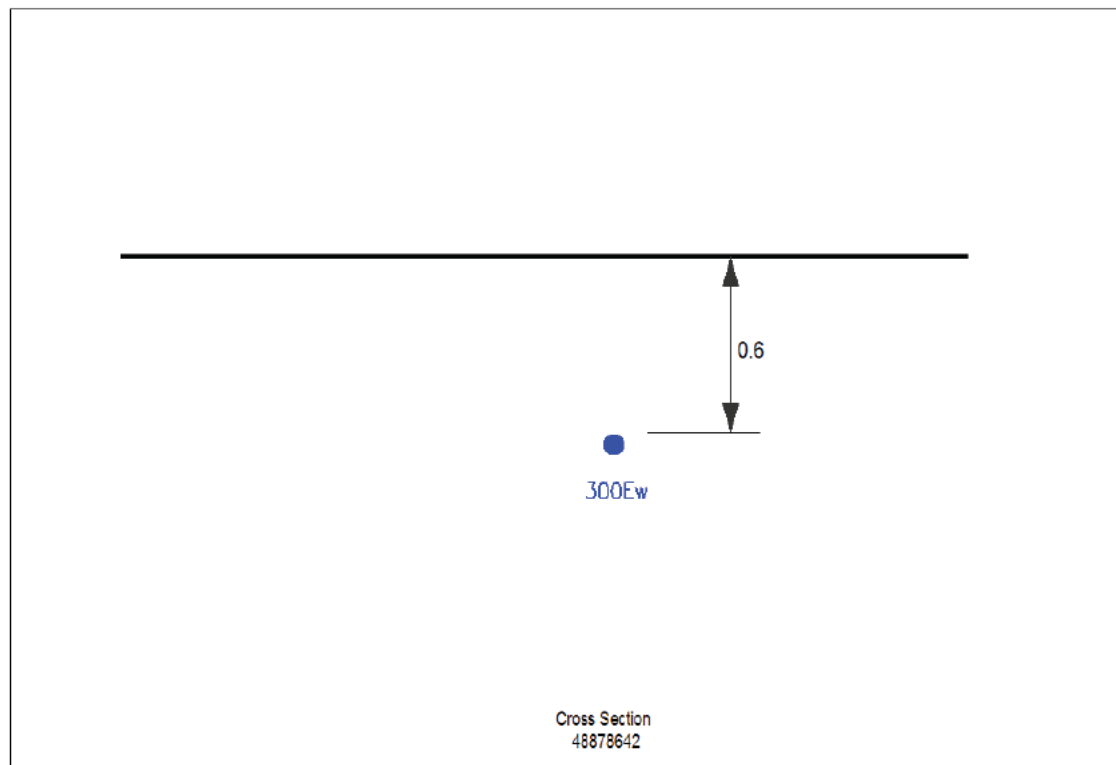
IF IN DOUBT - ASK! PHONE
 0800 056 5866
 EMERGENCY - If you damage a
 cable or line
 Phone 0800 783 8838 (24hrs)
 URGENTLY



ALWAYS LOOK UP
 BEFORE
 YOU START WORK
 Refer to HSE Guidance
 note G56

Maps produced at 1:2500 scale are Geo-Schematics which show LV mains cables and overhead lines (in some cases all voltages). Prior to carrying out excavations you must refer to the 1:500 records to determine the location of all known underground plant and equipment.

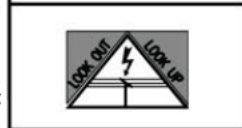
Cross Section : 48878642



1. The position of the apparatus shown on this drawing is believed to be correct but the original landmarks may have been altered since the apparatus was installed.
 2. The exact position of the apparatus should be verified - use approved cable avoidance tools prior to excavation using suitable hand tools.
 3. It is essential that trial holes are carefully made avoiding the use of mechanical tools or picks until the exact location of all the cables have been determined.
 4. It must be assumed that there is a service cable into each property, lamp column and street sign, etc.
 5. All cables must be treated as being live unless proved otherwise by UK Power Networks.
 6. The information proved must be given to all people working near UK Power Networks plant and equipment. Do not use plans more than 3 months after the issue date for excavation purposes.
 7. Please be aware that electric cables/lines belonging to other owners of licensed electricity distribution systems may be present and it is your responsibility to identify their location.

1. UK Power Networks does not warrant that the information provided to you is correct. You rely upon it at your own risk.
 2. UK Power Networks does not exclude or limit its liability if it causes the death of any persons or causes personal injury to a person.
 3. Subject to paragraph 2 UK Power Networks has no liability to you in contract, in tort (including negligence), for breach of statutory duty or otherwise for any loss, damage, cost, claims, demands, or expenses that you or any third party may suffer or incur as a result of using the information provided whether for physical damage to property or for any economic loss (including without limitation loss of profit, loss of opportunity, loss of savings, loss of goodwill, loss of business, loss of use) or any special or consequential loss or damage whatsoever.
 4. This plan has been provided to you on the basis of the terms of use set out in the covering letter that accompanies this plan. If you do not accept and/or do not understand the terms of use set out in the covering letter you must not use the plan and must return it to the sender of the letter.
 5. You are responsible for the security of the information provided to you. It must not be given, sold or made available upon payment of a fee to a third party.

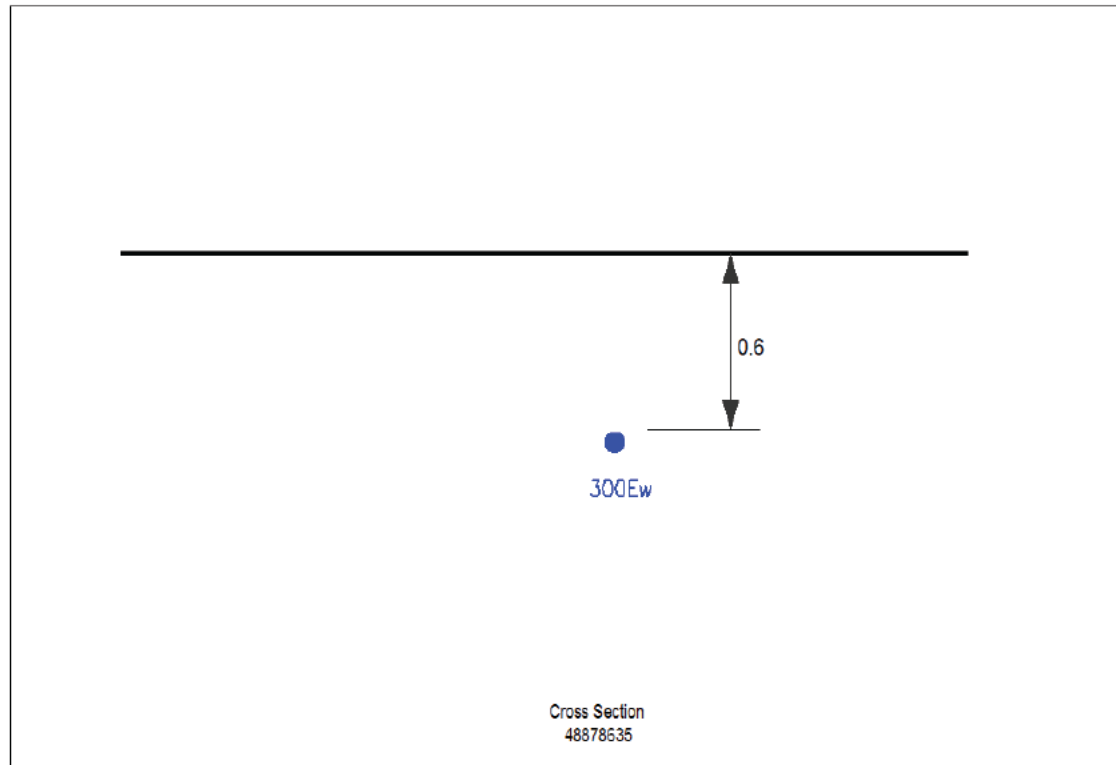
IF IN DOUBT - ASK! PHONE
 0800 056 5866
**EMERGENCY - If you damage
 a cable or line
 Phone 0800 783 8838 (24hrs)
 URGENTLY**



**ALWAYS LOOK UP BEFORE
 YOU START WORK**
 Refer to HSE Guidance note GS6

Maps produced at 1:2500 scale are Geo-Schematics which show LV mains cables and overhead lines (in some cases all voltages). Prior to carrying out excavations you must refer to the 1:500 records to determine the location of all known underground plant and equipment.

Cross Section : 48878635



1. The position of the apparatus shown on this drawing is believed to be correct but the original landmarks may have been altered since the apparatus was installed.
 2. The exact position of the apparatus should be verified - use approved cable avoidance tools prior to excavation using suitable hand tools.
 3. It is essential that trial holes are carefully made avoiding the use of mechanical tools or picks until the exact location of all the cables have been determined.
 4. It must be assumed that there is a service cable into each property, lamp column and street sign, etc.
 5. All cables must be treated as being live unless proved otherwise by UK Power Networks.
 6. The information proved must be given to all people working near UK Power Networks plant and equipment. Do not use plans more than 3 months after the issue date for excavation purposes.
 7. Please be aware that electric cables/lines belonging to other owners of licensed electricity distribution systems may be present and it is your responsibility to identify their location.

1. UK Power Networks does not warrant that the information provided to you is correct. You rely upon it at your own risk.
 2. UK Power Networks does not exclude or limit its liability if it causes the death of any persons or causes personal injury to a person.
 3. Subject to paragraph 2 UK Power Networks has no liability to you in contract, in tort (including negligence), for breach of statutory duty or otherwise for any loss, damage, cost, claims, demands, or expenses that you or any third party may suffer or incur as a result of using the information provided whether for physical damage to property or for any economic loss (including without limitation loss of profit, loss of opportunity, loss of savings, loss of goodwill, loss of business, loss of use) or any special or consequential loss or damage whatsoever.
 4. This plan has been provided to you on the basis of the terms of use set out in the covering letter that accompanies this plan. If you do not accept and/or do not understand the terms of use set out in the covering letter you must not use the plan and must return it to the sender of the letter.
 5. You are responsible for the security of the information provided to you. It must not be given, sold or made available upon payment of a fee to a third party.

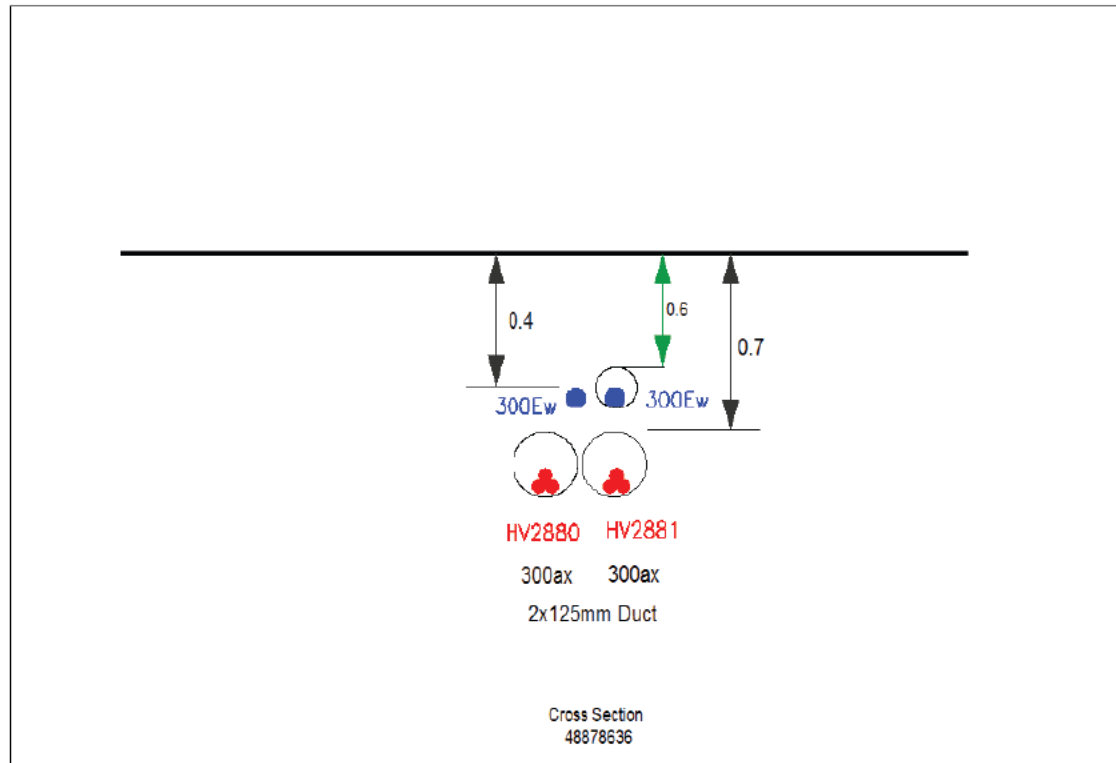
IF IN DOUBT - ASK! PHONE
 0800 056 5866
**EMERGENCY - If you damage
 a cable or line
 Phone 0800 783 8838 (24hrs)
 URGENTLY**



**ALWAYS LOOK UP BEFORE
 YOU START WORK**
 Refer to HSE Guidance note GS6

Maps produced at 1:2500 scale are Geo-Schematics which show LV mains cables and overhead lines (in some cases all voltages). Prior to carrying out excavations you must refer to the 1:500 records to determine the location of all known underground plant and equipment.

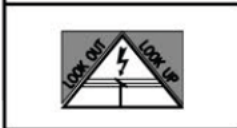
Cross Section : 48878636



1. The position of the apparatus shown on this drawing is believed to be correct but the original landmarks may have been altered since the apparatus was installed.
 2. The exact position of the apparatus should be verified - use approved cable avoidance tools prior to excavation using suitable hand tools.
 3. It is essential that trial holes are carefully made avoiding the use of mechanical tools or picks until the exact location of all the cables have been determined.
 4. It must be assumed that there is a service cable into each property, lamp column and street sign, etc.
 5. All cables must be treated as being live unless proved otherwise by UK Power Networks.
 6. The information proved must be given to all people working near UK Power Networks plant and equipment. Do not use plans more than 3 months after the issue date for excavation purposes.
 7. Please be aware that electric cables/lines belonging to other owners of licensed electricity distribution systems may be present and it is your responsibility to identify their location.

1. UK Power Networks does not warrant that the information provided to you is correct. You rely upon it at your own risk.
 2. UK Power Networks does not exclude or limit its liability if it causes the death of any persons or causes personal injury to a person.
 3. Subject to paragraph 2 UK Power Networks has no liability to you in contract, in tort (including negligence), for breach of statutory duty or otherwise for any loss, damage, cost, claims, demands, or expenses that you or any third party may suffer or incur as a result of using the information provided whether for physical damage to property or for any economic loss (including without limitation loss of profit, loss of opportunity, loss of savings, loss of goodwill, loss of business, loss of use) or any special or consequential loss or damage whatsoever.
 4. This plan has been provided to you on the basis of the terms of use set out in the covering letter that accompanies this plan. If you do not accept and/or do not understand the terms of use set out in the covering letter you must not use the plan and must return it to the sender of the letter.
 5. You are responsible for the security of the information provided to you. It must not be given, sold or made available upon payment of a fee to a third party.

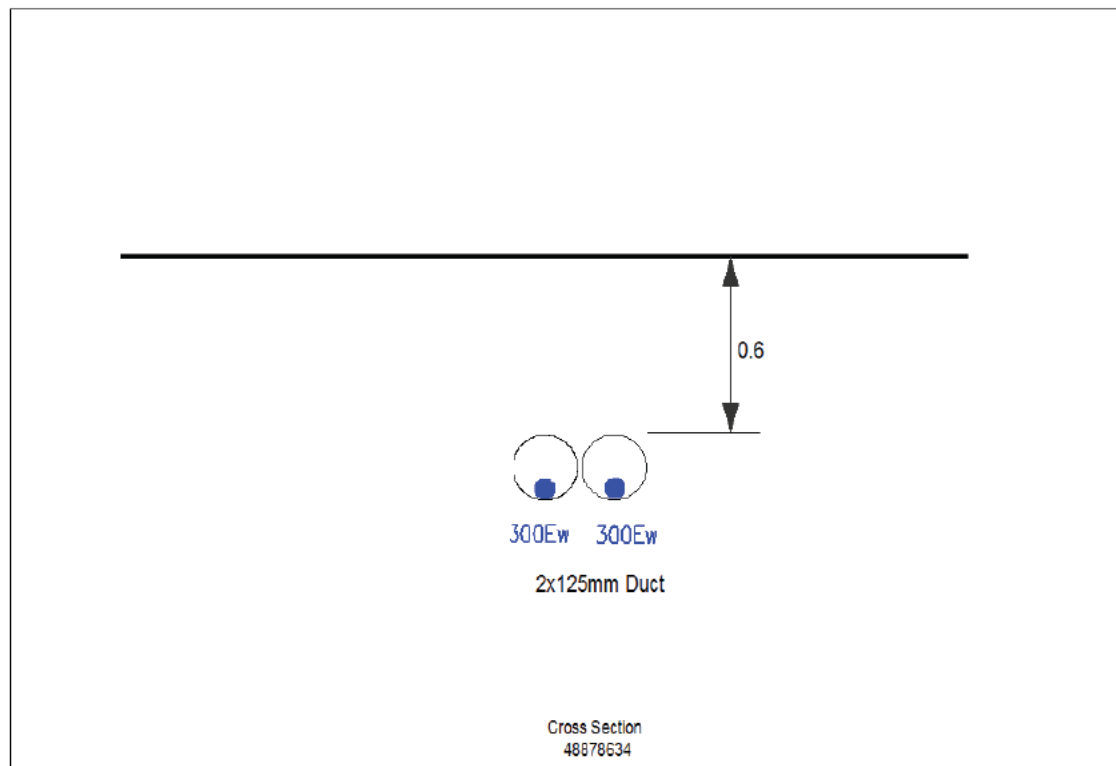
IF IN DOUBT - ASK! PHONE
 0800 056 5866
 EMERGENCY - If you damage
 a cable or line
 Phone 0800 783 8838 (24hrs)
 URGENTLY



ALWAYS LOOK UP BEFORE
 YOU START WORK
 Refer to HSE Guidance note GS6

Maps produced at 1:2500 scale are Geo-Schematics which show LV mains cables and overhead lines (in some cases all voltages). Prior to carrying out excavations you must refer to the 1:500 records to determine the location of all known underground plant and equipment.

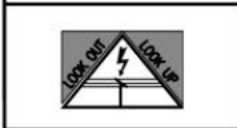
Cross Section : 48878634



1. The position of the apparatus shown on this drawing is believed to be correct but the original landmarks may have been altered since the apparatus was installed.
 2. The exact position of the apparatus should be verified - use approved cable avoidance tools prior to excavation using suitable hand tools.
 3. It is essential that trial holes are carefully made avoiding the use of mechanical tools or picks until the exact location of all the cables have been determined.
 4. It must be assumed that there is a service cable into each property, lamp column and street sign, etc.
 5. All cables must be treated as being live unless proved otherwise by UK Power Networks.
 6. The information proved must be given to all people working near UK Power Networks plant and equipment. Do not use plans more than 3 months after the issue date for excavation purposes.
 7. Please be aware that electric cables/lines belonging to other owners of licensed electricity distribution systems may be present and it is your responsibility to identify their location.

1. UK Power Networks does not warrant that the information provided to you is correct. You rely upon it at your own risk.
 2. UK Power Networks does not exclude or limit its liability if it causes the death of any persons or causes personal injury to a person.
 3. Subject to paragraph 2 UK Power Networks has no liability to you in contract, in tort (including negligence), for breach of statutory duty or otherwise for any loss, damage, cost, claims, demands, or expenses that you or any third party may suffer or incur as a result of using the information provided whether for physical damage to property or for any economic loss (including without limitation loss of profit, loss of opportunity, loss of savings, loss of goodwill, loss of business, loss of use) or any special or consequential loss or damage whatsoever.
 4. This plan has been provided to you on the basis of the terms of use set out in the covering letter that accompanies this plan. If you do not accept and/or do not understand the terms of use set out in the covering letter you must not use the plan and must return it to the sender of the letter.
 5. You are responsible for the security of the information provided to you. It must not be given, sold or made available upon payment of a fee to a third party.

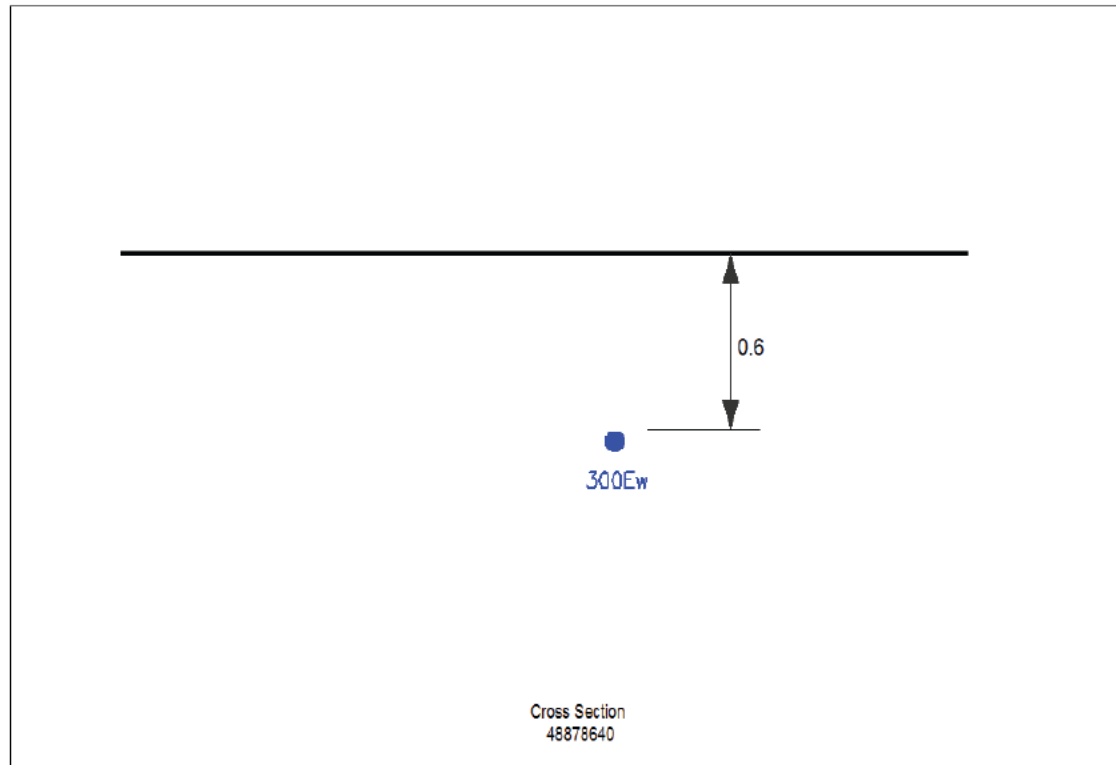
IF IN DOUBT - ASK! PHONE
 0800 056 5866
**EMERGENCY - If you damage
 a cable or line
 Phone 0800 783 8838 (24hrs)
 URGENTLY**



**ALWAYS LOOK UP BEFORE
 YOU START WORK**
 Refer to HSE Guidance note GS6

Maps produced at 1:2500 scale are Geo-Schematics which show LV mains cables and overhead lines (in some cases all voltages). Prior to carrying out excavations you must refer to the 1:500 records to determine the location of all known underground plant and equipment.

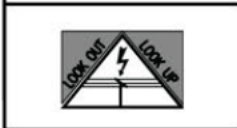
Cross Section : 48878640



1. The position of the apparatus shown on this drawing is believed to be correct but the original landmarks may have been altered since the apparatus was installed.
 2. The exact position of the apparatus should be verified - use approved cable avoidance tools prior to excavation using suitable hand tools.
 3. It is essential that trial holes are carefully made avoiding the use of mechanical tools or picks until the exact location of all the cables have been determined.
 4. It must be assumed that there is a service cable into each property, lamp column and street sign, etc.
 5. All cables must be treated as being live unless proved otherwise by UK Power Networks.
 6. The information proved must be given to all people working near UK Power Networks plant and equipment. Do not use plans more than 3 months after the issue date for excavation purposes.
 7. Please be aware that electric cables/lines belonging to other owners of licensed electricity distribution systems may be present and it is your responsibility to identify their location.

1. UK Power Networks does not warrant that the information provided to you is correct. You rely upon it at your own risk.
 2. UK Power Networks does not exclude or limit its liability if it causes the death of any persons or causes personal injury to a person.
 3. Subject to paragraph 2 UK Power Networks has no liability to you in contract, in tort (including negligence), for breach of statutory duty or otherwise for any loss, damage, cost, claims, demands, or expenses that you or any third party may suffer or incur as a result of using the information provided whether for physical damage to property or for any economic loss (including without limitation loss of profit, loss of opportunity, loss of savings, loss of goodwill, loss of business, loss of use) or any special or consequential loss or damage whatsoever.
 4. This plan has been provided to you on the basis of the terms of use set out in the covering letter that accompanies this plan. If you do not accept and/or do not understand the terms of use set out in the covering letter you must not use the plan and must return it to the sender of the letter.
 5. You are responsible for the security of the information provided to you. It must not be given, sold or made available upon payment of a fee to a third party.

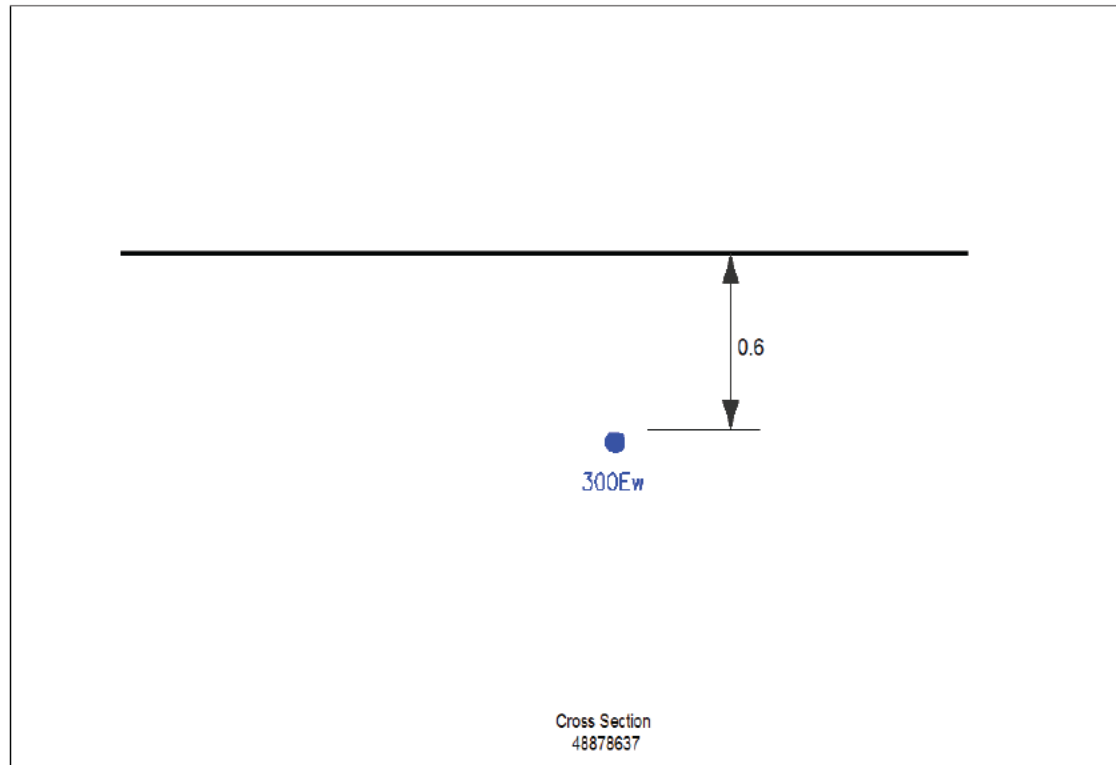
IF IN DOUBT - ASK! PHONE
 0800 056 5866
**EMERGENCY - If you damage
 a cable or line
 Phone 0800 783 8838 (24hrs)
 URGENTLY**



**ALWAYS LOOK UP BEFORE
 YOU START WORK**
 Refer to HSE Guidance note GS6

Maps produced at 1:2500 scale are Geo-Schematics which show LV mains cables and overhead lines (in some cases all voltages). Prior to carrying out excavations you must refer to the 1:500 records to determine the location of all known underground plant and equipment.

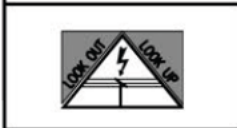
Cross Section : 48878637



1. The position of the apparatus shown on this drawing is believed to be correct but the original landmarks may have been altered since the apparatus was installed.
 2. The exact position of the apparatus should be verified - use approved cable avoidance tools prior to excavation using suitable hand tools.
 3. It is essential that trial holes are carefully made avoiding the use of mechanical tools or picks until the exact location of all the cables have been determined.
 4. It must be assumed that there is a service cable into each property, lamp column and street sign, etc.
 5. All cables must be treated as being live unless proved otherwise by UK Power Networks.
 6. The information proved must be given to all people working near UK Power Networks plant and equipment. Do not use plans more than 3 months after the issue date for excavation purposes.
 7. Please be aware that electric cables/lines belonging to other owners of licensed electricity distribution systems may be present and it is your responsibility to identify their location.

1. UK Power Networks does not warrant that the information provided to you is correct. You rely upon it at your own risk.
 2. UK Power Networks does not exclude or limit its liability if it causes the death of any persons or causes personal injury to a person.
 3. Subject to paragraph 2 UK Power Networks has no liability to you in contract, in tort (including negligence), for breach of statutory duty or otherwise for any loss, damage, cost, claims, demands, or expenses that you or any third party may suffer or incur as a result of using the information provided whether for physical damage to property or for any economic loss (including without limitation loss of profit, loss of opportunity, loss of savings, loss of goodwill, loss of business, loss of use) or any special or consequential loss or damage whatsoever.
 4. This plan has been provided to you on the basis of the terms of use set out in the covering letter that accompanies this plan. If you do not accept and/or do not understand the terms of use set out in the covering letter you must not use the plan and must return it to the sender of the letter.
 5. You are responsible for the security of the information provided to you. It must not be given, sold or made available upon payment of a fee to a third party.

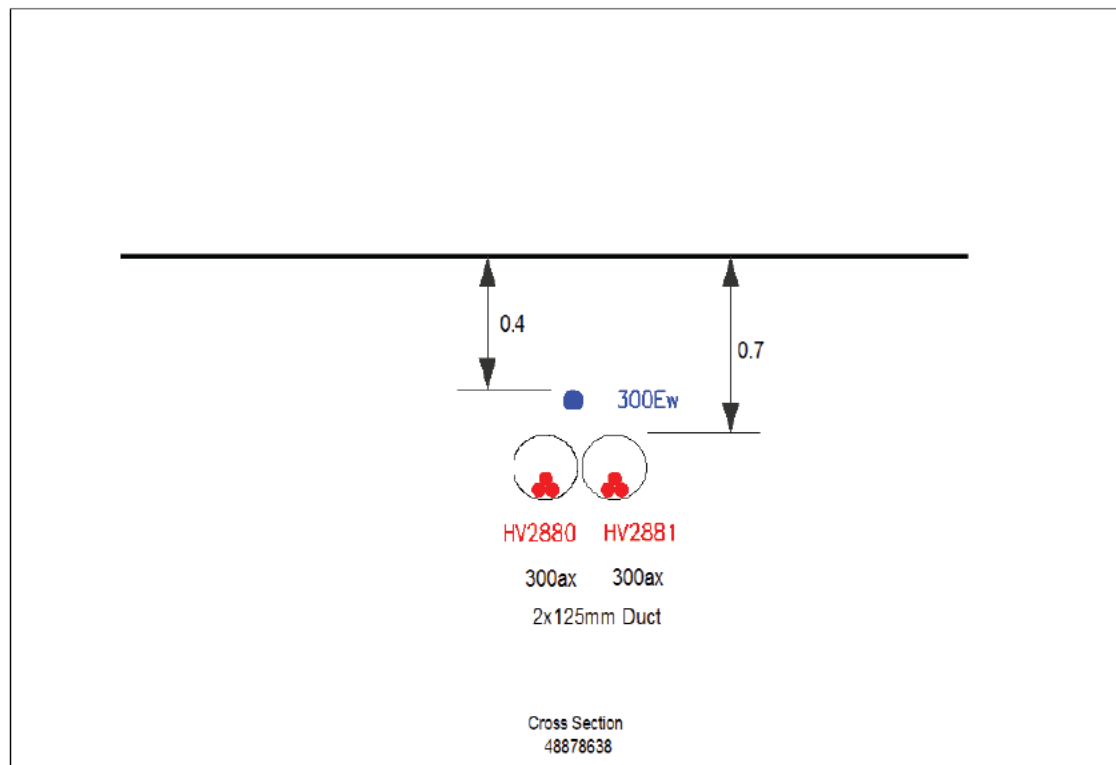
IF IN DOUBT - ASK! PHONE
 0800 056 5866
EMERGENCY - If you damage a cable or line
 Phone 0800 783 8838 (24hrs)
URGENTLY



ALWAYS LOOK UP BEFORE YOU START WORK
 Refer to HSE Guidance note GS6

Maps produced at 1:2500 scale are Geo-Schematics which show LV mains cables and overhead lines (in some cases all voltages). Prior to carrying out excavations you must refer to the 1:500 records to determine the location of all known underground plant and equipment.

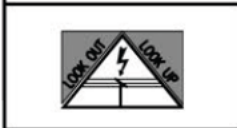
Cross Section : 48878638



1. The position of the apparatus shown on this drawing is believed to be correct but the original landmarks may have been altered since the apparatus was installed.
 2. The exact position of the apparatus should be verified - use approved cable avoidance tools prior to excavation using suitable hand tools.
 3. It is essential that trial holes are carefully made avoiding the use of mechanical tools or picks until the exact location of all the cables have been determined.
 4. It must be assumed that there is a service cable into each property, lamp column and street sign, etc.
 5. All cables must be treated as being live unless proved otherwise by UK Power Networks.
 6. The information proved must be given to all people working near UK Power Networks plant and equipment. Do not use plans more than 3 months after the issue date for excavation purposes.
 7. Please be aware that electric cables/lines belonging to other owners of licensed electricity distribution systems may be present and it is your responsibility to identify their location.

1. UK Power Networks does not warrant that the information provided to you is correct. You rely upon it at your own risk.
 2. UK Power Networks does not exclude or limit its liability if it causes the death of any persons or causes personal injury to a person.
 3. Subject to paragraph 2 UK Power Networks has no liability to you in contract, in tort (including negligence), for breach of statutory duty or otherwise for any loss, damage, cost, claims, demands, or expenses that you or any third party may suffer or incur as a result of using the information provided whether for physical damage to property or for any economic loss (including without limitation loss of profit, loss of opportunity, loss of savings, loss of goodwill, loss of business, loss of use) or any special or consequential loss or damage whatsoever.
 4. This plan has been provided to you on the basis of the terms of use set out in the covering letter that accompanies this plan. If you do not accept and/or do not understand the terms of use set out in the covering letter you must not use the plan and must return it to the sender of the letter.
 5. You are responsible for the security of the information provided to you. It must not be given, sold or made available upon payment of a fee to a third party.

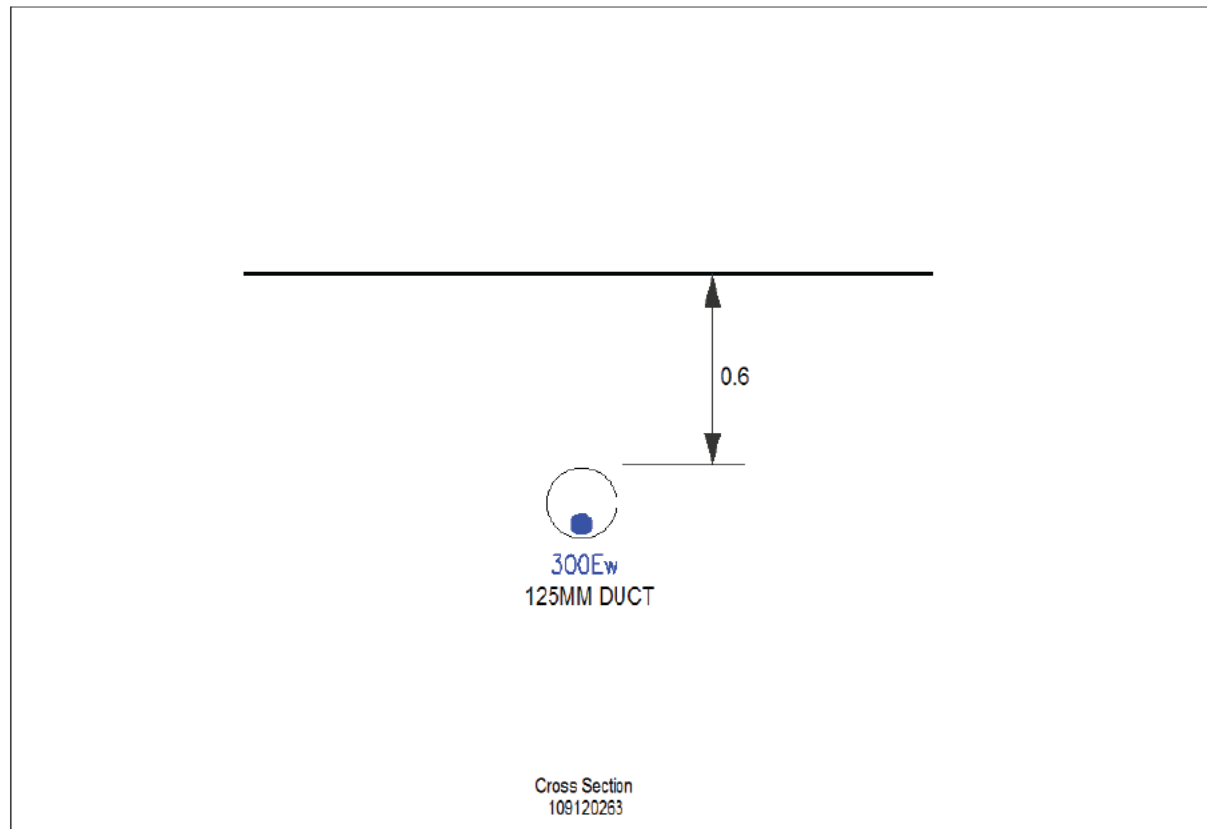
IF IN DOUBT - ASK! PHONE
 0800 056 5866
EMERGENCY - If you damage a cable or line
 Phone 0800 783 8838 (24hrs)
URGENTLY



ALWAYS LOOK UP BEFORE YOU START WORK
 Refer to HSE Guidance note GS6

Maps produced at 1:2500 scale are Geo-Schematics which show LV mains cables and overhead lines (in some cases all voltages). Prior to carrying out excavations you must refer to the 1:500 records to determine the location of all known underground plant and equipment.

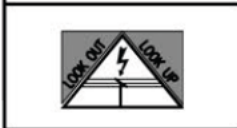
Cross Section : 109120263



1. The position of the apparatus shown on this drawing is believed to be correct but the original landmarks may have been altered since the apparatus was installed.
 2. The exact position of the apparatus should be verified - use approved cable avoidance tools prior to excavation using suitable hand tools.
 3. It is essential that trial holes are carefully made avoiding the use of mechanical tools or picks until the exact location of all the cables have been determined.
 4. It must be assumed that there is a service cable into each property, lamp column and street sign, etc.
 5. All cables must be treated as being live unless proved otherwise by UK Power Networks.
 6. The information proved must be given to all people working near UK Power Networks plant and equipment. Do not use plans more than 3 months after the issue date for excavation purposes.
 7. Please be aware that electric cables/lines belonging to other owners of licensed electricity distribution systems may be present and it is your responsibility to identify their location.

1. UK Power Networks does not warrant that the information provided to you is correct. You rely upon it at your own risk.
 2. UK Power Networks does not exclude or limit its liability if it causes the death of any persons or causes personal injury to a person.
 3. Subject to paragraph 2 UK Power Networks has no liability to you in contract, in tort (including negligence), for breach of statutory duty or otherwise for any loss, damage, cost, claims, demands, or expenses that you or any third party may suffer or incur as a result of using the information provided whether for physical damage to property or for any economic loss (including without limitation loss of profit, loss of opportunity, loss of savings, loss of goodwill, loss of business, loss of use) or any special or consequential loss or damage whatsoever.
 4. This plan has been provided to you on the basis of the terms of use set out in the covering letter that accompanies this plan. If you do not accept and/or do not understand the terms of use set out in the covering letter you must not use the plan and must return it to the sender of the letter.
 5. You are responsible for the security of the information provided to you. It must not be given, sold or made available upon payment of a fee to a third party.

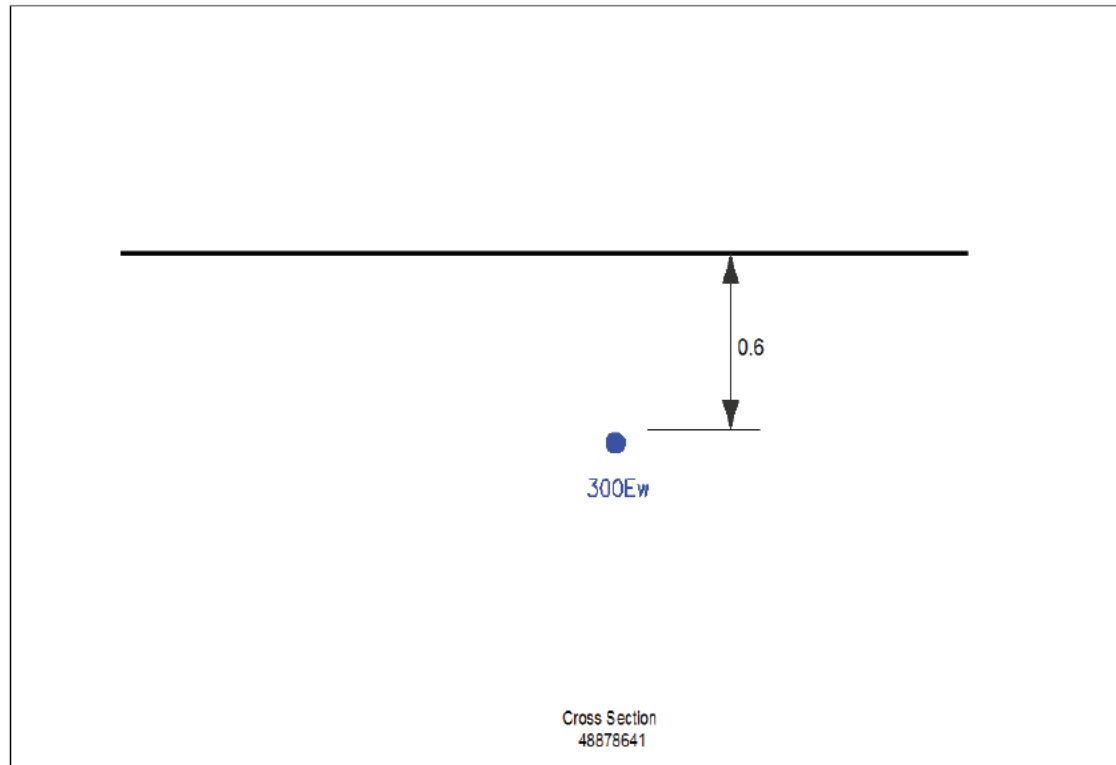
IF IN DOUBT - ASK! PHONE
 0800 056 5866
**EMERGENCY - If you damage
 a cable or line
 Phone 0800 783 8838 (24hrs)
 URGENTLY**



ALWAYS LOOK UP BEFORE
 YOU START WORK
 Refer to HSE Guidance note GS6

Maps produced at 1:2500 scale are Geo-Schematics which show LV mains cables and overhead lines (in some cases all voltages). Prior to carrying out excavations you must refer to the 1:500 records to determine the location of all known underground plant and equipment.

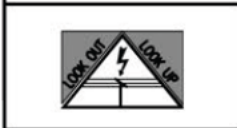
Cross Section : 48878641



1. The position of the apparatus shown on this drawing is believed to be correct but the original landmarks may have been altered since the apparatus was installed.
 2. The exact position of the apparatus should be verified - use approved cable avoidance tools prior to excavation using suitable hand tools.
 3. It is essential that trial holes are carefully made avoiding the use of mechanical tools or picks until the exact location of all the cables have been determined.
 4. It must be assumed that there is a service cable into each property, lamp column and street sign, etc.
 5. All cables must be treated as being live unless proved otherwise by UK Power Networks.
 6. The information proved must be given to all people working near UK Power Networks plant and equipment. Do not use plans more than 3 months after the issue date for excavation purposes.
 7. Please be aware that electric cables/lines belonging to other owners of licensed electricity distribution systems may be present and it is your responsibility to identify their location.

1. UK Power Networks does not warrant that the information provided to you is correct. You rely upon it at your own risk.
 2. UK Power Networks does not exclude or limit its liability if it causes the death of any persons or causes personal injury to a person.
 3. Subject to paragraph 2 UK Power Networks has no liability to you in contract, in tort (including negligence), for breach of statutory duty or otherwise for any loss, damage, cost, claims, demands, or expenses that you or any third party may suffer or incur as a result of using the information provided whether for physical damage to property or for any economic loss (including without limitation loss of profit, loss of opportunity, loss of savings, loss of goodwill, loss of business, loss of use) or any special or consequential loss or damage whatsoever.
 4. This plan has been provided to you on the basis of the terms of use set out in the covering letter that accompanies this plan. If you do not accept and/or do not understand the terms of use set out in the covering letter you must not use the plan and must return it to the sender of the letter.
 5. You are responsible for the security of the information provided to you. It must not be given, sold or made available upon payment of a fee to a third party.

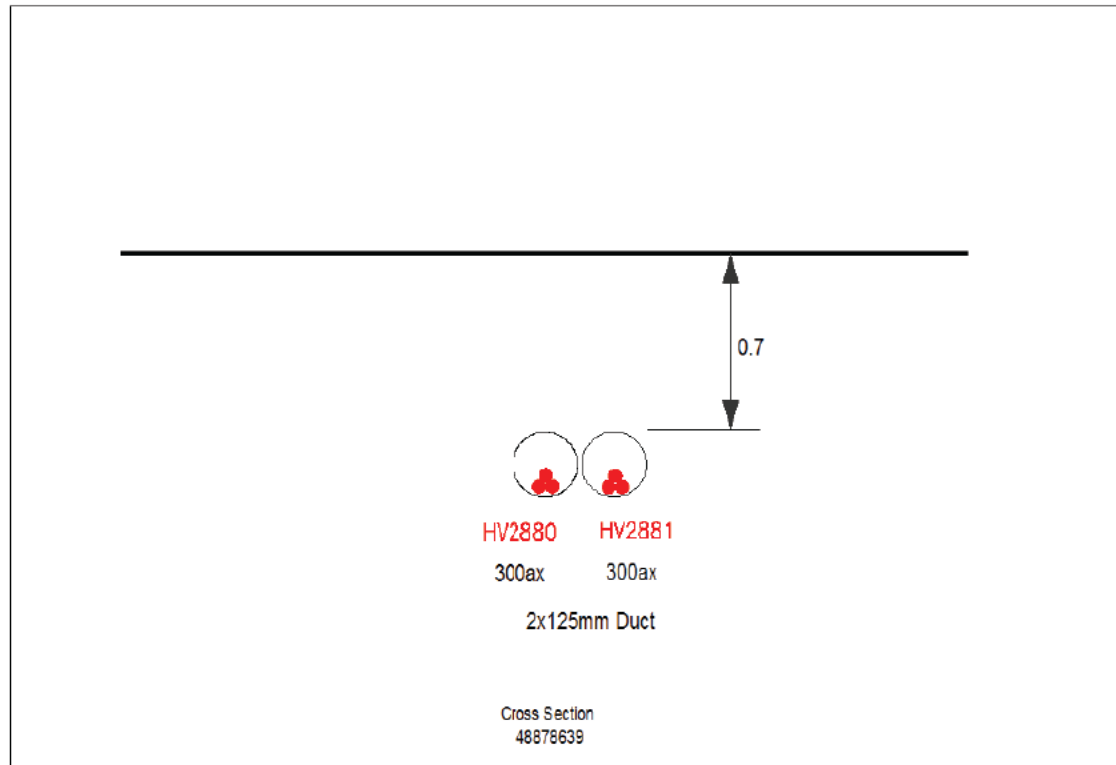
IF IN DOUBT - ASK! PHONE
 0800 056 5866
EMERGENCY - If you damage a cable or line
 Phone 0800 783 8838 (24hrs)
URGENTLY



ALWAYS LOOK UP BEFORE YOU START WORK
 Refer to HSE Guidance note GS6

Maps produced at 1:2500 scale are Geo-Schematics which show LV mains cables and overhead lines (in some cases all voltages). Prior to carrying out excavations you must refer to the 1:500 records to determine the location of all known underground plant and equipment.

Cross Section : 48878639



1. The position of the apparatus shown on this drawing is believed to be correct but the original landmarks may have been altered since the apparatus was installed.
 2. The exact position of the apparatus should be verified - use approved cable avoidance tools prior to excavation using suitable hand tools.
 3. It is essential that trial holes are carefully made avoiding the use of mechanical tools or picks until the exact location of all the cables have been determined.
 4. It must be assumed that there is a service cable into each property, lamp column and street sign, etc.
 5. All cables must be treated as being live unless proved otherwise by UK Power Networks.
 6. The information proved must be given to all people working near UK Power Networks plant and equipment. Do not use plans more than 3 months after the issue date for excavation purposes.
 7. Please be aware that electric cables/lines belonging to other owners of licensed electricity distribution systems may be present and it is your responsibility to identify their location.

1. UK Power Networks does not warrant that the information provided to you is correct. You rely upon it at your own risk.
 2. UK Power Networks does not exclude or limit its liability if it causes the death of any persons or causes personal injury to a person.
 3. Subject to paragraph 2 UK Power Networks has no liability to you in contract, in tort (including negligence), for breach of statutory duty or otherwise for any loss, damage, cost, claims, demands, or expenses that you or any third party may suffer or incur as a result of using the information provided whether for physical damage to property or for any economic loss (including without limitation loss of profit, loss of opportunity, loss of savings, loss of goodwill, loss of business, loss of use) or any special or consequential loss or damage whatsoever.
 4. This plan has been provided to you on the basis of the terms of use set out in the covering letter that accompanies this plan. If you do not accept and/or do not understand the terms of use set out in the covering letter you must not use the plan and must return it to the sender of the letter.
 5. You are responsible for the security of the information provided to you. It must not be given, sold or made available upon payment of a fee to a third party.

IF IN DOUBT - ASK! PHONE
 0800 056 5866
EMERGENCY - If you damage a cable or line
 Phone 0800 783 8838 (24hrs)
URGENTLY



ALWAYS LOOK UP BEFORE YOU START WORK
 Refer to HSE Guidance note GS6

Maps produced at 1:2500 scale are Geo-Schematics which show LV mains cables and overhead lines (in some cases all voltages). Prior to carrying out excavations you must refer to the 1:500 records to determine the location of all known underground plant and equipment.

UK Power Networks Feedback Tool

Please help UK Power Networks improve the accuracy of their network records and help make it safer for all those working around them in future.

All you need to do is:

1. Use your phone camera to scan the QR code:
2. Provide feedback on what you have found on site (good or bad)
3. Upload a photo if needed



Thank you for making the area a safer place to dig.

UK Power Networks, working with LSBUD