

# Algorithm 1

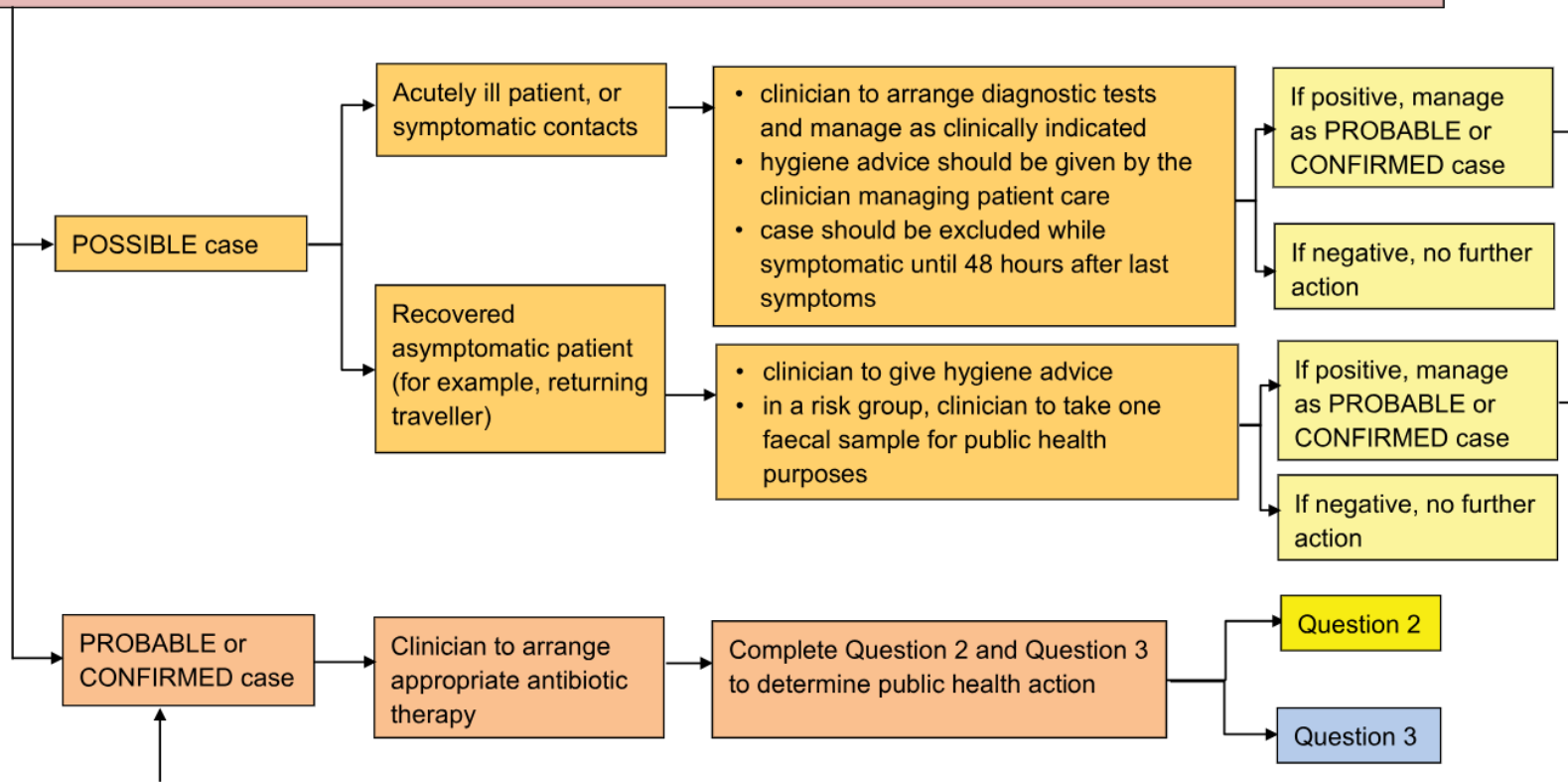
## QUESTION 1

1a) Does the case fit the case definitions for a POSSIBLE, PROBABLE or CONFIRMED case?

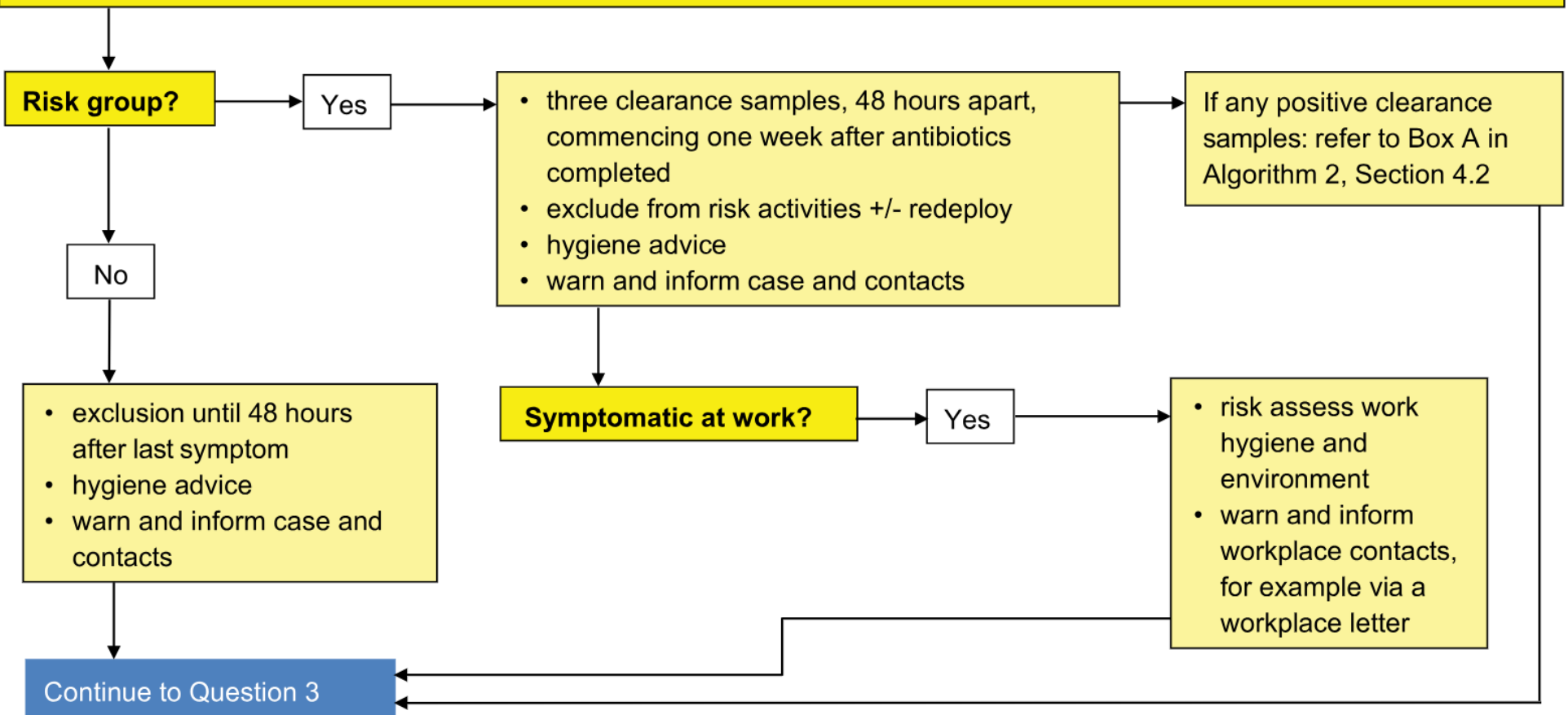
1b) Is the case symptomatic?

1c) Is the case aware of anyone else with the same symptoms?

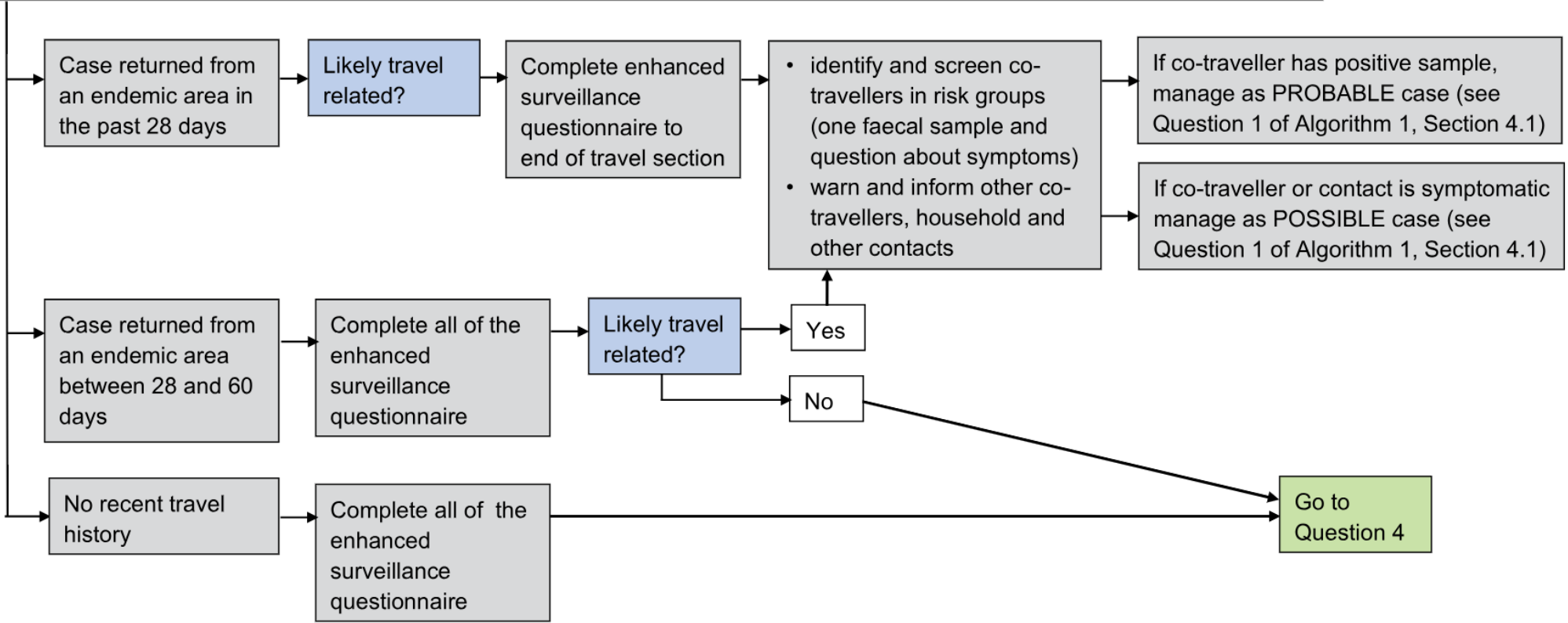
(Refer to Section 3.1)



**QUESTION 2. Is the case in a risk group? Were they at work whilst symptomatic?**  
(Refer to Section 3.4)



**QUESTION 3. Did the case travel to an endemic area?**  
(95% of cases who have a travel history develop symptoms within 28 days of return from an endemic area. See Section 3.1 for endemic areas.)



**QUESTION 4.**

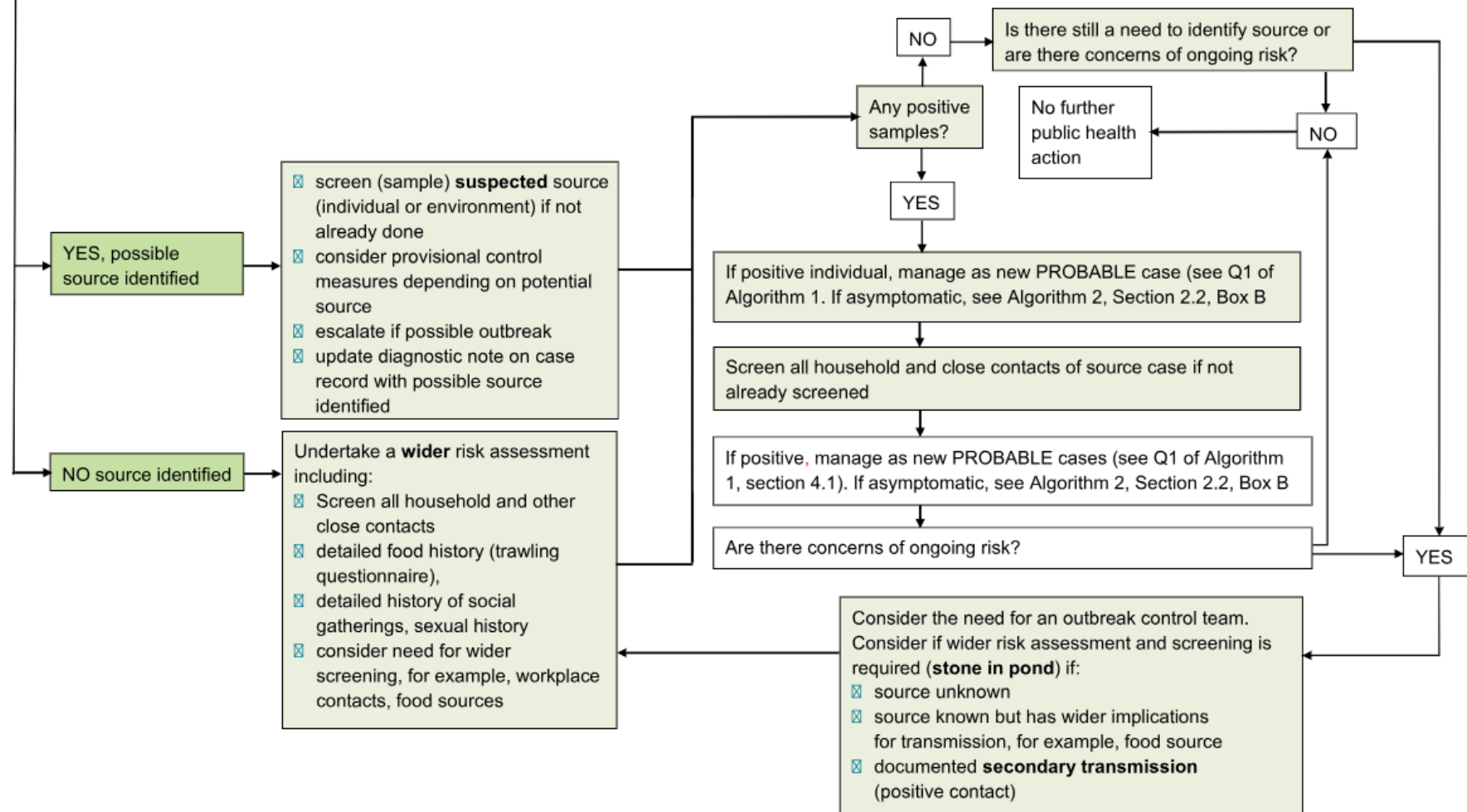
Note: For cases with no recent travel history and/or for whom travel is an unlikely source of infection, further contact tracing and assessment of source is necessary.

4a) Does the case have a documented history of previous enteric fever?

If YES, move to Algorithm 2, Section 4.2, Box C. If NO, go on to next step 4b

4b) Does the initial risk assessment identify a possible source of transmission? For example:

- a contact with similar symptoms or with a travel history
- a confirmed epidemiological link with a known case



# Algorithm 2

