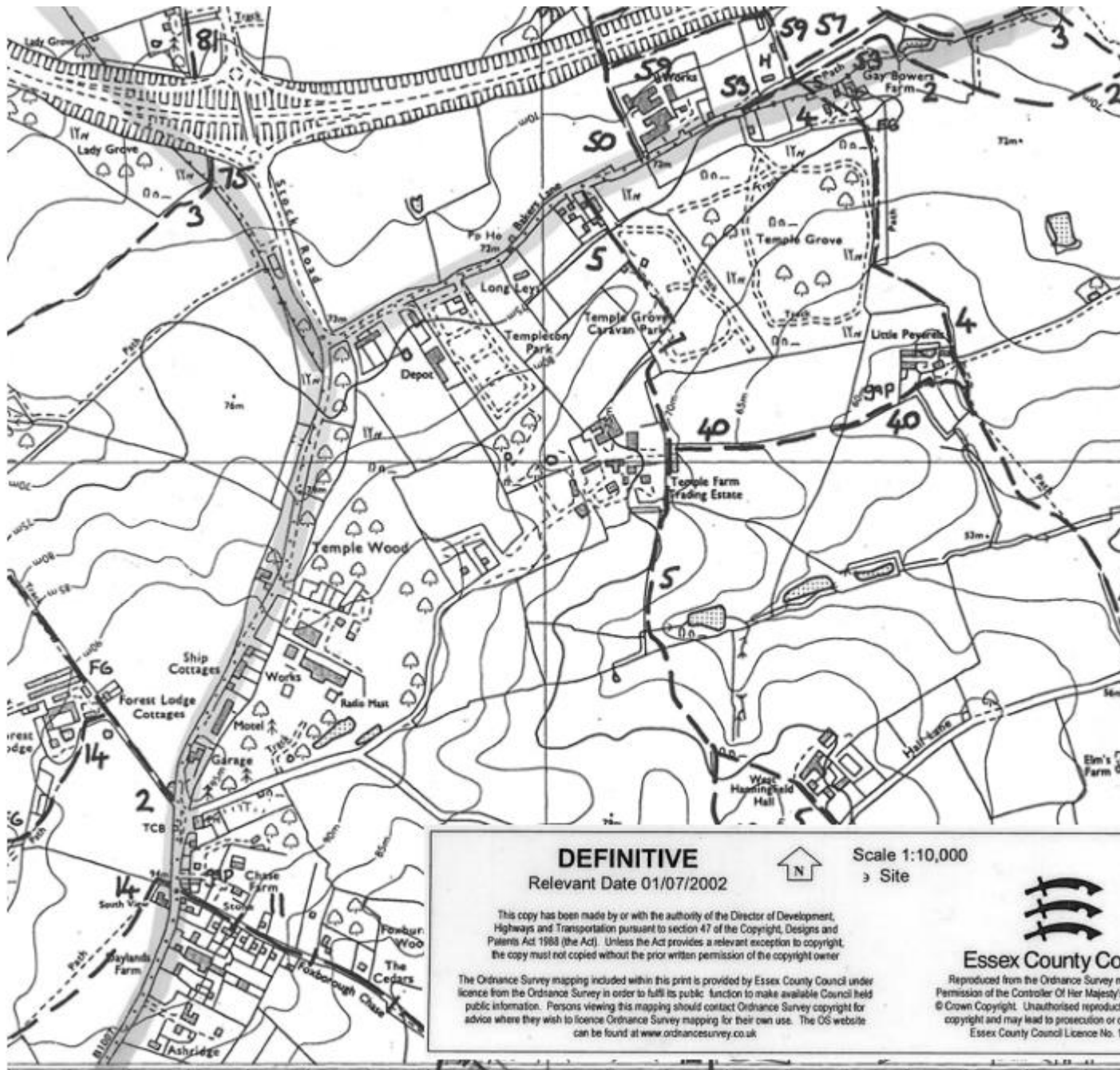


# The Definitive Map

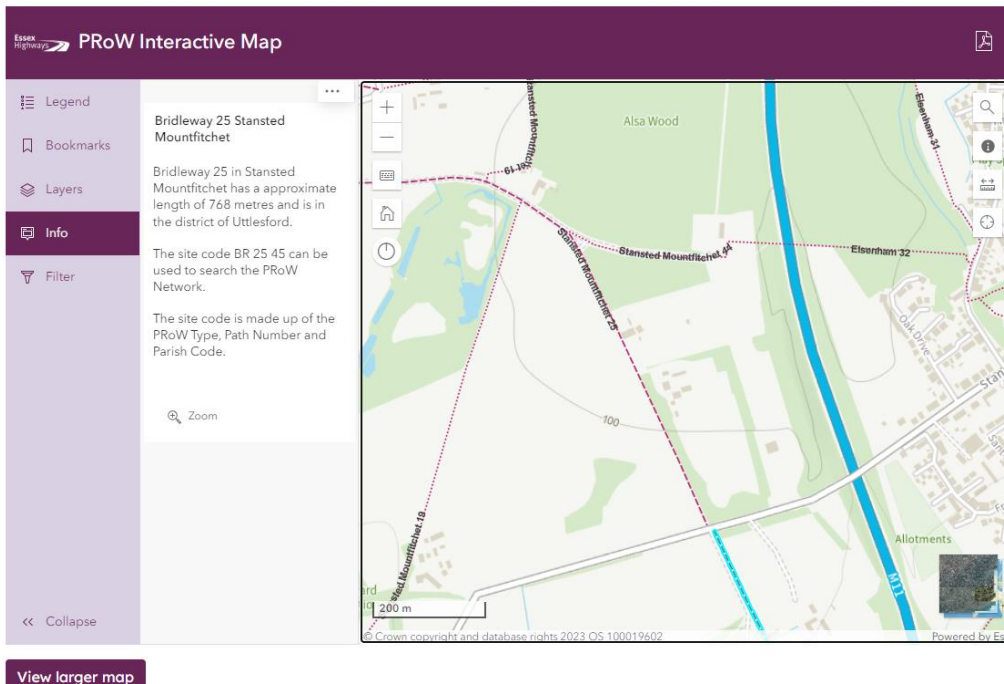


Public Rights of Way are protected by law and can only be altered by legal order. The Definitive Map is a statutory document which is conclusive in law as to the existence and location of Public Rights of Way. The map is accompanied by Definitive Statements which give a brief description of each path, and by a series of Definitive Map Modification Orders which record any changes made since the publication of the current Definitive Map in 2002.

The statutory Definitive Map, together with its accompanying Statements and Modification Orders, cannot be viewed online. However, our [digital interactive map](#) does show the Public Rights of Way network on top of the latest Ordnance Survey background maps, and this can be used for most general reference

purposes. If there is a particular dispute, or you need to see the statutory Definitive Map for a specific location, please email [Highway Records](#).

The Definitive Map is under continuous review. If anyone believes a public path is shown incorrectly, or a public path has been established which is not on the map, they may apply to modify it. Please see [Applications to Modify the Definitive Map](#).



Bridleway 25 Stansted Mountfitchet

### Zoom

Bridleway 25 in Stansted Mountfitchet has a approximate length of 768 metres and is in the district of Uttlesford.

The site code BR 25 45 can be used to search the PRow Network.

The site code is made up of the PRow Type, Path Number and Parish Code.