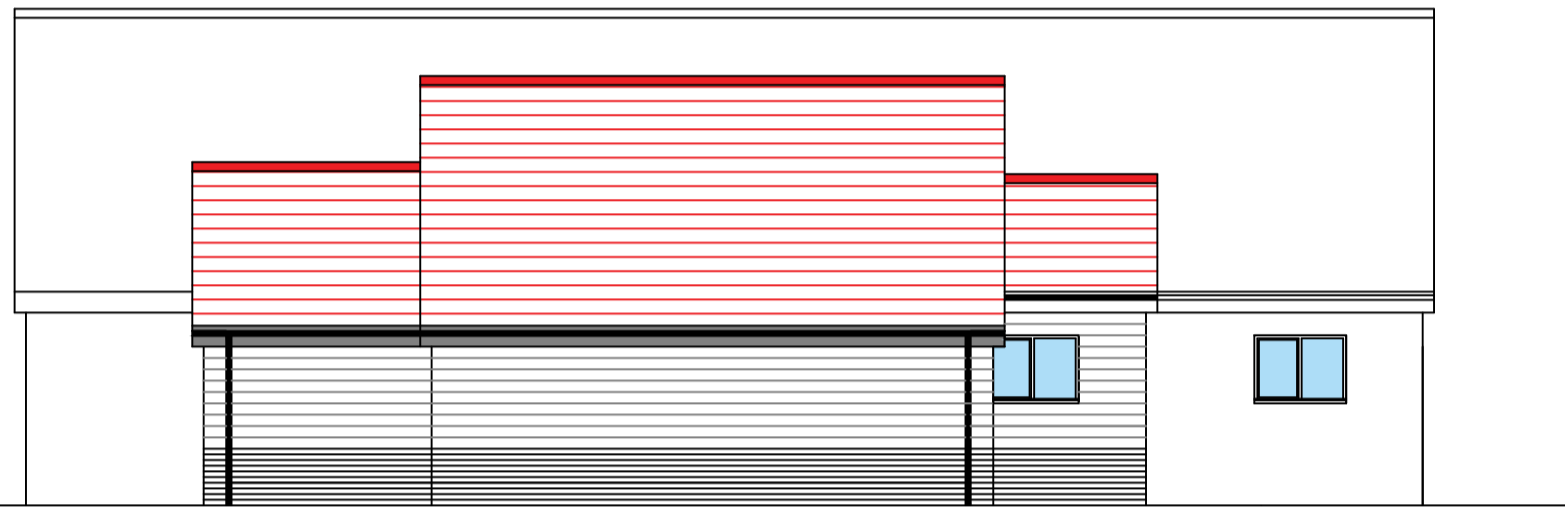


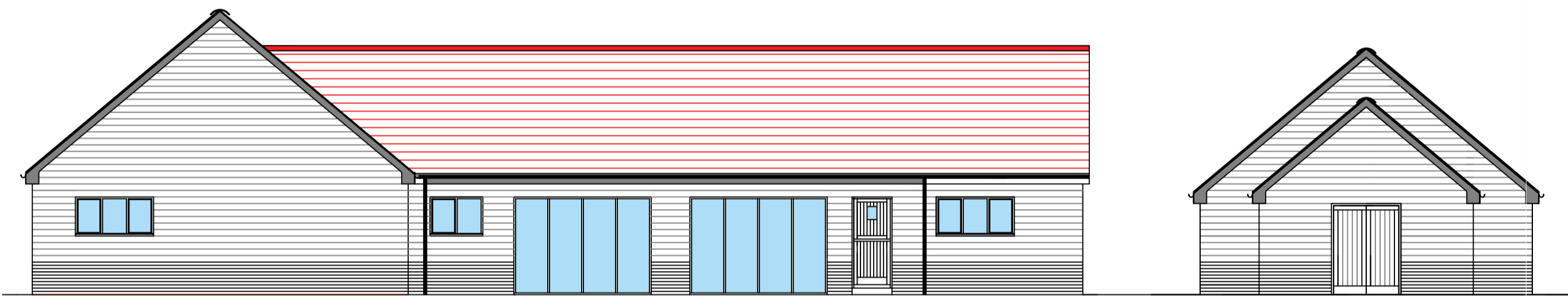
At Building Regulation stage each dwelling will be assessed separately for the optimum use of roof mounted solar panels to inform the energy use and SAP calculations in order to satisfy Approved document L.



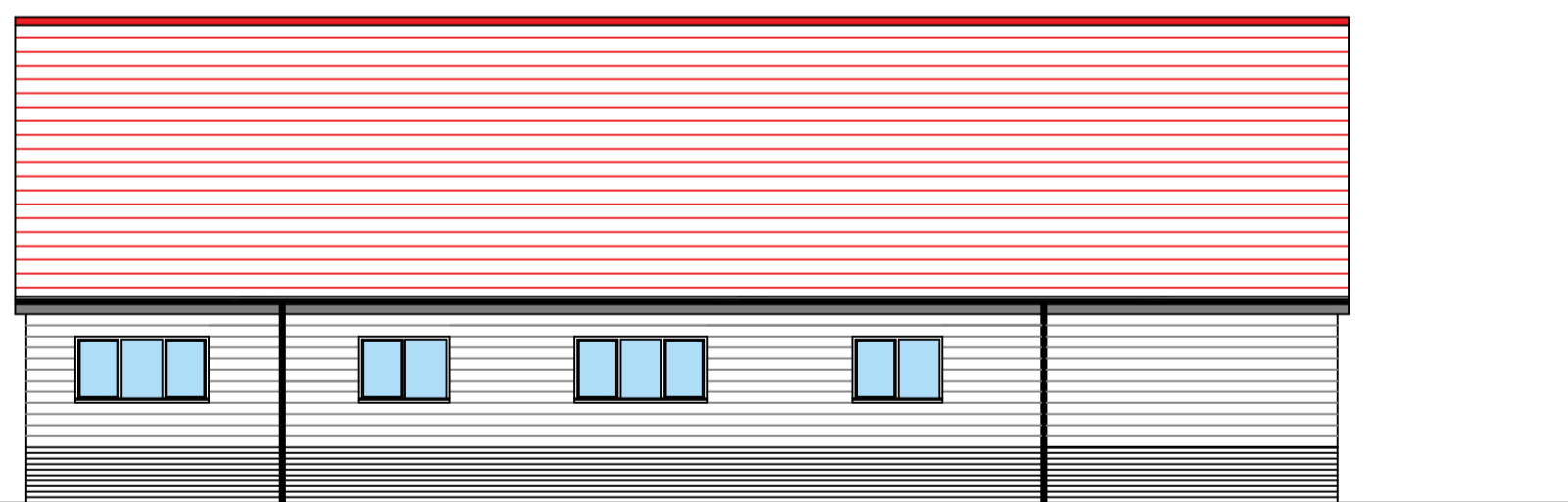
Elevation A



Elevation B



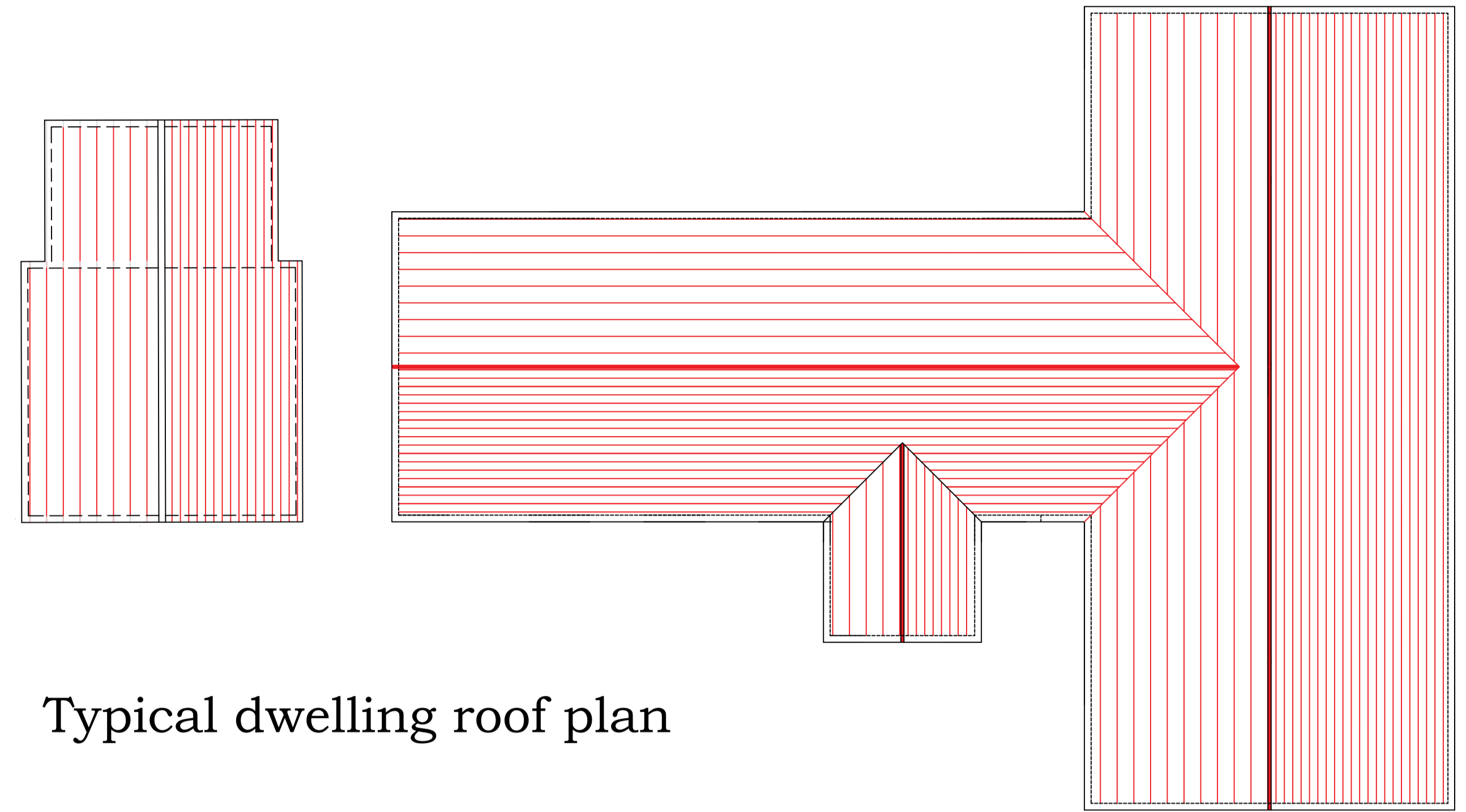
Elevation C



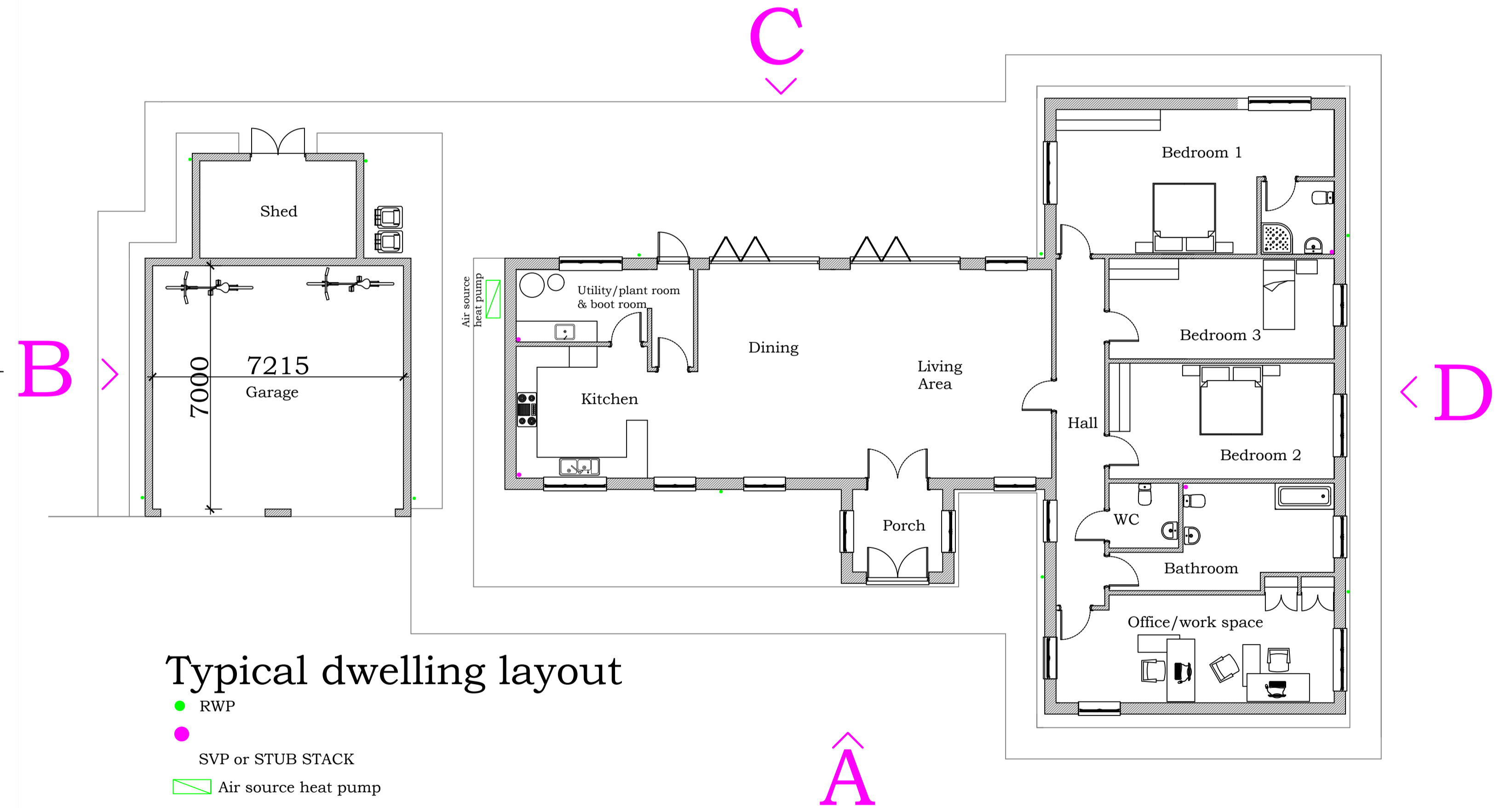
Elevation D

External materials

- Concrete tiles to roof with Upvc gutters, downpipes, fascias, bargeboards and soffites
- Upvc windows, timber doors
- Stained timber weatherboarding above facing brick plinth
- Timber doors to outbuilding



Typical dwelling roof plan



Residential development of 5 dwellings
 Eastfield Stables, Elsenham Road, Stansted CM24 8SS
 Drawing RMDS/ES/23/003
 Typical dwelling details
 Scale 1: 100 @ A1

RANGER MANAGEMENT & DESIGN SERVICES
 13 Berners End, Barnston, Dunmow CM6 1LY
 t: 01371 874073 m: 07913 289362 e: planrmds@gmail.com