

LEGEND

- SITE BOUNDARY
- EXISTING TREES TO BE RETAINED
- EXISTING WOODLAND TO BE RETAINED
- SPECIES-RICH GRASSLAND
- WILDFLOWER MEADOW SEED MIX
- GRASS SEED TO PRIVATE REAR GARDENS
- WETLAND PLANTING
- SWALE / MARGINAL PLANTING
- ORNAMENTAL HEDGE PLANTING
- ORNAMENTAL SHRUB PLANTING
- ALLOTMENT SPACE
- LANDSCAPE MOUNDING
- PROPOSED TREE PLANTING
- ORCHARD TREE PLANTING
- MOWN GRASS STRIP
- PLANTING CHARACTER AREA 1 - RESIDENTIAL PLOT PLANTING
- PLANTING CHARACTER AREA 2 - MARGINAL PLANTING
- PLANTING CHARACTER AREA 3 - NATIVE GREEN EDGE
- PLANTING CHARACTER AREA 4 - WILDLIFE AREA
- PLANTING CHARACTER AREA 5 - COUNTRYSIDE PARK
- PLANTING CHARACTER AREA 6 - COMMUNITY ORCHARD REFER TO TREE PLANTING PLANS FOR SPECIES

MAINTENANCE AND IMPLEMENTATION

GENERAL
All planting tree and shrub planting to be certified British stock or have been kept in a UK nursery for at least 1no. growing season. All trees and shrubs to comply with BS 3936. All plants shall be transported and manouredd in accordance with the Code of Practice for Plant Handling (CPSE).

Handling should be to HTS 'Handling and Establishing Landscape Plants'

Planting shall be carried out between October and March. The soil condition should be moist, friable and (excepting aquatic/marginal planting) not waterlogged.

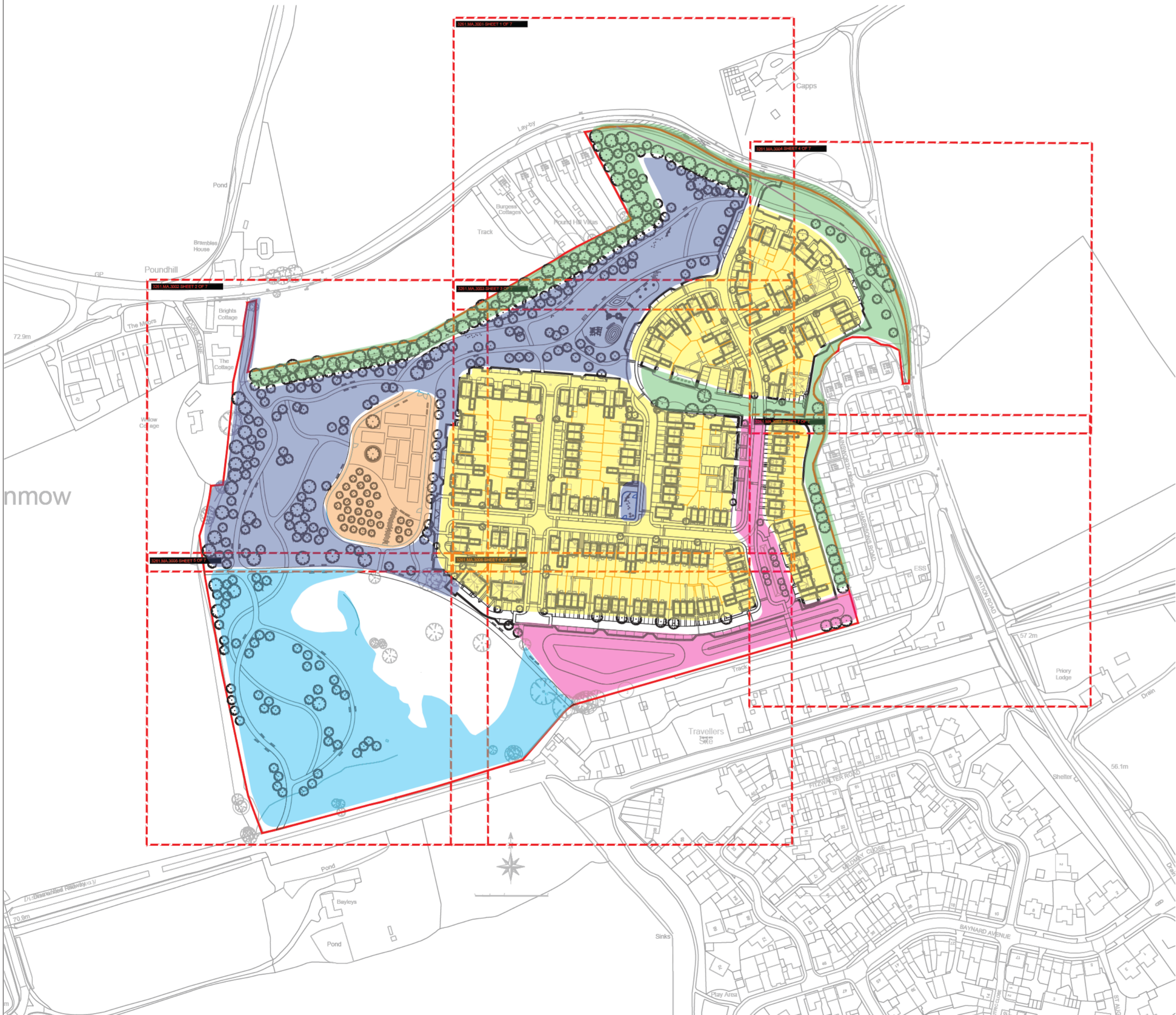
Planting should be set out in a staggered grid pattern to avoid bare areas. Contractor should allow for 10% over purchase to ensure suitable coverage is met.

Compacted soil should be ripped through before topsoiling.

Percolation tests should be carried out prior to trees and shrub planting, to ensure the soils is not prone to waterlogging.

All planting to be set out on site as directed by the project landscape architect

NOTE: TO BE READ IN CONJUNCTION WITH DRAWINGS 3261.MA.3001-3007 PLANTING PLANS AND 3261.MA.3008 PLANT SCHEDULE



A 04.10.23 HWR UPDATED LAYOUT

Rev	Date	By	Notes
A	04.10.23	HWR	UPDATED LAYOUT

Client: **DANDARA EASTERN LTD**
 Project: **MOORS FIELD UTTLESFORD**
 Title: **PLANTING STRATEGY PLAN SITE WIDE**
 Status: **FOR PLANNING**

Drawing No:	Scale:
3261.MA.3000	1:2000@A2
Drawn:	Date:
ML	JULY 2023
Checked:	AW