

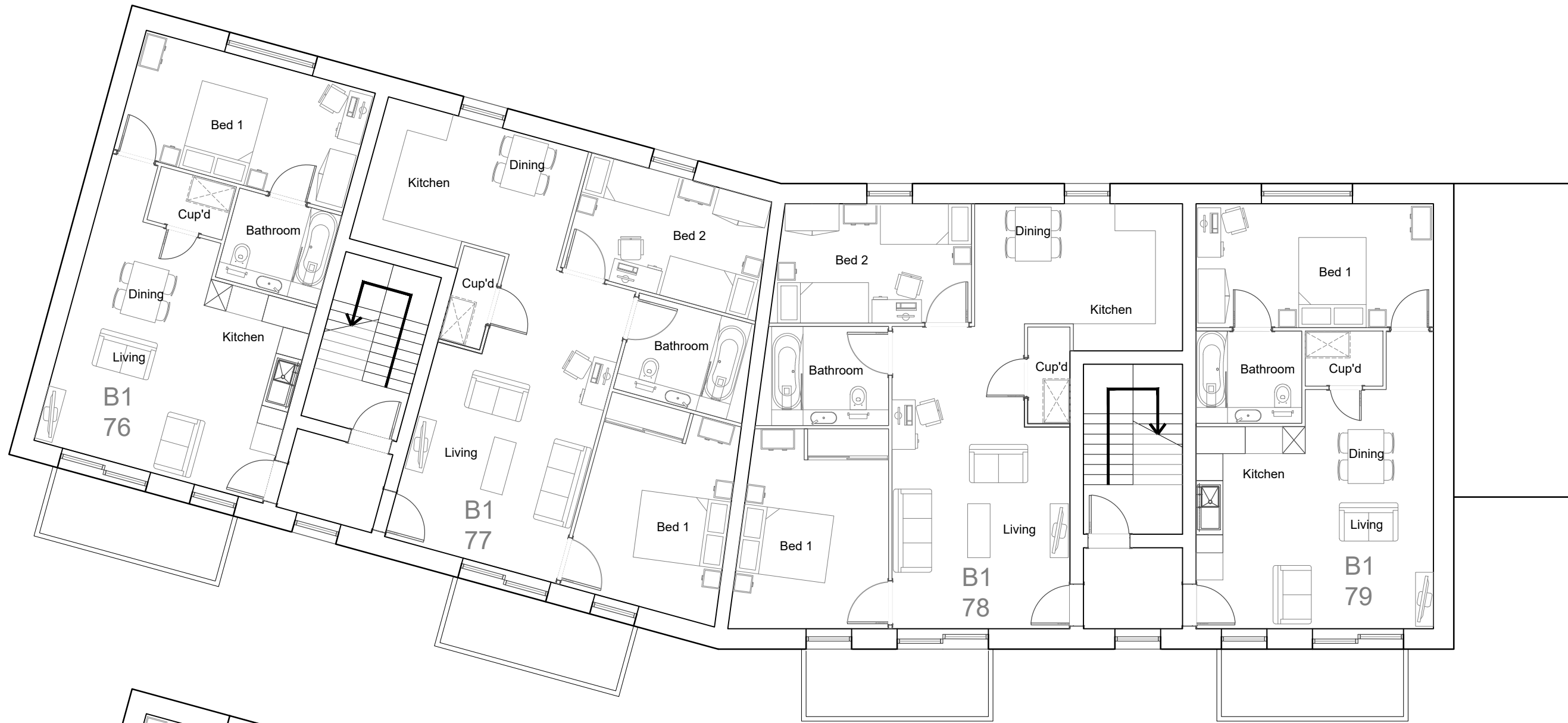
Land known as Bull Field, Warish Hall Farm Consultation Response Document

Appendix O

M4(3) Compliant Flat Layouts.



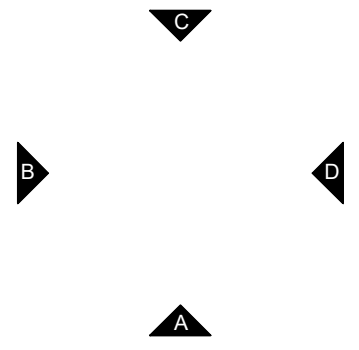
01 Proposed First Floor Plan



00 Proposed Ground Floor Plan



Key Plan
1:XXX@A2 / 1:XXXX@A4

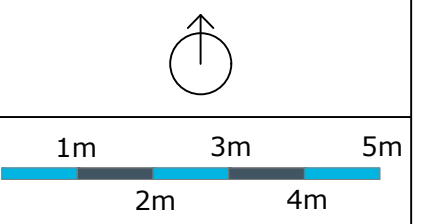


Key

Notes:

Rev

01 Minor Internal M4(3) Adaptations



PLANNING

Title
Block 1 Floor Plans with M4(3) Layouts

Site
WH202C Bull Field

Date	Drawn	Checked
June 2023	HM	PMR

Scale
1:100@A2

Drawing No.	Rev
WH202C_P_25.20	Rev A

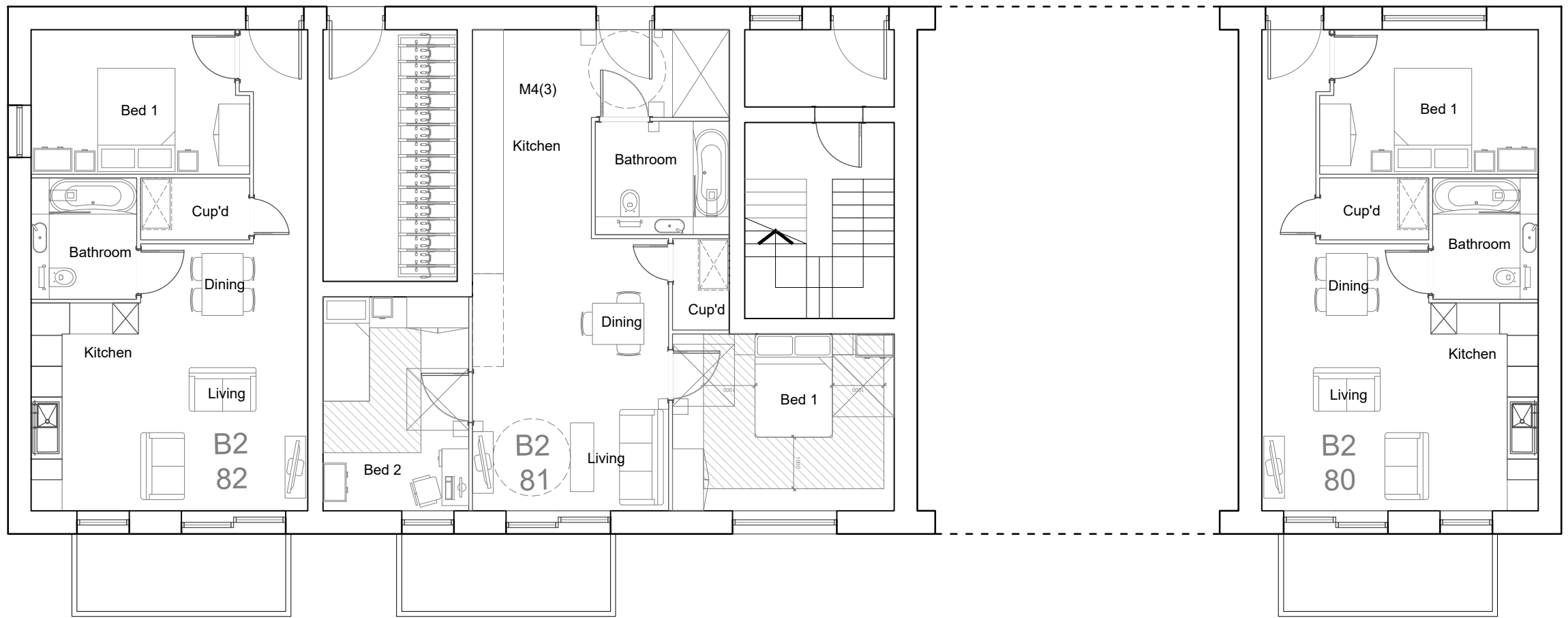
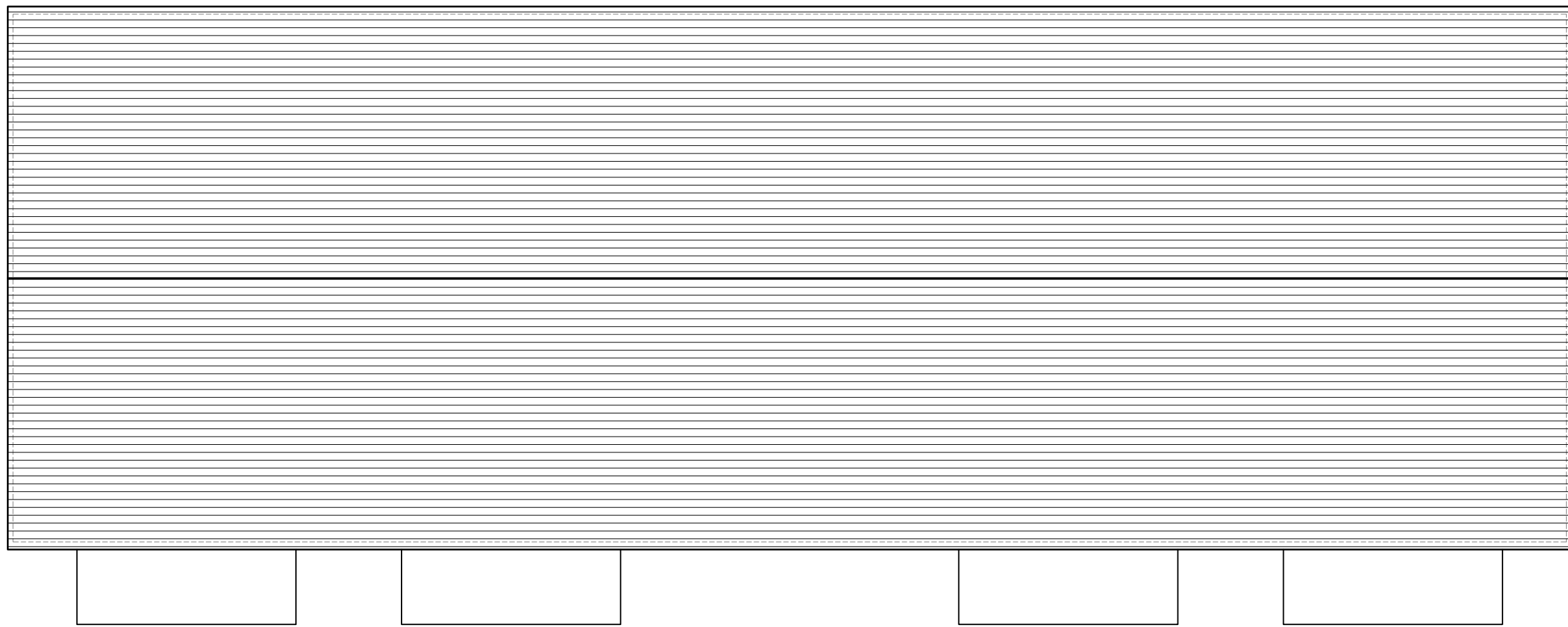


General Notes
This drawing is the property of Weston Homes Plc and is issued on the condition that it is not reproduced, disclosed or copied to any unauthorised person without written consent. Levels are in AOD unless otherwise stated. Dimensions are in millimeters unless otherwise stated. Weston Homes Plc must be informed of any drawing errors immediately in writing. This drawing is for planning purposes only.

© WESTON HOMES PLC

Head Office Weston Group Business Centre, Parsonage Road, Takeley, Essex, CM22 6PU. T: 01279 873333	London Office 10 Portman Square, London, W1H 6AZ. T: 0203 096 7238
--	---

email: info@weston-homes.com

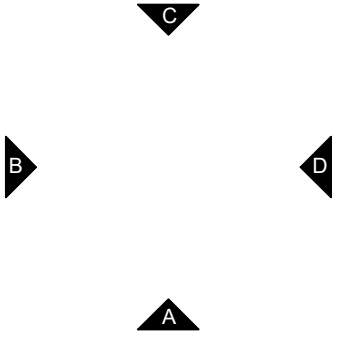


02 Proposed Roof Plan

01 Proposed First Floor Plan

00 Proposed Ground Floor Plan

Key Plan
1:XXX@A2 / 1:XXXX@A4

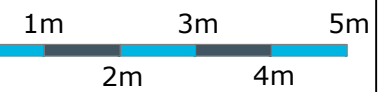


Key

Notes:

Rev

01 Minor Internal M4(3) Adaptations



PLANNING

Title
Block 2 Plans with M4(3) Layouts

Site
WH202C Bull Field

Date June 2023	Drawn HM	Checked PMR
--------------------------	--------------------	-----------------------

Scale
1:100@A2

Drawing No. WH202_P_25.22	Rev A
-------------------------------------	-----------------



General Notes
This drawing is the property of Weston Homes Plc and is issued on the condition that it is not reproduced, disclosed or copied to any unauthorised person without written consent. Levels are in AOD unless otherwise stated. Dimensions are in millimeters unless otherwise stated. Weston Homes Plc must be informed of any drawing errors immediately in writing. This drawing is for planning purposes only.

© WESTON HOMES PLC

Head Office Weston Group Business Centre, Parsonage Road, Takeley, Essex, CM22 6PU. T: 01279 873333	London Office 10 Portman Square, London, W1H 6AZ. T: 0203 096 7238
--	---

email: info@weston-homes.com