

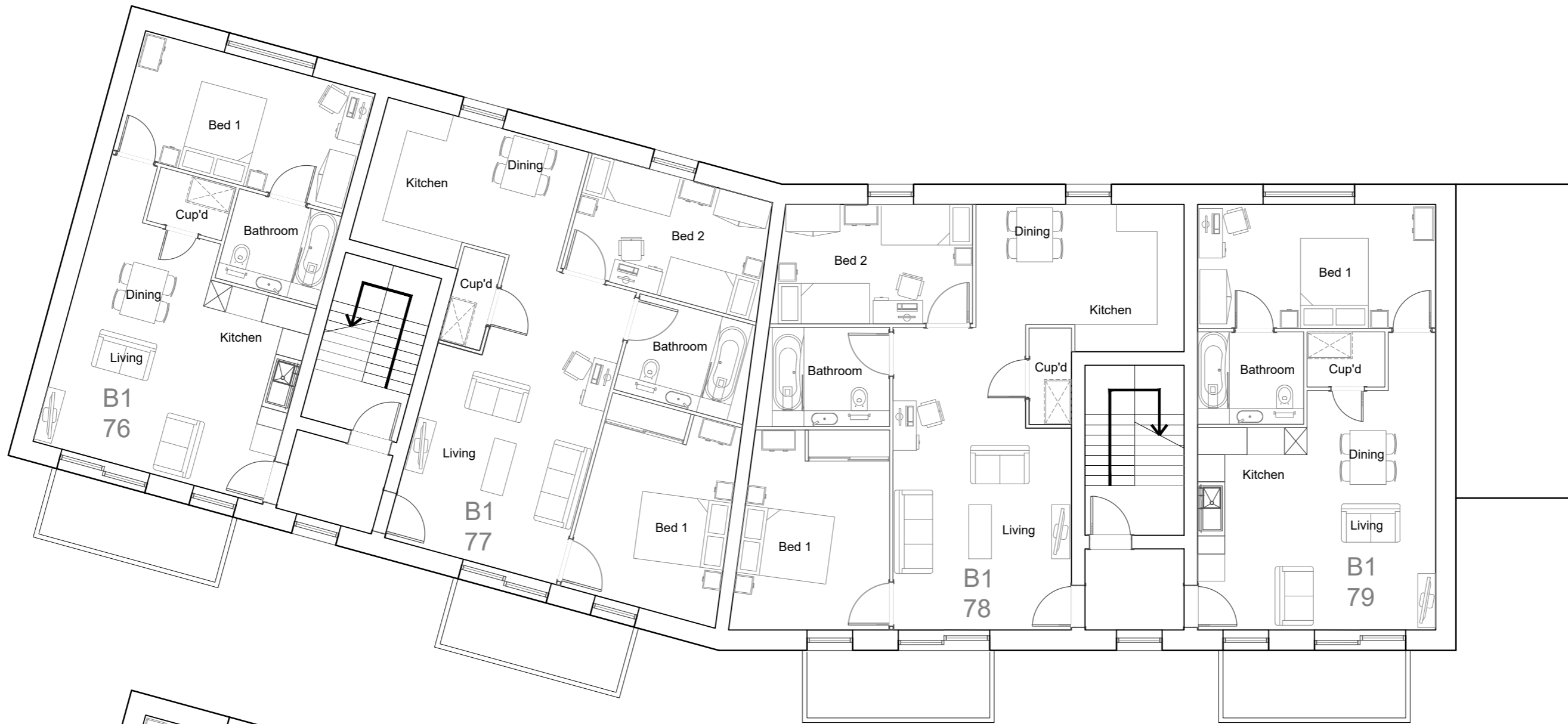
Land known as Bull Field, Warish Hall Farm Consultation Response Document

Appendix P

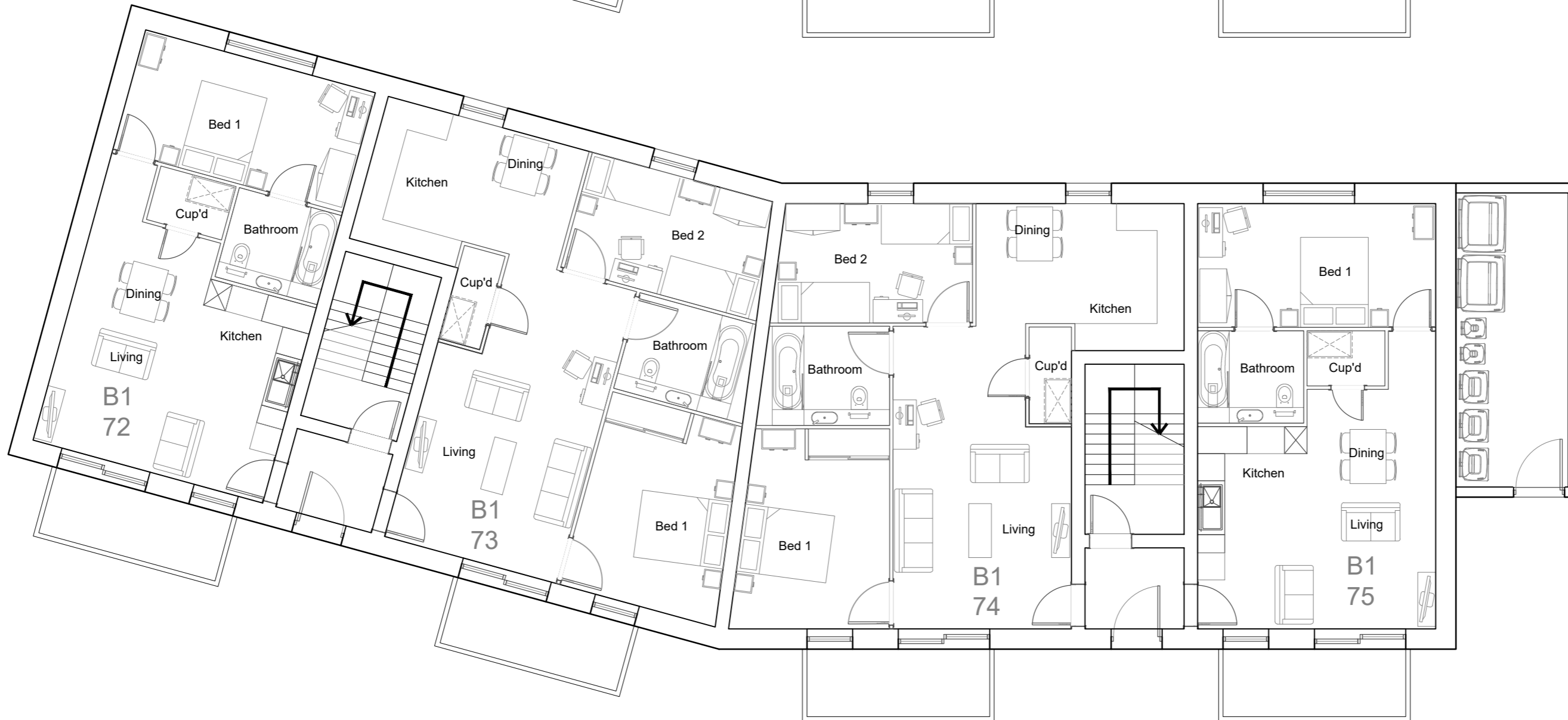
Flat Layouts to Facilitate M4(3) Units



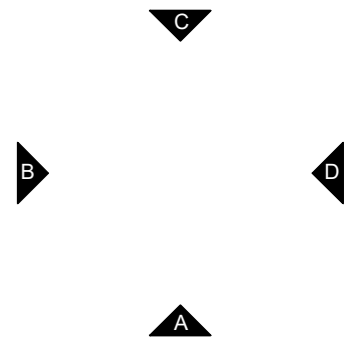
01 Proposed First Floor Plan



00 Proposed Ground Floor Plan



Key Plan
1:XXX@A2 / 1:XXXX@A4

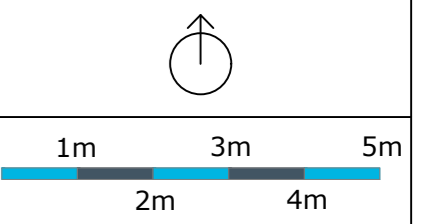


Key

Notes:

Rev

01 Minor Internal M4(3) Adaptations



PLANNING

Title

Block 1 Floor Plans

Site

WH202C Bull Field

Date

June 2023

Drawn

HM

Checked

PMR

Scale

1:100@A2

Drawing No.

WH202C_P_25.20

Rev

Rev A



General Notes

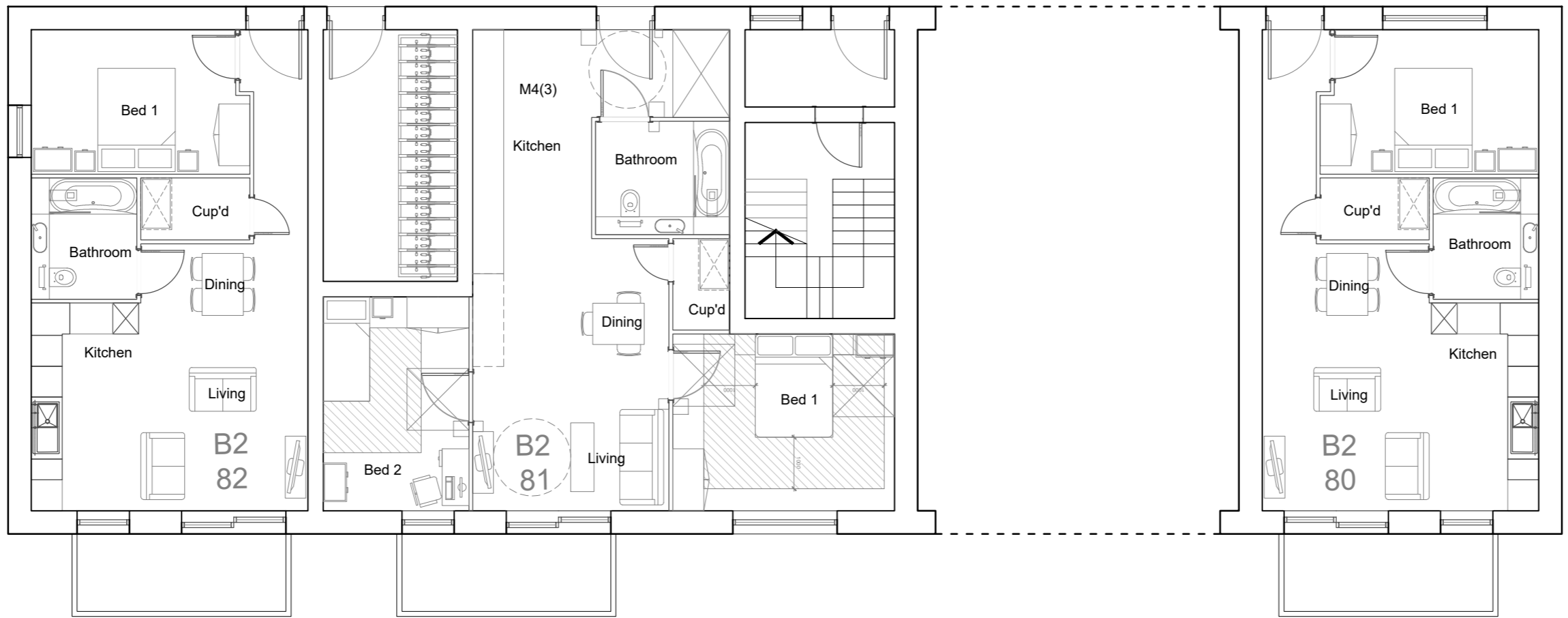
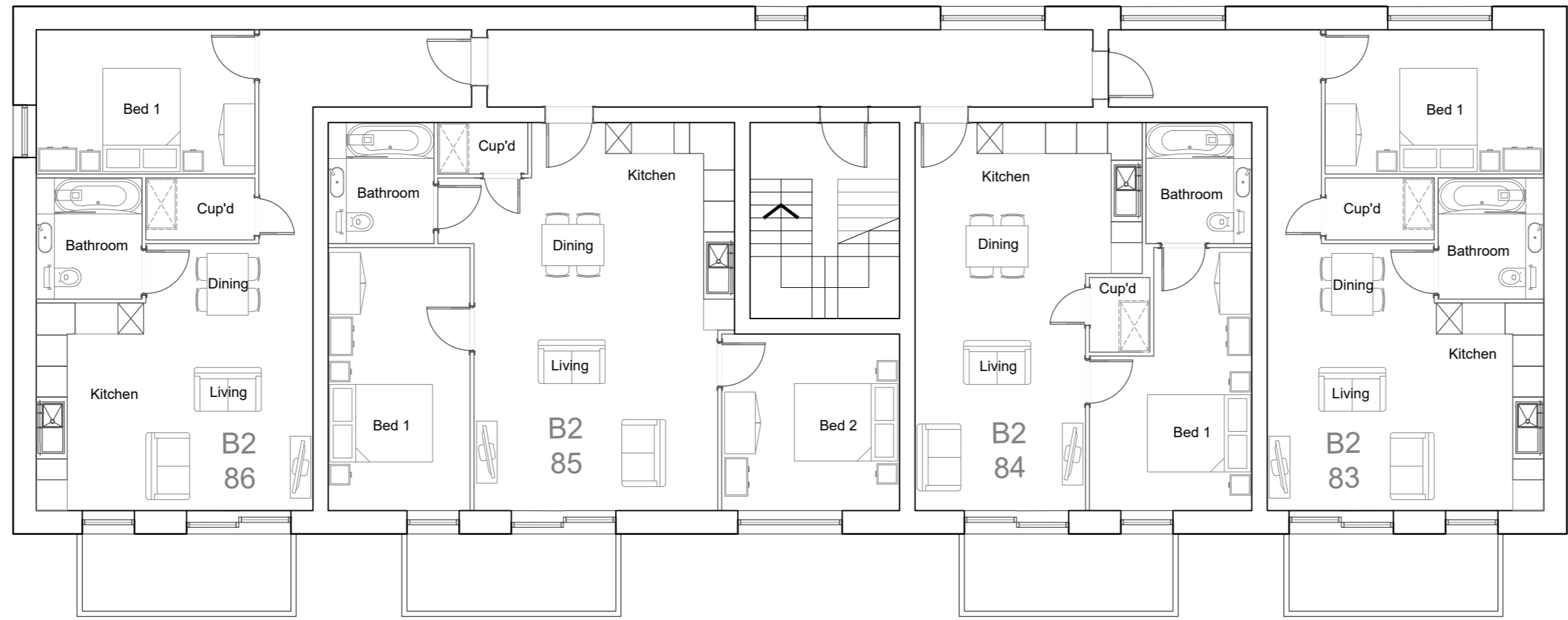
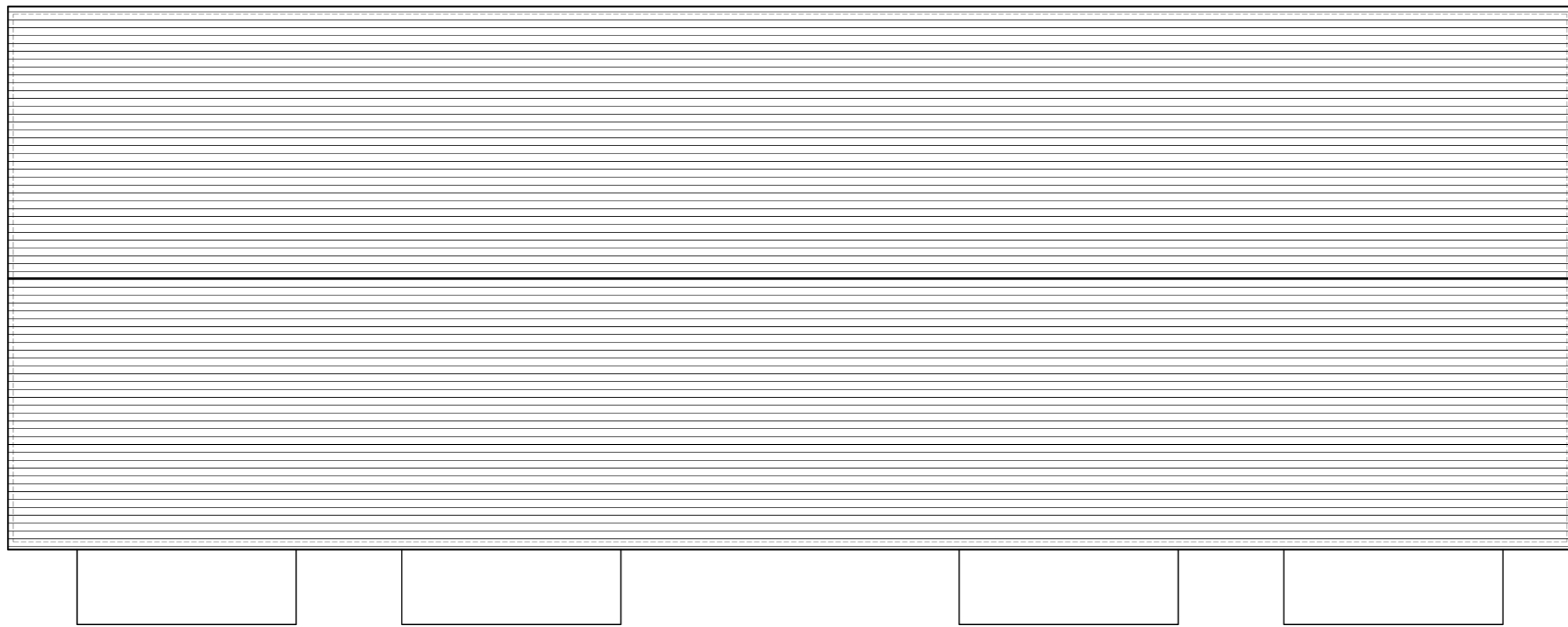
This drawing is the property of Weston Homes Plc and is issued on the condition that it is not reproduced, disclosed or copied to any unauthorised person without written consent. Levels are in AOD unless otherwise stated. Dimensions are in millimeters unless otherwise stated. Weston Homes Plc must be informed of any drawing errors immediately in writing. This drawing is for planning purposes only.

© WESTON HOMES PLC

Head Office
Weston Group Business Centre,
Parsonage Road, Takeley, Essex,
CM22 6PU.
T: 01279 873333

London Office
10 Portman Square,
London,
W1H 6AZ.
T: 0203 096 7238

info@weston-homes.com

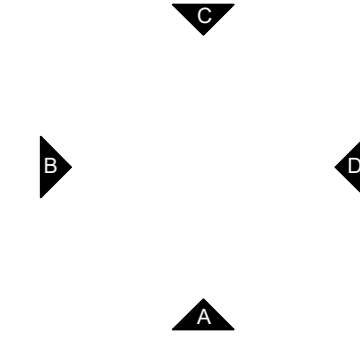


02 Proposed Roof Plan

01 Proposed First Floor Plan

00 Proposed Ground Floor Plan

Key Plan
1:XXX@A2 / 1:XXX@A4

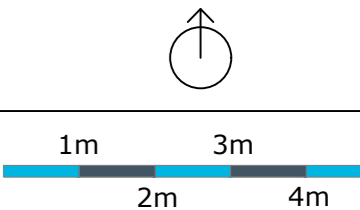


Key

Notes:

Rev

01 Minor Internal M4(3) Adaptations



PLANNING

Title

Block 2 Plans

Site

WH202C Bull Field

Date

June 2023

Drawn

HM

Checked

PMR

Scale

1:100@A2

Drawing No.

WH202_P_25.22

Rev

A



General Notes

This drawing is the property of Weston Homes Plc and is issued on the condition that it is not reproduced, disclosed or copied to any unauthorised person without written consent. Levels are in AOD unless otherwise stated. Dimensions are in millimeters unless otherwise stated. Weston Homes Plc must be informed of any drawing errors immediately in writing. This drawing is for planning purposes only.

© WESTON HOMES PLC

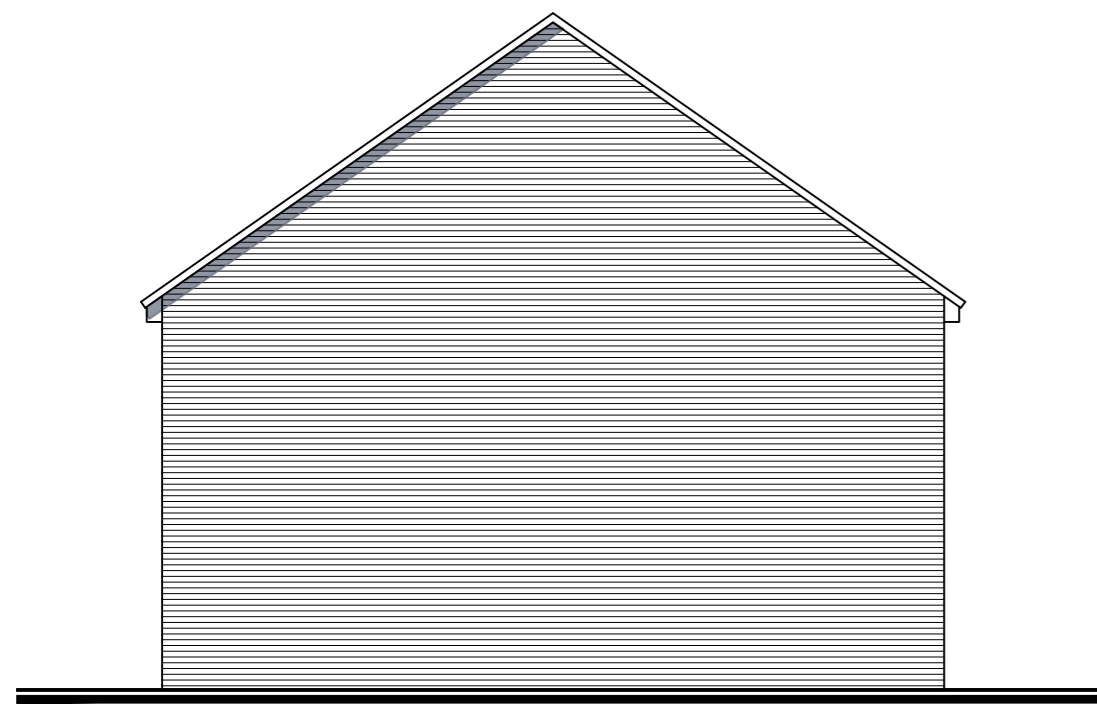
Head Office
Weston Group Business Centre,
Parsonage Road, Takeley, Essex,
CM22 6PU.
T: 01279 873333

London Office
10 Portman Square,
London,
W1H 6AZ.
T: 0203 096 7238

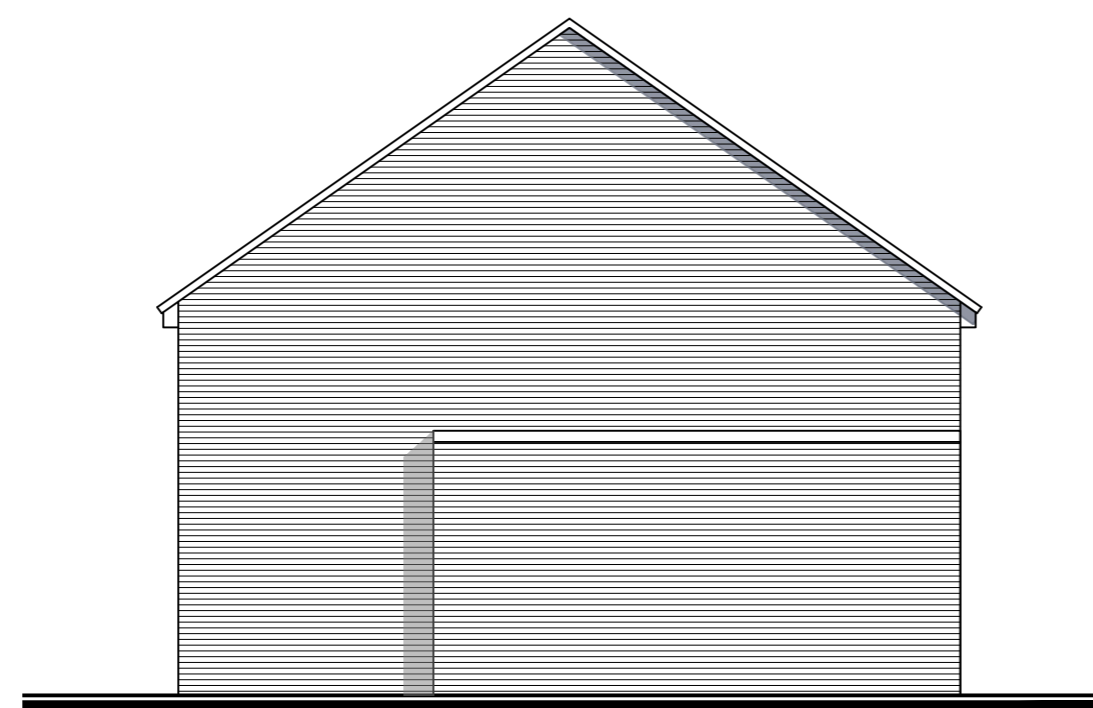
info@weston-homes.com



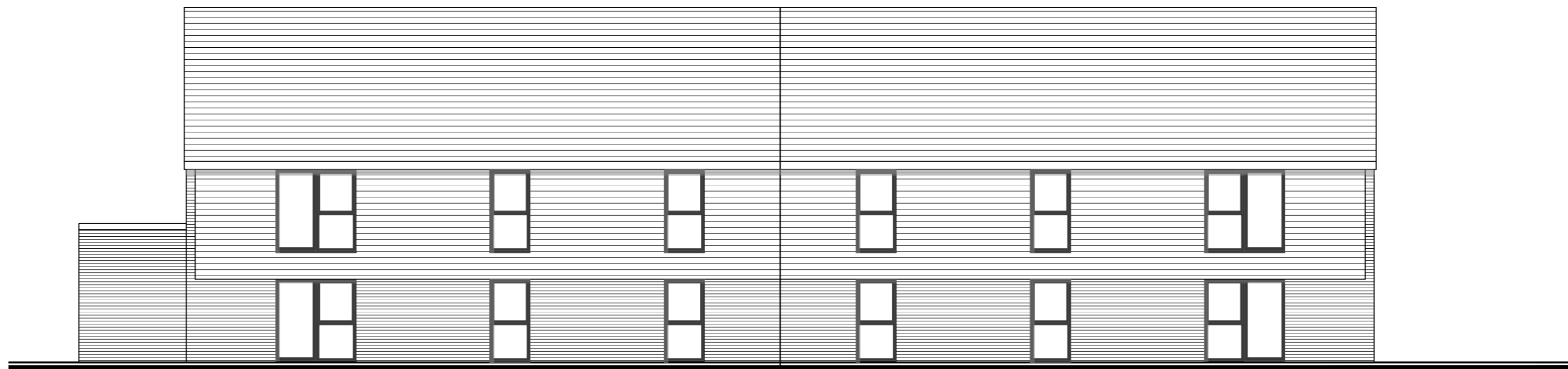
A Proposed Front Elevation



B Proposed Side Elevation

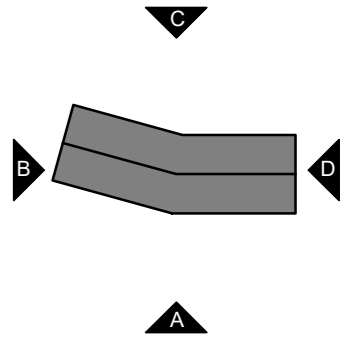


C Proposed Side Elevation



D Proposed Rear Elevation

Key Plan
1:1000@A2

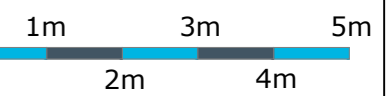


Key

Notes:

Rev

01 Minor changes to window locations



PLANNING

Title
Block 1 Elevations

Site
WH202C Bull Field

Date June 2023	Drawn HM	Checked PMR
--------------------------	--------------------	-----------------------

Scale
1:100@A2

Drawing No. WH202_P_30.20	Rev A
-------------------------------------	-----------------



General Notes
This drawing is the property of Weston Homes Plc and is issued on the condition that it is not reproduced, disclosed or copied to any unauthorised person without written consent. Levels are in AOD unless otherwise stated. Dimensions are in millimeters unless otherwise stated. Weston Homes Plc must be informed of any drawing errors immediately in writing. This drawing is for planning purposes only.

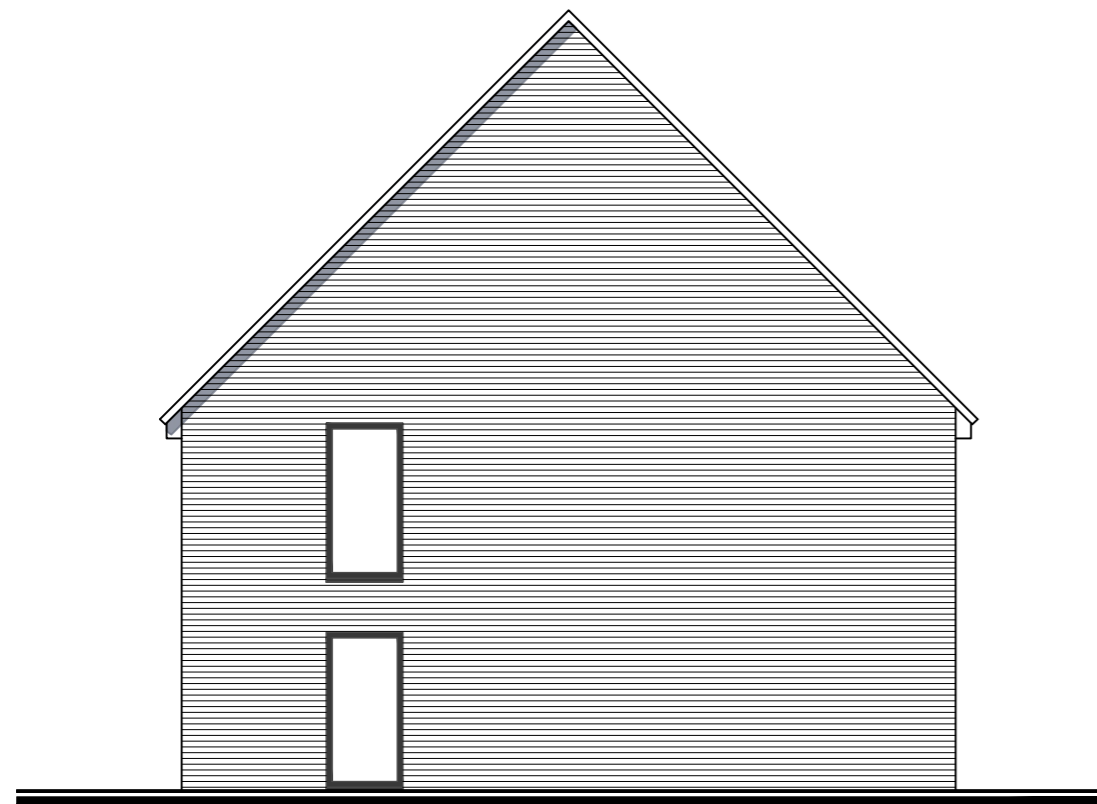
© WESTON HOMES PLC

Head Office Weston Group Business Centre, Parsonage Road, Takeley, Essex, CM22 6PU. T: 01279 873333	London Office 10 Portman Square, London, W1H 6AZ. T: 0203 096 7238
--	---

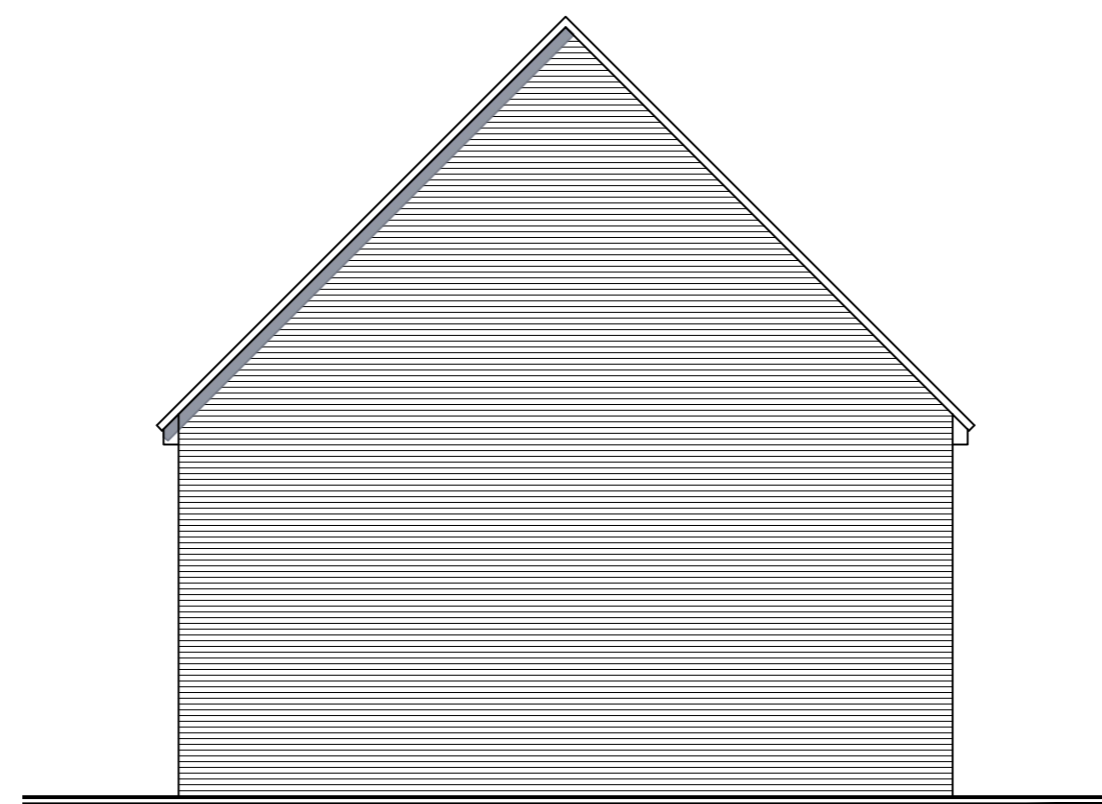
email: info@weston-homes.com



A Proposed Front Elevation



B Proposed Side Elevation

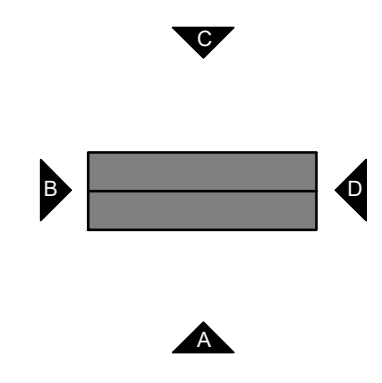


C Proposed Side Elevation



D Proposed Rear Elevation

Key Plan
1:1000@A2

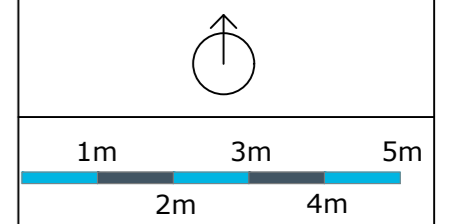


Key

Notes:

Rev

01	Minor changes to window locations
----	-----------------------------------



PLANNING

Title
Block 2 Elevations

Site
WH202C Bull Field

Date June 2023	Drawn HM	Checked PMR
--------------------------	--------------------	-----------------------

Scale
1:100@A2

Drawing No. WH202_P_30.21	Rev A
-------------------------------------	-----------------



General Notes
This drawing is the property of Weston Homes Plc and is issued on the condition that it is not reproduced, disclosed or copied to any unauthorised person without written consent. Levels are in AOD unless otherwise stated. Dimensions are in millimeters unless otherwise stated. Weston Homes Plc must be informed of any drawing errors immediately in writing. This drawing is for planning purposes only.

© WESTON HOMES PLC

Head Office Weston Group Business Centre, Parsonage Road, Takeley, Essex, CM22 6PU. T: 01279 873333	London Office 10 Portman Square, London, W1H 6AZ. T: 0203 096 7238
--	---

email: info@weston-homes.com