

Air Quality and Dust Monitoring Monthly Report – June 2023 Birmingham City Council



Department for Transport

High Speed Two (HS2) Limited has been tasked by the Department for Transport (DfT) with managing the delivery of a new national high speed rail network. It is a non-departmental public body wholly owned by the DfT.

High Speed Two (HS2) Limited,
Two Snowhill
Snow Hill Queensway
Birmingham B4 6GA

Telephone: 08081 434 434

General email enquiries: HS2enquiries@hs2.org.uk

Website: www.gov.uk/hs2

A report prepared by EWCs and MWCCs on behalf of HS2 Ltd.

High Speed Two (HS2) Limited has actively considered the needs of blind and partially sighted people in accessing this document. The text will be made available in full on the HS2 website. The text may be freely downloaded and translated by individuals or organisations for conversion into other accessible formats. If you have other needs in this regard please contact High Speed Two (HS2) Limited.

© High Speed Two (HS2) Limited, 2021, except where otherwise stated.

Copyright in the typographical arrangement rests with High Speed Two (HS2) Limited.

This information is licensed under the Open Government Licence v2.0. To view this licence, visit www.nationalarchives.gov.uk/doc/open-government-licence/version/2 **OGI** or write to the Information Policy Team, The National Archives, Kew, London TW9 4DU, or e-mail: psi@nationalarchives.gsi.gov.uk. Where we have identified any third-party copyright information you will need to obtain permission from the copyright holders concerned.



Printed in Great Britain on paper containing at least 75% recycled fibre.

Monthly Summary

1.1.1 This Summary Report is published in fulfilment of commitments detailed in the High Speed Rail (London-West Midlands) Environmental Minimum Requirements, Annex 1: Code of Construction Practice, for the nominated undertaker to present the results of air quality and dust monitoring undertaken within Birmingham City (BCC) during June 2023.

1.1.2 Figure 1 and Figure 2 in Appendix A indicate the current worksites together with the dust monitoring locations.

1.1.3 This summary should be read in conjunction with the overview monitoring report available from www.gov.uk/government/collections/monitoring-the-environmental-effects-of-hs2, which highlights: the applicable standards and guidance, as well as the air quality and dust monitoring methodologies to be implemented by nominated undertakers throughout construction.

1.1.4 The current worksites, as presented in Appendix A, Figures 1 and Figure 2, include:

Washwood Heath (Sublot 4)

- Traffic on main site haul road, including haul road maintenance with excavator, ADTs, dozer, and roller to compact;
- Site delivery area, including loading and unloading deliveries of plant and materials;
- Stockpile management area including tipping and loading of ADTs and wagons, excavators, and dozers;
- Crushing concrete to 6F5; and
- Tarmac batching plant operations, including delivery of aggregates, operating plant, and concrete wagons.

Bromford East Tunnel Portal (BETP) (Sublot 1B)

- Shuttering to pre-cast segment rings plinths and concrete;
- Striking shuttering to capping beam gantry crane plinth;
- Grading out stone and pouring concrete for phase 2;
- PBT; and
- Continue clearing materials and housekeeping.

1.1.5 Four (4) dust monitors are installed around worksites, where works are underway. These sites returned a medium dust risk rating.

1.1.6 Dust monitoring locations and results are presented in Appendix B, Table 2, together with line charts of monthly data from the dust monitors presented in Figure 3. All continuous

dust monitoring is undertaken using indicative monitors. Despite being Environment Agency (MCERTS) certified, indicative monitors carry a higher level of uncertainty than reference monitors, and therefore cannot be strictly compared with Air Quality Standards for human health and the environment. The purpose of the monitoring undertaken is to ensure the effectiveness of the on-site mitigation.

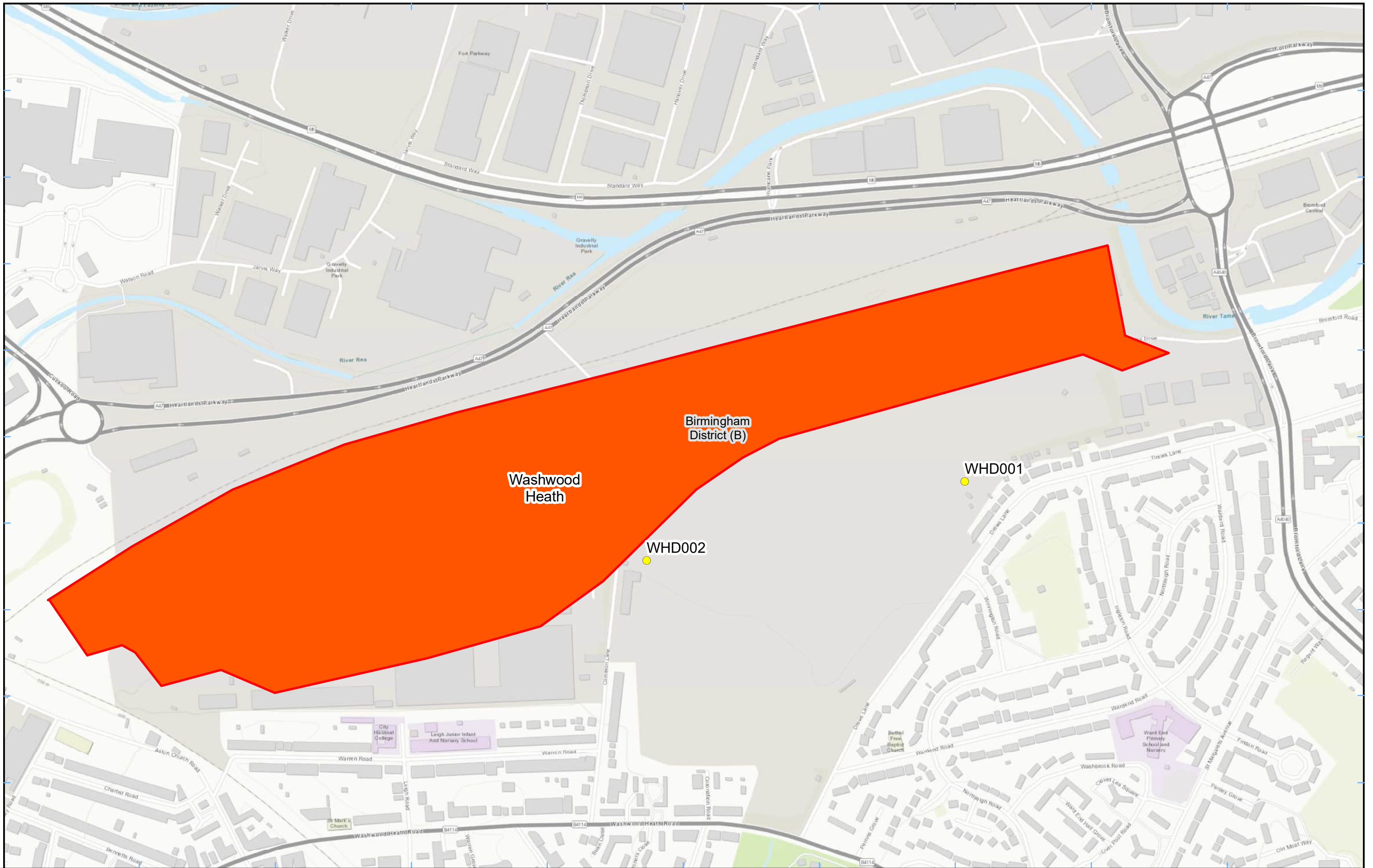
- 1.1.7 The trigger level for PM₁₀ concentrations of 190 µg/m³, over a 1-hour period, in accordance with the updated guidance document '*Guidance on Monitoring in the Vicinity of Demolition and Construction Sites - (October 2018)*' has been applied.
- 1.1.8 No (0) dust trigger alerts were recorded during this monitoring period (June 2023).
- 1.1.9 Data capture was below 90% for monitor WHD002 in June 2023 due to the monitor being removed for producing unreliable data. A full maintenance and diagnostic service was conducted on monitor at the end of the month.
- 1.1.10 Table 1 provides a summary of the complaint information relating to dust or air quality received during the reporting period, together with the findings of any related investigations.

Table 1: Summary of complaints received during June 2023

Complaint Reference No.	Worksite Reference	Description of complaint	Results of investigation
HS2-23-95568-E-C	n/a	Poor air quality - Dust.	Ongoing Small Claim due to resident requesting to be compensated due to amount of dust on private property.

Appendix A – Worksites and Monitoring Locations

Figure 1 and Figure 2: Worksites and Monitoring Locations within BCC



Legend

- Dust Monitor
- District Borough Unitary Boundaries
- Worksite

Service Layer Credits: Sources: Esri, HERE, Garmin, Intermap, increment P Corp., GEBCO, USGS, FAO, NPS, NRCAN, GeoBase, IGN, Kadaster NL, Ordnance Survey, Esri Japan, METI, Esri China (Hong Kong), (c) OpenStreetMap contributors, and the GIS User Community

Map Number

Map Name
**Worksite and Monitoring Locations
 In BCC (Sheet 1)**

Birmingham City Council

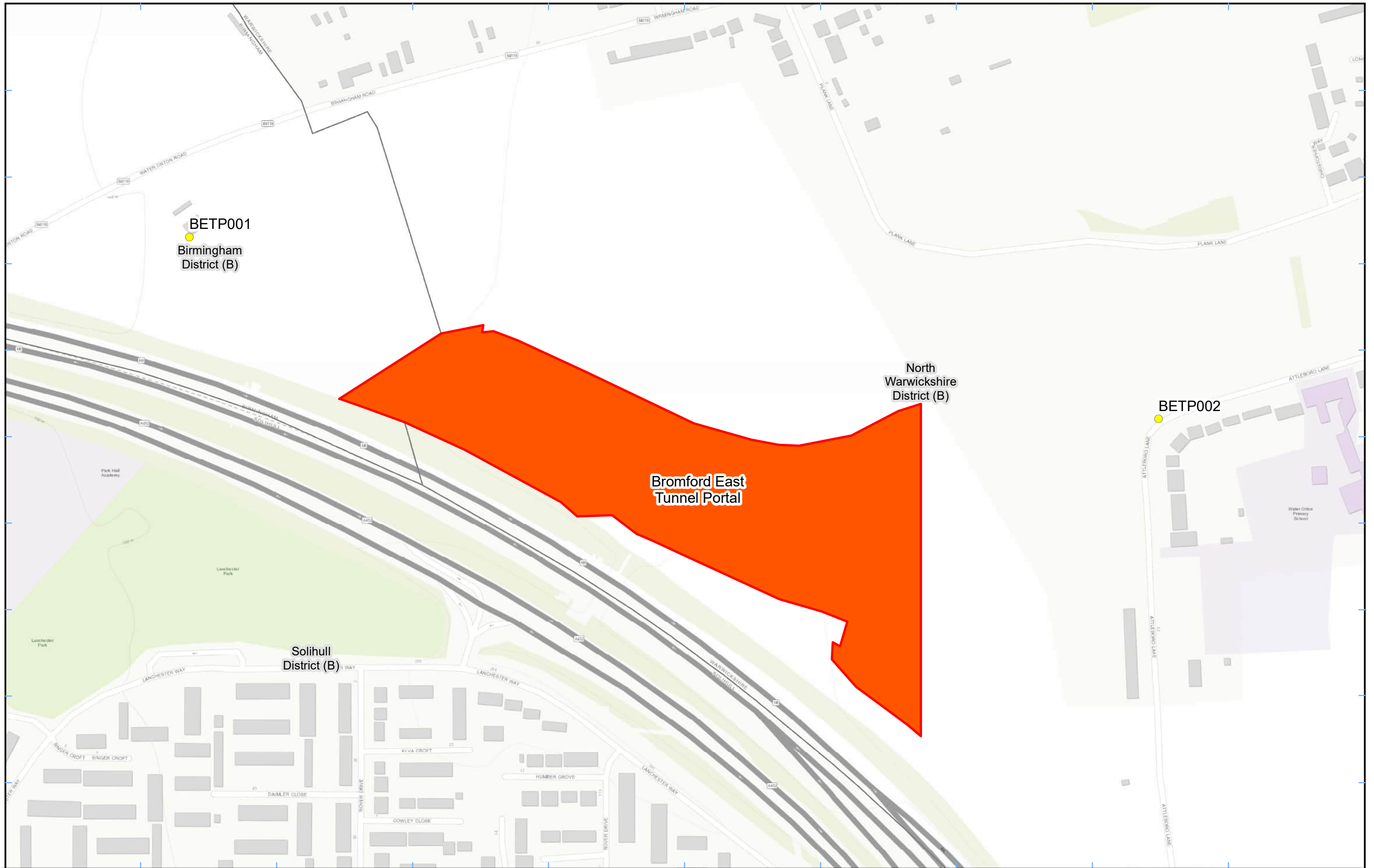
HS2 Ltd accept no responsibility for any circumstances, which arise from the reproduction of this map after alteration, amendment or abbreviation or if it is issued in part or issued incomplete in any way.

Registered in England. Registration number 06791686.
 Registered office: 2 Snowhill, Queensway,
 Birmingham B4 6GA.

Scale at A3: 1:5,000

© Crown copyright and database rights 2022.
 Ordnance Survey Licence Number 100049190.

Doc Number: Date: 23/06/22



Legend

- Dust Monitor
- District Borough Unitary Boundaries
- Worksite

Service Layer Credits: Sources: Esri, HERE, Garmin, Intermap, increment P Corp., GEBCO, USGS, FAO, NPS, NRCAN, GeoBase, IGN, Kadaster NL, Ordnance Survey, Esri Japan, METI, Esri China (Hong Kong), (c) OpenStreetMap contributors, and the GIS User Community

Map Number

Map Name
**Worksite and Monitoring Locations
 In BCC (Sheet 2)**

Birmingham City Council

hs2

HS2 Ltd accept no responsibility for any circumstances, which arise from the reproduction of this map after alteration, amendment or abbreviation or if it is issued in part or issued incomplete in any way.

Registered in England. Registration number 06791686.
 Registered office: 2 Snowhill, Queensway,
 Birmingham B4 6GA.

© Crown copyright and database rights 2022.
 Ordnance Survey Licence Number 100049190.

Scale at A3: 1:3,000

0 30 60 90 120
 Metres

Doc Number: Date: 23/06/22

Appendix B – Dust Monitoring Results

Table 2: Dust monitoring locations and June 2023 Results

Monitoring site ID	Coordinates (X,Y)	Location description	Dust risk rating for site	Monitoring site active during period	Change to site since previous period report	Mean 1-hour PM ₁₀ concentration (µg/m ³)	Minimum 1-hour PM ₁₀ concentration (µg/m ³)	Maximum 1-hour PM ₁₀ concentration (µg/m ³)	Number of 1-hour periods exceeding trigger level of 190 µg/m ³	Data capture (%)
WHD001	411221, 289245	Washwood Heath Depot, near receptors on Drews Lane	M	Yes	N	14.9	2.6	73.0	0	100.0
WHD002	410758, 289130	Washwood Heath Depot, near receptors on Common Lane	M	Yes	N	0.0	0.0	0.0	0	0.0
BETP001	416719, 290767	Bromford East Tunnel Portal, Twisted Oak Stables	M	Yes	N	2.7	0.0	29.0	0	100.0
BETP002	417406, 290605	Bromford East Tunnel Portal, Attleboro Lane	M	Yes	N	10.1	1.8	39.2	0	100.0

Figure 3: Construction dust 1-hour mean indicative PM10 concentration for all dust monitors

