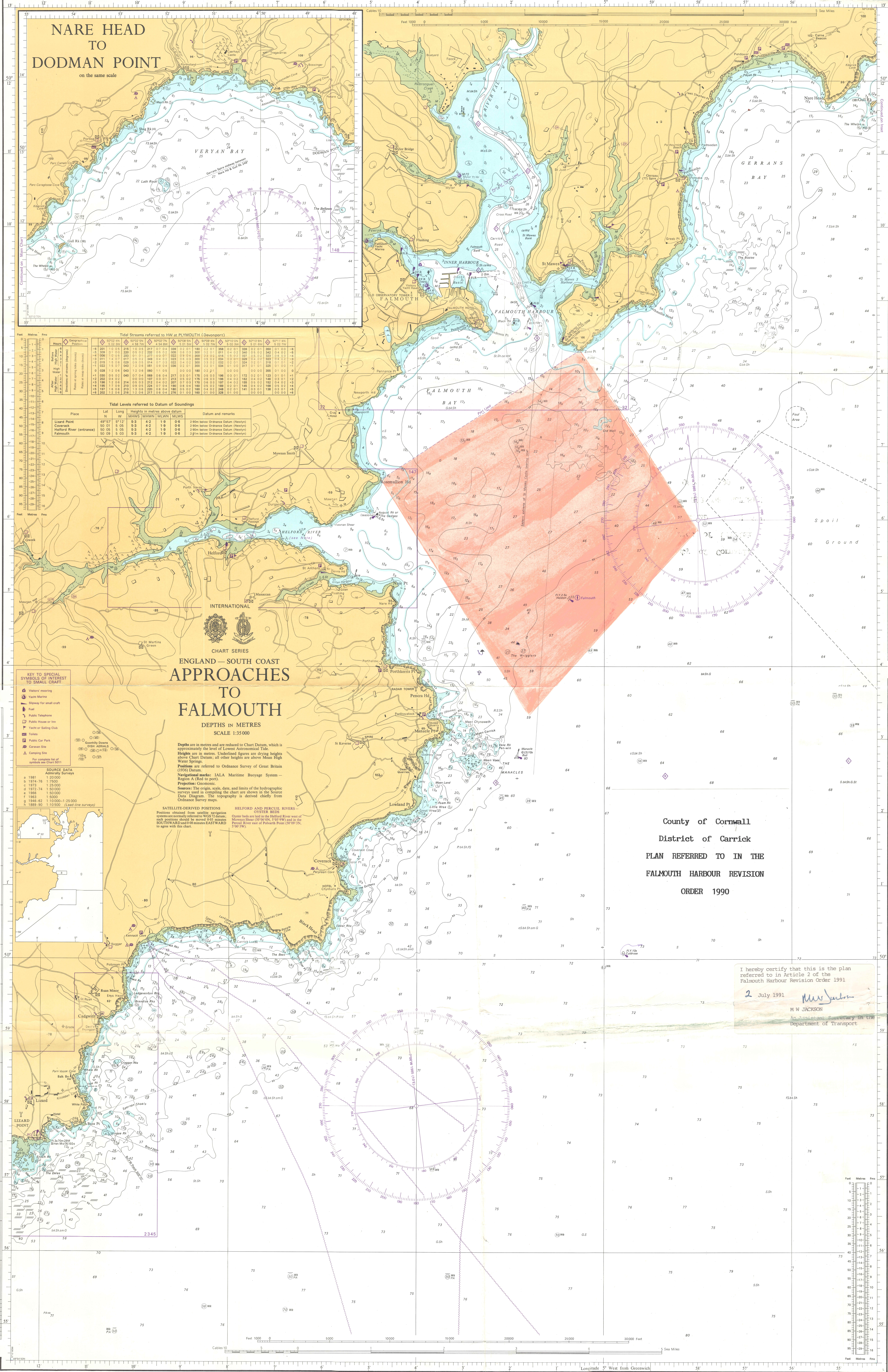
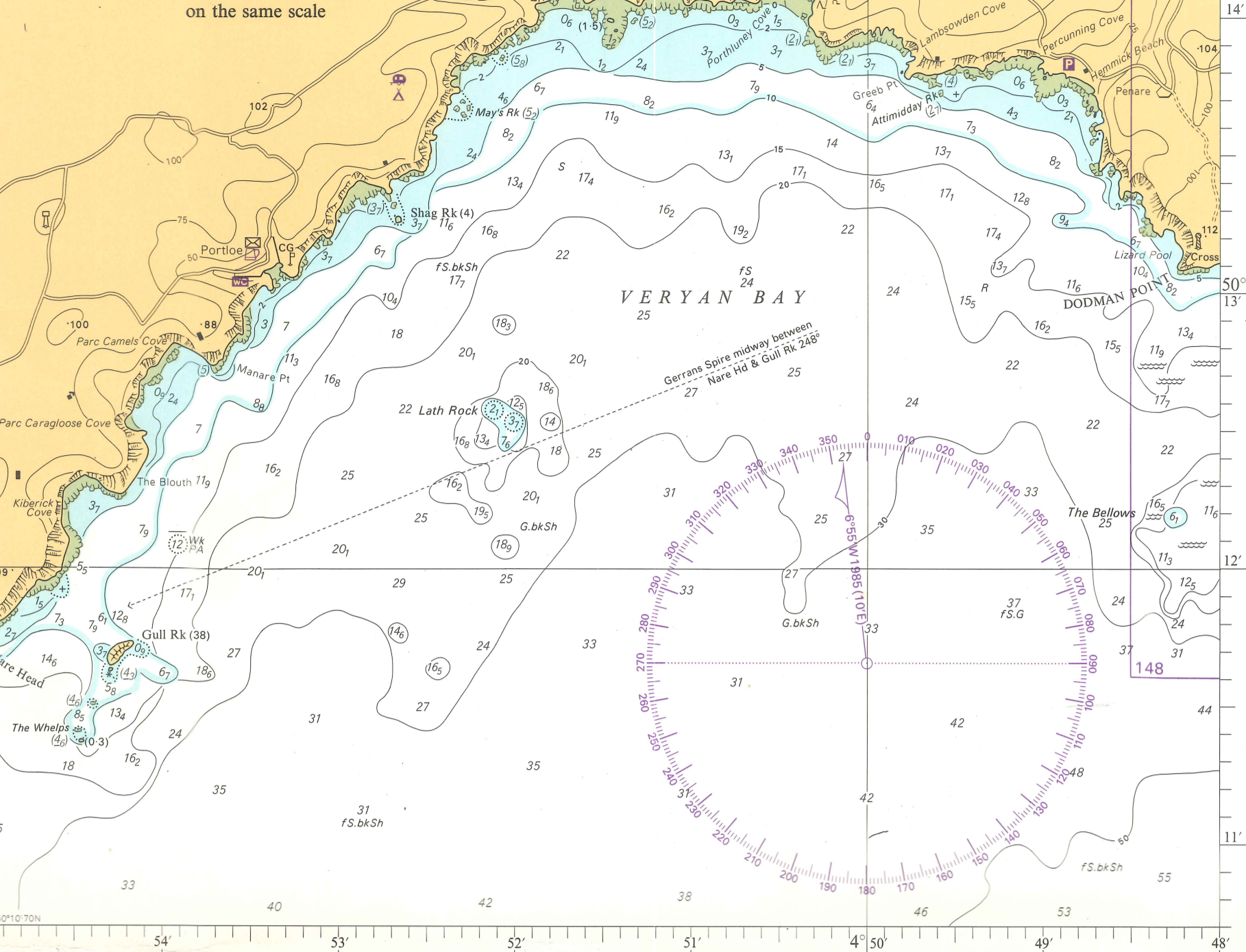


SEE RELATED ADMIRALTY PUBLICATIONS: Notices to Mariners (recent, imminent and temporary changes); Sailing Directions (local conditions, directions, regulations, port information); List of Lights; List of Places; Radio Signals (radio-aided navigation); Tidal Stream Tables; The Mariner's Handbook (general information); SOTI (symbols and abbreviations); etc. ENSURE CHARTS AND PUBLICATIONS ARE KEPT CORRECTED.



NARE HEAD TO DODMAN POINT

on the same scale



Tidal Streams referred to HW at PLYMOUTH (Ovevport)

Hour	Direction	Force
0000	000	0.0
0100	005	0.1
0200	010	0.2
0300	015	0.3
0400	020	0.4
0500	025	0.5
0600	030	0.6
0700	035	0.7
0800	040	0.8
0900	045	0.9
1000	050	1.0
1100	055	1.1
1200	060	1.2
1300	065	1.3
1400	070	1.4
1500	075	1.5
1600	080	1.6
1700	085	1.7
1800	090	1.8
1900	095	1.9
2000	100	2.0
2100	105	2.1
2200	110	2.2
2300	115	2.3
2400	120	2.4
0100	125	2.5
0200	130	2.6
0300	135	2.7
0400	140	2.8
0500	145	2.9
0600	150	3.0
0700	155	3.1
0800	160	3.2
0900	165	3.3
1000	170	3.4
1100	175	3.5
1200	180	3.6
1300	185	3.7
1400	190	3.8
1500	195	3.9
1600	200	4.0
1700	205	4.1
1800	210	4.2
1900	215	4.3
2000	220	4.4
2100	225	4.5
2200	230	4.6
2300	235	4.7
2400	240	4.8
0100	245	4.9
0200	250	5.0
0300	255	5.1
0400	260	5.2
0500	265	5.3
0600	270	5.4
0700	275	5.5
0800	280	5.6
0900	285	5.7
1000	290	5.8
1100	295	5.9
1200	300	6.0
1300	305	6.1
1400	310	6.2
1500	315	6.3
1600	320	6.4
1700	325	6.5
1800	330	6.6
1900	335	6.7
2000	340	6.8
2100	345	6.9
2200	350	7.0
2300	355	7.1
2400	360	7.2
0100	365	7.3
0200	370	7.4
0300	375	7.5
0400	380	7.6
0500	385	7.7
0600	390	7.8
0700	395	7.9
0800	400	8.0
0900	405	8.1
1000	410	8.2
1100	415	8.3
1200	420	8.4
1300	425	8.5
1400	430	8.6
1500	435	8.7
1600	440	8.8
1700	445	8.9
1800	450	9.0
1900	455	9.1
2000	460	9.2
2100	465	9.3
2200	470	9.4
2300	475	9.5
2400	480	9.6
0100	485	9.7
0200	490	9.8
0300	495	9.9
0400	500	10.0

Tidal Levels referred to Datum of Soundings

Place	Lat	Long	Heights in metres above datum	Datum and remarks
Lizard Point	49° 57' 51.12"	5° 3' 4.2"	1.9	2.90m below Ordnance Datum (Mean)
Coverack	50° 01' 5.05"	5° 3' 4.2"	1.9	2.90m below Ordnance Datum (Mean)
Helford River (entrance)	50° 05' 5.05"	5° 3' 4.2"	1.9	2.90m below Ordnance Datum (Mean)
Falmouth	50° 08' 5.03"	5° 3' 4.2"	1.9	2.71m below Ordnance Datum (Mean)

ENGLAND—SOUTH COAST APPROACHES TO FALMOUTH

DEPTHS IN METRES
SCALE 1:35 000

Depths are in metres and are reduced to Chart Datum, which is approximately the level of Lowest Astronomical Tide. Heights are in metres. Underlined figures are drying heights above Chart Datum; all other heights are above Mean High Water Springs. Positions are referred to Ordnance Survey of Great Britain (1956) Datum. Navigational marks: IALA Maritime Buoyage System—Buoyage A (Red to port). Projection: Gnomonic. Sources: The origin, scale, date, and limits of the hydrographic surveys used in compiling the chart are shown in the Source Data Diagram. The topography is derived chiefly from Ordnance Survey maps. SATellite-Derived Positions: Positions obtained from satellite navigation systems are normally referred to WGS 84 datum; such positions should be moved 0.67 metres SOUTHWARD and 0.6 metres EASTWARD to agree with this chart. HELFORD AND PERCIVAL RIVERS OYSTER BEDS: Oyster beds are laid in the Helford River west of Mowena Shoar (SP 06 0N, 5° 08' 30" W) and in the Percival River east of Percival Point (SP 07 3N, 5° 00' 30" W).

County of Cornwall
District of Carrick
PLAN REFERRED TO IN THE
FALMOUTH HARBOUR REVISION
ORDER 1990

I hereby certify that this is the plan referred to in Article 2 of the Falmouth Harbour Revision Order 1991
2 July 1991
M W JACKSON
Secretary to the Department of Transport