

HS2

May 2023

Air Quality and Dust Monitoring Monthly Report – May 2023 **Buckinghamshire** Council



Department for Transport

High Speed Two (HS2) Limited has been tasked by the Department for Transport (DfT) with managing the delivery of a new national high speed rail network. It is a non-departmental public body wholly owned by the DfT.

High Speed Two (HS2) Limited,
Two Snowhill
Snow Hill Queensway
Birmingham B4 6GA

Telephone: 08081 434 434

General email enquiries: HS2enquiries@hs2.org.uk

Website: www.gov.uk/hs2

A report prepared by EWCs and MWCCs on behalf of HS2 Ltd.

High Speed Two (HS2) Limited has actively considered the needs of blind and partially sighted people in accessing this document. The text will be made available in full on the HS2 website. The text may be freely downloaded and translated by individuals or organisations for conversion into other accessible formats. If you have other needs in this regard please contact High Speed Two (HS2) Limited.

© High Speed Two (HS2) Limited, 2021, except where otherwise stated.

Copyright in the typographical arrangement rests with High Speed Two (HS2) Limited.

This information is licensed under the Open Government Licence v2.0. To view this licence, visit www.nationalarchives.gov.uk/doc/open-government-licence/version/2 **OGI** or write to the Information Policy Team, The National Archives, Kew, London TW9 4DU, or e-mail: psi@nationalarchives.gsi.gov.uk. Where we have identified any third-party copyright information you will need to obtain permission from the copyright holders concerned.



Printed in Great Britain on paper containing at least 75% recycled fibre.

Monthly Summary

- 1.1.1 This Summary Report is published in fulfilment of commitments detailed in the High-Speed Rail (London-West Midlands) Environmental Minimum Requirements, Annex 1: Code of Construction Practice, for the nominated undertaker to present the results of dust monitoring undertaken in the Buckinghamshire Council (BC) during May 2023.
- 1.1.2 Figures 1-7 in Appendix A present the current worksites together with the dust monitoring locations for May 2023.
- 1.1.3 This summary should be read in conjunction with the overview monitoring report available from www.gov.uk/government/collections/monitoring-the-environmental-effects-of-hs2, which highlights the applicable standards and guidance, as well as the air quality and dust monitoring methodologies to be implemented by nominated undertakers throughout construction.
- 1.1.4 The current worksites, as presented in Appendix A, Figures 1-7, include:

CVV LTP1 worksite

- North Embankment Compound: compound operation;
- DWSC Compound: compound operation;
- Haul Road and Jetty Maintenance – River Colne to GUC: operation and maintenance;
- Ground Investigation Works: GI works;
- Pier Construction: arch form deck – FRC works for pile cap and pier, standard piers FRC works for pile cap and pier, post-tensioning of AFD legs and tower crane mob / demob;
- ATFS: site preparation, bulk earthworks fill, permanent drainage;
- Pumping water management;
- Satellite welfare;
- Generator farms;
- Core Drilling of Concrete;
- Pile Trimming;
- A412 Gas Crossing Emergency Dismantling;
- Fencing;
- Environmental Maintenance;
- Cofferdam Excavation: cofferdam excavation, dewatering, waling beams and concrete plugs;
- River Colne Crossing: Emergency removal of obstruction to RC Crossing;
- Launching Girder and Deck Works: Span segmental erection with launching gantry, shoring steel structure erection and dismantling, internal post-tensioning (PT) and grouting and external PT;
- Deck Finishes Logistics: preparation and operation of storage yards and installation of below deck access provision, traffic management on the deck surface, installation of parapets, noise barriers, troughs, pipes, steel works and other minor material to the

storage yards and deck, installation of accesses top of the deck (HAKI stairs) and foundation works in the north embankment, deck finishes support plan;

- Deck Finishes – On-deck Construction: construction of robust kerbs, installation of parapets, construction of concrete stitch and filling of voids and top openings;
- Deck Finishes – In-deck Construction: diaphragm walls and concrete works within the deck, drainage works within the deck and steel works within the deck; and
- Landscaping: advanced Works including removal of cofferdams, early earthworks including ground profiling and cut, Initial ground drainage including manhole chamber and early soil (subsoil and topsoil) placement.

Chalfont St Peter Vent Shaft

- General Site Activities;
- Road Maintenance Works;
- Connection to Tunnels: concrete floors; and
- Basement Construction: headhouse concrete works.

Amersham Vent Shaft

- General Site Activities;
- Internal Structure: concrete walls and floors;
- Tunnel Connections; and
- Basement Construction: headhouse basement internals and demolition of D-wall.

Chalfont St Giles Vent Shaft

- General Site Activities;
- Road Maintenance Works;
- Connections to Tunnels: concrete floors; and
- Basement Construction: excavate to formations and basement internals & headhouse concrete works;

Little Missenden Vent Shaft

- General site activity;
- Internal Structures; remaining walls and slabs; and
- Small basement construction; headhouse basement internals.

Chesham Road Vent Shaft

- General site activity: general compound;
- Internal Structure: walls, slabs and staircases, and
- Ground Level Works: headhouse ATS concrete works.

North Portal work site

- Access Road: drainage and services, scrape formation, hardstanding and kerbing, asphalt and signage;
- Piling Platform Area 1: traffic management and temporary access from Firth Hill Road;
- North Portal Compound: general plant;
- North Portal Road: general plant;
- North-Portal Tracks Platform: scraping / hardstanding / surfacing / services / drainage;
- Piling Platform Removal: dismantling related to areas D., D.2 piling platforms;
- Headwall Capping-Beam and Excavation: excavation / RC works/ temporary propping;
- Portal Drainage: excavation / drainage installation / backfilling; and
- Porous Portal Structure: RC works and concrete pours.

North Chilterns Area

South Heath:

- No works were carried out in this area.

Potters Row:

- New compound installation;
- Stockpile movement.

Hunts Green:

- No works carried out for this period.

Grimms Ditch:

- No works carried out for this period.

Chesham Lane:

- Stockpile Movement.

Wendover Bus 55:

- Stockpile Movement.

Ellesborough Road:

- Steel fixing, shuttering and pouring to the Ellesborough Road Bridge Western Ballast wall;
- Drainage installation and embankment construction to the Ellesborough Road diversion;

- Kerbing at Ellesborough Road; and
- Pour of bases and Installation of L walls at the Ellesborough Road Diversion.

Nash Lee Road:

- Site Maintenance;
- Mass Haul for SMSE further North;
- Excavation and Replace earthworks at Risborough Road and Risborough Bridge.

Nash Lee Lane:

- Tie-in works for the new diversion, grass cutting, fencing and signage, lining.

Bacombe Lane:

- Construction of Bacombe Lane Temporary offline road;
- Plant Crossing - Topsoil strip

Small Dean Viaduct:

- Ground investigation works;
- De stumping and enablement works for utility diversion;
- Excavation, and pipe install for the utility diversion;
- Grouting and piling;
- Security area access improvement and Bus stop extension;
- Site resident hoarding;
- Surface water management; and
- Platform and haul road building.

Wendover Town:

- Pour of concrete wall in the batching plant;
- Stripping of Topsoil/subsoil for the Wendover Green Tunnel Construction of Slurry Wall welding area; and
- Cable jointing and pulling.

Grove Farm:

- Temporary Surface Water management;
- V-Ditch works; and
- Installation of Boreholes.

Calvert Area

Station Road:

- Vegetation clearance works along Station Road.

Woodlands Farm:

- River Ray Culvert – construction of headwalls and waterproofing
- Adams Accommodation Underbridge – no works
- Woodlands Culvert – waterproofing and technical backfill
- Mass haulage of aggregate
- Edgcott Road Overbridge – no works

FCC / School Hill:

- Secant Retaining Wall – works paused
- Mass haulage of aggregate
- Shepherds Furze Culvert – dig and replace (D&R) under structure and installation of pre-cast concrete units.
- School Hill Batching Plant – production of concrete

Other works:

- EWR Culvert
- Charndon Lodge Pumping Station
- Charndon Lodge Underbridge
- East West Rail Overbridge
- IMD West Culvert
- IMD East Culvert
- Addison Road Overbridge
- Addison Road permanent highway diversion
- SCL/08 Overbridge
- West Street utility diversions
- SGN pipeline diversion
- Gawcott Road temporary highway diversion
- Perry Hill Overbridge
- Portway Culvert
- OXD / EWR Line Earthworks
- Calvert Cutting Earthworks
- IMD Earthworks
- Sheephouse Wood North Culvert
- Megaditch sheet piling (for CAG2 and Greatmoor No. 4 culvert excavation)
- Greatmoor No. 3 culvert
- GUN28 Overbridge

- Doddershall No. 6 culvert
- Doddershall No. 7 culvert

Twyford to Greatworth

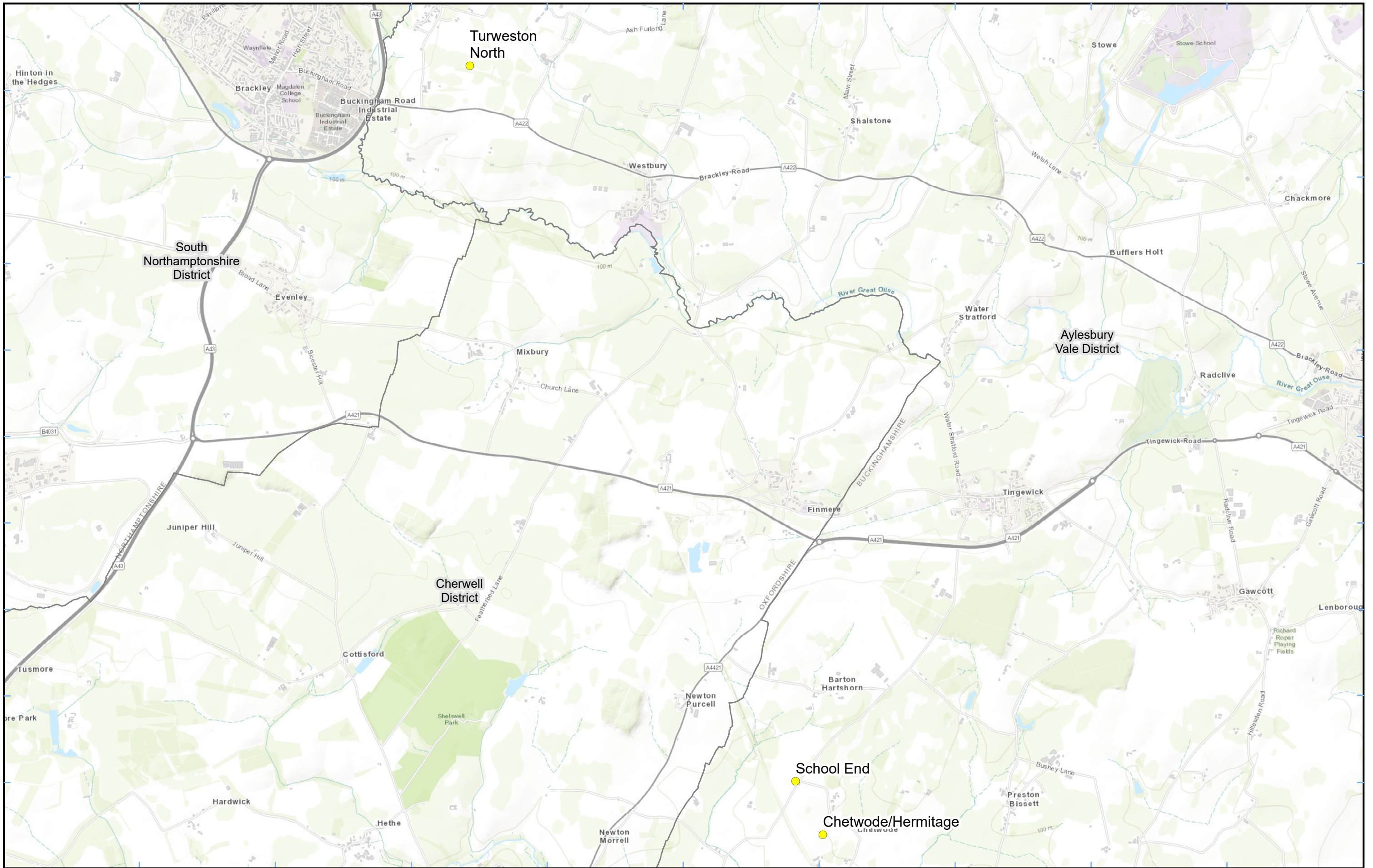
Turweston North:

- Slab protection
- Steel Fixing
- Road Diversion
- Haul Road Maintenance
- 1A1 deliveries

- 1.1.5 Thirty-seven (37) dust monitors are installed around the worksites, where works are underway. These sites returned a medium dust risk rating.
- 1.1.6 Dust monitoring locations and results for May 2023 are presented in Appendix B, Table 1, together with a line chart of monthly data from each dust monitor presented in Figure 8. All continuous dust monitoring is undertaken using indicative monitors. Despite being Environment Agency (MCERTS) certified, indicative monitors carry a higher level of uncertainty than reference monitors, and therefore cannot be strictly compared with Air Quality Standards for human health and the environment. The purpose of the monitoring undertaken is to ensure the effectiveness of the on-site mitigation.
- 1.1.7 The trigger level for PM₁₀ concentrations of 190 µg/m³, measured as a 1-hour mean, in accordance with the updated guidance document '*Guidance on Monitoring in the Vicinity of Demolition and Construction Sites – (December 2018)*' has been applied.
- 1.1.8 Data capture was below 90% for multiple monitors due to technical issues and/or loss of power due to insufficient sunlight/wind for monitors using solar/wind power. No data was recorded for South Heath, Station Road, Glebe House and Hunts Green for the month of May 2023, due to the monitors being retrieved from site. Low data capture for Grimms Ditch, FCC, Chetwode Hermitage, Meadoway and School End were due to the monitors being reinstalled.
- 1.1.9 Details of the trigger alert investigations and remediations are presented in Appendix B, Table 2.
- 1.1.10 No (0) complaints were received during the monitoring period (May 2023).

Appendix A – Worksite and Dust Monitoring Locations

Figures 1-7: Worksite and Monitoring locations within BC



Legend
 Dust Monitor
 District Borough Unitary Boundaries

Service Layer Credits: Sources: Esri, HERE, Garmin, Intermap, increment P Corp., GEBCO, USGS, FAO, NPS, NRCAN, GeoBase, IGN, Kadaster NL, Ordnance Survey, Esri Japan, METI, Esri China (Hong Kong), (c) OpenStreetMap contributors, and the GIS User Community

Map Number
 Map Name
**Monitoring Locations
 In BC (Sheet 1)**
 Buckinghamshire County

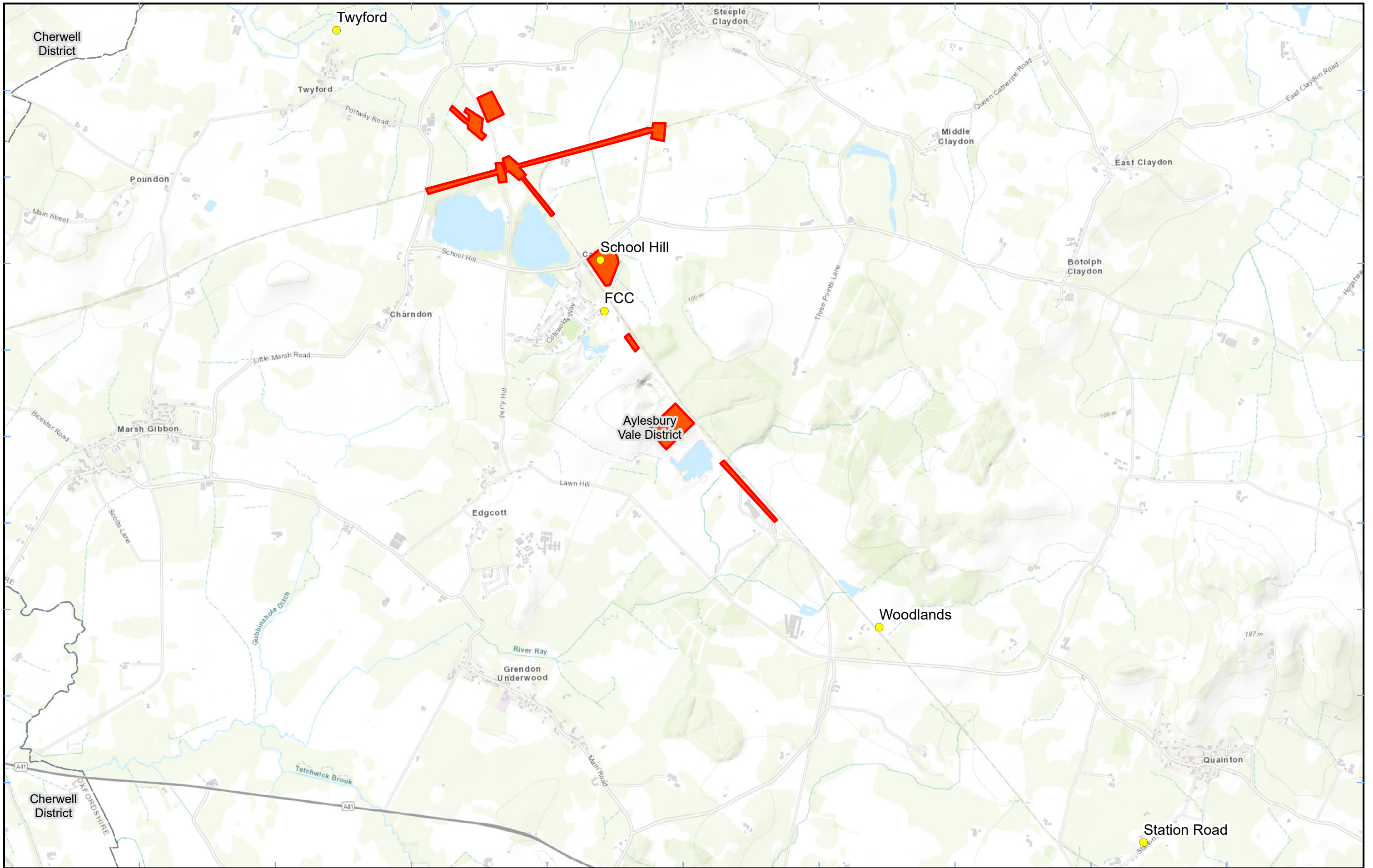
HS2 Ltd accept no responsibility for any circumstances, which arise from the reproduction of this map after alteration, amendment or abbreviation or if it is issued in part or issued incomplete in any way.

Registered in England. Registration number 06791686.
 Registered office: 2 Snowhill, Queensway, Birmingham B4 6GA.

© Crown copyright and database rights 2023.
 Ordnance Survey Licence Number 100049190.

Scale at A3: 1:34,000

Doc Number: _____ Date: 06/07/23



Legend

- Dust monitor
- District Borough Unitary Boundaries
- Worksite


Service Layer Credits: Sources: Esri, HERE, Garmin, Intermap, increment P Corp., GEBCO, USGS, FAO, NPS, NRCAN, GeoBase, IGN, Kadaster NL, Ordnance Survey, Esri Japan, METI, Esri China (Hong Kong), (c) OpenStreetMap contributors, and the GIS User Community

Map Number

Map Name

**Worksite & Monitoring Locations
In BC (Sheet 2)**


Buckinghamshire County



Registered in England. Registration number 06791686.
Registered office: 2 Snowhill, Queensway,
Birmingham B4 6GA.

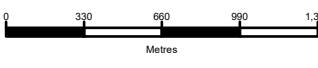
© Crown copyright and database rights 2023.
Ordnance Survey Licence Number 100049190.

Doc Number:



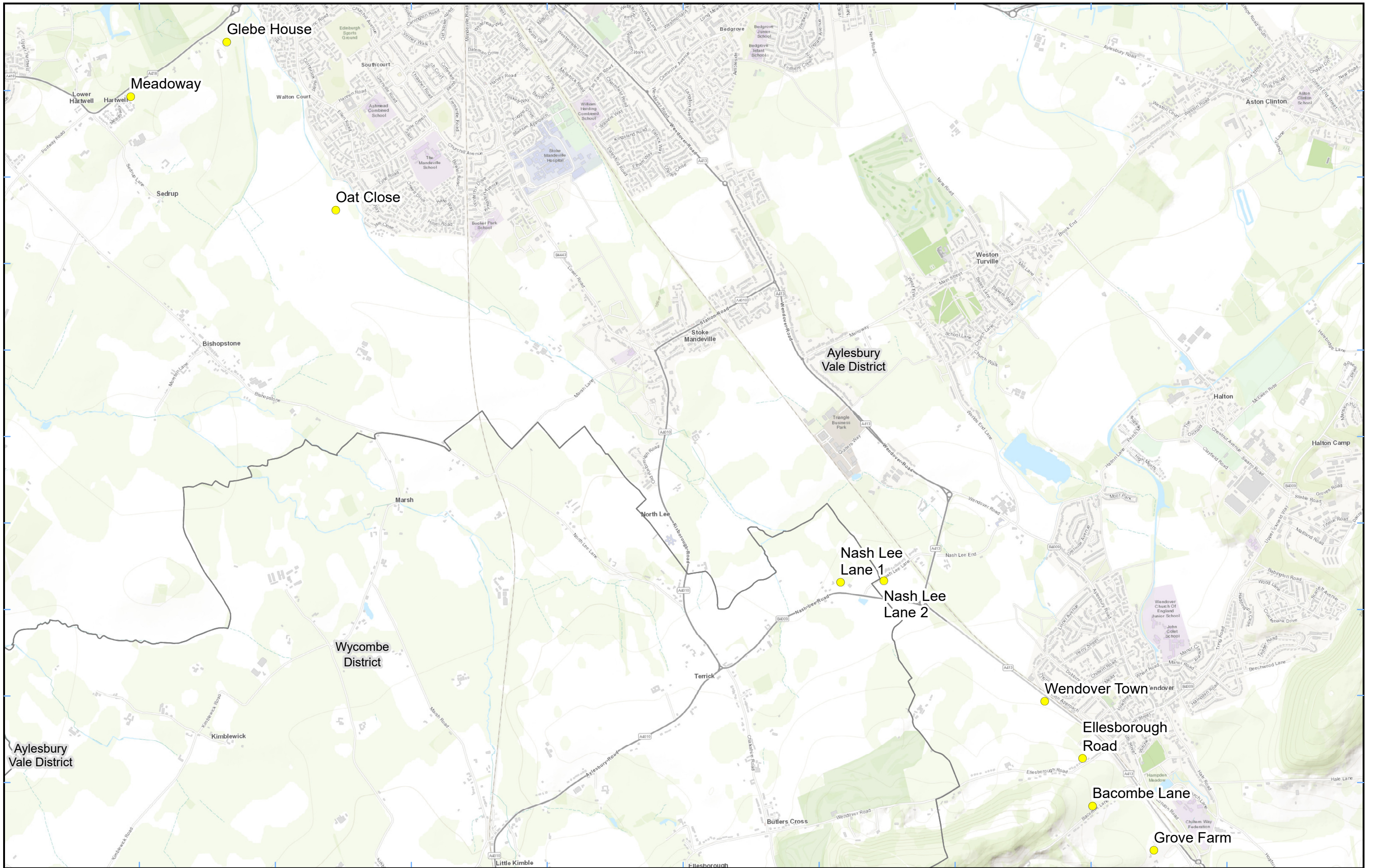
HS2 Ltd accept no responsibility for any circumstances, which arise from the reproduction of this map after alteration, amendment or abbreviation or if it is issued in part or issued incomplete in any way.

Scale at A3: 1:32,000



Metres

Date: 18/05/23



Legend
 Dust monitor
 District Borough Unitary Boundaries

Service Layer Credits: Sources: Esri, HERE, Garmin, Intermap, increment P Corp., GEBCO, USGS, FAO, NPS, NRCAN, GeoBase, IGN, Kadaster NL, Ordnance Survey, Esri Japan, METI, Esri China (Hong Kong), (c) OpenStreetMap contributors, and the GIS User Community

Map Number
 Map Name
**Monitoring Locations
 In BC (Sheet 3)**
Buckinghamshire County

hs2
 HS2 Ltd accept no responsibility for any circumstances, which arise from the reproduction of this map after alteration, amendment or abbreviation or if it is issued in part or issued incomplete in any way.

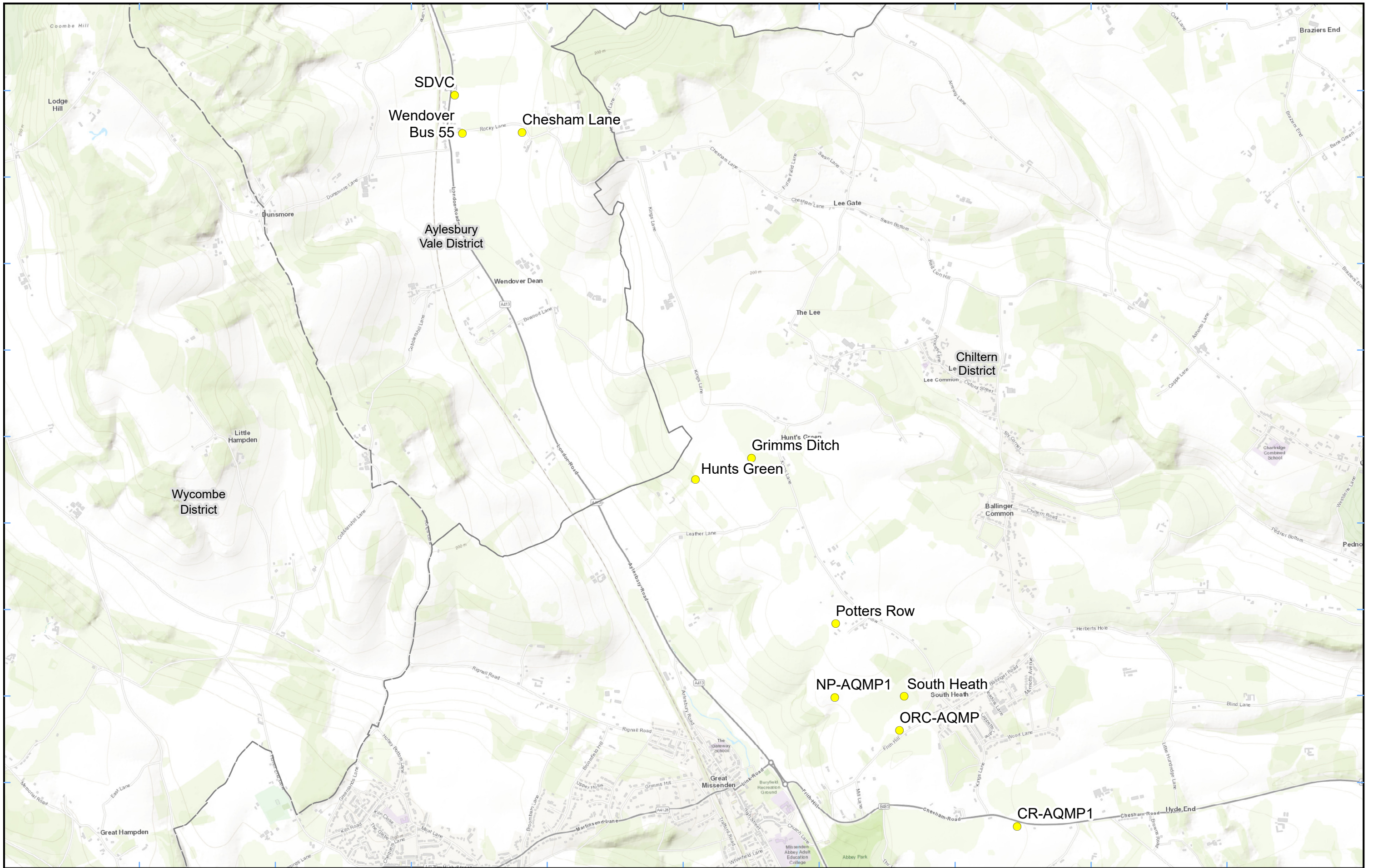
Registered in England. Registration number 06791686.
 Registered office: 2 Snowhill, Queensway, Birmingham B4 6GA.

© Crown copyright and database rights 2023.
 Ordnance Survey Licence Number 100049190.

Scale at A3: 1:24,000

0 240 480 720 960
 Metres

Date: 18/05/23



Legend

- Dust Monitor
- District Borough Unitary Boundaries

Service Layer Credits: Sources: Esri, HERE, Garmin, Intermap, increment P Corp., GEBCO, USGS, FAO, NPS, NRCAN, GeoBase, IGN, Kadaster NL, Ordnance Survey, Esri Japan, METI, Esri China (Hong Kong), (c) OpenStreetMap contributors, and the GIS User Community

Map Number

Map Name

**Monitoring Locations
In BC (Sheet 4)**

Buckinghamshire County

hs2

HS2 Ltd accept no responsibility for any circumstances, which arise from the reproduction of this map after alteration, amendment or abbreviation or if it is issued in part or issued incomplete in any way.

Registered in England. Registration number 06791686.
Registered office: 2 Snowhill, Queensway,
Birmingham B4 6GA.

© Crown copyright and database rights 2023.
Ordnance Survey Licence Number 100049190.

Scale at A3: 1:23,000

0 230 460 690 920
Metres

Doc Number: Date: 06/07/23



Legend
 Dust Monitor
 Worksite
 District Borough Unitary Boundaries

Service Layer Credits: Sources: Esri, HERE, Garmin, Intermap, increment P Corp., GEBCO, USGS, FAO, NPS, NRCAN, GeoBase, IGN, Kadaster NL, Ordnance Survey, Esri Japan, METI, Esri China (Hong Kong), (c) OpenStreetMap contributors, and the GIS User Community

Map Number
 Map Name
**Worksite and Monitoring Locations
 In BC (Sheet5)**
 Buckinghamshire County

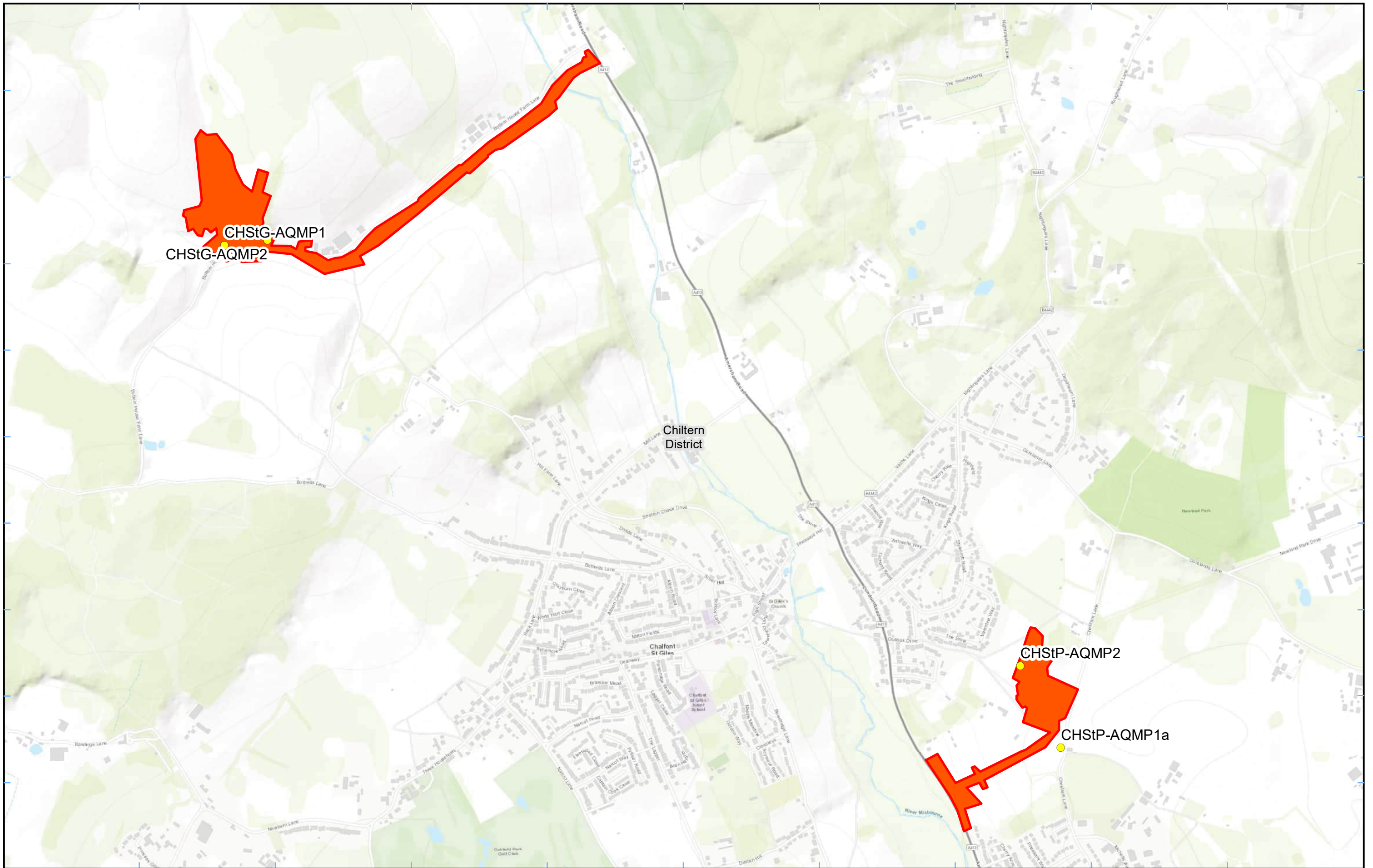
HS2 Ltd accept no responsibility for any circumstances, which arise from the reproduction of this map after alteration, amendment or abbreviation or if it is issued in part or issued incomplete in any way.

Registered in England. Registration number 06791686.
 Registered office: 2 Snowhill, Queensway, Birmingham B4 6GA.

© Crown copyright and database rights 2022.
 Ordnance Survey Licence Number 100049190.

Scale at A3: 1:11,000

Doc Number: Date: 22/02/22



Legend
 ● Dust Monitor □ District Borough Unitary Boundaries
 ■ Worksite

Service Layer Credits: Sources: Esri, HERE, Garmin, Intermap, increment P Corp., GEBCO, USGS, FAO, NPS, NRCAN, GeoBase, IGN, Kadaster NL, Ordnance Survey, Esri Japan, METI, Esri China (Hong Kong), (c) OpenStreetMap contributors, and the GIS User Community

Map Number
 Map Name
**Monitoring Locations
 In BC (Sheet 6)**
 Buckinghamshire County

hs2
 HS2 Ltd accept no responsibility for any circumstances, which arise from the reproduction of this map after alteration, amendment or abbreviation or if it is issued in part or issued incomplete in any way.

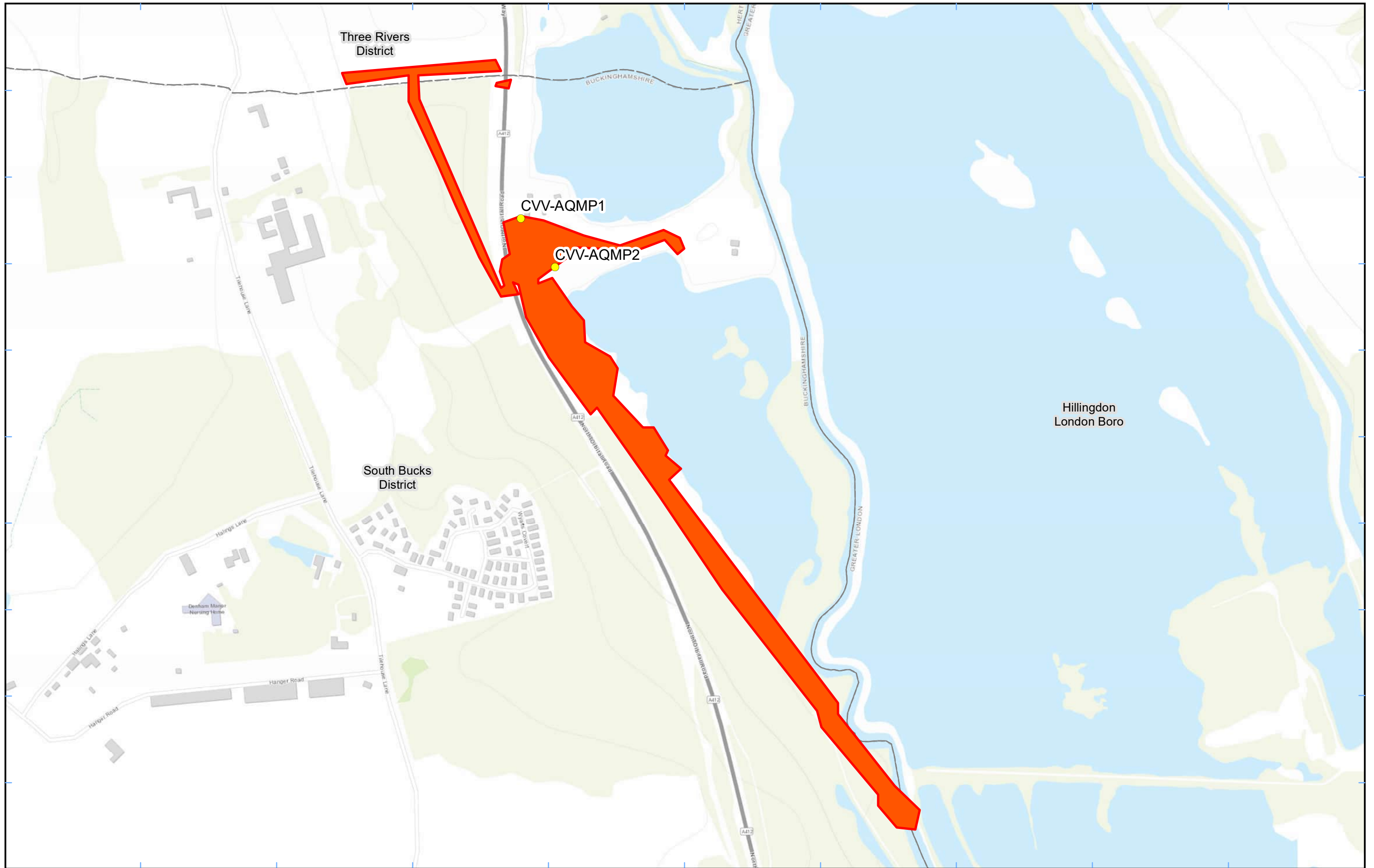
Registered in England. Registration number 06791686.
 Registered office: 2 Snowhill, Queensway, Birmingham B4 6GA.

© Crown copyright and database rights 2022.
 Ordnance Survey Licence Number 100049190.

Scale at A3: 1:12,000

0 120 240 360 480
 Metres

Doc Number: **Date: 22/02/22**



Legend

- Dust Monitor
- District Borough Unitary Boundaries
- Worksite

Service Layer Credits: Sources: Esri, HERE, Garmin, Intermap, increment P Corp., GEBCO, USGS, FAO, NPS, NRCAN, GeoBase, IGN, Kadaster NL, Ordnance Survey, Esri Japan, METI, Esri China (Hong Kong), (c) OpenStreetMap contributors, and the GIS User Community

Map Number
Map Name Worksite and Monitoring Locations In BC (Sheet7)
Buckinghamshire County

Map Number

Map Name
**Worksite and Monitoring Locations
In BC (Sheet7)**

Buckinghamshire County

HS2 Ltd accept no responsibility for any circumstances, which arise from the reproduction of this map after alteration, amendment or abbreviation or if it is issued in part or issued incomplete in any way.

Registered in England. Registration number 06791686.
Registered office: 2 Snowhill, Queensway,
Birmingham B4 6GA.

© Crown copyright and database rights 2022.
Ordnance Survey Licence Number 100049190.

Doc Number:

Scale at A3: 1:5,000

Date: 22/02/22

Appendix B – Dust Monitoring Results

Table 1: Dust monitoring locations and May 2023 Results

Monitoring site ID	Coordinates (X,Y)	Location description	Dust risk rating for site	Monitoring site active during period	Change to site since previous period report	Mean 1-hour PM ₁₀ concentration (µg/m ³)	Minimum 1-hour PM ₁₀ concentration (µg/m ³)	Maximum 1-hour PM ₁₀ concentration (µg/m ³)	Number of 1-hour periods exceeding trigger level of 190 µg/m ³	Data capture (%)
CVW-AQMP1	503612, 189846	On the north boundary of LTP1	M	Yes	Yes	7.5	1.0	46.0	0	100.0
CVW-AQMP2	503662, 189775	On the south boundary of LTP1	M	Yes	Yes	7.8	1.0	30.0	0	100.0
CHStP-AQMP1a	500093, 192996	Relocated from CHStP-NMP1 to site-boundary outside residence	M	Yes	Yes	8.0	1.0	51.0	0	100.0
CHStP-AQMP2	499951, 193282	On the western boundary of the site	M	Yes	Yes	7.5	1.0	42.0	0	100.0
AMER-AQMP1	495367, 196722	On the north-eastern boundary of Amersham	M	Yes	Yes	7.6	1.0	28.0	0	98.7
AMER-AQMP2	495263, 196590	On the south-western boundary of Amersham	M	Yes	Yes	7.6	1.0	27.0	0	98.7
CHStG-AQMP1	497170, 194752	On the southern boundary close to Hobbs Hole Cottage	M	Yes	Yes	7.3	1.0	28.0	0	99.3
CHStG-AQMP2	497320, 194770	On southern boundary next to carpark	M	Yes	Yes	7.2	1.0	29.0	0	99.9
LMS-AQMP1	493190, 198848	On the south-west of the site	M	Yes	Yes	7.3	1.0	25.0	0	88.8
LMS-AQMP2	493407, 198731	On the south-east of the site	M	Yes	Yes	7.5	1.0	27.0	0	100.0

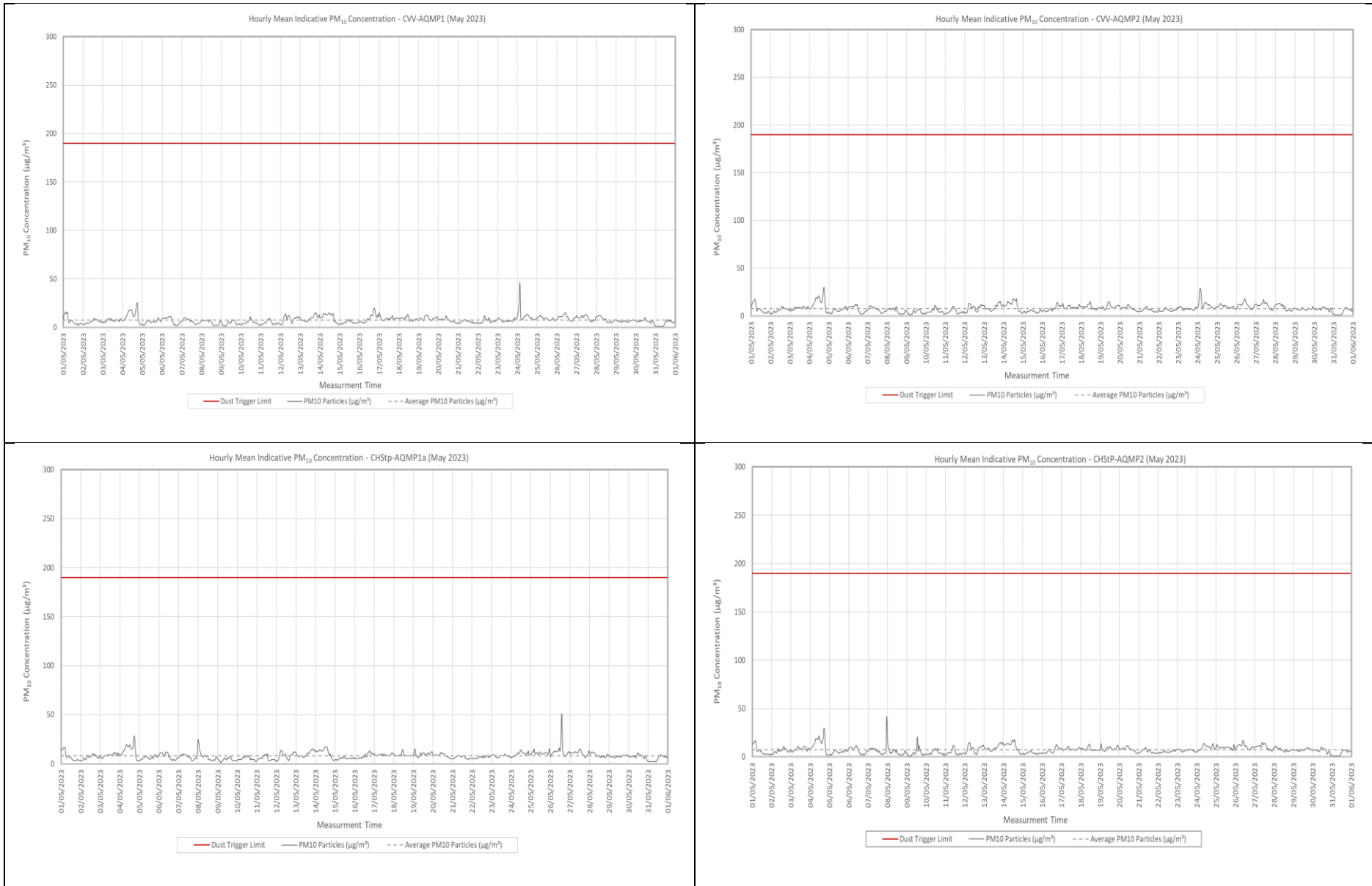
Monitoring site ID	Coordinates (X,Y)	Location description	Dust risk rating for site	Monitoring site active during period	Change to site since previous period report	Mean 1-hour PM ₁₀ concentration (µg/m ³)	Minimum 1-hour PM ₁₀ concentration (µg/m ³)	Maximum 1-hour PM ₁₀ concentration (µg/m ³)	Number of 1-hour periods exceeding trigger level of 190 µg/m ³	Data capture (%)
CR-AQMP1	491291, 201143	On the Chesham Road Vent Shaft	M	Yes	Yes	7.4	1.0	30.0	0	100.0
ORC-AQMP	490503, 201786	Orchard Cottage South-eastern Site Boundary	M	Yes	Yes	7.4	1.0	24.0	0	100.0
NP-AQMP1	490069, 202008	North Portal Site Entrance	M	Yes	Yes	8.5	1.0	29.0	0	77.6
School Hill (CAL-AQMP2) - Dust	469003, 224740	School Hill Compound	M	Yes	Yes	8.9	1.0	28.0	0	70.3
School End - Dust	463666, 230049	School End, Chetwode	M	Yes	Yes	9.9	4.0	34.0	0	12.8
South Heath - Dust	490534, 202014	Bury Farm, South Heath	M	Yes	Yes	-	-	-	-	-
Potter Rows - Dust	490075, 202502	Potters Row, South Heath	M	Yes	Yes	23.9	1.0	754.0	11	99.6
Grimms Ditch - Dust	489135, 203468	Leather Lane, The Lee, South Heath	M	Yes	Yes	8.2	1.0	21.0	0	24.2
Hunts Green - Dust	489511, 203611	The Lee, South Heath	M	Yes	Yes	-	-	-	-	-
Chesham Lane - Dust	487974, 205794	Chesham Lane, The Lee, Wendover	M	Yes	Yes	7.3	1.0	34.0	0	99.5
Wendover Bus 55 - Dust	487574, 205787	Chesham Lane, The Lee, Wendover	M	Yes	Yes	7.7	1.0	38.0	0	99.5
Meadoway - Dust	479803, 212178	Aylesbury, Buckinghamshire	M	Yes	Yes	8.7	1.0	23.0	0	27.2
Oat Close - Dust	481237, 211384	Oat Close, Bishopstone, Aylesbury	M	Yes	Yes	7.5	1.0	39.0	0	72.7
Twyford - Dust	466544, 226883	Twyford, Buckinghamshire	M	Yes	Yes	7.7	1.0	27.0	0	99.7
Chetwode/Hermitage - Dust	463936, 229521	Hermitage, Chetwode	M	Yes	Yes	8.5	1.0	30.0	0	46.1

Monitoring site ID	Coordinates (X,Y)	Location description	Dust risk rating for site	Monitoring site active during period	Change to site since previous period report	Mean 1-hour PM ₁₀ concentration (µg/m ³)	Minimum 1-hour PM ₁₀ concentration (µg/m ³)	Maximum 1-hour PM ₁₀ concentration (µg/m ³)	Number of 1-hour periods exceeding trigger level of 190 µg/m ³	Data capture (%)
Glebe House - Dust	480475, 212560	A418 Aylesbury	M	Yes	Yes	-	-	-	-	-
Turweston North - Dust	460439 , 237140	Turweston, Buckinghamshire	M	Yes	Yes	7.2	1.0	24.0	0	86.3
FCC - Dust	469042 , 224263	Adjacent Red Kite View, Calvert	M	Yes	Yes	9.7	1.0	25.0	0	43.3
Ellesborough Road - Dust	486458 , 207550	Ellesborough Road, Wendover	M	Yes	Yes	8.4	1.0	35.0	0	72.3
Nash Lee Road - Dust	484766 , 208782	Nash Lee Lane (west)	M	Yes	Yes	8.3	1.0	41.0	0	90.2
Nash Lee Lane - Dust	485069 , 208793	Nash Lee Lane (east)	M	Yes	Yes	7.7	1.0	37.0	0	99.5
Bacombe Lane - Dust	486528 , 207217	Bacombe Lane, Wendover	M	Yes	Yes	7.3	1.0	42.0	0	99.5
SDVC - Dust	487522, 206043	Small Dean Viaduct, London Road	M	Yes	Yes	8.3	1.0	43.0	0	99.3
Station Road - Dust	474068, 219307	Station Road, Quainton	M	Yes	Yes	-	-	-	-	-
Wendover Town - Dust	486193, 207950	Wendover Bypass, Wendover	M	Yes	Yes	8.6	1.0	20.0	0	45.4
Woodlands - Dust	471603, 221315	Station Rd, Quainton, Woodlands Farmhouse	M	Yes	Yes	7.5	1.0	36.0	0	99.7
Grove Farm	486957, 206908	Grove Farm, London Road, Wendover	M	Yes	Yes	8.2	1.0	41.0	0	98.4

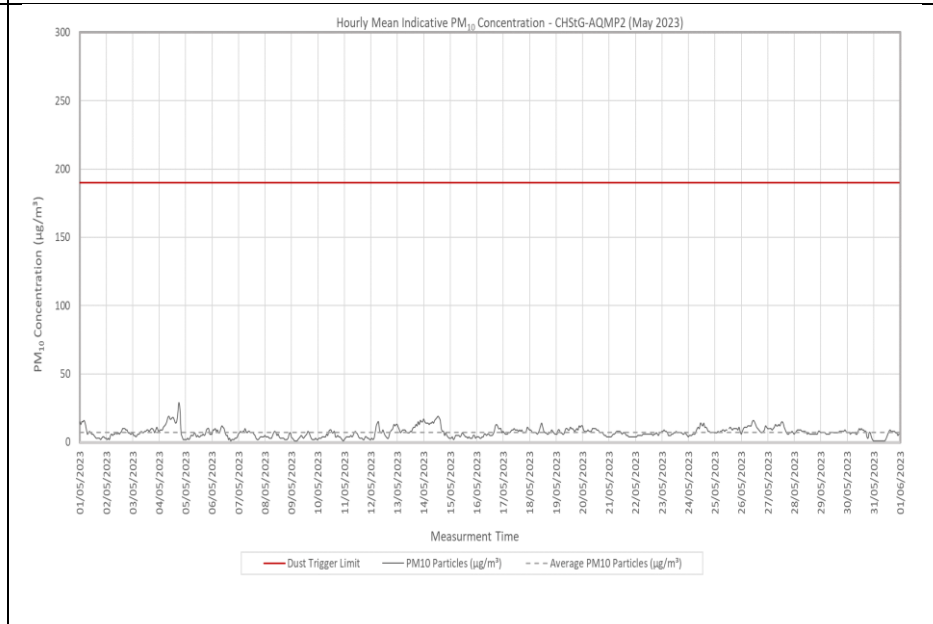
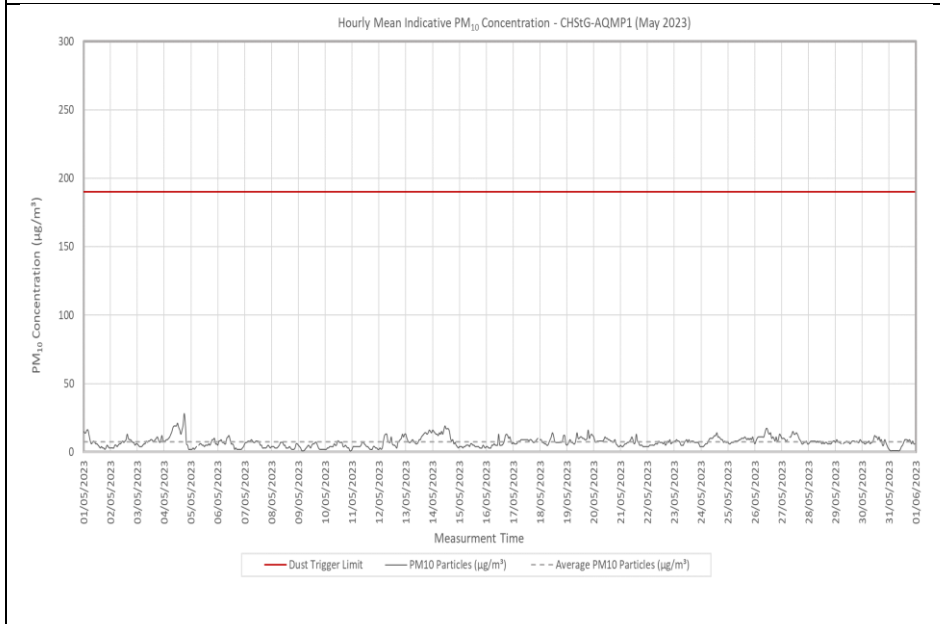
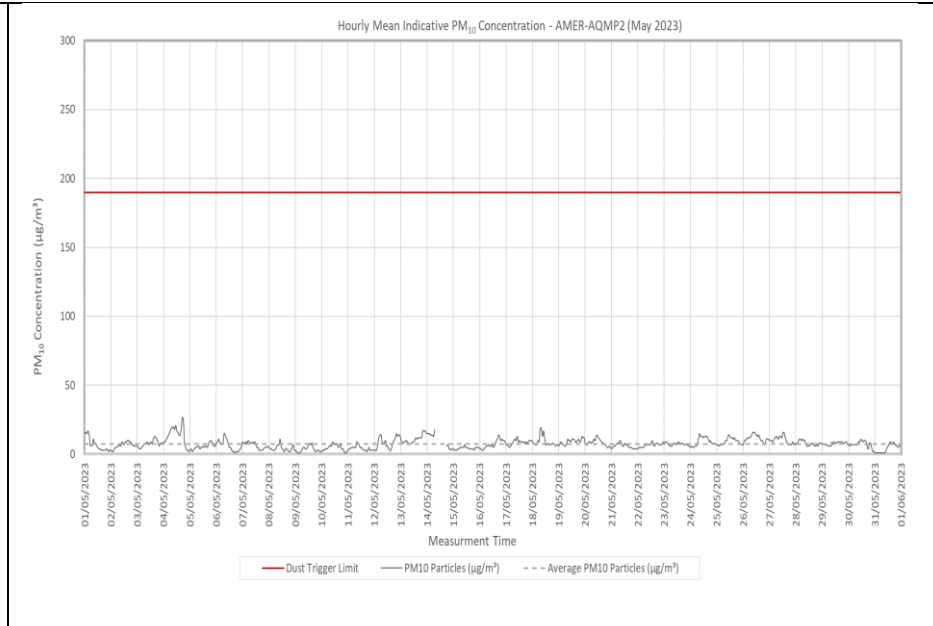
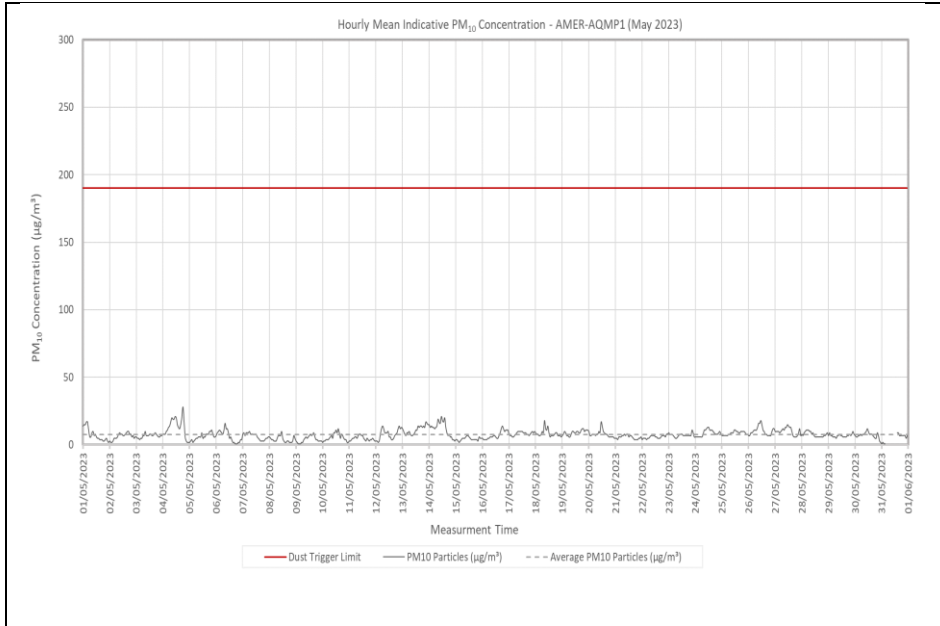
Table 2: Summary of exceedances during period (May 2023)

Monitoring Site ID	Period of trigger alert & Concentration recorded ($\mu\text{g}/\text{m}^3$)	Investigation	Outcomes / Resolution / Remedial measures implemented
Potter Row – Dust	15 May 2023: 10:00 – 10:59; 707 $\mu\text{g}/\text{m}^3$ 11:00 – 11:59; 336 $\mu\text{g}/\text{m}^3$ 14:00 – 14:59; 302 $\mu\text{g}/\text{m}^3$ 16:00 – 16:59; 325 $\mu\text{g}/\text{m}^3$	Horace INC15656	Investigation of Incident concluded not related to HS2 Works
	16 May 2023: 09:00 – 09:59; 232 $\mu\text{g}/\text{m}^3$	One off spike at between about 10:40 and 10:46	The readings afterwards were normal and delivery team confirms works weren't going on around that area.
	16 May 2023: 19:00 – 19:59; 383 $\mu\text{g}/\text{m}^3$	Out of Working Hours	Out of Working Hours
	25 May 2023: 10:00 – 10:59; 461 $\mu\text{g}/\text{m}^3$	Horace INC15895	One off spike, Dust Suppression increased significantly
	25 May 2023: 17:00 – 17:59 229 $\mu\text{g}/\text{m}^3$ 19:00 – 19:59; 754 $\mu\text{g}/\text{m}^3$ 20:00 – 20:59; 225 $\mu\text{g}/\text{m}^3$ 22:00 – 22:59; 358 $\mu\text{g}/\text{m}^3$	Out of Working Hours	Out of Working Hours

Figure 8: Continuous dust 1-hour mean indicative PM₁₀ concentration for all dust monitors



Air Quality and Dust Monitoring Summary Report, May 2023
 Buckinghamshire Council



Air Quality and Dust Monitoring Summary Report, May 2023
 Buckinghamshire Council

