

## Air Quality and Dust Monitoring Monthly Report – April 2023

Stratford-on-Avon District Council



## Department for Transport

High Speed Two (HS2) Limited has been tasked by the Department for Transport (DfT) with managing the delivery of a new national high speed rail network. It is a non-departmental public body wholly owned by the DfT.

High Speed Two (HS2) Limited,  
Two Snowhill  
Snow Hill Queensway  
Birmingham B4 6GA

Telephone: 08081 434 434

General email enquiries: [HS2enquiries@hs2.org.uk](mailto:HS2enquiries@hs2.org.uk)

Website: [www.gov.uk/hs2](http://www.gov.uk/hs2)

A report prepared by EWCs and MWCCs on behalf of HS2 Ltd.

High Speed Two (HS2) Limited has actively considered the needs of blind and partially sighted people in accessing this document. The text will be made available in full on the HS2 website. The text may be freely downloaded and translated by individuals or organisations for conversion into other accessible formats. If you have other needs in this regard please contact High Speed Two (HS2) Limited.

© High Speed Two (HS2) Limited, 2021, except where otherwise stated.

Copyright in the typographical arrangement rests with High Speed Two (HS2) Limited.

This information is licensed under the Open Government Licence v2.0. To view this licence, visit [www.nationalarchives.gov.uk/doc/open-government-licence/version/2](http://www.nationalarchives.gov.uk/doc/open-government-licence/version/2) **OGI** or write to the Information Policy Team, The National Archives, Kew, London TW9 4DU, or e-mail: [psi@nationalarchives.gsi.gov.uk](mailto:psi@nationalarchives.gsi.gov.uk). Where we have identified any third-party copyright information you will need to obtain permission from the copyright holders concerned.



Printed in Great Britain on paper containing at least 75% recycled fibre.

# Monthly Summary

- 1.1.1 This Summary Report is published in fulfilment of commitments detailed in the High Speed Rail (London-West Midlands) Environmental Minimum Requirements, Annex 1: Code of Construction Practice, for the nominated undertaker to present the results of air quality and dust monitoring undertaken in Stratford-on-Avon District (SoADC) during April 2023.
- 1.1.2 Figures 1 and 2 in Appendix A indicate the current worksites together with the dust monitoring locations for April 2023.
- 1.1.3 This summary should be read in conjunction with the overview monitoring report monthly available from [www.gov.uk/government/collections/monitoring-the-environmental-effects-of-hs2](http://www.gov.uk/government/collections/monitoring-the-environmental-effects-of-hs2), which highlights: the applicable standards and guidance, as well as the air quality and dust monitoring methodologies to be implemented by nominated undertakers throughout construction.
- 1.1.4 The current worksites as presented in Appendix A, Figures 1 and 2, include:

## **Long Itchington Wood North Portal site (Sublot 1A)**

- Earth works; and
- Site maintenance.

## Fosse Way Compound site (Sublot 2A2)

- Road head construction

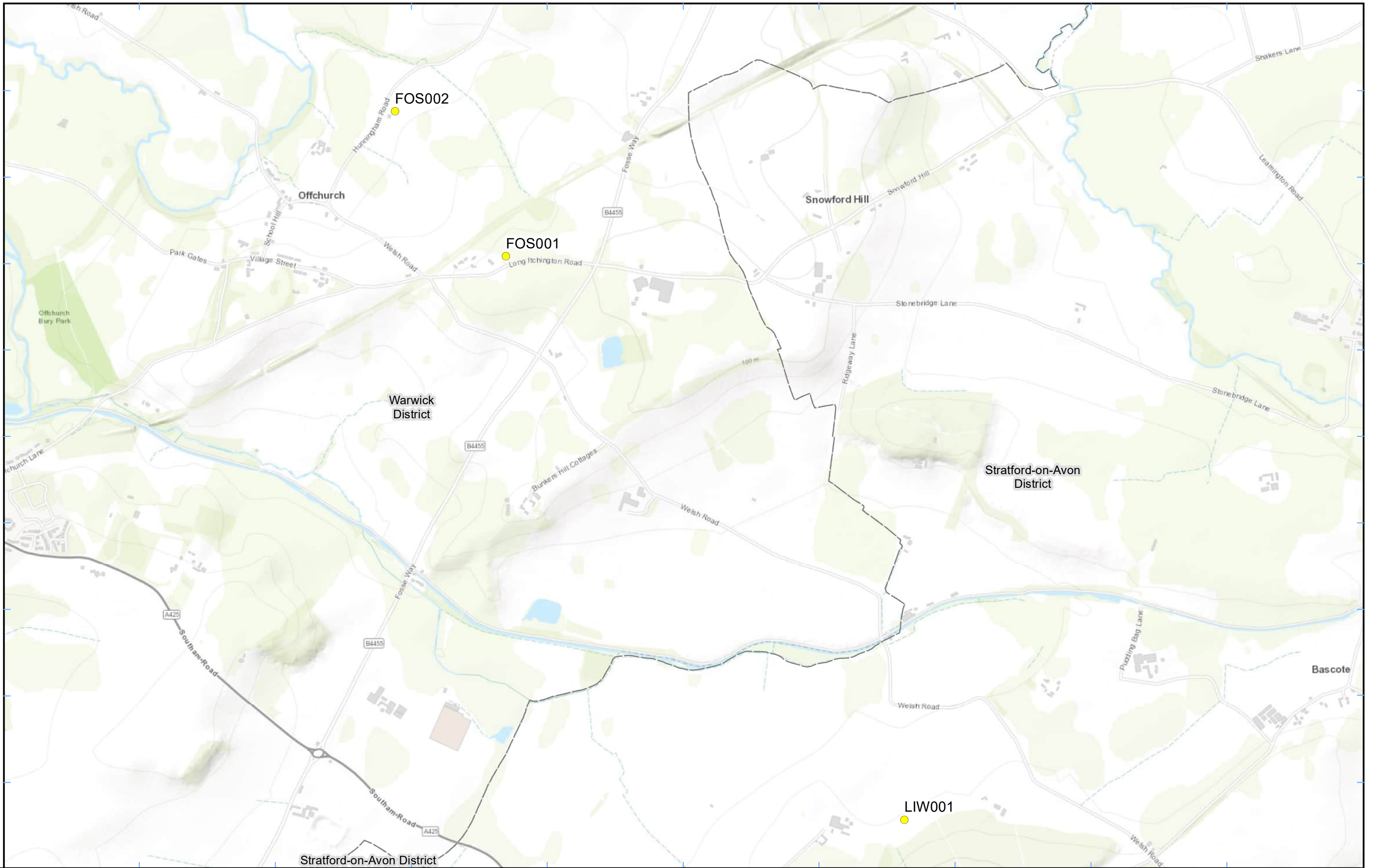
## **Southam worksite**

- Installation of drainage and culverts
- Pond maintenance
- Topsoil stripping and material movement
- Further establishment of the site access road
- Bulk earthworks Southam Cutting, Windmill Hill & Ladbroke Cutting
- Southam Embankment bulk earthworks
- Embankment fill.
- Earthworks for piling platform works at Ladbroke Grove Farm AOB.
- Earthworks for piling platform works at Lower Radbourne Farm AOB.
- Pouring of pilecap at Lower Radbourne Farm Aob
- Piling at Kineton Road OB.
- Lower Radbourne River Diversion
- Frameworks at A423 OB.
- River Itchen SAR
- Oxford Canal Bridge works

- 1.1.5 Five (5) dust monitors are installed at the worksite, where works are underway. These sites returned a low to medium dust risk rating.
- 1.1.6 Dust monitoring location and results are presented in Appendix B, Table 1, together with line charts of monthly data from the dust monitor presented in Figure 3. All continuous dust monitoring is undertaken using indicative monitors. Despite being Environment Agency (MCERTS) certified, indicative monitors carry a higher level of uncertainty than reference monitors, and therefore cannot be strictly compared with Air Quality Standards for human health and the environment. The purpose of the monitoring undertaken is to ensure the effectiveness of the on-site mitigations.
- 1.1.7 The trigger level for PM<sub>10</sub> concentrations of 190 µg/m<sup>3</sup>, over a 1-hour period, in accordance with the updated guidance document '*Guidance on Monitoring in the Vicinity of Demolition and Construction Sites - (October 2018)*' has been applied.
- 1.1.8 Details of the trigger alert investigations and remediations are presented in Appendix B, Table 2.
- 1.1.9 Data capture was below 90% for FOS002 due to the monitor recording unusually low readings during the monitoring period (April 2023).
- 1.1.10 There were no (0) complaints received during this reporting period (April 2023).

# Appendix A – Worksites and Monitoring Locations

Figures 1 and 2: Worksites and Monitoring Locations within SoADC



**Legend**

- Dust Monitor
- District Borough Unitary Boundaries

Service Layer Credits: Sources: Esri, HERE, Garmin, Intermap, increment P Corp., GEBCO, USGS, FAO, NPS, NRCAN, GeoBase, IGN, Kadaster NL, Ordnance Survey, Esri Japan, METI, Esri China (Hong Kong), swisstopo, © OpenStreetMap contributors, and the GIS User Community

Map Number

Map Name  
**Worksite & Monitoring Locations  
 In SoADC (Sheet 1)**

**Stratford-on-Avon District Council**

**hs2**

HS2 Ltd accept no responsibility for any circumstances, which arise from the reproduction of this map after alteration, amendment or abbreviation or if it is issued in part or issued incomplete in any way.

Registered in England. Registration number 06791686.  
 Registered office: 2 Snowhill, Queensway,  
 Birmingham B4 6GA.

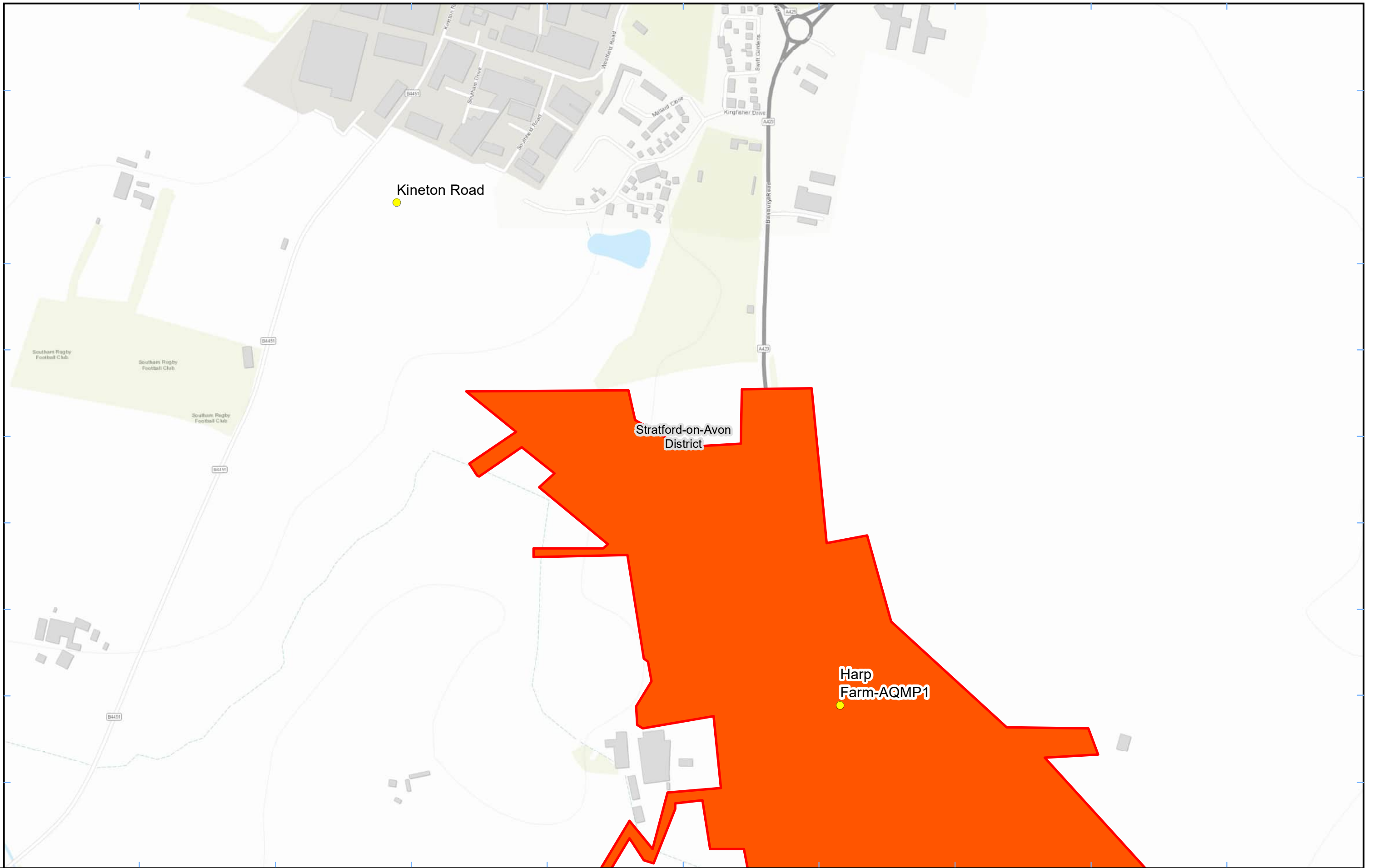
© Crown copyright and database rights 2022.  
 Ordnance Survey Licence Number 100049190.

Scale at A3: 1:15,000

0 150 300 450 600  
 Metres

**Doc Number:**

**Date: 30/11/22**



**Legend**

- Dust Monitor
- District Borough Unitary Boundaries

Service Layer Credits: Sources: Esri, HERE, Garmin, Intermap, increment P Corp., GEBCO, USGS, FAO, NPS, NRCAN, GeoBase, IGN, Kadaster NL, Ordnance Survey, Esri Japan, METI, Esri China (Hong Kong), swisstopo, © OpenStreetMap contributors, and the GIS User Community

Map Number

---

Map Name  
**Worksite & Monitoring Locations  
 In SoADC (Sheet 2)**

---

**Stratford-on-Avon District Council**

**hs2**

HS2 Ltd accept no responsibility for any circumstances, which arise from the reproduction of this map after alteration, amendment or abbreviation or if it is issued in part or issued incomplete in any way.

Registered in England. Registration number 06791686.  
 Registered office: 2 Snowhill, Queensway,  
 Birmingham B4 6GA.

© Crown copyright and database rights 2022.  
 Ordnance Survey Licence Number 100049190.

**Scale at A3: 1:5,000**

**Doc Number:**

**Date: 30/11/22**

# Appendix B – Dust Monitoring Results

Table 1: Dust Monitoring Locations and April 2023 Results

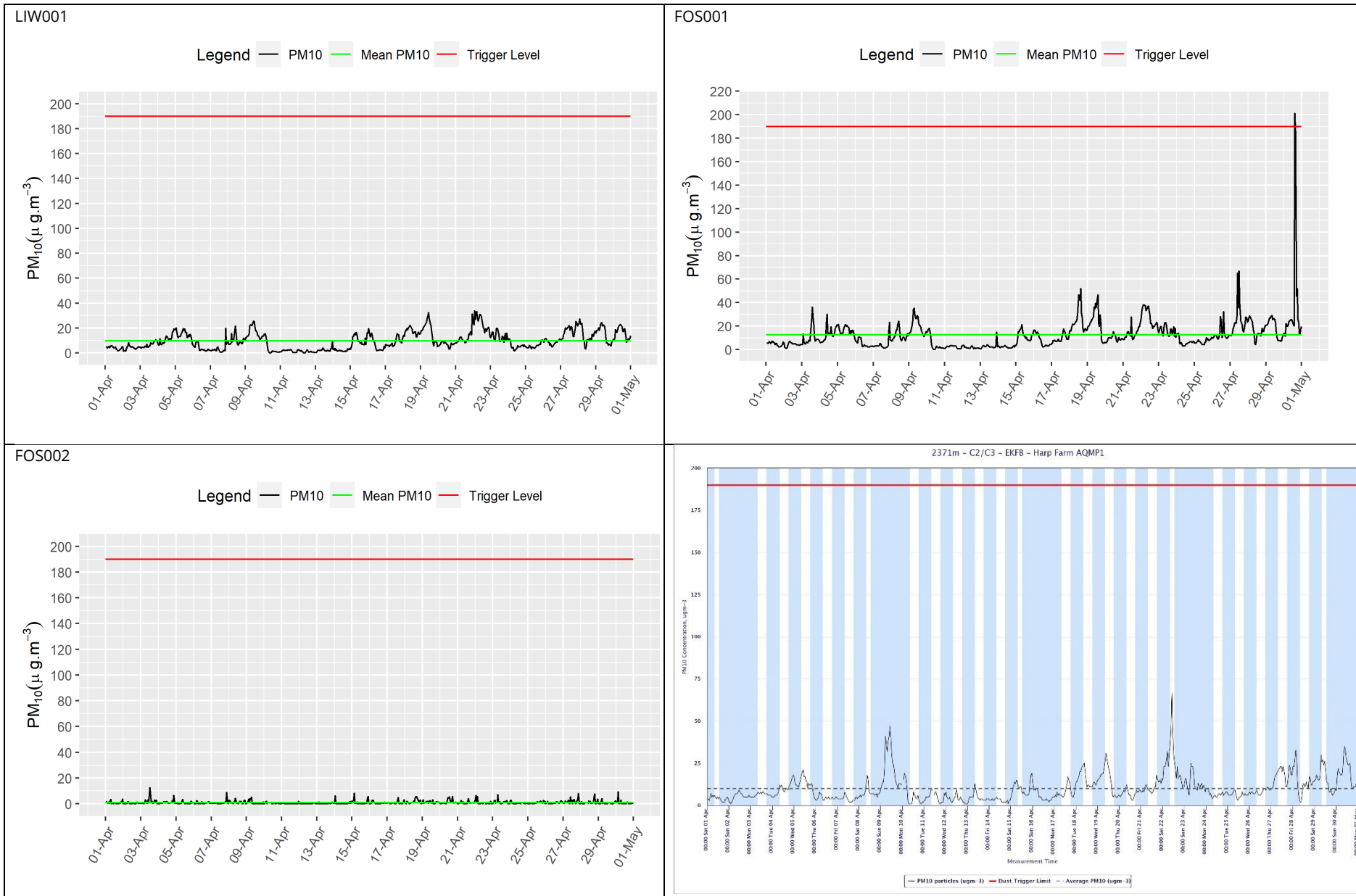
Monitoring site ID	Coordinates (X,Y)	Location description	Dust risk rating for site	Monitoring site active during period	Change to site since previous period report	Mean 1-hour PM <sub>10</sub> concentration (µg/m <sup>3</sup> )	Minimum 1-hour PM <sub>10</sub> concentration (µg/m <sup>3</sup> )	Maximum 1-hour PM <sub>10</sub> concentration (µg/m <sup>3</sup> )	Number of 1-hour periods exceeding trigger level of 190 µg/m <sup>3</sup>	Data capture (%)
LIW001	438656, 263180	Long Itchington Wood North Portal, at boundary with Long Itchington and Ufton Woods SSSI.	M	Yes	No	9.7	0.1	33.8	0	99.9
FOS001	436914, 265643	Fosse Way Compound, on Long Itchington Road	L	Yes	No	12.6	0.1	201.3	1	99.9
FOS002	436429, 266276	Valley Fields, Fosse Way Main	L	Yes	No	1.0	0.1	12.6	0	82.1
Harp Farm-AQMP1	441738, 260075	Site boundary adjacent property on Harp Farm	M	Yes	Yes	10.0	1.0	67.0	0	99.9
Kineton Rd	441092, 260808	Adjacent to Kineton Road roundabout	M	Yes	Yes	9.7	1.0	53.0	0	98.6

Table 2: Summary of exceedances during period (April 2023)

Monitoring Site ID	Period of trigger alert & Concentration recorded	Investigation	Outcomes / Resolution / Remedial measures implemented
FOS001	30/04/2023 14:00 – 14:59; 201.3 µg/m <sup>3</sup>	This dust trigger alert was not caused by HS2 construction work as the alert occurred on a Sunday and no works were taking place at the time.	N/A



Figure 3: Construction dust 1-hour mean indicative PM<sub>10</sub> concentration for all dust monitors



Air Quality and Dust Monitoring Summary Report, April 2023  
Stratford-on-Avon District Council

