

Tidal Streams referred to H.W. at LIVERPOOL

Hours	S.W. BY W.		S.W. BY S.		S.W. BY E.		S.W. BY N.		S.W. BY W.	
	Sp. No.	Dir.	Sp. No.	Dir.	Sp. No.	Dir.	Sp. No.	Dir.	Sp. No.	Dir.
11:00	11	110	12	120	13	130	14	140	15	150
11:30	12	120	13	130	14	140	15	150	16	160
12:00	13	130	14	140	15	150	16	160	17	170
12:30	14	140	15	150	16	160	17	170	18	180
13:00	15	150	16	160	17	170	18	180	19	190
13:30	16	160	17	170	18	180	19	190	20	200
14:00	17	170	18	180	19	190	20	200	21	210
14:30	18	180	19	190	20	200	21	210	22	220
15:00	19	190	20	200	21	210	22	220	23	230
15:30	20	200	21	210	22	220	23	230	24	240
16:00	21	210	22	220	23	230	24	240	25	250
16:30	22	220	23	230	24	240	25	250	26	260
17:00	23	230	24	240	25	250	26	260	27	270
17:30	24	240	25	250	26	260	27	270	28	280
18:00	25	250	26	260	27	270	28	280	29	290
18:30	26	260	27	270	28	280	29	290	30	300
19:00	27	270	28	280	29	290	30	300	31	310
19:30	28	280	29	290	30	300	31	310	32	320
20:00	29	290	30	300	31	310	32	320	33	330
20:30	30	300	31	310	32	320	33	330	34	340
21:00	31	310	32	320	33	330	34	340	35	350
21:30	32	320	33	330	34	340	35	350	36	360
22:00	33	330	34	340	35	350	36	360	37	370
22:30	34	340	35	350	36	360	37	370	38	380
23:00	35	350	36	360	37	370	38	380	39	390
23:30	36	360	37	370	38	380	39	390	40	400
24:00	37	370	38	380	39	390	40	400	41	410

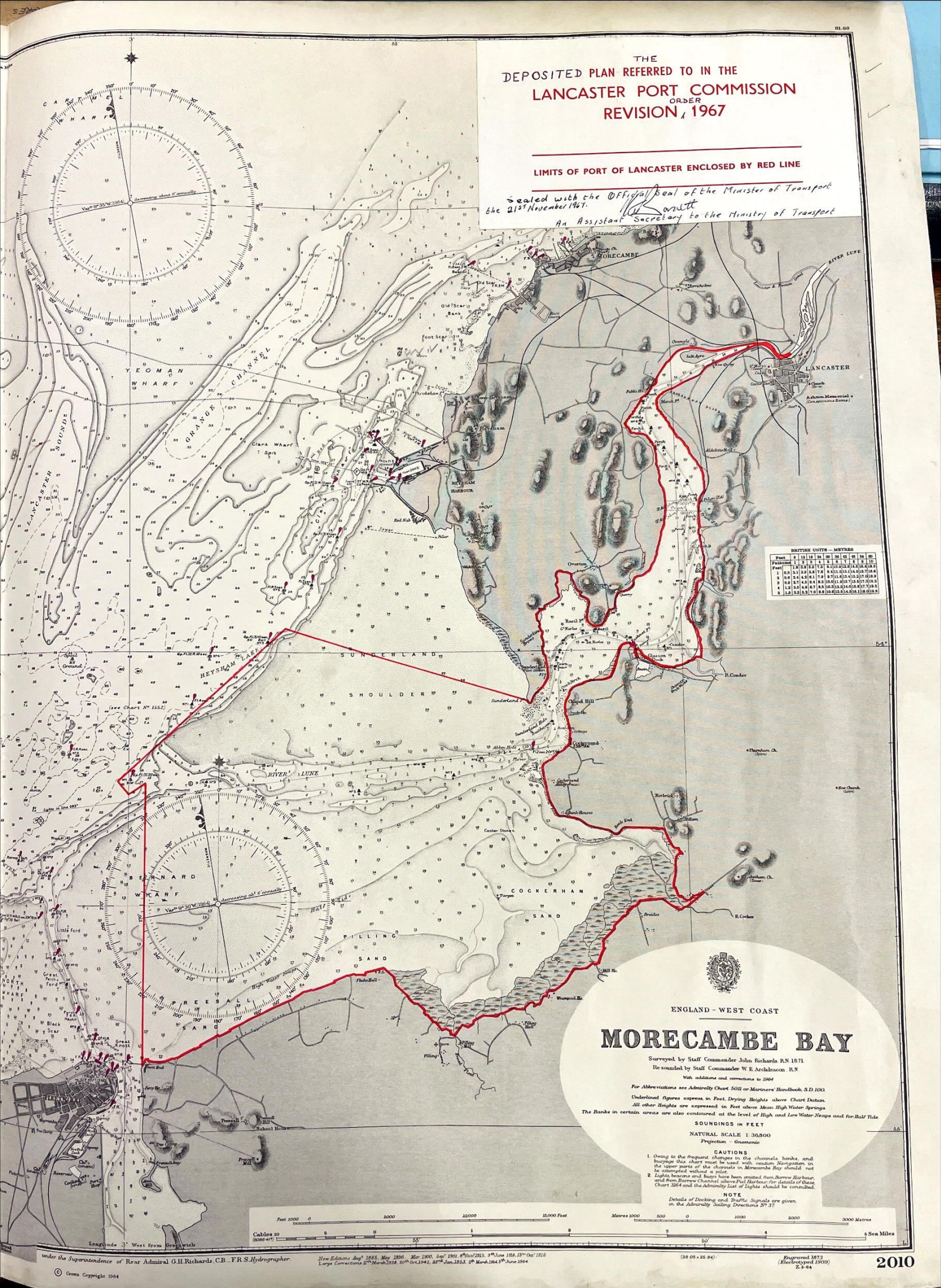
Tidal Information and Chart Datum

Place	Height above datum of soundings				Datum to which soundings are reduced and Remarks
	Mean Springs	Mean Neaps	Mean Springs	Mean Neaps	
Barrow Docks	1.4	1.1	1.4	1.1	14.81 ft below Ord. Datum (Newlyn)
Hayham	1.4	1.1	1.4	1.1	14.81 ft below Ord. Datum (Newlyn)
Wynne L. Ho.	1.4	1.1	1.4	1.1	14.81 ft below Ord. Datum (Newlyn)
Electroad	1.4	1.1	1.4	1.1	14.81 ft below Ord. Datum (Newlyn)

THE
DEPOSITED PLAN REFERRED TO IN THE
LANCASTER PORT COMMISSION
ORDER
REVISION 1967

LIMITS OF PORT OF LANCASTER ENCLOSED BY RED LINE

Sealed with the Official Seal of the Minister of Transport
the 21st November 1967.
[Signature]
An Assistant Secretary to the Ministry of Transport



BRITISH UNITS - METRES	
Feet	Metres
1	0.3
2	0.6
3	0.9
4	1.2
5	1.5
6	1.8
7	2.1
8	2.4
9	2.7
10	3.0
11	3.3
12	3.7
13	4.0
14	4.3
15	4.6
16	4.9
17	5.2
18	5.5
19	5.8
20	6.1
21	6.4
22	6.7
23	7.0
24	7.3
25	7.6
26	7.9
27	8.2
28	8.5
29	8.8
30	9.1
31	9.4
32	9.7
33	10.0
34	10.3
35	10.7
36	11.0
37	11.3
38	11.6
39	11.9
40	12.2
41	12.5
42	12.8
43	13.1
44	13.4
45	13.7
46	14.0
47	14.3
48	14.6
49	14.9
50	15.2
51	15.5
52	15.8
53	16.1
54	16.4
55	16.8
56	17.1
57	17.4
58	17.7
59	18.0
60	18.3
61	18.6
62	18.9
63	19.2
64	19.5
65	19.8
66	20.1
67	20.4
68	20.7
69	21.0
70	21.3
71	21.6
72	21.9
73	22.2
74	22.5
75	22.8
76	23.1
77	23.4
78	23.7
79	24.0
80	24.3
81	24.6
82	24.9
83	25.2
84	25.5
85	25.8
86	26.1
87	26.4
88	26.7
89	27.0
90	27.3
91	27.6
92	27.9
93	28.2
94	28.5
95	28.8
96	29.1
97	29.4
98	29.7
99	30.0
100	30.3

ENGLAND - WEST COAST

MORECAMBE BAY

Surveyed by Staff Commander John Richards R.N. 1871
 Resounded by Staff Commander W.E. Archibald R.N.
 With additions and corrections to 1964

For Abbreviations see Admiralty Chart 5011 or Mariners' Handbook, S.D. 100

Underlined figures express, in Feet, Drying Heights above Chart Datum.
 All other Heights are expressed in Feet above Mean High Water Springs.
 The Banks in certain areas are also contoured at the level of High and Low Water-Neaps and at Half-Tide.

SOUNDINGS IN FEET

NATURAL SCALE 1:30,000

Projection - Gnomonic

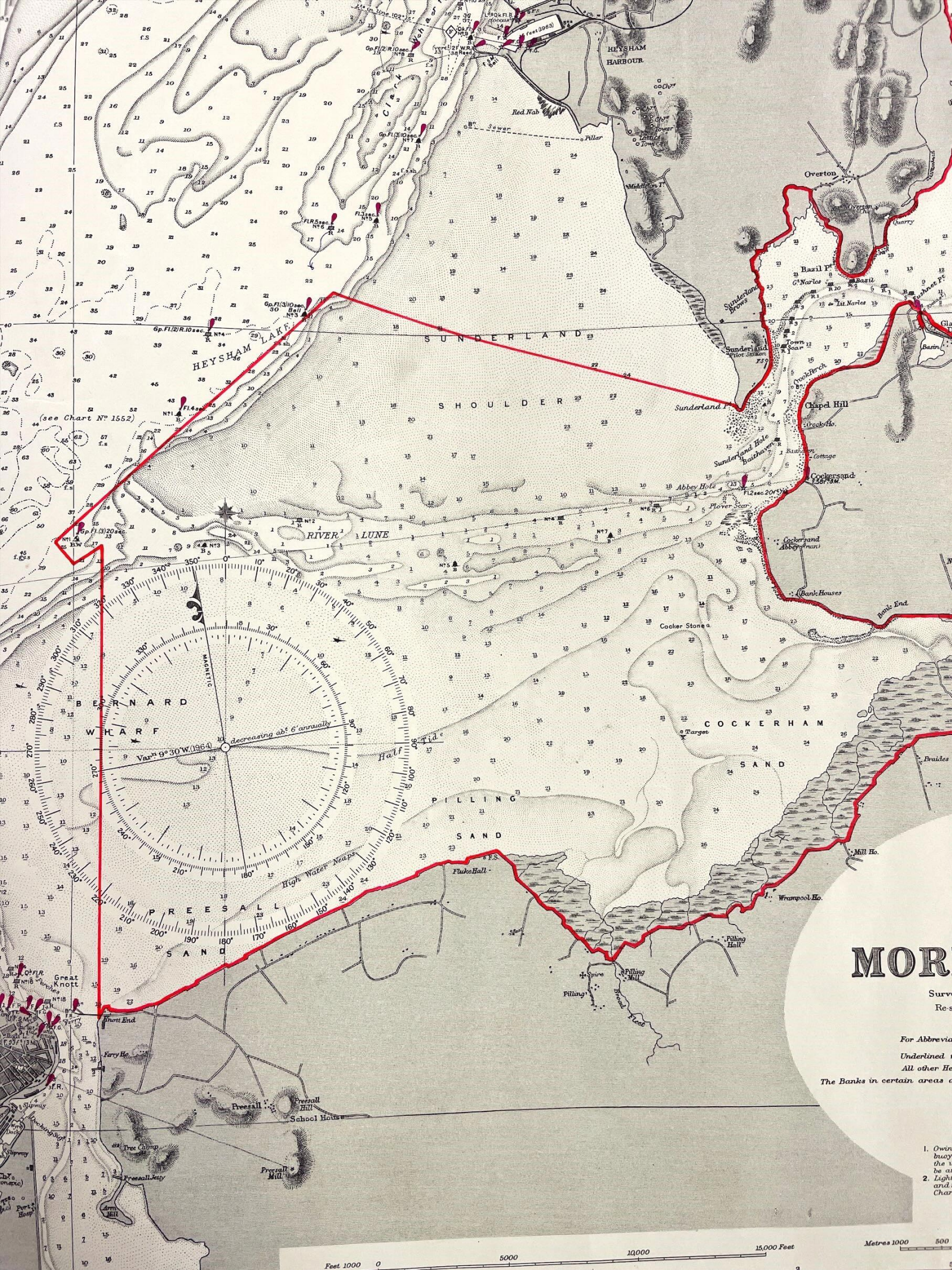
CAUTIONS

1. Owing to the frequent changes in the channels, banks, and buoyage this chart must be used with caution. Navigators in the upper parts of the channels in Morecambe Bay should not be deterred without a pilot.
2. Lights buoys and beacons have been omitted from Arrow Harbour, and from Burrow Channel above Peel Harbour; for details of these Chart 3364 and the Admiralty List of Lights should be consulted.

NOTE

Details of Docking and Traffic Signals are given in the Admiralty Sailing Directions N° 37





MOR

Surv
Res

For Abbrevia
Underlined
All other He
The Banks in certain areas o

1. Own
2. Light

Sealed the 21st November 1967. An Assistant Secretary to the Ministry of Transport



BRITISH UNITS - METRES

Feet	6	12	18	24	30	36	42	48	54	60
Fathoms	1	2	3	4	5	6	7	8	9	10
Feet	1.8	3.6	5.5	7.3	9.1	10.9	12.8	14.6	16.4	18.3
1	0.3	2.1	3.9	5.8	7.6	9.4	11.3	13.1	14.9	16.7
2	0.6	2.4	4.2	6.1	7.9	9.7	11.6	13.4	15.2	17.0
3	0.9	2.7	4.5	6.4	8.2	10.0	11.9	13.7	15.5	17.3
4	1.2	3.0	4.9	6.7	8.5	10.3	12.2	14.0	15.8	17.6
5	1.5	3.3	5.2	7.0	8.8	10.6	12.5	14.3	16.1	17.9

54°