

Overseas Trade Statistics (OTS): Revisions to Data January 2010

Following routine quality assurance and checking procedures, Trade Statistics has identified some errors where traders had declared incorrectly in a commodity code or country.

Given the scale and the impact of the changes on trade statistics, HMRC have revised the trade figures for 2007 and 2008. These revisions have been released today in line with the UK Statistical Authority Code of Practice for Official Statistics and the HMRC Trade Statistics Revision Policy.

The revisions, made for each affected month, are:

- Mineral fuels, mineral oils and products, Non-EU imports
 - £41.5 million reallocated for country of origin, 2008.
- Wood and articles of wood, EU arrivals
 - £1.4 million reallocated within Chapter, 2007.
 - £0.8 million reallocated within Chapter and for country of dispatch, 2008.
- Dairy produce, EU arrivals
 - 8.4 million Kg decrease within Chapter, 2008.
- Pharmaceutical Products, EU arrivals
 - £6.1 million reallocated for country of dispatch, 2007.
- Copper and articles thereof, EU arrivals and non EU imports
 - £27.8 million reallocated for country of dispatch, 2007.

(See Annex for commodity code details).

The revisions do not affect the total trade value figures for 2007 or 2008. All changes for value of trade are reallocations between commodity codes and/or countries (both EU and non EU countries). There are however, some changes to the total trade figures for both net mass and supplementary units.

The Revisions

Revisions are being made to the value data for the commodities listed below for the relevant months and, where appropriate, to the associated net mass and the supplementary unit data. For the revision for Dairy Produce only the net mass figure needed to be revised.

Mineral fuels, mineral oils and products Revision 2008

This revision involves Non-EU imports for country of origin being incorrectly declared by a trader in 2008 under commodity code 27090090 (Petroleum oils and oils obtained from bituminous minerals, crude; other). This import should have been declared under country of origin Azerbaijan instead of Turkey.

Therefore, for the commodity code 27090090, £41.5 million of Non-EU imports is transferred from Turkey to Azerbaijan as the country of origin for the year 2008.

For the OTS data published on the uktradeinfo web-site and in the paper publications details of imports are given according to the country of dispatch however country of origin is part of the larger OTS National Statistics data set.

Wood and articles of wood Revision 2007

This revision involves EU arrivals for 2007 being incorrectly assigned to commodity code 44079998 between March 2007 and July 2007. These EU arrivals should have been declared under commodity code 44071098.

The effect of this revision is to move £1.4 million of EU arrivals trade from the commodity code 44079998 to commodity code 44071098. Consequently there is a reallocation between the two commodity codes for net mass of approximately 5,300 tonnes and for supplementary unit of approximately 9,700 cubic metres.

In addition there is a revision to the published supplementary unit for commodity code 44079998 which has been decreased by approximately 79,000 cubic metres.

Tables 1 and 2 show the published and revised annual EU arrivals for value, and supplementary unit respectively for the affected commodity codes.

Table 1: Total value of EU arrivals for selected commodity codes, 2007

£ millions

Commodity Code	Published Value	Revised Value
44071098	147.0	148.5
44079998	20.3	18.9

Source: Overseas Trade Statistics, HM Revenue & Customs

Table 2: Total supplementary value of EU arrivals for selected commodity codes, 2007

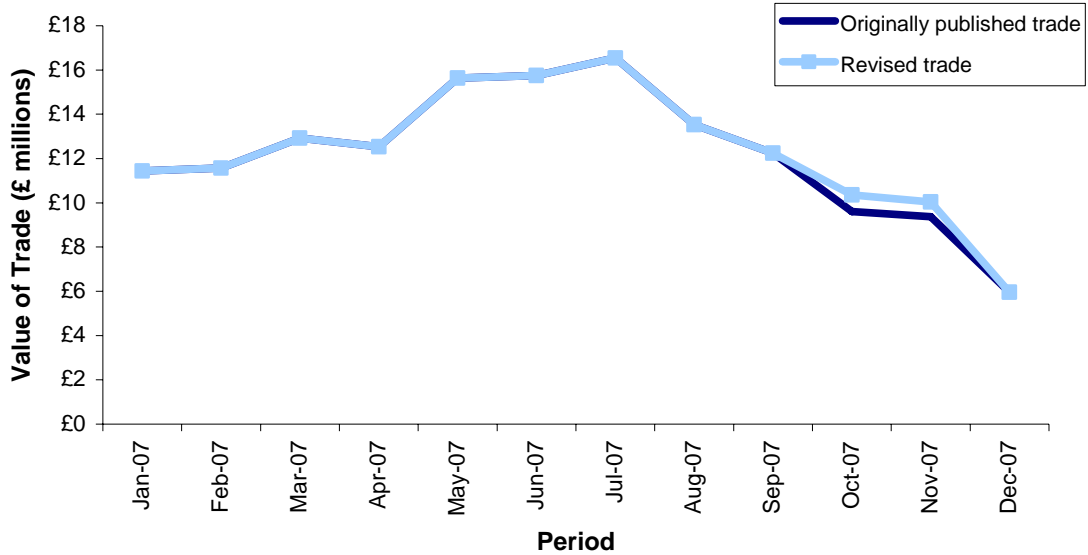
thousands cubic metre

Commodity Code	Published Value	Revised Value
44071098	2,043.8	2,053.6
44079998	281.2	192.0

Source: Overseas Trade Statistics, HM Revenue & Customs

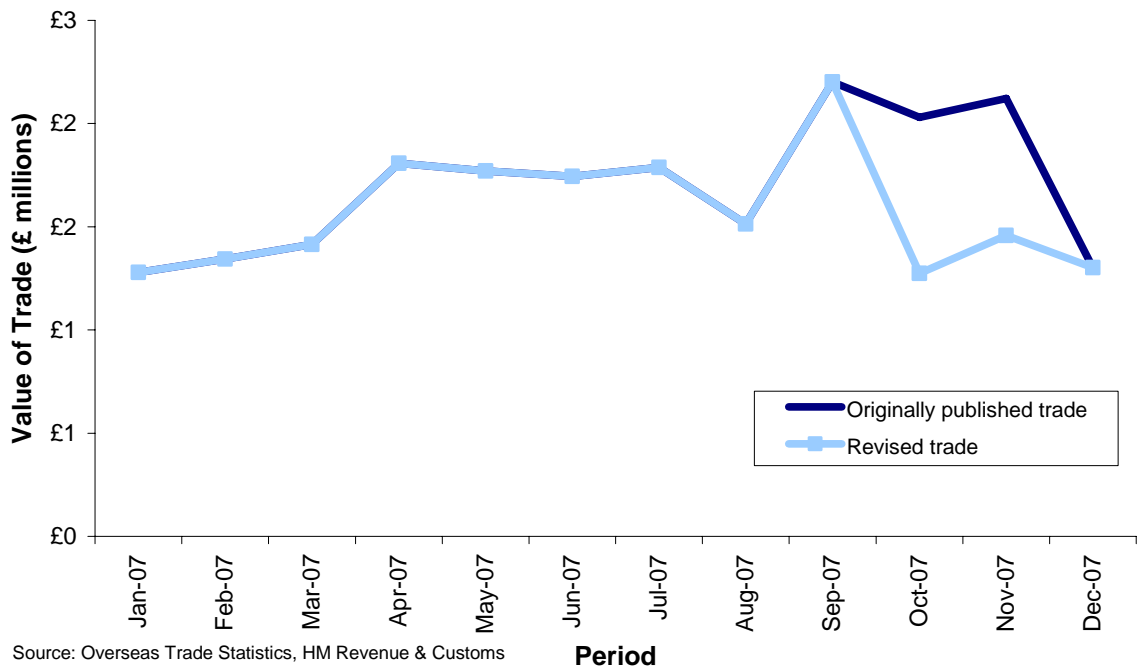
Figures 1 and 2 show the published trade data against the revised trade data by month for value for commodity code 44071098 and 44079998.

Figure 1: Value of monthly EU arrivals in commodity code 44071098, 2007



Source: Overseas Trade Statistics, HM Revenue & Customs

Figure 2: Value of monthly EU arrivals in commodity code 44079998, 2007



Source: Overseas Trade Statistics, HM Revenue & Customs

Figures 3 and 4 show the published trade data against the revised trade data by month for supplementary value for commodity code 44071098 and 44079998.

Figure 3: Supplementary unit value of monthly EU arrivals in commodity code 44071098, 2007

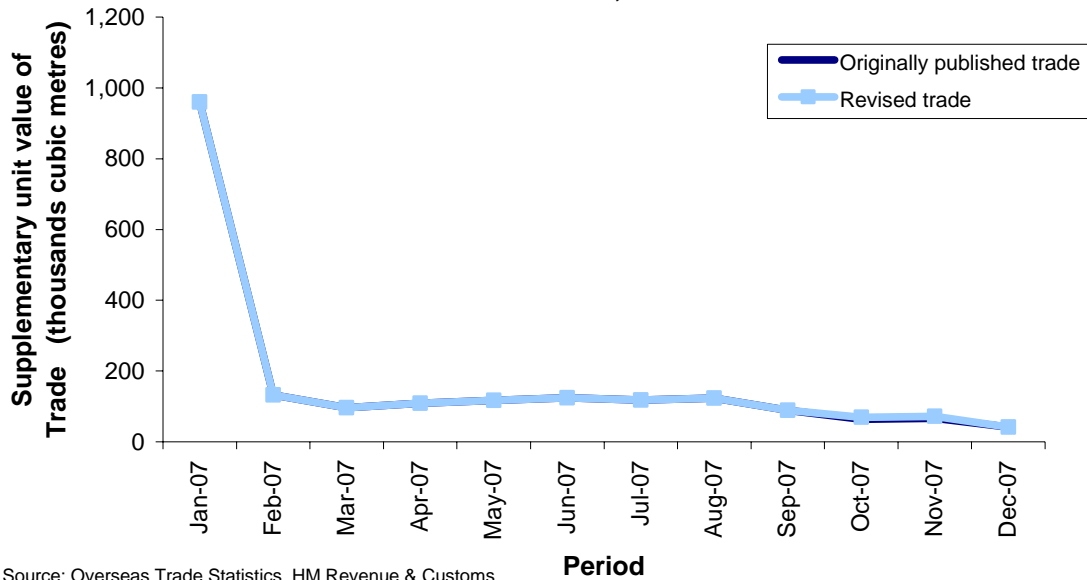
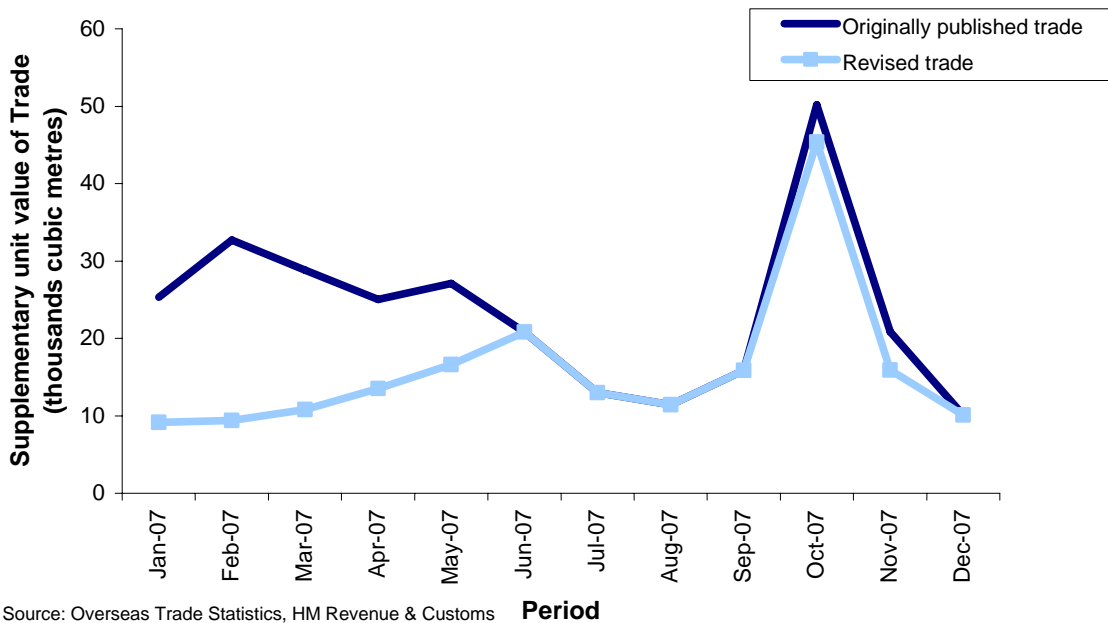


Figure 4: Supplementary unit value of monthly EU arrivals in commodity code 44079998, 2007



Wood and articles of wood Revision 2008

This revision involves EU arrivals trade which was all declared, incorrectly, under Sweden and misclassified under commodity code 44079998. These EU arrivals should have been declared under Sweden and Latvia within the following commodity codes 44079925, 44071091, 44071098, 44129490.

Table 3 shows the published and revised values for the affected commodity codes, and Figure 5, 6, 7, 8 and 9 shows the impact of the revision on the monthly trade figures for the selected commodity codes. The main impact is the removal of trade from commodity code 44079998. Redistribution of this to other commodity codes has a lesser impact on those codes.

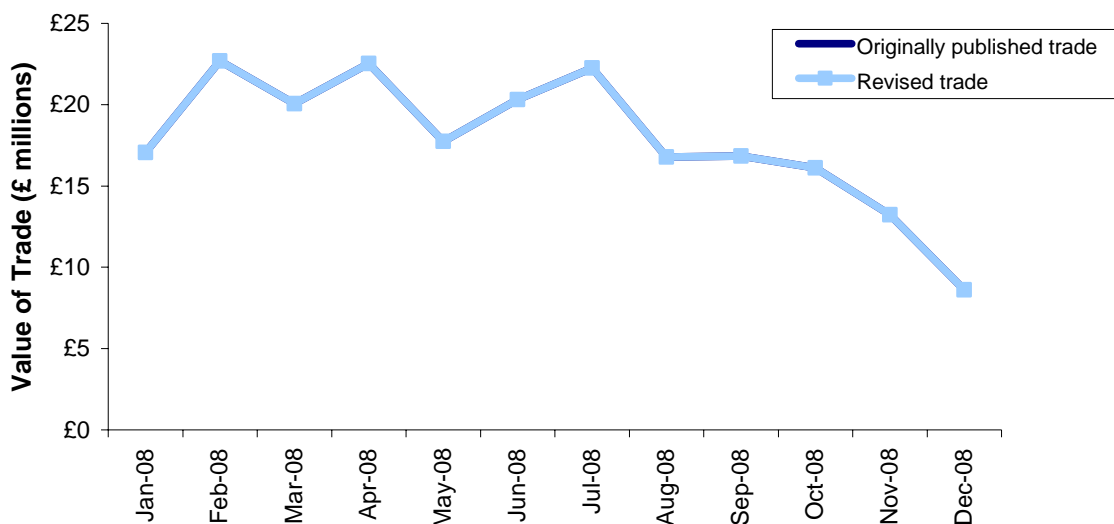
Table 3: Total value of EU arrivals for selected commodity codes, 2008

£ millions

Commodity Code	Published Value	Revised Value
44071091	214.2	214.2
44071098	98.9	99.5
44079925	2.0	2.1
44079998	16.9	16.1
44129490	1.3	1.4

Source: Overseas Trade Statistics, HM Revenue & Customs

Figure 5: Value of monthly EU arrivals in commodity code 44071091, 2008



Source: Overseas Trade Statistics, HM Revenue & Customs

Figure 6: Value of monthly EU arrivals in commodity code 44071098, 2008

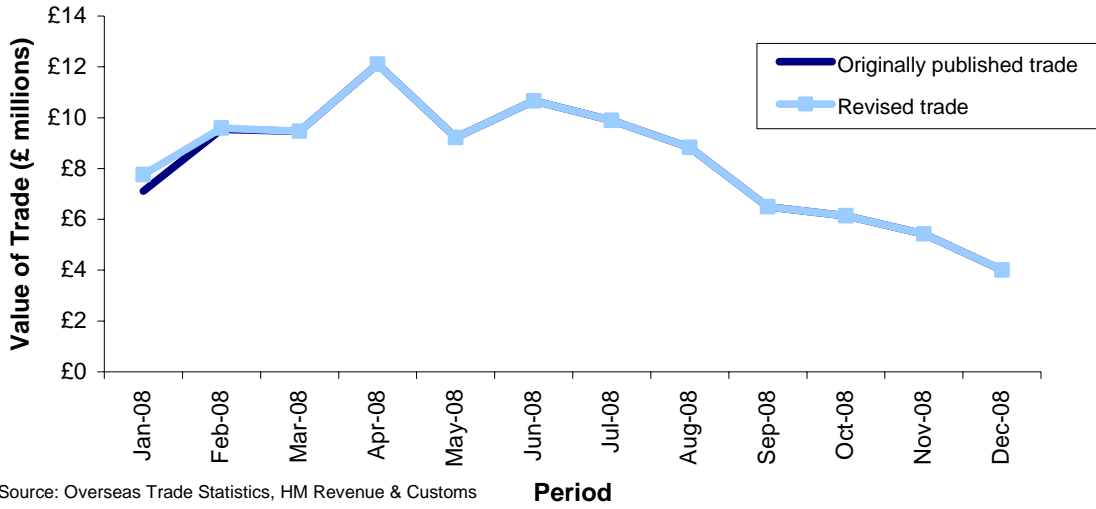


Figure 7: Value of monthly EU arrivals in commodity code 44079925, 2008

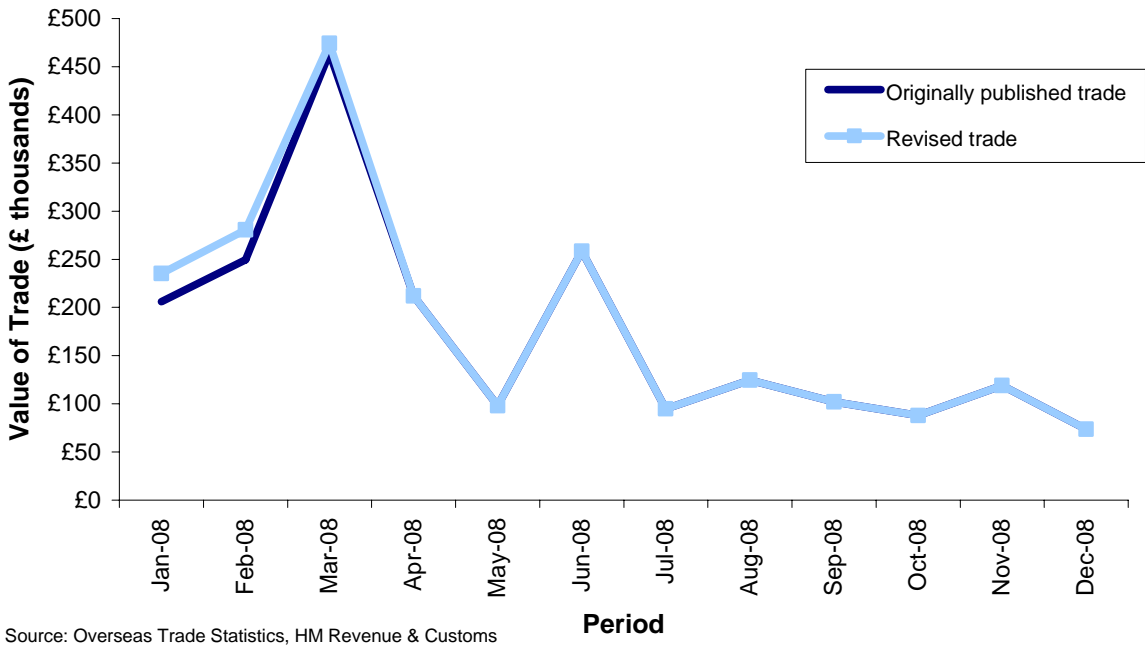
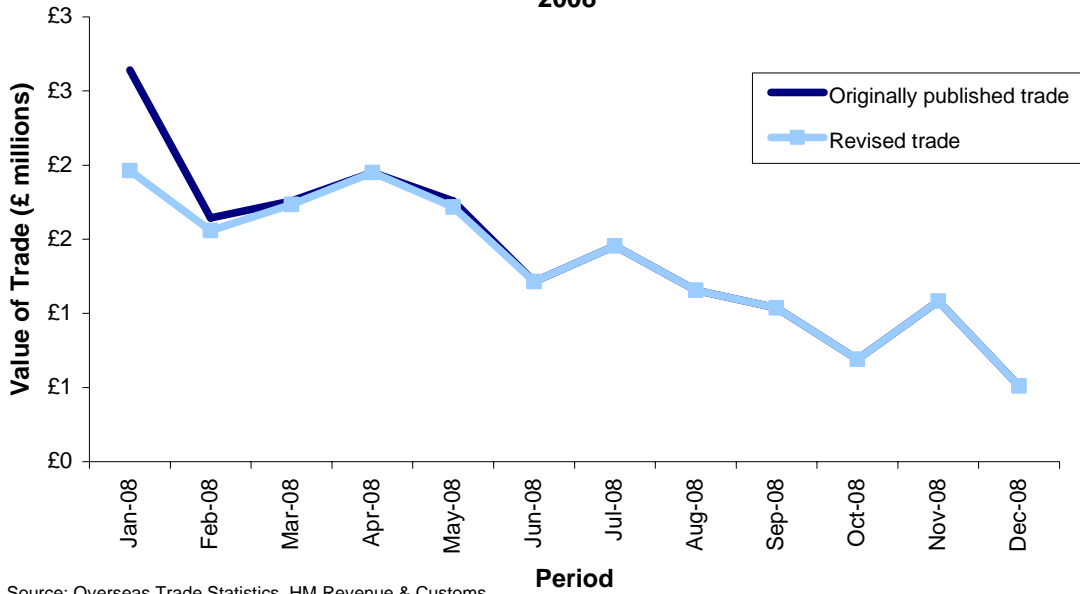
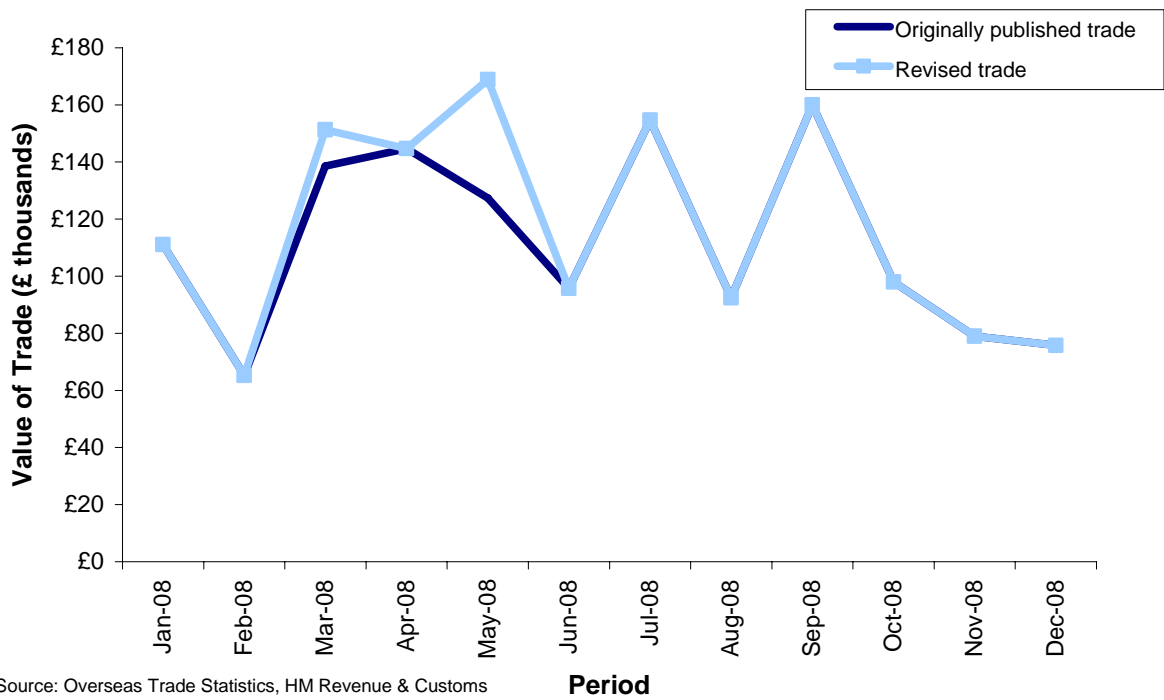


Figure 8: Value of monthly EU arrivals in commodity code 44079998, 2008



Source: Overseas Trade Statistics, HM Revenue & Customs

Figure 9: Value of monthly EU arrivals in commodity code 44129490, 2008



Source: Overseas Trade Statistics, HM Revenue & Customs

Table 4 shows the corresponding changes for supplementary unit.

Table 4: Total supplementary value of EU arrivals for selected commodity codes, 2008

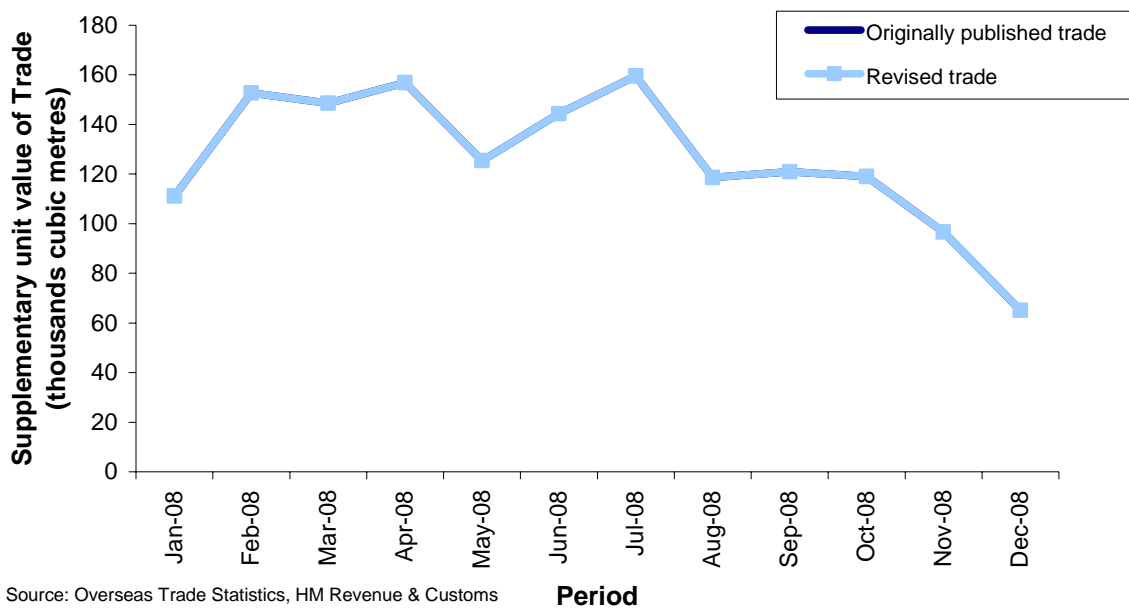
thousands cubic metre

Commodity Code	Published Value	Revised Value
44071091	1,518.9	1,519.0
44071098	733.5	739.0
44079925	12.0	12.2
44079998	279.6	273.5
44129490	13.7	14.0

Source: Overseas Trade Statistics, HM Revenue & Customs

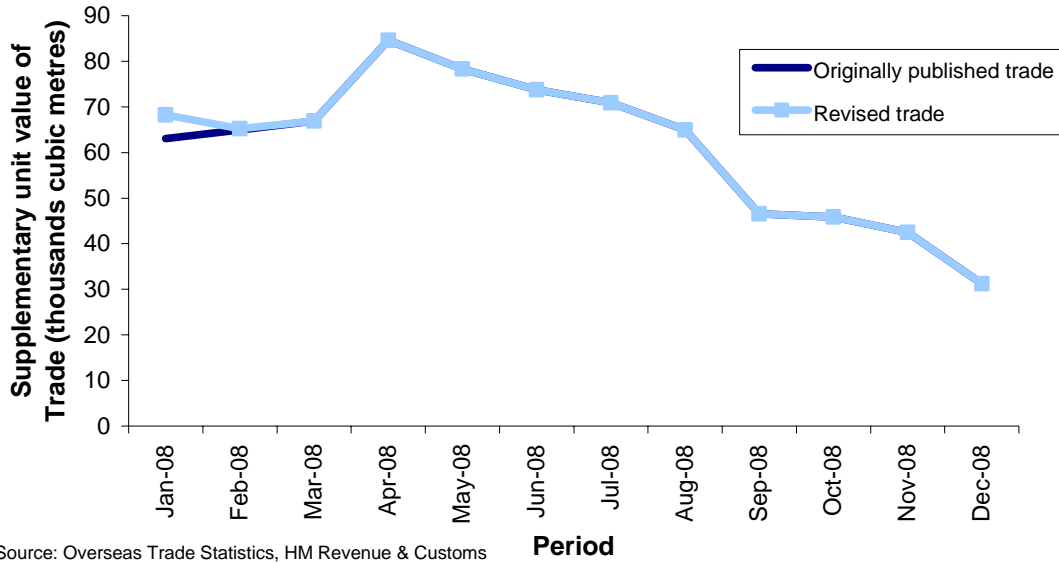
Figure 10, 11, 12, 13 and 14 shows the impact of the revision on the monthly trade figures for the selected commodity codes.

Figure 10: Supplementary unit value of monthly EU arrivals in commodity code 44071091, 2008



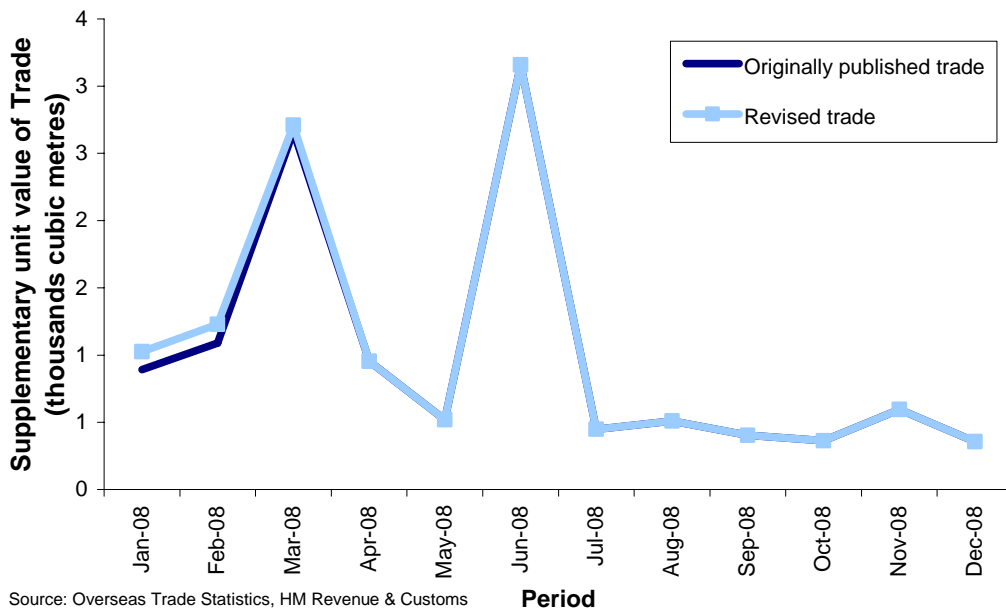
Source: Overseas Trade Statistics, HM Revenue & Customs

Figure 11: Supplementary unit value of monthly EU arrivals in commodity code 44071098, 2008



Source: Overseas Trade Statistics, HM Revenue & Customs

Figure 12: Supplementary unit value of monthly EU arrivals in commodity code 44079925, 2008



Source: Overseas Trade Statistics, HM Revenue & Customs

Figure 13: Supplementary unit value of monthly EU arrivals in commodity code 44079998, 2008

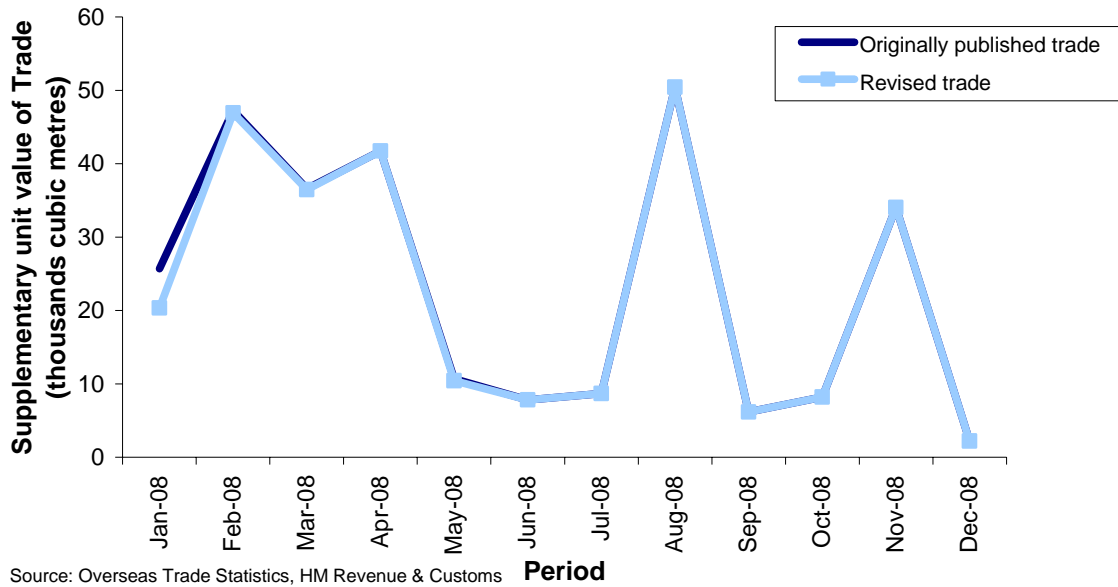
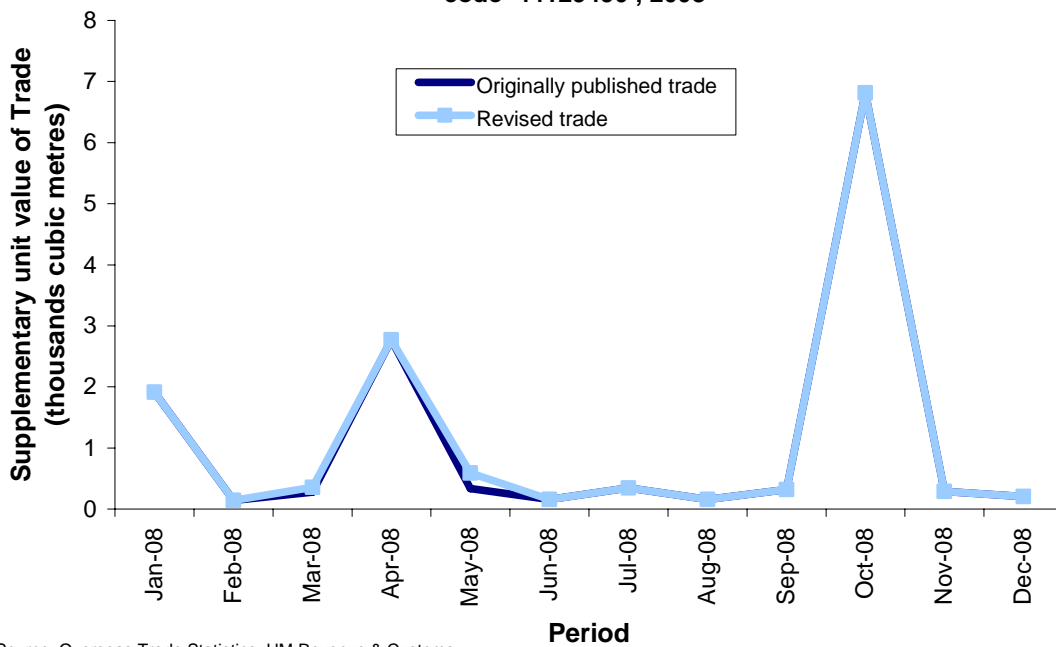


Figure 14: Supplementary unit value of monthly EU arrivals in commodity code 44129490, 2008



Dairy produce Revision 2008

This revision involves EU arrivals trade that were incorrectly declared by the trader for 2008 under commodity code 04070030 (Birds' eggs, in shell, fresh, preserved or cooked, of poultry, other). The original declaration overstated the net mass by approximately 8,400 tonnes.

Table 5 shows the published and revised annual EU arrivals data for net mass for the commodity code 04070030.

Table 5: Total net mass value of EU Arrivals for selected commodity codes, 2008

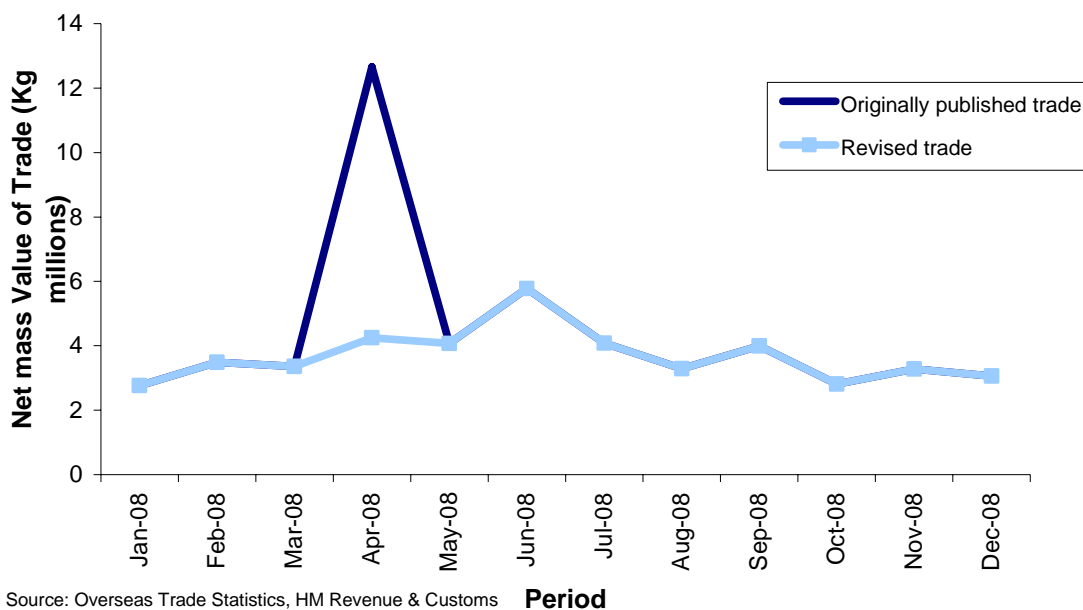
millions Kg

Commodity Code	Published Value	Revised Value
04070030	52.6	44.2

Source: Overseas Trade Statistics, HM Revenue & Customs

Figure 15 shows the impact of the revision on the monthly trade figures for the selected commodity code.

Figure 15: Net mass value of monthly EU arrivals in commodity code 04070030, 2008



Chemicals and Pharmaceutical Products Revision 2007

This revision involves EU arrivals that were incorrectly declared under Cyprus as country of dispatch between January 2007 and December 2007 for commodity codes 30043910 and 30049099. These EU arrivals should have been declared under Greece.

Table 6 and 7 shows the published and revised annual EU arrival data for the affected commodity codes and affected countries for 2007.

Table 6: Total value of EU arrivals from Cyprus for selected commodity codes, 2007

£ thousands

Commodity Code	Published Value	Revised Value
30043910	2,235.0	1,467.5
30049099	5,612.7	252.1

Source: Overseas Trade Statistics, HM Revenue & Customs

Table 7: Total value of EU arrivals from Greece for selected commodity codes, 2007

£ thousands

Commodity Code	Published Value	Revised Value
30043910	19,441.3	20,208.7
30049099	30,544.8	35,905.4

Source: Overseas Trade Statistics, HM Revenue & Customs

Figures 16 and 17 show the effect of revisions to monthly trade figures for the commodity code 30043910 for Cyprus and Greece respectively.

Figure 16: Value of monthly EU arrivals in commodity code 30043910 for Cyprus, 2007

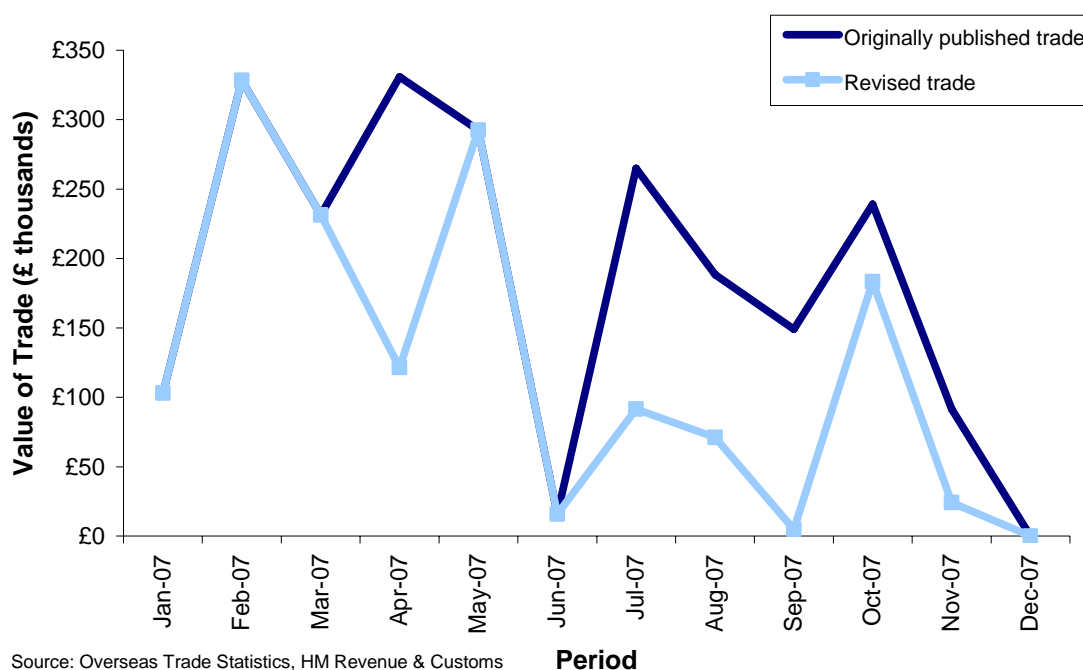
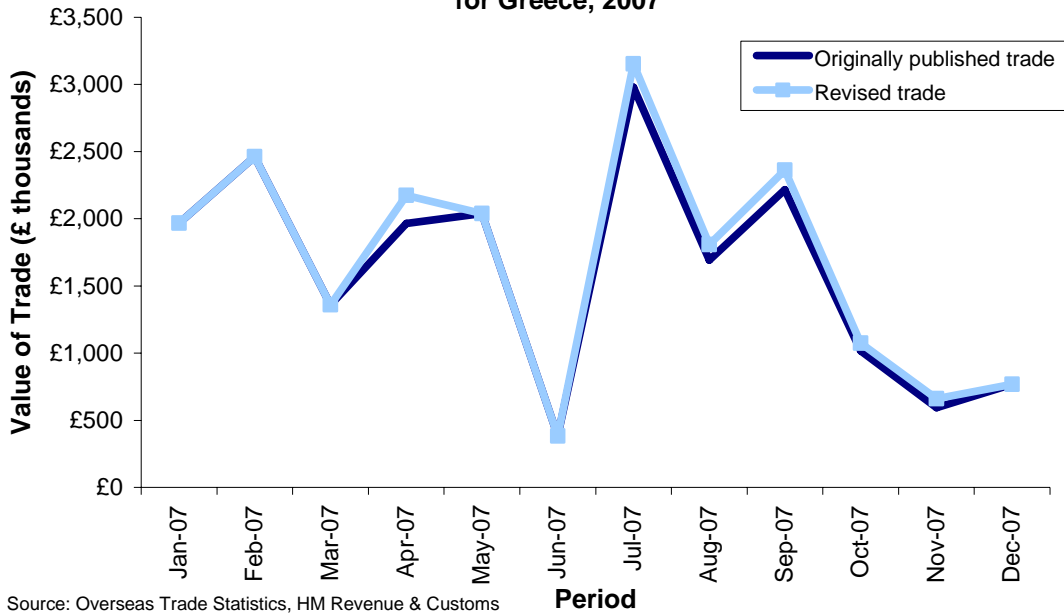


Figure 17: Value of monthly EU arrivals in commodity code 30043910 for Greece, 2007



Figures 18 and 19 show the effect of revisions to monthly trade figures for the commodity code 30049099 for Cyprus and Greece respectively.

Figure 18: Value of monthly EU arrivals in commodity code 30049099 for Cyprus, 2007

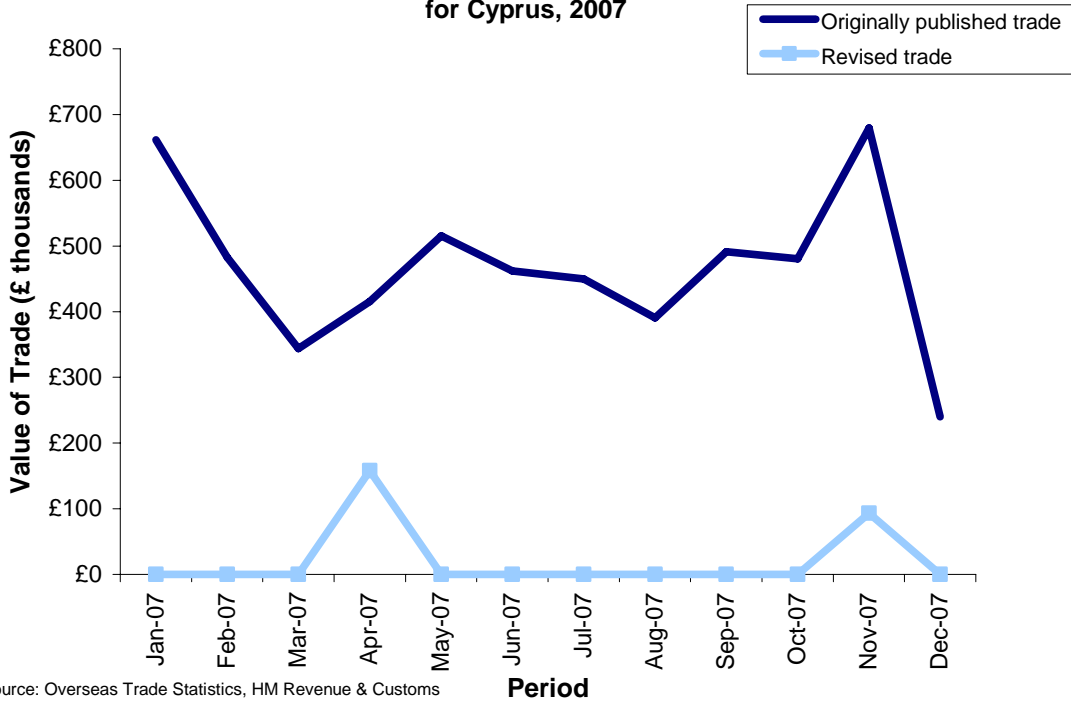
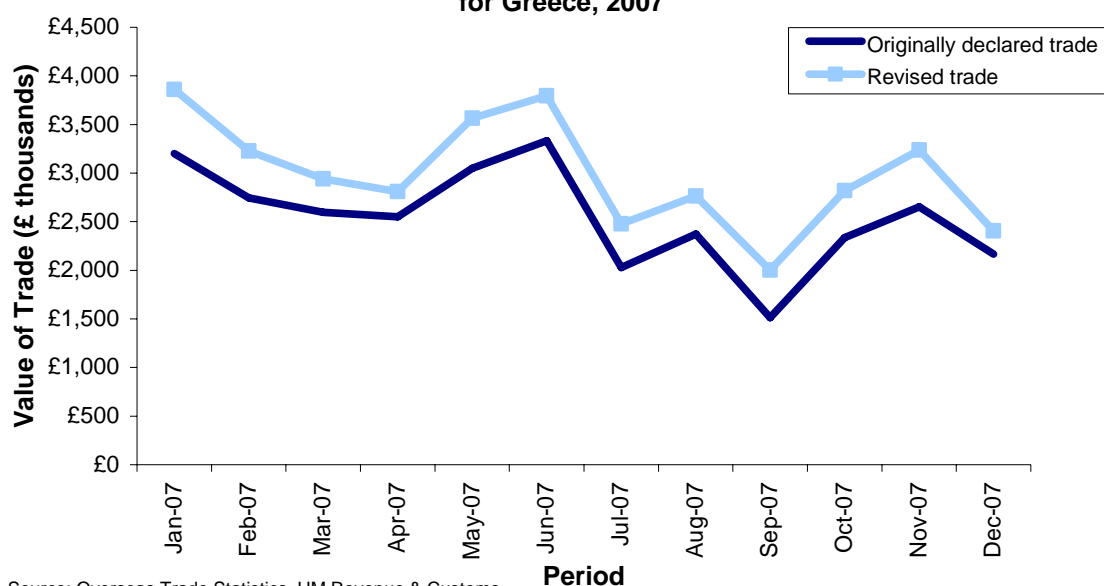


Figure 19: Value of monthly EU arrivals in commodity code 30049099 for Greece, 2007



Source: Overseas Trade Statistics, HM Revenue & Customs

Copper and articles thereof *Revision 2007*

This revision involves EU arrivals that were incorrectly declared under Cyprus as country of dispatch between January 2007 and December 2007 under commodity codes 74081100. These EU arrivals should have been declared under Non EU imports from Russia.

The effect of the revision is to reallocate £27.8 million of EU arrivals trade under the commodity code 74081100 from Cyprus to Non EU import trade from Russia for 2007.

Table 8 and 9 shows the revisions for the trade figures for the commodity code 74081100 for EU arrivals and Non EU imports.

Table 8: Value of EU arrivals for selected commodity codes, 2007

£ millions

Commodity Code	Published Value	Revised Value
74081100	322,762.5	294,957.5

Source: Overseas Trade Statistics, HM Revenue & Customs

Table 9: Value of Non EU imports for selected commodity codes, 2007

£ millions

Commodity Code	Published Value	Revised Value
74081100	103,110.5	130,915.5

Source: Overseas Trade Statistics, HM Revenue & Customs

Figure 20 and 21 shows the impact on the monthly trade figures for EU arrivals and Non EU imports for commodity code 74081100.

Figure 20: Value of monthly EU arrivals in commodity code 74081100, 2007

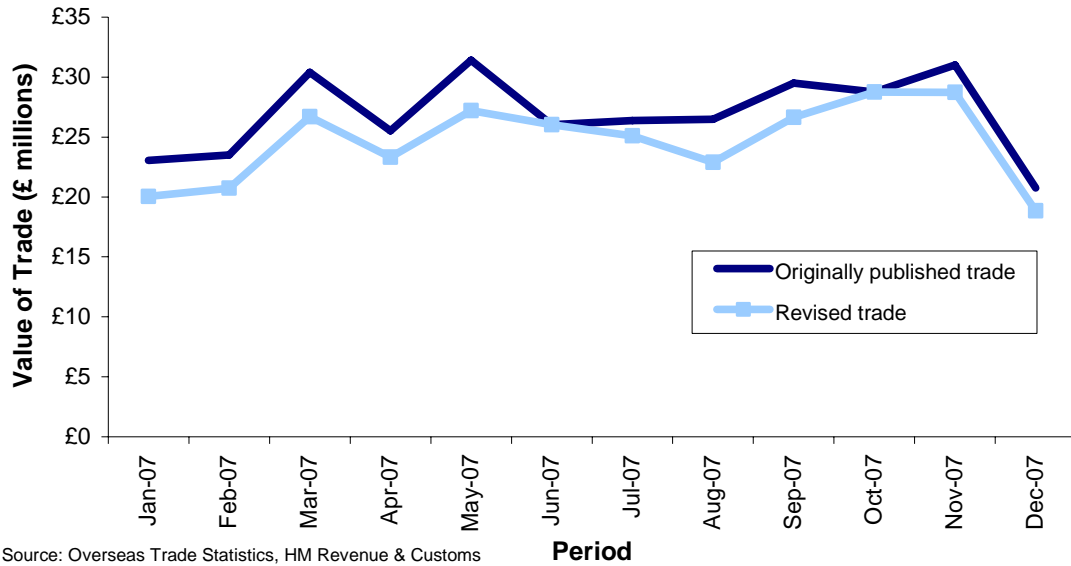
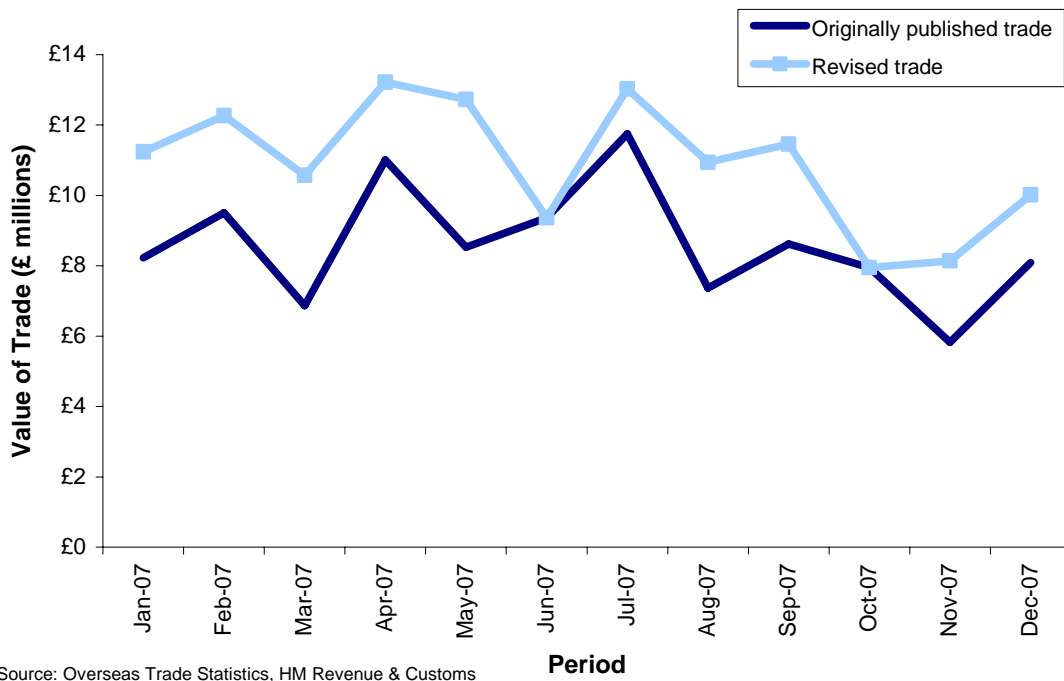


Figure 21: Value of monthly Non EU imports in commodity code 74081100, 2007



These revisions will be reflected in the interactive data tables available on the HMRC trade data website www.uktradeinfo.com.

For a full list of commodity codes and their description, please visit the ICN online at <http://www.uktradeinfo.com/index.cfm?task=intraicn>

Note: Some of these revisions will require corresponding revision to the published Regional Trade Statistics data. These changes will be made as soon as possible. Information about revisions to the Regional Trade Statistics will be published on the website, www.uktradeinfo.com

For more information, please contact:

Public enquires

Uktradeinfo Customer Services on uktradeinfo@hmrc.gsi.gov.uk

Tel: 01702 367485

Annex

Commodity

code	Description
04070030	Poultry eggs, in shell, fresh, preserved or cooked (excl. for hatching)
27090090	Petroleum oils and oils obtained from bituminous minerals, crude (excl. natural gas condensates)
30043910	Medicaments containing hormones or steroids used as hormones, but not antibiotics, put up in forms or packings for retail sale (excl. medicaments containing insulin or corticosteroid hormones, their derivatives or structural analogues)
30049099	Medicaments consisting of mixed or unmixed products for therapeutic or prophylactic purposes, put up in measured doses "incl. those in the form of transdermal administration" (excl. medicaments containing antibiotics, medicaments containing hormones or steroids used as hormones, but not containing antibiotics, medicaments containing alkaloids or derivatives thereof but not containing hormones or antibiotics, medicaments containing provitamins, vitamins or derivatives thereof used as vitamins, medicaments containing iodine or iodine compounds and those put up for retail sale)
44071091	Spruce "Picea abies Karst." or silver fir "Abies alba Mill.", sawn or chipped lengthwise, sliced or peeled, of a thickness of > 6 mm (excl. planed, sanded or end-jointed; boards for the manufacture of pencils; wood with a length of <= 125 mm and a thickness of < 12,5 mm)
44071098	Coniferous wood sawn or chipped lengthwise, sliced or peeled, of a thickness of > 6 mm (excl. planed or sanded, and spruce "Picea abies Karst.", silver fir "Abies alba Mill." and pine "Pinus sylvestris L.")
44079925	Wood sawn or cut lengthwise, sliced or peeled, planed, of a thickness of > 6 mm (excl. end-jointed; tropical wood specified in Subheading Note 1 to this chapter, coniferous wood, oak "Quercus spp.", beech "Fagus spp.", maple "Acer spp.", cherry "Prunus spp." and ash "Fraxinus spp.")
44079998	Wood, sawn or chipped lengthwise, sliced or peeled, of a thickness of > 6 mm (excl. planed, sanded or end-jointed, and tropical wood, coniferous wood, oak "Quercus spp.", beech "Fagus spp.", maple "Acer spp.", cherry "Prunus spp.", ash "Fraxinus spp." and poplar)
44129490	Laminated wood as blockboard, laminboard or battenboard (excl. of bamboo, such with at least one outer ply of non-coniferous wood, plywood consisting solely of sheets of wood <= 6 mm thick, sheets of compressed wood, cellular wood panels, inlaid wood and sheets identifiable as furniture components)
74081100	Wire of refined copper, with a maximum cross-sectional dimension of > 6 mm