

HA HOUSE TYPES
(PLOTS)

2.02
(PLOTS 29, 68, 69, 70, 91, 92)

2.03NF
(PLOT 67)

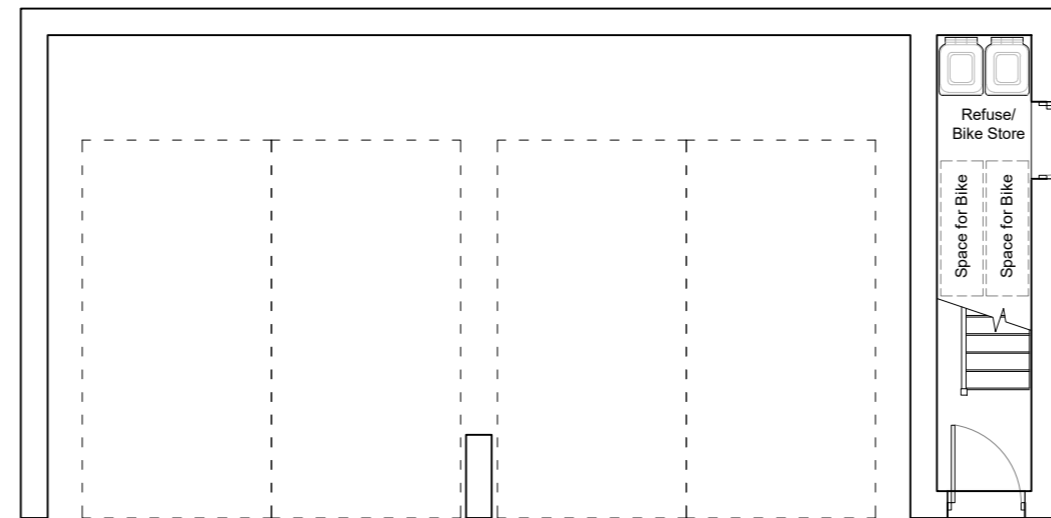
3.02
(PLOTS 88, 87)

HA House Types 2.02 /2.02



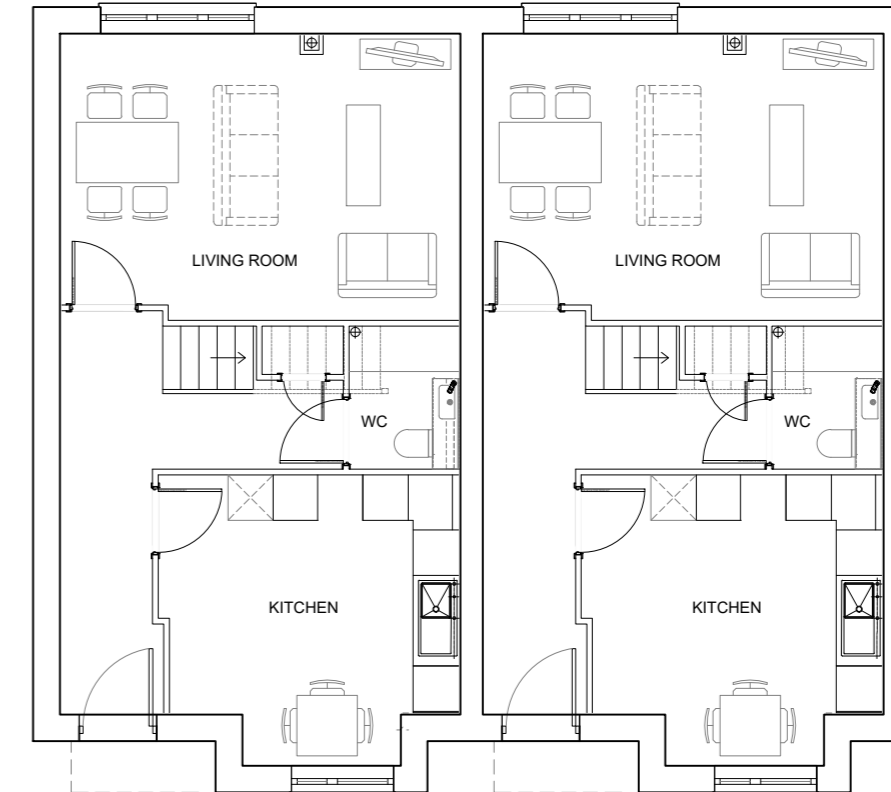
00 HA 2.02 Proposed Ground Floor Plan

HA House Types 2.03

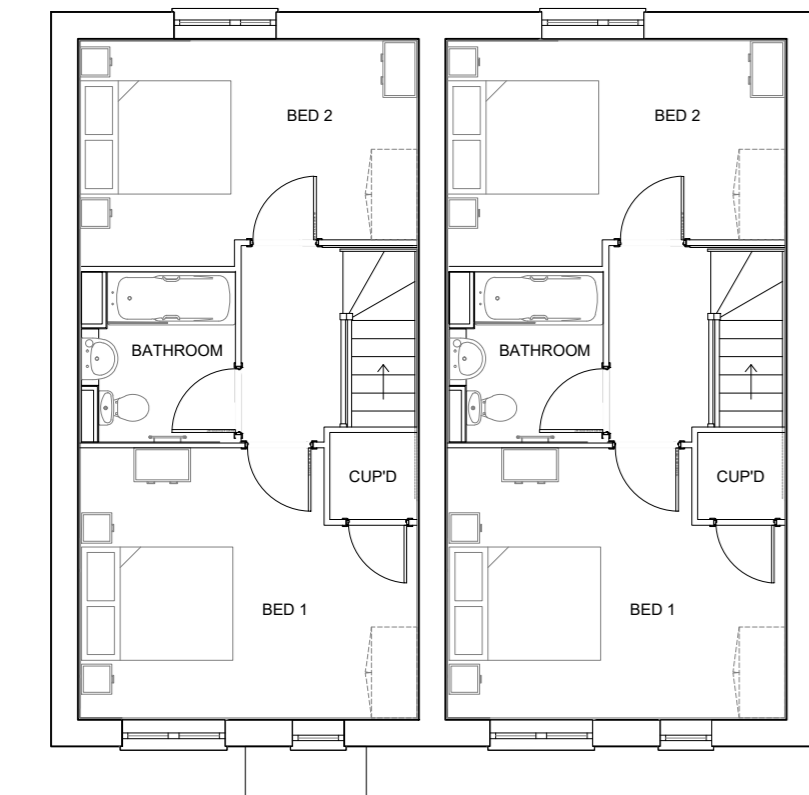


02 HA 2.03 Proposed Ground Floor Plan

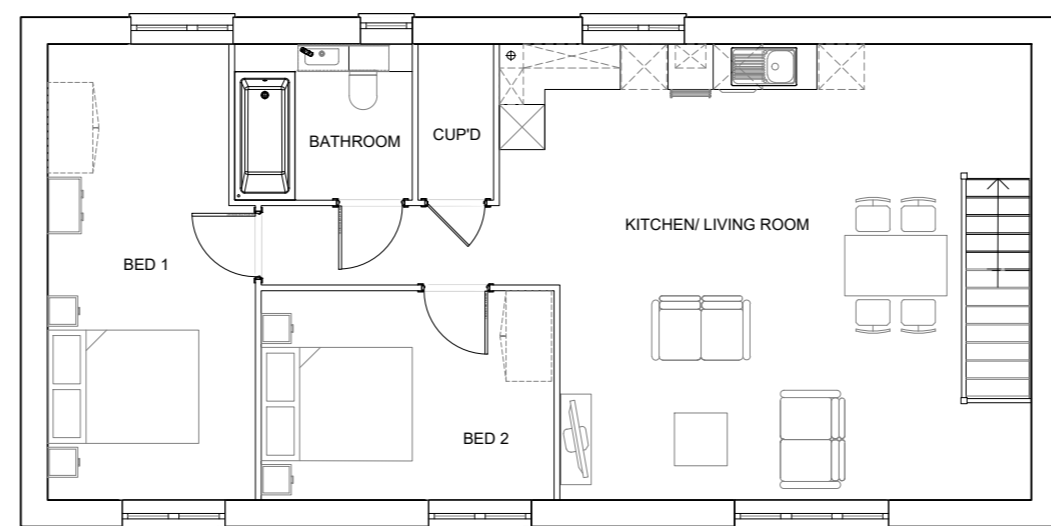
HA House Type 3.02/3.02



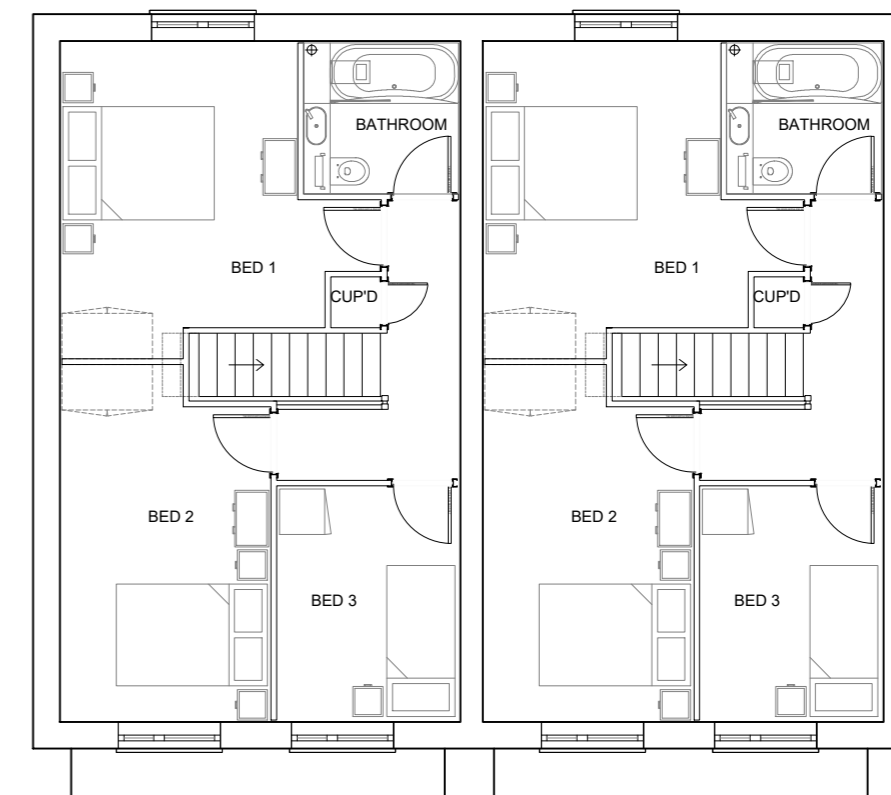
04 HA 3.02 Proposed Ground Floor Plan



01 HA 2.02 Proposed First Floor Plan



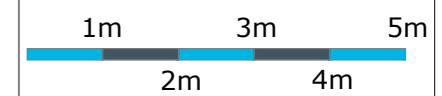
03 HA 2.03 Proposed First Floor Plan



05 HA 3.02 Proposed First Floor Plan

Rev

01



PLANNING

Title
HA House Type Layouts (1 of 2)

Site
WH202C Bull Field

| Date | Drawn | Checked |
|-----------|-------|---------|
| June 2023 | HM | PMR |

Scale
1:100@A2

| Drawing No. | Rev |
|--------------|-----|
| WH202C_25_16 | - |



General Notes
This drawing is the property of Weston Homes Plc and is issued on the condition that it is not reproduced, disclosed or copied to any unauthorised person without written consent. Levels are in AOD unless otherwise stated. Dimensions are in millimeters unless otherwise stated. Weston Homes Plc must be informed of any drawing errors immediately in writing. This drawing is for planning purposes only.

© WESTON HOMES PLC

| Head Office | London Office |
|---|--|
| Weston Group Business Centre, Paranage Road, Takeley, Essex, CM22 8PU, T: 01279 873333 | 10 Portman Square, London, W1H 6AZ T: 0203 096 7238 |

www.weston-homes.com | email: info@weston-homes.com