

WH202C

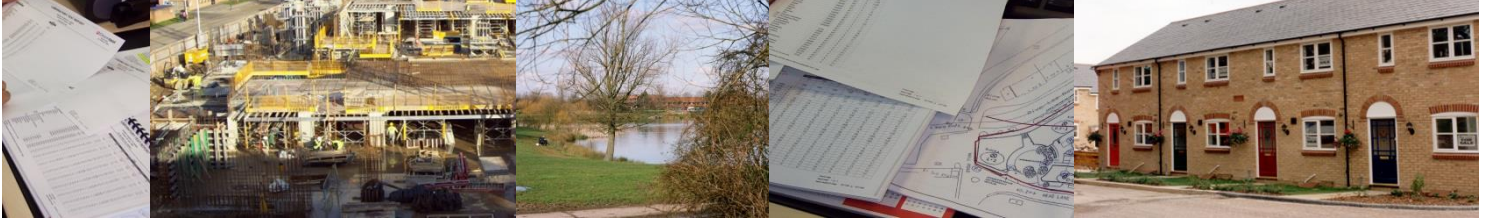
MARCH 2023

# Bull Field, Takeley

## Environmental Noise Assessment by Stansted Environmental Services

Prepared in support of the Section 62A Planning Application  
at Bull Field, Takeley.





# **ENVIRONMENTAL NOISE ASSESSMENT BULLS FIELD, WARISH HALL FARM, TAKELEY, ESSEX**

**Project Reference:**

ENV01-TAKE-068 – Bulls Field, Warish Hall Farm, Takeley

**Site Address:**

Bulls Field  
Warish Hall Farm  
Takeley  
Essex  
CM22 6PU

**Version Number:**

Version 1.0

**Report Date:**

31<sup>st</sup> March 2023

**Customer:**

Weston Homes Plc  
The Stansted Centre  
Parsonage Road  
Takeley  
Essex  
CM22 6PU

**Prepared By:**

Stansted Environmental Services Ltd  
The Stansted Centre  
Parsonage Road  
Takeley  
Essex  
CM22 6PU

This document has been prepared in accordance with the scope of Stansted Environmental Services Ltd appointment with its client and is subject to the terms of the appointment. It is addressed to and for the sole use and reliance of Stansted Environmental Services client.

Stansted Environmental Services Ltd accepts no liability for any use of this document other than by its client and only for the purposes, stated in the document, for which it was prepared and provided. No person other than the client may copy (in whole or part) use or rely on the contents of this document, without the prior written permission of Stansted Environmental Services Ltd.

Any advice, opinions, or recommendations within this document should be read and relied upon only in the context of the document as a whole.

The contents of this document are not to be construed as providing legal, business or tax advice or opinion

**DOCUMENT CONTROL**

**Publication Title** Environmental Noise Assessment  
Bulls Field, Warish Hall Farm - Takeley, CM22 6PU  
**Version** 1.0  
**Date** 31<sup>st</sup> March 2023  
**Project Reference** ENV001-TAKE-068

---

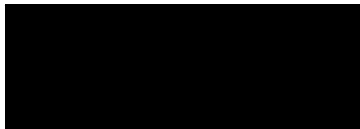
**Prepared by:**



**Hugo Evans** BA (Hons), TechIOA  
**Assistant Geo-Environmental Consultant**



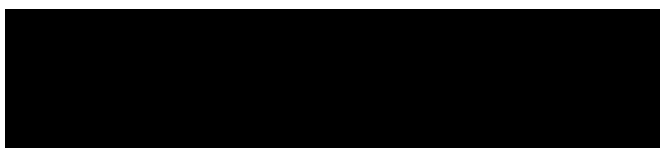
**Reviewed By:**



**Nick Long** MSc, BSc (Hons), IEng MIOA  
**Senior Acoustic Consultant**



**Approved By:**



**Silvio Petrasso** BSc (Hons), CMIOSH, MIOA, IMAPS, ACIEH  
**Managing Director of Stansted Environmental Services Ltd**



**Issue Status** Version 1.0  
**Date** 31<sup>st</sup> March 2023

---

## Contents

PROFESSIONAL CREDENTIALS.....	5
1. Introduction.....	7
2. Site Description .....	8
3. Standard Guidance .....	9
4. Environmental Noise Survey Methodology.....	16
5. Measurement Results.....	18
6. Design Criteria .....	20
7. Conclusions.....	22
8. Appendices .....	24

Appendix 1 – Glossary of Acoustics Terminology

Appendix 2 – Limitations to this Report

Appendix 3 – Stansted Airport noise contours

Appendix 4 – Proposed Site Plan

Appendix 5 – Noise Monitoring Data

## PROFESSIONAL CREDENTIALS

Stansted Environmental Services Limited (SES) is a standalone company within the Weston Group. SES provides a range of Health, Safety and Environmental Consultancy Services, specifically for the construction industry, working with developers, architects, planners and designers.

The consultants at Stansted Environmental Services specialise specifically in:-

Site Investigation and Contaminated Land  
Acoustics and Noise Control  
Construction Safety  
Energy and Sustainability

Silvio Petrasso is the Managing Director for Stansted Environmental Services Limited and has experience in dealing with acoustic assessments at Senior Management and Director Level, overseeing a number of large projects, to ensure that the end product is suitable for its intended use.

Silvio is a Chartered Health and Safety Practitioner with the Institute of Occupational Safety and Health (IOSH), a Corporate Member of the Institute of Acoustics (IOA), an Associate Member of the Chartered Institute of Environmental Health (CIEH) as well as an Incorporated Member of the Association for Project Safety (APS).

Nick holds a Master's degree qualification in Applied Acoustics and is a Corporate Member of the Institute of Acoustics (IOA). Additionally, Nick is an Incorporated Engineer (IEng) of the Engineering Council.

Hugo is an Assistant Geo-Environmental Consultant and has been working for Stansted Environmental Services Ltd for over 2 years. For the past 2 years, Hugo has been working with the environmental team at SES, assisting senior acoustic consultants with acoustic assessments.

Hugo holds a BA(Hons) (Second Class, Upper Division) degree in Geography from Canterbury Christ Church University and is currently studying for the IOA Diploma in Acoustics and Noise Control at London South Bank University. Additionally, Hugo holds the Certificate of Competence in Environmental Noise Measurement and is a Technician Member of the IOA.

This page is intentionally blank

## 1. Introduction

Stansted Environmental Services (SES) Ltd has been commissioned by Weston Homes Plc to prepare an Environmental Noise Assessment for the proposed development at Bulls Field, Warish Hall Farm, Takeley, CM22 6PU.

The purposes of this report are:

- To determine and assess prevailing ambient and maximum noise levels affecting the development due to nearby noise sources (e.g. road traffic, commercial premises operations, aircraft etc.);
- Based on the above, to present the internal noise levels to be achieved within the residential premises in accordance with relevant planning conditions, and
- To identify and recommend appropriate sound insulation requirements for the purposes of mitigating noise caused by prevailing noise sources such that internal noise levels are achieved.

The noise assessment has been undertaken in accordance with the most up-to-date planning guidance – in particular:

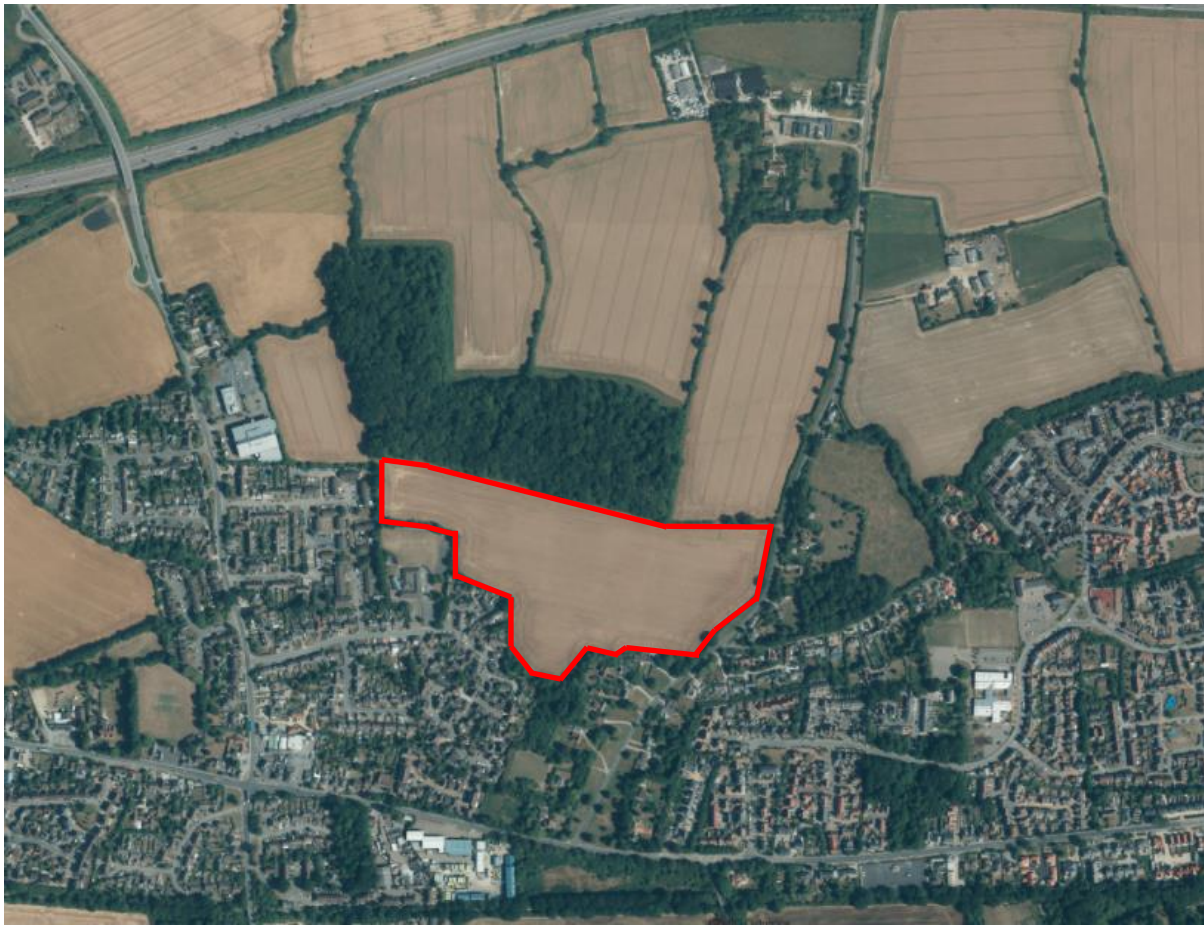
- The National Planning Policy Framework (NPPF),
- The WHO Guidelines for Community Noise and
- BS8233:2014 Guidance on sound insulation and noise reduction for buildings
- ProPG: Planning and Noise – Professional Practice Guidance on Planning & Noise – New Residential Development, May 2017.
- Aviation Policy Framework.

This report provides details of the noise survey, including measurement results, and provides recommendations.



## 2. Site Description

An aerial view of the site in its current use is shown in **Figure 1**.



**Figure 1 Aerial view of the site – Bulls Field, Warish Hall Farm – Takeley, CM22 6PU**

Bulls Field, Warish Hall Farm (hereafter referred to as ‘the site’) will consist of residential dwellings within the red boundary shown in **Figure 1**. The site is surrounded by existing residential premises to the South and East along Smiths Green. To the West lies further existing residential premises as well as Roseacres Primary School which immediately surrounds part of the site’s Western boundary. To the North, the site is surrounded by ancient woodland and farmland. The dominant noise sources present at the site were noted to be road traffic noise from Smiths Green to the East and noise emanating from Roseacres Primary School to the West. Further afield, road traffic noise from the A120 situated north of the site, Dunmow Road (B1256) to the south and Parsonage Road to the West were noted as other sources of environmental noise. In addition, aircraft noise from Stansted Airport was noted as another source of environmental noise, however, its impact upon the overall environmental noise levels at the survey site was negligible.

### 3. Standard Guidance

The noise assessment has been undertaken in accordance with the most up-to-date planning guidance – in particular:

- The National Planning Policy Framework (NPPF),
- Noise Policy Statement for England (NSPE)
- BS8233:2014 Guidance on sound insulation and noise reduction for buildings
- The WHO Guidelines for Community Noise and
- ProPG: Planning and Noise – Professional Practice Guidance on Planning & Noise – New Residential Development, May 2017

#### 3.1 The National Planning Policy Framework (NPPF), 2019

The National Planning Policy Framework was published in March 2012 and revised in July 2018 and February 2019. In respect of noise, the document states, in section 15, paragraph 170 that:

*“Planning policies and decisions should contribute to and enhance the natural and local environment by... preventing new and existing development from contributing to or being put at unacceptable risk from, or being adversely affected by unacceptable levels of ... noise pollution”.*

It goes on to advise in section 15, paragraph 180 that:

“Planning policies and decisions should also ensure that new development is appropriate for its location taking into account the likely effects (including cumulative effects) of pollution on health, living conditions and the natural environment, as well as the potential sensitivity of the site or the wider area to impacts that could arise from the development. In doing so they should:

- a) Mitigate and reduce to a minimum potential adverse impacts resulting from noise from new development – and avoid noise giving rise to significant adverse impacts on health and the quality of life<sup>60</sup>;*
- b) Identify and protect tranquil areas which have remained relatively undisturbed by noise and are prized for their recreational and amenity value for this reason; and*
- c) Limit the impact of light pollution from artificial light on local amenity, intrinsically dark landscapes and nature conservation.*

Paragraph 182 states “Planning policies and decisions should ensure that new development can be integrated effectively with existing businesses and community facilities (such as places of worship, pubs, music venues and sports clubs). Existing businesses and facilities should not have unreasonable restrictions placed on them as a result of development permitted after they were established. Where the operation of an existing business or community facility could have a significant adverse effect on new development (including changes of use) in its vicinity, the applicant (or ‘agent of change’) should be required to provide suitable mitigation before the development has been completed.

The NPPF revokes Planning Policy Guidance 24 (PPG 24) which was previously used to assess noise impacts of planning applications. PPG 24:

- Outlined the considerations to be taken into account in determining planning applications both for noise-sensitive developments and for those activities that will generate noise
- Introduced the concept of “Noise Exposure Categories” for residential development, encouraged their use and recommended appropriate levels for exposure to different sources of noise and
- Advised on the use of planning conditions to minimise the impact of noise

The NPPF indicates that the Noise Policy Statement for England (NPSE) should be used to define “significant adverse impacts”. A summary of the NPSE is provided below, and it is understood that the UK government is currently undertaking research to quantify the significant observed adverse effect levels for noise.

### 3.2 Noise Policy Statement for England (NPSE)

The NPSE was published in March 2010. The document seeks to clarify the underlying principles and aims in existing policy documents, legislation and guidance that relate to noise. It also sets out, in paragraph 1.6, the long term vision of Government noise policy:

*“Promote good health and a good quality of life through the effective management of noise within the context of Government policy on sustainable development”.*

The NPSE clarifies that noise should not be considered in isolation of the wider benefits of a scheme or development, and that the intention is to minimise noise and noise effects as far as is reasonably practicable having regard to the underlying principles of sustainable development.

The explanatory note of NPSE defines the terms used in the NPPF:

*“There are two established concepts from toxicology that are currently being applied to noise impacts, for example, by the World Health Organisation.*

*They are:*

*NOEL – No Observed Effect Level: This is the level below which no effect can be detected. In simple terms, below this level, there is no detectable effect on health and quality of life due to the noise.*

*LOAEL – Lowest Observed Adverse Effect Level: This is the level above which adverse effects on health and quality of life can be detected.*

*Extending these concepts for the purpose of this NPSE leads to the concept of a significant observed adverse effect level.*

*SOAEL – Significant Observed Adverse Effect Level: This is the level above which significant adverse effects on health and quality of life occur.”*

The NPSE does not provide a numerical value for the SOAEL, stating at paragraph 2.22:

*“It is not possible to have a single objective noise-based measure that defines SOAEL that is applicable to all sources of noise in all situations. Consequently, the SOAEL is likely to be different for different noise sources, for different receptors and at different times. It is acknowledged that further research is required to increase our understanding of what may constitute a significant adverse impact on health and quality of life from noise. However, not having specific SOAEL values in the*

*NPSE provides the necessary policy flexibility until further evidence and suitable guidance is available.”*

The NPPF does not quote figures for action, however BS8233:2014 is the most appropriate guidance document in relation to identifying target noise level criteria. Achieving the LOAEL requires “all reasonable steps” to be taken in terms of mitigation.

### 3.3 Possible Options for the identification of SOAEL and LOAEL in support of the NPSE

In the absence of any specific guidance in the NPSE relating the absolute levels of noise from different sources to the various defined effect levels, DEFRA commissioned AECOM to carry out research to identify the potential threshold levels for LOAEL and SOAEL to assist implementation of the NPSE. The resultant document ‘Possible Options for the identification of SOAEL and LOAEL in support of the NPSE’ aims to contribute to the further understanding of what may constitute a significant adverse impact of noise on health and quality of life.

Guidance has been determined for different noise sources, receptors and at different periods of the day and night. The noise sources analysed include transportation (air, road and rail), neighbour, entertainment and industrial noise. The effects considered were: annoyance; stress; sleep; cardiovascular disease; cognitive mental health; quality of life and wellbeing; impacts on performance; and cognitive mental health.

The approach adopted for deriving possible LOAEL and SOAEL values for transportation noise sources is based on exposure – response relationships which are discussed in the report as having sufficient evidence to provide identifiable link between the level of noise and a given effect. The report caveats that these relationships refer to community responses over the long term and might not be relevant for assessing either noise impacts on individuals or the short term responses where there is an abrupt change in noise exposure.

A summary of the recommendations of the report are contained within Table 1.1 of the report, of which the sections relevant to this assessment are reproduced in **Table 1**.

**Table 1 Summary outcomes of AECOM report**

Source/Effect	Annoyance/Stress, dB		Sleep disturbance, dB		Cardiovascular disease, dB	
	$L_{Aeq,16hr}$		$L_{night}$		$L_{Aeq,16hr}$	
	LOAEL	SOAEL	LOAEL	SOAEL	LOAEL	SOAEL
Road	53-59 (56)	64-68(66)	43-52(46)	51-64(56)	58	67
Air	50-54 (52)	58-62(60)	40-49(41)	47-60(53)	NA	NA

Note: numbers shown in parentheses indicate mid points of the range, ‘NA’ indicates that no evidence is available for this effect.

### 3.4 British Standard BS8233:2014: Sound Insulation and Noise Reduction for Buildings – Code of Practice

The scope of this Standard is to provide recommendations for the control of noise in and around buildings. It suggests appropriate criteria and limits for different situations, which are primarily intended to guide the design of new or refurbished buildings undergoing a change of use, rather than to assess the effect of changes in the external noise climate.

The Standard suggests suitable internal noise levels within different types of buildings, including dwellings, and these are repeated in **Table 2**.

**Table 2 Recommended internal noise levels  $L_{Aeq,T}$  dB**

Activity	Location	07:00 to 23:00	23:00 to 07:00
Resting	Living room	35dB $L_{Aeq}$ , 16 hour	---
Dining	Dining room area	40dB $L_{Aeq}$ , 16 hour	---
Sleeping	Bedroom	35dB $L_{Aeq}$ , 16 hour	30dB $L_{Aeq}$ , 8 hour

These internal levels are based on annual average data and do not have to be achieved in all circumstances. It is normal to exclude occasional events, such as fireworks night or New Year's Eve.

The standard states that where development is considered necessary or desirable, the internal target levels may be relaxed by up to 5 dB and reasonable internal conditions still achieved.

For external amenity areas, such as gardens and patios, the standard states:

*'it is desirable that the external noise level does not exceed 50 dB  $L_{Aeq,T}$  with an upper guideline value of 55 dB  $L_{Aeq,T}$  which would be acceptable in noisier environments. However, it is also recognized that these guideline values are not achievable in all circumstances where development might be desirable. In higher noise areas, such as city centres or urban areas adjoining the strategic transport network, a compromise between elevated noise levels and other factors, such as the convenience of living in these locations or making efficient use of land resources to ensure development needs can be met, might be warranted. In such a situation, development should be designed to achieve the lowest practicable levels in these external amenity spaces, but should not be prohibited.'*

Regarding individual noise events (for example, scheduled aircraft or passing trains) the standard highlights the likelihood of sleep disturbance. A guideline value may be set in terms of a SEL (Single Event Level) or  $L_{Amax,f}$ , depending on the character and number of events per night. Sporadic noise events could require separate values.

It is proposed a target value of 45dB $L_{Amax}$  should not be regularly exceeded in bedroom spaces during night periods.

### 3.5 World Health Organisation (WHO)1999; Guidelines for Community Noise

WHO 2009: *Guidelines for Community Noise* has established guideline values for community noise in specific environments, which are summarised below:

- Outdoor Living Area – Serious Annoyance 55 dB(A), 16 hours between 07:00 and 23:00
- Outdoor Living Area – Moderate Annoyance 50 dB(A), 16 hours between 07:00 and 23:00
- Indoor Speech Intelligibility – Moderate Annoyance 35 dB(A), 16 hours between 07:00 and 23:00
- Inside bedrooms night time sleep disturbance 30dB(A), 8 hours between 23:00 and 07:00
- Outside bedrooms, window open (outdoor values), sleep disturbance 45dB(A)

The WHO has issued a further document. "Night Noise Guidelines for Europe (2009)" and the following table details the effects of different levels of night noise on health.



**Table 3 WHO Exposure –Effects Relationship**

Average night noise levels over a year $L_{\text{night, outside}}$	Health Effects Observed in the Population
<b>Up to 30dB</b>	Although individual sensitivities exist, circumstances may differ, it appears that up to this level no substantial biological effects are observed. $L_{\text{night, outside}}$ of 30dB is equivalent to the no observed effect level (NOEL) for night noise.
<b>30 to 40dB</b>	A number of effects on sleep are observed from this range: body movements, awakening, self-reported sleep disturbances, arousals. The intensity of the effect depends on the nature of the source and the number of events. Vulnerable groups (for example, children, the chronically ill and the elderly) are more susceptible. However, even in the worst cases the effects seem modest. $L_{\text{night, outside}}$ of 40dB is equivalent to the lowest observed adverse effect level (LOAEL) for night noise.
<b>40 to 55dB</b>	Adverse health effects are observed among the exposed population. Many people have to adapt to their lives to cope with noise at night. Vulnerable groups are more severely affected.
<b>Above 55dB</b>	The situation is considered increasingly dangerous for public health. Adverse health effects occur frequently, a sizeable proportion of the population is highly annoyed and sleep-disturbed. There is evidence that the risk of cardiovascular disease increases.

Based on the exposure-effects relationship summarised in **Table 3**, the night noise guideline values are recommended for the protection of public health from night noise as follows:

- Night Noise guideline –  $L_{\text{night, outside}} = 40\text{dB}$
- Interim Target –  $L_{\text{night, outside}} = 55\text{dB}$

For the primary prevention of health effects related to night noise, the WHO (2009) recommends people should not be exposed to night time noise levels greater than 40dB of  $L_{\text{night, outside}}$  during the part of the night when most people are in bed. The LOAEL of night noise, 40dB  $L_{\text{night, outside}}$ , should be considered a health based limit value to protect the public.

### **3.6 ProPG: Planning and Noise – Professional Practice Guidance on Planning & Noise – New Residential Development, May 2017**

Ever since PPG 24 Planning and Noise was repealed in 2012 with the introduction of the National Planning Policy Framework (NPPF), there has been no objective policy guidance provided by the English government on noise aspects of new residential planning applications.

Noise is still clearly a material issue to be considered in planning, as highlighted by the requirements of paragraph 170 of the NPPF. However, no objective policy guidance on assessing potential noise impact at residential developments is provided in the NPPF or subsequent policy documents.

Guidance on acceptable noise levels within residential properties is provided within British Standard 8233:2014 as previously noted.

The ProPG has been produced to provide practitioners with guidance on a recommended approach to the management of noise within the planning system in England. The IOA, the Chartered Institute of Environmental Health and the Association of Noise Consultants worked together to produce the guidance which encourages better acoustic design for new residential development and aims to protect people from the harmful effects of noise.

The guidance emphasises the importance of *good acoustic design* in the planning process and describes what this may mean.

- *Good acoustic design* describes the process of considering the environmental noise impacts on the proposed residential development from the early stages in a project.
- Site layout, building massing, orientation and internal layouts can all be important to demonstrating good acoustic design.
- Noise needs to be considered in the context of the internal environmental quality (IEQ), to avoid trade-offs with other aspects of the internal environment such as day-lighting, sunlight, ventilation and thermal comfort.

### 3.7 Aviation Policy Framework

The Aviation Policy Framework (APF) sets out the Government's high-level strategy and overall objectives for aviation and the policies to achieve those objectives. The policies of the APF are of relevance to this given the adjacency of the proposed development to Stansted Airport.

The APF recognises that noise is the primary concern of local communities near airports and aims to strike a fair balance between the negative impacts of noise on health and quality of life and the positive economic impacts of flights. In this context, it sets the Governments' overall policy on aviation noise as follows:

"...to limit and, where possible, reduce the number of people in the UK significantly affected by aircraft noise".

Much of the noise policy contained in the APF concerns noise from aircraft arriving and departing an airport including helicopter noise, and the levels at which noise insulation measures and compensation should be considered. In this regard the APF reference the policy threshold marking the 'approximate onset of significant community annoyance' at a daytime noise level of 57dB  $L_{Aeq,16hr}$  and an upper threshold level of 63dB  $L_{Aeq,16hr}$  at which airport operators would be expected to offer financial support towards acoustic insulation to both residential properties and community buildings, including schools.

### 3.8 Stansted Airport noise contours

Noise exposure contours have been produced by the Civil Aviation Authority for Stansted Airport in 2018 and 2019. These are reproduced in **Appendix 3**.

The lowest daytime contour shown in **Figure 3** is 54dB  $L_{Aeq,16\text{ hr}}$ . This is below the threshold for SOAEL shown in **Table 1** and equal to the APF 'approximate onset of community annoyance'. The proposed developed site is considerably further away from the airport than this contour line. Therefore, it is likely that daytime noise levels are well below the APF onset values and threshold for SOAEL.

Similarly, the lowest night-time contour shown in **Figure 4** is 48dB  $L_{\text{night}}$ . This is only 1dB above the threshold for SOAEL shown in **Table 1**. The proposed development site is considerably further away from the airport than this contour line. Therefore, it is likely that night-time noise levels are well below the threshold for SOAEL.

The level of aircraft noise across the site, which is perpendicular to the runway, is much lower than adjacent areas of land at similar distance that fall within the direction of the runway and therefore is under the flight-path. This is to be expected for all airports. As a worst-case, aircraft noise has been considered to be above the threshold of LOAEL, but below the level of SOAEL.



## 4. Environmental Noise Survey Methodology

An initial Environmental Noise Assessment was undertaken at the site during April 2021 and was carried out by Stansted Environmental Services Ltd. Unattended noise measurement data collected during the initial survey has been included within this report.

Unattended noise measurements carried out during the initial survey were undertaken between 13:11 on Tuesday 13<sup>th</sup> April 2021 and 23:00 on Sunday 18<sup>th</sup> April 2021. The Unattended Noise Measurement Position (UNMP) was located along the site's Northern boundary. Monitoring was conducted over 5 days to determine the prevailing ambient and maximum noise levels affecting the development.

Additional attended measurements were undertaken at the site on Tuesday 21<sup>st</sup> March 2023 to take into account the potential increase in baseline environmental noise levels that may affect the site since the relaxation of Covid-19 restrictions that were present during the initial unattended survey in April 2021. This approach was adopted to provide robustness to the assessment of environmental noise sources impinging on the site.

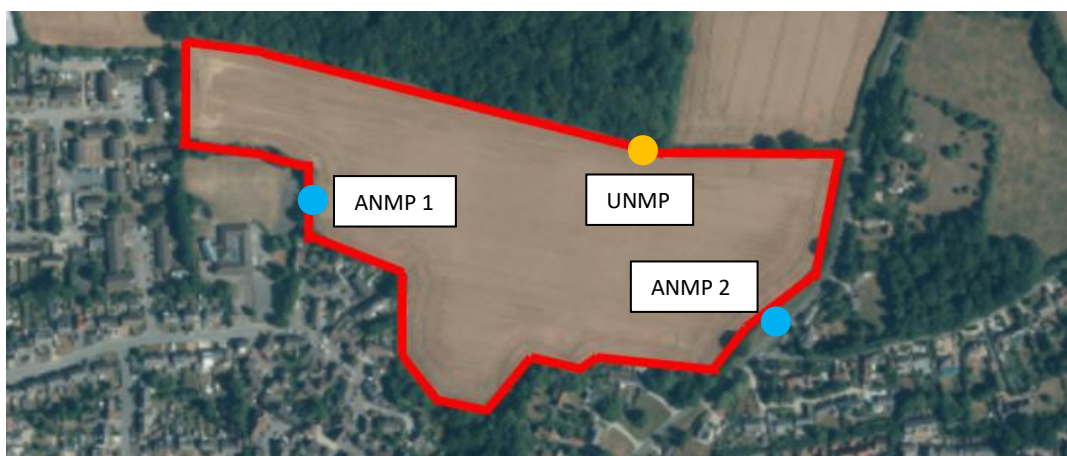
As a result, two additional attended measurements were undertaken at the site to account for noise emanating from the nearby Roseacres Primary School to the West of the site and noise generated from vehicle movements on Smiths Green to the East of the site.

Attended Noise Measurement Position 1 (ANMP 1) was located at the site boundary, adjacent to Roseacres Primary School and was measured across a continuous 1-hour period between 11:54 and 12:54 on Tuesday 21<sup>st</sup> March 2023. It was noted that lunchtime playground noise from Roseacres Primary School was evident between 12:02 and 12:46 during the measurement period. The measurement period was deemed to be a 'worst-case' scenario.

Attended Noise Measurement Position 2 (ANMP 2) was located along Smiths Green to the East of the site, approximately 1.0m from the edge of the carriageway. Under CRTN guidance, attended measurements were undertaken across a continuous 3-hour period between the hours of 10:00 and 17:00 on Tuesday 21<sup>st</sup> March 2023.

UNMP is highlighted in orange, whilst ANMP 1 and ANMP 2 are highlighted in blue in **Figure 2** below.

The monitoring locations were chosen to be reasonably representative of noise levels at the site. All equipment was installed and collected by Hugo Evans. Both unattended and attended noise measurements were positioned 1.5m above ground level and in free-field conditions.



**Figure 2 Site Plan showing approximate location of measurement positions**

With respect to unattended noise measurements undertaken during April 2021, the Sonitus Systems EM2030-O sound level meter and Nor-1251 calibrator had been calibrated with 2 years and 1 year, respectively, as shown in **Table 4** below.

**Table 4 Noise Measurement Equipment for Unattended Measurements undertaken in April 2021**

Equipment	Type	Serial Number	Date of Calibration	Calibration Expiry
<b>Nor-1251</b>	Calibrator	34436	15/06/2020	15/06/2022
<b>Sonitus Systems EM2030-O</b>	Sound Level Meter	00724	12/02/2021	11/02/2023

With respect to attended noise measurements undertaken during March 2023, the NTi Audio XL2 sound level meter and RION NC-74 calibrator had been calibrated with 2 years and 1 year, respectively, as shown in **Table 5** below.

**Table 5 Noise Measurement Equipment for Attended Measurements undertaken in March 2023**

Equipment	Type	Serial Number	Date of Calibration	Calibration Expiry
<b>RION NC-74</b>	Calibrator	00410208	20/04/2022	19/04/2023
<b>NTi Audio XL2</b>	Sound Level Meter	A2A-17871-E0	30/09/2022	29/09/2024

The noise survey and measurements were conducted in accordance with BS 7445-1:2003 'Description and measurement of environmental noise. Guide to quantities and procedures'.

With respect to unattended noise measurements undertaken during April 2021, weather conditions throughout the entire noise survey periods were noted to be between approximately -1-18° Celsius, clear to cloudy skies (30-90% cloud cover approximately) with a light wind (<5m/s).

With respect to attended noise measurements undertaken on Tuesday 21<sup>st</sup> March 2023, weather conditions throughout the entire noise survey periods were noted to be between approximately 13-15° Celsius, clear to cloudy skies (30-40% cloud cover approximately) with a light wind (<5m/s).

These weather conditions were checked against and confirmed by the use of the Met Office mobile application available on smart phone technology. These conditions were maintained throughout the majority of the survey period and are considered reasonable for undertaking environmental noise measurements.

The noise monitoring equipment was field-calibrated before and after each noise survey period. No significant drift was recorded. Equipment calibration certificates can be provided upon request.

## 5. Measurement Results

The results of unattended measurements undertaken at the UNMP are summarised in the following tables. The measured raw data and graphs showing the results of the unattended measurements are provided in **Appendix 5**.

Day-time and night-time ambient noise levels measured during the unattended survey are presented in **Table 4**.

Maximum noise levels during the unattended survey are presented in **Table 6**.

**Table 4 Ambient noise levels measured at the UNMP**

Date	Daytime (07:00 – 23:00)	Night (23:00 – 07:00)
	$L_{Aeq,16h}$ (dB)	$L_{Aeq,8h}$ (dB)
13 <sup>th</sup> April 2021	51*	47
14 <sup>th</sup> April 2021	49	51
15 <sup>th</sup> April 2021	52	49
16 <sup>th</sup> April 2021	50	47
17 <sup>th</sup> April 2021	50	44
18 <sup>th</sup> April 2021	45	-
<b>Average</b>	49	48

\* Measurement disregarded as not made over full period due to monitoring start and end time

**Table 6 Maximum noise levels measured at the UNMP**

Date	Night (23:00 – 07:00)
	$L_{Amax,8h}$ (dB)
13 <sup>th</sup> April 2021	59
14 <sup>th</sup> April 2021	61
15 <sup>th</sup> April 2021	58
16 <sup>th</sup> April 2021	58
17 <sup>th</sup> April 2021	54
18 <sup>th</sup> April 2021	-
<b>Average</b>	58

The results of attended measurements undertaken at ANMP 1 and ANMP 2 are summarised in the following tables. The measured raw data and graphs showing the results of the attended measurements are provided in **Appendix 5**.

The results of attended measurements undertaken at ANMP 1 are summarised in **Table 7** below.

**Table 7 Sound pressure levels measured at ANMP 1**

Date	Start time	Sound pressure levels (dB)			Dominant noise source(s)
		$L_{A_{fmax},1h}$	$L_{A_{eq},1h}$	$L_{A_{90},1h}$	
21 <sup>st</sup> March 2023	11:54	79	61	52	Roseacres Primary School playground

The results of attended measurements undertaken at ANMP 2 are summarised in **Table 8** below.

The day-time ambient noise level, as required in PPG24, is calculated through the shortened CRTN method guidance using the obtained 3-hour  $L_{A10}$  measurement data.

**Table 8 Sound pressure levels measured at ANMP 2**

Date	Start time	Sound pressure levels (dB)					Dominant noise source(s)
		$L_{A_{fmax},3h}$	$L_{A_{eq},3h}$	$L_{A10,3h}$	$L_{A10,18h}$	$L_{A_{eq},16h}$	
21 <sup>st</sup> March 2023	13:59	82	63	60	59	57	Smiths Green Road

## 6. Design Criteria

### Site Suitability for Residential Development

This section describes an assessment of facade sound insulation to control noise ingress. The required façade specification largely depends on the external noise levels and the internal noise criteria.

With appropriate sound insulation measures and building construction as exemplified within this report, the site is more than capable of achieving the recommended internal noise levels inside the residential premises.

### Local Authority requirements

The site lies within the jurisdiction of the Local Authority, Uttlesford District Council. The Local Authority refers to the standards set out for internal noise level in BS8233:2014, as outlined in **Section 3.4**.

At this site, the facade performance requirements are driven by the daytime ambient noise levels, most notably the daytime ambient noise levels generated from Smiths Green Road and Roseacres Primary School.

**Table 9 Façade Elevations Required Sound Insulation Performance**

Period	Measured External Noise Level, dB	Internal Noise Level Requirement, dB	Minimum Sound Reduction Performance Requirement, dB SRI
<b>Daytime (07:00 - 23:00)</b>	57dB $L_{Aeq,16hour}$	35dB $L_{Aeq,16hour}$	22
<b>Night-time (23:00 - 07:00)</b>	48dB $L_{Aeq,8hour}$	30dB $L_{Aeq,8hour}$	18
<b>Night-time (23:00 - 07:00)</b>	58dB $L_{AFmax}$	45dB $L_{AFmax}$	13

### Non-glazed elements

The proposed residential developments will be of masonry construction. The construction is anticipated to provide a sound reduction performance of 57dB; the same performance would also be required for the roof construction to provide suitable sound insulation. The non-glazed elements spectral data is presented below in **Table 10**.

**Table 10 Non-glazed elements assumed sound reduction performance**

Element	Octave band centre frequency SRI, dB					
	125Hz	250Hz	500Hz	1kHz	2kHz	4kHz
<b>Non-glazed element SRI</b>	34	47	56	62	61	55

## Guidance on glazing, and ventilation strategy

The recommended glazing configuration and ventilation strategy is highlighted below in **Table 11**.

**Table 11 Example glazing configurations and ventilation strategies for overall facade sound insulation**

Overall facade sound insulation, $R_w+C_{tr}$ (dB)	Example glazing configuration	Ventilation strategy
≤10	6 mm glass/16 mm cavity/6 mm glass	Open windows
10-15	6 mm glass/16 mm cavity/6 mm glass	Limited open area opening windows
15-27	6 mm glass/16 mm cavity/6 mm glass	Acoustically attenuated passive ventilation (eg, trickle vents)

A minimum of 22dB  $R_w+C_{tr}$  noise reduction is required for all glazed elements in habitable rooms at Bulls Field. The performance is specified for the whole window unit, including the frame and other design features such as the inclusion of trickle vents. Glazing performance calculations have been based on achieving the measured ambient ( $L_{Aeq}$ ) noise levels and for maximum ( $L_{Amax}$ ) night-time noise levels as given in BS8233:2014.

The attenuation of sound provided by an open window is typically in the region of 10 to 15dB, depending on the open area. As such, where the required facade sound insulation performance is less than  $R_w+C_{tr}$  10dB, it is likely that opening windows can be used for ventilation while achieving the necessary internal noise levels.

## External Amenity Spaces

It is noted that external ambient noise levels at the rear of the site in the residential gardens generally comply with the WHO's 'Guideline for Community Noise' (2009) guideline values for external amenity space (55dB  $L_{Aeq}$ ). With the development being outside of Stansted Airport's flight path highlighted in the noise exposure report from the Civil Aviation Authority (CAA) the noise levels within the external amenity spaces can be achieved.

BS8233:2014 states that 'for traditional external areas that are used for amenity space, such as gardens and patios, it is desirable that the external noise level does not exceed an upper guideline value of 55dB  $L_{Aeq}$ , which would be acceptable in noisier environments. However, it is also recognized that these guideline values are not achievable in all circumstances...in higher noise areas, such as city centres or urban areas adjoining the strategic transport network, a compromise between elevated noise levels and other factors, such as the convenience of living in these locations or making efficient use of land resources to ensure development needs can be met, might be warranted. In such a situation, development should be designed to achieve the lowest practicable levels in these external amenity spaces but should not be prohibited'.

## 7. Conclusions

Stansted Environmental Services (SES) Ltd has been commissioned by Weston Homes Plc to prepare, an Environmental Noise Assessment for the proposed development at Bulls Field, Warish Hall Farm, Takeley, CM22 6PU.

An environmental noise survey has been carried out by Stansted Environmental Services (SES) to establish the existing noise levels from road traffic and other significant noise sources in the area.

To provide suitable conditions for the proposed residential developments and minimise noise related impacts, it is necessary to achieve suitable internal ambient noise levels to meet BS8233:2014 recommendations.

A minimum of 22dB  $R_w+C_{tr}$  noise reduction is required for all glazed elements in habitable rooms at Bulls Field. Example specifications with minimum sound reduction index figures are provided for the new glazing proposals. The performance is specified for the whole window unit, including the frame and other design features such as the inclusion of trickle vents.

With the implementation of the controls stated above, the required internal and external noise levels can be achieved as referred to in BS8233:2014 and noise should not be a concern for the development of the site.

This page is intentionally blank.



## 8. Appendices

This page is intentionally blank

## Appendix 1 – Glossary of Acoustics Terminology

### Noise

Noise is defined as unwanted sound. Human ears are able to respond to sound in the frequency range 20Hz to 20,000Hz and over the audible range of 0dB (the threshold of perception) to 140dB (the threshold of pain). The ear does not respond equally to different frequencies of the same magnitude, but is more responsive to mid-frequencies than to lower or higher frequencies. To quantify noise in a manner that approximates the response of the human ear, a weighting mechanism is used. This reduces the importance of lower and higher frequencies, in a similar manner to the human ear.

Furthermore, the perception of noise may be determined by a number of other factors, which may not necessarily be acoustic. In general, the impact of noise depends upon its level, the margin by which it exceeds the background level, its character and its variation over a given period of time. In some cases, the time of day and other acoustic features, such as tonality or impulsiveness may be important, as may the disposition of the affected individual. Any assessment of noise should give due consideration to all of these factors when assessing the significance of a noise source.

The most widely used weighting mechanism that best corresponds to the response of the human ear is the “A”-Weighting Scale. This is widely used for environmental noise measurement, and the levels are denoted as dB(A) or  $L_{Aeq}$ ,  $L_{A90}$  etc, according to the parameter being measured.

The decibel scale is logarithmic rather than linear, and hence a 3dB increase in sound level represents a doubling of the sound energy present. Judgement of sound is subjective, but as a channel guide a 10dB(A) increase can be taken to represent a doubling of loudness, whilst an increase of 3dB(A) is generally regarded as the minimum difference needed to perceive a change under normal listening conditions.

An indication of the range of sound levels commonly found in the environment is given in the table.

### Typical Sound Levels found in the Environment

Sound Level	Location
0dB(A)	Threshold Hearing
20-30dB(A)	Quiet Bedroom at night
30-40dB(A)	Living Room during the day
40-50dB(A)	Typical Office
50-60dB(A)	Inside a Car
60-70dB(A)	Typical High Street
70-90dB(A)	Inside a Factory
90-100dB(A)	Burglar Alarm at 1m away
100-110dB(A)	Jet Aircraft on Takeoff
140dB(A)	Threshold of Pain

## Terminology

dB(Decibel)	The scale on which sound pressure level is expressed. It is defined as 20 x the logarithm of the ratio between the ratio route mean square pressure of the sound field and a reference pressure ( $2 \times 10^{-5} \text{Pa}$ )
dB(A)	A-Weighted Decibel. This is measure of the overall level of sound across the audible spectrum with a frequency weighting (i.e. A-Weighting) to compensate for the varying sensitivity of the human ear to sound at different frequencies.
$L_{Aeq,T}$	$L_{Aeq}$ is defined as the notional steady sound level which, over a stated period of time (T), would contain the same amount of acoustical energy as the A-weighted fluctuating sound measured over that period.
$L_{Amax}$	$L_{Amax}$ is the maximum A-weighted sound pressure level recorded over the period stated. $L_{Amax}$ is sometimes used in assessing environmental noise where occasional loud noises occur which may have little effect on the overall $L_{eq}$ noise level but will still effect the noise environment. Unless described otherwise, it is measured using the fast sound level meter response.
$L_{Cpeak}$	The absolute highest sound pressure of the noise signal of either the positive or negative part of the sound with a 'C' weighting. 'C' weighting is the frequency response often used to measure very high noise levels.
$L_{10}$ and $L_{90}$	If a non-steady noise is to be described it is necessary to know both its level and degree of fluctuation. The $L_n$ indices are used for this purpose, and the term refers to the level exceeded for n% of the time. Hence $L_{10}$ is the level exceeded for 10% of the time and as such can be regarded as the average maximum level. Similar $L_{90}$ is the average minimum level and is often used to describe the background noise. It is common practice to use the $L_{10}$ index to describe traffic noise.
Free Field Level	A sound field determined at a point away from reflective surfaces other than the ground with no significant contributions due to sound from other reflective surfaces. Generally as measured outside and away from buildings.
Fast	A time weighting used in the route mean square section of a sound level meter with a 125milisecond time constraint.
Slow	A time weighting used in the route mean square section of a sound level meter with a 1000milisecond time constant.
$R_w$	A single-number quantity which characterises the airborne sound insulation of a material or building element over a range of frequencies.
$C_{tr}$	A-weighted urban traffic noise spectrum.

## **Appendix 2 – Limitations to this Report**

### **Notes on limitations**

This report has been prepared for the titled project or named part therefore and should not be used in whole or part and relied upon for any other project without the written authorisation of Stansted Environmental Services Ltd. Stansted Environmental Services Ltd, accept no responsibility or liability for the consequences of this document if it is used for a purpose other than that for which it was commissioned. Persons wishing to use or rely upon this report for other purposes must seek written authority to do so from the owner of this report and oblique all Stansted Environmental Services Ltd, and agree to indemnify Stansted Environment Services Ltd for any and all loss or damage resulting there from. Stansted Environment Services Ltd accepts no responsibility or liability for this document to any other party other than the person by whom it was commissioned.

The findings and opinions are relevant to the dates of the site works and should not be relied upon to represent conditions at substantially later dates. Opinions included therein are based on information gathered during the study and from our experience. If additional information becomes available which may affect our comments, conclusions or recommendations, Stansted Environment Services Ltd, reserve the right to review the information, reassess any new potential concerns and modify our opinions accordingly.

This page is intentionally blank.

### Appendix 3 – Stansted Airport noise contours

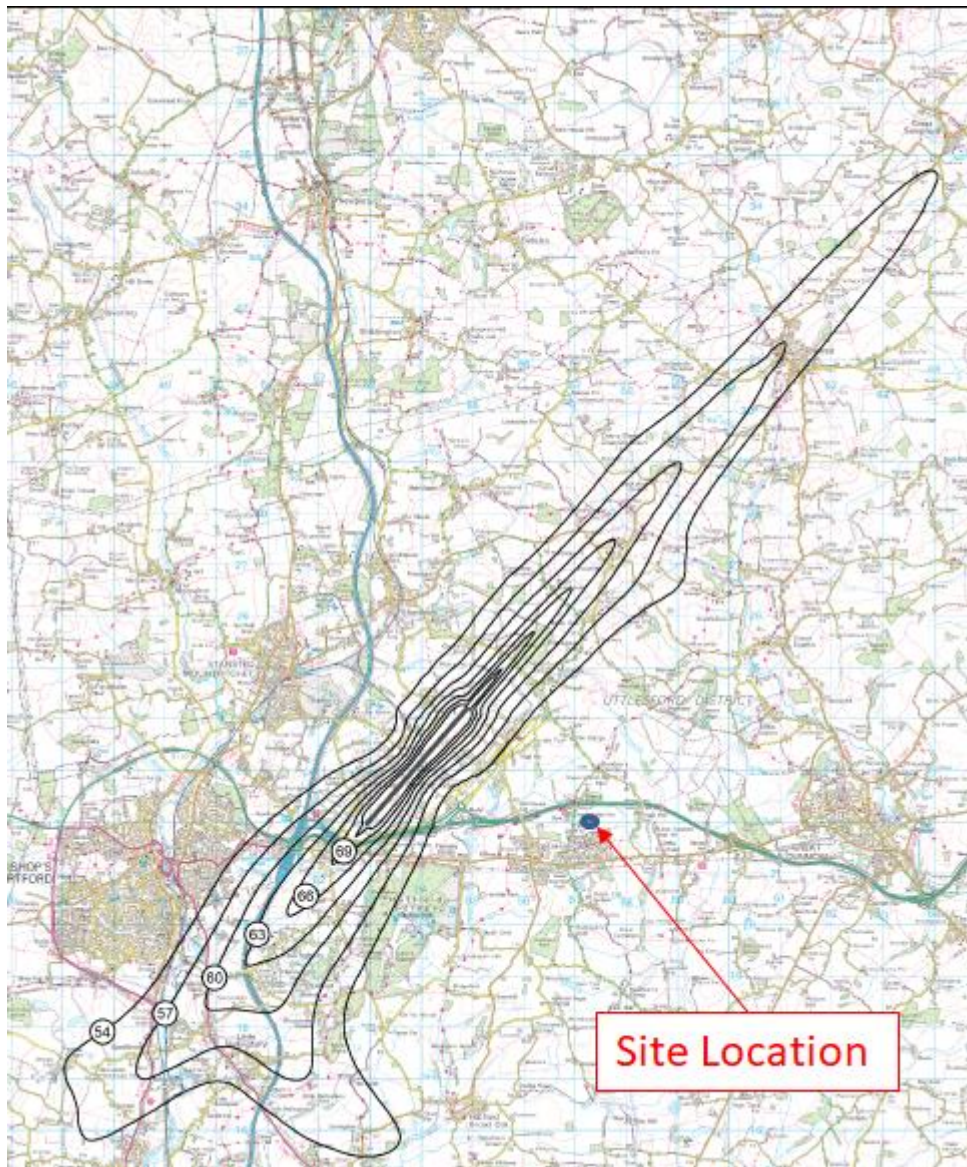


Figure 3 Stansted 2019 summer day actual modal split (75% SW / 25% NE) Leq contours



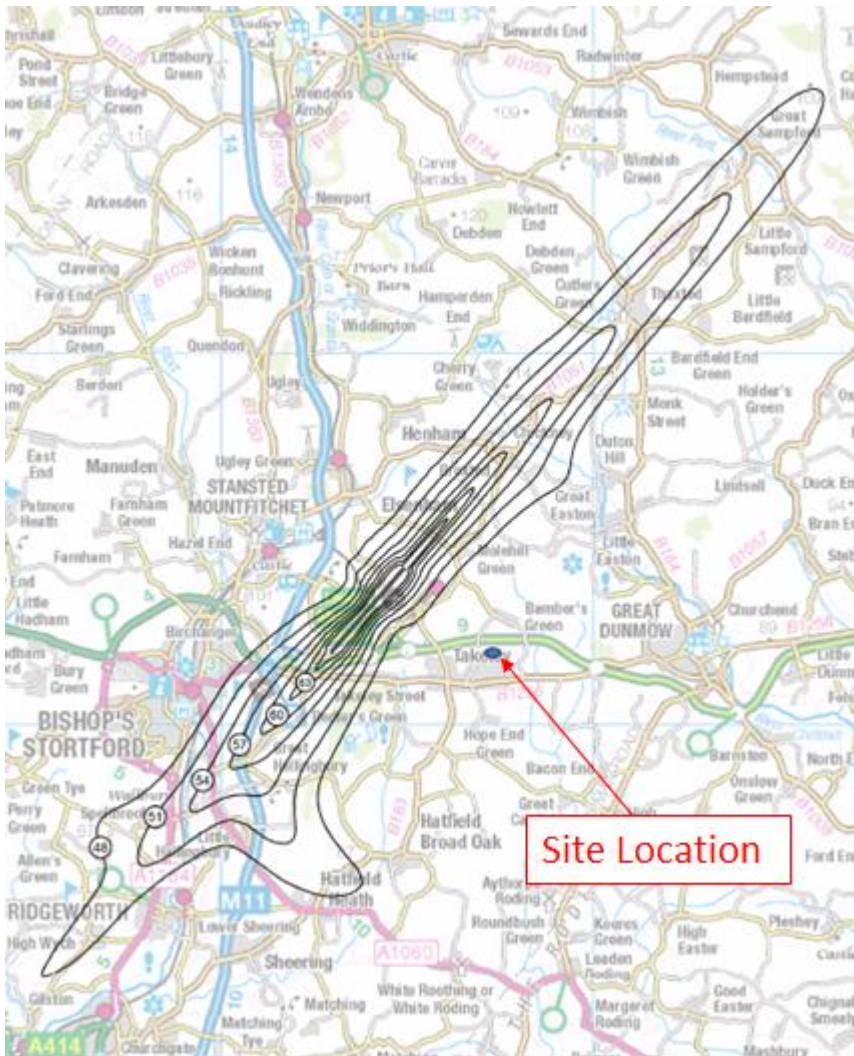


Figure 4 Stansted 2019 summer night actual modal split (75% SW / 25% NE) Leg



## Appendix 4 – Proposed Site Plan

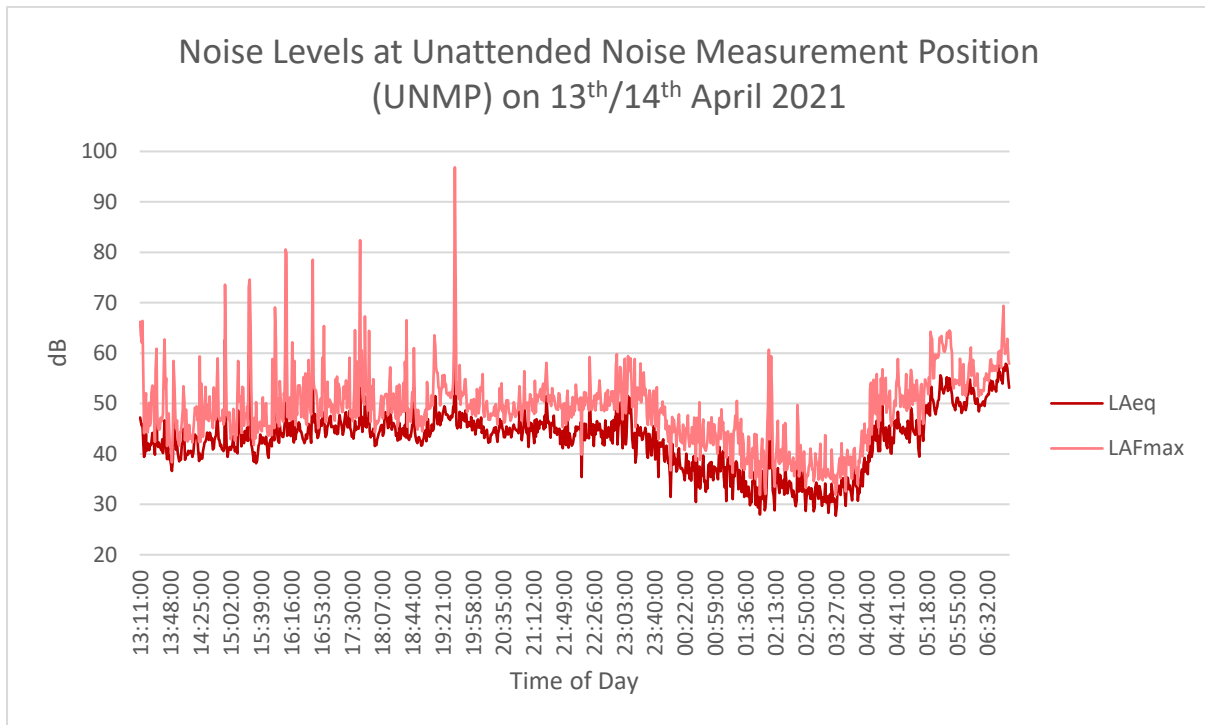


Figure 5 Proposed Site Plan

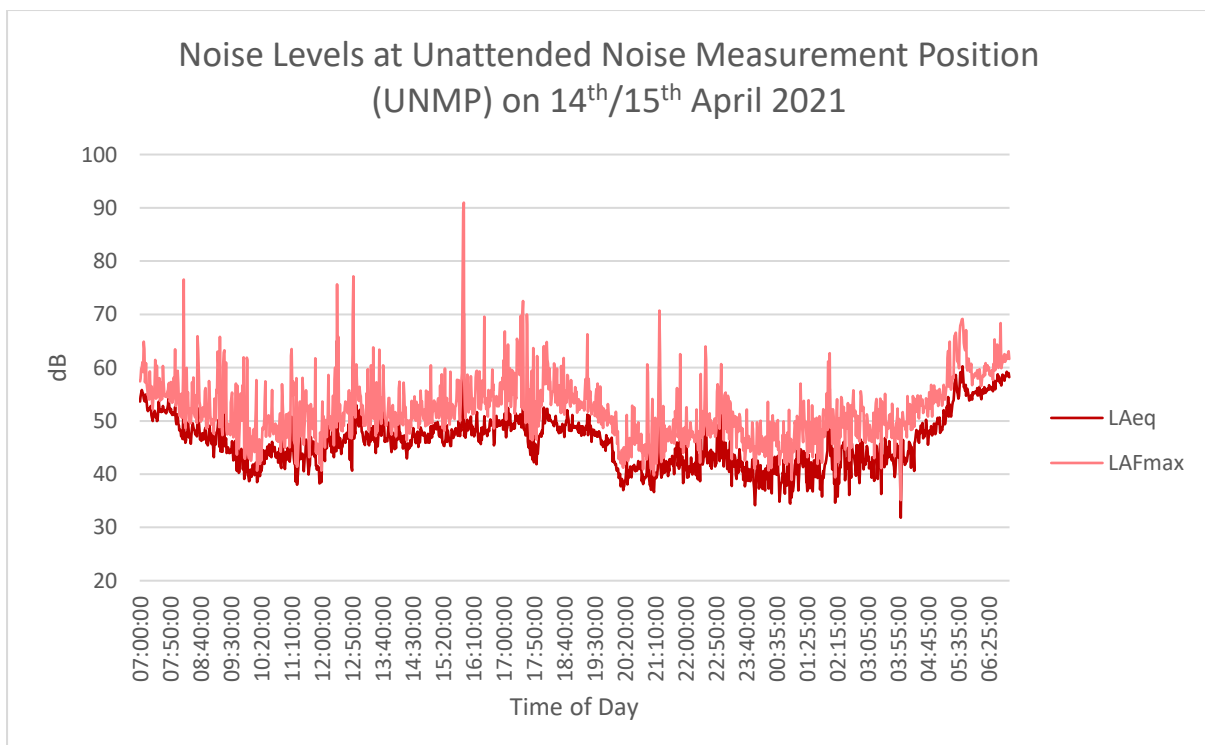
This page is intentionally blank

## Appendix 5 – Noise Monitoring Data

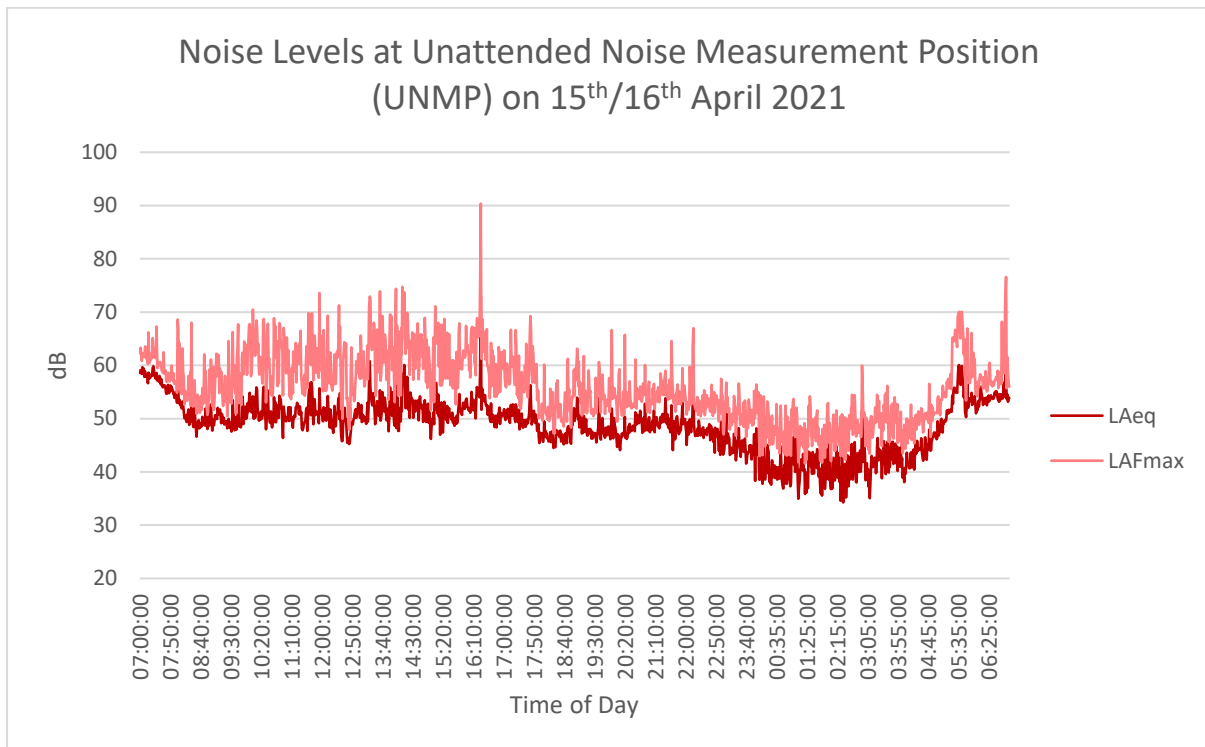
Graphical representation of the noise levels at the Unattended Noise Measurement Position (UNMP) on the 13<sup>th</sup>/14<sup>th</sup> April 2021



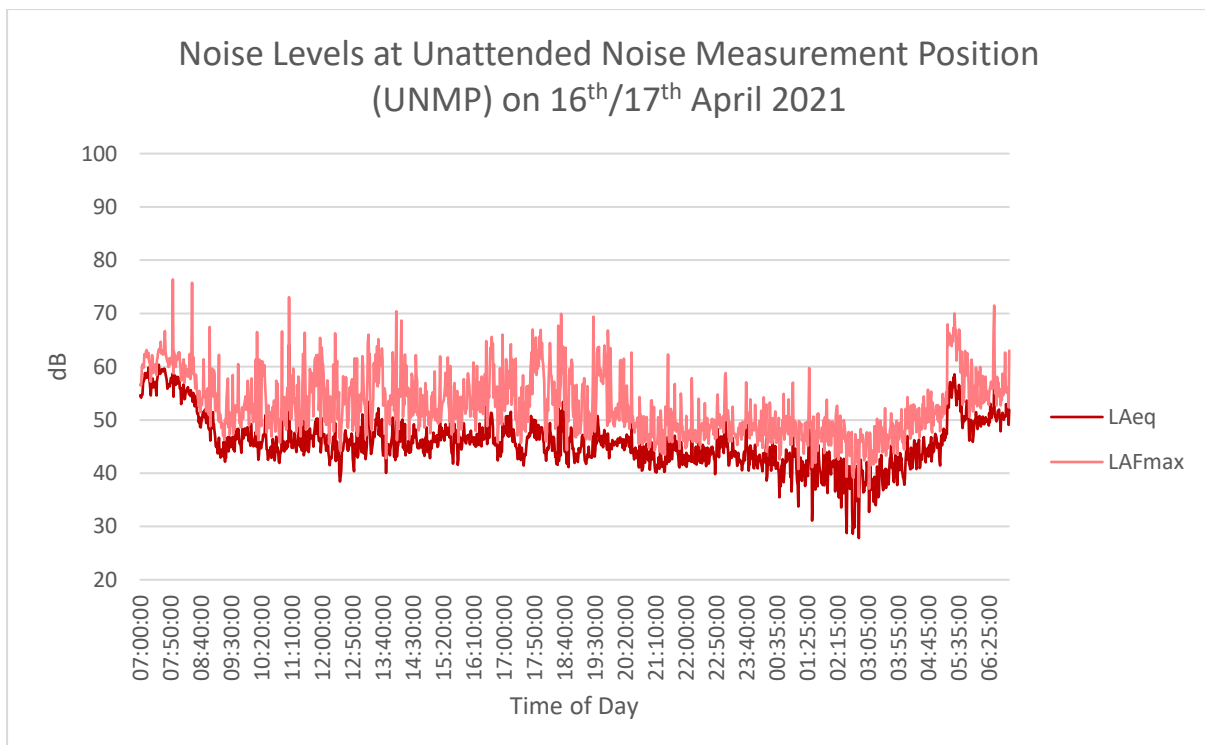
Graphical representation of the noise levels at the Unattended Noise Measurement Position (UNMP) on the 14<sup>th</sup>/15<sup>th</sup> April 2021



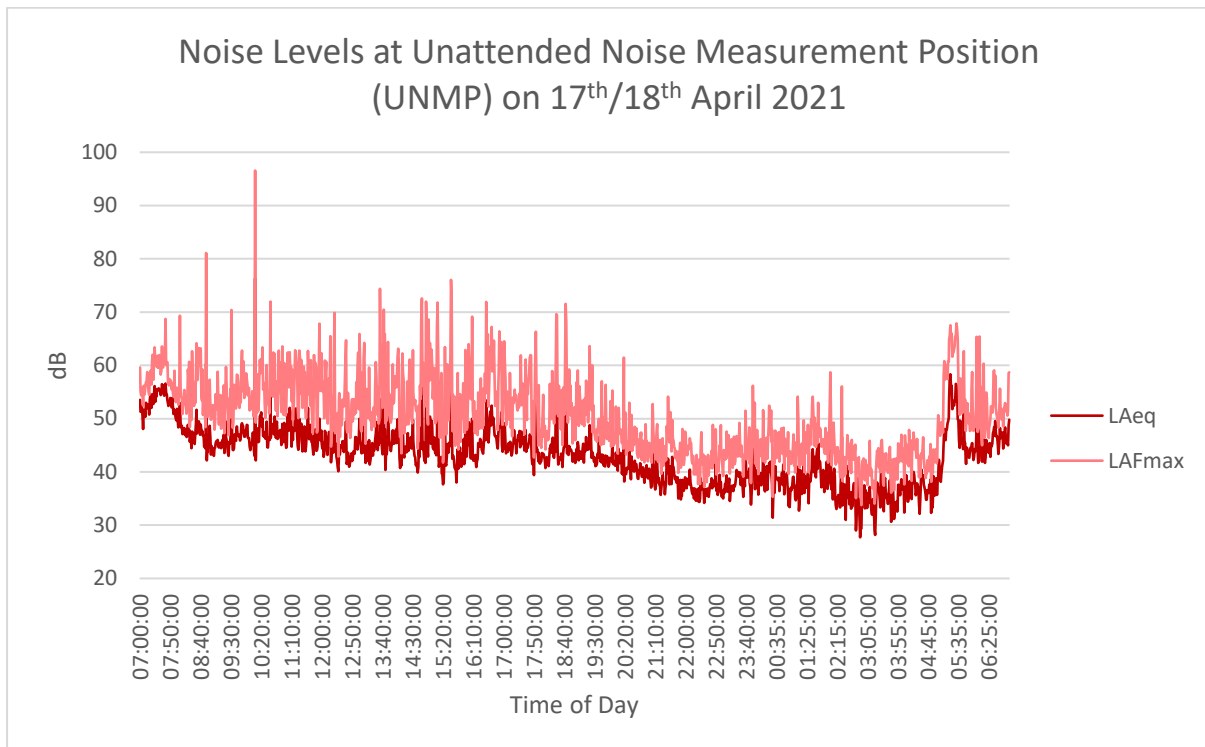
**Graphical representation of the noise levels at the Unattended Noise Measurement Position (UNMP) on the 15<sup>th</sup>/16<sup>th</sup> April 2021**



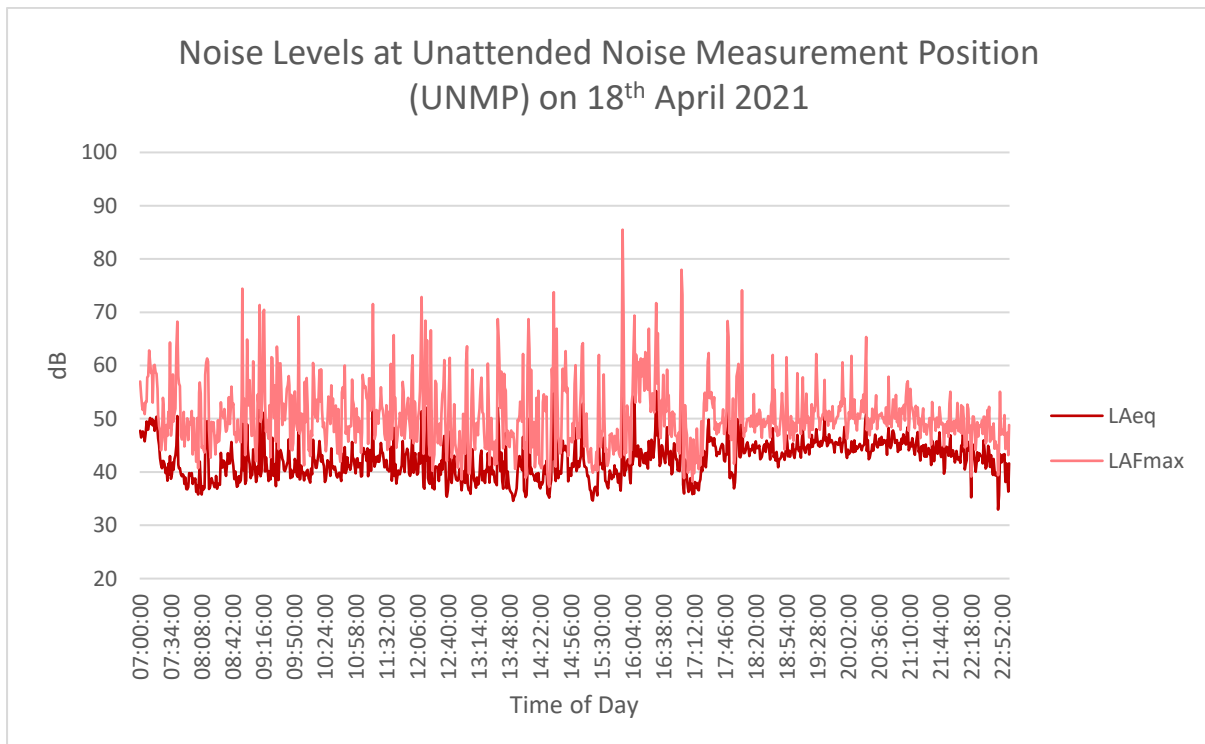
**Graphical representation of the noise levels at the Unattended Noise Measurement Position (UNMP) on the 16<sup>th</sup>/17<sup>th</sup> April 2021**



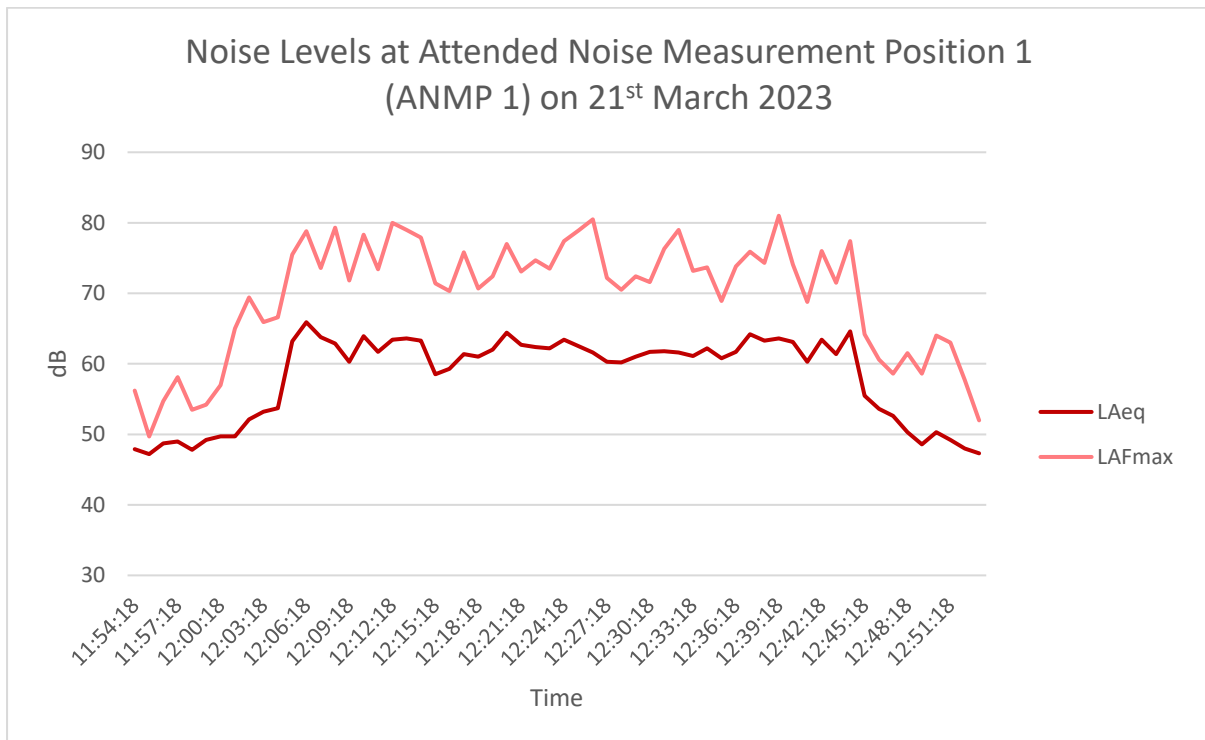
**Graphical representation of the noise levels at the Unattended Noise Measurement Position (UNMP) on the 17<sup>th</sup>/18<sup>th</sup> April 2021**



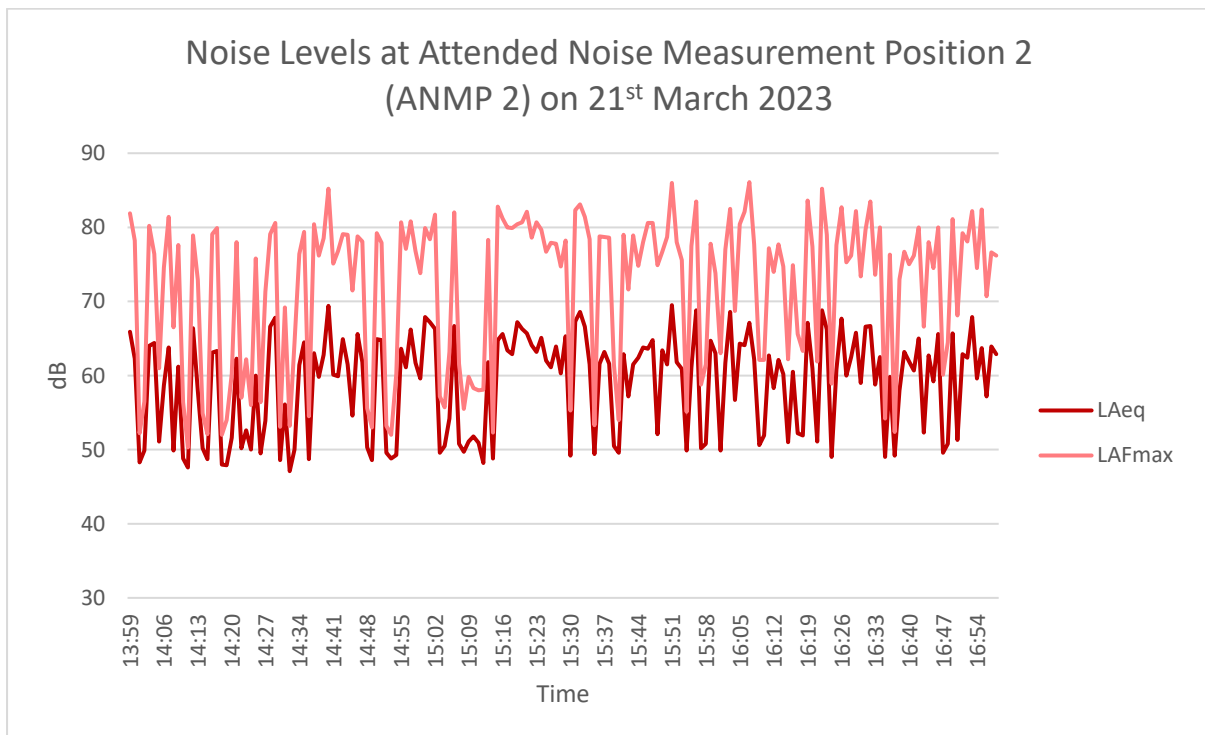
**Graphical representation of the noise levels at the Unattended Noise Measurement Position (UNMP) on the 18<sup>th</sup> April 2021**



**Graphical representation of the noise levels at Attended Noise Measurement Position 1 (ANMP 1) on the 21<sup>st</sup> March 2023**



**Graphical representation of the noise levels at Attended Noise Measurement Position 2 (ANMP 2) on the 21<sup>st</sup> March 2023**



This page is intentionally blank.