



UK Health  
Security  
Agency

# **Emergency Department Syndromic Surveillance System Bulletin (England) 2023 Week 25**

# Key messages

## Data reported to: 25 June 2023

During week 25, daily emergency department attendances for asthma returned to near expected levels following the large increases reported during the previous two weeks. Attendances for gastroenteritis in children levelled off during week 25 and remain just below expected levels. There was a small increase in 'heat or sunstroke' attendances during the weekend 24/25 June.

## Syndromic indicators at a glance

**Table 1: The current trend (based on previous weeks, not only the current week) and the level (compared to the expected baseline), of each indicator included in this bulletin.**

Indicator	Trend <sup>1</sup>	Level
Total attendances ( <b>Figure 1</b> )	No Trend	No baseline
COVID-19-like ( <b>Figure 2</b> )	Decreasing	No baseline
Acute respiratory infections ( <b>Figure 3</b> )	Decreasing	Similar to baseline
Acute bronchiolitis or bronchitis ( <b>Figure 4</b> )	Decreasing	Below baseline
Influenza-like illness ( <b>Figure 5</b> )	No trend	Similar to baseline
Pneumonia ( <b>Figure 6</b> )	Decreasing	Above baseline
Asthma ( <b>Figure 7</b> )	Decreasing	Above baseline
Gastroenteritis ( <b>Figure 8</b> )	No trend	Below baseline
Cardiac ( <b>Figure 9</b> )	No trend	Similar to baseline
Myocardial ischaemia ( <b>Figure 10</b> )	No trend	Similar to baseline
Acute alcohol intoxication ( <b>Figure 11</b> )	No trend	Above baseline
Mental health ( <b>Figure 12</b> )	No trend	No baseline
Scarlet fever ( <b>Figure 13</b> )	No trend	Similar to baseline
Heat or sunstroke ( <b>Figure 14</b> )	Increasing	Above baseline

<sup>1</sup> trend reports on the trend seen over most recent and earlier weeks

# Contents

Key messages .....	2
Syndromic indicators at a glance .....	2
Contents .....	3
About this syndromic surveillance system .....	4
Total attendances.....	5
Respiratory conditions .....	7
COVID-19-like .....	7
Acute respiratory infections .....	9
Acute bronchiolitis/bronchitis .....	11
Influenza-like illness .....	13
Pneumonia.....	15
Asthma.....	17
Gastrointestinal conditions .....	19
Gastroenteritis .....	19
Cardiac conditions.....	21
Cardiac.....	21
Myocardial ischaemia.....	23
Other conditions .....	25
Acute alcohol intoxication .....	25
Mental health .....	27
Scarlet fever.....	29
Seasonal environmental conditions .....	31
Heat-health alerts in place .....	31
Heat or sunstroke .....	32
Notes and caveats .....	34
Acknowledgements .....	35
About the UK Health Security Agency .....	36

# About this syndromic surveillance system

This bulletin presents data from the UK Health Security Agency (UKHSA) emergency department syndromic surveillance system.

Syndromic surveillance can be used to:

- assess current trends
- assess current trends and levels compared to historical baselines
- compare trends between age groups/areas

Syndromic surveillance should not be used to:

- estimate total burden or number of 'cases' of a condition (see **Notes and caveats**)
- compare levels between age groups/areas

Fully anonymised, daily ED data are analysed and reported here, to identify and describe trends for a variety of syndromic indicators:

- syndromic indicators include groupings such as acute respiratory tract infections, gastroenteritis and myocardial ischaemia
- syndromic indicators are based on:
  - the primary diagnosis for each attendance
  - other diagnoses may be recorded, but are not used for indicator grouping
  - diagnoses are based on signs/symptoms (not laboratory confirmed)
- **Key messages** describes any notable trends nationally (England), by age group and/or by geographical area (based on UKHSA Regions)
- the full list of syndromic indicators reported here, along with their current level and trend, are summarised in **Table 1**
- charts are provided for each syndromic indicator, on a national basis, by age group and by geographical area (UKHSA Region). Each chart includes a year of data with:
  - 7-day moving averages (adjusted for weekends and bank holidays) to aid in the identification of trend
  - statistical baselines (where available) to aid in the assessment of level compared to historical expectations

For further information please see **Notes and caveats**

Previous weekly bulletins from this system are available [here](#).

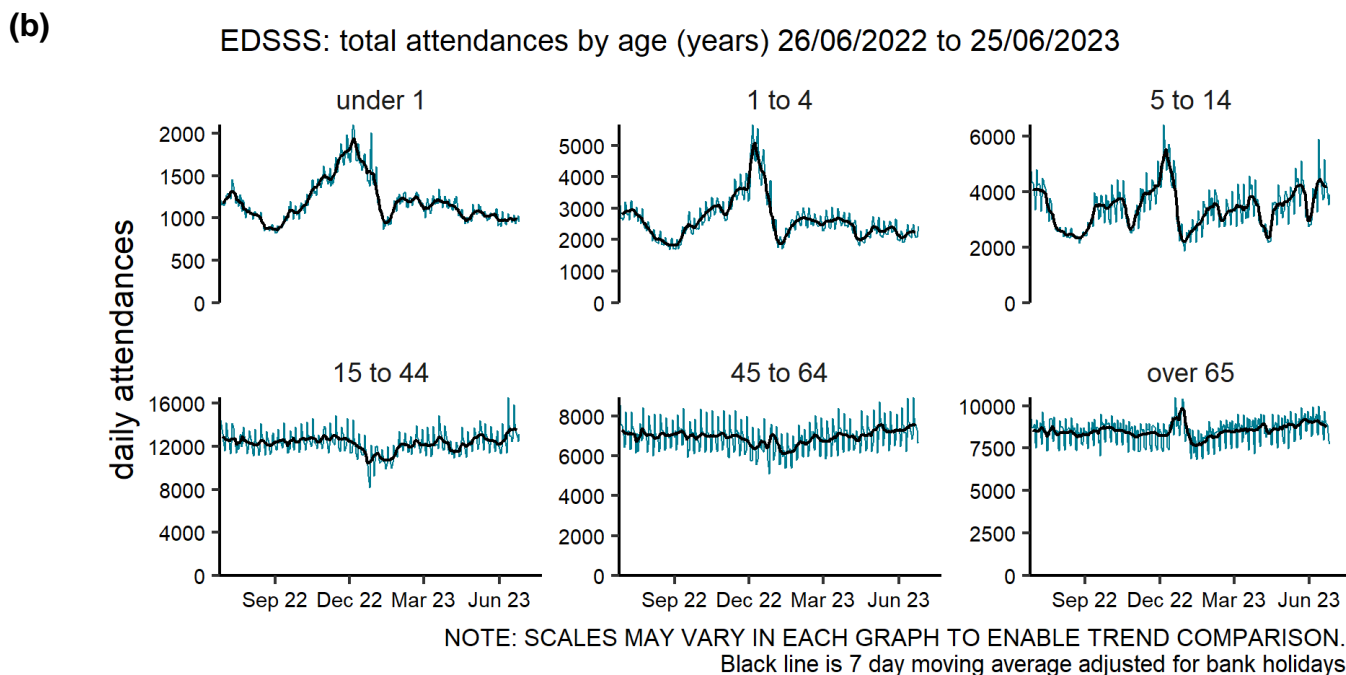
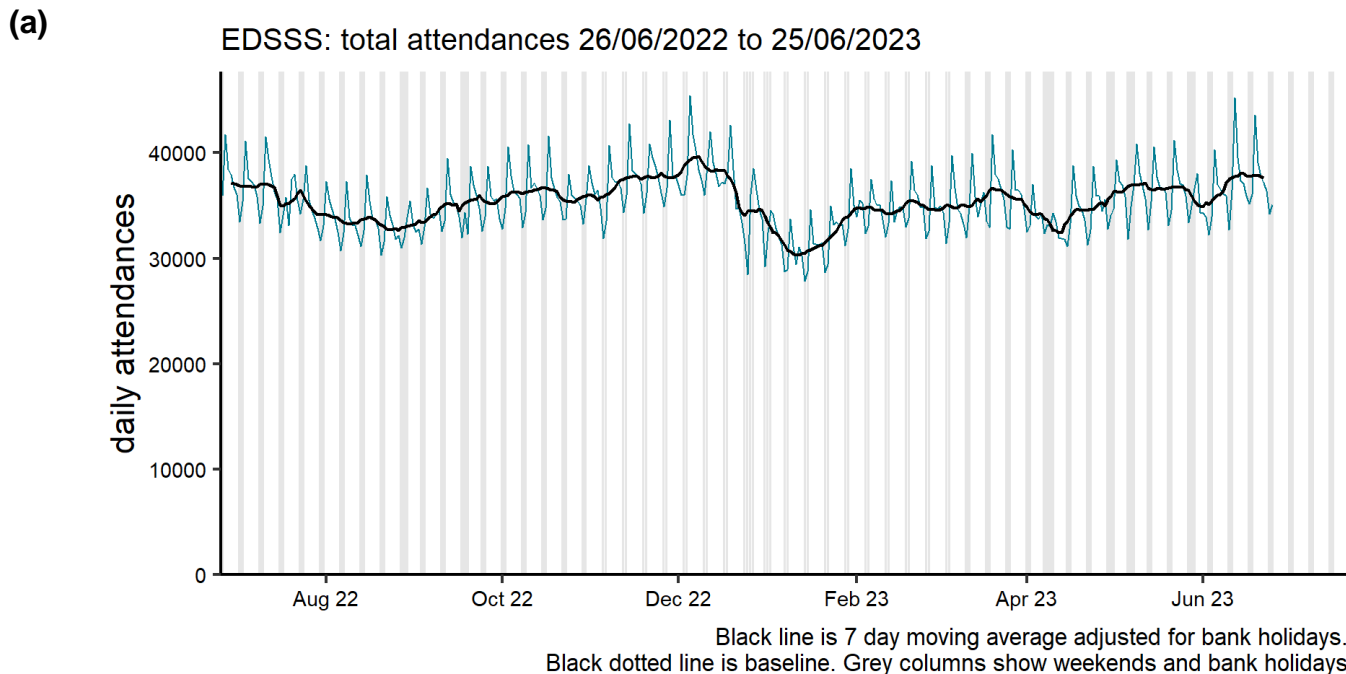
## Data quality issues of note this week

No issues identified. See **Table 2** and **Table 3** for the numbers of EDs included this week.

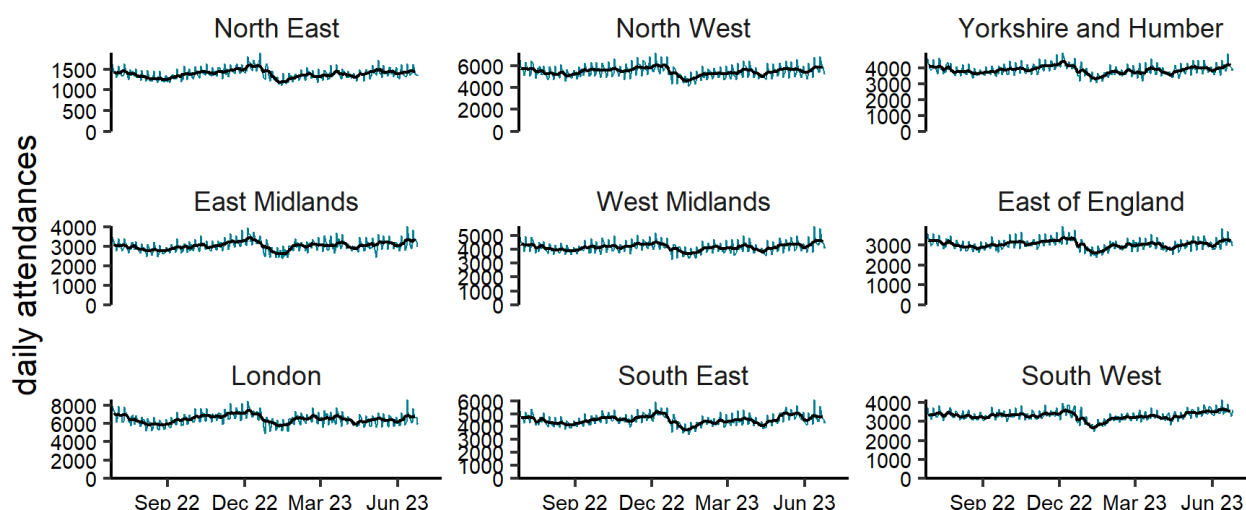
Remodelled EDSSS baselines have been refitted to surveillance data during week 6 2023 to account for post-COVID-19 changes in health care seeking behaviour.

# Total attendances

**Figure 1: Daily number of ED attendances (and 7-day moving average adjusted for bank holidays) recorded in this sentinel syndromic surveillance system in England (a) nationally, (b) by age and (c) by UKHSA Region.**



(c) EDSSS: total attendances by region 26/06/2022 to 25/06/2023



NOTE: SCALES MAY VARY IN EACH GRAPH TO ENABLE TREND COMPARISON.  
 Black line is 7 day moving average adjusted for bank holidays.  
 Black dotted line is baseline.

**Table 2: The number of emergency department (ED) attendances and number with a diagnosis code included in surveillance each day during the most recent week.**

Date	Total attendances <sup>2</sup>	Diagnoses included <sup>2</sup>
19 June 2023	43,585	27,551
20 June 2023	39,058	24,531
21 June 2023	37,786	23,619
22 June 2023	37,137	23,987
23 June 2023	36,392	23,144
24 June 2023	34,225	21,267
25 June 2023	35,079	22,528

**Table 3: The number of EDs in total and in each UKHSA Region included in surveillance each day during the most recent week.**

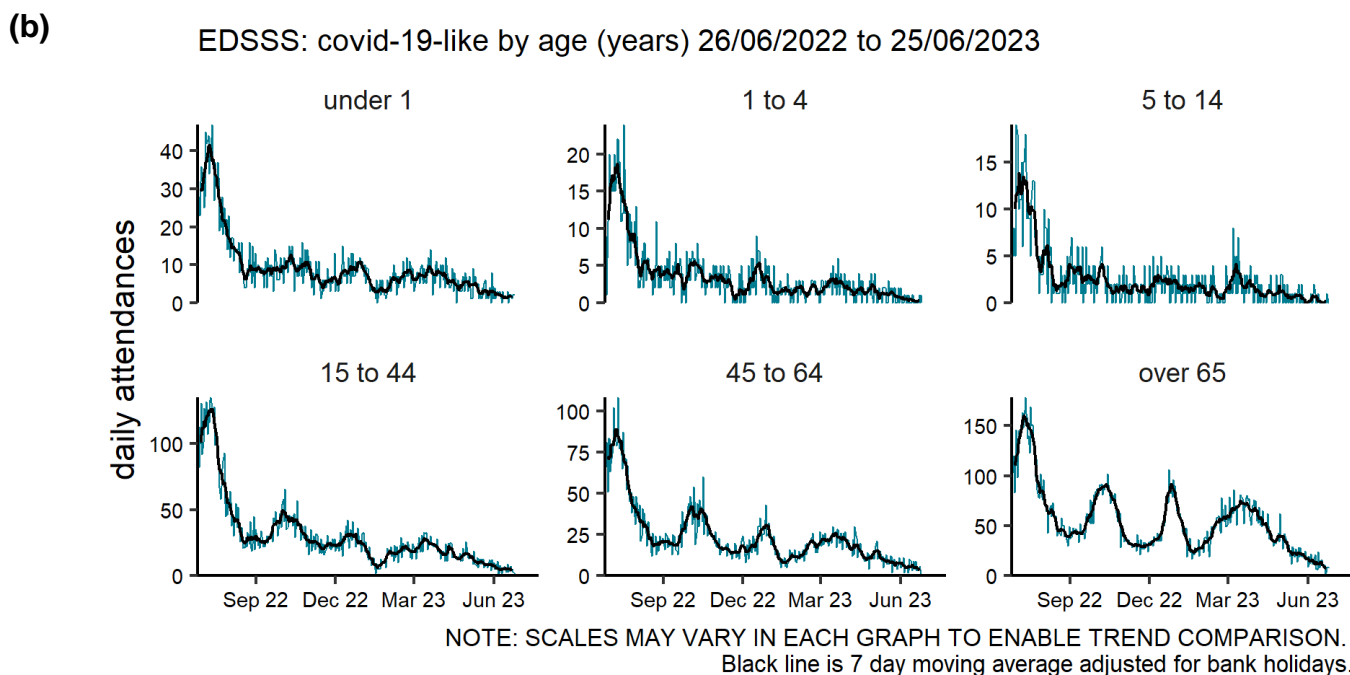
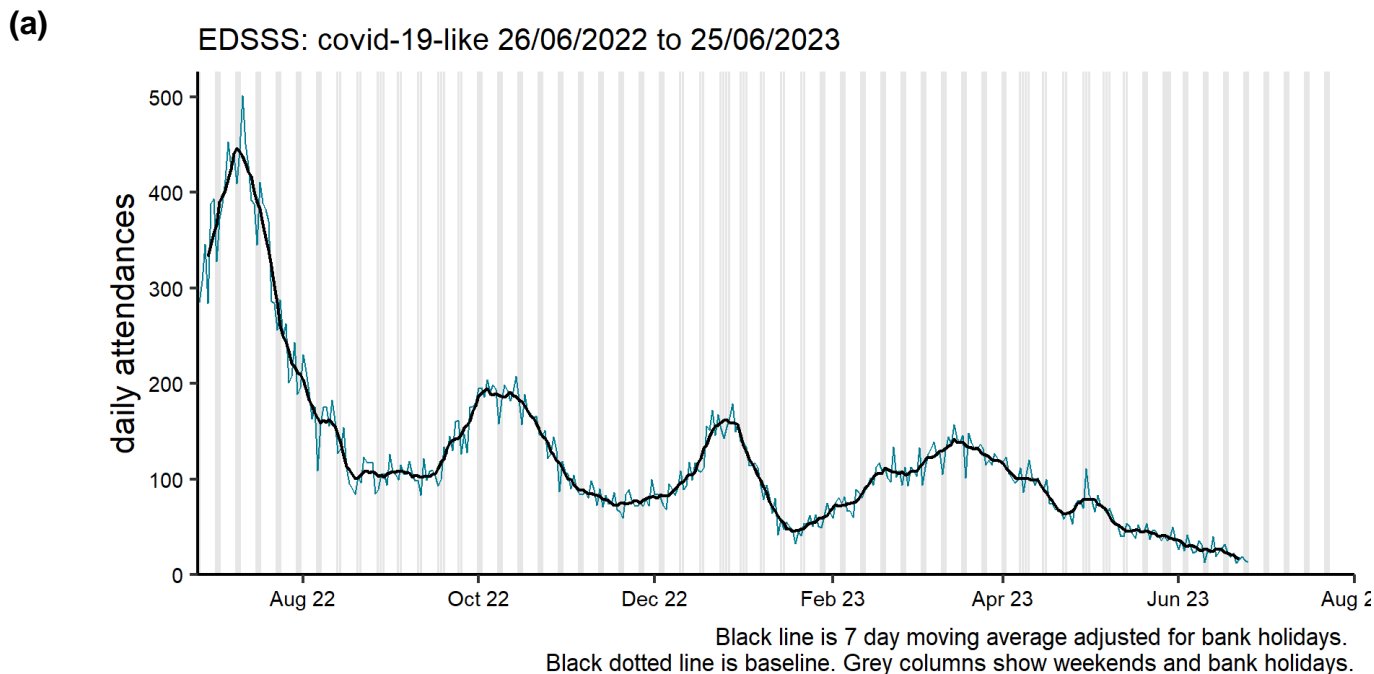
UKHSA Region	Number of EDs <sup>2</sup>
North East	5
North West	24
Yorkshire and Humber	16
West Midlands	16
East Midlands	11
East of England	12
London	25
South West	17
South East	19
Total	139

<sup>2</sup> only attendances from Type 01 EDs meeting the weekly reporting criteria are included in this report, for further details see **Notes and caveats**

# Respiratory conditions

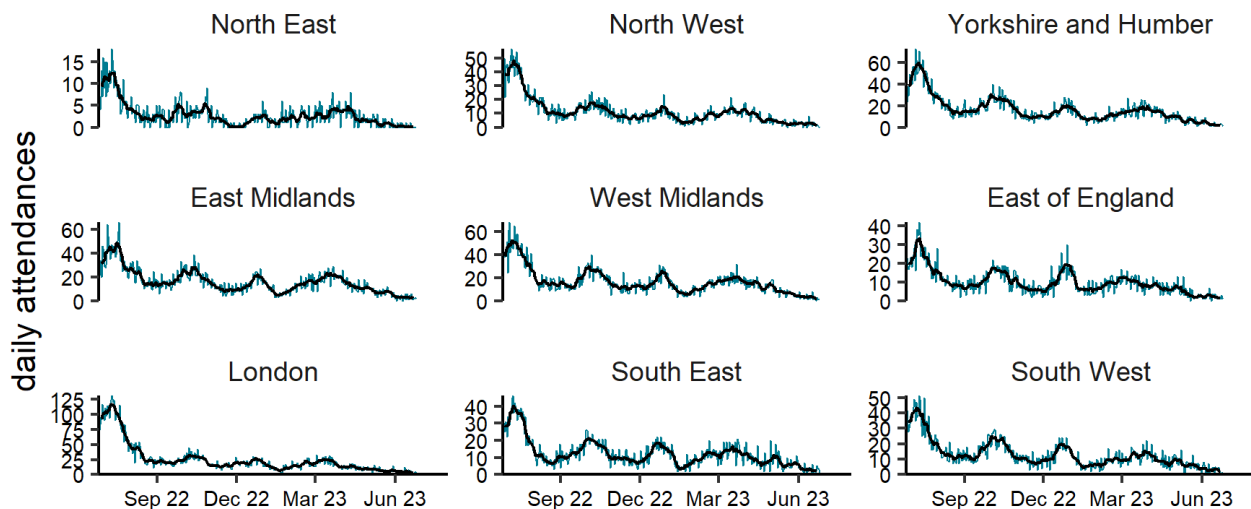
## COVID-19-like

**Figure 2: Daily number of COVID-19-like ED attendances (and 7-day moving average adjusted for bank holidays), England (a) nationally, (b) by age and (c) by UKHSA Region.**



(c)

EDSSS: covid-19-like by region 26/06/2022 to 25/06/2023

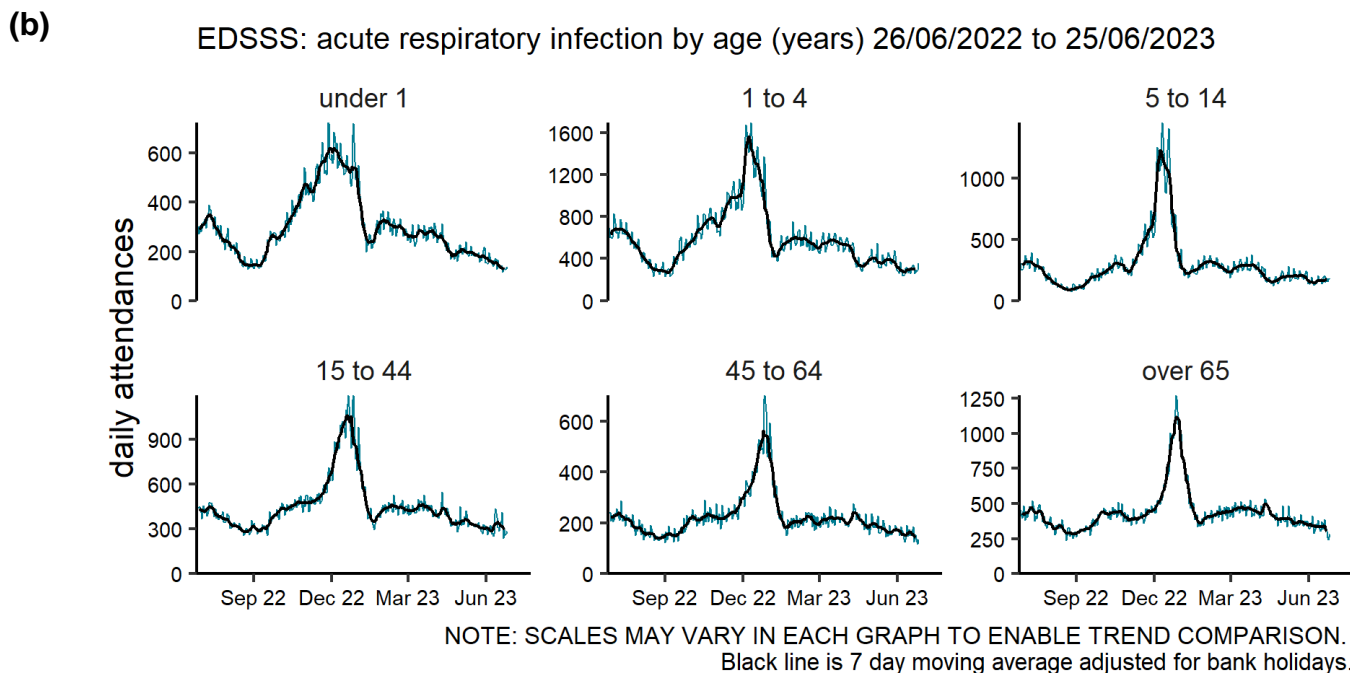
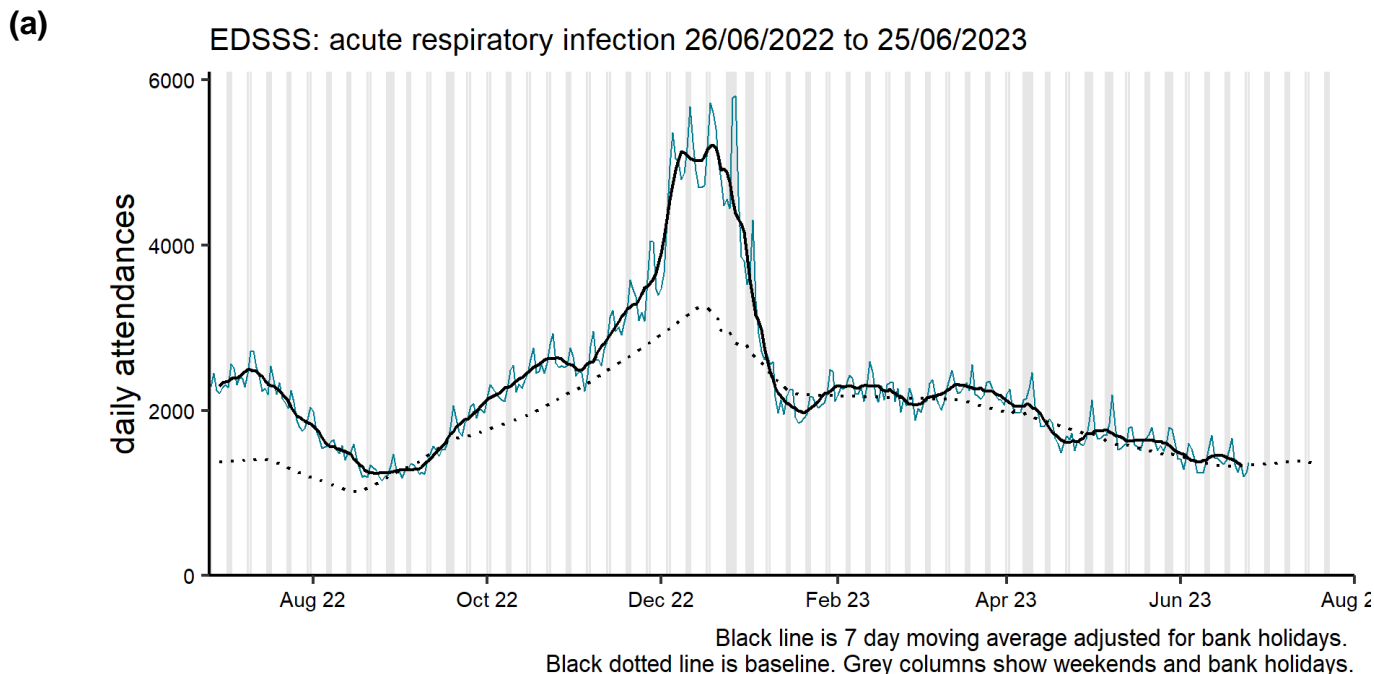


NOTE: SCALES MAY VARY IN EACH GRAPH TO ENABLE TREND COMPARISON.  
Black line is 7 day moving average adjusted for bank holidays.  
Black dotted line is baseline.



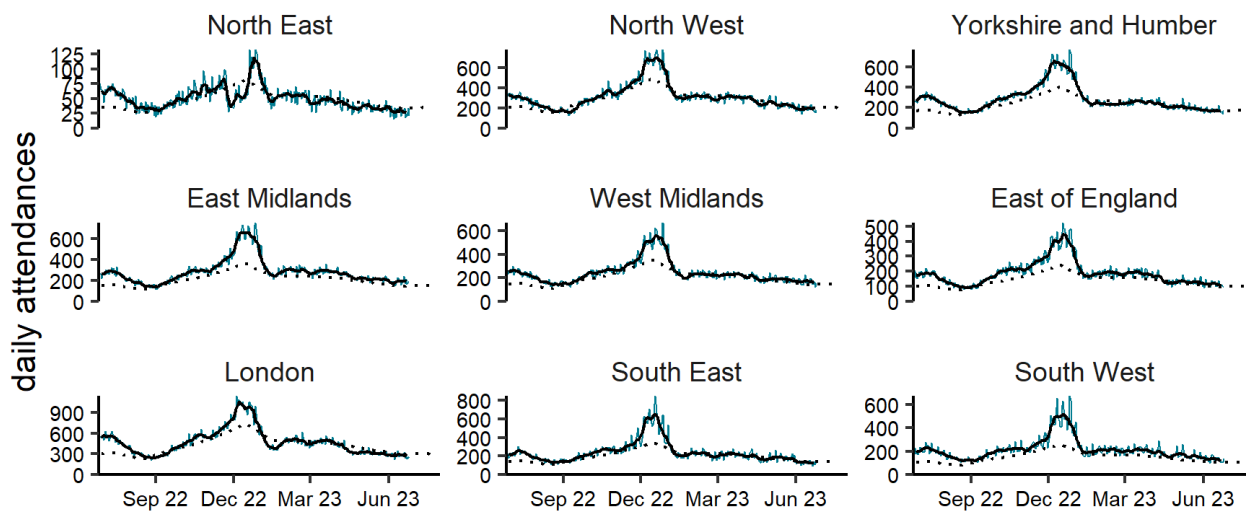
# Acute respiratory infections

**Figure 3: Daily number of acute respiratory infection ED attendances (and 7-day moving average adjusted for bank holidays), England (a) nationally, (b) by age and (c) by UKHSA Region.**



(c)

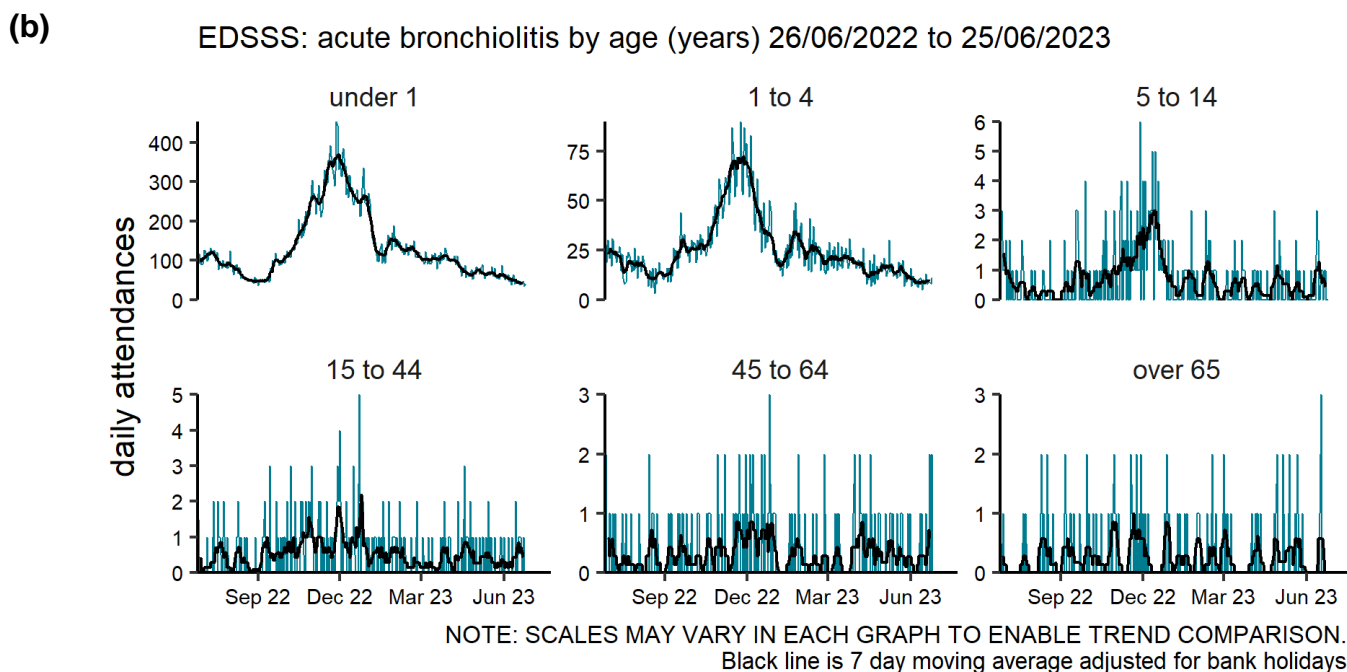
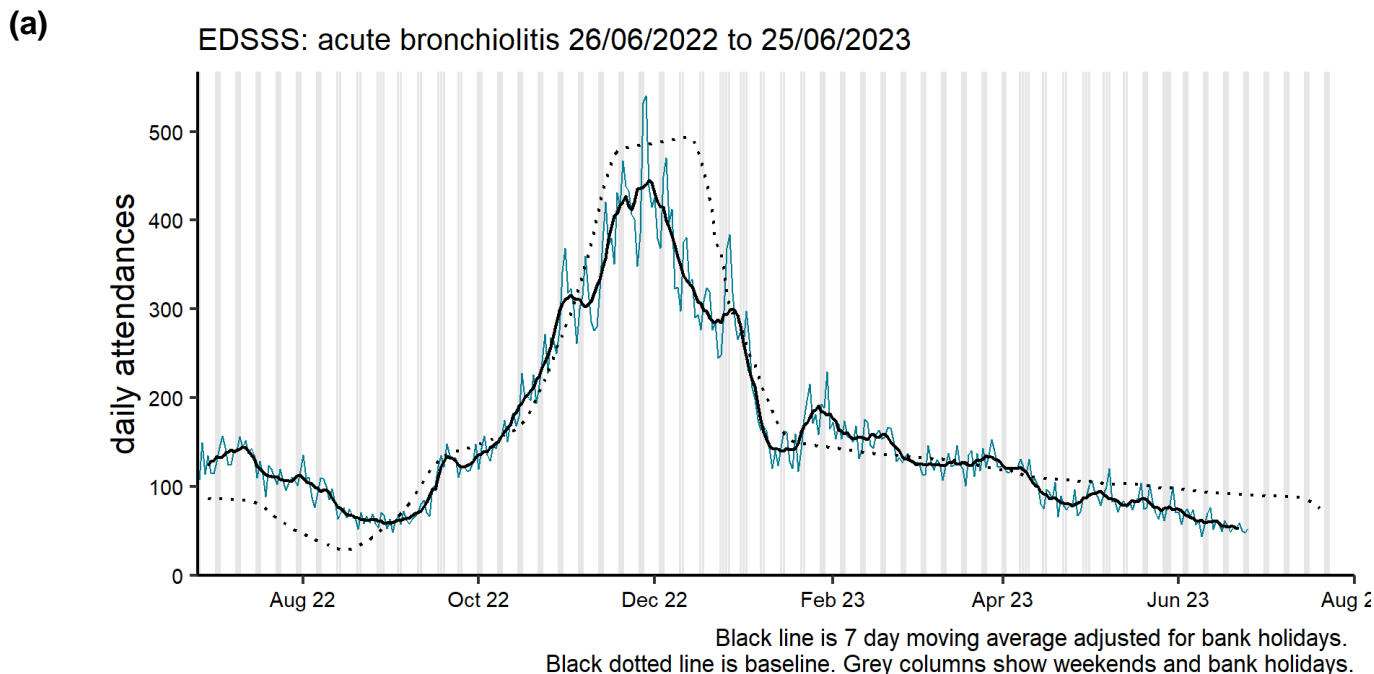
EDSSS: acute respiratory infection by region 26/06/2022 to 25/06/2023



NOTE: SCALES MAY VARY IN EACH GRAPH TO ENABLE TREND COMPARISON.  
Black line is 7 day moving average adjusted for bank holidays.  
Black dotted line is baseline.

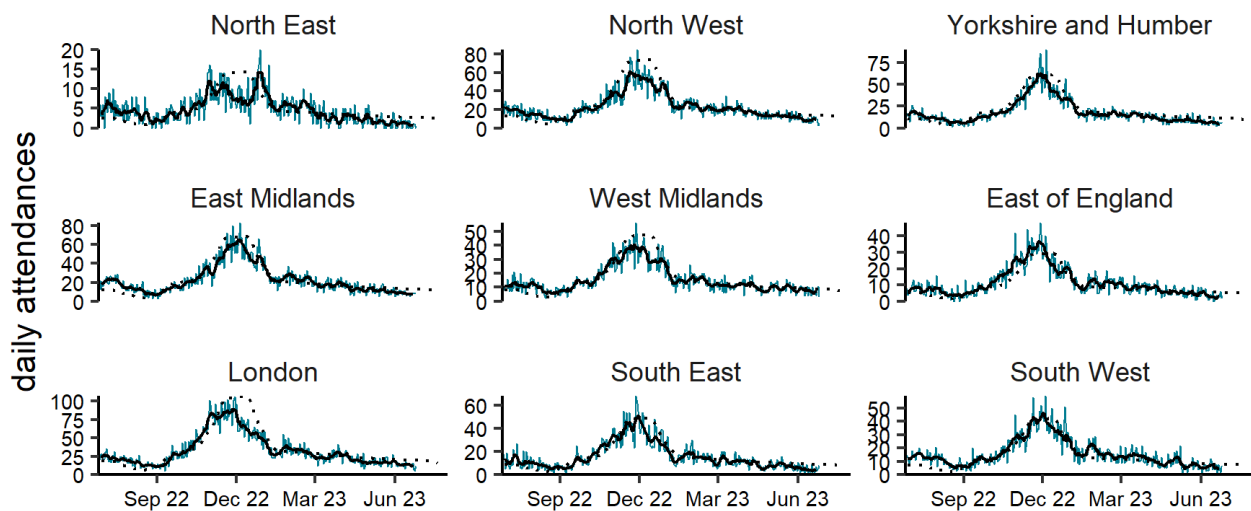
## Acute bronchiolitis/bronchitis

**Figure 4: Daily number of acute bronchiolitis/bronchitis ED attendances (and 7-day moving average adjusted for bank holidays), England (a) nationally, (b) by age and (c) by UKHSA Region.**



(c)

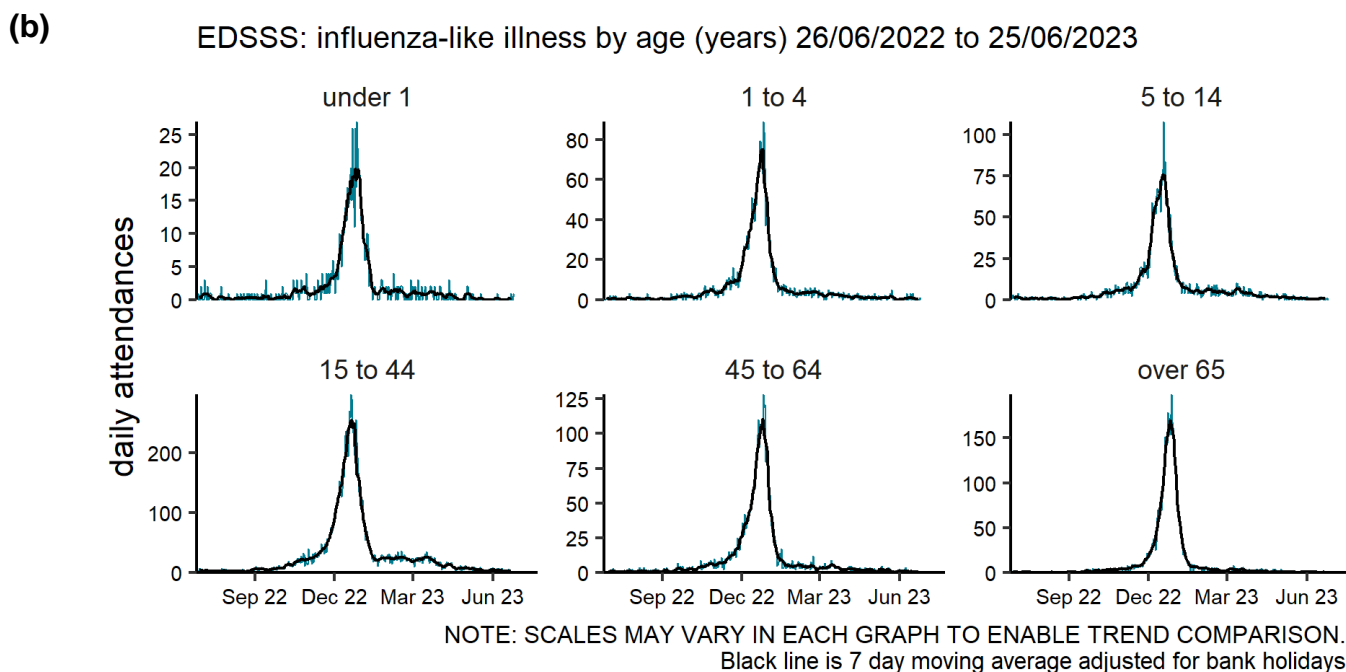
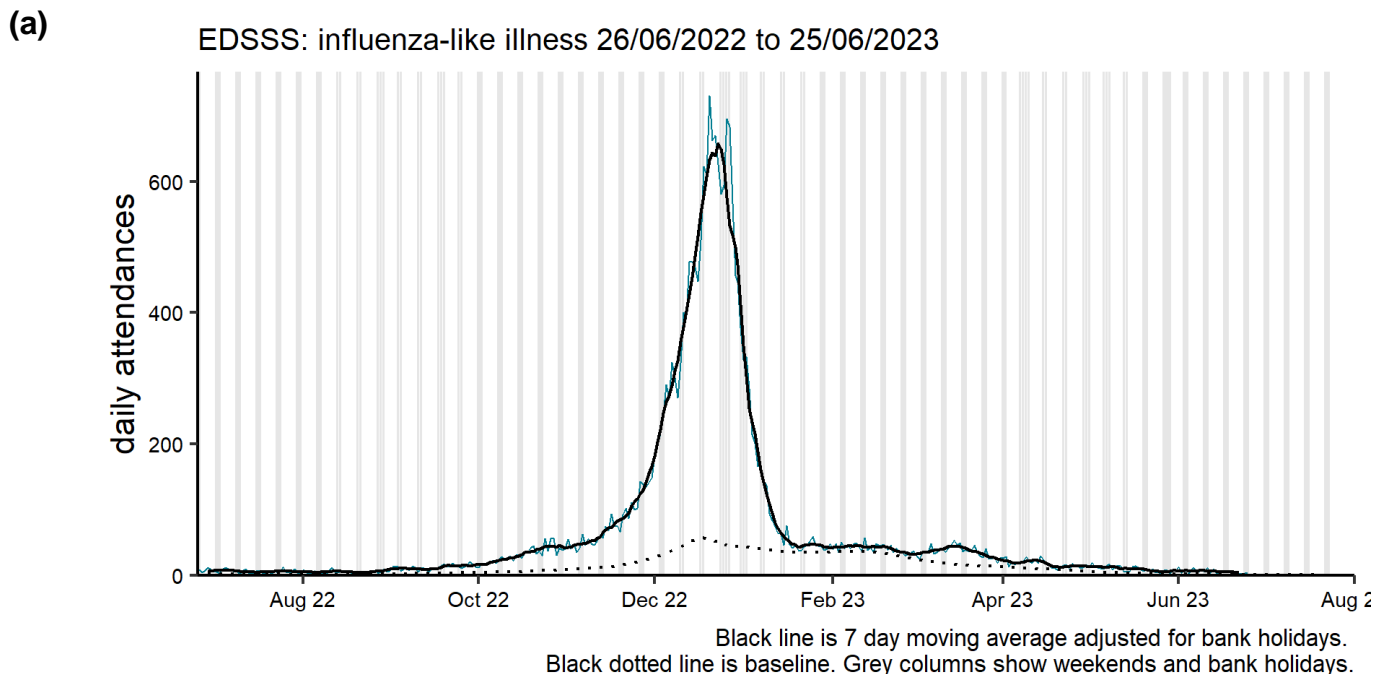
EDSSS: acute bronchiolitis by region 26/06/2022 to 25/06/2023



NOTE: SCALES MAY VARY IN EACH GRAPH TO ENABLE TREND COMPARISON.  
Black line is 7 day moving average adjusted for bank holidays.  
Black dotted line is baseline.

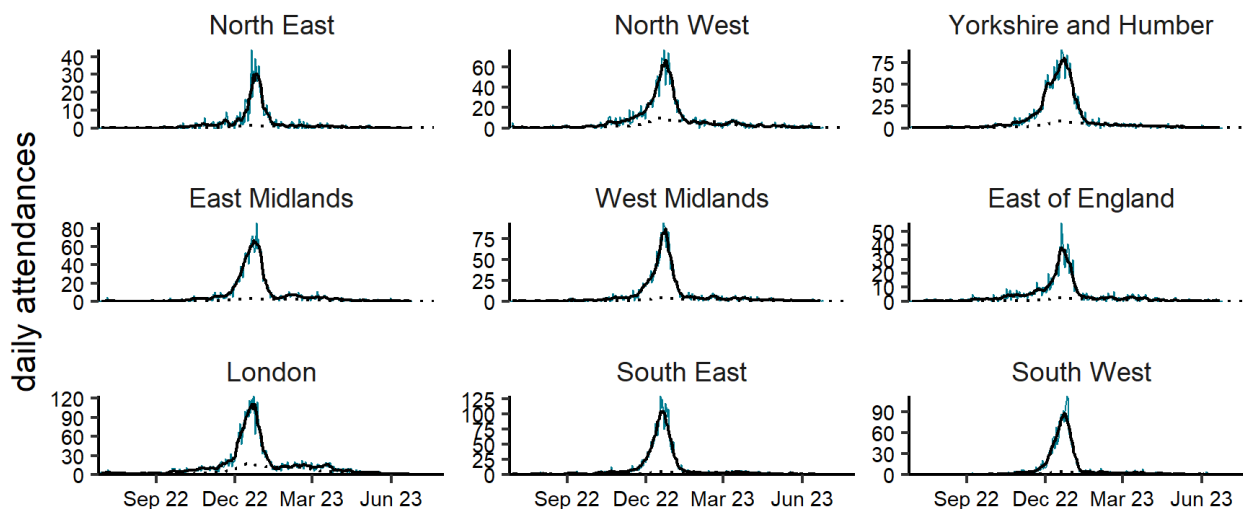
## Influenza-like illness

**Figure 5: Daily number of influenza-like illness ED attendances (and 7-day moving average adjusted for bank holidays), England (a) nationally, (b) by age and (c) by UKHSA Region.**



(c)

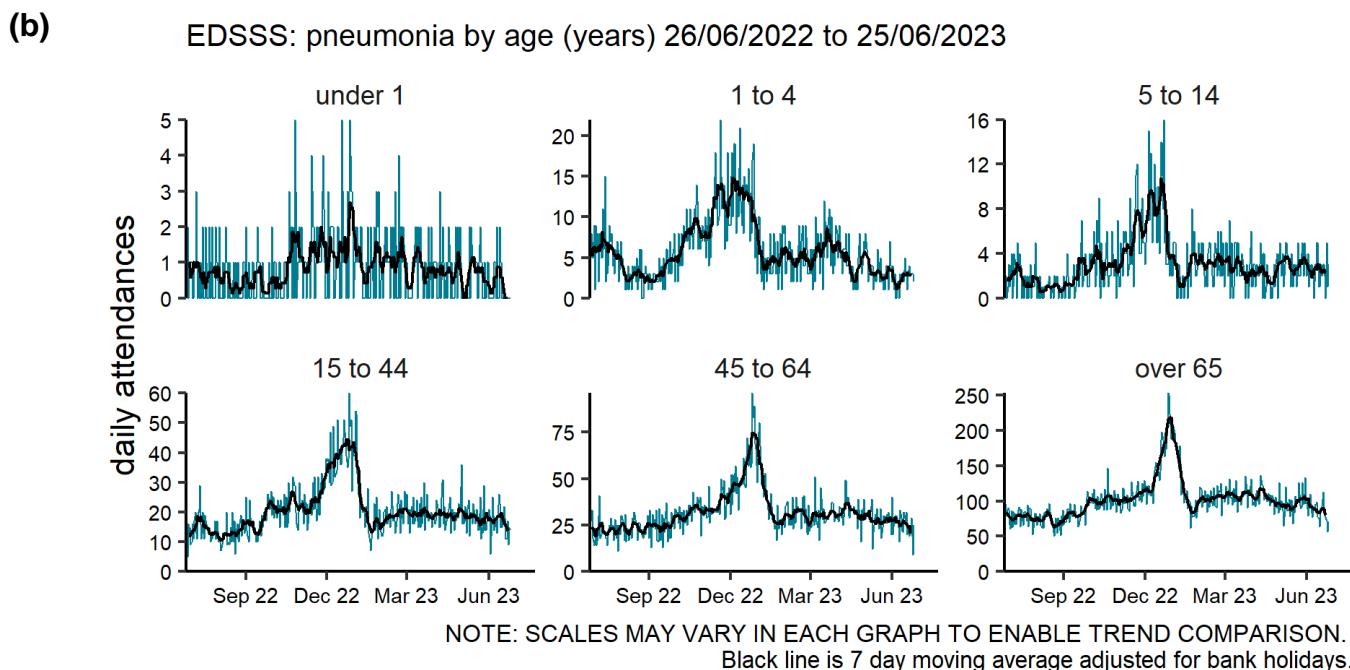
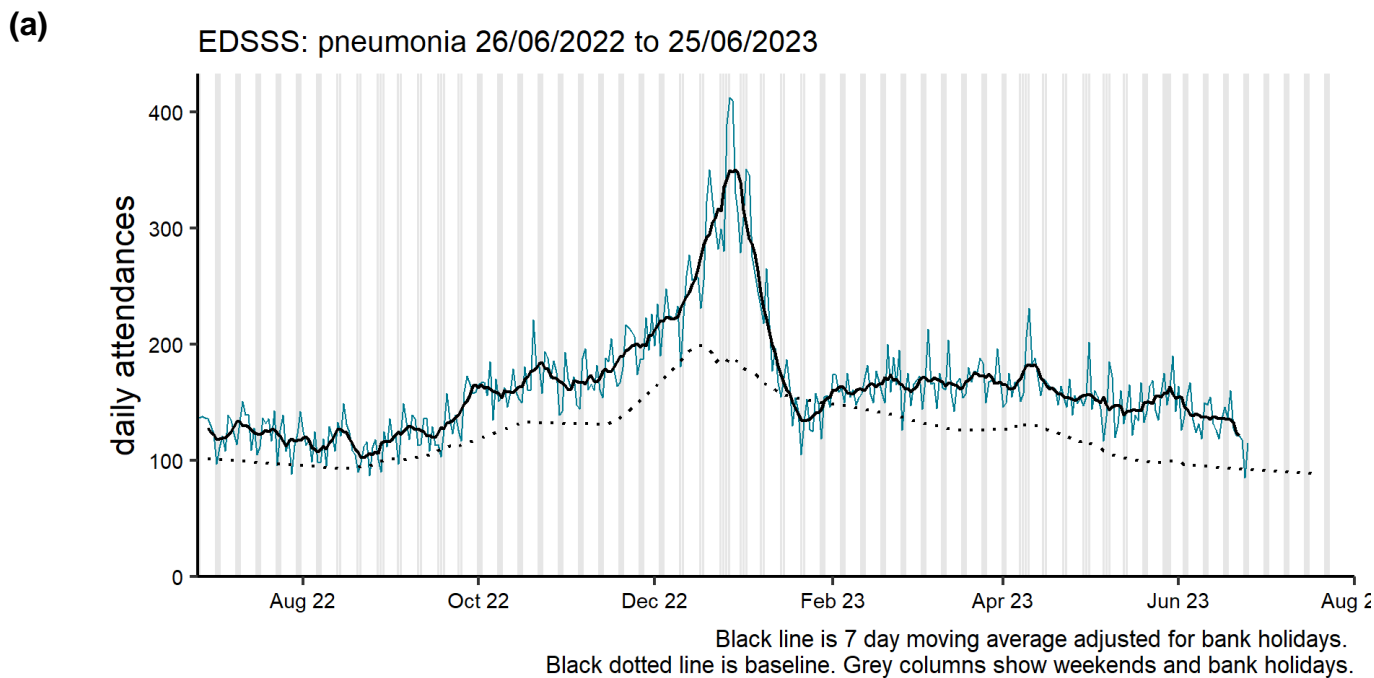
EDSSS: influenza-like illness by region 26/06/2022 to 25/06/2023



NOTE: SCALES MAY VARY IN EACH GRAPH TO ENABLE TREND COMPARISON.  
Black line is 7 day moving average adjusted for bank holidays.  
Black dotted line is baseline.

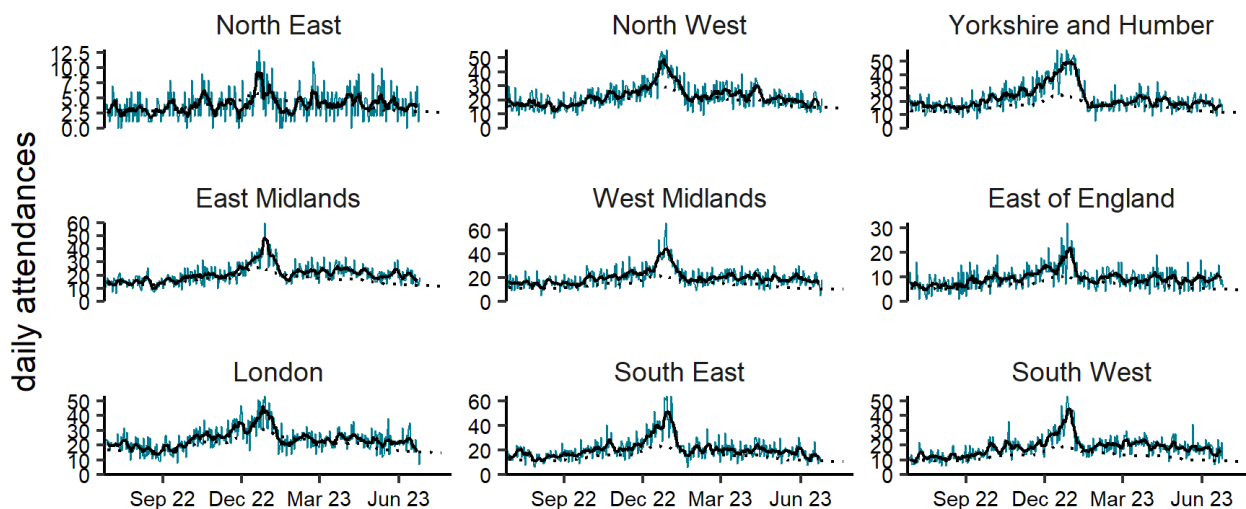
# Pneumonia

**Figure 6: Daily number of pneumonia ED attendances (and 7-day moving average adjusted for bank holidays), England (a) nationally, (b) by age and (c) by UKHSA Region.**



(c)

EDSSS: pneumonia by region 26/06/2022 to 25/06/2023

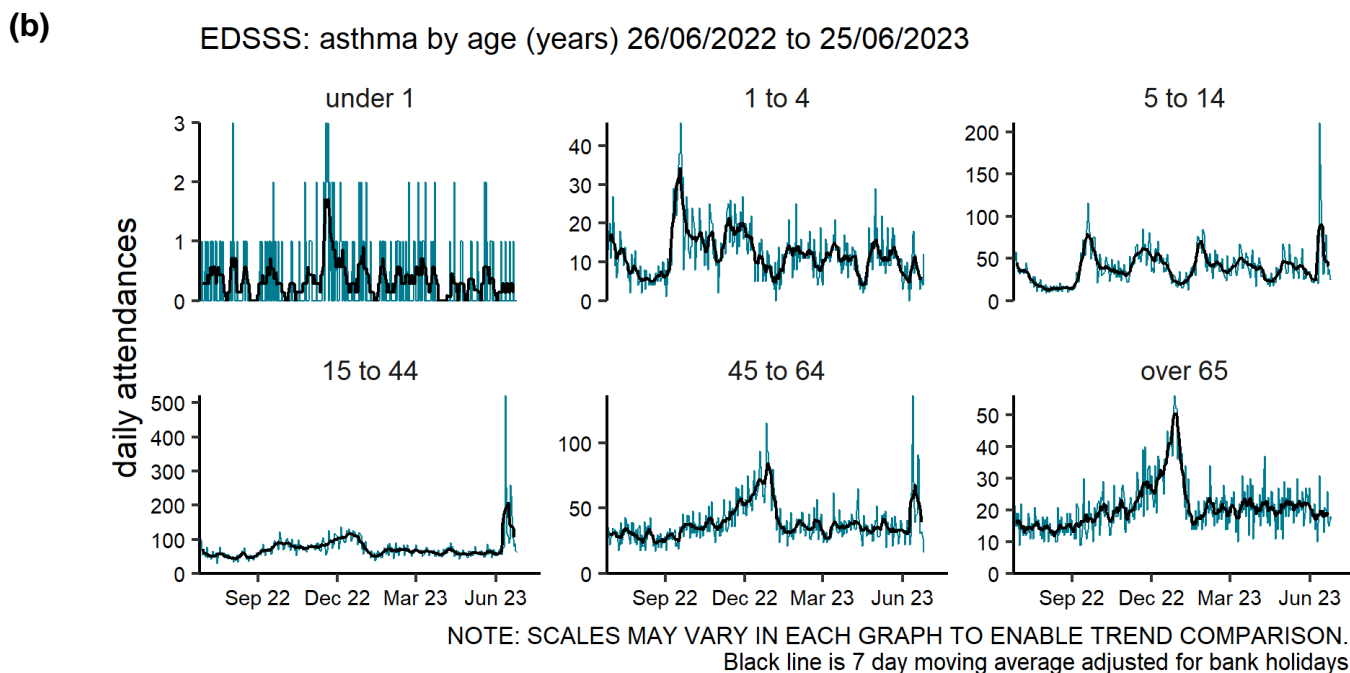
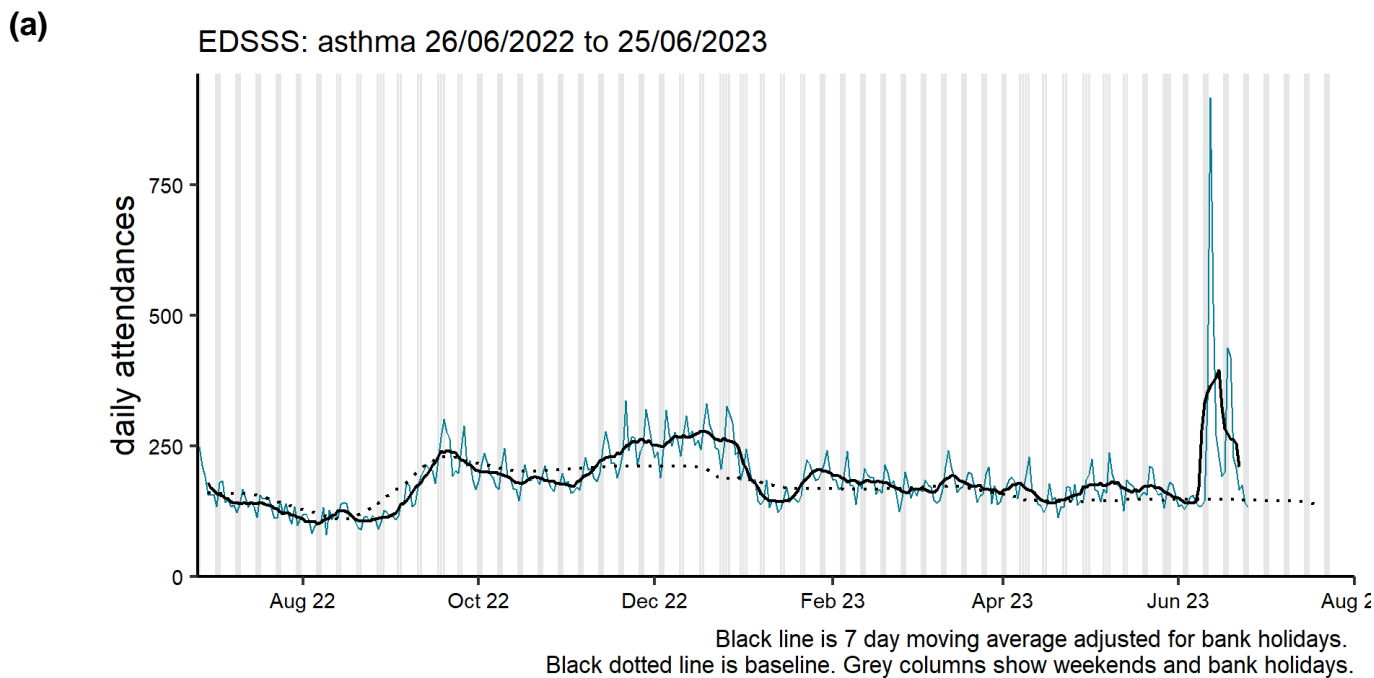


NOTE: SCALES MAY VARY IN EACH GRAPH TO ENABLE TREND COMPARISON.  
Black line is 7 day moving average adjusted for bank holidays.  
Black dotted line is baseline.



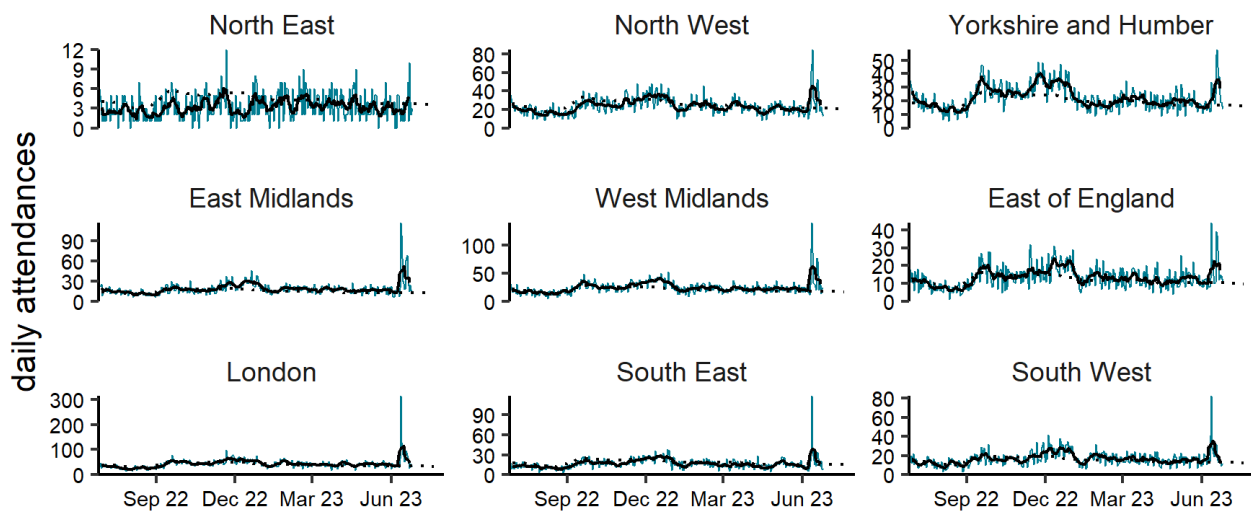
# Asthma

**Figure 7: Daily number of asthma ED attendances (and 7-day moving average adjusted for bank holidays), England (a) nationally, (b) by age and (c) by UKHSA Region.**



(c)

EDSSS: asthma by region 26/06/2022 to 25/06/2023

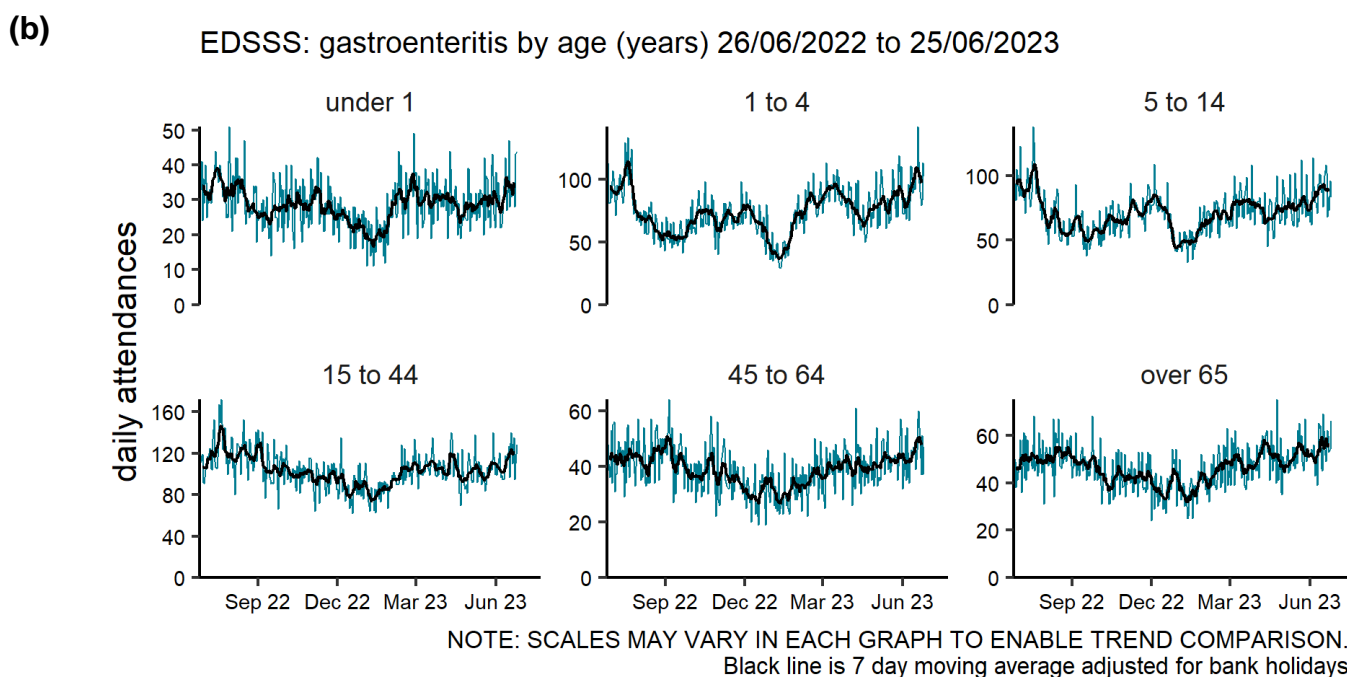
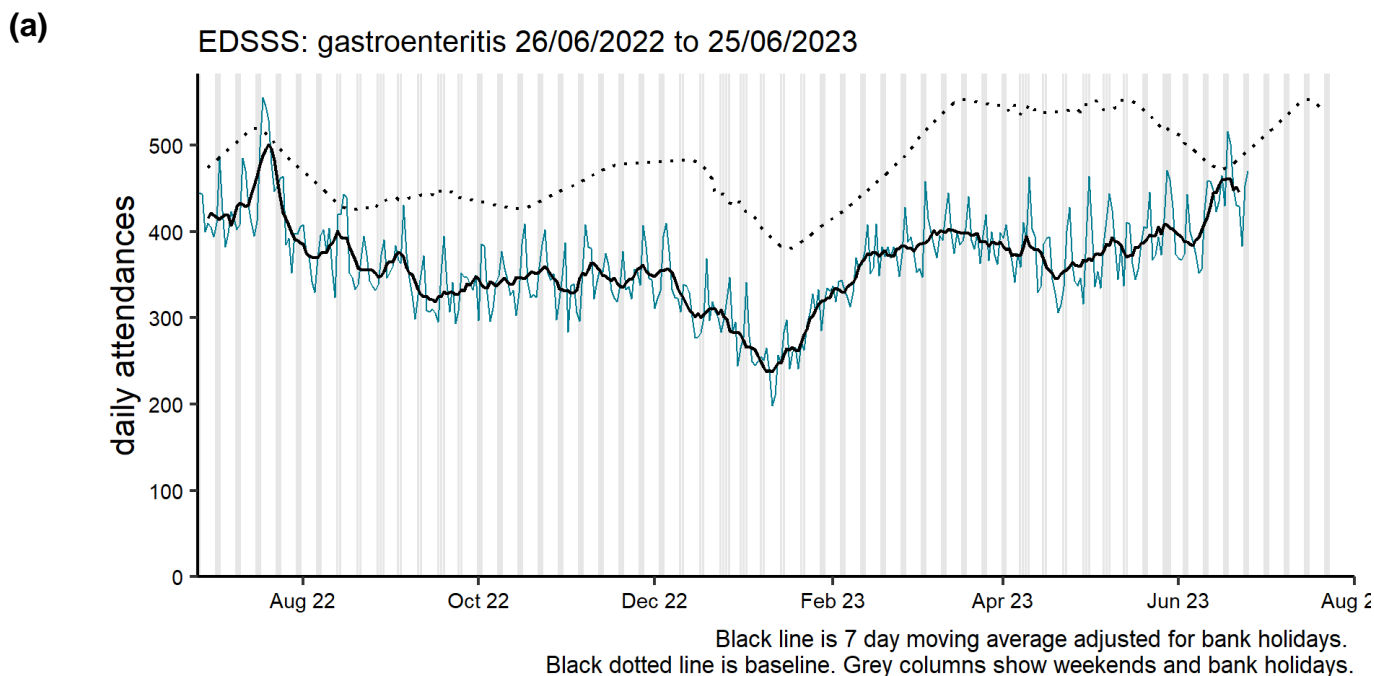


NOTE: SCALES MAY VARY IN EACH GRAPH TO ENABLE TREND COMPARISON.  
Black line is 7 day moving average adjusted for bank holidays.  
Black dotted line is baseline.

# Gastrointestinal conditions

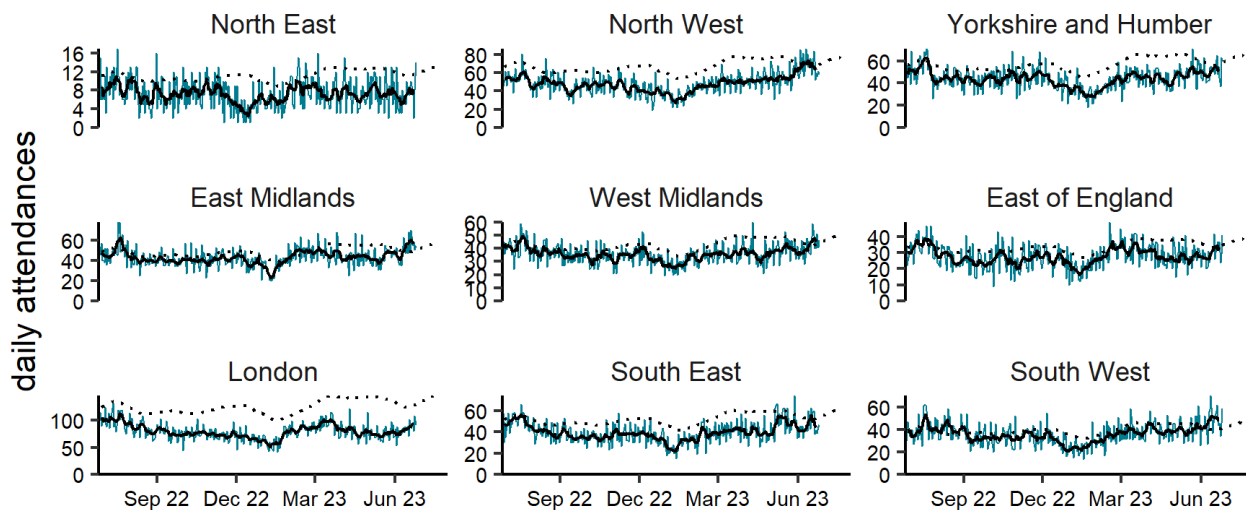
## Gastroenteritis

**Figure 8: Daily number of gastroenteritis ED attendances (and 7-day moving average adjusted for bank holidays), England (a) nationally, (b) by age and (c) by UKHSA Region.**



(c)

EDSSS: gastroenteritis by region 26/06/2022 to 25/06/2023

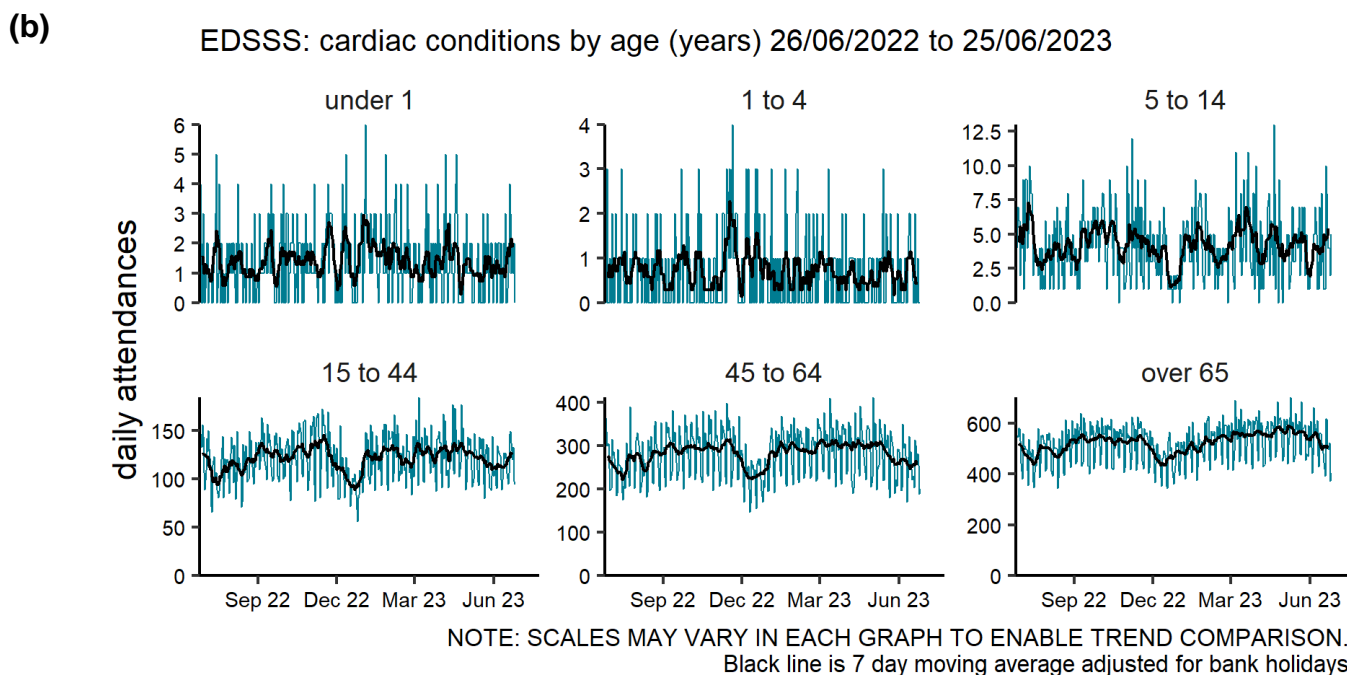
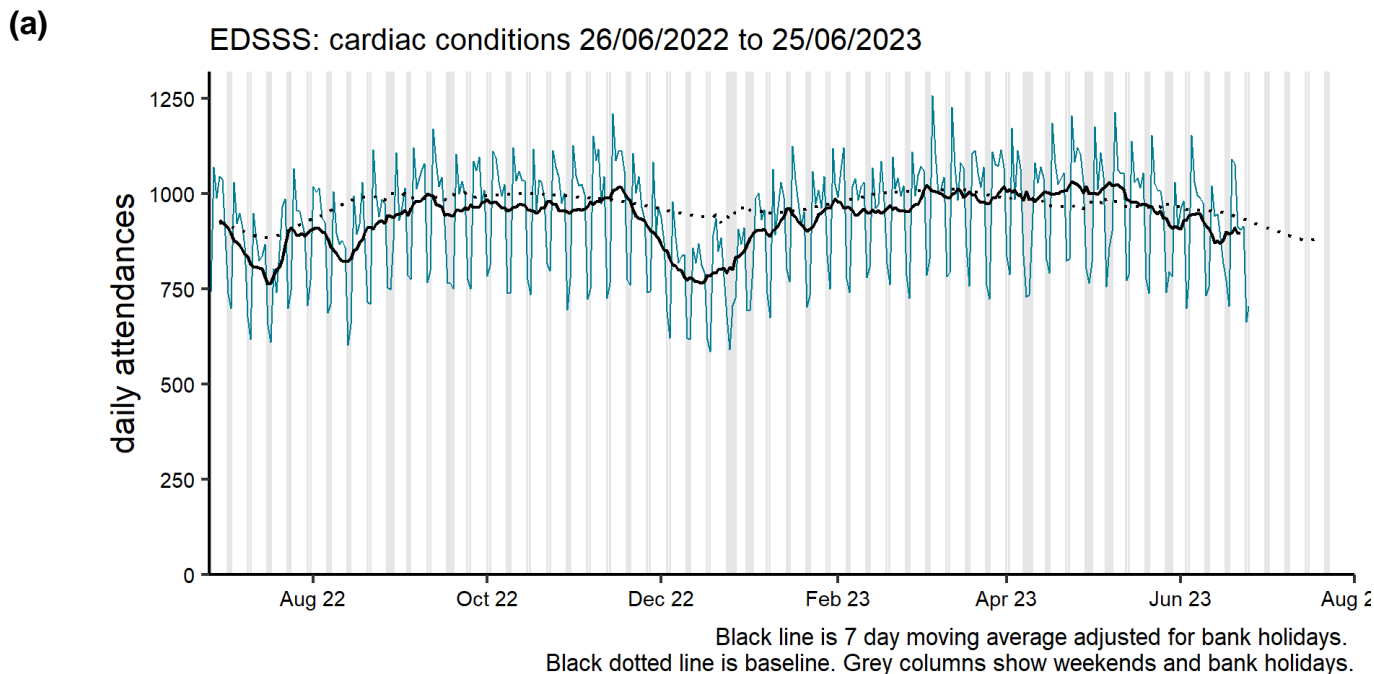


NOTE: SCALES MAY VARY IN EACH GRAPH TO ENABLE TREND COMPARISON.  
Black line is 7 day moving average adjusted for bank holidays.  
Black dotted line is baseline.

# Cardiac conditions

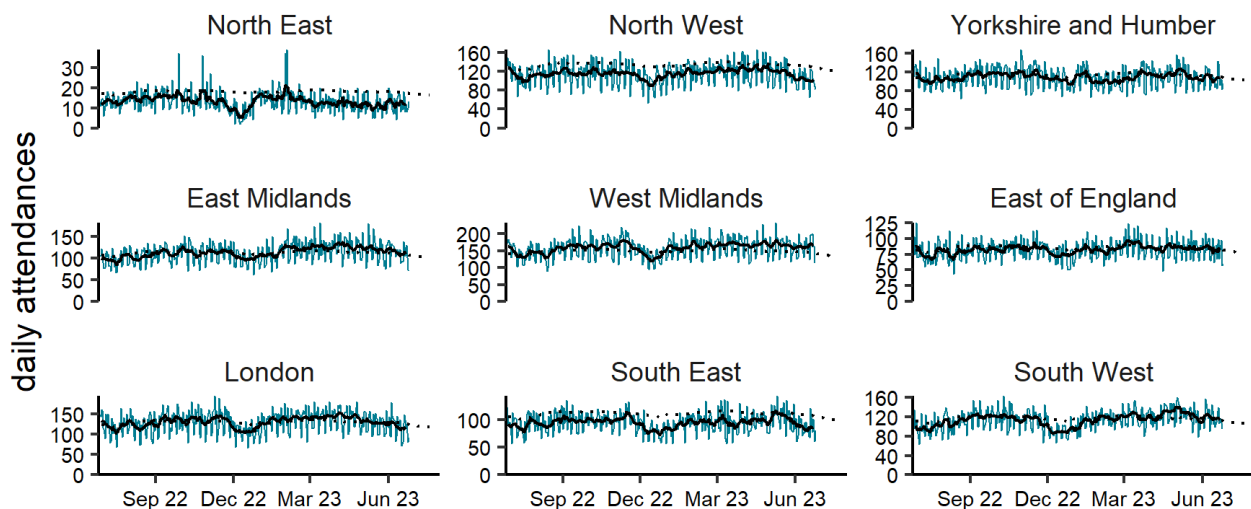
## Cardiac

**Figure 9: Daily number of cardiac ED attendances (and 7-day moving average adjusted for bank holidays), England (a) nationally, (b) by age and (c) by UKHSA Region.**



(c)

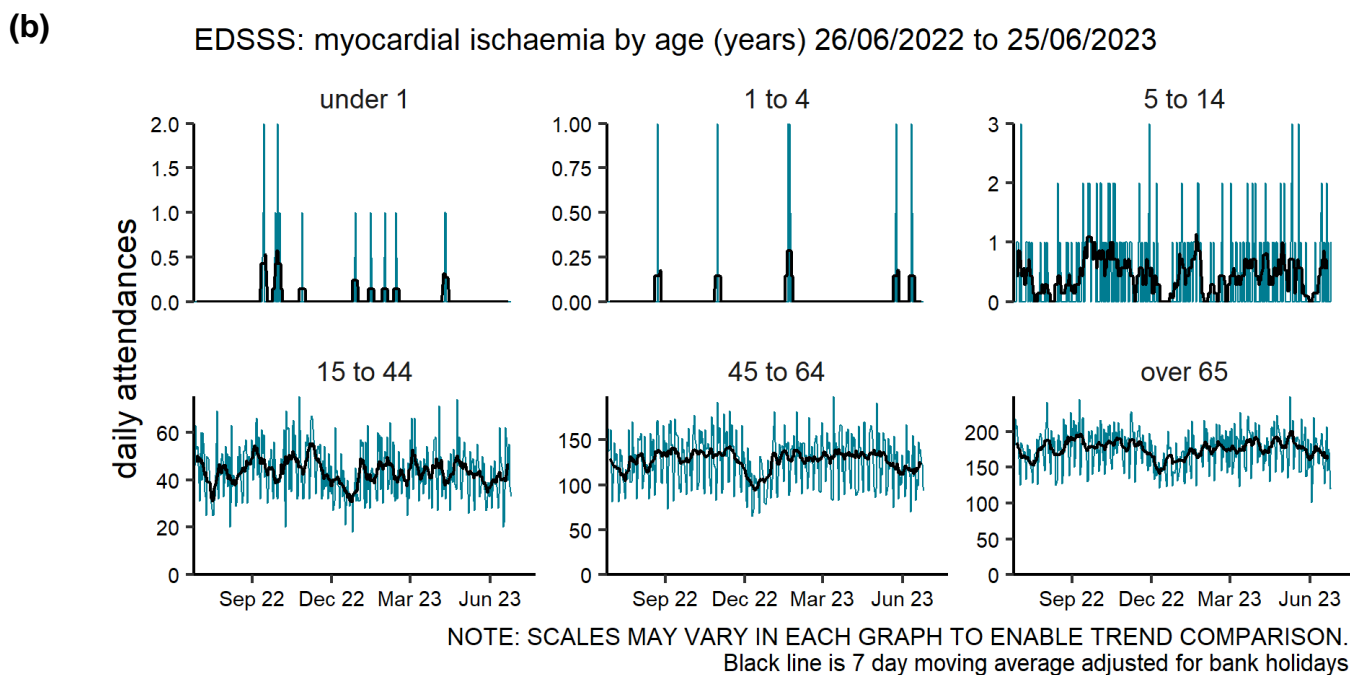
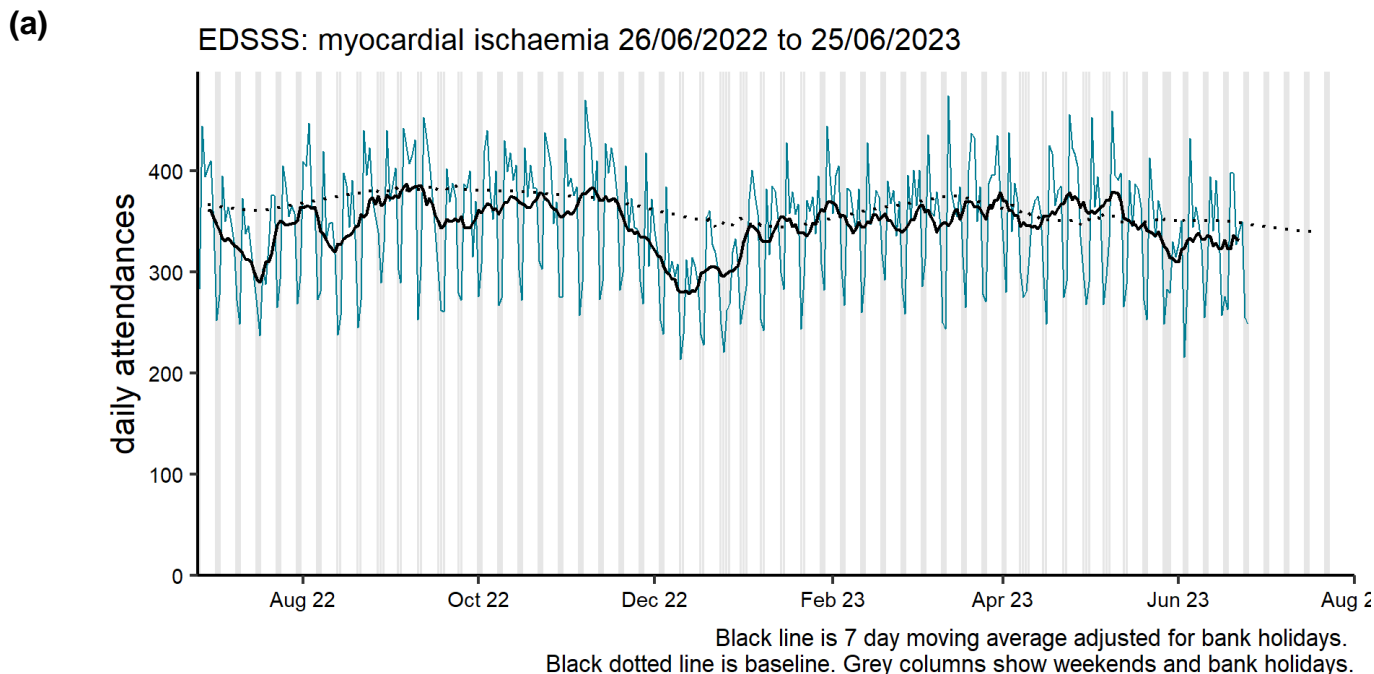
EDSSS: cardiac conditions by region 26/06/2022 to 25/06/2023

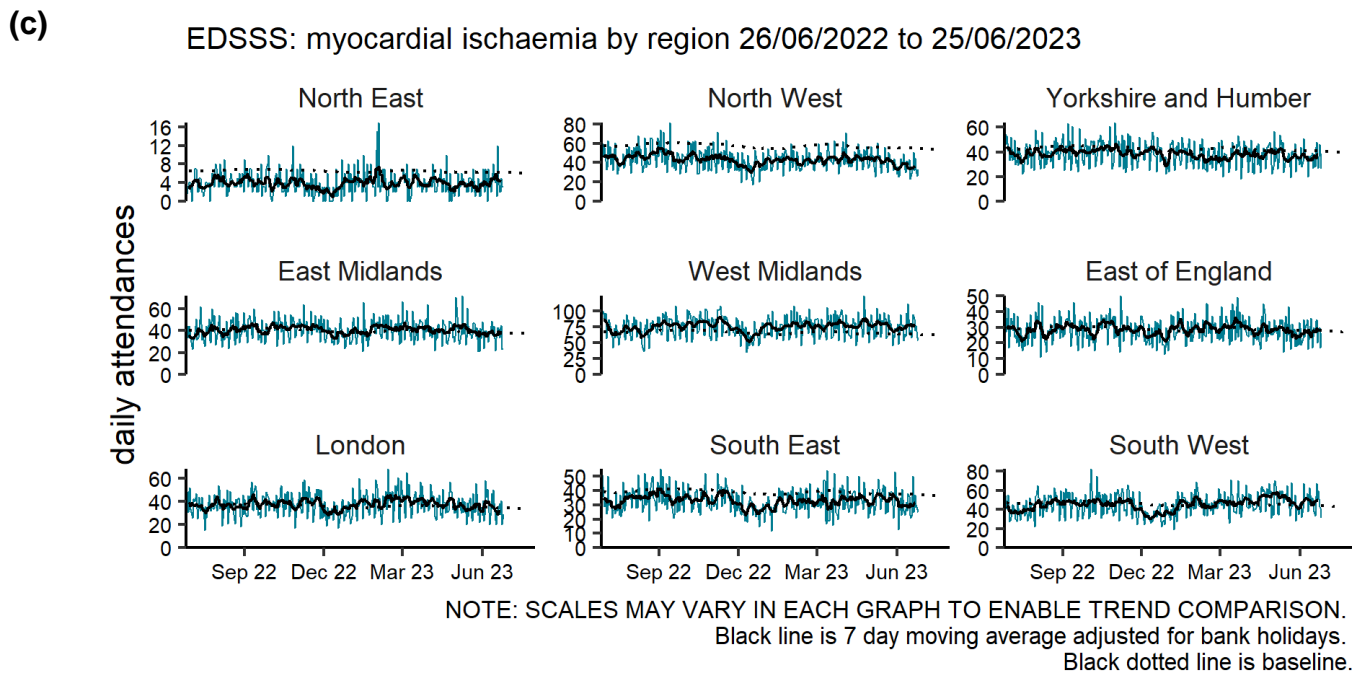


NOTE: SCALES MAY VARY IN EACH GRAPH TO ENABLE TREND COMPARISON.  
Black line is 7 day moving average adjusted for bank holidays.  
Black dotted line is baseline.

# Myocardial ischaemia

**Figure 10: Daily number of myocardial ischaemia ED attendances (and 7-day moving average adjusted for bank holidays), England (a) nationally, (b) by age and (c) by UKHSA Region.**



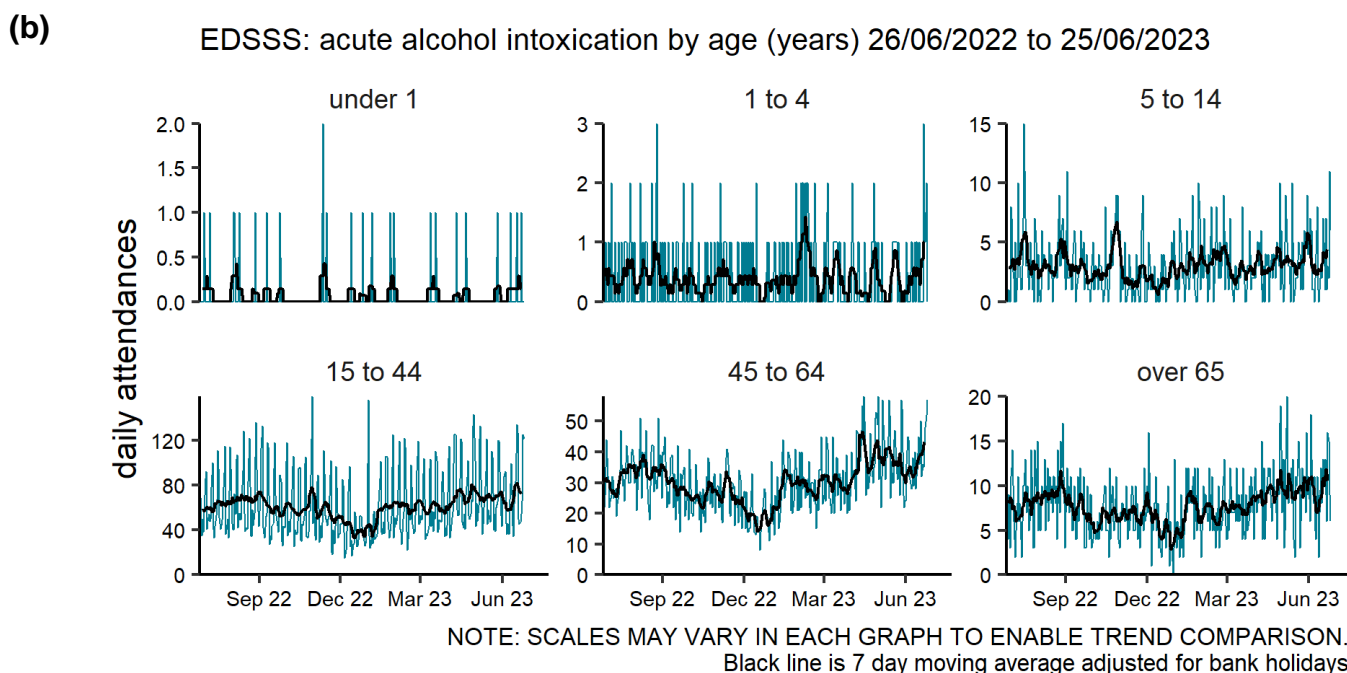
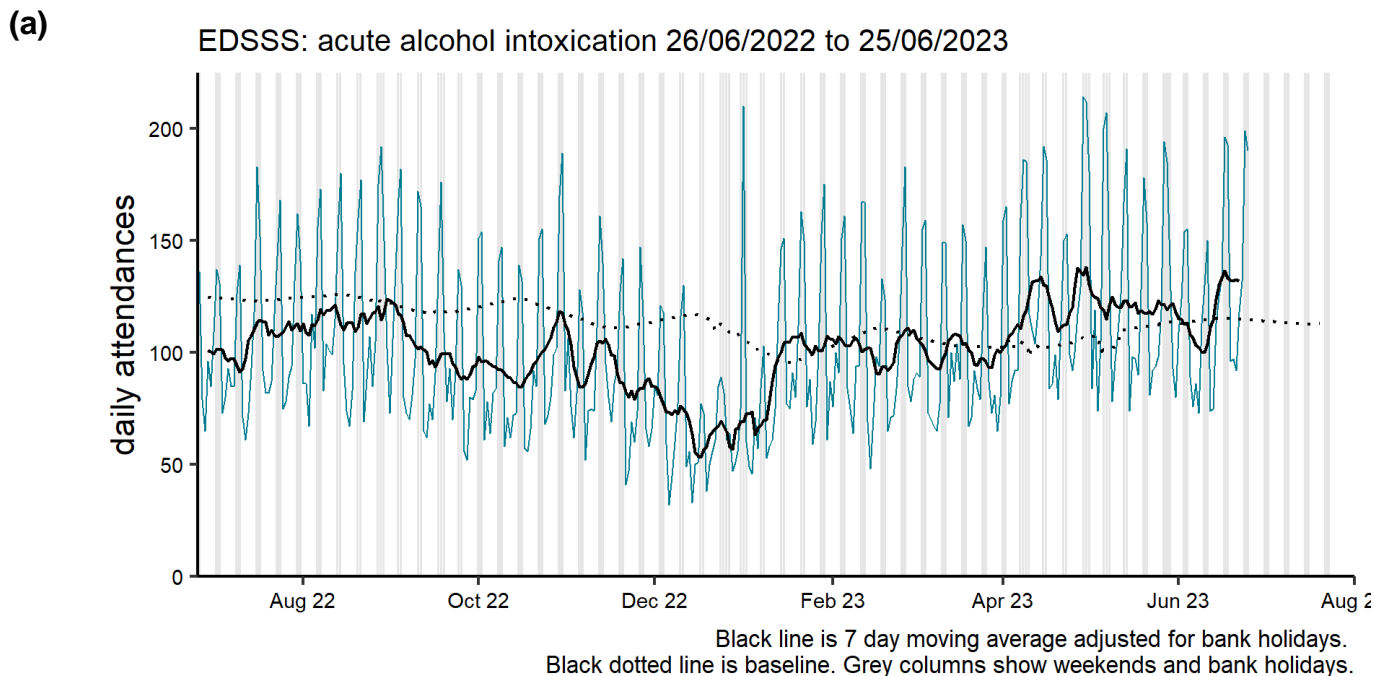


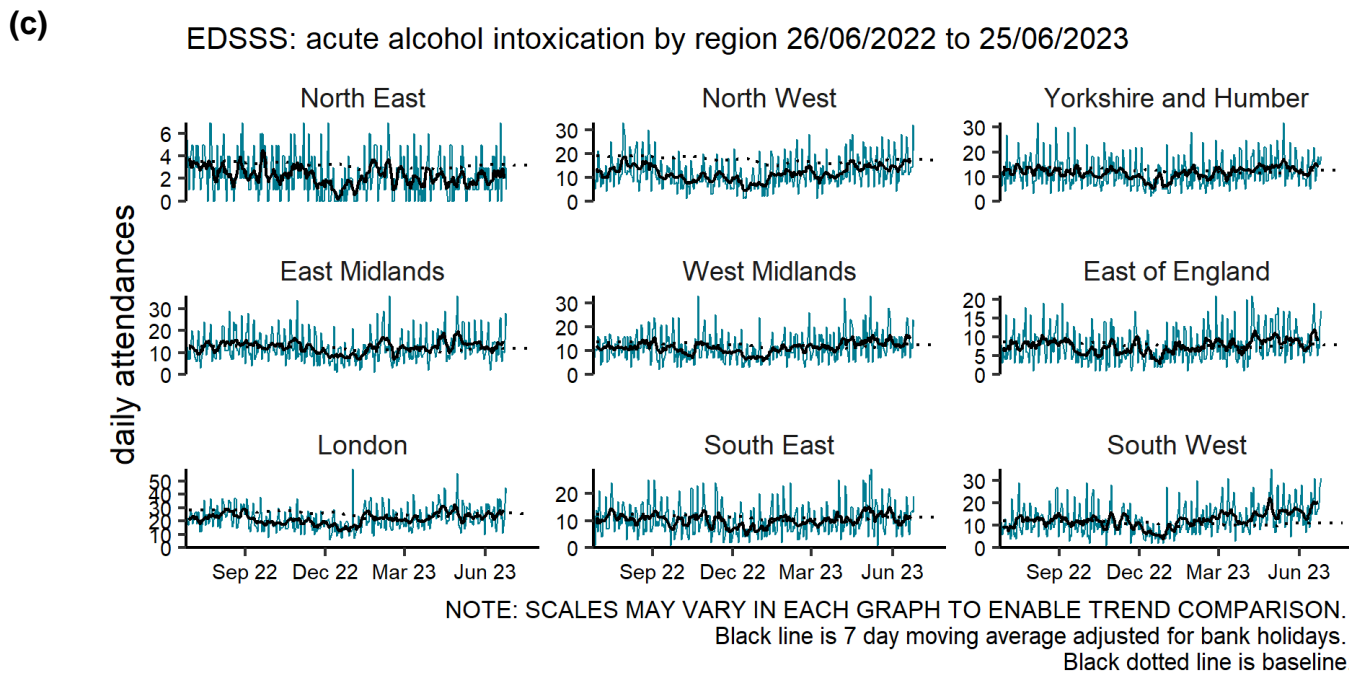


# Other conditions

## Acute alcohol intoxication

**Figure 11: Daily number of acute alcohol intoxication ED attendances (and 7-day moving average adjusted for bank holidays), England (a) nationally, (b) by age and (c) by UKHSA Region.**

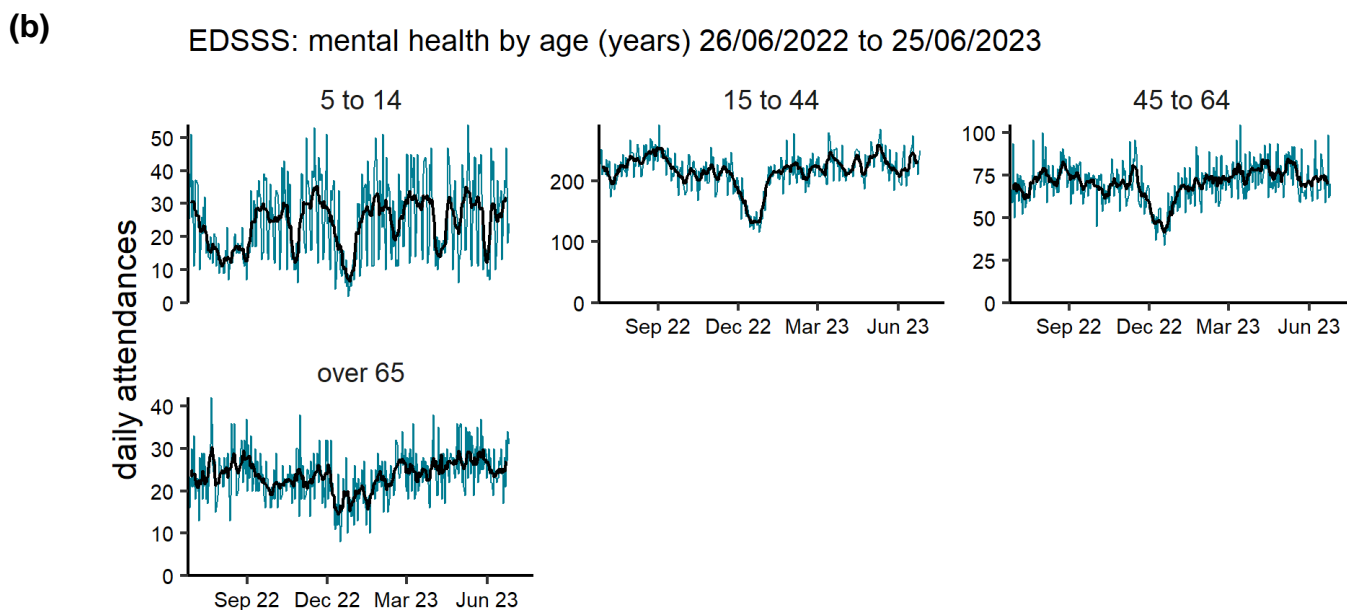
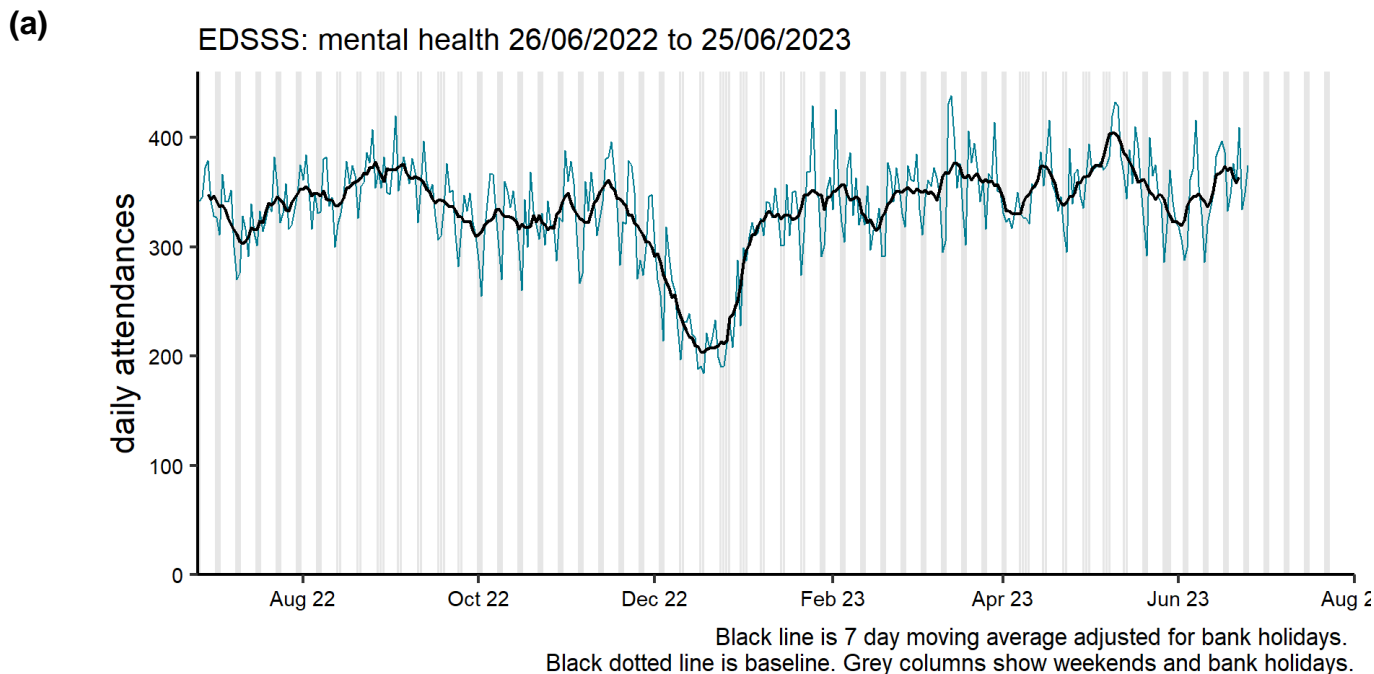




## Mental health

**Figure 12: Daily number of mental health<sup>3</sup> ED attendances (and 7-day moving average adjusted for bank holidays), England (a) nationally, (b) by age and (c) by UKHSA Region.**

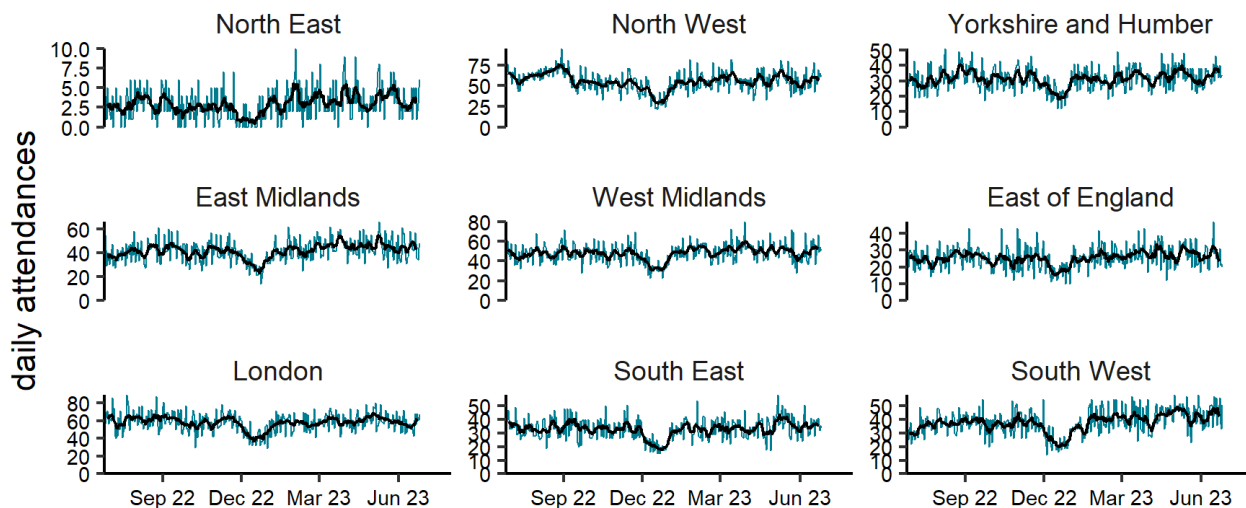
<sup>3</sup> mental health attendances reported here are those with a primary diagnosis in the ECDS mental health diagnosis grouping. Attendances where the primary diagnosis relates to overdose, alcohol use or self harm are not included.



NOTE: SCALES MAY VARY IN EACH GRAPH TO ENABLE TREND COMPARISON.  
Black line is 7 day moving average adjusted for bank holidays.

(c)

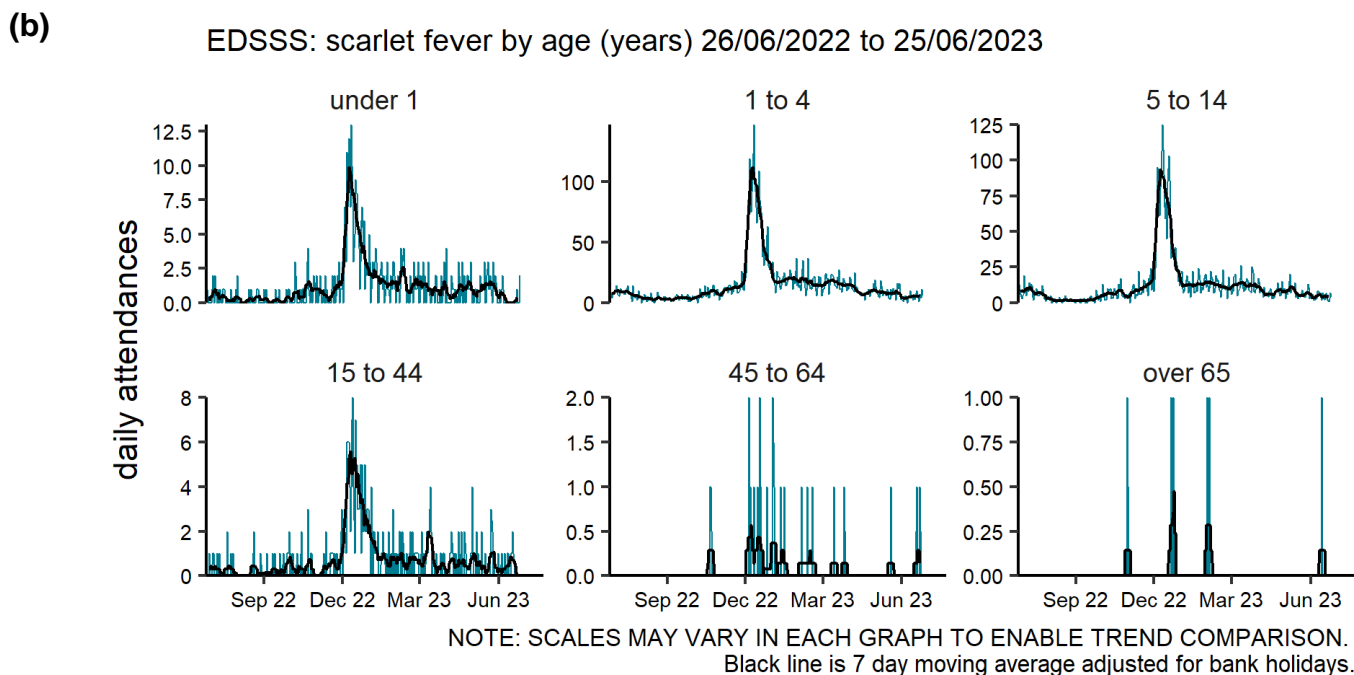
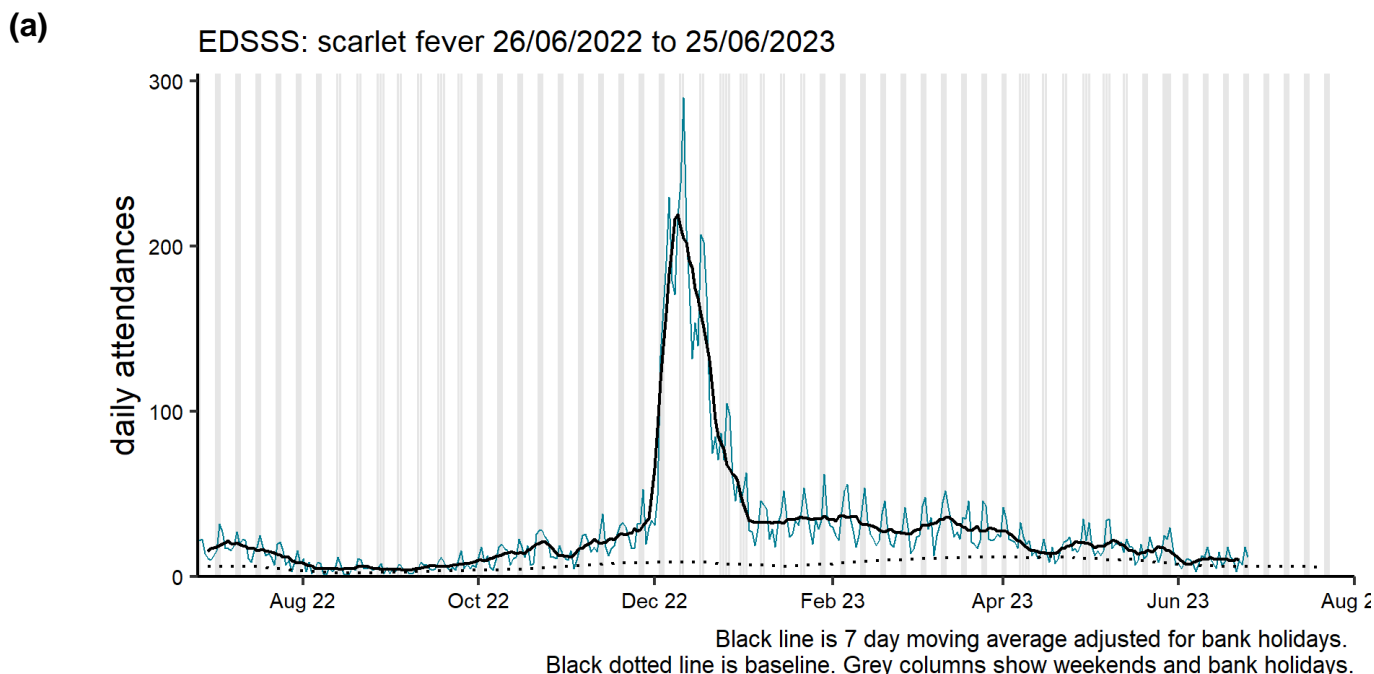
EDSSS: mental health by region 26/06/2022 to 25/06/2023



NOTE: SCALES MAY VARY IN EACH GRAPH TO ENABLE TREND COMPARISON.  
Black line is 7 day moving average adjusted for bank holidays.  
Black dotted line is baseline.

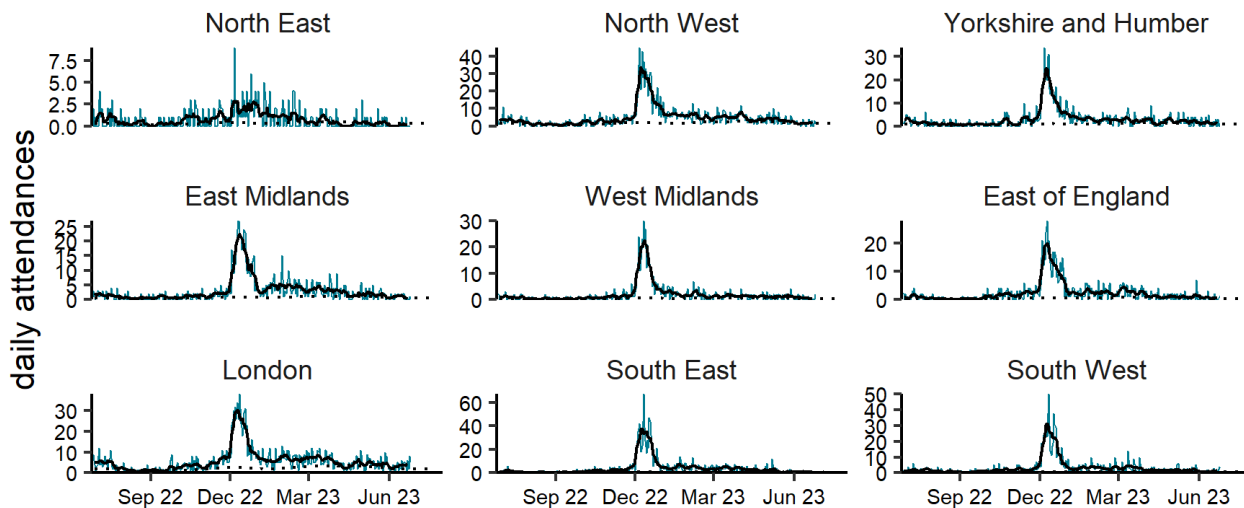
# Scarlet fever

**Figure 13: Daily number of scarlet fever ED attendances (and 7-day moving average adjusted for bank holidays), England (a) nationally, (b) by age and (c) by UKHSA Region.**



(c)

EDSSS: scarlet fever by region 26/06/2022 to 25/06/2023



NOTE: SCALES MAY VARY IN EACH GRAPH TO ENABLE TREND COMPARISON.  
Black line is 7 day moving average adjusted for bank holidays.  
Black dotted line is baseline.

## Seasonal environmental conditions

UKHSA and the Met Office operate a weather-health alert system that includes both heat and cold weather alert periods. Syndromic indicators are used to monitor the impact of both extreme hot and cold weather in England during these periods and will be included below (where an appropriate syndromic indicator is available).

[Cold weather alert](#) period: 1 November to 31 March

[Heat-Health Alert](#) period: 1 June to 30 September

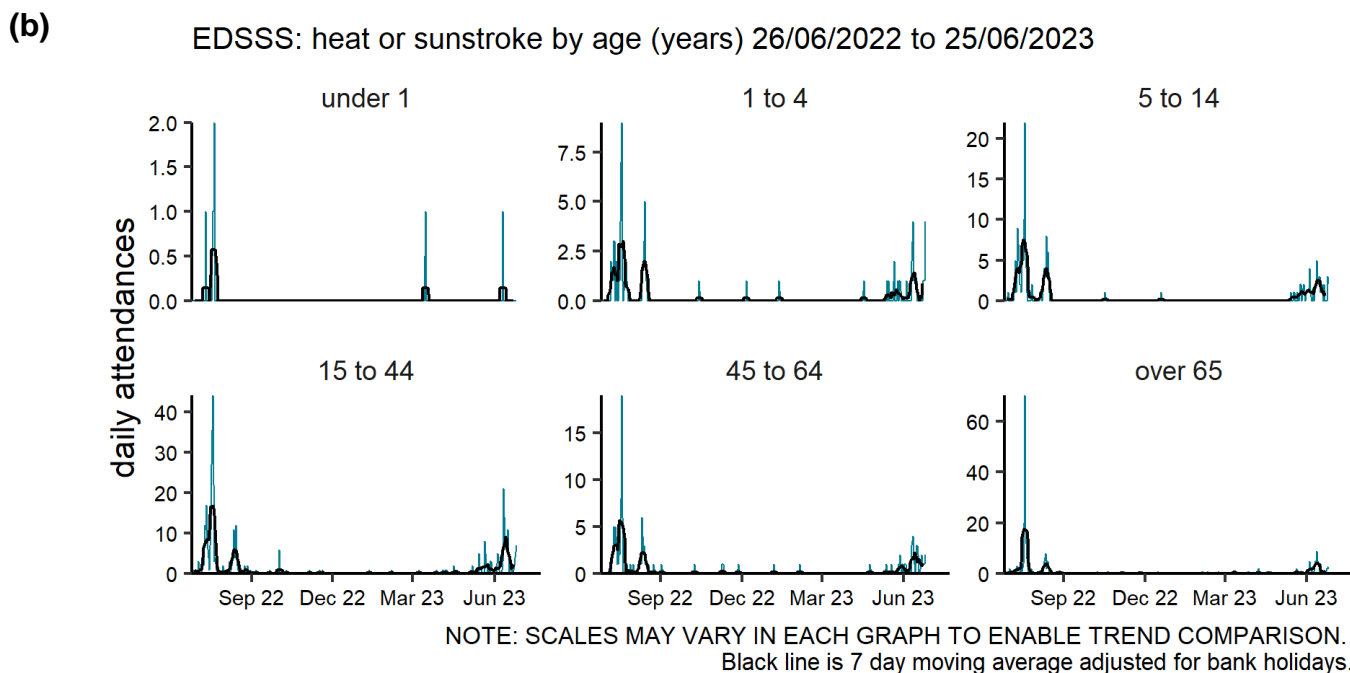
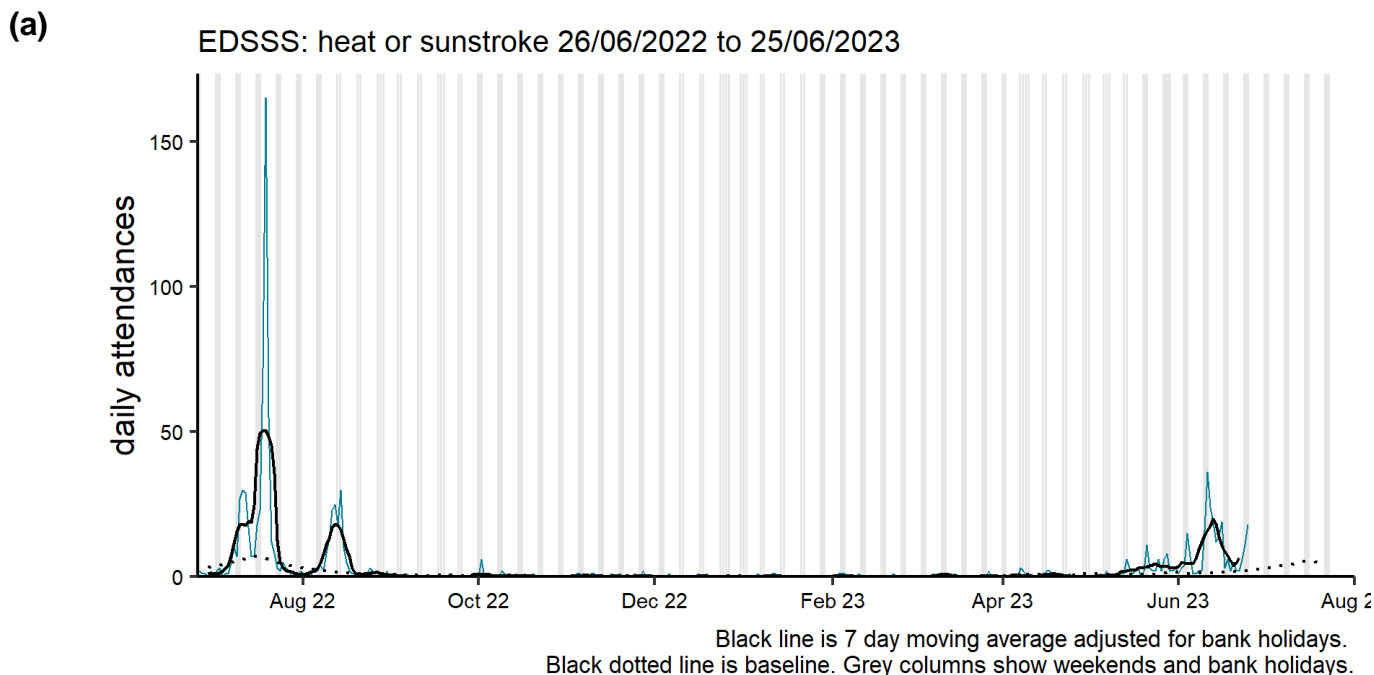
Highest weather alert level during the current reporting week:

***Level Yellow - Hot weather response.***

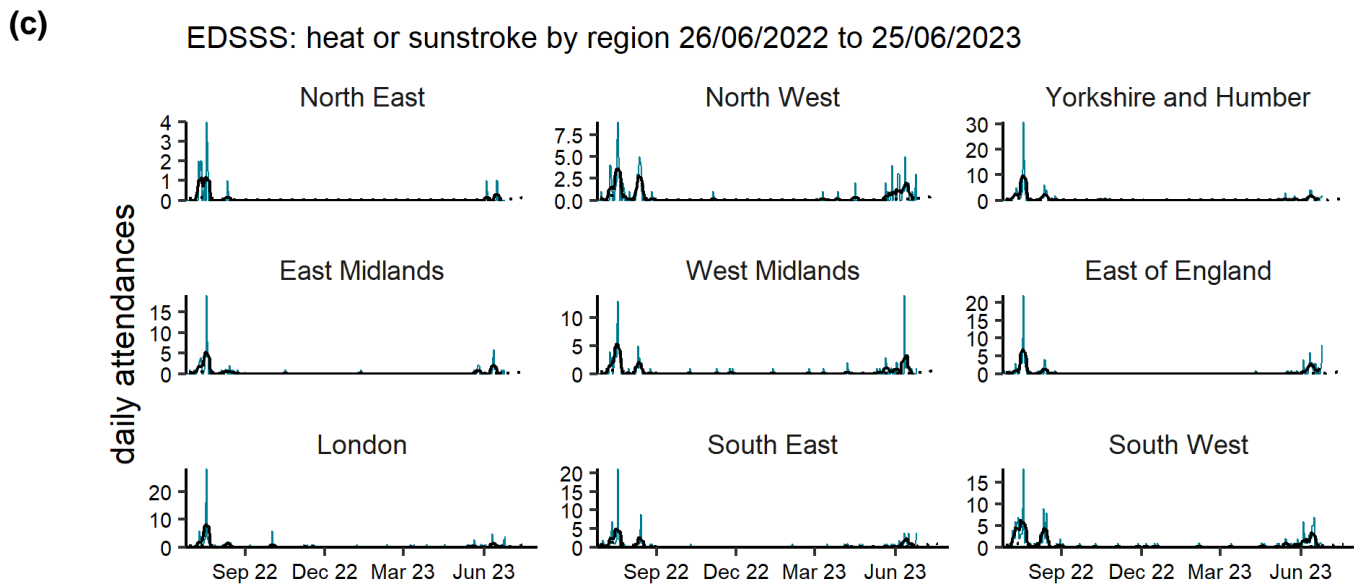
## Heat-health alerts in place

## Heat or sunstroke

**Figure 14: Daily number of heat or sunstroke ED attendances (and 7-day moving average adjusted for bank holidays), England (a) nationally, (b) by age and (c) by UKHSA Region.**







NOTE: SCALES MAY VARY IN EACH GRAPH TO ENABLE TREND COMPARISON.  
Black line is 7 day moving average adjusted for bank holidays.  
Black dotted line is baseline.

## Notes and caveats

The following additional caveats apply to the UKHSA emergency department syndromic surveillance system:

- the data presented are based on a national syndromic surveillance system:
  - should be used to monitor trends not to estimate numbers of ‘cases’
  - an automated daily transfer of anonymised ED data is received from NHS Digital, from the [Emergency Care Data Set](#) (ECDS)
  - not all EDs currently provide data on a daily basis, EDs are eligible for inclusion in this report only where:
    - data relates to attendances at a type 01 ED
    - data for 7 of the 7 most recent days was received
    - data for those days was received within 2 calendar days of the patient arrival
  - when an ED meets these criteria, all historical data from that ED is included
  - EDs included each week is likely to change, which will affect the historical data inclusion
  - national coverage each week is included in **Table 2**,
  - the number of EDs in each region area is described in **Table 3**
- individual EDs will not be identified in these bulletins
- some syndromic indicators are hierarchical:
  - acute respiratory infections includes:
    - COVID-19-like
    - acute bronchitis or bronchiolitis
    - other and non-specific acute respiratory infections
    - influenza-like illness
    - pneumonia
  - cardiac conditions includes:
    - myocardial ischaemia
    - other and non-specific cardiac conditions
- baselines:
  - were last remodelled January 2023
  - are constructed from historical data since April 2018
  - represent seasonally expected levels of activity
  - take account of any known substantial changes in data collection, population coverage or reporting practices:
    - the COVID-19 pandemic period is excluded, to show seasonally expected levels if COVID-19 had not occurred
  - may be remodelled to include the impacts seen during periods of the COVID-19 pandemic if/when appropriate due to introduction of large scale public health interventions which may affect ED attendance levels

## Acknowledgements

We are grateful to the clinicians in each ED and other staff within each Trust for their continued involvement in the EDSSS.

We thank the Royal College of Emergency Medicine, NHS Digital and NHS England for their support in the development of national EDSSS, using anonymised data collection from ECDS.

# About the UK Health Security Agency

UKHSA is responsible for protecting every member of every community from the impact of infectious diseases, chemical, biological, radiological and nuclear incidents and other health threats. We provide intellectual, scientific and operational leadership at national and local level, as well as on the global stage, to make the nation health secure.

UKHSA is an executive agency, sponsored by the Department of Health and Social Care.

[www.gov.uk/government/organisations/uk-health-security-agency](http://www.gov.uk/government/organisations/uk-health-security-agency)

© Crown copyright 2023  
Version: ED-2

Prepared by: Real-time Syndromic Surveillance Team  
For queries relating to this document, please contact: [syndromic.surveillan@ukhsa.gov.uk](mailto:syndromic.surveillan@ukhsa.gov.uk)

Published: June 2023



You may re-use this information (excluding logos) free of charge in any format or medium, under the terms of the Open Government Licence v3.0. To view this licence, visit [OGL](https://www.ogilicence.gov.uk). Where we have identified any third party copyright information you will need to obtain permission from the copyright holders concerned.



UKHSA supports the UN Sustainable Development Goals

