

# Herbalife<sup>🌿</sup>

## Solutions to Challenges in Food Production

June 21<sup>st</sup> 2023





**THE WALL STREET JOURNAL.**  
 English Edition | Print Edition | Video | Audio | Latest Headlines | More

Home | World | U.S. | Politics | Economy | **Business** | Tech | Markets | Opinion | Books & Arts | Real Estate | Life & Work | Style | Sports

RAINE | A Year of War | Shifting Front Lines | How It Changed the World | War's Toll | 21st Century Warfare | Russian Oil | NATO | Defiance and Hope

**BUSINESS**

## Ukraine War Sparks Global Scramble for Cooking Oils

Sunflower oil shortages have triggered a domino effect, with prices of rapeseed, palm and olive oils soaring as food makers seek alternatives

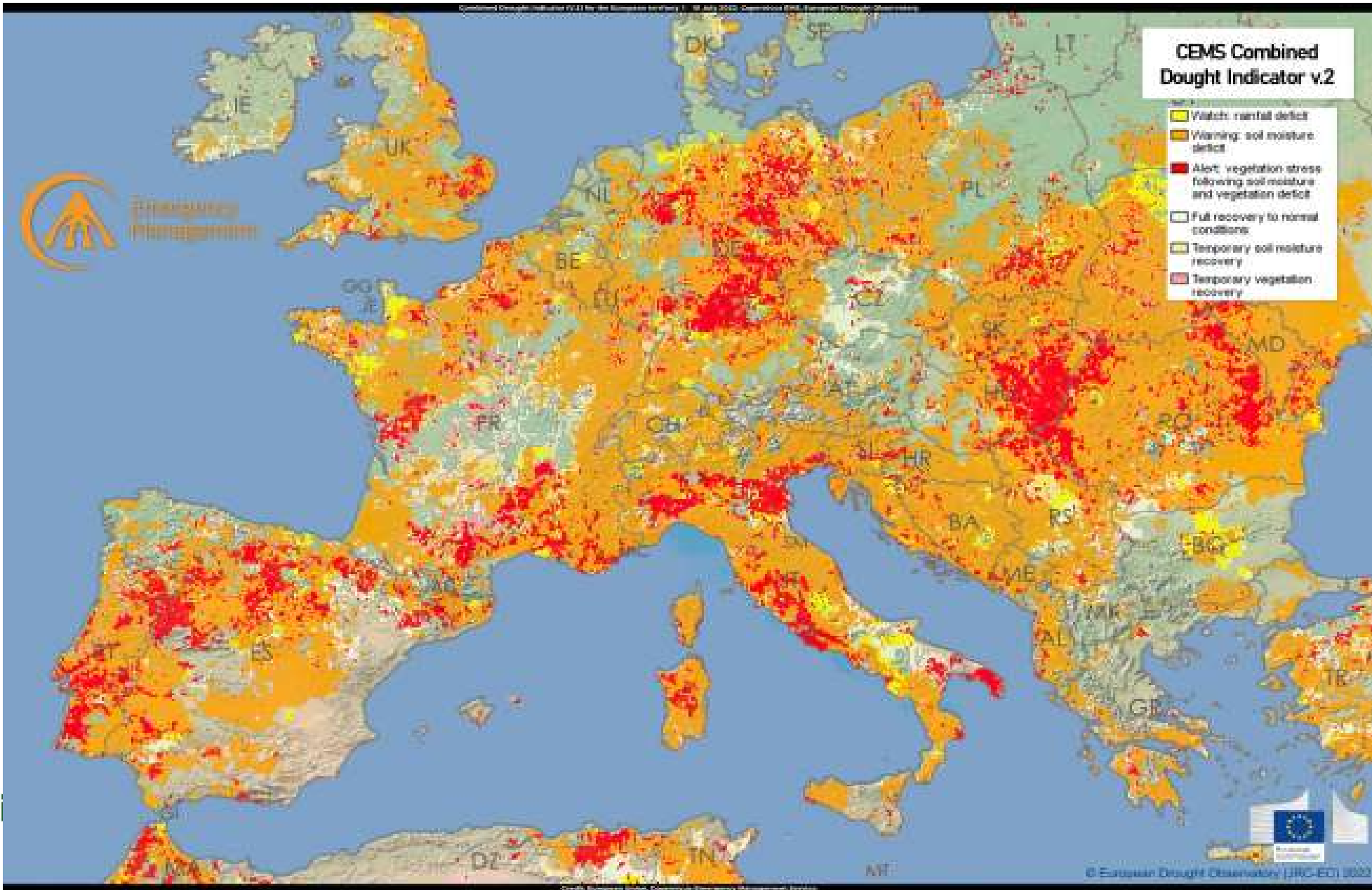
NASA  
key  
climate  
data

The screenshot shows the NASA Climate Change website with the following data points:

Metric	Value	Unit	Change
Carbon Dioxide	419	parts per million (current)	+
Global Temperature	1.01	°C since 1880	+
Arctic Sea Ice Extent	13	percent per decade since 1979	+
Ice Sheets	427	billion metric tons per year	+
Sea Level	4	inches since January 1993	+
Ocean Warming	337	zettajoules since 1955	+

Below the data, there is a section titled "News & Features" with a "Herbalife" logo partially visible on the left.

Herbalife



Summer 2022

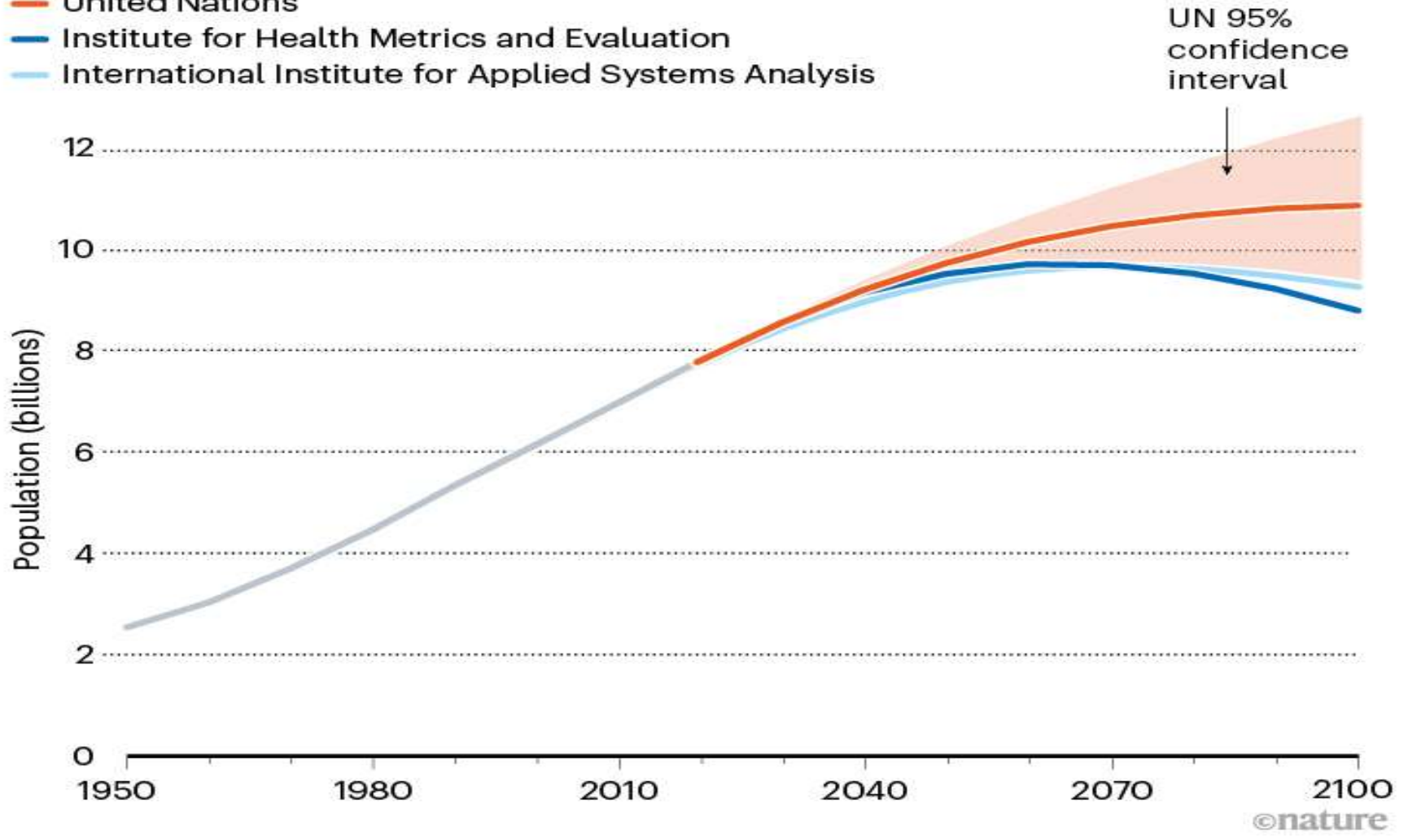
Herbal

# PEAK PEOPLE

The United Nations projects that global population will reach close to 11 billion by 2100, significantly higher than estimates from two other organizations.

## Projection

- United Nations
- Institute for Health Metrics and Evaluation
- International Institute for Applied Systems Analysis

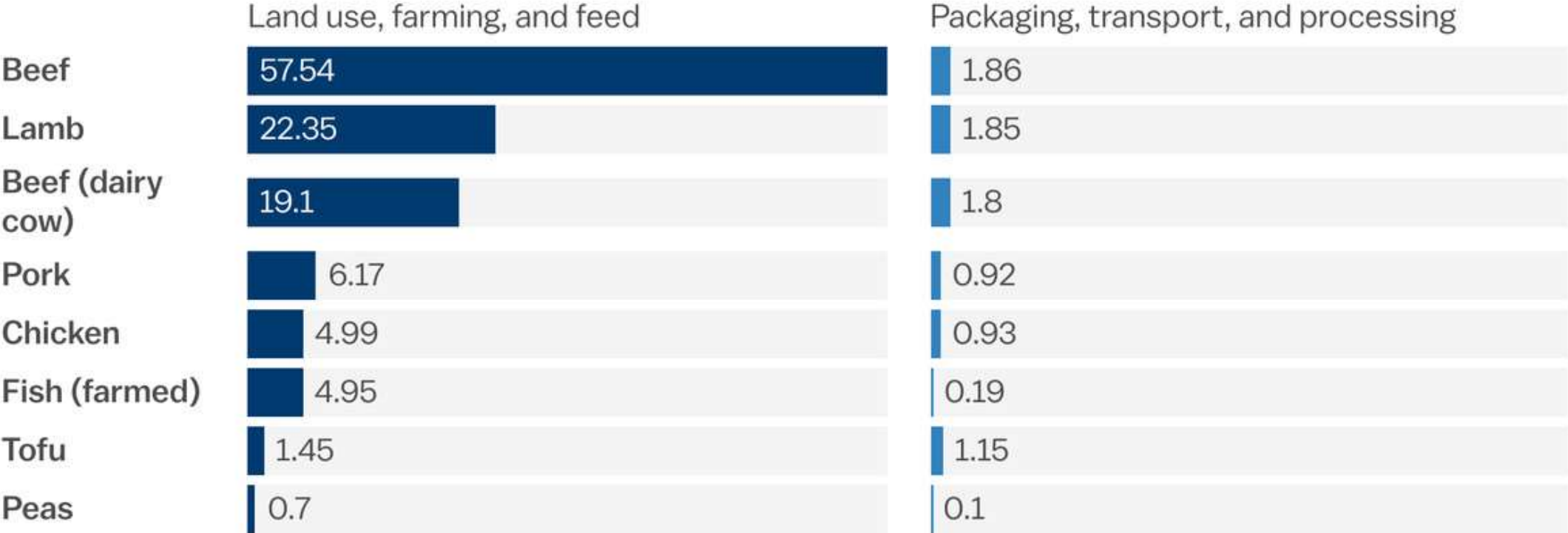


Population continues to grow...



# Meat consumption is associated with highest CO2 Emissions

CO2-equivalent emissions in kilograms, per kg of product



Source: Joseph Poore and Thomas Nemecek (2018)

### Percent of obese adults (Body Mass Index of 30+)



# 1990



### Percent of obese adults (Body Mass Index of 30+)



# 2018





**VS**

