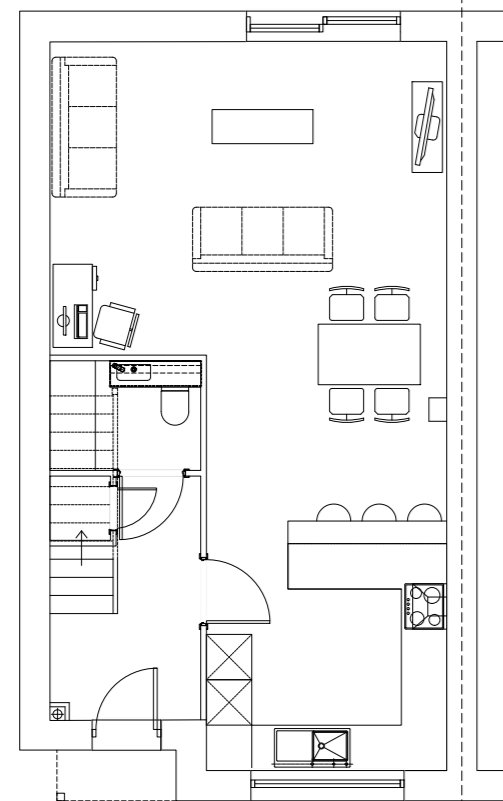


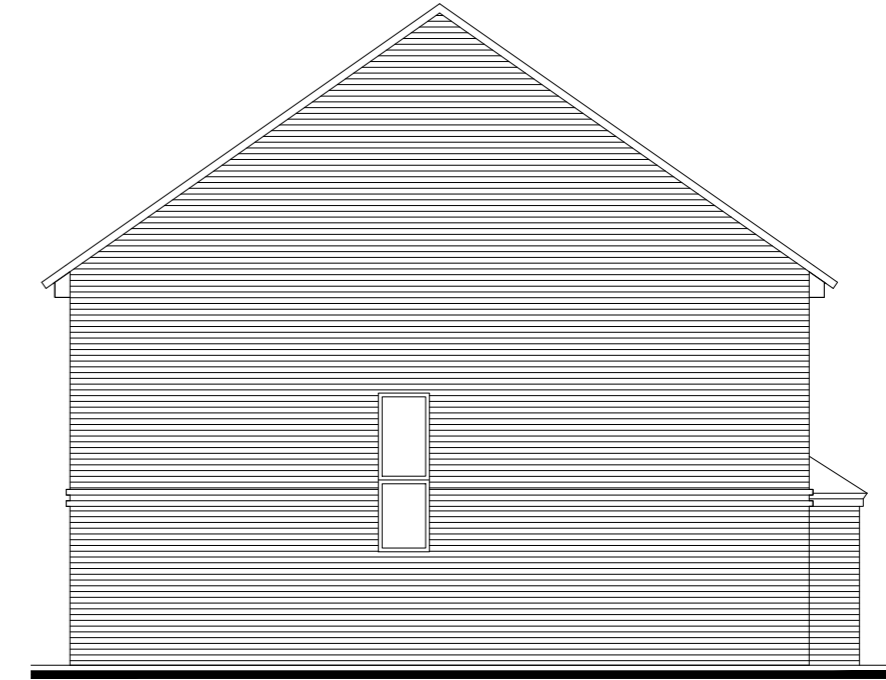
01 Proposed First Floor Plan



00 Proposed Ground Floor Plan



A Proposed Front Elevation

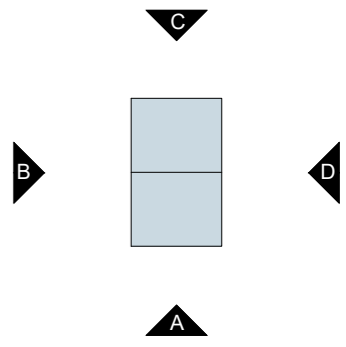


B Proposed Side Elevation



C Proposed Rear Elevation

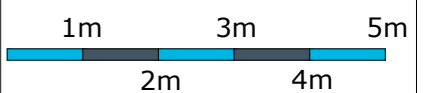
**Key Plan**  
1:500@A2 / 1:1000@A4



**Note**  
FOR MASTER PLAN - GENERAL ARRANGEMENT PLEASE REFER TO DWG NO. WH202.WST.P1.ZZ.DR.PL.10.01  
FOR SITE PLANS PLEASE REFER TO DWG NO. WH202.WST.P1.ZZ.DR.PL.10.02-05 TO 10  
FOR STREET SCENES PLEASE REFER TO DWG NO. WH202.WST.P1.ZZ.DR.PL.30.01 & 02

**Plots:**  
JG 16, 17, 18, 19, 25, 26, 27, 28, 29, 32, 33, 34, 35

**Rev**  
**Rev A - 26.01.23 - PMR**  
Plot numbers amended to suit Council comments  
**Rev B - 24.05.23 - PMR**  
Internals adjusted to comply with Part M



**PLANNING**

**Title**  
HOUSE TYPE 3B  
PLANS & ELEVATIONS [JG]

**Site**  
JACKS GREEN, TAKELEY

Date	Drawn	Checked
AUGUST 2022	PMR	PMR

**Scale**  
1:100@A2 / 1:200@A4

Drawing No.	Rev
WH202.WST.P1.ZZ.DR.PL.55.04	B



**General Notes**  
This drawing is the property of Weston Homes Plc and is issued on the condition that it is not reproduced, disclosed or copied to any unauthorised person without written consent. Levels are in AOD unless otherwise stated. Dimensions are in millimeters unless otherwise stated. Weston Homes Plc must be informed of any drawing errors immediately in writing. This drawing is for planning purposes only.

© WESTON HOMES PLC

<b>Head Office</b> Weston Group Business Centre, Parsonage Road, Takeley, Essex, CM22 6PU. T: 01279 873333	<b>London Office</b> 10 Portman Square, London, W1H 6AZ T: 0203 096 7238
--	--

www.weston-homes.com | email: info@weston-homes.com