



How to take a shingles vesicle swab

1 You will need either:

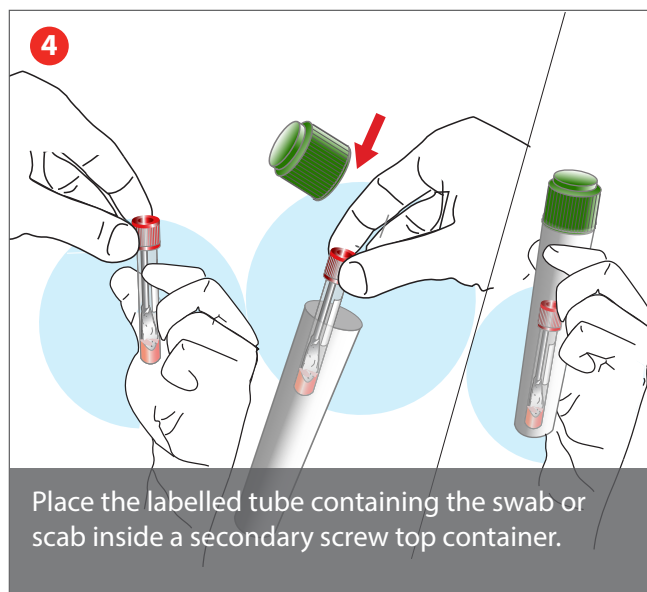
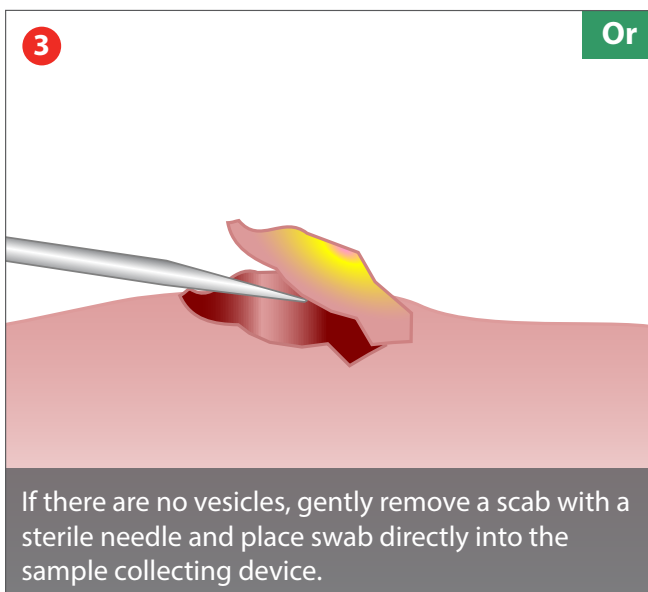
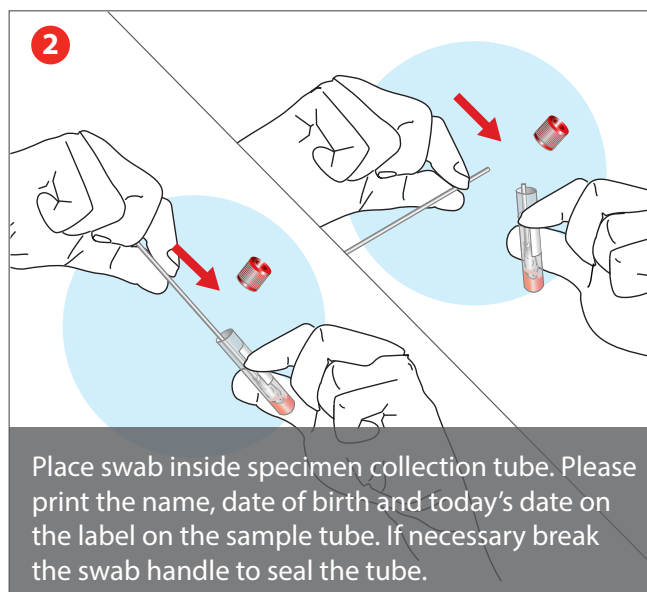
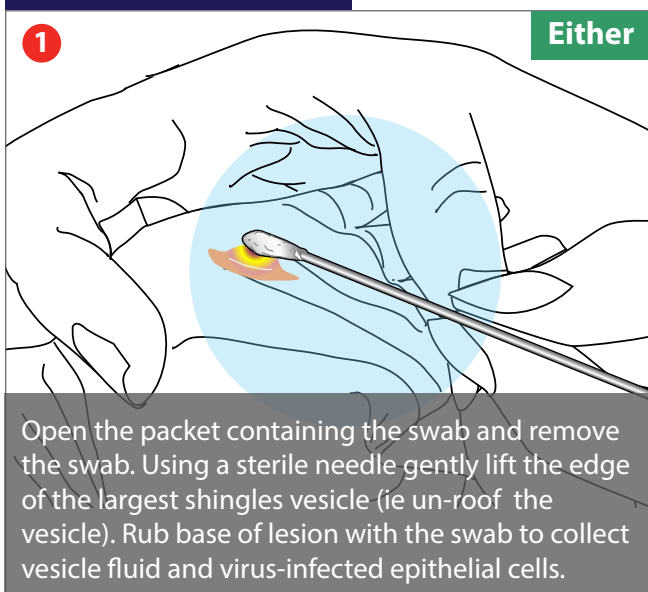
- Viral swab with viral transit medium
- Virocult swab (green top)
- Dry swab

NB – Nose and throat swabs used for collecting flu samples are suitable.
Bacterial, charcoal, or chlamydia swabs are not suitable.

2 A copy of the request form E11. Please download from

www.gov.uk/government/publications/varicella-zoster-virus-referral-form

Taking the sample



3 Please complete all requested information on the E11 form.

4 Package the sample and send completed E11 form with clinical samples to:

Virus Reference Department (VRD)
UKHSA
61 Colindale Avenue
London NW9 5EQ