

# Notice of variation and consolidation with introductory note

**The Environmental Permitting (England & Wales) Regulations 2016**

---

Encyclis (Walsall) Limited  
Walsall Energy Recovery Facility  
Fryers Road  
Walsall  
West Midlands  
WS3 2XJ

**Variation application number**

EPR/AP3832WS/V003

**Permit number**

EPR/AP3832WS

# Walsall Energy Recovery Facility

## Permit number EPR/AP3832WS

### Introductory note

#### **This introductory note does not form a part of the notice**

Under the Environmental Permitting (England & Wales) Regulations 2016 (schedule 5, part 1, paragraph 19) a variation may comprise a consolidated permit reflecting the variations and a notice specifying the variations included in that consolidated permit.

This variation has been issued to update the permit following a statutory review of the permits in the industry sector for incineration. The opportunity has also been taken to consolidate the original permit and subsequent variations. The Industrial Emissions Directive (IED) came into force on 7th January 2014 with the requirement to implement all relevant Best Available Techniques (BAT) conclusions as described in the Commission Implementing Decision. The BAT conclusions for incineration were published on 03 December 2019 in the Official Journal of the European Union (L323) following a European Union wide review of BAT, implementing decision 2017/2117/EU of 21 November 2017.

The schedules specify the changes made to the permit. Schedule 1 of the notice specifies the conditions that have been varied and schedule 2 comprises a consolidated permit which reflects the variations being made. All the conditions of the permit have been varied and are subject to the right of appeal.

#### **Brief description of the process**

This permit controls the operation of a waste incineration plant. The relevant listed activity is 5.1A(1)(b). The permit implements the requirements of the EU Directives on Industrial Emissions and Waste.

The main features of the permit are as follows:

Furnace technology	Moving Grate
Number of lines	2
Principal waste type	Municipal, commercial & industrial
Stack height	102 m
Permitted plant capacity	478,300 tonnes per year
Electrical generation capacity	49 MWe

Up to 478,300 tonnes of non-hazardous waste will be accepted at the site per annum. Waste will be checked upon entry to ensure it can be accepted. Waste will then be transferred to the reception hall waste bunker where it will be stored. Waste is fed into one of two combustion chambers utilising a moving grate which will agitate the fuel bed to promote a good burnout of the waste and a uniform heat release.

Combustion gases from the furnace are extracted and fed into the boiler system where steam is generated. The temperature of the generated steam is increased further (superheated) using heat from the flue gas.

This superheated steam powers a high pressure turbine, generating up to 49MW of electricity. Some heat will be utilised by heat exchangers to preheat the steam condensate. Provision will be made in the design of the steam turbine for the export of heat from the site so that it is Combined Heat and Power Ready (CHP-R). The remaining heat from the steam turbine will be removed from the system through an air cooled vacuum condenser system.

Steam condensate will be collected from various points in the steam cycle, will undergo treatment and is pre-heated prior to reuse as boiler feed water.

The installation incorporates a Water Treatment Plant to reduce the mineral content of mains water prior to use in the steam cycle. The Installation will operate closed loop cooling, with the exception of the flue gas cooling and boiler blowdown cooling, to regulate and minimise water used in the system.

A back-up diesel generator is provided at the installation in order to ensure a safe plant shut down in case of a power failure.

Emissions resulting from the installation will be discharged to atmosphere via two stacks measuring approximately 102m above ground level. The emissions from the stacks will be treated for oxides of nitrogen, acidic gases, particulates, dioxins, furans, dioxin-like PCBs and heavy metals prior to release. The installation will use a combination of primary process control measures and secondary end of pipe abatement plant and equipment to ensure emissions are minimised and meet required limit values. These measures include: selective non-catalytic reduction (SNCR); activated carbon injection; dry lime injection; and fabric bag filters.

Uncontaminated surface water will pass through oil interceptor(s) prior to storage in a tank before being discharged to the canal. Rainwater may be harvested and used for site cleaning activities. Waste water from cleaning will be collected in the waste water tank prior to being tankered off site for treatment.

Emission monitoring will be undertaken using a combination of continuous emissions monitoring systems (CEMS) and periodic extractive stack monitoring. All equipment, sampling and analytical techniques will be accredited under the Environment Agency's Monitoring Certification Scheme (MCERTS) scheme.

The status log of a permit sets out the permitting history, including any changes to the permit reference number.

<b>Status log of the permit</b>		
<b>Description</b>	<b>Date</b>	<b>Comments</b>
Application received EPR/AP3832WS/A001	Duly made 09/10/2015	Application for 27MW electrical output Power Generation Facility.
Additional information received	23/03/2016	Fire Prevention Plan
Permit determined EPR/AP3832WS	22/09/2016	Permit issued to BH EnergyGap (Walsall) Limited
Application EPR/AP3832WS/V002	Duly made 05/12/2019	Application to vary and update the permit to modern conditions.
Additional information received	07/09/2020	Response to schedule 5 notice regarding waste types, sludge acceptance, operating techniques, BAT C review and auxiliary firing fuels.
Variation determined EPR/AP3832WS/V002	04/11/2020	Varied and consolidated permit issued.
Regulation 61 notice issued	18/11/2022	Regulation 61 Notice requiring information for Statutory review of permit. BAT Conclusions published 03 December 2019.

<b>Status log of the permit</b>		
<b>Description</b>	<b>Date</b>	<b>Comments</b>
Regulation 61 notice response	17/02/2023	
Variation issued EPR/AP3832WS/V003	09/05/2023	

End of introductory note

# Notice of variation and consolidation

## The Environmental Permitting (England and Wales) Regulations 2016

The Environment Agency in exercise of its powers under regulation 20 of the Environmental Permitting (England and Wales) Regulations 2016 varies

### Permit number

**EPR/AP3832WS**

### Issued to

**Encyclis (Walsall) Limited** (“the operator”)

whose registered office is

**Floor 4  
Lynton House  
7-12 Tavistock Square  
London  
WC1H 9LT**

company registration number 09119505

to operate a regulated facility at

**Walsall Energy Recovery Facility  
Fryers Road  
Walsall  
West Midlands  
WS3 2XJ**

to the extent set out in the schedules.

The notice shall take effect from 09/05/2023

Name	Date
Principal Permitting Officer	09/05/2023

Authorised on behalf of the Environment Agency

## **Schedule 1**

All conditions have been varied by the consolidated permit as a result of an Environment Agency initiated variation.

## **Schedule 2 – consolidated permit**

Consolidated permit issued as a separate document.

# Permit

## The Environmental Permitting (England and Wales) Regulations 2016

### Permit number

**EPR/AP3832WS**

This is the consolidated permit referred to in the variation and consolidation notice for application EPR/AP3832WS/V003 authorising,

**Encyclis (Walsall) Limited** (“the operator”),

whose registered office is

**Floor 4  
Lynton House  
7-12 Tavistock Square  
London  
WC1H 9LT**

company registration number 09119505

to operate an installation at

**Walsall Energy Recovery Facility  
Fryers Road  
Walsall  
West Midlands  
WS3 2XJ**

to the extent authorised by and subject to the conditions of this permit.

Name	Date
Principal Permitting Officer	09/05/2023

Authorised on behalf of the Environment Agency

# Conditions

## 1 Management

### 1.1 General management

- 1.1.1 The operator shall manage and operate the activities:
- (a) in accordance with a written management system that identifies and minimises risks of pollution, including those arising from operations, maintenance, accidents, incidents, non-conformances, closure and those drawn to the attention of the operator as a result of complaints; and
  - (b) using sufficient competent persons and resources.
  - (c) referenced in schedule 1, table S1.1 (AR1), from 03/12/2023, in accordance with a written other than normal operating conditions (OTNOC) management plan.
- 1.1.2 Records demonstrating compliance with condition 1.1.1 shall be maintained.
- 1.1.3 The operator shall review the written management system at least every 3 years or otherwise as requested by the Environment Agency.
- 1.1.4 Any person having duties that are or may be affected by the matters set out in this permit shall have convenient access to a copy of it kept at or near the place where those duties are carried out.

### 1.2 Energy efficiency

- 1.2.1 The operator shall:
- (a) take appropriate measures to ensure that energy is recovered with a high level of energy efficiency and energy is used efficiently in the activities.
  - (b) review and record at least every four years whether there are suitable opportunities to improve the energy efficiency of the activities; and
  - (c) take any further appropriate measures identified by a review.
- 1.2.2 The operator shall provide and maintain steam and/or hot water pass-outs such that opportunities for the further use of waste heat may be capitalised upon should they become practicable.
- 1.2.3 The operator shall review the viability of Combined Heat and Power (CHP) implementation at least every 4 years, or in response to any of the following factors, whichever comes sooner:
- (a) new plans for significant developments within 15 km of the installation;
  - (b) changes to the Local Plan;
  - (c) changes to the UK CHP Development Map or similar; and
  - (d) new financial or fiscal incentives for CHP.

The results shall be reported to the Agency within 2 months of each review, including where there has been no change to the original assessment in respect of the above factors

### 1.3 Efficient use of raw materials

- 1.3.1 The operator shall:
- (a) take appropriate measures to ensure that raw materials and water are used efficiently in the activities;
  - (b) maintain records of raw materials and water used in the activities;



- (c) review and record at least every four years whether there are suitable alternative materials that could reduce environmental impact or opportunities to improve the efficiency of raw material and water use; and
- (d) take any further appropriate measures identified by a review.

## **1.4 Avoidance, recovery and disposal of wastes produced by the activities**

- 1.4.1 The operator shall take appropriate measures to ensure that:
- (a) the waste hierarchy referred to in Article 4 of the Waste Framework Directive is applied to the generation of waste by the activities; and
  - (b) any waste generated by the activities is treated in accordance with the waste hierarchy referred to in Article 4 of the Waste Framework Directive; and
  - (c) where disposal is necessary, this is undertaken in a manner which minimises its impact on the environment.
- 1.4.2 The operator shall review and record at least every four years whether changes to those measures should be made and take any further appropriate measures identified by a review.

## **2 Operations**

### **2.1 Permitted activities**

- 2.1.1 The operator is only authorised to carry out the activities specified in schedule 1 table S1.1 (the “activities”).
- 2.1.2 Waste authorised by this permit shall be clearly distinguished from any other waste on the site.

### **2.2 The site**

- 2.2.1 The activities shall not extend beyond the site, being the land shown edged in green on the site plan at schedule 7 to this permit.

### **2.3 Operating techniques**

- 2.3.1 The activities shall, subject to the conditions of this permit, be operated using the techniques and in the manner described in the documentation specified in schedule 1, table S1.2, unless otherwise agreed in writing by the Environment Agency.
- 2.3.2 If notified by the Environment Agency that the activities are giving rise to pollution, the operator shall submit to the Environment Agency for approval within the period specified, a revision of any plan specified in schedule 1, table S1.2 or otherwise required under this permit which identifies and minimises the risks of pollution relevant to that plan, and shall implement the approved revised plan in place of the original from the date of approval, unless otherwise agreed in writing by the Environment Agency.
- 2.3.3 Any raw materials or fuels listed in schedule 2 table S2.1 shall conform to the specifications set out in that table.

- 2.3.4 Waste shall only be accepted if:
- (a) it is of a type and quantity listed in schedule 2 table S2.2; and
  - (b) it conforms to the description in the documentation supplied by the producer or holder.
- 2.3.5 Waste paper, metal, plastic or glass that has been separately collected for the purpose of preparing for re-use or recycling shall not be accepted. Waste from the treatment of these separately collected wastes shall only be accepted if incineration delivers the best environmental outcome in accordance with regulation 12 of the Waste (England and Wales) Regulations 2011.
- 2.3.6 Separately collected fractions other than those listed in condition 2.3.5 shall not be accepted unless they are unsuitable for recovery by recycling.
- 2.3.7 The operator shall ensure that where waste produced by the activities is sent to a relevant waste operation, that operation is provided with the following information, prior to the receipt of the waste:
- (a) the nature of the process producing the waste;
  - (b) the composition of the waste;
  - (c) the handling requirements of the waste;
  - (d) the hazardous property associated with the waste, if applicable; and
  - (e) the waste code of the waste.
- 2.3.8 The operator shall ensure that where waste produced by the activities is sent to a landfill site, it meets the waste acceptance criteria for that landfill.
- 2.3.9 Waste shall not be charged if:
- (a) the combustion chamber temperature is below 850 °C,
  - (b) any continuous emission limit value in schedule 3 table S3.1(a) is exceeded during abnormal operation; or
  - (c) any continuous emission limit value in schedule 3 table S3.1 is exceeded, other than during abnormal operation; or
  - (d) continuous emission monitors to demonstrate compliance with any continuous emission limit value in schedule 3 table S3.1 are unavailable other than during abnormal operation; or
  - (e) there is a stoppage, disturbance or failure of the activated carbon abatement system, other than during abnormal operation.
  - (f) continuous emission monitors to demonstrate compliance with the emission limit values for particulates, TOC or CO in schedule 3 are unavailable unless alternative techniques, as agreed in writing with the Environment Agency, are used to demonstrate compliance with those emission limit values.
- 2.3.10 The operator shall record the beginning and end of each period of “abnormal operation”.
- 2.3.11 During a period of “abnormal operation”, the operator shall restore normal operation of the failed equipment or replace the failed equipment as soon as possible.
- 2.3.12 The operator shall interpret the start of the period of “abnormal operation” as the earliest of the following:
- (a) a technically unavoidable stoppage, disturbance, or failure of continuous emission monitors.
  - (b) a technically unavoidable stoppage, disturbance, or failure of the activated carbon abatement system
  - (c) Any other technically unavoidable stoppage, disturbance, or failure of the plant which is causing or could lead to an exceedance of an emission limit value in table S3.1.

2.3.13 The operator shall interpret the end of the period of “abnormal operation” as the earliest of the following:

- (a) when the failed equipment is repaired and brought back into normal operation;
- (b) when the operator initiates a shut down of the waste combustion activity, as described in the application or as agreed in writing with the Environment Agency;
- (c) The failed equipment has not been repaired and brought back into normal operation and a single period of abnormal operation reaches a duration of 4 hours after the start of abnormal operation on an incineration line
- (d) Abnormal operation occurs on an incineration line and the cumulative duration of abnormal operation periods over 1 calendar year has reached 60 hours on that incineration line;

2.3.14 The operator shall have at least one auxiliary burner in each line which shall be operated at start up, shut down and as required during operation to ensure that the operating temperature specified in condition 2.3.9 is maintained as long as incompletely burned waste is present in the combustion chamber. Unless the temperature specified in condition 2.3.9 is maintained in the combustion chamber, such burner(s) shall be fed only with fuels which result in emissions no higher than those arising from the use of gas oil, liquefied gas or natural gas.

2.3.15 Bottom ash and APC residues shall not be mixed.

## **2.4 Improvement programme**

2.4.1 The operator shall complete the improvements specified in schedule 1 table S1.3 by the date specified in that table unless otherwise agreed in writing by the Environment Agency.

2.4.2 Except in the case of an improvement which consists only of a submission to the Environment Agency, the operator shall notify the Environment Agency within 14 days of completion of each improvement.

## **2.5 Pre-operational conditions**

2.5.1 The activities shall not be brought into operation until the measures specified in schedule 1 table S1.4 have been completed.

# **3 Emissions and monitoring**

## **3.1 Emissions to water, air or land**

3.1.1 There shall be no point source emissions to water, air or land except from the sources and emission points listed in schedule 3 tables S3.1 and S3.2.

3.1.2 The limits given in schedule 3, subject to condition 3.2.1, shall not be exceeded.

3.1.3 Wastes produced at the site shall, as a minimum, be sampled and analysed in accordance with schedule 3 table S3.4. Additional samples shall be taken and tested and appropriate action taken, whenever:

- (a) disposal or recovery routes change; or
- (b) it is suspected that the nature or composition of the waste has changed such that the route currently selected may no longer be appropriate.

## 3.2 Emissions limits and monitoring for emission to air for incineration plant

3.2.1 The limits for emissions to air apply as follows:

- (a) The limits in table S3.1 shall not be exceeded except during periods of abnormal operation.
- (b) The limits in table S3.1 (a) shall not be exceeded during abnormal operation.

3.2.2 Where Continuous Emission Monitors are installed to comply with the monitoring requirements in schedule 3 table S3.1 and S3.1(a); the Continuous Emission Monitors shall be used such that;

(a) the values of the 95% confidence intervals of a single measured result at the daily emission limit value shall not exceed the following percentages of the emission limit values:

• Carbon monoxide	10%
• Sulphur dioxide	20%
• Oxides of nitrogen (NO & NO <sub>2</sub> expressed as NO <sub>2</sub> )	20%
• Particulate matter	30%
• Total organic carbon (TOC)	30%
• Hydrogen chloride	40%
• Ammonia	40%

(b) valid half-hourly average values or 10-minute averages shall be determined within the effective operating time (excluding the start-up and shut-down periods) from the measured values after having subtracted the value of the confidence intervals in condition 3.2.2 (a).

(c) where it is necessary to calibrate or maintain the monitor and this means that data are not available for a complete half-hour or 10 minute period, the half-hourly average or 10-minute average shall in any case be considered valid if measurements are available for a minimum of 20 minutes or 7 minutes during the half-hour or 10-minute period respectively. The number of half-hourly or 10-minute averages so validated shall not exceed 5 or 15 respectively per day;

(d) daily average values shall be calculated as follows:

the average of valid half hourly averages or 10 minute averages over a calendar day excluding half hourly averages or 10 minute averages during periods of abnormal operation. The daily average value shall be considered valid if no more than five half-hourly average or fifteen 10-minute average values in any day have been determined not to be valid;

(e) no more than ten daily average values per year shall be determined not to be valid.

## 3.3 Emissions of substances not controlled by emission limits

3.3.1 Emissions of substances not controlled by emission limits (excluding odour) shall not cause pollution. The operator shall not be taken to have breached this condition if appropriate measures, including, but not limited to, those specified in any approved emissions management plan, have been taken to prevent or where that is not practicable, to minimise, those emissions.

3.3.2 The operator shall:

- (a) if notified by the Environment Agency that the activities are giving rise to pollution, submit to the Environment Agency for approval within the period specified, an emissions management plan which identifies and minimises the risks of pollution from emissions of substances not controlled by emission limits;
  - (b) implement the approved emissions management plan, from the date of approval, unless otherwise agreed in writing by the Environment Agency.
- 3.3.3 All liquids in containers, whose emission to water or land could cause pollution, shall be provided with secondary containment, unless the operator has used other appropriate measures to prevent or where that is not practicable, to minimise, leakage and spillage from the primary container.
- 3.3.4 Periodic monitoring shall be carried out at least once every 5 years for groundwater and 10 years for soil, unless such monitoring is based on a systematic appraisal of the risk of contamination.

### **3.4 Odour**

- 3.4.1 Emissions from the activities shall be free from odour at levels likely to cause pollution outside the site, as perceived by an authorised officer of the Environment Agency, unless the operator has used appropriate measures, including, but not limited to, those specified in any approved odour management plan, to prevent or where that is not practicable to minimise the odour.
- 3.4.2 The operator shall:
- (a) if notified by the Environment Agency that the activities are giving rise to pollution outside the site due to odour, submit to the Environment Agency for approval within the period specified, an odour management plan which identifies and minimises the risks of pollution from odour;
  - (b) implement the approved odour management plan, from the date of approval, unless otherwise agreed in writing by the Environment Agency.

### **3.5 Noise and vibration**

- 3.5.1 Emissions from the activities shall be free from noise and vibration at levels likely to cause pollution outside the site, as perceived by an authorised officer of the Environment Agency, unless the operator has used appropriate measures, including, but not limited to, those specified in any approved noise and vibration management plan to prevent or where that is not practicable to minimise the noise and vibration.
- 3.5.2 The operator shall:
- (a) if notified by the Environment Agency that the activities are giving rise to pollution outside the site due to noise and vibration, submit to the Environment Agency for approval within the period specified, a noise and vibration management plan which identifies and minimises the risks of pollution from noise and vibration;
  - (b) implement the approved noise and vibration management plan, from the date of approval, unless otherwise agreed in writing by the Environment Agency.

### **3.6 Monitoring**

- 3.6.1 The operator shall, unless otherwise agreed in writing by the Environment Agency, undertake the monitoring specified in the following tables in schedule 3 to this permit:
- (a) point source emissions specified in tables S3.1, S3.1(a) and S3.2;
  - (b) process monitoring specified in table S3.3;
  - (c) residue quality in table S3.4.

- 3.6.2 The operator shall maintain records of all monitoring required by this permit including records of the taking and analysis of samples, instrument measurements (periodic and continual), calibrations, examinations, tests and surveys and any assessment or evaluation made on the basis of such data.
- 3.6.3 Monitoring equipment, techniques, personnel and organisations employed for the emissions monitoring programme and the environmental or other monitoring specified in condition 3.6.1 shall have either MCERTS certification or MCERTS accreditation (as appropriate) unless otherwise agreed in writing by the Environment Agency. Newly installed CEMs, or CEMs replacing existing CEMs, shall have MCERTS certification and unless otherwise agreed in writing by the Environment Agency have an MCERTS certified range which is not greater than 1.5 times the daily emission limit value (ELV) specified in schedule 3 table S3.1. The CEM shall also be able to measure instantaneous values over the ranges which are to be expected during all operating conditions. If it is necessary to use more than one range setting of the CEM to achieve this requirement, the CEM shall be verified for monitoring supplementary, higher ranges. Newly installed Data handling and acquisition systems (DAHS), or DAHS replacing existing DAHS, shall have MCERTS certification.
- 3.6.4 Permanent means of access shall be provided to enable sampling/monitoring to be carried out in relation to the emission points specified in schedule 3 tables S3.1, S3.1(a) and S3.2 unless otherwise agreed in writing by the Environment Agency.

### **3.7 Pests**

- 3.7.1 The activities shall not give rise to the presence of pests which are likely to cause pollution, hazard or annoyance outside the boundary of the site. The operator shall not be taken to have breached this condition if appropriate measures, including, but not limited to, those specified in any approved pests management plan, have been taken to prevent or where that is not practicable, to minimise the presence of pests on the site.
- 3.7.2 The operator shall:
- (a) if notified by the Environment Agency, submit to the Environment Agency for approval within the period specified, a pests management plan which identifies and minimises risks of pollution from pests;
  - (b) implement the pests management plan, from the date of approval, unless otherwise agreed in writing by the Environment Agency.

### **3.8 Fire prevention**

- 3.8.1 The operator shall take all appropriate measures to prevent fires on site and minimise the risk of pollution from them including, but not limited to, those specified in any approved fire prevention plan.
- 3.8.2 The operator shall:
- (a) if notified by the Environment Agency that the activities are giving rise to a risk of fire, submit to the Environment Agency for approval within the period specified, a fire prevention plan which prevents fires and minimises the risk of pollution from fires;
  - (b) implement the fire prevention plan, from the date of approval, unless otherwise agreed in writing by the Environment Agency.

## 4 Information

### 4.1 Records

4.1.1 All records required to be made by this permit shall:

- (a) be legible;
- (b) be made as soon as reasonably practicable;
- (c) if amended, be amended in such a way that the original and any subsequent amendments remain legible, or are capable of retrieval; and
- (d) be retained, unless otherwise agreed in writing by the Environment Agency, for at least 6 years from the date when the records were made, or in the case of the following records until permit surrender:
  - (i) off-site environmental effects; and
  - (ii) matters which affect the condition of the land and groundwater.

4.1.2 The operator shall keep on site all records, plans and the management system required to be maintained by this permit, unless otherwise agreed in writing by the Environment Agency.

### 4.2 Reporting

4.2.1 The operator shall send all reports and notifications required by the permit to the Environment Agency using the contact details supplied in writing by the Environment Agency.

4.2.2 A report or reports on the performance of the activities over the previous year shall be submitted to the Environment Agency by 31 January (or other date agreed in writing by the Environment Agency) each year using the annual report form specified in schedule 4, table S4.4 or otherwise in a format agreed with the Environment Agency. The report(s) shall include as a minimum:

- (a) a review of the results of the monitoring and assessment carried out in accordance with the permit including an interpretive review of that data;
- (b) the annual production /treatment data set out in schedule 4 table S4.2;
- (c) the performance parameters set out in schedule 4 table S4.3
- (d) the functioning and monitoring of the incineration plant in a format agreed with the Environment Agency. The report shall, as a minimum requirement (as required by Chapter IV of the Industrial Emissions Directive) give an account of the running of the process and the emissions into air and water compared with the emission standards in the IED.

4.2.3 Within 28 days of the end of the reporting period the operator shall, unless otherwise agreed in writing by the Environment Agency, submit reports of the monitoring and assessment carried out in accordance with the conditions of this permit, as follows:

- (a) in respect of the parameters and emission points specified in schedule 4 table S4.1;
- (b) for the reporting periods specified in schedule 4 table S4.1 and using the forms specified in schedule 4 table S4.4; and
- (c) giving the information from such results and assessments as may be required by the forms specified in those tables.

4.2.4 The operator shall, unless notice under this condition has been served within the preceding four years, submit to the Environment Agency, within six months of receipt of a written notice, a report assessing whether there are other appropriate measures that could be taken to prevent, or where that is not practicable, to minimise pollution.

4.2.5 Within 1 month of the end of each quarter, the operator shall submit to the Environment Agency using the form made available for the purpose, the information specified on the form relating to the site and the waste accepted and removed from it during the previous quarter.

## 4.3 Notifications

4.3.1 In the event:

- (a) that the operation of the activities gives rise to an incident or accident which significantly affects or may significantly affect the environment, the operator must immediately:
  - (i) inform the Environment Agency,
  - (ii) take the measures necessary to limit the environmental consequences of such an incident or accident, and
  - (iii) take the measures necessary to prevent further possible incidents or accidents;
- (b) of a breach of any permit condition the operator must immediately:
  - (i) inform the Environment Agency, and
  - (ii) take the measures necessary to ensure that compliance is restored within the shortest possible time;
- (c) of a breach of permit condition which poses an immediate danger to human health or threatens to cause an immediate significant adverse effect on the environment, the operator must immediately suspend the operation of the activities or the relevant part of it until compliance with the permit conditions has been restored.

4.3.2 Any information provided under condition 4.3.1, shall be confirmed by sending the information listed in schedule 5 to this permit within the time period specified in that schedule.

4.3.3 Where the Environment Agency has requested in writing that it shall be notified when the operator is to undertake monitoring and/or spot sampling, the operator shall inform the Environment Agency when the relevant monitoring and/or spot sampling is to take place. The operator shall provide this information to the Environment Agency at least 14 days before the date the monitoring is to be undertaken.

4.3.4 The Environment Agency shall be notified within 14 days of the occurrence of the following matters, except where such disclosure is prohibited by Stock Exchange rules:

Where the operator is a registered company:

- (a) any change in the operator's trading name, registered name or registered office address; and
- (b) any steps taken with a view to the operator going into administration, entering into a company voluntary arrangement or being wound up.

Where the operator is a corporate body other than a registered company:

- (a) any change in the operator's name or address; and
- (b) any steps taken with a view to the dissolution of the operator.

4.3.5 Where the operator proposes to make a change in the nature or functioning, or an extension of the activities, which may have consequences for the environment and the change is not otherwise the subject of an application for approval under the Regulations or this permit:

- (a) the Environment Agency shall be notified at least 14 days before making the change; and
- (b) the notification shall contain a description of the proposed change in operation.

4.3.6 The Environment Agency shall be given at least 14 days notice before implementation of any part of the site closure plan.



## **4.4 Interpretation**

- 4.4.1 In this permit the expressions listed in schedule 6 shall have the meaning given in that schedule.
- 4.4.2 In this permit references to reports and notifications mean written reports and notifications, except where reference is made to notification being made “immediately, in which case it may be provided by telephone.

# Schedule 1 – Operations

<b>Table S1.1 activities</b>			
<b>Activity reference</b>	<b>Activity listed in Schedule 1 of the EP Regulations</b>	<b>Description of specified activity</b>	<b>Limits of specified activity</b>
AR1	S5.1 A1 (b)	The incineration of non-hazardous waste in a waste incineration plant with a capacity of 3 tonnes per hour or more.	From receipt of waste to emission of exhaust gas and removal from site of waste arising.  Waste types and quantities as specified in Table S2.2 of this permit.
<b>Directly Associated Activities</b>			
AR2	Electricity Generation	Generation of ~ 49.9 MWe electrical power using a steam turbine from energy recovered from the flue gases, with the potential to export heat off-site	
AR3	Back up electrical generator	For providing emergency electrical power to the plant in the event of supply interruption.	Emergency use to a maximum of 500 hours operation per year.  Maximum of 50 hours testing per year.

<b>Table S1.2 Operating techniques</b>		
<b>Description</b>	<b>Parts</b>	<b>Date Received</b>
Application EPR/AP3832WS/A001	Sections: 1. Non-Technical Summary 5. Description of Facility – Operational Techniques 6. Raw Materials and Waste 7.6.2 Energy Recovery, Consumption and efficiency	09/10/2015
Variation application EPR/AP3832WS/V002	Supporting information: Appendix A - Drawings Appendix C – Operating Techniques Appendix J – Fire Prevention Plan	04/12/2019
Response to schedule 5 notice dated 10/08/2020	Sections: 1. BAT C review 3. Sludge waste acceptance	07/09/2020
Response to regulation 61 notice	Operating techniques as set out in the response to the regulation 61 notice.	17/02/2023

<b>Table S1.3 Improvement programme requirements</b>		
<b>Reference</b>	<b>Requirement</b>	<b>Date</b>
<b>IC1</b>	The operator shall submit a written report to the Environment Agency on the implementation of its Environmental Management System (EMS) and the progress made in the certification of the system by an external body or if appropriate submit a schedule by which the EMS will be certified.	Within 12 months of the completion of commissioning.
<b>IC2</b>	The operator shall submit a written proposal to the Environment Agency to carry out tests to determine the size distribution of the particulate matter in the exhaust gas emissions to air from emission points A1 and A2, identifying the fractions within the PM <sub>10</sub> , and PM <sub>2.5</sub> ranges. On receipt of written approval from the Environment Agency to the proposal and the timetable, the operator shall carry out the tests and submit to the Environment Agency a report on the results.	Within 6 months of the completion of commissioning.
<b>IC3</b>	The operator shall submit a written report to the Environment Agency on the commissioning of the installation. The report shall summarise the environmental performance of the plant as installed against the design parameters set out in the Application. The report shall also include a review of the performance of the facility against the conditions of this permit and details of procedures developed during commissioning for achieving and demonstrating compliance with permit conditions and confirm that the Environmental Management System (EMS) has been updated accordingly.	Within 4 months of the completion of commissioning.
<b>IC4</b>	The operator shall notify the Environment Agency of the proposed date(s) that validation testing, as approved through PO9, is planned for.	Notification at least 3 weeks prior to validation testing
	During commissioning the operator shall carry out validation testing to validate the residence time, minimum temperature and oxygen content of the gases in the furnace whilst operating under normal load and most unfavourable operating conditions. The validation shall be to the methodology as approved through pre-operational condition PO9.	Validation tests completed before the end of commissioning
<b>IC5</b>	The operator shall submit a written report to the Environment Agency describing the performance and optimisation of: <ul style="list-style-type: none"> <li>• The Selective Non Catalytic Reduction (SNCR) system and combustion settings to minimise oxides of nitrogen (NO<sub>x</sub>). The report shall include an assessment of the level of NO<sub>x</sub>, N<sub>2</sub>O and NH<sub>3</sub> emissions that can be achieved under optimum operating conditions.</li> <li>• The lime injection system for minimisation of acid gas emissions.</li> <li>• The carbon injection system for minimisation of dioxin and heavy metal emissions.</li> </ul>	Within 4 months of the completion of commissioning.

<b>Table S1.3 Improvement programme requirements</b>		
<b>Reference</b>	<b>Requirement</b>	<b>Date</b>
<b>IC6</b>	<p>The operator shall carry out an assessment of the impact of emissions to air of the following component metals subject to emission limit values:</p> <p>Cd, As and Ni.</p> <p>A report on the assessment shall be made to the Environment Agency.</p> <p>Emissions monitoring data obtained during the first year of operation shall be used to compare the actual emissions with those assumed in the impact assessment submitted with the Application. An assessment shall be made of the impact of each metal against the relevant ES. In the event that the assessment shows that an environmental standard can be exceeded, the report shall include proposals for further investigative work.</p>	15 months from the completion of commissioning
<b>IC7</b>	<p>The operator shall submit a written summary report to the Environment Agency to confirm that the performance of Continuous Emission Monitors for parameters as specified in table S3.1 and table S3.1(a) complies with the requirements of BS EN 14181, specifically the requirements of QAL1, QAL2 and QAL3. The report shall include the results of calibration and verification testing,</p>	<p>Initial calibration report to be submitted to the Agency within 3 months of completion of commissioning.</p> <p>Full summary evidence compliance report to be submitted within 18 months of completion of commissioning.</p>
<b>IC8</b>	<p>During commissioning, the operator shall carry out tests to demonstrate whether the furnace combustion air will ensure that negative pressure is achieved throughout the reception hall. The tests shall demonstrate whether air is pulled through the reception hall and bunker area and into the furnace with dead spots minimised. The operator shall submit a report to the Environment Agency, for approval, summarising the findings along with any proposed improvements if required</p>	Within 3 months of completion of commissioning.
<b>IC9</b>	<p>The operator shall carry out a programme of dioxin and dioxin like PCB monitoring over a period and frequency agreed with the Environment Agency. The operator shall submit a report to the Environment Agency with an analysis of whether dioxin emissions can be considered to be stable.</p>	Within 6 months of completion of commissioning or as agreed in writing with the Environment Agency

<b>Table S1.3 Improvement programme requirements</b>		
<b>Reference</b>	<b>Requirement</b>	<b>Date</b>
<b>IC10</b>	The operator shall carry out a programme of mercury monitoring over a period and frequency agreed with the Environment Agency. The operator shall submit a report to the Environment Agency with an analysis of whether the waste feed to the plant can be proven to have a low and stable mercury content.	Within 6 months of completion of commissioning or as agreed in writing with the Environment Agency
<b>IC11</b>	<p>The operator shall perform a study to determine the extent to which the operation of the current systems in place at the plant to minimise NOx emissions can be further optimised such that emissions are reduced as far as possible below 120 mg/Nm<sup>3</sup> as a daily average, without significantly increasing emissions of other pollutants or having a significant negative effect on plant operation, reliability or bottom ash quality. The study shall be based on the results of trials carried out at the installation and shall have regard to the recommendations for test conditions set out in Section 5.4.3 of report titled 'Establishing factors that influence NOx reduction at waste incineration plant to levels below the upper end of the BAT-AELs' (dated 14/01/2022), or other methodology agreed in writing with the Environment Agency. A written report of the study shall be submitted to the Environment Agency which shall include but not necessarily be limited to the following:</p> <ul style="list-style-type: none"> <li>• A brief description of the currently installed measures at the installation to minimise NOx emissions, including details of how the reagent dosing system responds to emissions monitoring data and historic data which illustrates the current achievable level of daily NOx emissions.</li> <li>• The results of trials conducted to further reduce daily average NOx emissions using currently installed measures, including: <ul style="list-style-type: none"> <li>○ a description of the parameters that were varied during the trial e.g. ammonia or urea feed rates, physical form of urea injected, air flows, and the range over which they were varied</li> <li>○ the levels of NOx achieved and associated levels of ammonia and nitrous oxide emissions and reagent consumption</li> <li>○ observed effects and predicted long-term impacts on plant operation, reliability and maintenance regime</li> <li>○ any changes to the composition of the bottom ash and boiler ash and the implications of those changes for the ability to process and use the ash, as well as for the pollution potential of the ash both during processing and its subsequent use as a secondary aggregate</li> <li>○ any other relevant cross-media effects</li> </ul> </li> </ul> <p>The report shall also include a description of the extent to which current systems in place at the plant to minimise NOx emissions can be optimised on a permanent basis, including justification and an implementation plan where relevant.</p>	Within 12 months of the completion of commissioning

<b>Table S1.4 Pre-operational measures</b>	
<b>Reference</b>	<b>Pre-operational measures</b>
<b>PO1</b>	<p>Prior to the commencement of commissioning, the Operator shall send a summary of the site Environment Management System (EMS) to the Environment Agency and obtain the Environment Agency's written approval to the EMS summary.</p> <p>The summary shall include a copy of the full other than normal operating conditions (OTNOC) management plan which shall be prepared in accordance with BAT 18 of the BAT conclusions and include:</p> <ul style="list-style-type: none"> <li>• a list of potential OTNOC situations that are considered to be abnormal operation under the definition in Schedule 6 of this permit.</li> <li>• a definition of start-up and shut-down conditions having regard to any Environment Agency guidance on start-up and shut-down.</li> <li>• any updates on the design of critical equipment to minimise OTNOC since the permit application</li> </ul> <p>The Operator shall make available for inspection all documents and procedures which form part of the EMS. The EMS shall be developed in line with the requirements set out in Environment Agency web guide on developing a management system for environmental permits (found on <a href="http://www.gov.uk">www.gov.uk</a>) and BAT 1 of the incineration BAT conclusions. The EMS shall include the approved OTNOC management plan.</p> <p>The documents and procedures set out in the EMS shall form the written management system referenced in condition 1.1.1 (a) of the permit.</p>
<b>PO2</b>	<p>Prior to the commencement of commissioning, the operator shall send a report to the Environment Agency, and obtain the Environment Agency's written approval of it, which will contain a comprehensive review of the options available for utilising the heat generated, including operating as CHP or supplying district heating, by the waste incineration process in order to ensure that it is recovered as far as practicable. The review shall detail any identified proposals for improving the recovery and utilisation of heat and shall provide a timetable for their implementation.</p>
<b>PO3</b>	<p>Prior to the commencement of commissioning, the operator shall submit to the Environment Agency, and obtain the Environment Agency's written approval of it, a protocol for the sampling and testing of incinerator bottom ash for the purposes of assessing its hazard status. Sampling and testing shall be carried out in accordance with the protocol as approved.</p>
<b>PO4</b>	<p>Prior to the commencement of commissioning, the operator shall submit to the Environment Agency, and obtain the Environment Agency's written approval of it, a written commissioning plan, including timelines for completion, for approval by the Environment Agency. The commissioning plan shall include the expected emissions to the environment during the different stages of commissioning, the expected durations of commissioning activities and the actions to be taken to protect the environment and report to the Environment Agency in the event that actual emissions exceed expected emissions. Commissioning shall be carried out in accordance with the commissioning plan as approved.</p>
<b>PO5</b>	<p>Prior to the commencement of commissioning, the operator shall submit a written report to the Environment Agency, and obtain the Environment Agency's written approval for it, detailing the waste acceptance procedure to be used at the site. The waste acceptance procedure shall include the process and systems by which wastes unsuitable for incineration at the site will be controlled.</p> <p>The procedure shall be implemented in accordance with the written approval from the Agency.</p>

<b>Table S1.4 Pre-operational measures</b>	
<b>Reference</b>	<b>Pre-operational measures</b>
<b>PO6</b>	At least 3 months before the commencement of commissioning, the operator shall submit a written report to the Environment Agency, and obtain the Environment Agency's written approval for it, of the details of the computational fluid dynamic (CFD) modelling. The report shall explain how the furnace has been designed to comply with the residence time and temperature requirements as defined by Chapter IV and Annex VI of the IED whilst operating under normal load and the most unfavourable operating conditions (including minimum turn down and overload conditions), and that the design includes sufficient monitoring ports to support subsequent validation of these requirements during commissioning.
<b>PO7</b>	Prior to the commencement of commissioning, the operator shall submit a report, and obtain the Environment Agency's written approval for it, on the baseline conditions of soil and groundwater at the installation. The report shall contain the information necessary to determine the state of soil and groundwater contamination so as to make a quantified comparison with the state upon definitive cessation of activities provided for in Article 22(3) of the IED. The report shall contain information, supplementary to that already provided in application Site Condition Report, needed to meet the information requirements of Article 22(2) of the IED.
<b>PO8</b>	At least three months before (or other date agreed in writing with the Environment Agency) the commencement of commissioning, the operator shall submit a written report to the Environment Agency, and obtain the Environment Agency's written approval for it, specifying arrangements for continuous and periodic monitoring of emissions to air to comply with Environment Agency guidance notes M1, Monitoring stack emissions – Environmental permits (web guide) and M20. The report shall include the following: <ul style="list-style-type: none"> <li>• Plant and equipment details, including accreditation to MCERTS</li> <li>• Methods and standards for sampling and analysis</li> <li>• Details of monitoring locations, access and working platforms</li> </ul>
<b>PO9</b>	At least 3 months before the commencement of commissioning (or other date agreed in writing with the Environment Agency) the operator shall submit, for approval by the Environment Agency, a methodology (having regard to Technical Report P4-100/TR Part 2 Validation of Combustion Conditions) to verify the residence time, minimum temperature and oxygen content of the gases in the furnace whilst operating under normal load, minimum turn down and overload conditions.
<b>PO10</b>	Prior to the commencement of commissioning, the operator shall send a summary of the site Accident Management Plan to the Environment Agency and make available for inspection all documents and procedures which form part of the plan.
<b>PO11</b>	Prior to the commencement of commissioning, the operator shall provide a written Fire Prevention Plan, including detailed site plans showing the locations of fire prevention and fire-fighting equipment, and details and the location of the fire water storage tank for approval by the Environment Agency. The Fire Prevention Plan shall demonstrate the site is meeting the minimum standards provided in the Environment Agency's 'Fire prevention plans guidance 11 <sup>th</sup> January 2021, or later current guidance as available at the time of submission of the Fire Prevention Plan.
<b>PO12</b>	Prior to the commencement of commissioning, the operator shall provide written details of the final detailed design of the facility to the Environment Agency for approval, including: <ul style="list-style-type: none"> <li>• Site layout drawings;</li> <li>• Details of the site drainage, rainwater harvesting and waste water management including specification and location of the drainage infrastructure, operational and maintenance measures to ensure integrity of the underground structures and tanks and the measures to ensure tanks do not over-fill and a site drainage plan showing the location of all the drainage infrastructure;</li> <li>• Details of the location, specification and operation of the sludge acceptance tank;</li> </ul>

<b>Table S1.4 Pre-operational measures</b>	
<b>Reference</b>	<b>Pre-operational measures</b>
	<ul style="list-style-type: none"> <li>• Details of the design and operation of the de-mineralisation plant;</li> <li>• Details of the online cleaning systems;</li> <li>• Details of the method for conveying boiler ash for mixing with bottom ash;</li> <li>• The thermal input of the back up diesel generator.</li> </ul>



## Schedule 2 – Waste types, raw materials and fuels

Table S2.1 Raw materials and fuels	
Raw materials and fuel description	Specification
Fuel Oil	< 0.1% sulphur content

Table S2.2 Permitted waste types and quantities	
Maximum quantity	478,300 tonnes of waste per annum,
Waste code	Description
<b>02</b>	<b>Wastes from agriculture, horticulture, aquaculture, forestry, hunting and fishing, food preparation and processing</b>
<b>02 01</b>	<b>wastes from agriculture, horticulture, aquaculture, forestry, hunting and fishing</b>
02 01 03	plant-tissue waste
02 01 04	waste plastics (except packaging)
02 01 10	Waste metal
<b>02 02</b>	<b>wastes from the preparation and processing of meat – fish and other foods of animal origin</b>
02 02 03	materials unsuitable for consumption or processing
02 02 04	sludges from on-site effluent treatment
<b>02 06</b>	<b>wastes from the baking and confectionery industry</b>
02 06 01	materials unsuitable for consumption or processing
02 06 03	sludges from on-site effluent treatment
<b>03</b>	<b>Wastes from wood processing and the production of panels and furniture, pulp, paper and cardboard</b>
<b>03 01</b>	<b>wastes from wood processing and the production of panels and furniture</b>
03 01 01	waste bark and cork
03 01 05	sawdust, shavings, cuttings, wood, particle board and veneer other than those mentioned in 03 01 04
<b>03 03</b>	<b>wastes from pulp, paper and cardboard production and processing</b>
03 03 07	mechanically separated rejects from pulping of waste paper and cardboard
03 03 08	wastes from sorting of paper and cardboard destined for recycling
<b>04</b>	<b>Wastes from the leather, fur and textile industries</b>
<b>04 02</b>	<b>wastes from the textile industry</b>
04 02 10	organic matter from natural products (for example grease, wax)
04 02 21	wastes from unprocessed textile fibres
04 02 22	wastes from processed textile fibres
<b>15</b>	<b>Waste packaging, absorbents, wiping cloths, filter materials and protective clothing not otherwise specified</b>
<b>15 01</b>	<b>packaging (including separately collected municipal packaging waste)</b>

<b>Table S2.2 Permitted waste types and quantities</b>	
<b>Maximum quantity</b>	<b>478,300 tonnes of waste per annum,</b>
<b>Waste code</b>	<b>Description</b>
15 01 01	paper and cardboard packaging
15 01 03	wooden packaging
15 01 04	metallic packaging
15 01 05	composite packaging
15 01 06	mixed packaging
15 01 09	textile packaging
<b>17</b>	<b>Construction and demolition wastes (including excavated soil from contaminated sites)</b>
<b>17 02</b>	<b>wood, glass and plastic</b>
17 02 01	wood
<b>18</b>	<b>Wastes from human or animal health care and/or related research (except kitchen and restaurant wastes not arising from immediate health care)</b>
<b>18 01</b>	<b>wastes from natal care, diagnosis, treatment or prevention of disease in humans</b>
18 01 04	wastes whose collection and disposal is not subject to special requirements in order to prevent infection (for example dressings, plaster casts, linen, disposable clothing, diapers)
<b>19</b>	<b>Wastes from waste management facilities, off-site waste water treatment plants and the preparation of water intended for human consumption and water for industrial use</b>
<b>19 02</b>	<b>wastes from physico/chemical treatments of waste (including dechromatation, decyanidation, neutralisation)</b>
19 02 03	premixed wastes composed only of non-hazardous wastes
<b>19 05</b>	<b>wastes from aerobic treatment of solid wastes</b>
19 05 01	non-composted fraction of municipal and similar wastes
19 05 02	non-composted fraction of animal and vegetable waste
19 05 03	off-specification compost
<b>19 06</b>	<b>wastes from anaerobic treatment of waste</b>
19 06 04	digestate from anaerobic treatment of municipal waste
19 06 06	digestate from anaerobic treatment of animal and vegetable waste
<b>19 09</b>	<b>wastes from the preparation of water intended for human consumption or water for industrial use</b>
19 09 02	sludges from water clarification
<b>19 12</b>	<b>wastes from the mechanical treatment of waste (for example sorting, crushing, compacting, pelletising) not otherwise specified</b>
19 12 01	paper and cardboard
19 12 07	wood other than that mentioned in 19 12 06
19 12 08	textiles
19 12 10	combustible waste (refuse derived fuel)

<b>Table S2.2 Permitted waste types and quantities</b>	
<b>Maximum quantity</b>	<b>478,300 tonnes of waste per annum,</b>
<b>Waste code</b>	<b>Description</b>
19 12 12	other wastes (including mixtures of materials) from mechanical treatment of wastes other than those mentioned in 19 12 11
<b>19 13</b>	<b>wastes from soil and groundwater remediation</b>
19 13 04	sludges from soil remediation other than those mentioned in 19 13 03
19 13 06	sludges from groundwater remediation other than those mentioned in 19 13 05
19 13 08	aqueous liquid wastes and aqueous concentrates from groundwater remediation other than those mentioned in 19 13 07
<b>20</b>	<b>Municipal wastes (household waste and similar commercial, industrial and institutional wastes) including separately collected fractions</b>
<b>20 01</b>	<b>separately collected fractions (except 15 01)</b>
20 01 01	paper and cardboard
20 01 10	clothes
20 01 11	textiles
20 01 38	wood other than that mentioned in 20 01 37
20 01 39	plastics
<b>20 02</b>	<b>garden and park wastes (including cemetery waste)</b>
20 02 01	biodegradable waste
<b>20 03</b>	<b>other municipal wastes</b>
20 03 01	mixed municipal waste
20 03 02	waste from markets
20 03 04	septic tank sludge
20 03 06	waste from sewage cleaning

## Schedule 3 – Emissions and monitoring

Table S3.1 Point source emissions to air – emission limits and monitoring requirements.						
Emission point ref. & location	Parameter	Source	Limit (including unit)	Reference period	Monitoring frequency	Monitoring standard(s) or method(s)
A1, A2 (shown on site plan in schedule 7)	Particulate matter	Incineration exhaust gases	30 mg/m <sup>3</sup>	½-hr average	Continuous	EN 14181
	Particulate matter		5 mg/m <sup>3</sup>	daily average	Continuous	EN 14181
	Total Organic Carbon (TOC)		20 mg/m <sup>3</sup>	½-hr average	Continuous	EN 14181
	Total Organic Carbon (TOC)		10 mg/m <sup>3</sup>	daily average	Continuous	EN 14181
	Hydrogen chloride		60 mg/m <sup>3</sup>	½-hr average	Continuous	EN 14181
	Hydrogen chloride		6 mg/m <sup>3</sup>	daily average	Continuous	EN 14181
	Hydrogen fluoride		1 mg/m <sup>3</sup>	daily average	Continuous	EN 14181
	Hydrogen fluoride		1 mg/m <sup>3</sup>	Average of three consecutive measurements of at least 30 minutes each	Quarterly in first year of operation. Then Bi-annually	CEN TS 17340

<b>Table S3.1 Point source emissions to air – emission limits and monitoring requirements.</b>						
<b>Emission point ref. &amp; location</b>	<b>Parameter</b>	<b>Source</b>	<b>Limit (including unit)</b>	<b>Reference period</b>	<b>Monitoring frequency</b>	<b>Monitoring standard(s) or method(s)</b>
A1, A2 (shown on site plan in schedule 7)	Carbon monoxide	Incineration exhaust gases	150 mg/m <sup>3</sup>	95% of all 10-minute averages in any 24-hour period	Continuous	EN 14181
	Carbon monoxide		50 mg/m <sup>3</sup>	daily average	Continuous	EN 14181
	Sulphur dioxide		200 mg/m <sup>3</sup>	½-hr average	Continuous	EN 14181
	Sulphur dioxide		30 mg/m <sup>3</sup>	daily average	Continuous	EN 14181
	Oxides of nitrogen (NO and NO <sub>2</sub> expressed as NO <sub>2</sub> )		400 mg/m <sup>3</sup>	½-hr average	Continuous	EN 14181
	Oxides of nitrogen (NO and NO <sub>2</sub> expressed as NO <sub>2</sub> )		120 mg/m <sup>3</sup>	daily average	Continuous	EN 14181
	Cadmium & thallium and their compounds (total)		0.02 mg/m <sup>3</sup>	Average of three consecutive measurements of at least 30 minutes each	Quarterly in first year. Then Bi-annually	EN 14385

Table S3.1 Point source emissions to air – emission limits and monitoring requirements.						
Emission point ref. & location	Parameter	Source	Limit (including unit)	Reference period	Monitoring frequency	Monitoring standard(s) or method(s)
A1, A2 (shown on site plan in schedule 7)	Mercury and its compounds	Incineration exhaust gases	0.02 mg/m <sup>3</sup>  Limit does not apply if continuous monitoring has been specified by the Environment Agency	Average of three consecutive measurements of at least 30 minutes each	Quarterly in first year and accelerated monitoring at frequency agreed through IC 10. Then Bi-annually.  Not required if continuous monitoring has been specified by the Environment Agency	EN 13211
	Mercury and its compounds		0.02 mg/m <sup>3</sup>  Limit does not apply unless continuous monitoring has been specified by the Environment Agency	Daily average	Continuous Not required unless continuous monitoring has been specified by the Environment Agency after completion of IC10 or if specified by the Environment Agency in line with sampling protocol	EN 14181
	Sb, As, Pb, Cr, Co, Cu, Mn, Ni and V and their compounds (total)		0.3 mg/m <sup>3</sup>	Average of three consecutive measurements of at least 30 minutes each	Quarterly in first year. Then Bi-annually	EN 14385
	Exhaust gas temperature		No limit set	-	Continuous	Traceable to national standards
	Exhaust gas pressure		No limit set	-	Continuous	Traceable to national standards
	Exhaust gas flow		No limit set	-	Continuous	BS EN 16911-2

Table S3.1 Point source emissions to air – emission limits and monitoring requirements.						
Emission point ref. & location	Parameter	Source	Limit (including unit)	Reference period	Monitoring frequency	Monitoring standard(s) or method(s)
A1, A2 (shown on site plan in schedule 7)	Exhaust gas oxygen content	Incineration exhaust gases	No limit set	-	Continuous	EN 14181
	Exhaust gas water vapour content		No limit set	-	Continuous	EN 14181
	Ammonia (NH <sub>3</sub> )		10 mg/m <sup>3</sup>	daily average	Continuous	EN 14181
	Nitrous oxide (N <sub>2</sub> O)		No limit set	½-hr average and / or daily average	Continuous	EN 14181
	Carbon dioxide		No limit set	Continuous	Continuous	EN 14181
	Dioxins / furans (I-TEQ)		0.04 ng/m <sup>3</sup>  and  0.06 ng/m <sup>3</sup> if long term limit is specified by the Environment Agency after completion of IC9 or specified by the Environment Agency in line with sampling protocol	periodic over minimum 6 hours, maximum 8 hour period  and  value over sampling period of 2 to 4 weeks for long term sampling	Monthly for first 6 months and accelerated monitoring as agreed through IC 9, quarterly for following 6 months and then bi-annually;  and  long term monitoring if specified by the Environment Agency after completion of IC9 or specified by the Environment Agency in line with sampling protocol	EN 1948 Parts 1, 2 and 3  and CEN TS 1948-5 if specified by the Environment Agency after completion of IC9 or specified by the Environment Agency in line with sampling protocol

<b>Table S3.1 Point source emissions to air – emission limits and monitoring requirements.</b>						
<b>Emission point ref. &amp; location</b>	<b>Parameter</b>	<b>Source</b>	<b>Limit (including unit)</b>	<b>Reference period</b>	<b>Monitoring frequency</b>	<b>Monitoring standard(s) or method(s)</b>
A1 , A2 (shown on site plan in schedule 7)	Dioxin-like PCBs (WHO-TEQ Humans / Mammals, Fish, Birds)	Incineration exhaust gases	No limit set	periodic over minimum 6 hours, maximum 8 hour period	Quarterly for first year then bi-annually	EN 1948 Parts 1, 2 and 4
	Dioxins / furans (WHO-TEQ Humans / Mammals, Fish, Birds)		No limit set	periodic over minimum 6 hours, maximum 8 hour period	Quarterly in first year. Then Bi-annually	EN 1948 Parts 1, 2 and 3
	Polybrominated dibenzodioxins and furans		No limit set	periodic over minimum 6 hours, maximum 8 hour period	Quarterly in first year. Then Bi-annually	Method based on procedural requirements of EN 1948
	Specific individual polycyclic aromatic hydrocarbons (PAHs), as specified in Schedule 6.		No limit set	periodic over minimum 6 hours, maximum 8 hour period	Quarterly in first year then annually	BS ISO 11338 Parts 1 and 2.
A3 (shown on site plan in schedule 7)	Carbon monoxide	Back-up electrical generator	No limit set	In line with web guide 'Monitoring stack emissions: low risk MCPs and specified generators' Published 16 February 2021 (formerly known as TGN M5)	Every 1500 hours of operation or once every five years (whichever comes first).	In line with web guide 'Monitoring stack emissions: low risk MCPs and specified generators' Published 16 February 2021 (formerly known as TGN M5)



<b>Table S3.1(a) Point source emissions to air during abnormal operation of incineration plant – emission limits and monitoring requirements</b>						
<b>Emission point ref. &amp; location</b>	<b>Parameter</b>	<b>Source</b>	<b>Limit (including unit)</b>	<b>Reference period</b>	<b>Monitoring frequency</b>	<b>Monitoring standard or method</b>
A1, A2 (shown on site plan in schedule 7)	Particulate matter	Incineration exhausts gases	150 mg/m <sup>3</sup>	½-hr average	Continuous	EN 14181  or alternative surrogate as agreed in writing with the environment agency during failure of the continuous emission monitor
	Total Organic Carbon (TOC)		20 mg/m <sup>3</sup>	½-hr average	Continuous	
	Carbon monoxide		150 mg/m <sup>3</sup>	95% of all 10-minute averages in any 24-hour period	Continuous	

<b>Table S3.2 Point Source emissions to water (other than sewer) and land – emission limits and monitoring requirements</b>						
<b>Emission point ref. &amp; location</b>	<b>Source</b>	<b>Parameter</b>	<b>Limit (incl. unit)</b>	<b>Reference Period</b>	<b>Monitoring frequency</b>	<b>Monitoring standard or method</b>
W1 (shown on site plan in schedule 7)	Uncontaminated surface water drainage	No parameters set	No limit set	-	-	-

<b>Table S3.3 Process monitoring requirements</b>				
<b>Emission point reference or source or description of point of measurement</b>	<b>Parameter</b>	<b>Monitoring frequency</b>	<b>Monitoring standard or method</b>	<b>Other specifications</b>
As identified in the Application	Wind Speed and Direction	Continuous	Anemometer	
Location close to the Combustion Chamber inner wall or as identified and justified in Application.	Temperature (° C)	Continuous	Traceable to national standards	As agreed in writing with the Agency.
Incineration plant	Gross electrical efficiency	Within 6 months of first operation and then within 6 months of any modification that significantly affects energy efficiency	Performance test at full load or other method as agreed in writing with the Environment Agency	

<b>Table S3.4 Residue quality</b>					
<b>Emission point reference or source or description of point of measurement</b>	<b>Parameter</b>	<b>Limit</b>	<b>Monitoring frequency</b>	<b>Monitoring standard or method *</b>	<b>Other specifications</b>
Bottom Ash	TOC  or otherwise as agreed in writing with the Environment Agency	3% or otherwise as agreed in writing with the Environment Agency	Monthly in the first year of operation then quarterly	EN 14899 and either EN 13137 or EN 15936  or otherwise as agreed in writing with the Environment Agency	Environment Agency Guidance, 'TGN M4 – Guidelines for Ash Sampling and Analysis'
Bottom Ash	Metals (Antimony, Cadmium, Thallium, Mercury, Lead, Chromium, Copper, Manganese, Nickel, Arsenic, Cobalt, Vanadium, Zinc) and their compounds, dioxins/furans and dioxin-like PCBs.		Monthly in the first year of operation then quarterly	Environment Agency Guidance, 'TGN M4 – Guidelines for Ash Sampling and Analysis'	
Bottom Ash	Total soluble fraction and metals (Antimony, Cadmium, Thallium, Mercury, Lead, Chromium, Copper, Manganese, Nickel, Arsenic, Cobalt, Vanadium, Zinc) soluble fractions		Before use of a new disposal or recycling route	Environment Agency Guidance, 'TGN M4 – Guidelines for Ash Sampling and Analysis'	
APC Residues	Metals (Antimony, Cadmium, Thallium, Mercury, Lead, Chromium, Copper, Manganese, Nickel, Arsenic, Cobalt, Vanadium, Zinc) and their compounds, dioxins/furans and dioxin-like PCBs.		Monthly in the first year of operation then quarterly	Environment Agency Guidance, 'TGN M4 – Guidelines for Ash Sampling and Analysis'	

<b>Table S3.4 Residue quality</b>					
<b>Emission point reference or source or description of point of measurement</b>	<b>Parameter</b>	<b>Limit</b>	<b>Monitoring frequency</b>	<b>Monitoring standard or method *</b>	<b>Other specifications</b>
APC Residues	Total soluble fraction and metals (Antimony, Cadmium, Thallium, Mercury, Lead, Chromium, Copper, Manganese, Nickel, Arsenic, Cobalt, Vanadium, Zinc) soluble fractions		Before use of a new disposal or recycling route	Environment Agency Guidance, 'TGN M4 – Guidelines for Ash Sampling and Analysis'	

\* Or other equivalent standard as agreed in writing with the Environment Agency.

## Schedule 4 – Reporting

Parameters, for which reports shall be made, in accordance with conditions of this permit, are listed below.

<b>Table S4.1 Reporting of monitoring data</b>			
<b>Parameter</b>	<b>Emission or monitoring point/reference</b>	<b>Reporting period</b>	<b>Period begins</b>
Emissions to air Parameters as required by condition 3.6.1.	A1, A2	Quarterly	1 Jan, 1 Apr, 1 Jul and 1 Oct
TOC or otherwise as agreed in writing with the Environment Agency Parameters as required by condition 3.6.1	Bottom Ash	Quarterly (but monthly for the first year of operation)	1 Jan, 1 Apr, 1 Jul and 1 Oct
Metals (Antimony, Cadmium, Thallium, Mercury, Lead, Chromium, Copper, Manganese, Nickel, Arsenic, Cobalt, Vanadium, Zinc) and their compounds, dioxins/furans and dioxin-like PCBs Parameters as required by condition 3.6.1	Bottom Ash	Quarterly (but monthly for the first year of operation)	1 Jan, 1 Apr, 1 Jul and 1 Oct
Total soluble fraction and metals (Antimony, Cadmium, Thallium, Mercury, Lead, Chromium, Copper, Manganese, Nickel, Arsenic, Cobalt, Vanadium, Zinc) soluble fractions Parameters as required by condition 3.6.1	Bottom Ash	Before use of a new disposal or recycling route	
Metals (Antimony, Cadmium, Thallium, Mercury, Lead, Chromium, Copper, Manganese, Nickel, Arsenic, Cobalt, Vanadium, Zinc) and their compounds, dioxins/furans and dioxin-like PCBs Parameters as required by condition 3.6.1	APC Residues	Quarterly (but monthly for the first year of operation)	1 Jan, 1 Apr, 1 Jul and 1 Oct
Total soluble fraction and metals (Antimony, Cadmium, Thallium, Mercury, Lead, Chromium, Copper, Manganese, Nickel, Arsenic, Cobalt, Vanadium, Zinc) soluble fractions Parameters as required by condition 3.6.1	APC Residues	Before use of a new disposal or recycling route	

<b>Table S4.2: Annual production/treatment</b>	
<b>Parameter</b>	<b>Units</b>
Total waste Incinerated	tonnes
Electrical energy produced	MWh
Thermal energy produced e.g. steam for export	MWh
Electrical energy exported	MWh
Electrical energy used on installation	MWh
Waste heat utilised by the installation	MWh

<b>Table S4.3 Performance parameters</b>		
<b>Parameter</b>	<b>Frequency of assessment</b>	<b>Units</b>
Annual Report as required by condition 4.2.2	Annually	-
Electrical energy exported, imported and used at the installation	Annually	kWh / tonne of waste incinerated
Fuel oil consumption	Annually	kg / tonne of waste incinerated
Bottom Ash residue	Annually	Route, tonnes and tonnes / tonne of waste incinerated
APC residue	Annually	Route, tonnes and tonnes / tonne of waste incinerated
Ammonia consumption	Annually	kg / tonne of waste incinerated
Activated Carbon consumption	Annually	kg / tonne of waste incinerated
Lime consumption	Annually	kg / tonne of waste incinerated
Water consumption	Annually	kg / tonne of waste incinerated
Periods of abnormal operation	Annually	No of occasions and cumulative hours for current calendar year for each line.

<b>Table S4.4 Reporting forms</b>		
<b>Media/parameter</b>	<b>Reporting format</b>	<b>Date of form</b>
Annual report required by condition 4.2.2	Annual performance report template	-
Emissions to air until 02/12/2023	Forms air 1-8 or other forms as agreed in writing by the Environment Agency	04/11/2020
Emissions to air from 03/12/2023	Forms air 1-9 or other forms as agreed in writing by the Environment Agency	09/05/2023
Residue quality	Form residue 1 and 2 or other form as agreed in writing by the Environment Agency	09/05/2023

## Schedule 5 – Notification

These pages outline the information that the operator must provide.

Units of measurement used in information supplied under Part A and B requirements shall be appropriate to the circumstances of the emission. Where appropriate, a comparison should be made of actual emissions and authorised emission limits.

If any information is considered commercially confidential, it should be separated from non-confidential information, supplied on a separate sheet and accompanied by an application for commercial confidentiality under the provisions of the EP Regulations.

### Part A

Permit Number	
Name of operator	
Location of Facility	
Time and date of the detection	

<b>(a) Notification requirements for any malfunction, breakdown or failure of equipment or techniques, accident, or emission of a substance not controlled by an emission limit which has caused, is causing or may cause significant pollution</b>	
<b>To be notified within 24 hours of detection</b>	
Date and time of the event	
Reference or description of the location of the event	
Description of where any release into the environment took place	
Substances(s) potentially released	
Best estimate of the quantity or rate of release of substances	
Measures taken, or intended to be taken, to stop any emission	
Description of the failure or accident.	

<b>(b) Notification requirements for the breach of a limit</b>	
<b>To be notified within 24 hours of detection unless otherwise specified below</b>	
Emission point reference/ source	
Parameter(s)	
Limit	
Measured value and uncertainty	
Date and time of monitoring	

<b>(b) Notification requirements for the breach of a limit</b>	
<b>To be notified within 24 hours of detection unless otherwise specified below</b>	
Measures taken, or intended to be taken, to stop the emission	

<b>Time periods for notification following detection of a breach of a limit</b>	
<b>Parameter</b>	<b>Notification period</b>

<b>(c) Notification requirements for the breach of permit conditions not related to limits</b>	
To be notified within 24 hours of detection	
Condition breached	
Date, time and duration of breach	
Details of the permit breach i.e. what happened including impacts observed.	
Measures taken, or intended to be taken, to restore permit compliance.	

<b>(d) Notification requirements for the detection of any significant adverse environmental effect</b>	
<b>To be notified within 24 hours of detection</b>	
Description of where the effect on the environment was detected	
Substances(s) detected	
Concentrations of substances detected	
Date of monitoring/sampling	

**Part B – to be submitted as soon as practicable**

Any more accurate information on the matters for notification under Part A.	
---	--



Measures taken, or intended to be taken, to prevent a recurrence of the incident	
Measures taken, or intended to be taken, to rectify, limit or prevent any pollution of the environment which has been or may be caused by the emission	
The dates of any unauthorised emissions from the facility in the preceding 24 months.	

Name*	
Post	
Signature	
Date	

\* authorised to sign on behalf of the operator

## Schedule 6 – Interpretation

“abatement equipment” means that equipment dedicated to the removal of polluting substances from releases from the installation to air or water media.

“abnormal operation” means: any technically unavoidable stoppages, disturbances, or failures of the plant or the measurement devices. Abnormal operation starts as defined in condition 2.3.12 and ends as defined in condition 2.3.13. Abnormal operation is limited to 4 hours for a single occurrence and a total of 60 hours per year per line.

“accident” means an accident that may result in pollution.

“APC residues” means air pollution control residues

“application” means the application for this permit, together with any additional information supplied by the operator as part of the application and any response to a notice served under Schedule 5 to the EP Regulations.

“authorised officer” means any person authorised by the Environment Agency under section 108(1) of The Environment Act 1995 to exercise, in accordance with the terms of any such authorisation, any power specified in section 108(4) of that Act.

“BAT conclusions” means Commission Implementing Decision (EU) 2019/2010 of 12 November 2019 establishing the best available techniques (BAT) conclusions, under Directive 2010/75/EU of the European Parliament and of the Council, for Waste Incineration

“bottom ash” means ash falling through the grate or transported by the grate;

“CEM” Continuous emission monitor

“CEN” means Comité Européen de Normalisation

“bi-annually” means twice per year with at least five months between tests;

“Commissioning” means testing of the new incineration plant that involves any operation of the furnace or as agreed with the Environment Agency.

Daily average emissions value means ‘the average of at least 43 valid half hourly averages or for CO the average of at least 43 valid half hourly averages or 129 valid 10 min averages’

“dioxin and furans” means polychlorinated dibenzo-p-dioxins and polychlorinated dibenzofurans.

“disposal”. Means any of the operations provided for in Annex I to Directive 2008/98/EC of the European Parliament and of the Council on waste.

“emissions to land” includes emissions to groundwater.

“EP Regulations” means The Environmental Permitting (England and Wales) Regulations SI 2016 No.1154 and words and expressions used in this permit which are also used in the Regulations have the same meanings as in those Regulations.

“emissions of substances not controlled by emission limits” means emissions of substances to air, water or land from the activities, either from the emission points specified in schedule 3 or from other localised or diffuse sources, which are not controlled by an emission limit.

“groundwater” means all water, which is below the surface of the ground in the saturation zone and in direct contact with the ground or subsoil.

“Hazardous property” has the meaning in Annex III of the Waste Framework Directive

“incineration line” means all of the incineration equipment related to a common discharge to air location.

“Industrial Emissions Directive” means DIRECTIVE 2010/75/EU OF THE EUROPEAN PARLIAMENT AND OF THE COUNCIL of 24 November 2010 on industrial emissions

“ISO” means International Standards Organisation.

'List of Wastes' means the list of wastes established by Commission Decision 2000/532/EC replacing Decision 94/3/EC establishing a list of wastes pursuant to Article 1(a) of Council Directive 75/442/EEC on waste and Council Decision 94/904/EC establishing a list of hazardous waste pursuant to Article 1(4) of Council Directive 91/689/EEC on hazardous waste, as amended from time to time

"LOI" means loss on ignition a technique used to determine the combustible material by heating the ash residue to a high temperature

"MCERTS" means the Environment Agency's Monitoring Certification Scheme.

"PAH" means Poly-cyclic aromatic hydrocarbon, and comprises Anthanthrene, Benzo[a]anthracene, Benzo[b]fluoranthene, Benzo[k]fluoranthene, Benzo[b]naph(2,1-d)thiophene, Benzo[c]phenanthrene, Benzo[ghi]perylene, Benzo[a]pyrene, Cholanthrene, Chrysene, Cyclopenta[c,d]pyrene, Dibenzo[ah]anthracene, Dibenzo[a,i]pyrene Fluoranthene, Indo[1,2,3-cd]pyrene, Naphthalene

"PCB" means Polychlorinated Biphenyl. Dioxin-like PCBs are the non-ortho and mono-ortho PCBs listed in the table below.

"Pests" means Birds, Vermin and Insects.

"quarter" means a calendar year quarter commencing on 1 January, 1 April, 1 July or 1 October.

"recovery" means any of the operations provided for in Annex II to Directive 2008/98/EC of the European Parliament and of the Council on waste.

"start up" is any period, where the plant has been non-operational, until waste has been fed to the plant in a sufficient quantity to initiate steady-state conditions as described in the application or as agreed in writing with the Environment Agency.

"shut down" is any period where the plant is being returned to a non-operational state as described in the application or as agreed in writing with the Environment Agency.

"TOC" means Total Organic Carbon. In respect of releases to air, this means the gaseous and vaporous organic substances, expressed as TOC. In respect of Bottom Ash, this means the total carbon content of all organic species present in the ash (excluding carbon in elemental form).

"Waste code" means the six digit code referable to a type of waste in accordance with the List of Wastes and in relation to hazardous waste, includes the asterisk

"Waste Framework Directive" or "WFD" means Waste Framework Directive 2008/98/EC of the European Parliament and of the Council on waste

Where a minimum limit is set for any emission parameter, for example pH, reference to exceeding the limit shall mean that the parameter shall not be less than that limit.

Unless otherwise stated, any references in this permit to concentrations of substances in emissions into air means:

- (a) in relation to emissions from combustion processes, the concentration in dry air at a temperature of 273K, at a pressure of 101.3 kPa and with an oxygen content of 3% dry for liquid and gaseous fuels, 6% dry for solid fuels; and/or
- (b) in relation to gases from incineration plants other than those burning waste oil, the concentration in dry air at a temperature of 273K, at a pressure of 101.3 kPa and with an oxygen content of 11% dry.

For dioxins/furans and dioxin-like PCBs the determination of the toxic equivalence concentration (I-TEQ, & WHO-TEQ for dioxins/furans, WHO-TEQ for dioxin-like PCBs) stated as a release limit and/ or reporting requirement, the mass concentrations of the following congeners have to be multiplied with their respective toxic equivalence factors before summing. When reporting on measurements of dioxins/furans and dioxin-like PCBs, the toxic equivalence concentrations should be reported as a range based on: all congeners less than the detection limit assumed to be zero as a minimum, and all congeners less than the detection limit assumed to be at the detection limit as a maximum. However the minimum value should be used when assessing compliance with the emission limit value in table S3.1.

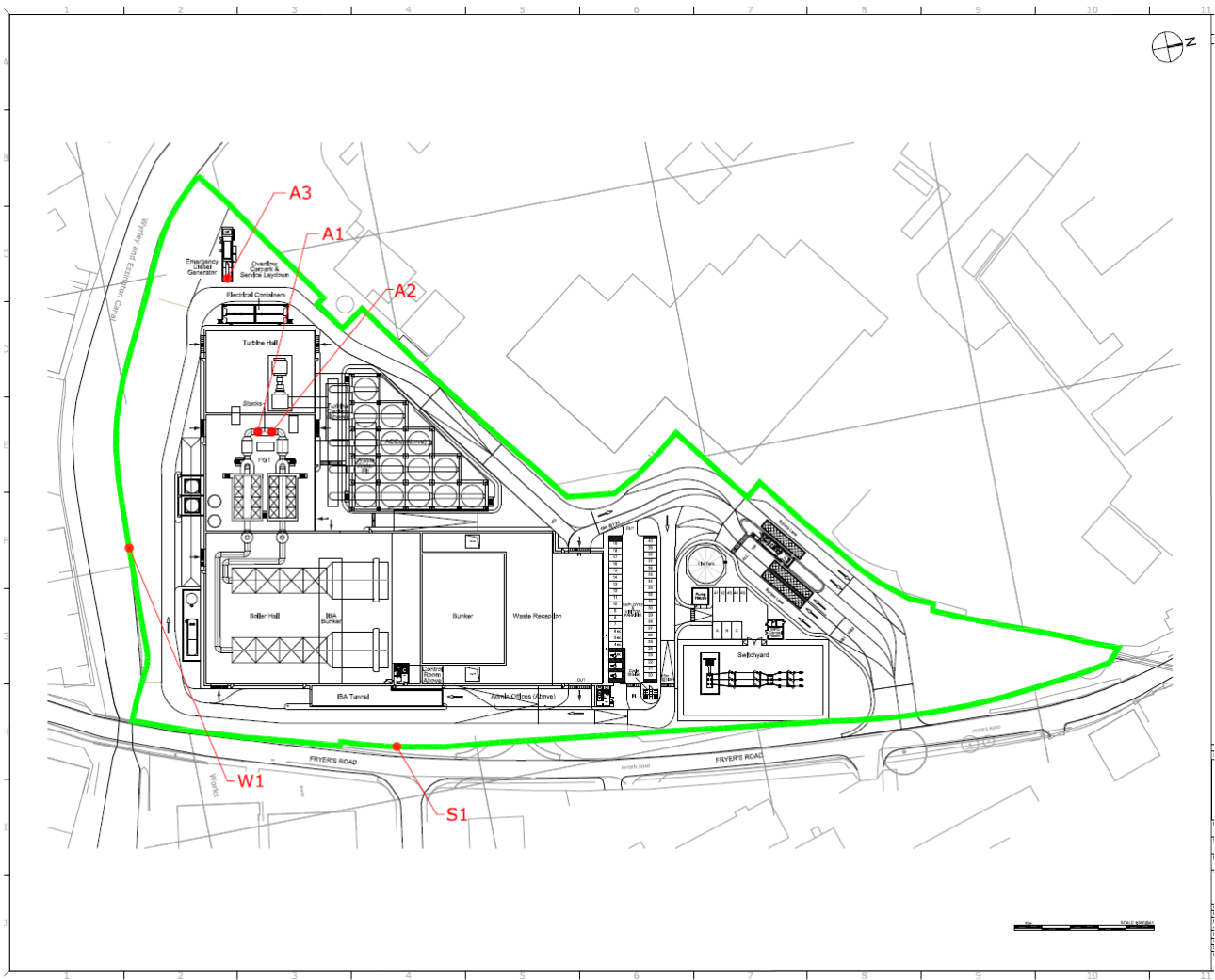
TEF schemes for dioxins and furans				
Congener	I-TEF	WHO-TEF		
	1990	2005	1997/8	
		Humans / Mammals	Fish	Birds
<b>Dioxins</b>				
2,3,7,8-TCDD	1	1	1	1
1,2,3,7,8-PeCDD	0.5	1	1	1
1,2,3,4,7,8-HxCDD	0.1	0.1	0.5	0.05
1,2,3,6,7,8-HxCDD	0.1	0.1	0.01	0.01
1,2,3,7,8,9-HxCDD	0.1	0.1	0.01	0.1
1,2,3,4,6,7,8-HpCDD	0.01	0.01	0.001	<0.001
OCDD	0.001	0.0003	-	-
<b>Furans</b>				
2,3,7,8-TCDF	0.1	0.1	0.05	1
1,2,3,7,8-PeCDF	0.05	0.03	0.05	0.1
2,3,4,7,8-PeCDF	0.5	0.3	0.5	1
1,2,3,4,7,8-HxCDF	0.1	0.1	0.1	0.1
1,2,3,7,8,9-HxCDF	0.1	0.1	0.1	0.1
1,2,3,6,7,8-HxCDF	0.1	0.1	0.1	0.1
2,3,4,6,7,8-HxCDF	0.1	0.1	0.1	0.1
1,2,3,4,6,7,8_HpCDF	0.01	0.01	0.01	0.01
1,2,3,4,7,8,9-HpCDF	0.01	0.01	0.01	0.01
OCDF	0.001	0.0003	0.0001	0.0001

TEF schemes for dioxin-like PCBs			
Congener	WHO-TEF		
	2005	1997/8	
	Humans / mammals	Fish	Birds
<b>Non-ortho PCBs</b>			
3,4,4',5-TCB (81)	0.0001	0.0005	0.1
3,3',4,4'-TCB (77)	0.0003	0.0001	0.05
3,3',4,4',5 - PeCB (126)	0.1	0.005	0.1
3,3',4,4',5,5'-HxCB(169)	0.03	0.00005	0.001
<b>Mono-ortho PCBs</b>			
2,3,3',4,4'-PeCB (105)	0.00003	<0.000005	0.0001
2,3,4,4',5-PeCB (114)	0.00003	<0.000005	0.0001

<b>TEF schemes for dioxin-like PCBs</b>			
<b>Congener</b>	<b>WHO-TEF</b>		
	<b>2005</b>	<b>1997/8</b>	
	<b>Humans / mammals</b>	<b>Fish</b>	<b>Birds</b>
2,3',4,4',5-PeCB (118)	0.00003	<0.000005	0.00001
2',3,4,4',5-PeCB (123)	0.00003	<0.000005	0.00001
2,3,3',4,4',5-HxCB (156)	0.00003	<0.000005	0.0001
2,3,3',4,4',5'-HxCB (157)	0.00003	<0.000005	0.0001
2,3',4,4',5,5'-HxCB (167)	0.00003	<0.000005	0.00001
2,3,3',4,4',5,5'-HpCB (189)	0.00003	<0.000005	0.00001

“year” means calendar year ending 31 December.

# Schedule 7 – Site plan



END OF PERMIT