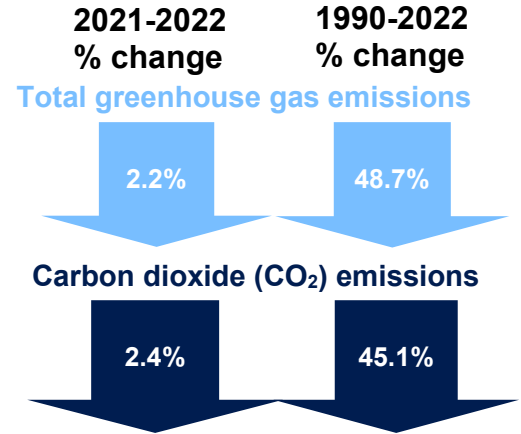
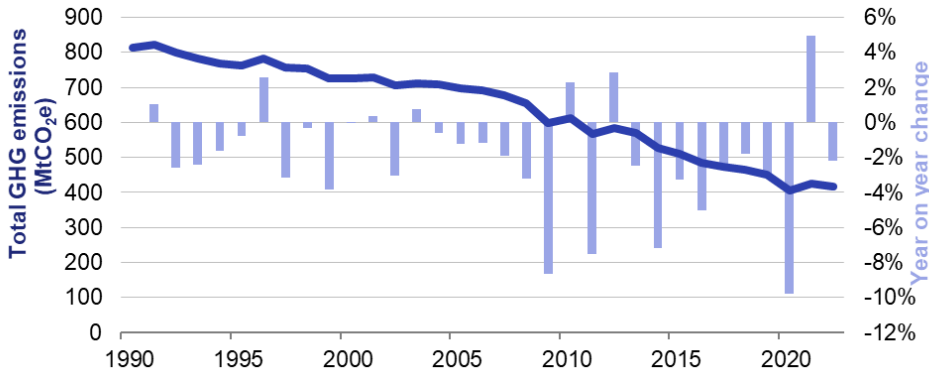
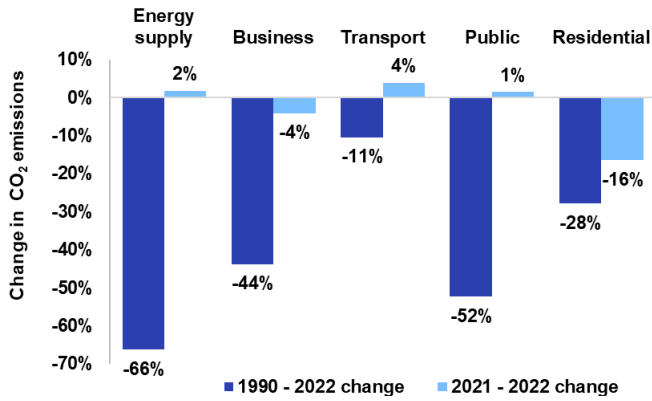


In 2022, total UK territorial greenhouse gas emissions were 417.1 million tonnes carbon dioxide equivalent (MtCO₂e), 2.2% lower than 2021, following warmer weather in 2022 and despite the recovery from the COVID-19 pandemic.



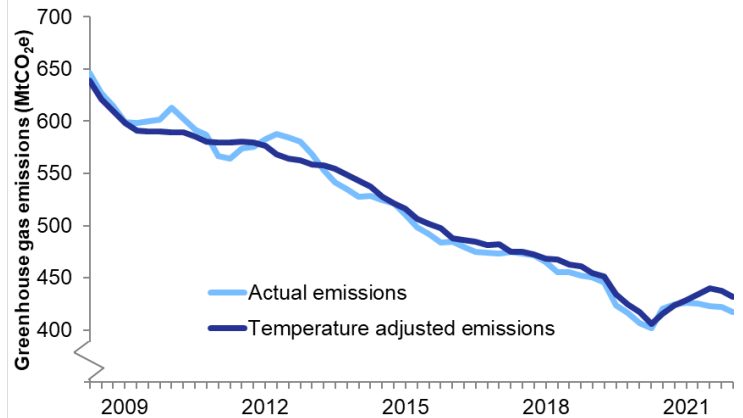
The fall in CO₂ emissions was driven by a large drop in emissions from the residential sector



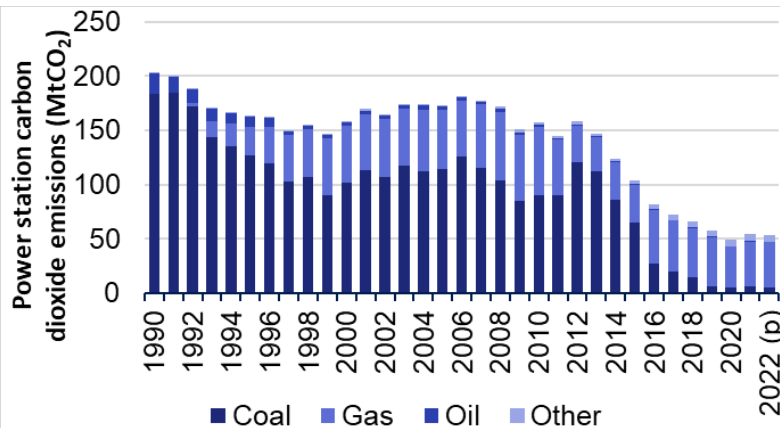
For the sectors not included here, provisional CO₂ estimates for 2022 cannot be made as they cannot be derived from the energy statistics. Final 2022 estimates for all sectors will be published in February 2024, which will include total emissions by sector.

When adjusted for temperatures, greenhouse gas emissions in 2022 were 0.7% higher than in 2021, although still 5.0% lower than they were in 2019

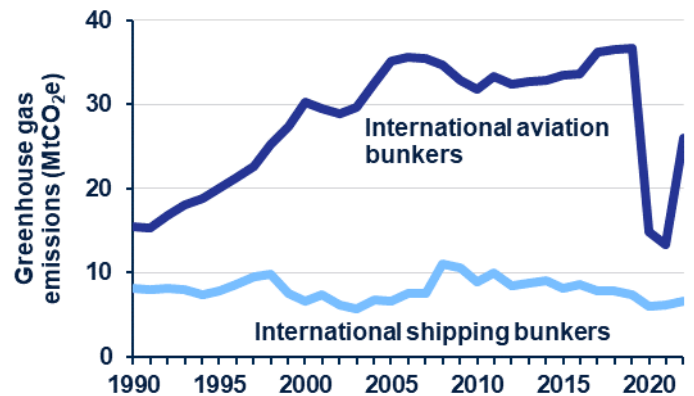
Temperature adjusted emissions estimates remove the estimated effect of external temperatures. Emissions are calculated for each quarter, with the preceding four quarters summed to create a rolling annual total.



The largest driver of the long term fall in UK emissions has been the decrease of emissions from power stations, due to the shift in fuel use within power stations away from using coal for electricity generation towards gas and renewables



In 2022, emissions from UK-based international aviation bunkers were nearly double the 2021 figure, but still 29% lower than in 2019



These international fuel bunker emissions are not included in the UK emission totals shown elsewhere that only include domestic transport.