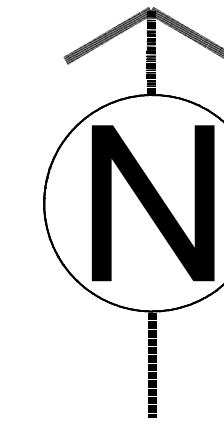


Public footpaths Little Canfield 14, 15 and 16 to be retained and no changes to their routes proposed as part of this scheme



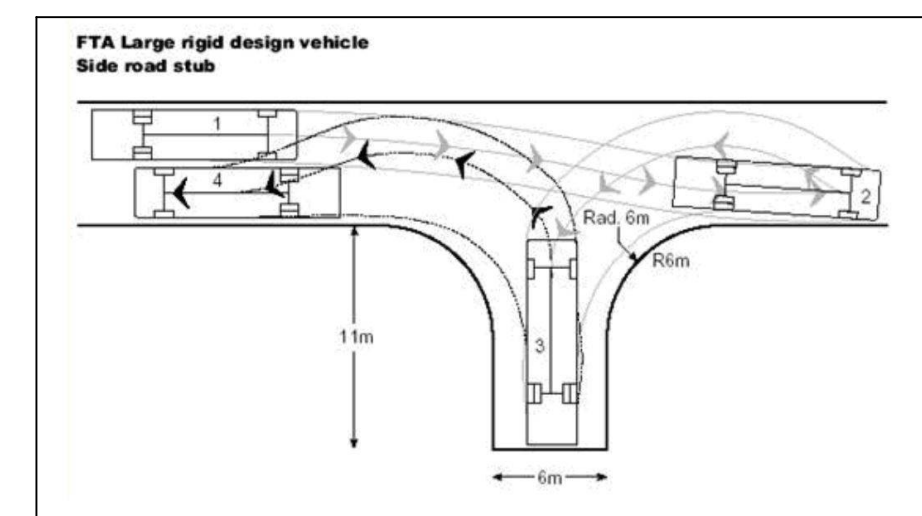
Communal use of existing wood

Communal tennis court

All vehicle access roads that the refuse collection vehicles will be required to use must be constructed to withstand a gross vehicle weight of 32 tonnes and axle loading of 11.5 tonnes.

Manhole covers, gratings, cattle grids etc. situated in the road must also be capable of withstanding these loads.

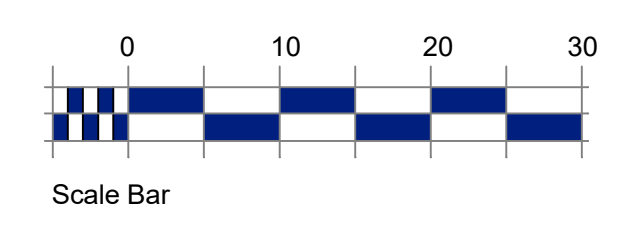
The road and pavement from the bin collection point to the refuse collector vehicle must be at maximum 10 metres and a hard standing surface. It must have a level gradient and a smooth surface; use dropped kerbs where appropriate.



REFUSE LORRY TURNING HEAD

- UNIT 1**  
2 FLOORS @ 70.5 sq m = 141 sq m / 1517 sq ft
- UNIT 2**  
2 FLOORS @ 70.5 sq m = 141 sq m / 1517 sq ft
- UNIT 3**  
2 FLOORS @ 38 sq m = 76 sq m / 820 sq ft
- UNIT 4**  
2 FLOORS @ 38 sq m = 76 sq m / 820 sq ft
- UNIT 5**  
2 FLOORS @ 38 sq m = 76 sq m / 820 sq ft
- UNIT 6**  
2 FLOORS @ 38 sq m = 76 sq m / 820 sq ft
- UNIT 7**  
1 FLOOR @ 124 sq m = 124 sq m / 1,334 sq ft
- UNIT 8 - Existing**  
2 FLOORS - 82 / 58 sq m = 140sq m / 882 sq ft
- UNIT 9 - Existing**  
2 FLOORS AND BASEMENT = 700 sq m / 7534 sq ft
- UNIT 10**  
2 FLOORS @ 100 sq m = 200 sq m / 2150 sq ft
- UNIT 11**  
2 FLOORS @ 80 sq m = 160 sq m / 1722 sq ft
- UNIT 12**  
2 FLOORS @ 107.5 sq m = 215 sq m / 2314 sq ft
- UNIT 13**  
2 FLOORS @ 70 sq m = 140 sq m / 1500 sq ft
- UNIT 14**  
2 FLOORS @ 70 sq m = 140 sq m / 1500 sq ft
- UNIT 15**  
2 FLOORS @ 107.5 sq m = 215 sq m / 2314 sq ft
- UNIT 16**  
2 FLOORS @ 80 sq m = 160 sq m / 1722 sq ft
- UNIT 17**  
2 FLOORS @ 100 sq m = 200 sq m / 2150 sq ft

**TOTAL FLOOR AREA TO BE BUILT**  
2140 sq m / 23,034 sq ft  
Includes Unit 7 as a full conversion required.  
Garages @ 6.5 x 6.5m = 43 sq m / 463 sq ft



Rev A - Jan 23 - Unit 3-6 Floor area increased, refuse lorry turning head added to plan  
Revision: / Date / By

**ANTHONY JANE**  
ARCHITECTURE & INTERIORS  
1A Eves Corner, Danbury, ESSEX, CM3 4QF  
E: technical@anthonyjane.com

Project	CANFIELD MOAT HIGH CROSS LANE WEST LITTLE CANFIELD CM6 1TD		
Client	Mr ANDREW SMITH		
Drawing	PROPOSED SITE PLAN		
Drawing	Drawing Use	Date	Rev
	Information	MAR 22	A
Drawing number	10949/A1/06		Scale 1:500 @ A1