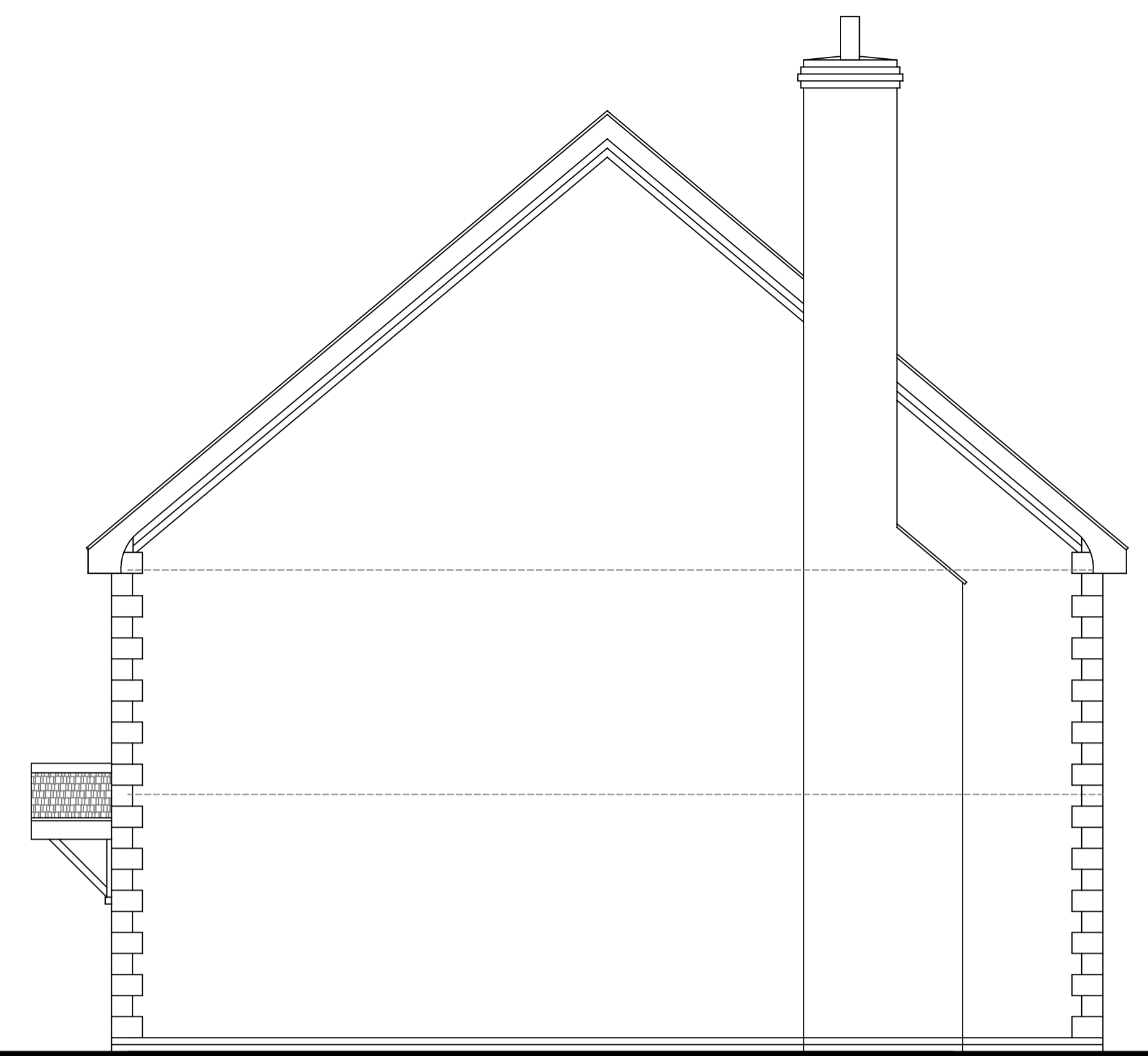


- Corbel top to facing brick chimney
- Slate roof with slate ridge tile
- White timber fascia and soffit.
- Curved facing brick soldier course over windows
- Timber painted box sash windows
- Reconstituted stone cill sections
- Block bonding to external corners
- Alluminium rainwater goods using Ogee gutter sections powder coated finish.

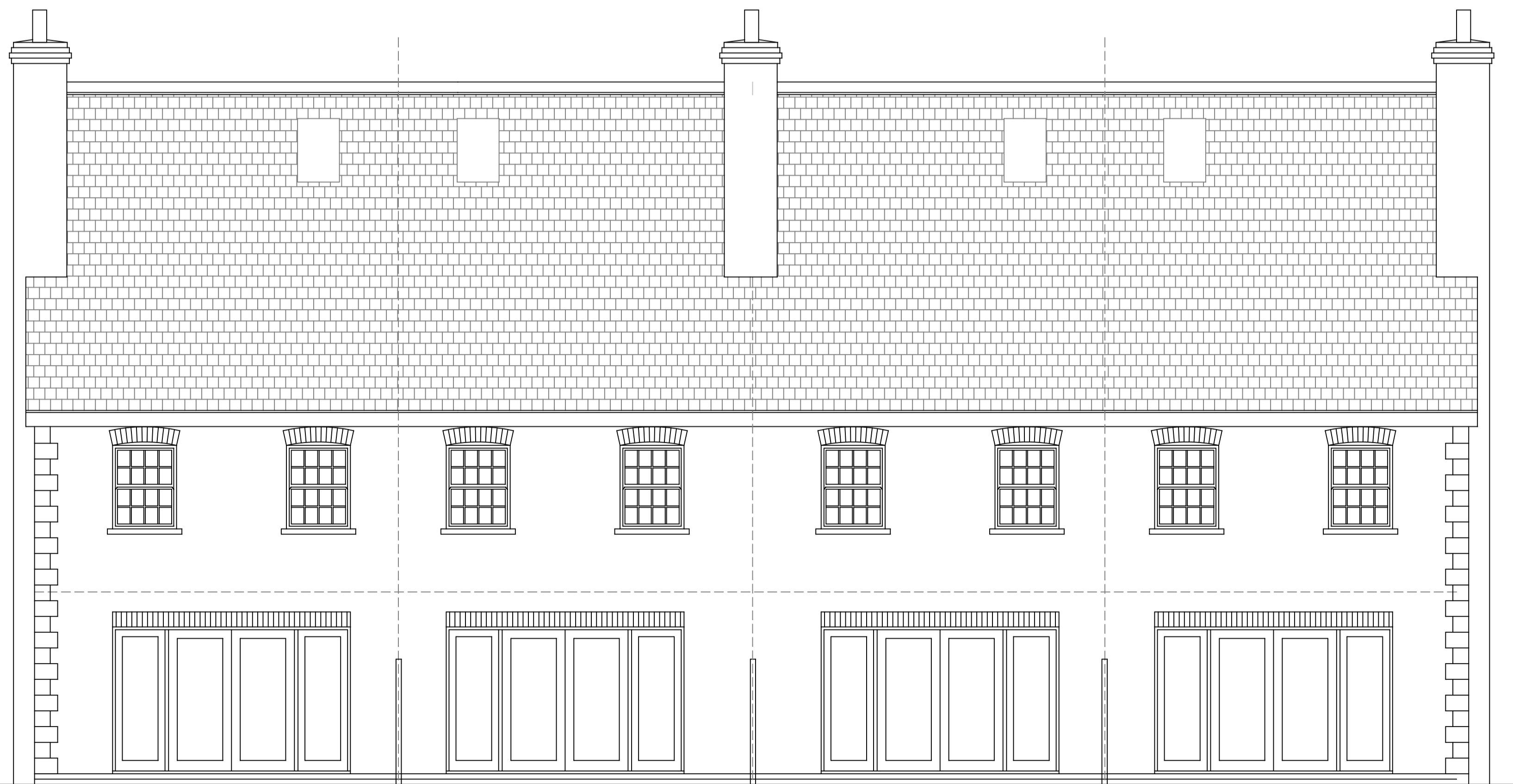


FRONT ELEVATION



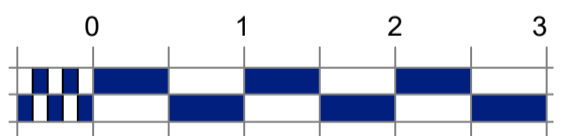
SIDE ELEVATION ( other end handed )

- Corbel top to facing brick chimney
- Slate roof with slate ridge tile
- White timber fascia and soffit.
- Curved facing brick soldier course over windows
- Timber painted box sash windows
- Reconstituted stone cill sections
- Block bonding to external corners
- Alluminium rainwater goods using Ogee gutter sections powder coated finish.



REAR ELEVATION

Rev A : 01/23 - Floor area changed to 95m2  
 Revision / Date / By  
 Description



Scale Bar

**ANTHONY JANE**  
 ARCHITECTURE & INTERIORS

1A Eves Corner, Danbury, ESSEX, CM3 4QF  
 E : technical@anthonyjane.com

Project

CANFIELD MOAT  
 HIGH CROSS LANE WEST  
 LITTLE CANFIELD  
 CM6 1TD

Client

Mr ANDREW SMITH

Drawing

UNITS 3 - 6  
 PROPOSED ELEVATIONS

Drawing

Drawing Use Date Mar 2022  
 Information Scale 1:50 @ A1

Drawing number

10949/A1/12

Rev

A